

# Tarakee Farm® PRUD No. 1

A PRUD Subdivision

A part of Section 9, T6N, R2W, SLB&M, U.S. Survey

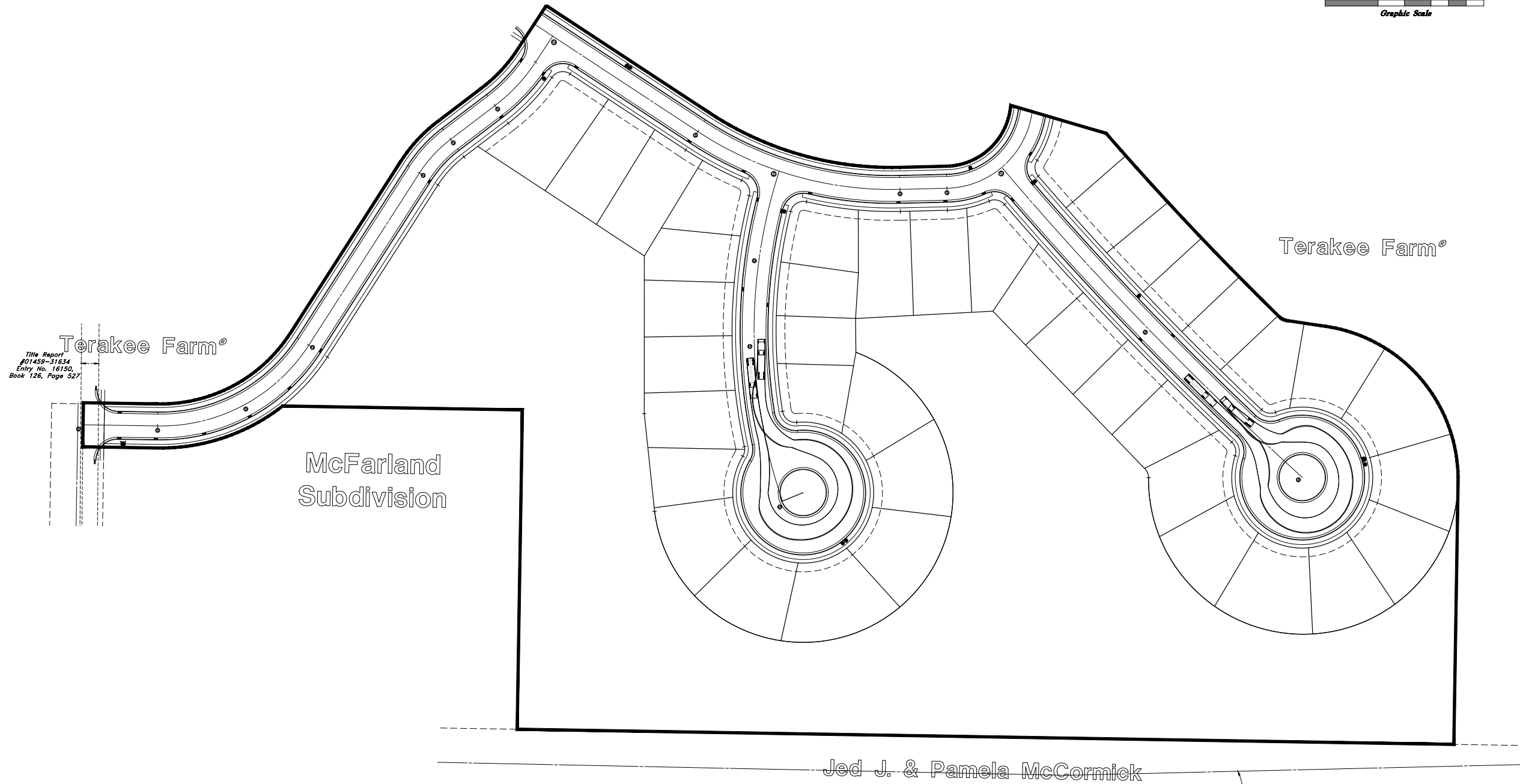
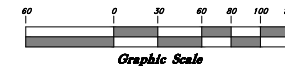
Weber County, Utah

January 2018

## Auto-Turn Around Plan



Scale 1" = 60'



Title Report #01459-31634  
Entry No. 16150,  
Book 126, Page 527

Terakee Farm®

McFarland  
Subdivision

Jed J. & Pamela McCormick

Title Report #01459-31634  
Entry #118232 in  
Book 255, Page 514

ENGINEER:  
Great Basin Engineering, Inc.  
c/o Andy Hubbard  
5746 South 1475 East Suite 200  
Ogden, Utah 84405  
(801) 394-4515

DEVELOPER:  
Terakee Investments, LLC  
c/o Brad Blanch  
1060 East 3400 North  
North Ogden, UT 84414  
(801) 668-8565

# PRELIMINARY PLAN

REV	DATE	DESCRIPTION

**GREAT BASIN ENGINEERING**

5746 SOUTH 1475 EAST OGDEN, UTAH 84403  
MAIN (801)394-4515 S.L.C (801)521-0222 FAX (801)392-7544  
WWW.GREATBASINENGINEERING.COM

**Auto Turn Around Plan**

**Terakee Farm - PRUD No. 1**

Approximately 1000 North 3600 West  
Weber County, Utah  
A part of Section 9, T6N, R2W, SLB&M, U.S. Survey

5 Jan, 2018

SHEET NO.  
**4**  
of 4