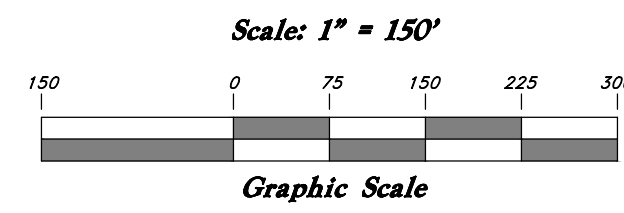
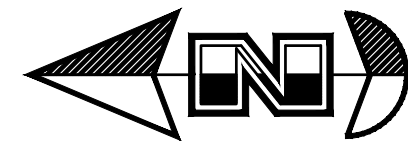


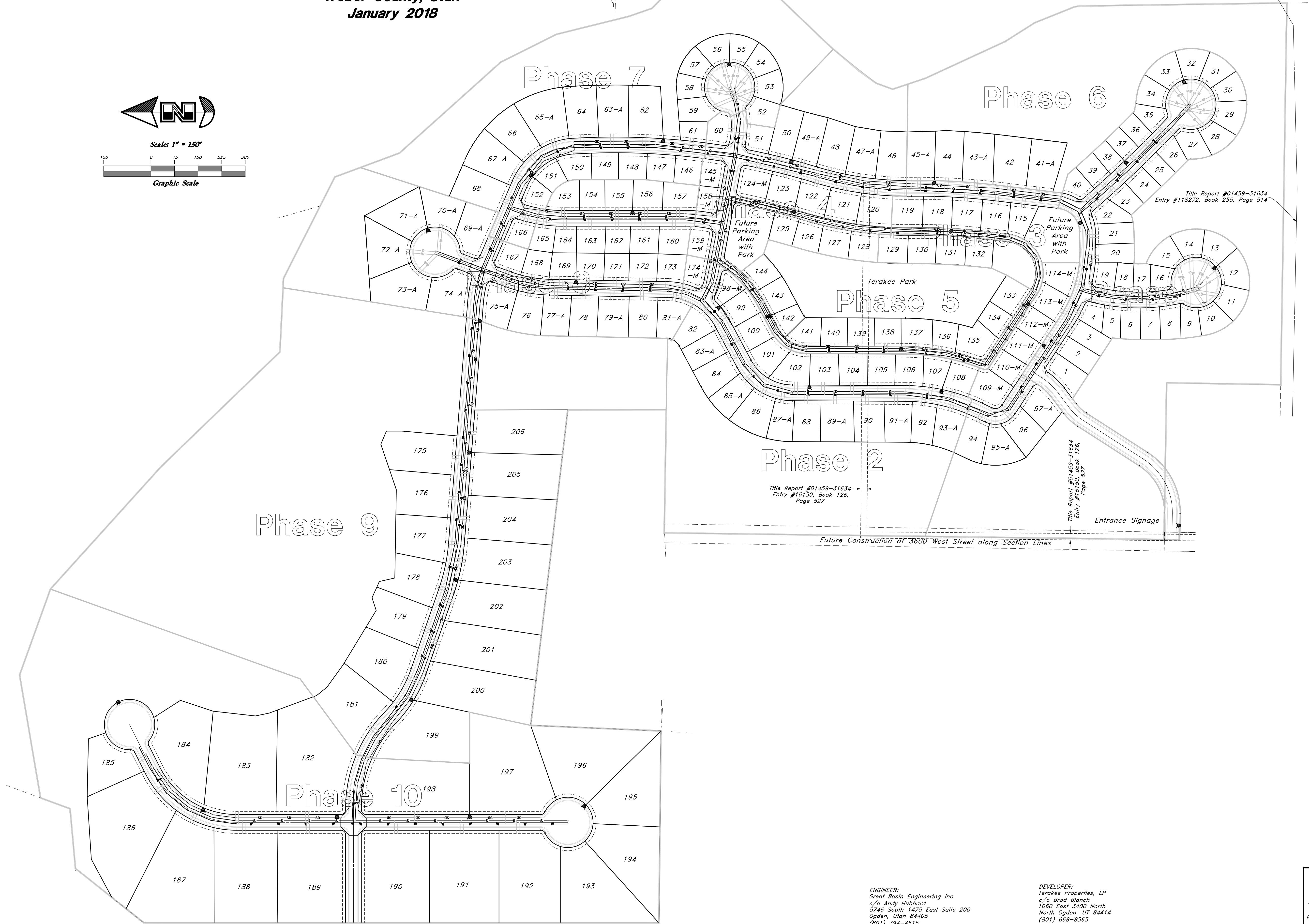
Preliminary Plan for Terakee Farm PRUD Subdivision

A part of Section 9, T6N, R2W, SLB&M, U.S. Survey
Weber County, Utah
January 2018



LEGEND

- Centerline
- UGT- Buried Telephone line
- OHT- Overhead Telephone line
- OHP- Overhead Power line
- UGP- Power line
- SS- Sanitary Sewer line
- S- Culinary Water line
- G- Gas line
- SD- Storm Drain line
- SW- Secondary Waterline
- LD- Land Drain line
- IW- Irrigation Waterline
- K-A- Fence Power Meter
- ⊙ Power Pole
- ⊙ Water Meter
- ⊙ Gas Meter
- ⊙ Power Meter
- ⊙ Telephone Box
- ⊙ Sewer Manhole
- ⊙ Drain Manhole
- ⊙ Water Manhole
- ⊙ Cleanout Box
- TA Top of Asphalt
- E4 Edge of Asphalt
- NG Natural Ground
- LG Lip of Gutter
- SP Service Pole
- LP Light Pole
- PP Power Pole
- TP Telephone Pole
- FH Fire Hydrant
- DIT Flowline of Ditch
- TOE Top of Slope
- TOP Top of Slope
- CO Cleanout
- FC Fence
- DMH Drain Manhole
- x99.00 Spot Elevation
- Contour Contour
- Asphalt
- Concrete
- Building
- ⊙ Catch Basin
- C.M.P. Corrugated Metal Pipe
- R.C.P. Reinforced Concrete Pipe
- CONC Edge of Concrete
- RWALL Retaining Wall
- SMH Sewer Manhole
- WV Water Valve
- CB Catch Basin
- OVB Diversion Box
- TC Top of Curb
- SW Sidewalk
- GAS Gas line Marker
- GUY Guy Wire
- BLDG Building Corner
- ⊙ Fire Hydrant
- NG Natural Ground
- ⊙ Water Valve
- ⊙ Light Pole
- ⊙ Power Pole w/guy
- Deciduous Tree
- Coniferous Tree
- ARP Area Reference Plat
- ⊙ Building Columns
- LS Landscaping



GREAT BASIN ENGINEERING
5746 SOUTH 1475 EAST OGDEN, UTAH 84403
MAIN (801) 394-4515 S.L.C. (801) 521-0222 FAX (801) 392-7544
WWW.GREATBASINENGINEERING.COM

OVERALL UTILITY PLAN

ENGINEER:
Great Basin Engineering Inc
c/o Andy Hubbard
5746 South 1475 East Suite 200
Ogden, Utah 84405
(801) 394-4515

DEVELOPER:
Terakee Properties, LP
c/o Brad Blanch
1060 East 3400 North
North Ogden, UT 84414
(801) 668-8565

16N704 - Terakee Farm - PRUD No. 1

Sheet 2 of 6

WEBER COUNTY RECORDER

ENTRY NO. _____ FEE PAID _____

RECORDED _____ FILED FOR RECORD AND _____

IN BOOK _____ OF OFFICIAL _____

RECORDS, PAGE _____ RECORDED _____

FOR _____

WEBER COUNTY RECORDER

BY: _____ DEPUTY _____

Preliminary Plan for Tarakee Farm® - No. 1

A PRUD Subdivision
A part of Section 9, T6N, R2W, SLB&M, U.S. Survey
Weber County, Utah
January 2018

Northeast Corner of Section 9,
T6N, R2W, SLB&M, U.S. Survey

(2640.03' W.C.S.)

Northeast Corner of Section 9,
T6N, R2W, SLB&M, U.S. Survey

(N 2°17'28" W 2574.61' W.C.S.)

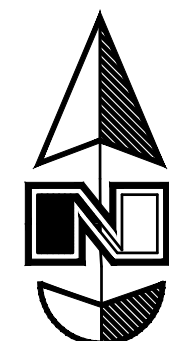
(2632.75' W.C.S.)

(N 0°45'17" E W.C.S.)

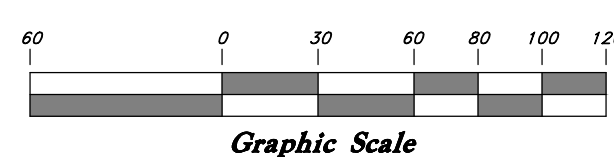
(N 0°51'29" E W.C.S.)

(S 89°15'28" E W.C.S.)

Center of Section 9,
T6N, R2W, SLB&M, U.S. Survey



Scale: 1" = 60'



Graphic Scale

Terakee Farm®

Terakee Farm®

McFarland
Subdivision

A
7.23 Acres

Jed J. & Pamela McCormick

(N/R) Non Radial to Right of Way Line
(Rad) Radial to Right of Way Line

ENGINEER: Engineering Inc
Great Basin
c/o Andy Hubbard
5746 South 1475 East Suite 200
Ogden, Utah 84405
(801) 394-4515

DEVELOPER:
Tarakee Investments, LLC
c/o Brad Blanch
1060 East 3400 North
North Ogden, UT 84414
(801) 668-8565

Sheet 3 of 6

WEBER COUNTY RECORDER

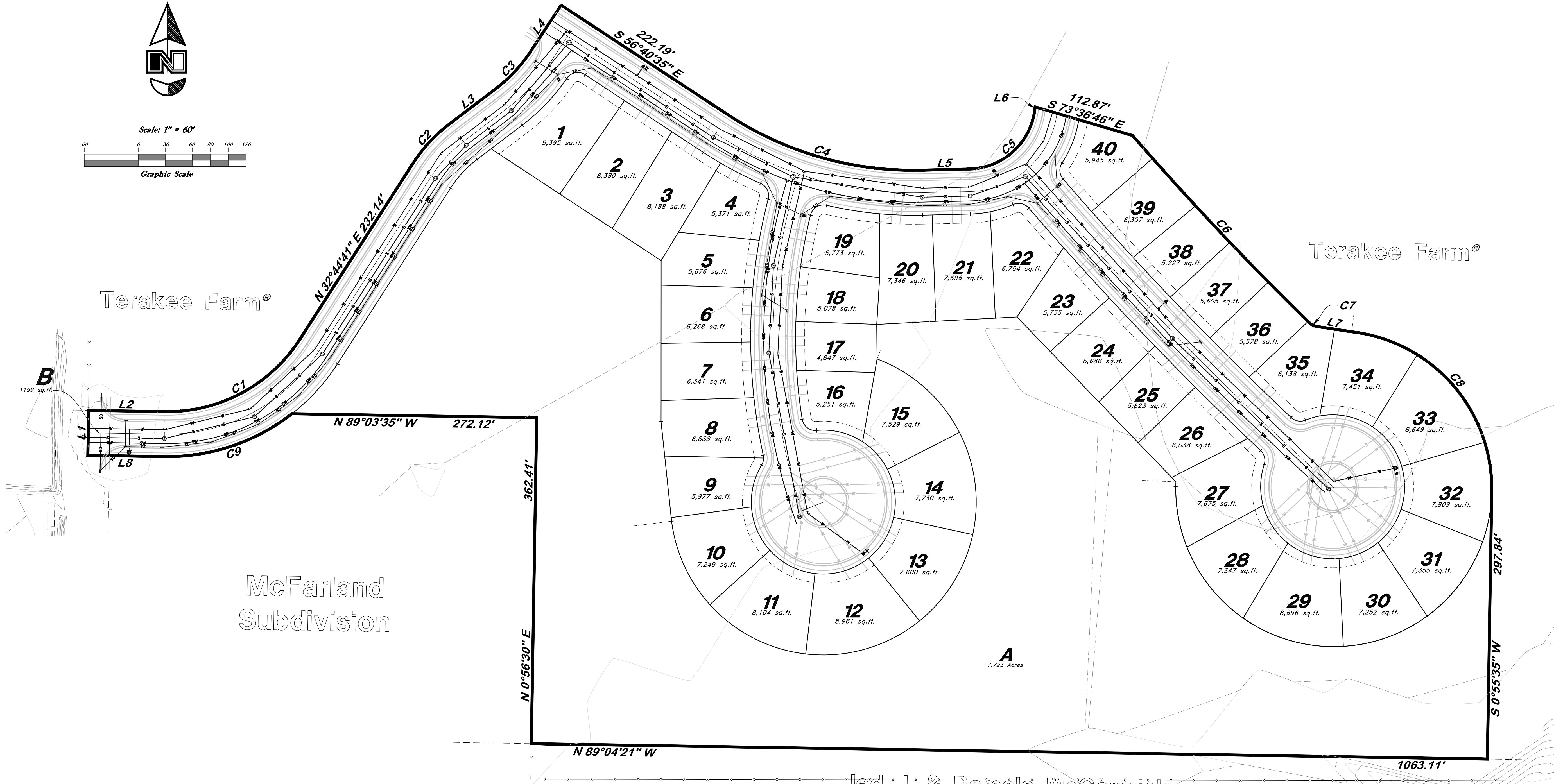
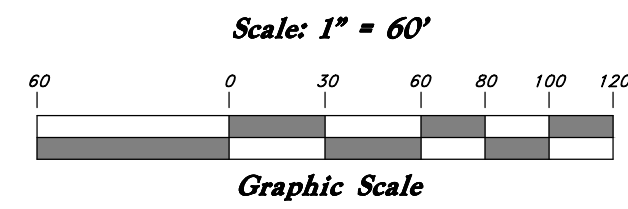
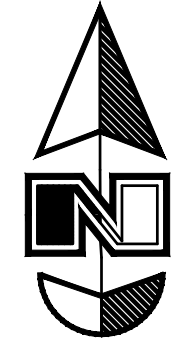
ENTRY NO. _____ FEE PAID _____
RECORDED _____ FILED FOR RECORD AND
IN BOOK _____ OF OFFICIAL
RECORDS, PAGE _____ RECORDED
FOR _____

WEBER COUNTY RECORDER

BY: _____ DEPUTY

Preliminary Plan for
Tarakee Farm® - No. 1

A PRUD Subdivision
 A part of Section 9, T6N, R2W, SLB&M, U.S. Survey
 Weber County, Utah
 January 2018

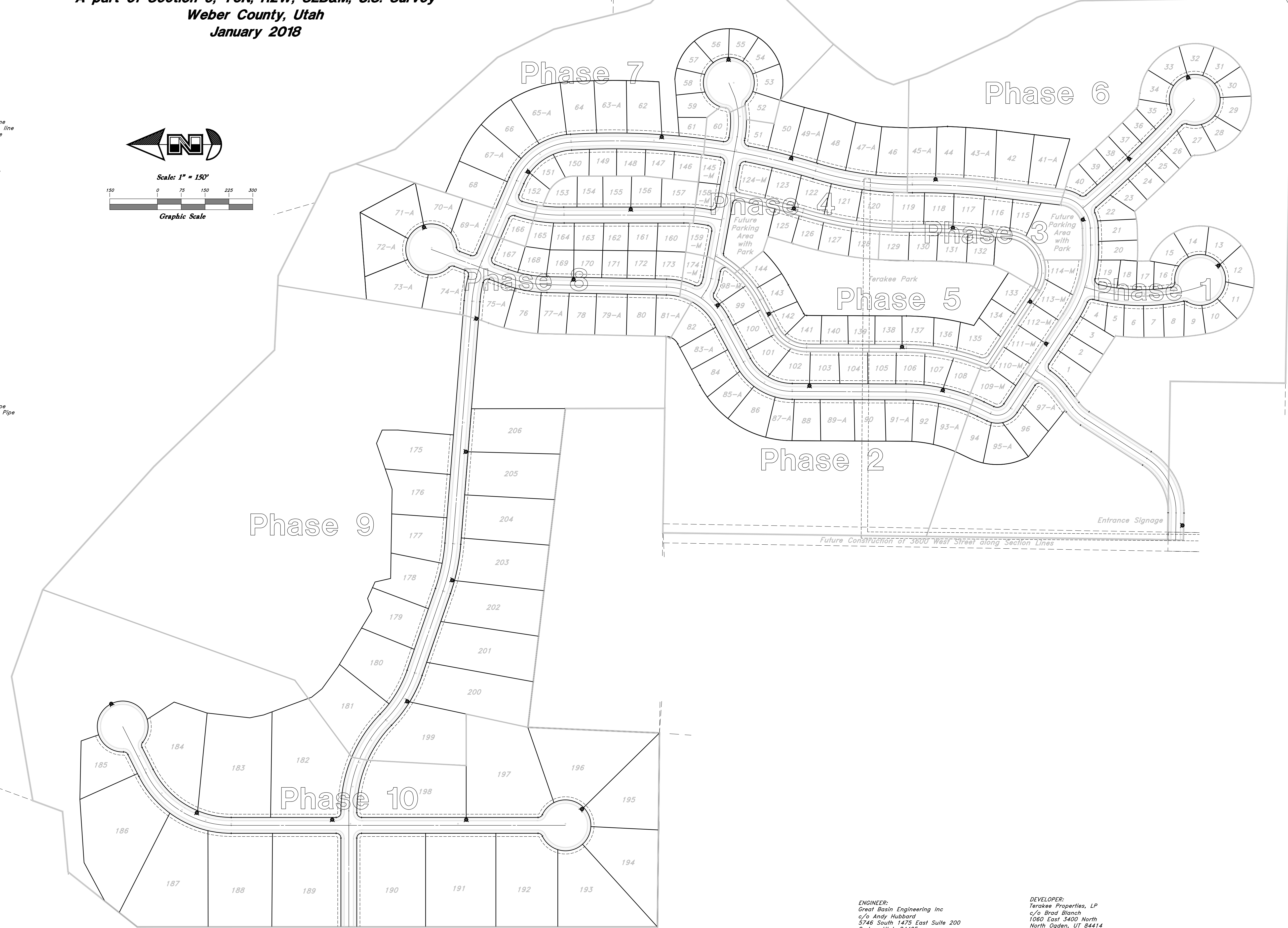
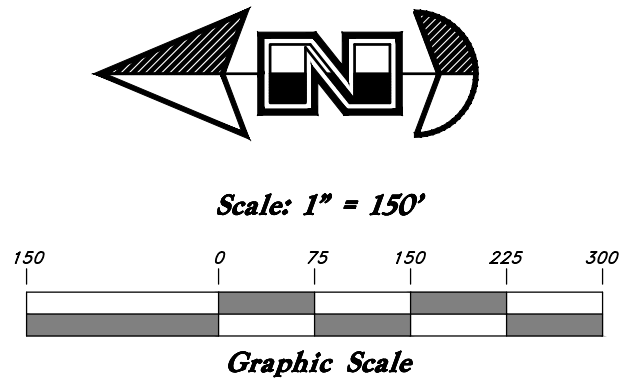


Preliminary Plan for Terakee Farm PRUD Subdivision

A part of Section 9, T6N, R2W, SLB&M, U.S. Survey
Weber County, Utah
January 2018

LEGEND

- Centerline
- UGT- Buried Telephone line
- OHT- Overhead Telephone line
- OHP- Overhead Power line
- UGP- Power line
- S- Sanitary Sewer line
- W- Culinary Water line
- G- Gas line
- SD- Storm Drain line
- SW- Secondary Waterline
- LD- Land Drain line
- IW- Irrigation Waterline
- K-K- Fence
- Power Meter
- Post
- Water Meter
- Gas Meter
- Power Meter
- Telephone Box
- Sewer Manhole
- Drain Manhole
- Water Manhole
- Cleanout Box
- TA Top of Asphalt
- EA Edge of Asphalt
- NG Natural Ground
- LG Lip of Gutter
- SP Service Pole
- LP Light Pole
- PP Power Pole
- TP Telephone Pole
- FH Fire Hydrant
- DIT Flowline of Ditch
- TOE Toe of Slope
- TOP Top of Slope
- CO Cleanout
- FC Fence
- DMH Drain Manhole
- Spot Elevation
- Contour
- Asphalt
- Concrete
- Building
- Catch Basin
- C.M.P. Corrugated Metal Pipe
- R.C.P. Reinforced Concrete Pipe
- CONC Edge of Concrete
- RWALL Retaining Wall
- SMH Sewer Manhole
- WV Water Valve
- CB Catch Basin
- DB Diversion Box
- TC Top of Curb
- SW Sidewalk
- GAS Gas line Marker
- GUY Guy Wire
- BLDG Building Corner
- LI Fire Hydrant
- NG Natural Ground
- WV Water Valve
- LP Light Pole
- Power Pole w/guy
- Deciduous Tree
- Coniferous Tree
- ARP Area Reference Plat
- COL Building Columns
- LS Landscaping



ENGINEER:
Great Basin Engineering Inc
c/o Andy Hubbard
5746 South 1475 East Suite 200
Ogden, Utah 84405
(801) 394-4515

DEVELOPER:
Terakee Properties, LP
c/o Brad Blanch
1080 East 3400 North
North Ogden, UT 84414
(801) 668-8565

Sheet 5 of 6

WEBER COUNTY RECORDER

ENTRY NO. _____ FEE PAID _____

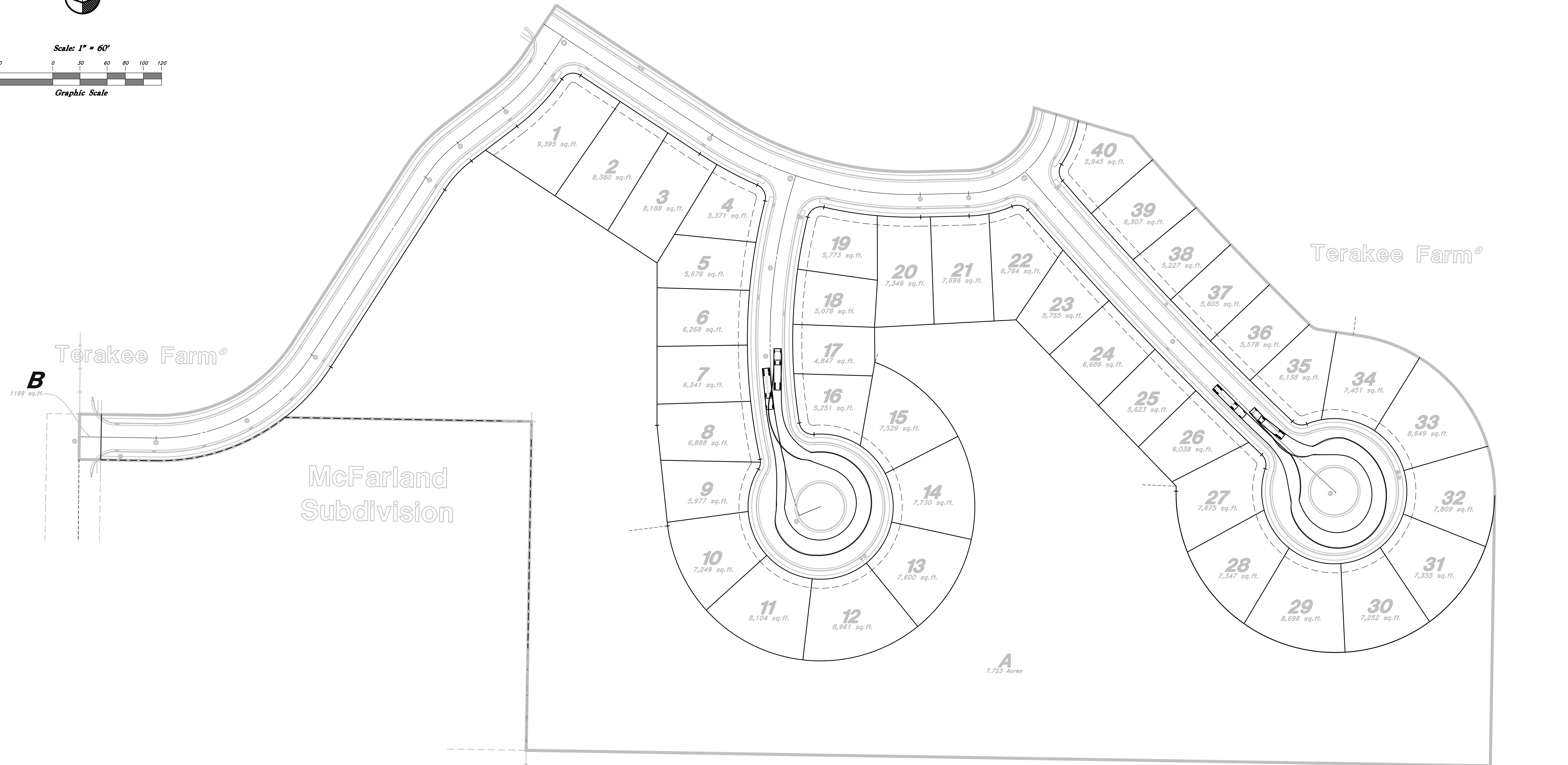
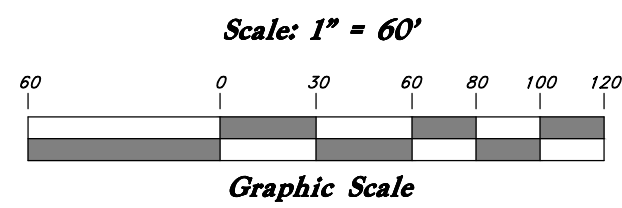
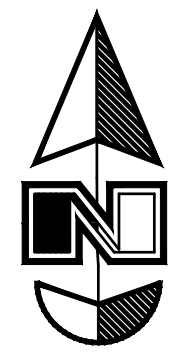
RECORDED IN BOOK _____ OF OFFICIAL RECORDS, PAGE _____, AT _____, RECORDED FOR _____

WEBER COUNTY RECORDER

BY: _____ DEPUTY

Preliminary Plan for
Tarakee Farm® - No. 1

A PRUD Subdivision
 A part of Section 9, T6N, R2W, SLB&M, U.S. Survey
 Weber County, Utah
 January 2018



Jed J. & Pamela McCormick

PARCEL 1 FIRE TRUCK TURNING TEMPLATE

Sheet 6 of 6

WEBER COUNTY RECORDER

ENTRY NO. _____ FEE PAID _____

RECORDED _____ FILED FOR RECORD AND _____

RECORDED _____ AT _____

IN BOOK _____ OF OFFICIAL

RECORDS, PAGE _____ RECORDED

FOR _____

WEBER COUNTY RECORDER

BY: _____ DEPUTY _____