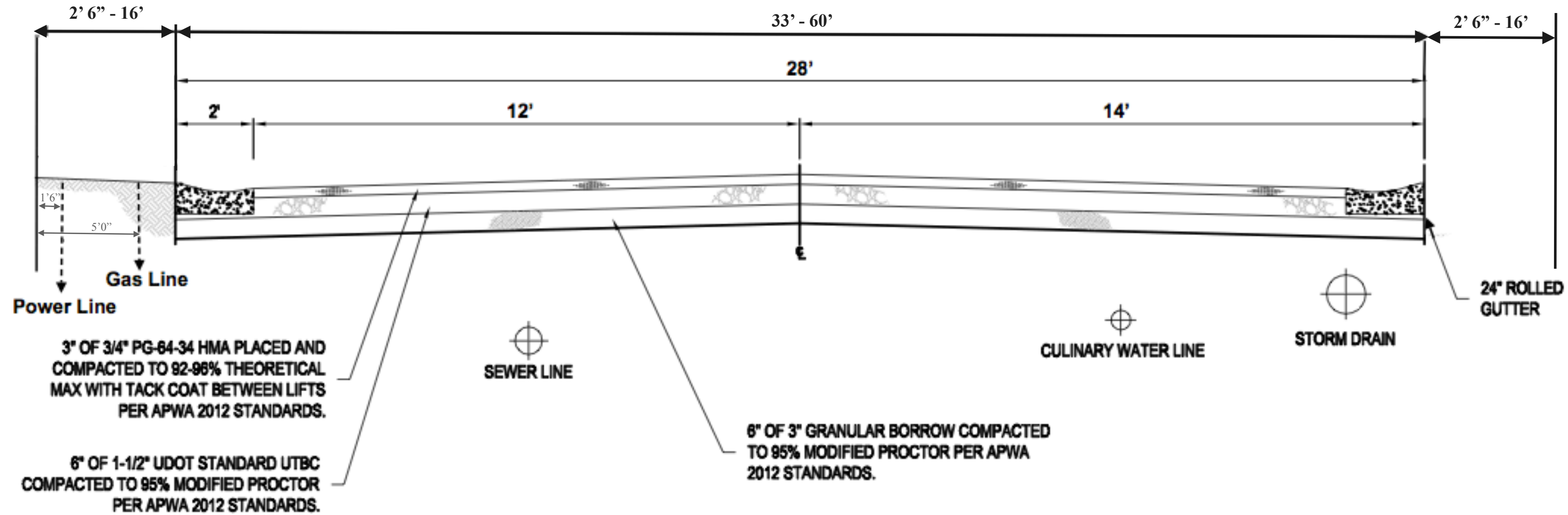
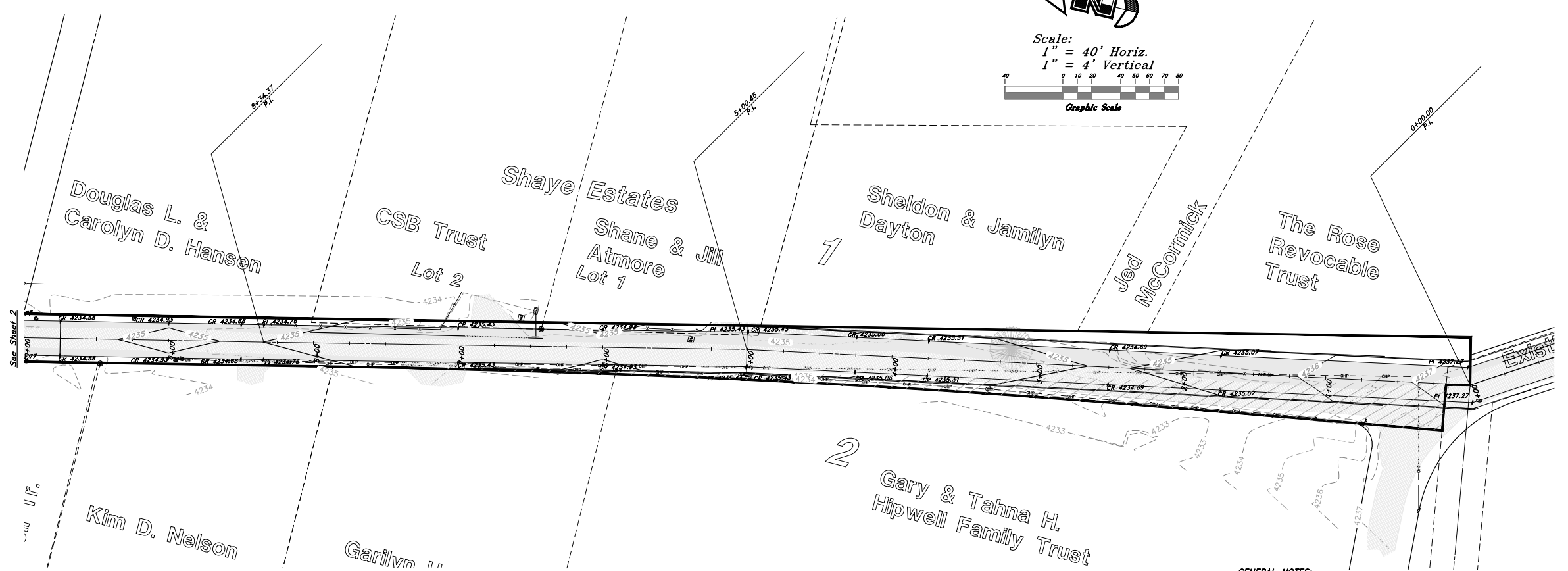
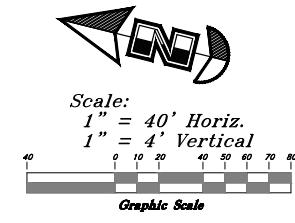


# 33' - 60' ROW



**Sidewalk / Walking Path Installed When Full ROW Dedicated**

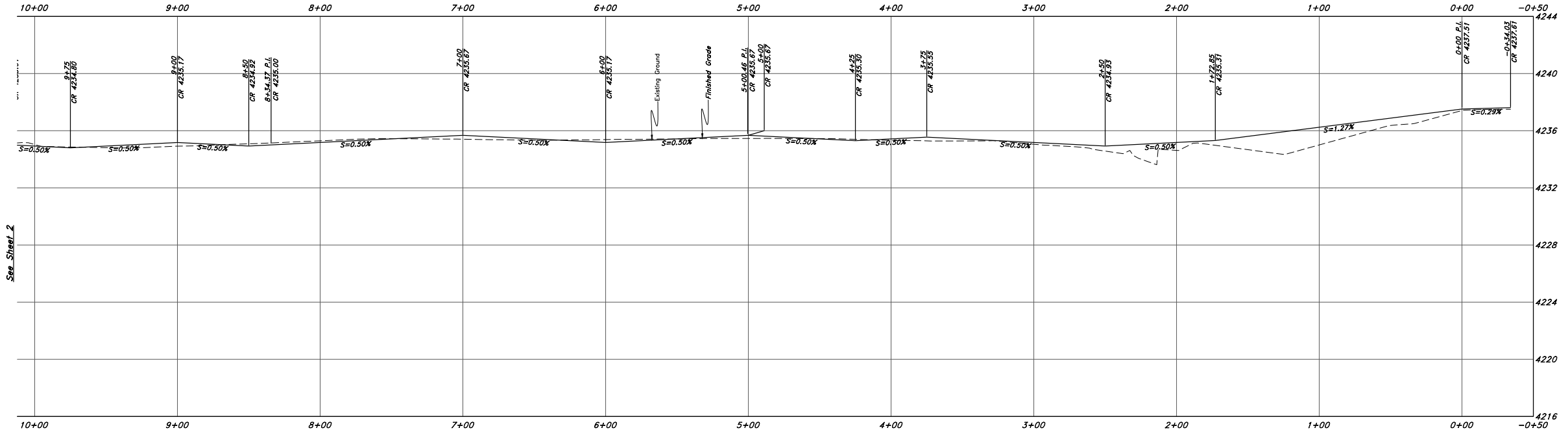


**Legend**

(Note: All items may not appear on drawing)

- Water Meter
- San. Sewer Manhole
- Water Manhole
- Storm Drain Manhole
- Cleanout
- Electrical Manhole
- Catch Basins
- Exist. Fire Hydrant
- Fire Hydrant
- Exist. Water Valve
- Water Valve
- Sanitary Sewer
- Culinary Water
- Gas Line
- Irrigation Line
- Storm Drain
- Telephone Line
- Secondary Waterline
- Power Line
- Fire Line
- Land Drain
- Power pole w/guy
- Light Pole
- Fence
- Flowline of ditch
- Overhead Power line
- Corrugated Metal Pipe
- Concrete Pipe
- Reinforced Concrete Pipe
- Ductile Iron
- PVC
- Top of Asphalt
- Edge of Asphalt
- Centerline
- Flowline
- Finish Floor
- Top of Curb
- Top of Wall
- Top of Walk
- Top of Concrete
- Natural Ground
- Finish Grade
- Match Existing
- Fire Department Connection
- Finish Contour
- Exist. Contour
- Finish Grade
- Exist. Grade
- Ridge Line
- Existing Asphalt
- New Asphalt
- Heavy Duty Asphalt
- Existing Concrete
- New Concrete
- Spill Curb & Gutter
- Demo Tree

**3600 West Street**



- GENERAL NOTES:**
- All construction must meet or exceed Weber County Standards and Specifications.
  - Verify the Depth & Location of all utility crossings & connections prior to their Construction.
  - Contractor is responsible for Looping Culinary and Secondary Waterlines to Maintain depth of cover and separation between gravity fed utility lines.
  - Saw Cut existing Asphalt to expose a smooth clean edge and a minimum 1 foot of undisturbed road base from under existing asphalt.
  - Field verify size & type of exist. utilities prior to construction of laterals.
  - Import fill required for trenches within the Right of Way unless on site material is approved by County Engineer with proper testing.

**CAUTION NOTICE TO CONTRACTOR**  
 The contractor is specifically cautioned that the location and/or elevation of existing utilities as shown on these plans are based on records of the various utility companies and, where possible, measurements taken in the field. The information is not to be relied on as being exact or complete. The contractor must call the appropriate utility company at least 48 hours before any excavation to request exact field location of utilities. It shall be the responsibility of the contractor to relocate all existing utilities which conflict with the proposed improvements shown on the plans.

**PRIVATE ENGINEER'S NOTICE TO CONTRACTORS**  
 The Contractor agrees that he shall assume sole and complete responsibility for job site conditions during the course of construction of this project, including safety of all persons and property; that this requirement shall apply continuously and not be limited to normal working hours; and that the contractor shall defend, indemnify, and hold the owner and the engineer harmless from any and all liability, real or alleged, in connection with the performance of work on this project, excepting for liability arising from the sole negligence of the owner or the engineer.

TENTATIVE FINAL



**GREAT BASIN ENGINEERING**  
 5746 SOUTH 1475 EAST OGDEN, UTAH 84403  
 MAIN (801) 394-4515 S.L.C (801) 521-0222 FAX (801) 392-7544  
 WWW.GREATBASINENGINEERING.COM

**Plan & Profile**  
**3600 West Road Dedication**  
 3600 West Street  
 Weber County, Utah  
 A part of Section 16, T6N, R2W, S16&M, U.S. Survey

21 Mar, 2017

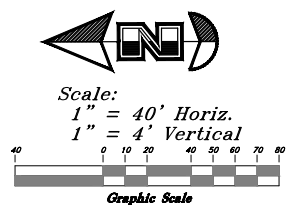
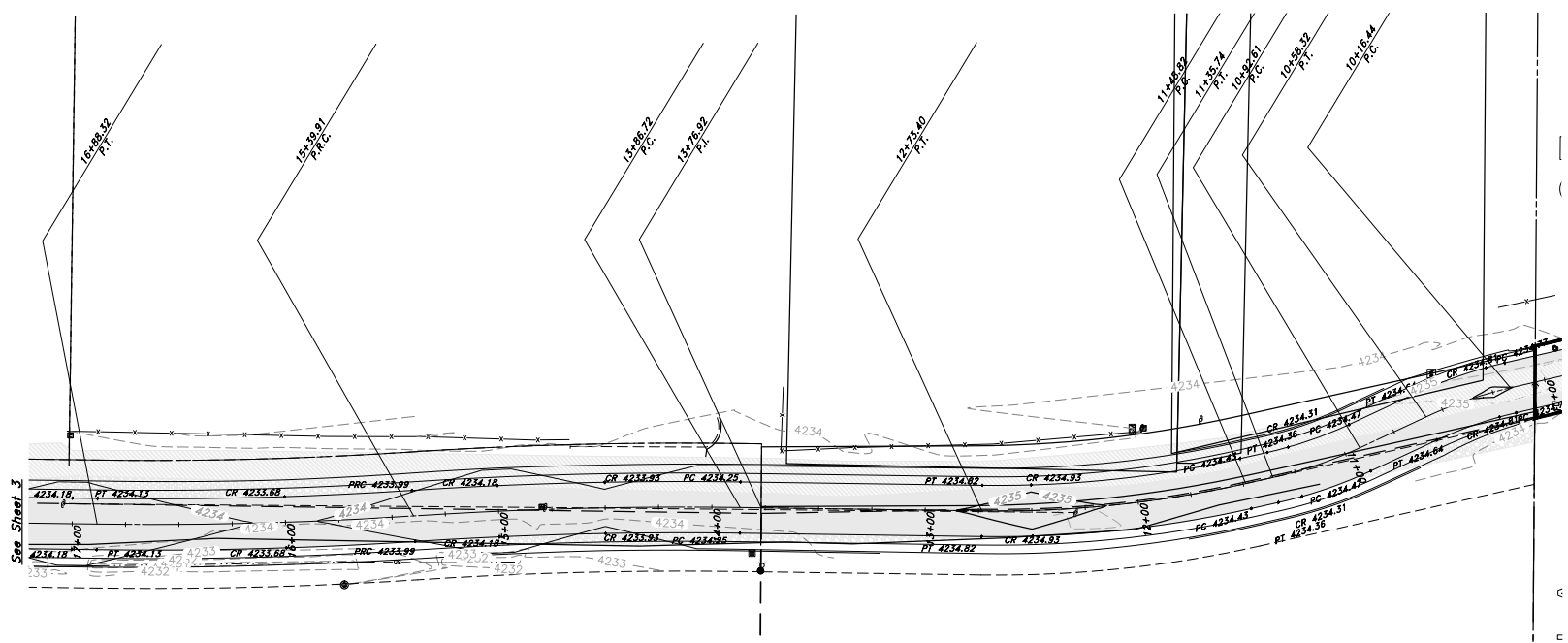
SHEET NO. **1**

16N704

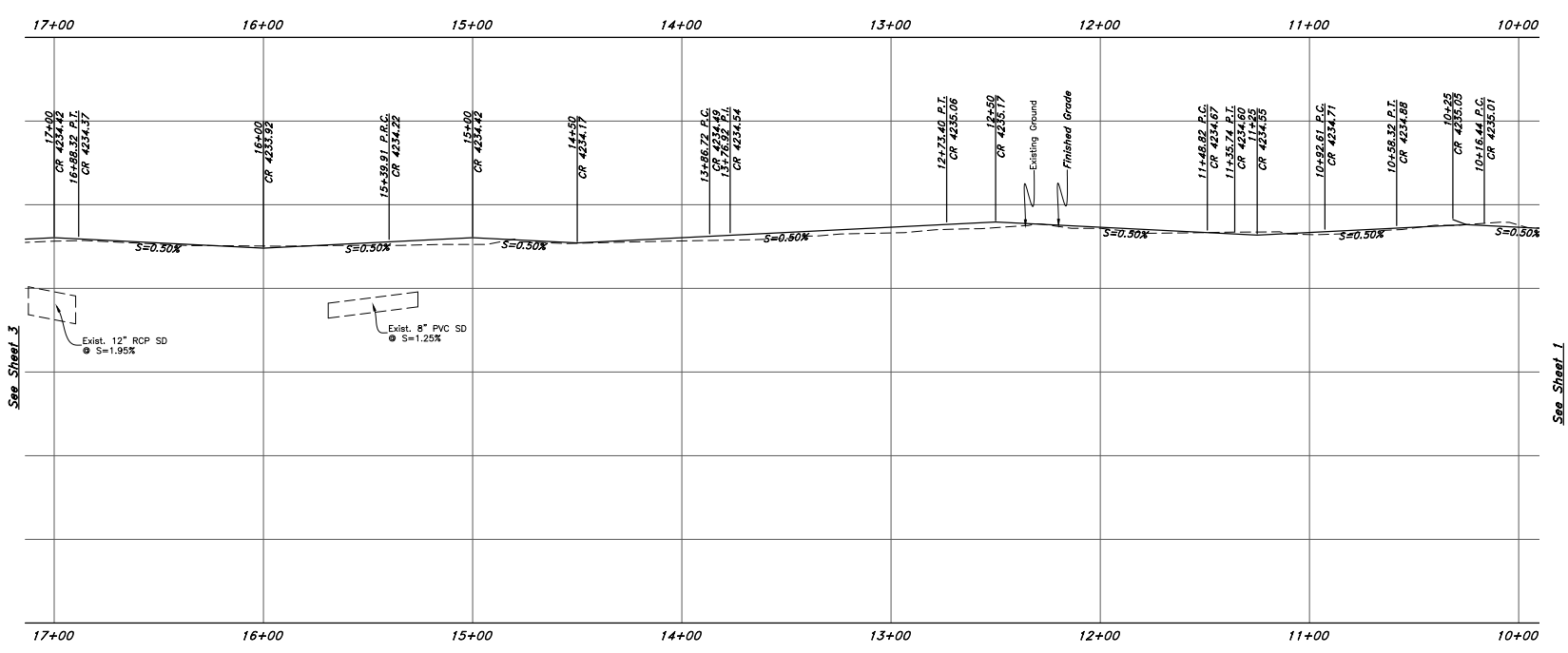
# Legend

(Note: All items may not appear on drawing)

- Water Meter
- San. Sewer Manhole
- Water Manhole
- Storm Drain Manhole
- Cleanout
- Electrical Manhole
- Catch Basins
- Exist. Fire Hydrant
- Fire Hydrant
- Exist. Water Valve
- Water Valve
- Sanitary Sewer
- Culinary Water
- Gas Line
- Irrigation Line
- Storm Drain
- Telephone Line
- Secondary Waterline
- Power Line
- Fire Line
- Land Drain
- Power pole
- Power pole w/guy
- Light Pole
- Fence
- Flowline of ditch
- Overhead Power line
- Corrugated Metal Pipe
- Concrete Pipe
- Reinforced Concrete Pipe
- Ductile Iron
- Polyvinyl Chloride
- Top of Asphalt
- Edge of Asphalt
- Centerline
- Flowline
- Finish Floor
- Top of Curb
- Top of Wall
- Top of Walk
- Top of Concrete
- Natural Ground
- Finish Grade
- ME
- Match Existing
- Fire Department Connection
- Finish Contour
- Exist. Contour
- Finish Grade
- Exist. Grade
- Ridge Line
- Existing Asphalt
- New Asphalt
- Heavy Duty Asphalt
- Existing Concrete
- New Concrete
- Spill Curb & Gutter
- Demo Tree



## 3600 West Street



- GENERAL NOTES:**
1. All construction must meet or exceed Weber County Standards and Specifications.
  2. Verify the Depth & Location of all utility crossings & connections prior to their construction.
  3. Contractor is responsible for Looping Culinary and Secondary Waterlines to Maintain depth of cover and separation between gravity fed utility lines.
  4. Saw Cut existing Asphalt to expose a smooth clean edge and a minimum 1 foot of undisturbed road base from under existing asphalt.
  5. Field verify size & type of exist. utilities prior to construction of laterals.
  6. Import fill required for trenches within the Right of Way unless on site material is approved by County Engineer with proper testing.

**CAUTION NOTICE TO CONTRACTOR**  
 The contractor is specifically cautioned that the location and/or elevation of existing utilities as shown on these plans are based on records of the various utility companies and, where possible, measurements taken in the field. The information is not to be relied on as being exact or complete. The contractor must call the appropriate utility company at least 48 hours before any excavation to request exact field location of utilities. It shall be the responsibility of the contractor to relocate all existing utilities which conflict with the propose improvements shown on the plans.

**PRIVATE ENGINEER'S NOTICE TO CONTRACTORS**  
 The Contractor agrees that he shall assume sole and complete responsibility for job site conditions during the course of construction of this project, including safety of all persons and property; that this requirement shall apply continuously and not be limited to normal working hours; and that the contractor shall defend, indemnify, and hold the owner and the engineer harmless from any and all liability, real or alleged, in connection with the performance of work on this project, excepting for liability arising from the sole negligence of the owner or the engineer.

TENTATIVE FINAL



REV	DATE	DESCRIPTION

**GREAT BASIN ENGINEERING**

5746 SOUTH 1475 EAST OGDEN, UTAH 84403  
 MAIN (801) 994-4515 S.L.C (801) 521-0222 FAX (801) 992-7544  
 WWW.GREATBASINENGINEERING.COM

**Plan & Profile**  
**3600 West Road Dedication**  
 3600 West Street  
 Weber County, Utah  
 A part of Section 16, T6N, R2W, S18&M, U.S. Survey

21 Mar, 2017

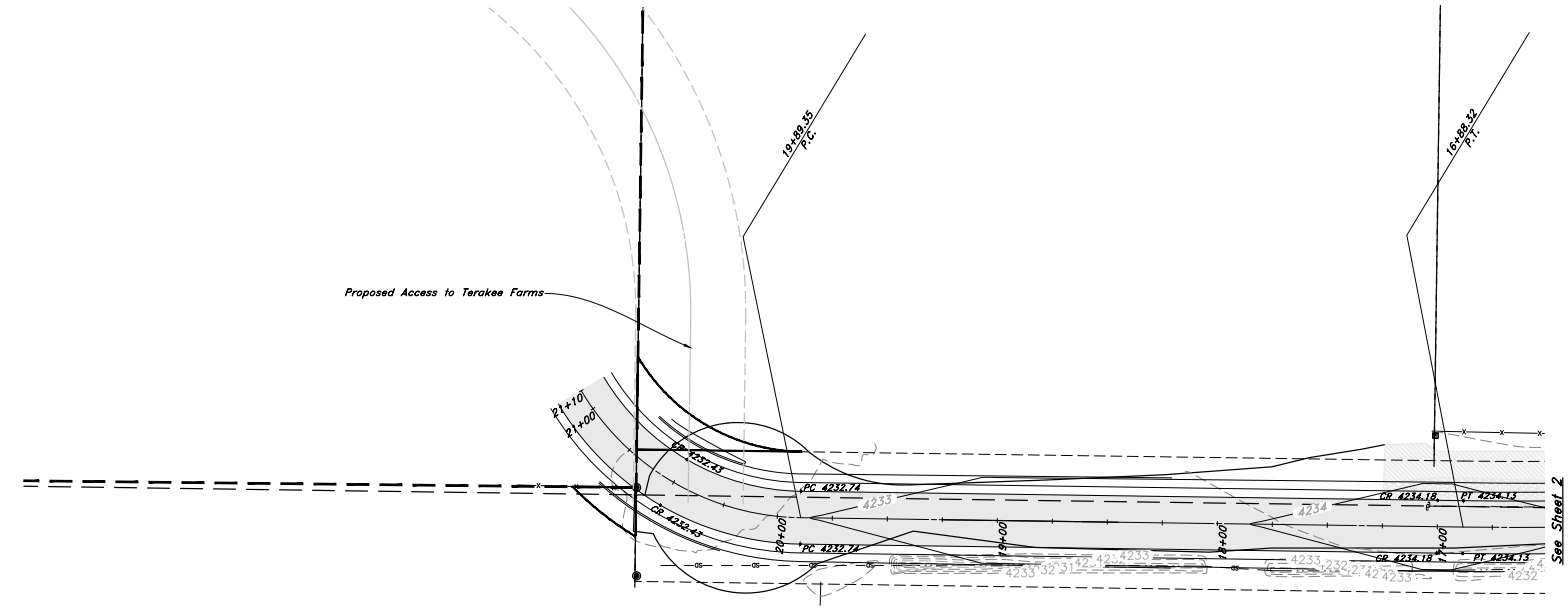
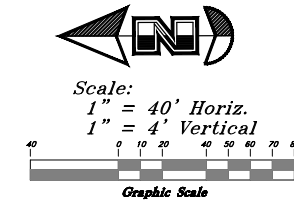
SHEET NO.  
2

16N704

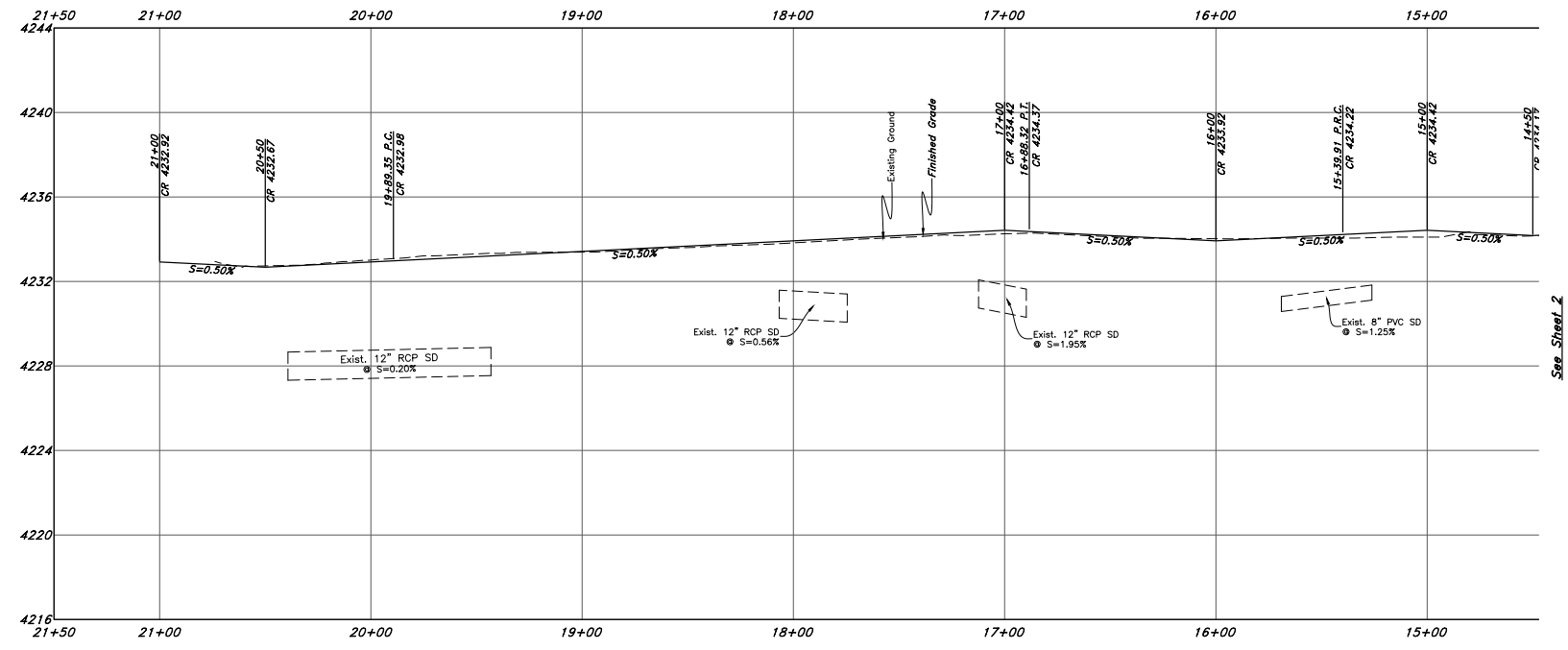
# Legend

(Note: All items may not appear on drawing)

- Water Meter
- San. Sewer Manhole
- Water Manhole
- Storm Drain Manhole
- Cleanout
- Electrical Manhole
- Catch Basins
- Exist. Fire Hydrant
- Fire Hydrant
- Exist. Water Valve
- Water Valve
- Sanitary Sewer
- Culinary Water
- Gas Line
- Irrigation Line
- Storm Drain
- Telephone Line
- Secondary Waterline
- Power Line
- Fire Line
- Land Drain
- Power pole
- Power pole w/guy
- Light Pole
- Fence
- Flowline of ditch
- Overhead Power line
- Corrugated Metal Pipe
- Concrete Pipe
- Reinforced Concrete Pipe
- Ductile Iron
- Polyvinyl Chloride
- Top of Asphalt
- Edge of Asphalt
- Centerline
- Flowline
- Finish Floor
- Top of Curb
- Top of Wall
- Top of Walk
- Top of Concrete
- Natural Ground
- Finish Grade
- Match Existing
- Fire Department Connection
- Finish Contour
- Exist. Contour
- Finish Grade
- Exist. Grade
- Ridge Line
- Existing Asphalt
- New Asphalt
- Heavy Duty Asphalt
- Existing Concrete
- New Concrete
- Spill Curb & Gutter
- Demo Tree



## 3600 West Street



- GENERAL NOTES:**
1. All construction must meet or exceed Weber County Standards and Specifications.
  2. Verify the Depth & Location of all utility crossings & connections prior to their Construction.
  3. Contractor is responsible for Looping Culinary and Secondary Waterlines to Maintain depth of cover and separation between gravity fed utility lines.
  4. Saw Cut existing Asphalt to expose a smooth clean edge and a minimum 1 foot of undisturbed road base from under existing asphalt.
  5. Field verify size & type of exist. utilities prior to construction of laterals.
  6. Import fill required for trenches within the Right of Way unless on site material is approved by County Engineer with proper testing.

**CAUTION NOTICE TO CONTRACTOR**  
 The contractor is specifically cautioned that the location and/or elevation of existing utilities as shown on these plans are based on records of the various utility companies and, where possible, measurements taken in the field. The information is not to be relied on as being exact or complete. The contractor must call the appropriate utility company at least 48 hours before any excavation to request exact field location of utilities. It shall be the responsibility of the contractor to relocate all existing utilities which conflict with the propose improvements shown on the plans.

**PRIVATE ENGINEER'S NOTICE TO CONTRACTORS**  
 The Contractor agrees that he shall assume sole and complete responsibility for job site conditions during the course of construction of this project, including safety of all persons and property; that this requirement shall apply continuously and not be limited to normal working hours; and that the contractor shall defend, indemnify, and hold the owner and the engineer harmless from any and all liability, real or alleged, in connection with the performance of work on this project, excepting for liability arising from the sole negligence of the owner or the engineer.

TENTATIVE FINAL



REV	DATE	DESCRIPTION

**GREAT BASIN ENGINEERING**

5746 SOUTH 1475 EAST OGDEN, UTAH 84403  
 MAIN (801)394-4515 S.L.C (801)521-0222 FAX (801)392-7544  
 WWW.GREATBASINENGINEERING.COM

**Plan & Profile**  
**3600 West Road Dedication**  
 3600 West Street  
 Weber County, Utah  
 A part of Section 16, T6N, R2W, S18&M, U.S. Survey

**21 Mar, 2017**

SHEET NO.  
3

16N704