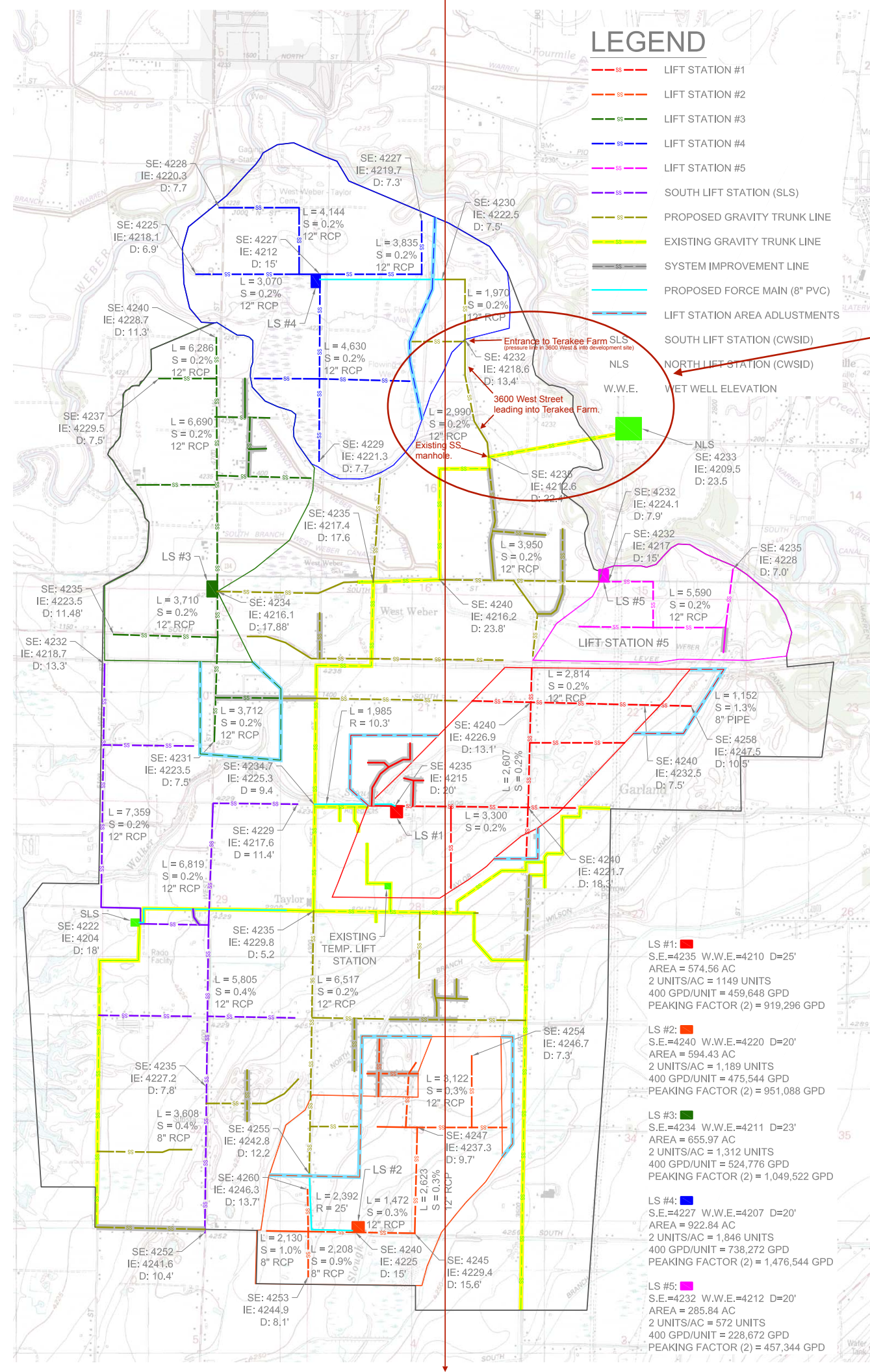


Terakee Farm Sanitary Sewer Master Plan (updated January 2018)

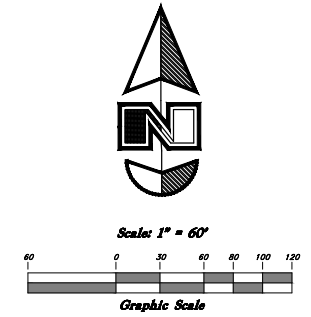


Pressure sanitary sewer line to be pulled down 3600 West to existing manhole. (notes on plan highlighted in red)

Temporary Lift Station shown on page 2 of this file.

PRELIMINARY DESCRIPTION

A part of the Southeast Quarter of Section 9, Township 6 North, Range 2 West, Salt Lake Base and Meridian, U.S. Survey, Weber County, Utah:
 Beginning at a point on the Easterly Line of the Levar J. & Elise Higwell Trustee's Property, said point being 919.59 feet South 89°26'19" East along the Section Line and 999.47 feet North 0°33'41" East along the Centerline of 3600 West Street from the South Quarter Corner of said Section 9; and running thence North 0°56'25" East 50.00 feet along said Easterly Line to the Southerly Line of the Terakee Farm property; thence along said Southerly, Easterly and Westerly Lines the following eighteen (18) courses: (1) South 89°03'35" East 84.69 feet to a point of curvature, (2) Northeasterly along the arc of a 173.90 foot Radius curve to the left a distance of 177.70 feet (Central Angle equals 58°32'52" and Long Chord bears North 61°45'37" East 170.07 feet), (3) North 32°44'41" East 232.14 feet to a point of curvature, (4) Northeasterly along the arc of a 175.00 foot Radius curve to the right a distance of 61.14 feet (Central Angle equals 20°01'00" and Long Chord bears North 42°45'11" East 60.83 feet), (5) North 52°45'41" East 63.20 feet to a point of curvature, (6) Northeasterly along the arc of a 175.00 foot Radius curve to the left a distance of 54.24 feet (Central Angle equals 17°45'32" and Long Chord bears North 43°52'55" East 54.02 feet), (7) North 33°19'25" East 65.44 feet, (8) South 56°40'35" East 222.19 feet to a point of curvature, (9) Southeasterly along the arc of a 375.00 foot Radius curve to the left a distance of 227.11 feet (Central Angle equals 34°42'00" and Long Chord bears South 74°01'35" East 223.66 feet), (10) North 88°37'25" East 53.32 feet to a point of curvature, (11) Northeasterly along the arc of a 75.00 foot Radius curve to the left a distance of 107.01 feet (Central Angle equals 81°45'10" and Long Chord bears North 47°44'49" East 98.16 feet), (12) North 6°52'14" East 3.15 feet, (13) South 73°36'46" East 112.87 feet to a point of a non-tangent curve, (14) Southeasterly along the arc of a 3561.68 foot Radius curve to the left a distance of 286.42 feet (Central Angle equals 4°36'27" and Long Chord bears South 43°21'07" East 286.34 feet), (15) Southeasterly along the arc of a 15.00 foot Radius curve to the left a distance of 9.34 feet (Central Angle equals 35°40'18" and Long Chord bears South 63°29'29" East 9.19 feet) to a point of tangency, (16) South 81°19'38" East 39.36 feet to a point of curvature, (17) Southeasterly along the arc of a 175.65 foot Radius curve to the right a distance of 258.77 feet (Central Angle equals 84°24'30" and Long Chord bears South 41°16'41" East 236.00 feet) to a point of tangency, and (18) South 0°55'35" West 297.84 feet to the Northerly Line of the Jed J. & Pamela McCormick Property; thence along said Northerly Line North 89°04'21" West 1063.11 feet to the Westerly Line of the McFarland Subdivision, Weber County, Utah; thence along said Westerly and Northerly Lines the following four (4) courses: (1) North 0°56'30" East 362.41 feet, (2) North 89°03'35" West 272.12 feet to a point of a non-tangent curve, (3) Southwesterly along the arc of a 225.00 foot Radius curve to the right a distance of 152.93 feet (Central Angle equals 38°56'33" and Long Chord bears South 71°28'08" West 150.00 feet) to a point of tangency, and (4) North 89°03'35" West 84.69 feet to the Centerline of said 3600 West Street and the Point of Beginning.
 Contains 752,399 Sq. Ft. or 17.273 Acres



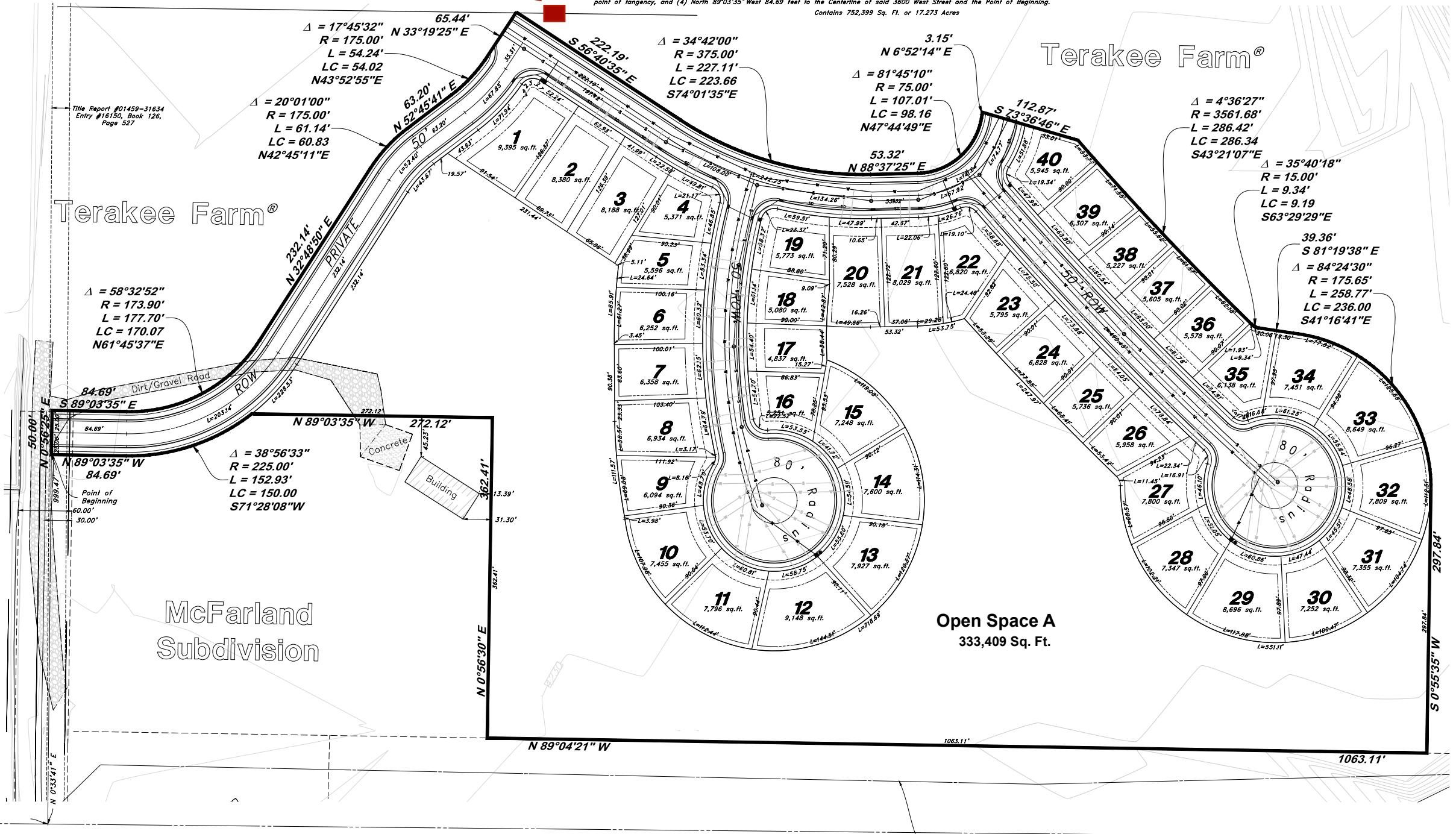
East Quarter Corner of Section 9, T6N, R2W, SLB&M, U.S. Survey

Preliminary Plan for Terakee Farm PRUD Subdivision

A part of Section 9, T6N, R2W, SLB&M, U.S. Survey
 Weber County, Utah
 January 2018

Temporary Lift Station

- LEGEND**
- Centerline
 - UGT— Buried Telephone line
 - OHT— Overhead Telephone line
 - OHP— Overhead Power line
 - UGP— Power line
 - S— Sanitary Sewer line
 - W— Culinary Water line
 - G— Gas line
 - SD— Storm Drain line
 - SW— Secondary Waterline
 - LD— Land Drain line
 - IW— Irrigation Waterline
 - F— Fence
 - P— Power Pole
 - M— Post
 - W— Water Meter
 - G— Gas Meter
 - T— Telephone Box
 - S— Sewer Manhole
 - D— Drain Manhole
 - C— Cleanout Box
 - TA— Top of Asphalt
 - EA— Edge of Asphalt
 - NG— Natural Ground
 - LG— Lip of Gutter
 - SP— Service Pole
 - LP— Light Pole
 - PP— Power Pole
 - TP— Telephone Pole
 - FH— Fire Hydrant
 - DIT— Flowline of Ditch
 - TOE— Top of Slope
 - TOP— Top of Slope
 - CO— Cleanout
 - FC— Fence
 - F— Flowline
 - DMH— Drain Manhole
 - x99.00— Spot Elevation
 - Contour
 - Asphalt
 - Concrete
 - Building
 - Catch Basin
 - C.M.P.— Corrugated Metal Pipe
 - R.C.P.— Reinforced Concrete Pipe
 - C.M.C.— Edge of Concrete
 - RWALL— Retaining Wall
 - SMH— Sewer Manhole
 - WV— Water Valve
 - CB— Catch Basin
 - DV— Diversion Box
 - TC— Top of Curb
 - SW— Sidewalk
 - GAS— Gas line Marker
 - GUY— Guy Wire
 - BLDG— Building Corner
 - Fire Hydrant
 - NG— Natural Ground
 - Water Valve
 - Light Pole
 - Power Pole w/guy
 - Deciduous Tree
 - Coniferous Tree
 - ARP— Area Reference Plat
 - Building Columns
 - LS— Landscaping



919.59' N 89°26'19" W
 South Quarter Corner of Section 9, T6N, R2W, SLB&M, U.S. Survey

Title Report #01459-31634
 Entry #118272, Book 255, Page 514

2644.81' South Quarter Corner of Section 9, T6N, R2W, SLB&M, U.S. Survey

NO.	DESCRIPTION	DATE	REV.

GREAT BASIN ENGINEERING

5746 SOUTH 1475 EAST OGDEN, UTAH 84403
 MAIN (801) 394-4515 FAX (801) 399-7544
 WWW.GREATBASINENGINEERING.COM

Phase 1

Terakee Farm PRUD Subdivision

Approx 700 North 3600 West
 Weber County, Utah
 A part of Section 9, T6N, R2W, SLB&M, U.S. Survey

5 Jan, 2018

SHEET NO. **2** of 4

16N704 - Prelim - Phase 1

ENGINEER:
 Great Basin Engineering Inc
 c/o Andy Hubbard
 5746 South 1475 East Suite 200
 Ogden, Utah 84405
 (801) 394-4515

DEVELOPER:
 Terakee Investments, LLC
 c/o Brad Blanch
 1060 East 3400 North
 North Ogden, UT 84414
 (801) 668-8565

PRELIMINARY PLAN