

LEGEND

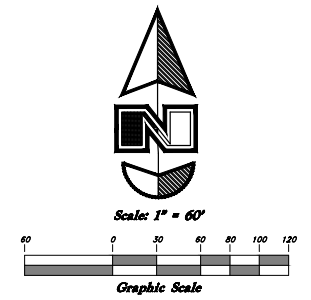
—E— Centerline	TOP Top of Slope
-UGT- Buried Telephone line	CO Cleanout
-OHT- Overhead Telephone line	FC Fence
-OHP- Overhead Power line	Flowing Flowing
-URP- Power line	DMH Drain Manhole
-S- Sanitary Sewer line	DMH Spot Elevation
-W- Cullinary Water line	Contour
-G- Gas line	Asphalt
-SD- Storm Drain line	Concrete
-SW- Secondary Waterline	Building
-LD- Land Drain line	Calch Basin
-IW- Irrigation Waterline	Corrugated Metal Pipe
-X-X-X- Fence Power Meter	Reinforced Concrete Pipe
• Post	Edge of Concrete
⊕ Water Meter	RWALL Retaining Wall
⊕ Gas Meter	SMH Sewer Manhole
⊕ Power Meter	WY Water Valve
⊕ Telephone Box	CD Catch Basin
⊕ Sewer Manhole	DV Diversion Box
⊕ Drain Manhole	TC Top of Curb
⊕ Water Manhole	SW Sidewalk
⊕ Cleanout Box	GAS Gas line Marker
TA Top of Asphalt	GUY Guy Wire
EA Edge of Asphalt	BLDG Building Corner
NG Natural Ground	Fire Hydrant
LG Lip of Gutter	NG Natural Ground
SP Service Pole	WV Water Valve
LP Light Pole	LP Light Pole
PP Power Pole	PP Power Pole w/guy
TP Telephone Pole	DT Deiduous Tree
FH Fire Hydrant	CT Coniferous Tree
DIT Flowline of Ditch	ARP Area Reference Point
TOE Toe of Slope	COL Building Columns
	LS Landscaping

PRELIMINARY DESCRIPTION

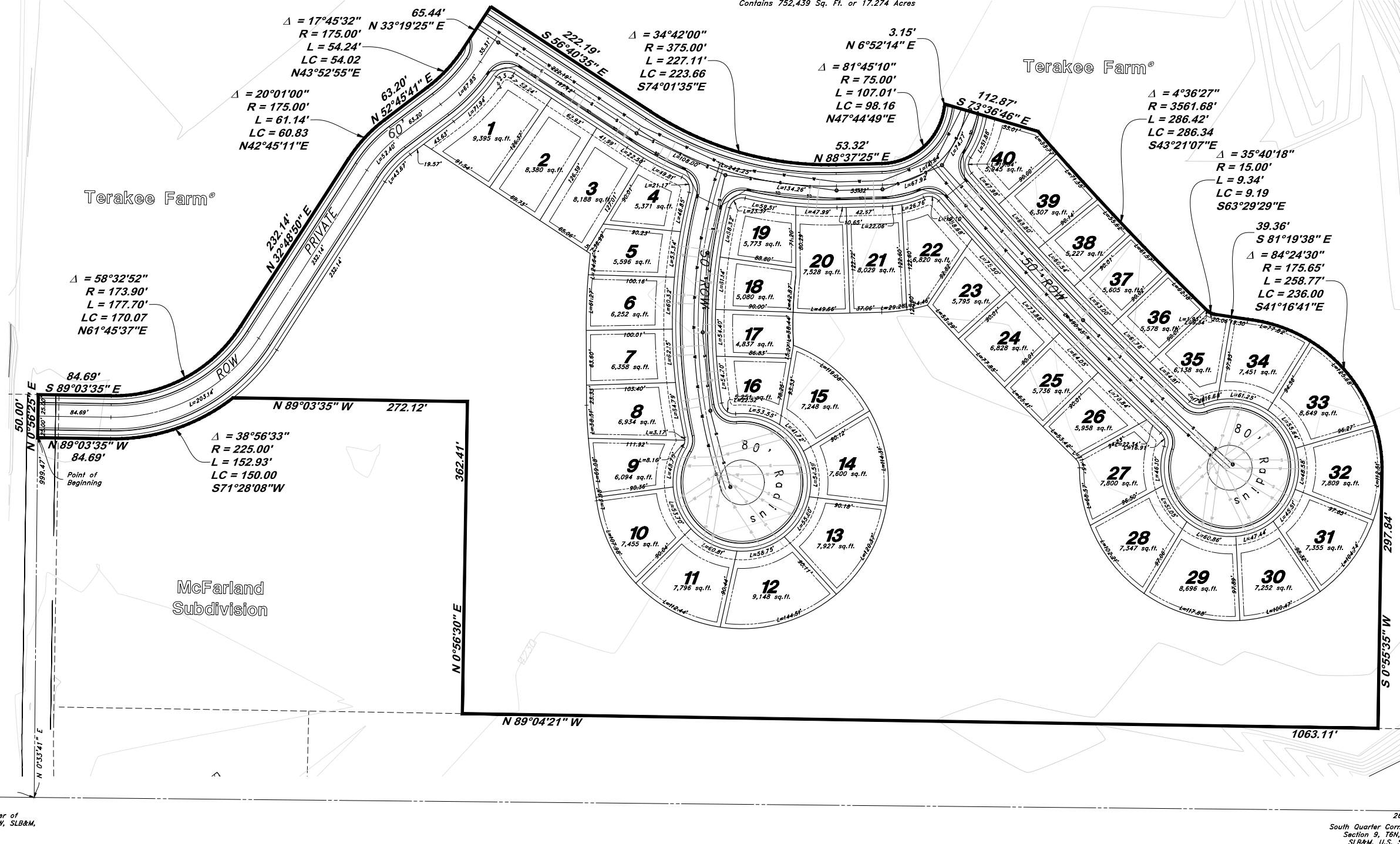
A part of Section 9, Township 6 North, Range 2 West, Salt Lake Base and Meridian, U.S. Survey, Weber County, Utah.

Beginning at a point on the Northwest corner of McFarland Subdivision, said point being 919.59 feet South 89°26'19" East and 999.47 feet North 0°33'41" East from the South Quarter Corner of said Section 9; and running thence South 89°03'35" East 84.69 feet to a point of curvature; thence Northerly along the arc of a 173.90 foot Radius curve to the left a distance of 177.70 feet (Delta Angle equals 58°32'52", Center bears North 1°02'03" East, Long Chord bears North 61°45'37" East 170.07 feet); thence North 32°48'50" East 114.77 feet to a point of curvature; thence Northerly along the arc of a 175.00 foot Radius curve to the right a distance of 61.14 feet (Delta Angle equals 20°01'00", Center bears South 57°15'19" East, Long Chord bears North 42°45'11" East 60.83 feet); thence North 52°45'41" East 63.20 feet to a point of curvature; thence Northerly along the arc of a 175.00 foot Radius curve to the left a distance of 54.24 feet (Delta Angle equals 17°45'32", Center bears North 37°14'19" West, Long Chord bears North 43°52'55" East 54.02 feet); thence North 33°19'25" East 65.44 feet, thence South 56°40'35" East 222.19 feet to a point of curvature; thence Southerly along the arc of a 375.00 foot Radius curve to the left a distance of 227.11 feet (Delta Angle equals 34°42'00", Center bears North 33°19'25" East, Long Chord bears South 74°01'35" East 223.66 feet); thence North 88°37'25" East 53.32 feet to a point of curvature; thence Northerly along the arc of a 75.00 foot Radius curve to the left a distance of 107.01 feet (Delta Angle equals 81°45'10", Center bears North 1°22'35" West, Long Chord bears North 47°44'49" East 98.16 feet); thence North 6°52'14" East 3.15 feet; thence South 73°36'46" East 112.87 feet to a point on the arc of a curve; thence Southerly along the arc of a 3561.68 foot Radius curve to the left a distance of 286.42 feet (Delta Angle equals 4°36'27", Center bears North 49°12'42" East, Long Chord bears South 43°21'07" East 286.34 feet) to a point on the arc of a curve; thence Southerly along the arc of a 15.00 foot Radius curve to the left a distance of 9.34 feet (Delta Angle equals 35°40'18", Center bears North 44°20'40" East, Long Chord bears South 63°29'29" East 9.19 feet); thence South 81°19'38" East 39.36 feet to a point of curvature; thence Southerly along the arc of a 175.65 foot Radius curve to the right a distance of 258.77 feet (Delta Angle equals 84°24'30", Center bears South 6°31'04" West, Long Chord bears South 41°16'41" East 236.00 feet); thence South 0°55'35" West 297.84 feet; thence North 89°04'21" West 1063.11 feet to the East line of McFarland; thence North 0°56'30" East 362.41 feet to the North line of McFarland Subdivision; thence along said Northerly Line the following three (3) courses: (1) North 89°03'35" West 272.12 feet to a point on the arc of a curve; (2) Southerly along the arc of a 225.00 foot Radius curve to the right a distance of 152.93 feet (Delta Angle equals 38°56'33", Center bears North 38°00'08" West, Long Chord bears South 71°28'08" West 150.00 feet) and (3) North 89°03'35" West 84.69 feet to the point of beginning.

Contains 752,439 Sq. Ft. or 17.274 Acres



East Quarter Corner of Section 9, T6N, R2W, SLB&M, U.S. Survey



919.59'
N 89°26'19" W
South Quarter Corner of Section 9, T6N, R2W, SLB&M, U.S. Survey

2644.81'
N 89°26'19" W
South Quarter Corner of Section 9, T6N, R2W, SLB&M, U.S. Survey

<p>GREAT BASIN ENGINEERING</p> <p>5746 SOUTH 1475 EAST OGDEN, UTAH 84403 MAIN (801)394-4515 S.L.C. (801)521-0222 WWW.GREATBASINENGINEERING.COM</p>	<p>DATE</p> <p>REV</p>
<p>Phase 1</p> <p>Terakee Farm® PRUD Subdivision</p> <p>Approx 700 North 3600 West Weber County, Utah</p> <p>A part of Section 9, T6N, R2W, SLB&M, U.S. Survey</p>	
<p>6 Nov, 2017</p> <p>SHEET NO.</p> <p style="font-size: 2em;">2</p> <p>of 2</p> <p>16N704 - Prelim - Phase 1</p>	