



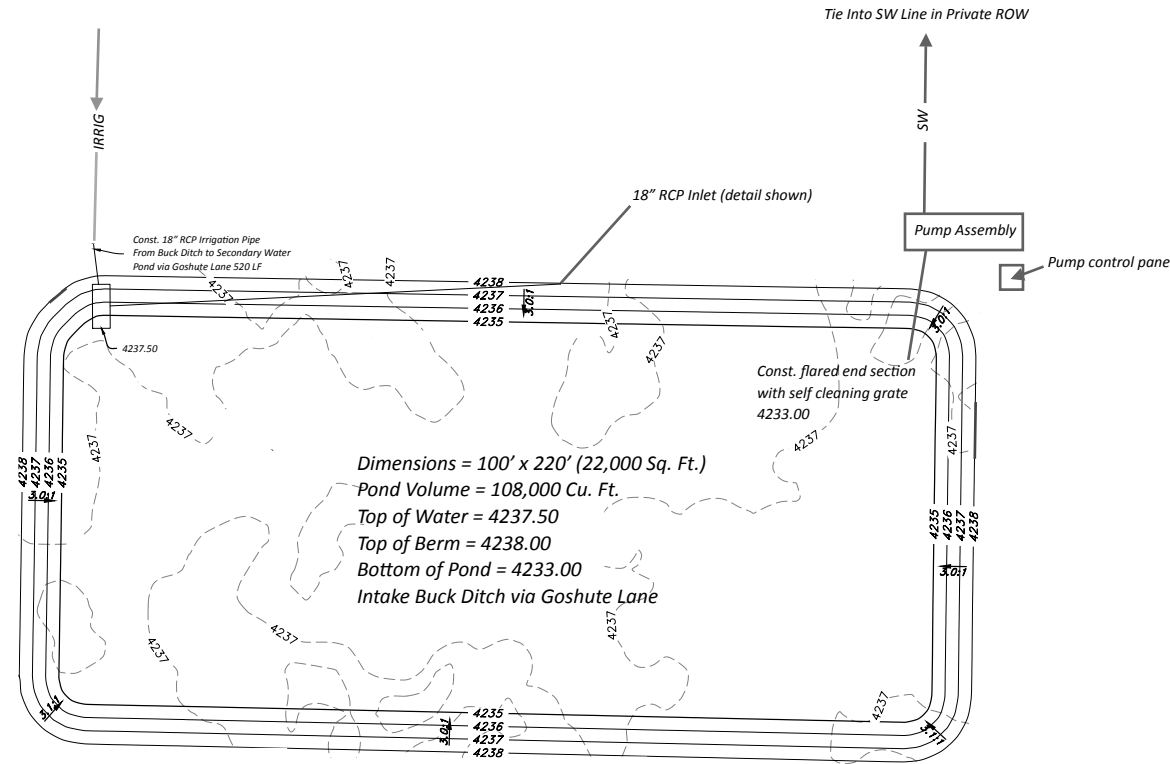
# Location: Adjacent to Lot 6-A

10' North of P.U.E.

## Legend

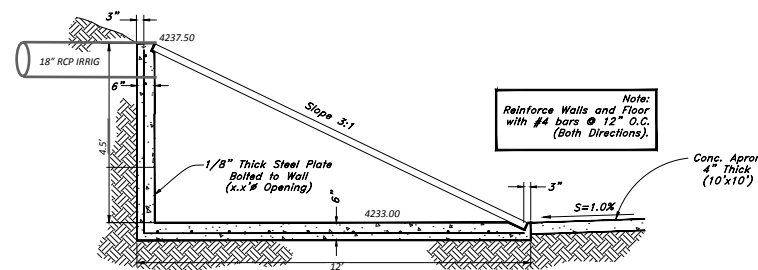
(Note: All items may not appear on drawing)

San. Sewer Manhole	⊙
Water Manhole	⊙
Storm Drain Manhole	⊙
Cleanout	⊙
Electrical Manhole	⊙
Catch Basins	⊙
Exist. Fire Hydrant	⊙
Fire Hydrant	⊙
Exist. Water Valve	⊙
Water Valve	⊙
Sanitary Sewer	—S—
Culinary Water	—C—
Gas Line	—G—
Irrigation Line	—I—
Storm Drain	—SD—
Telephone Line	—T—
Secondary Waterline	—SW—
Fire Line	—F—
Power Line	—P—
Land Drain	—LD—
Power pole w/guy	⊙
Light Pole	⊙
Fence	—*—*—
Flowline of ditch	—D—
Overhead Power line	—OHP—
Corrugated Metal Pipe	—CMP—
Concrete Pipe	—CP—
Reinforced Concrete Pipe	—RCP—
Ductile Iron	—DI—
Polyvinyl Chloride	—PVC—
Top of Asphalt	—TA—
Edge of Asphalt	—EA—
Centerline	—CL—
Flowline	—FL—
Finish Floor	—FF—
Top of Curb	—TC—
Top of Wall	—TWL—
Top of Walk	—TW—
Top of Concrete	—TCN—
Natural Ground	—NG—
Finish Grade	—FG—
Match Existing	—ME—
Fire Department Connection	—FDC—
Finish Contour	—90—
Exist. Contour	—95.35TA
Exist. Grade	—95.72TA
Ridge Line	—R—
Existing Asphalt	
New Asphalt	
Heavy Duty Asphalt	
Existing Concrete	
New Concrete	
Spill Curb & Gutter	



- Notes:
- 1) Hooper Irrigation Company water shares transferred into secondary water pond twice per week via the Buck Ditch and Goshute Lane.
  - 2) Total Weekly Pond Usage = 216,000 Cu. Ft.
  - 3) Rock perimeter walls
  - 4) Gravel pond floor

## Secondary Water Pond



Profile View Detail of Inlet Structure

Not to Scale

Not to Scale

TENTATIVE FINAL



**GREAT BASIN ENGINEERING**  
 5746 SOUTH 1475 EAST OGDEN, UTAH 84403  
 MAIN (801) 994-4515 S.L.C. (801) 521-0222 FAX (801) 992-7544  
 WWW.GREATBASINENGINEERING.COM

**Plan & Profile**  
**Terakee Village No. 1**  
 Approx. 900 South 4500 West  
 Weber County, Utah  
 A part of Section 17, T6N, R2W, S16&M, U.S. Survey

16 Nov, 2018  
 SHEET NO.  
**10**  
 of 11  
 16N719 - AM