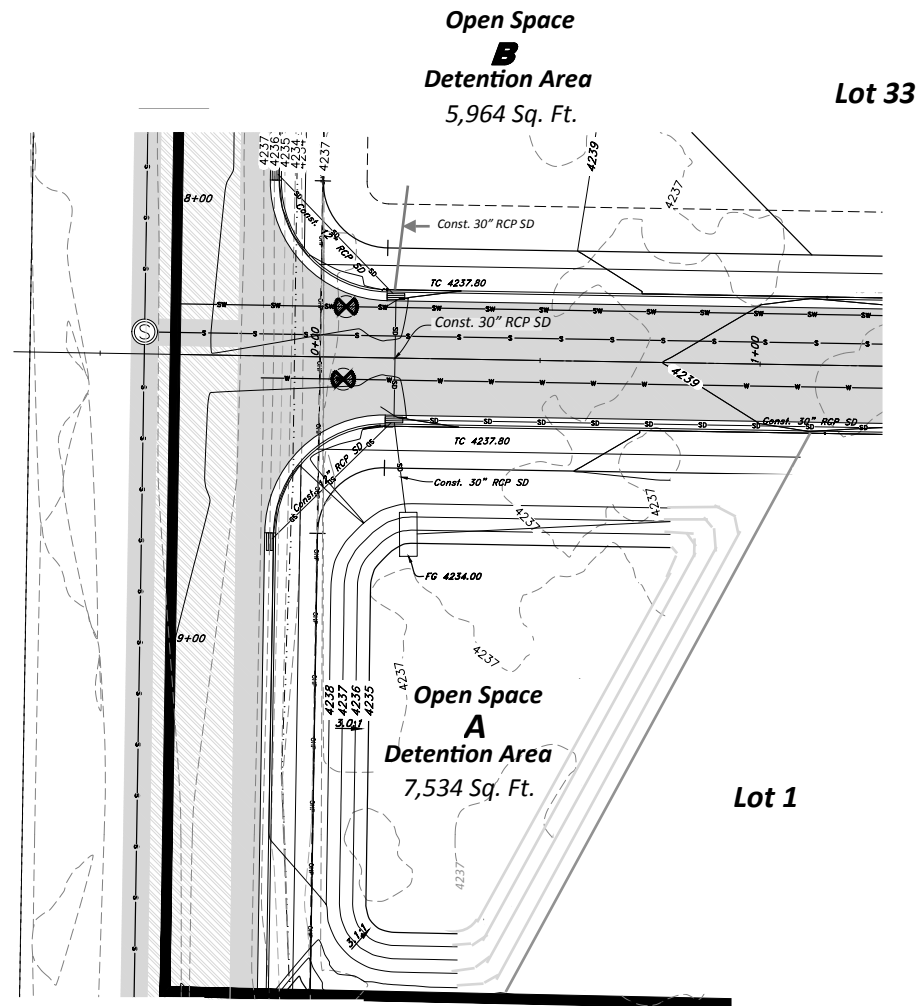




Legend

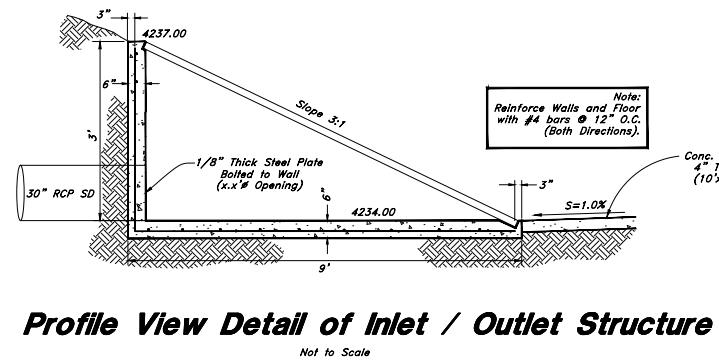
(Note: All items may not appear on drawing)

- San. Sewer Manhole
- Water Manhole
- Storm Drain Manhole
- Cleanout
- Electrical Manhole
- Catch Basins
- Exist. Fire Hydrant
- Exist. Water Valve
- Water Valve
- Sanitary Sewer
- Culinary Water
- Gas Line
- Irrigation Line
- Storm Drain
- Telephone Line
- Secondary Waterline
- Power Line
- Fire Line
- Land Drain
- Power pole
- Power pole w/guy
- Light Pole
- Fence
- Flowline of ditch
- Overhead Power line
- Corrugated Metal Pipe
- Concrete Pipe
- Reinforced Concrete Pipe
- Ductile Iron
- Polyvinyl Chloride
- Top of Asphalt
- Edge of Asphalt
- Centerline
- Flowline
- Finish Floor
- Top of Curb
- Top of Wall
- Top of Walk
- Top of Concrete
- Natural Ground
- Finish Grade
- Match Existing
- Fire Department Connection
- Finish Contour
- Exist. Contour
- Finish Grade
- Exist. Grade
- Ridge Line
- Existing Asphalt
- New Asphalt
- Heavy Duty Asphalt
- Existing Concrete
- New Concrete
- Spill Curb & Gutter

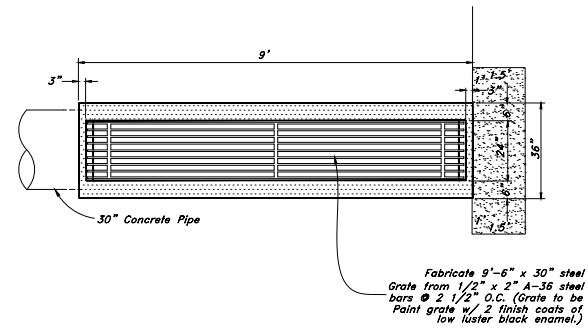


Detention Ponds Opens Spaces A & B

13,498 Square Feet
 Required Volume = 17,452 Cu. Ft.
 Provided Volume = 25,032 Cu. Ft.
 Top of Water = 4237.00
 Top of Berm = 4238.00
 Bottom of Pond = 4234.00
 Floor Inlet/Outlet Structure = 4234.00
 Ponds owned and maintained by Terakee Farm as defined in CC&Rs under Open Space Preservation Plan
 Open Space Detention Area B follows same design as Open Space Detention Area A
 Detention Ponds connected via 30" RCP Storm Drain



Profile View Detail of Inlet / Outlet Structure
 Not to Scale



Plan View Detail of Inlet / Outlet Structure
 Not to Scale

GREAT BASIN ENGINEERING
 5746 SOUTH 1475 EAST OGDEN, UTAH 84403
 MAIN (801) 994-4515 • S.L.C. (801) 521-0222 • FAX (801) 992-7544
 WWW.GREATBASINENGINEERING.COM

Plan & Profile
Terakee Village No. 1
 Approx. 900 South 4500 West
 Weber County, Utah
 A part of Section 17, T6N, R2W, S18&M, U.S. Survey

16 Nov, 2018
 SHEET NO.
10 of 11
 16N719 - AM

TENTATIVE FINAL

