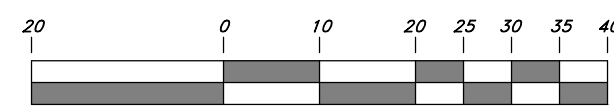
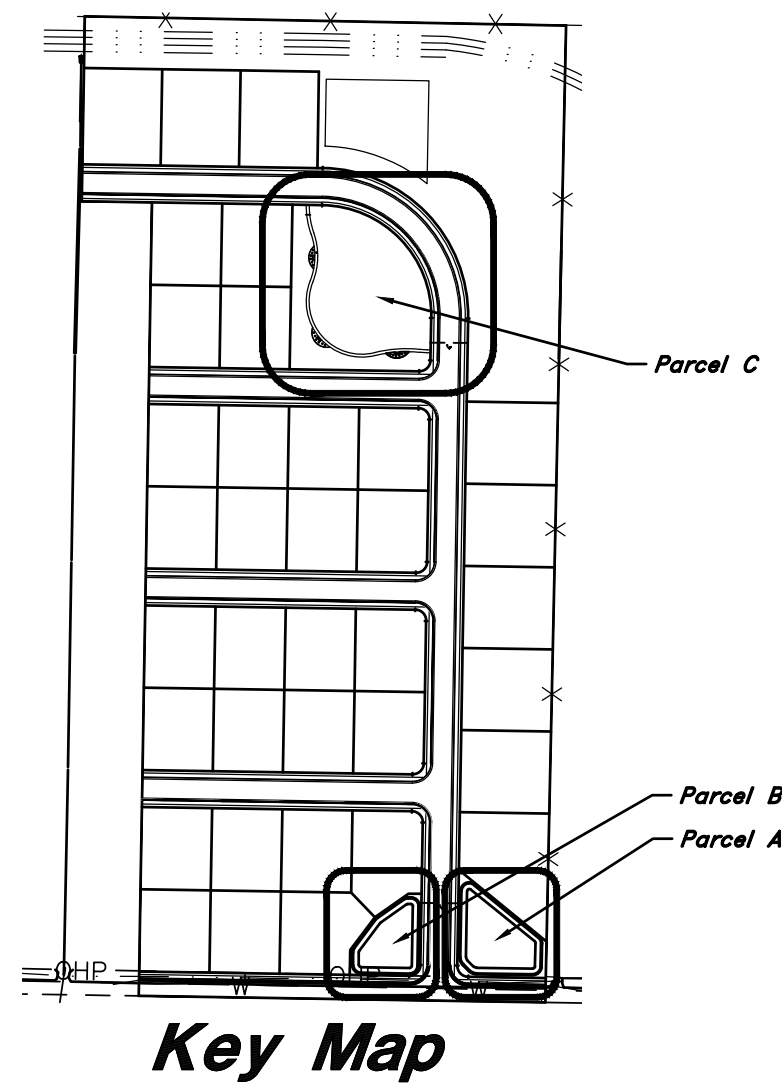


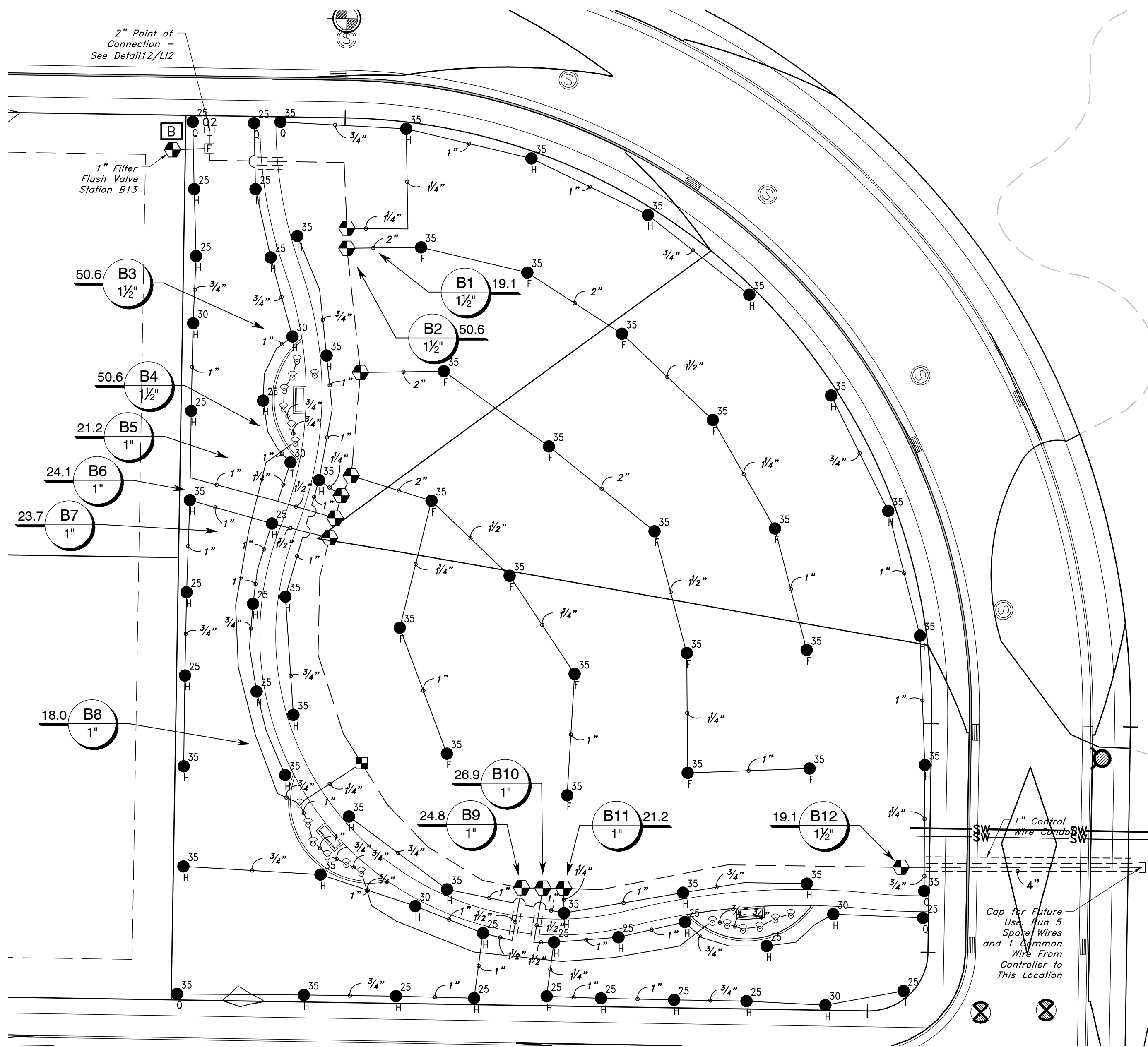
Scale: 1" = 20'



Graphic Scale



Key Map



Parcel 'C'

IRRIGATION NOTES

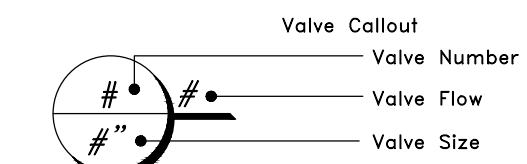
1. Install irrigation wire under paved areas in separate PVC sleeve, size for number of wires.
2. Examine the site conditions, the subgrade and verify elevations. Notify the architect in writing of any unsatisfactory conditions. Do not begin landscape work until unsatisfactory conditions have been resolved.
3. Verify locations of all utilities and site features prior to any digging. Any damage to existing utilities and site features caused by this contractor shall be repaired at no additional expense to the owner.
4. Before any trenching, excavation, or digging, the contractor shall have the area 'Blue Staked' and contact the appropriate utility companies. Contractor shall protect all utilities from damage.
5. All lines shall slope to drain, add manual drains at all mainline low points as necessary for complete drainage of the entire system. Indicate all drain locations on record drawings.
6. This drawing is diagrammatic and is intended to convey the general layout of irrigation system components. Field adjustments may be necessary to maintain full coverage in actual site conditions. Contact the landscape architect if significant changes are necessary. The contractor shall assume full responsibility for revisions to the irrigation system if the irrigation system is installed when site conditions differ from plan layout and the landscape architect was not informed.
7. Lateral and main lines shall be laid in common trenches in landscape areas wherever possible.
8. All piping and wiring under pavement shall be run through separate sleeves. Control wires not laid in a common trench with a main line shall be installed in a conduit of sufficient size.
9. All irrigation equipment not detailed shall be installed as per manufacturer recommendations, specifications, and details.
10. This system is designed to operate at 60 psi for rotor heads, 30 psi for spray heads, and 40 psi for all drip emitters.
11. The irrigation water source is _____. Pressure at the pump is expected to be _____ psi. If actual pressure varies from the expected, contact landscape architect.
12. Supply products as specified. No substitutions will be allowed unless pre-approved in writing by the owner or landscape architect.
13. Contractor to supply all keys and attic stock per the specifications.
14. Contractor to shut down and winterize the irrigation system at the end of the first season and turn on the system at the beginning of the following season. This work is to be done in the presence of the owners' maintenance personnel.

IRRIGATION SCHEDULE

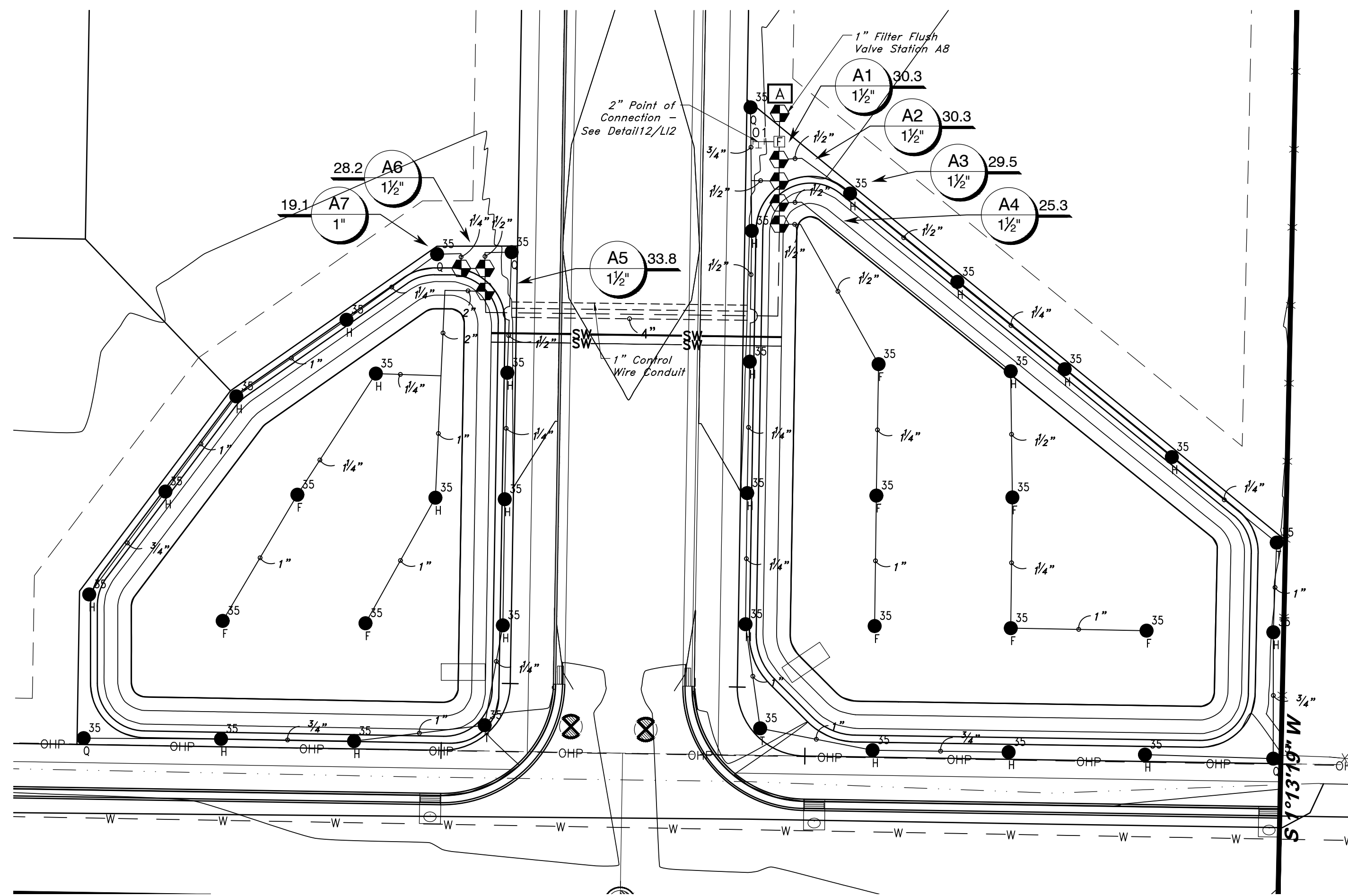
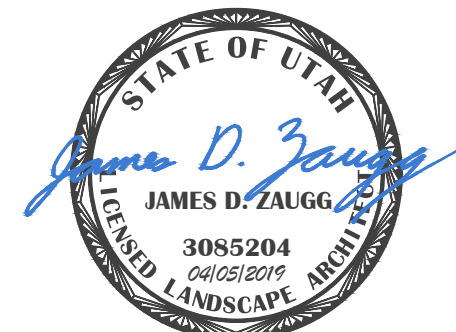
SYMBOL	MANUFACTURER/MODEL/DESCRIPTION	PSI	GPM	RADIUS
● ²⁵ ARC	Hunter I-20-06-MPR Turf Rotor, 6.0" Pop-Up, Adjustable and Full Circle. Plastic Riser. Drain Check Valve. MPR Nozzle.	55		25'
● ³⁰ ARC	Hunter I-20-06-MPR Turf Rotor, 6.0" Pop-Up, Adjustable and Full Circle. Plastic Riser. Drain Check Valve. MPR Nozzle.	55		30'
● ³⁵ ARC	Hunter I-20-06-MPR Turf Rotor, 6.0" Pop-Up, Adjustable and Full Circle. Plastic Riser. Drain Check Valve. MPR Nozzle.	55		35'

SYMBOL	MANUFACTURER/MODEL/DESCRIPTION	DETAIL
⬢	Hunter ICV-G-FS-R 1", 1-1/2", 2", and 3" Plastic Electric Remote Control Valves, Globe Configuration, with NPT Threaded Inlet/Outlet With Filter Sentry and Reclaimed Water ID, Purple Handle.	
B	Hunter PC-400 with (03) PCM-300 Light Commercial & Residential Controller, 13-station expanded module controller, 120 VAC, Outdoor model	
A	Hunter PC-400i with (02) PCM-300 Light Commercial & Residential Controller, 10-station expanded module controller, 120 VAC, Indoor model	
F	Amiad 2" T Brush Away Filter Semi-Automatic Plastic Filter with 130 Micron disc element, and clog indicator. Install in Strong Box SBBC-30AL	
○ ⁰¹	Point of Connection 2"	
○ ⁰²	Point of Connection 2"	

— Irrigation Lateral Line: PVC Schedule 40
 - - - Irrigation Mainline: PVC Schedule 40
 --- Pipe Sleeve: PVC Class 200 SDR 21



1" PVC Sch 40 Control Wire Conduit



Parcel 'B'

Parcel 'A'

GREAT BASIN ENGINEERING
 5746 SOUTH 11475 EAST, OGDEN, UTAH 84403
 MAIN (801) 351-4515, SLLC (801) 521-0222, FAX (801) 392-7574
 WWW.GRETBASINENGINEERING.COM

PERMIT SET - NOT FOR CONSTRUCTION

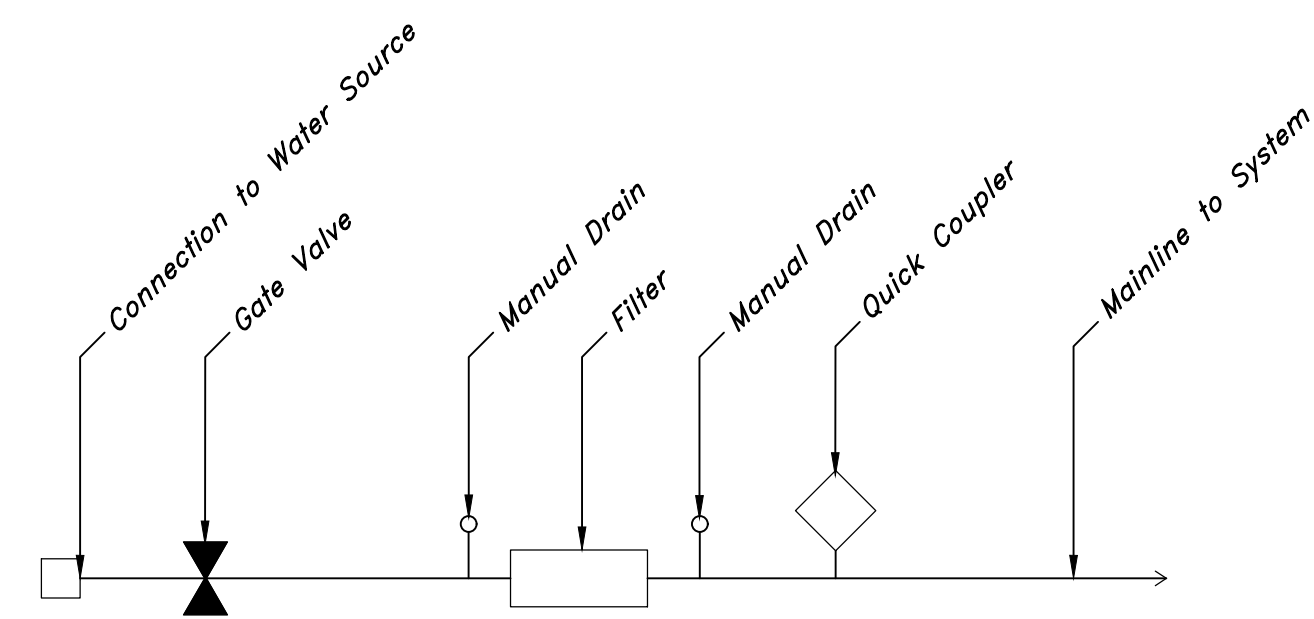
Irrigation Plan
Terakee Village No. 1
 Approx. 900 South 4500 West
 Weber County, Utah
 A part of Section 17, T6N, R2W, SLB&M, U.S. Survey

5 Apr, 2019

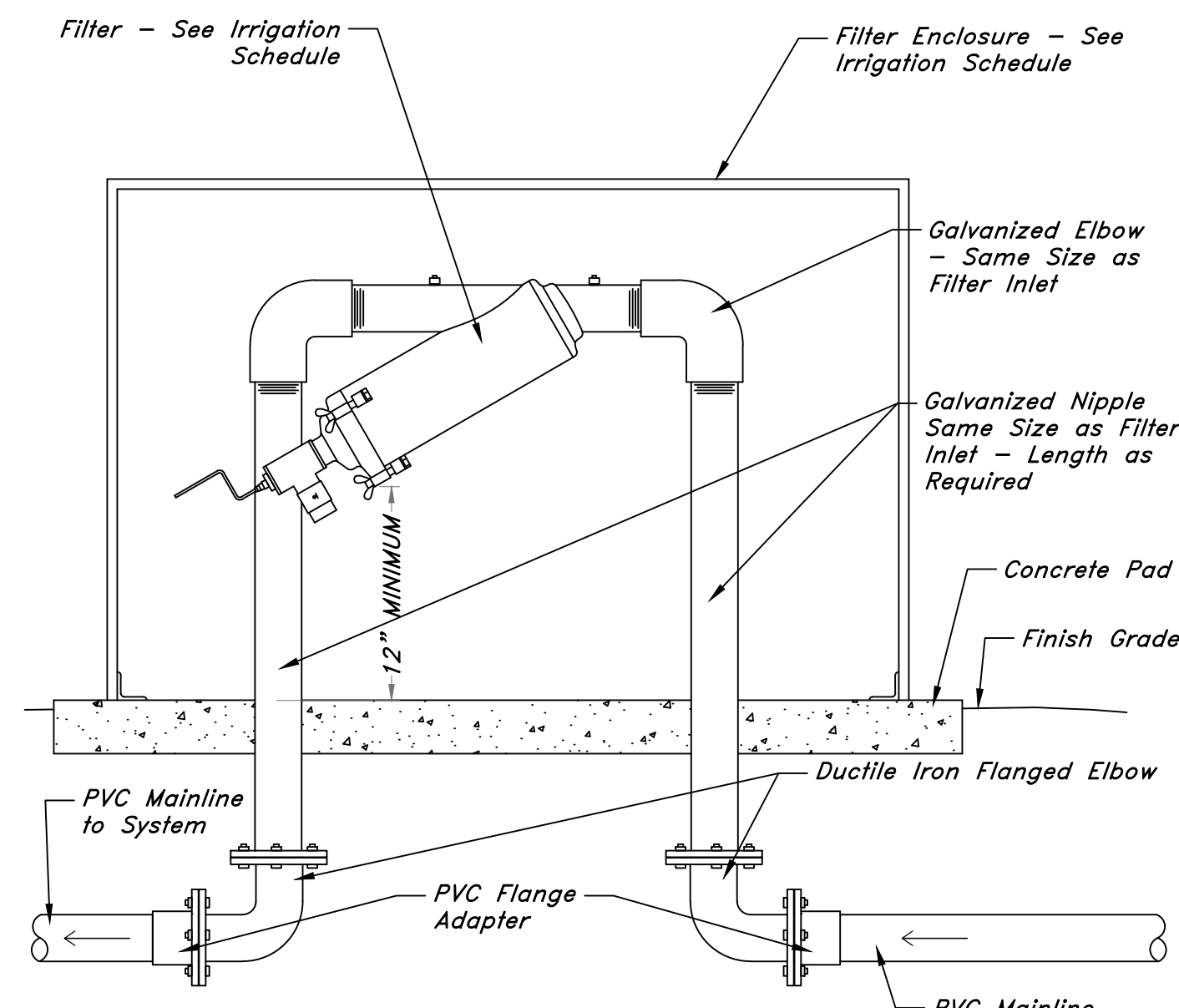
SHEET NO.

L11

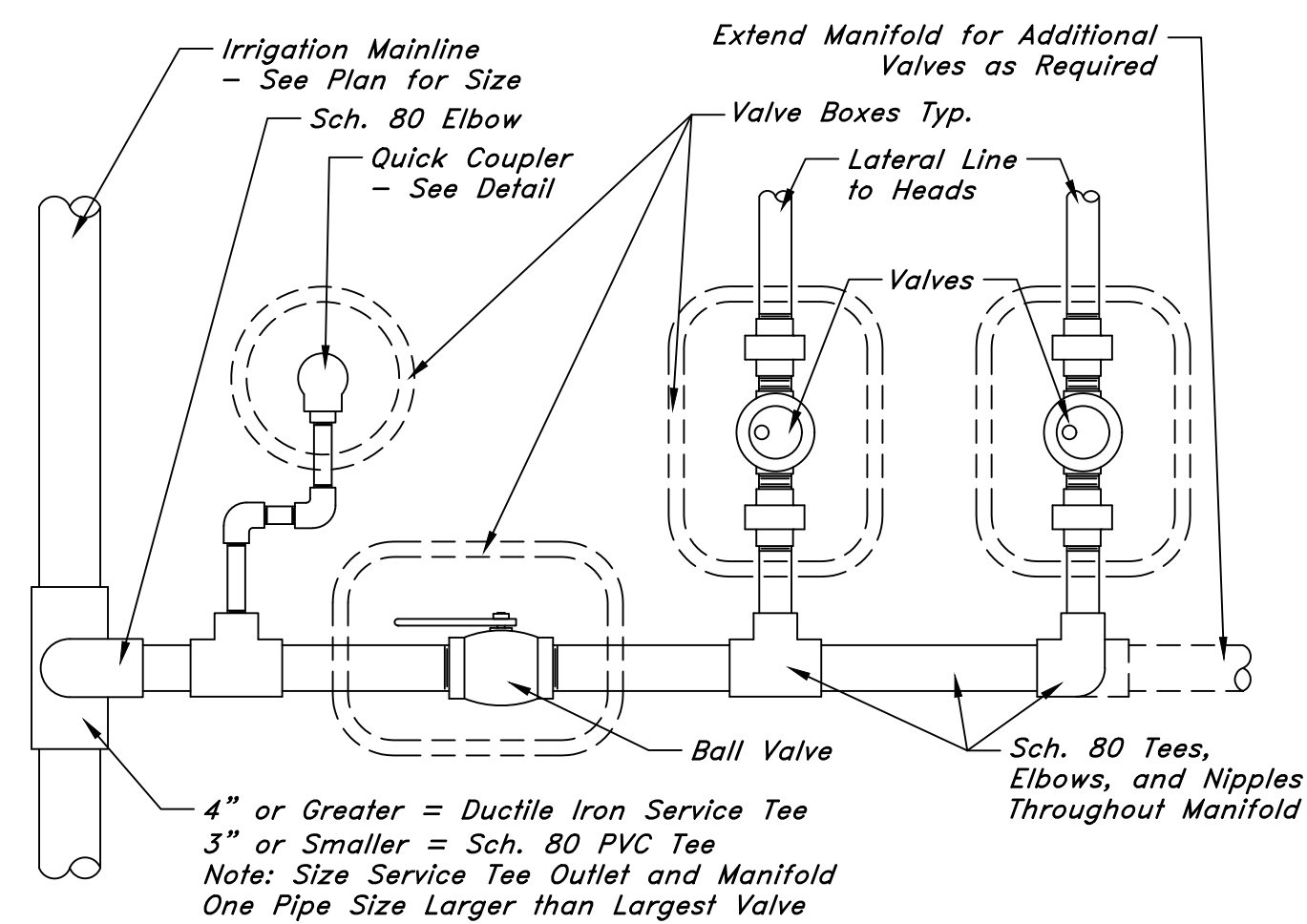
16N719 - AM



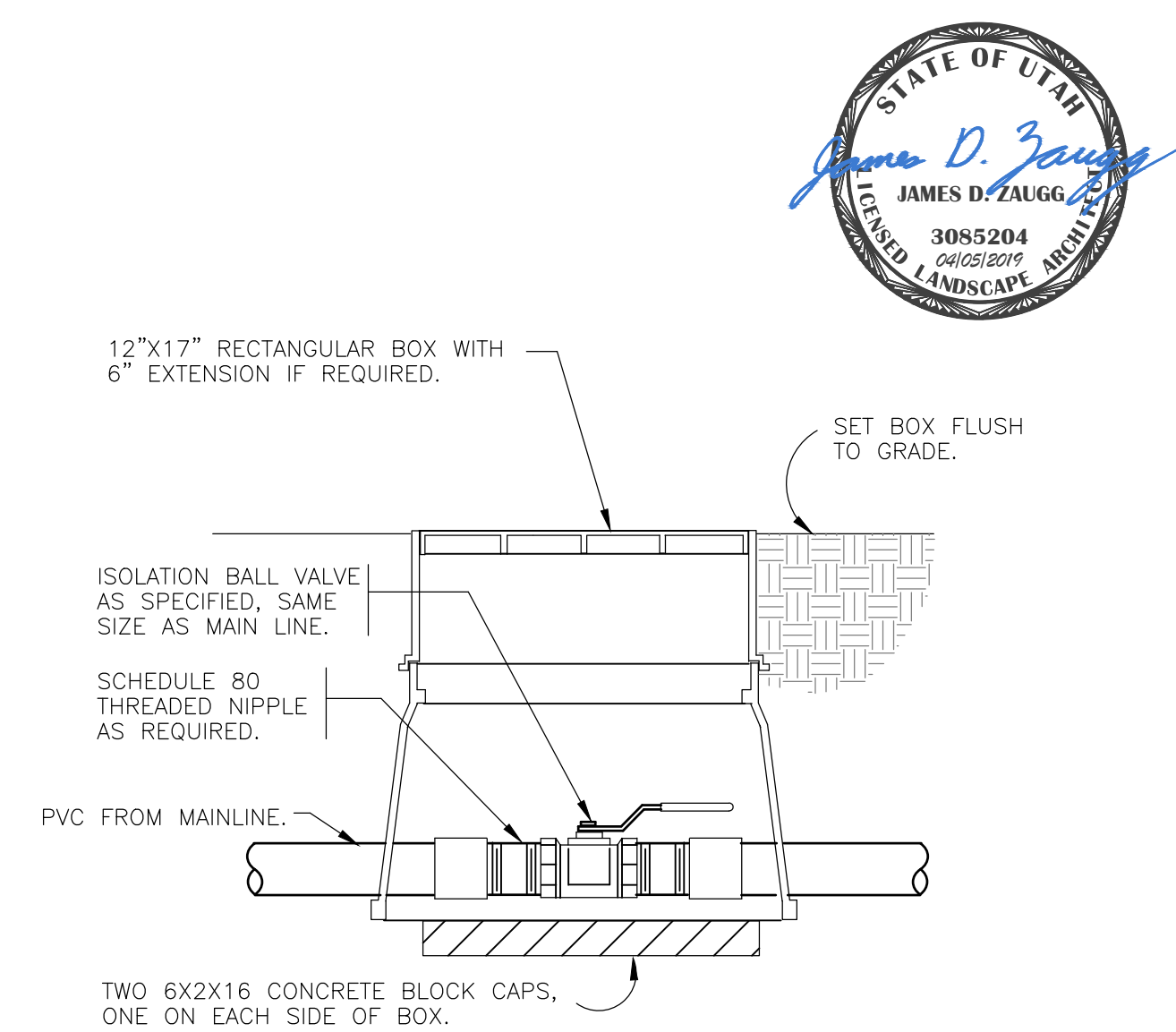
12 POC Schematic
NTS
DETAIL-FILE



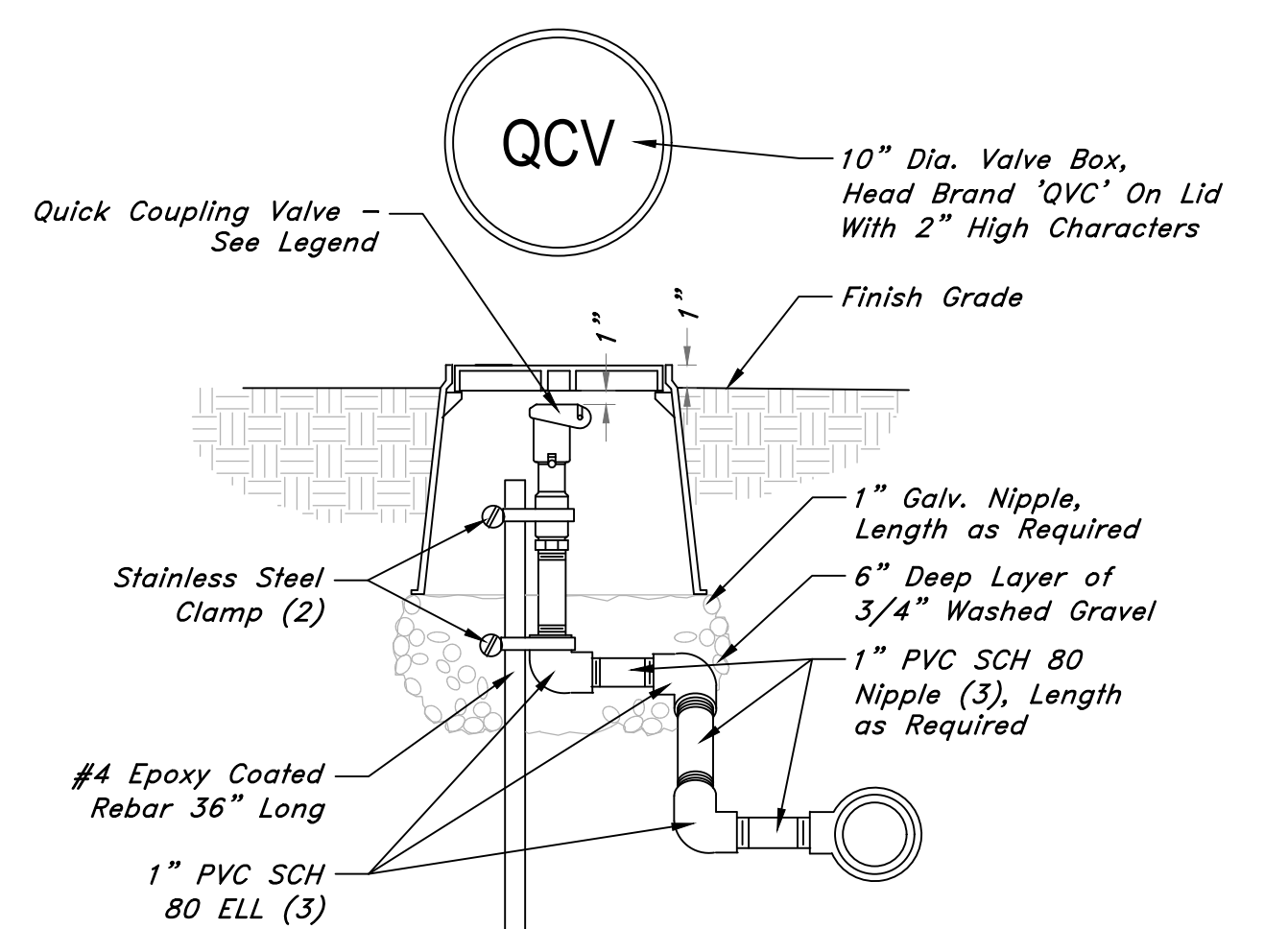
11 FILTER IN ENCLOSURE
1" = 1'-0"
DETAIL-FILE



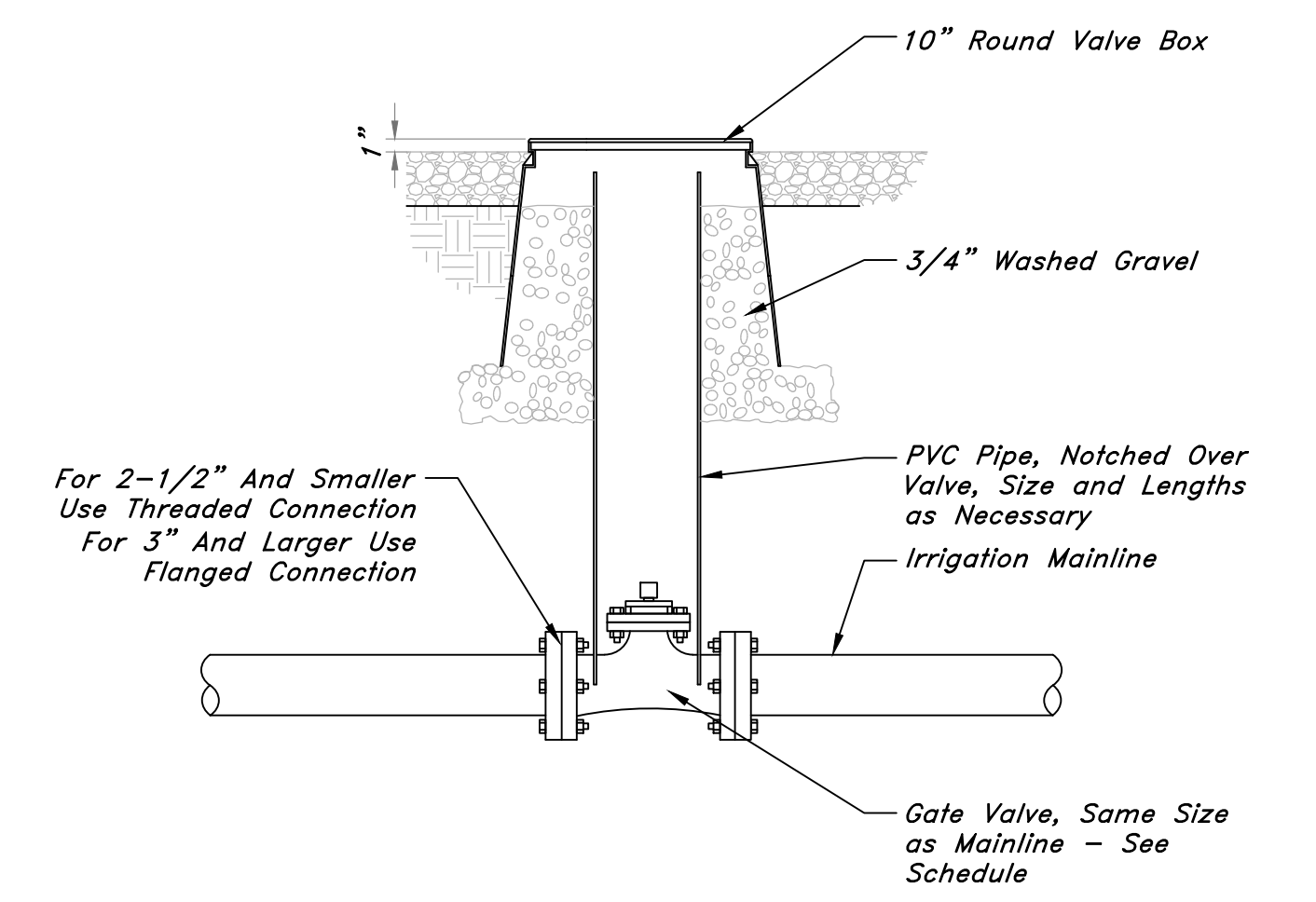
10 VALVE MANIFOLD
1" = 1'-0"
DETAIL-FILE



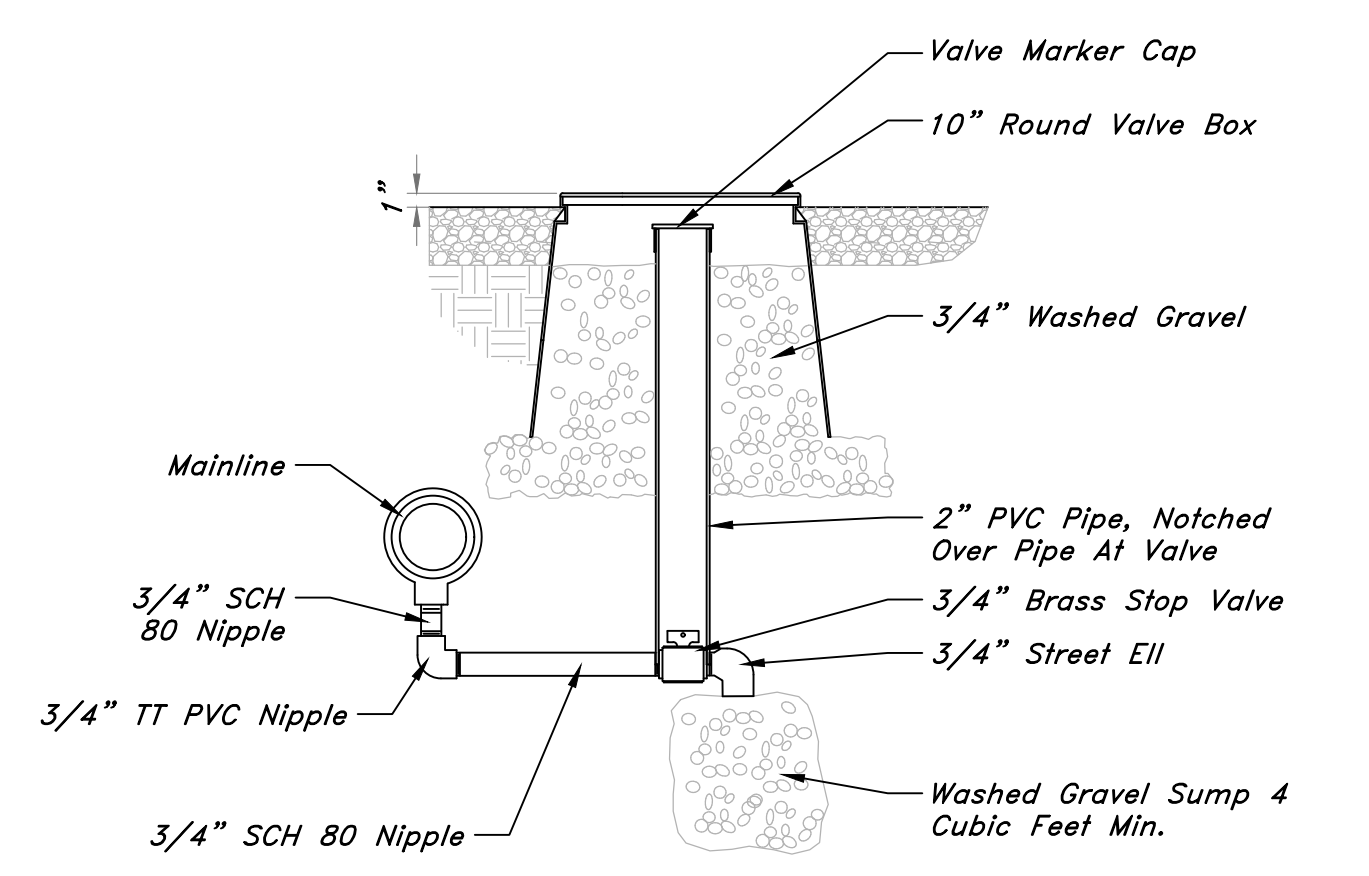
9 BRASS BALL ISOLATION VALVE AT MANIFOLD
1 1/2" = 1'-0"
FX-IR-FX-ISOV-03



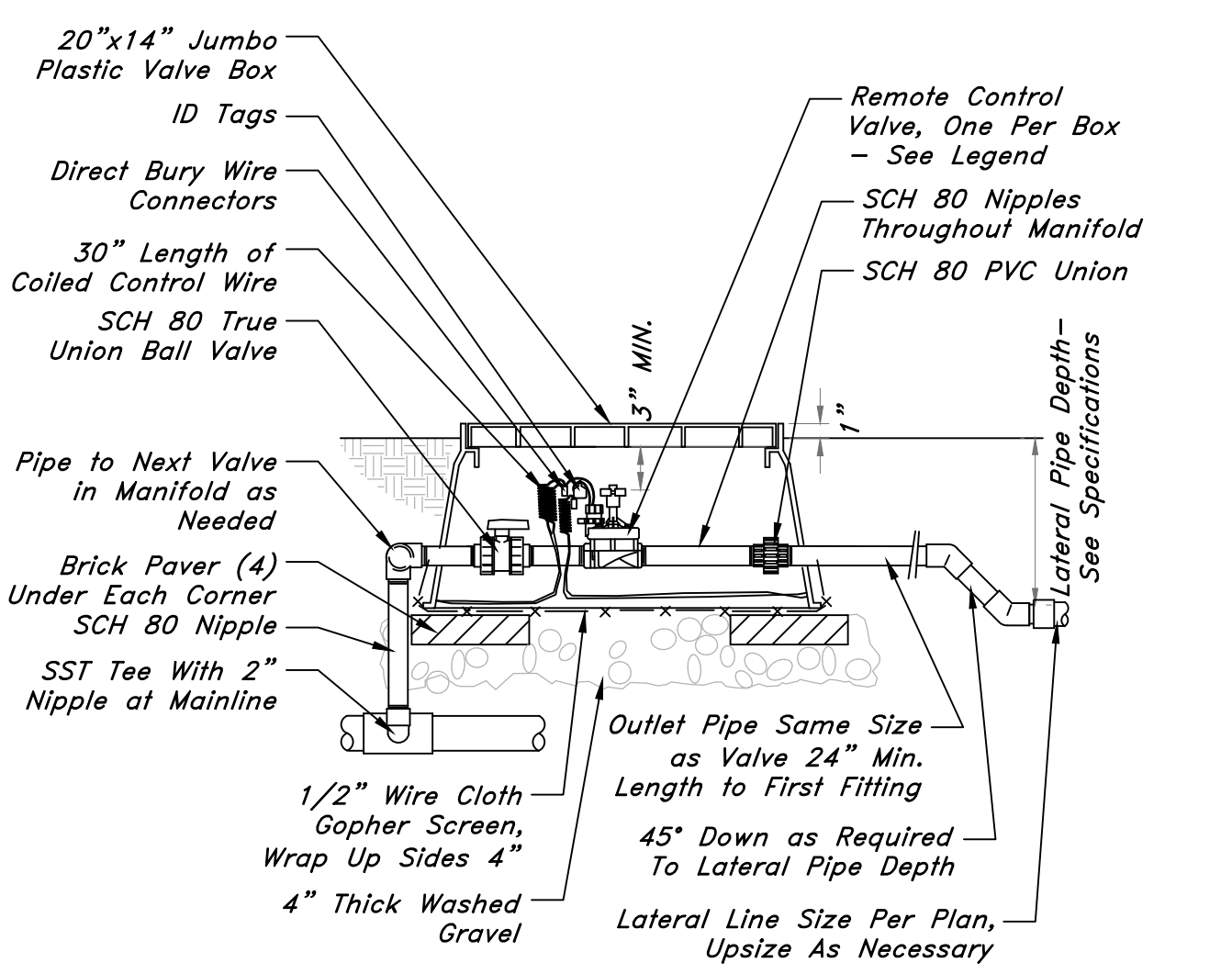
8 QUICK COUPLER
1 1/2" = 1'-0"
32 8406.43-06



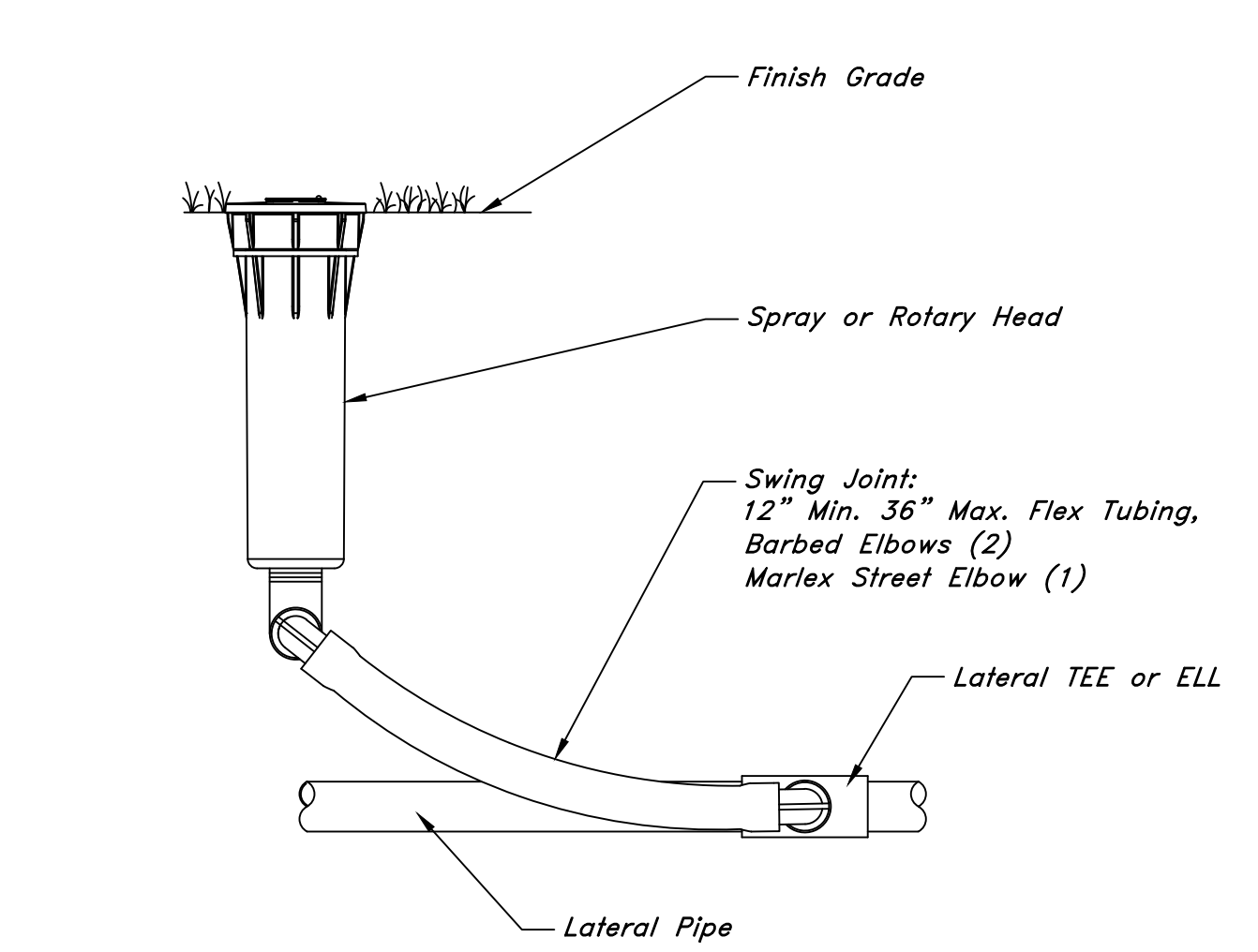
7 GATE VALVE
1 1/2" = 1'-0"
32 8406.33-06



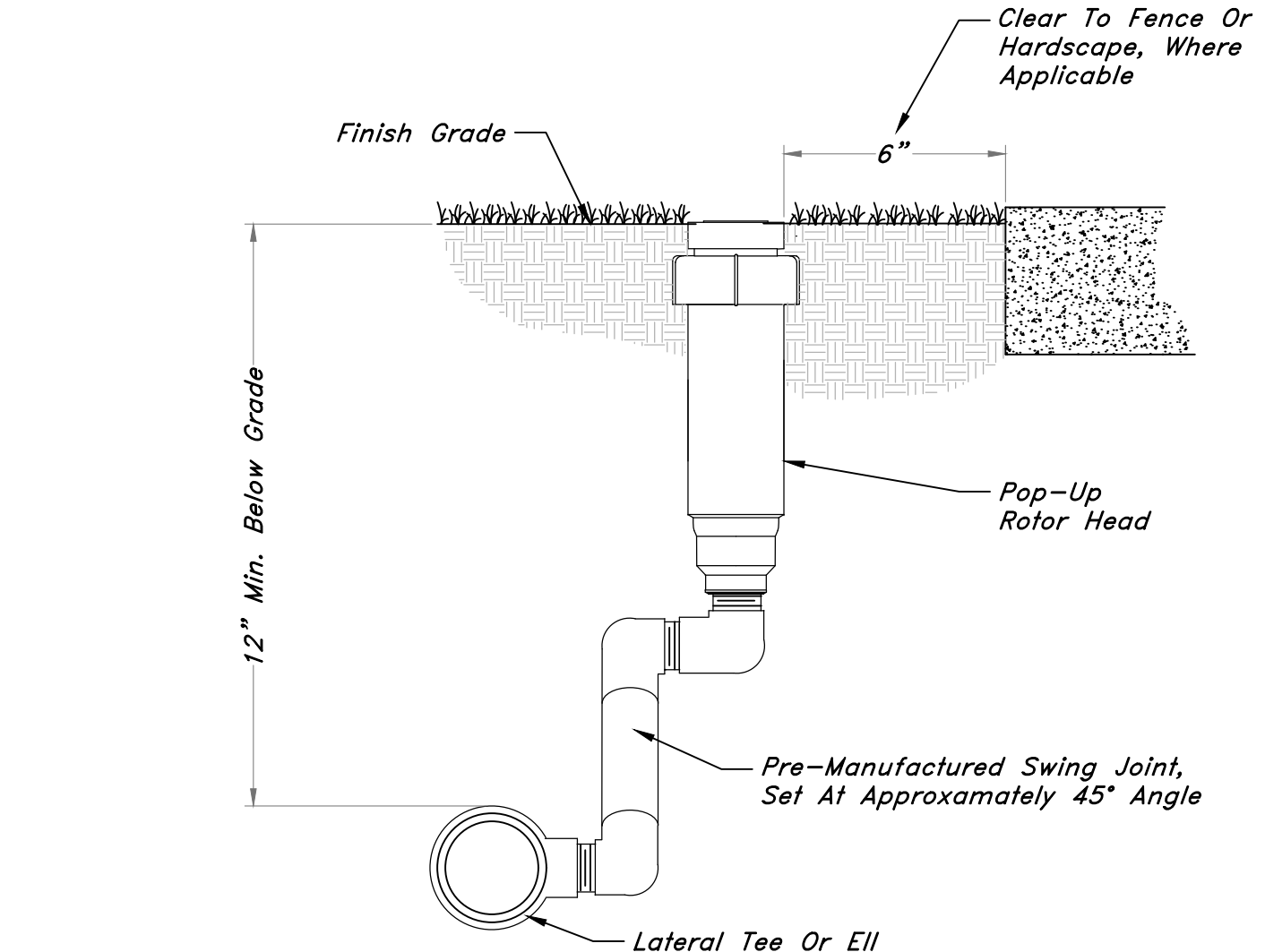
6 MANUAL DRAIN
1 1/2" = 1'-0"
32 8409.86-01



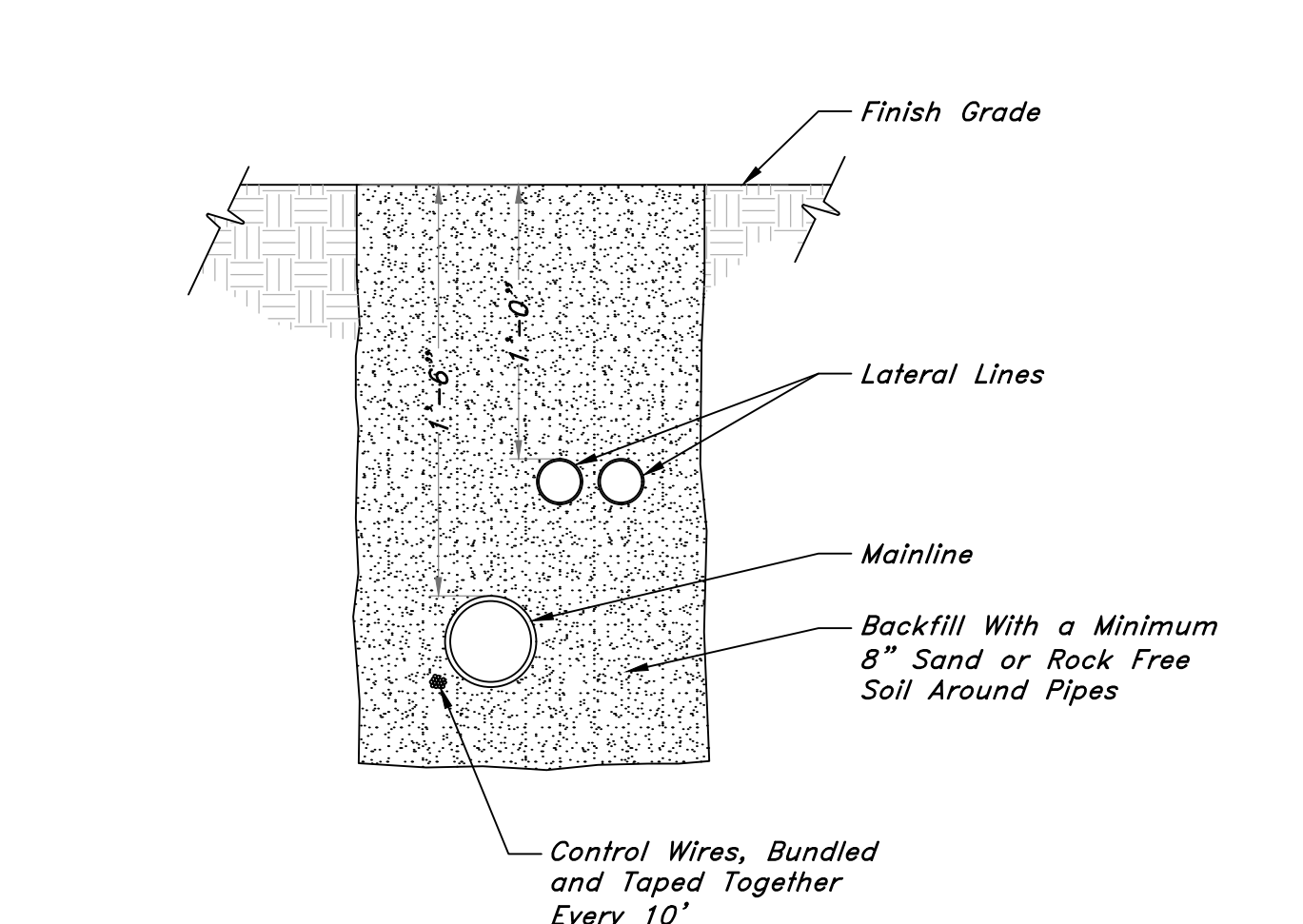
5 REMOTE CONTROL VALVE
1" = 1'-0"
32 8406.13-08



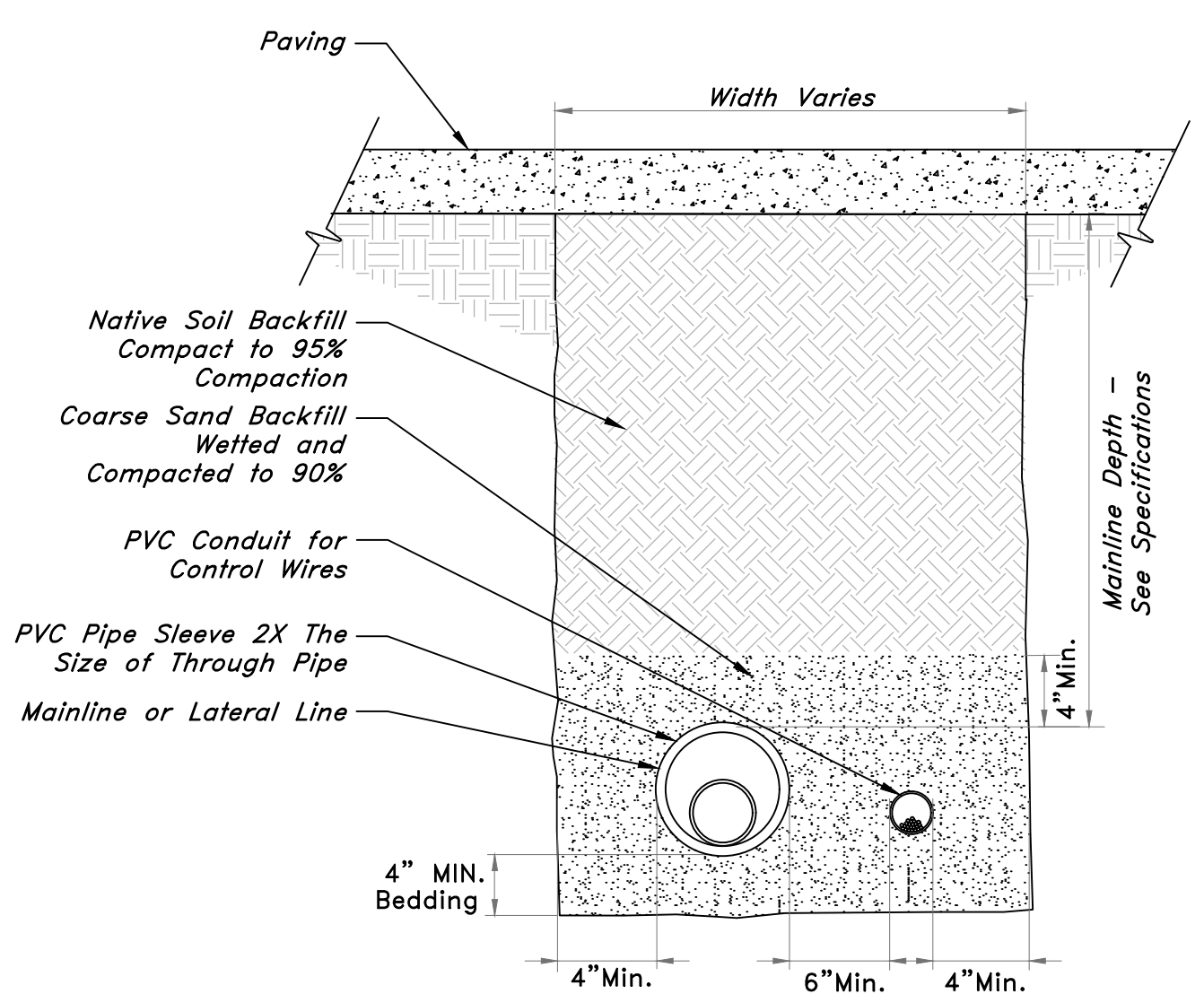
4 POP-UP SPRAY HEAD
NTS
DETAIL-FILE



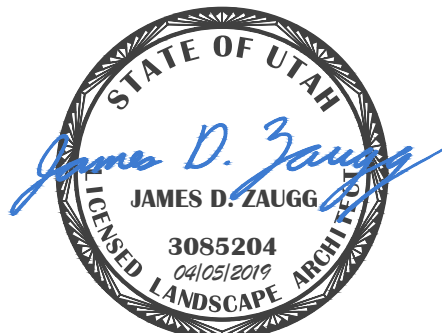
3 POP-UP ROTOR HEAD
NTS
32 8403.01-01



2 TRENCHING
1 1/2" = 1'-0"
32 8401-02



1 SLEEVING
1 1/2" = 1'-0"
32 8401-01



GREAT BASIN ENGINEERING
 5746 SOUTH 1475 EAST, OGDEN, UTAH 84403
 MAIN 901.351.4515 FAX 901.351.9275
 WWW.GREATBASINENGINEERING.COM

PERMIT SET - NOT FOR CONSTRUCTION

Terakee Village No. 1
 Irrigation Plan
 Approx. 900 South 4500 West
 Weber County, Utah
 A part of Section 17, T6N, R2W, SLB&M, U.S. Survey

5 Apr, 2019
 SHEET NO.
L12
 16N719 - AM

PLANTING NOTES

1. EXAMINE THE SITE CONDITIONS, THE SUBGRADE AND VERIFY THE DEPTHS OF TOPSOIL AND MULCH. NOTIFY THE ARCHITECT IN WRITING OF ANY UNSATISFACTORY CONDITIONS. DO NOT BEGIN LANDSCAPE WORK UNTIL UNSATISFACTORY CONDITIONS HAVE BEEN RESOLVED.
2. VERIFY LOCATIONS OF ALL UTILITIES PRIOR TO ANY DIGGING. ANY DAMAGE TO EXISTING UTILITIES CAUSED BY THIS CONTRACTOR SHALL BE REPAIRED AT NO ADDITIONAL EXPENSE TO THE OWNER.
3. TOPSOIL IS TO BE IMPORTED TO THE SITE. SCREEN AND AMEND AS NECESSARY TO MEET "ACCEPTABLE" STANDARDS FOR TOPSOIL AS DESCRIBED IN "TOPSOIL QUALITY GUIDELINES FOR LANDSCAPING" (KOEING, ISAMAN, UTAH STATE UNIVERSITY) <http://extension.usu.edu/files/publications/publication/AG-S0-02.pdf> CONTRACTOR IS RESPONSIBLE FOR PROVIDING 6" OF TOPSOIL FOR TURF AND 12" OF TOPSOIL FOR SHRUBS AND TREES.
4. THE LANDSCAPE CONTRACTOR IS RESPONSIBLE FOR FINISH GRADE ELEVATIONS. ALLOW FOR A MINIMUM OF 6" THICK MULCH LAYER. COORDINATE ROUGH GRADING WITH THE GENERAL CONTRACTOR.
5. ALL PLANT MATERIAL MUST MEET THE SIZES AS INDICATED ON THE PLANT SCHEDULE. PLANT MATERIAL THAT DOES NOT MEET THE QUALITY STANDARDS OF THE PROJECT WILL BE REFUSED BY THE LANDSCAPE ARCHITECT.
6. TURFGRASS SOD SHALL BE CERTIFIED NUMBER 1 QUALITY/PREMIUM SOD - SEE SPECIFICATIONS


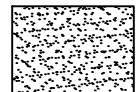
PLANT SCHEDULE

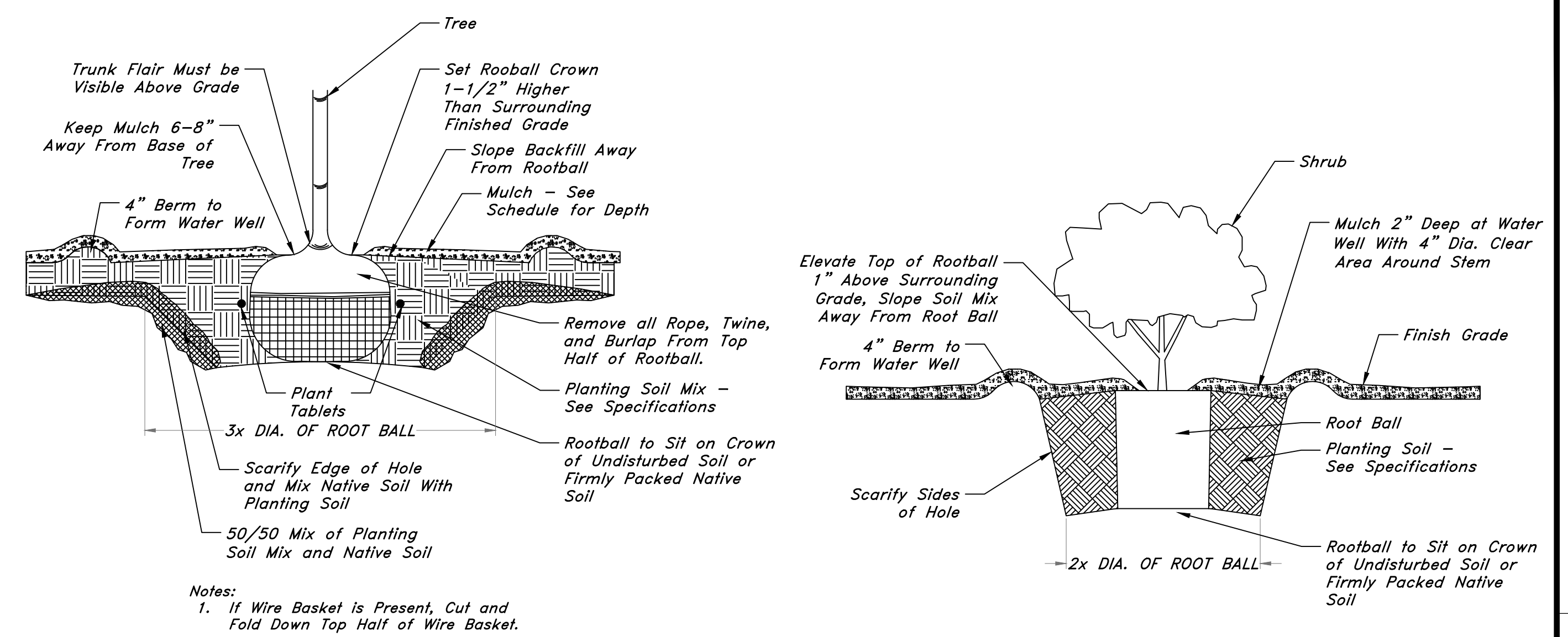
TREES	QTY	BOTANICAL NAME / COMMON NAME	CONT	CAL
GYM DIO	4	<i>Gymnocladus dioica</i> 'Espresso' / Kentucky Coffeetree	B & B	2"Cal
MAL BRA	12	<i>Malus x 'Branzam'</i> TM / Brandywine Crab Apple	B&B	2"Cal
QUE MAC	4	<i>Quercus macrocarpa</i> / Burr Oak	B&B	2"Cal
ZEL VIL	19	<i>Zelkova serrata</i> 'Village Green' / Sawleaf Zelkova	B&B	2"Cal

SHRUBS	QTY	BOTANICAL NAME / COMMON NAME	SIZE
PIN SLO	6	<i>Pinus mugo</i> 'Slowmound' / Mugo Pine	5 gal
ROS CAR	6	<i>Rosa x 'Carefree Wonder'</i> / Rose	1 gal

ANNUALS/PERENNIALS	QTY	BOTANICAL NAME / COMMON NAME	SIZE
HEM BUS	10	<i>Hemerocallis x 'Little Business'</i> / Little Business Daylily	1 gal

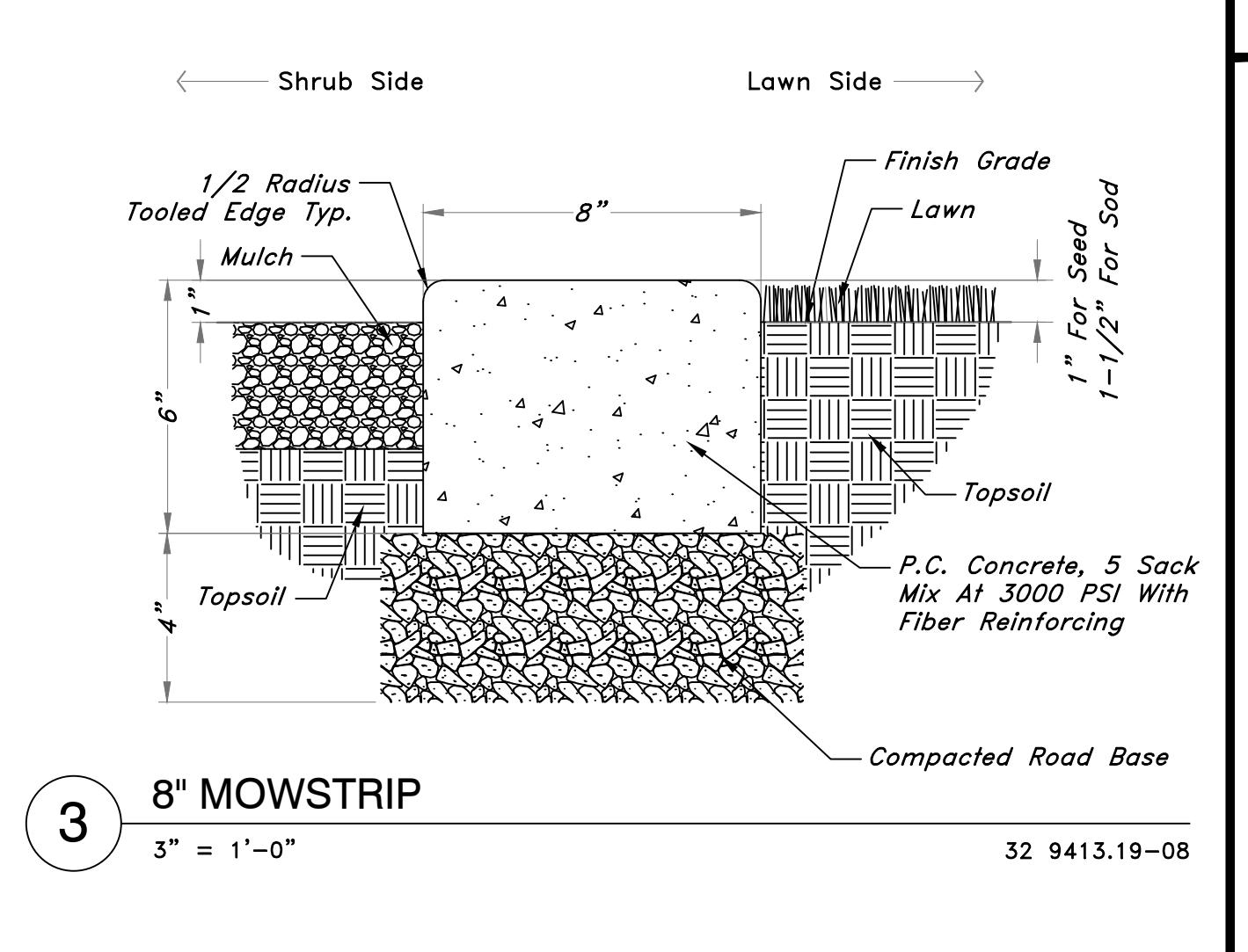
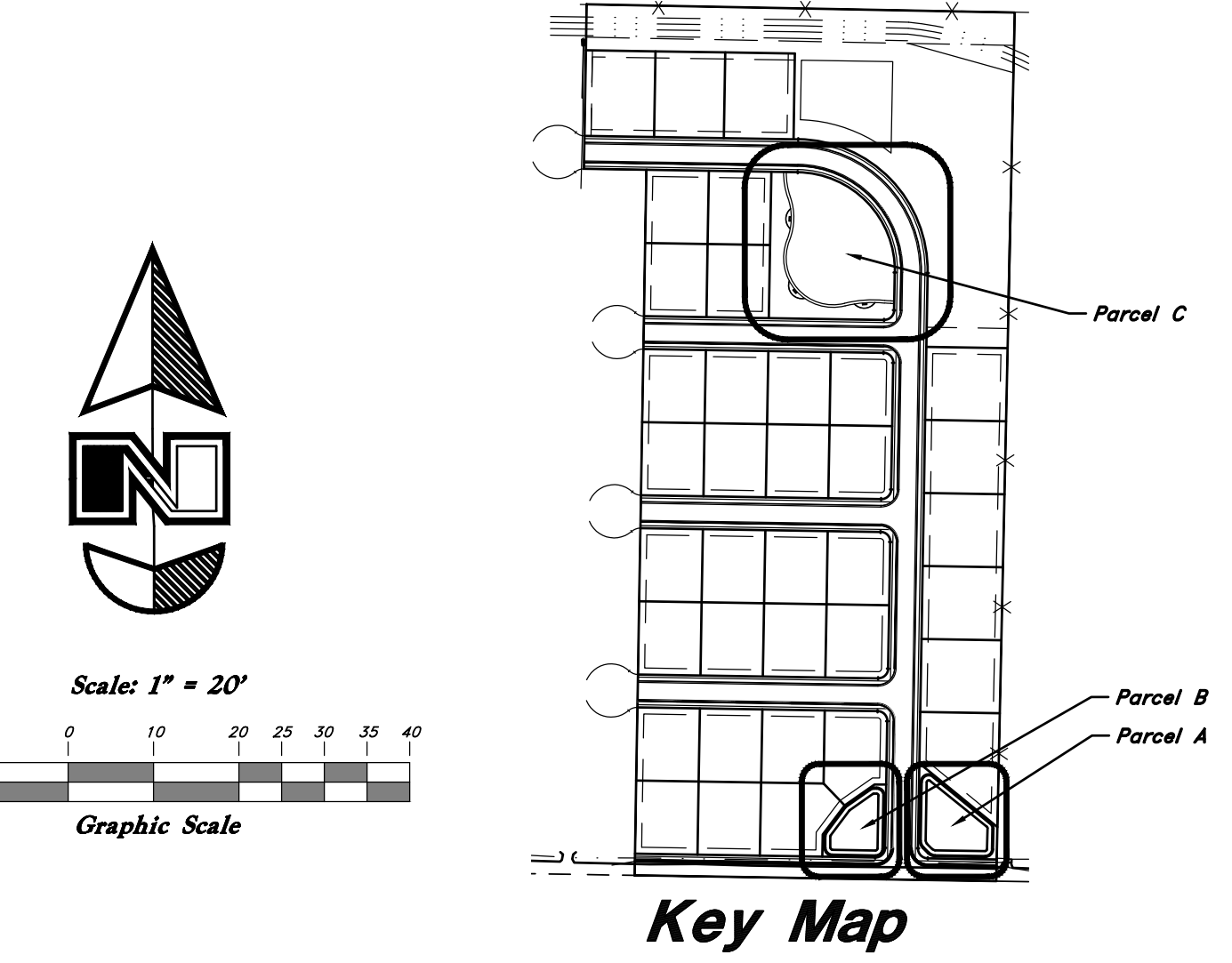
GRASSES	QTY	BOTANICAL NAME / COMMON NAME	SIZE
CAL KAR	9	<i>Calamagrostis x acutiflora</i> 'Karl Foerster' / Feather Reed Grass	1 gal

GROUND COVERS	QTY	BOTANICAL NAME / COMMON NAME	CONT	TYPE
	472 sf	Decorative Gravel Mulch / 1.5"-2" Washed Crushed/Angular Gravel Place 3" Deep Over Dewitt Pro5 Weed Barrier Fabric	Stone Mulch	
	55,081 sf	Dwarf Fescue Sod Plant Over 6" Deep Imported Topsoil - See Specifications	sod	

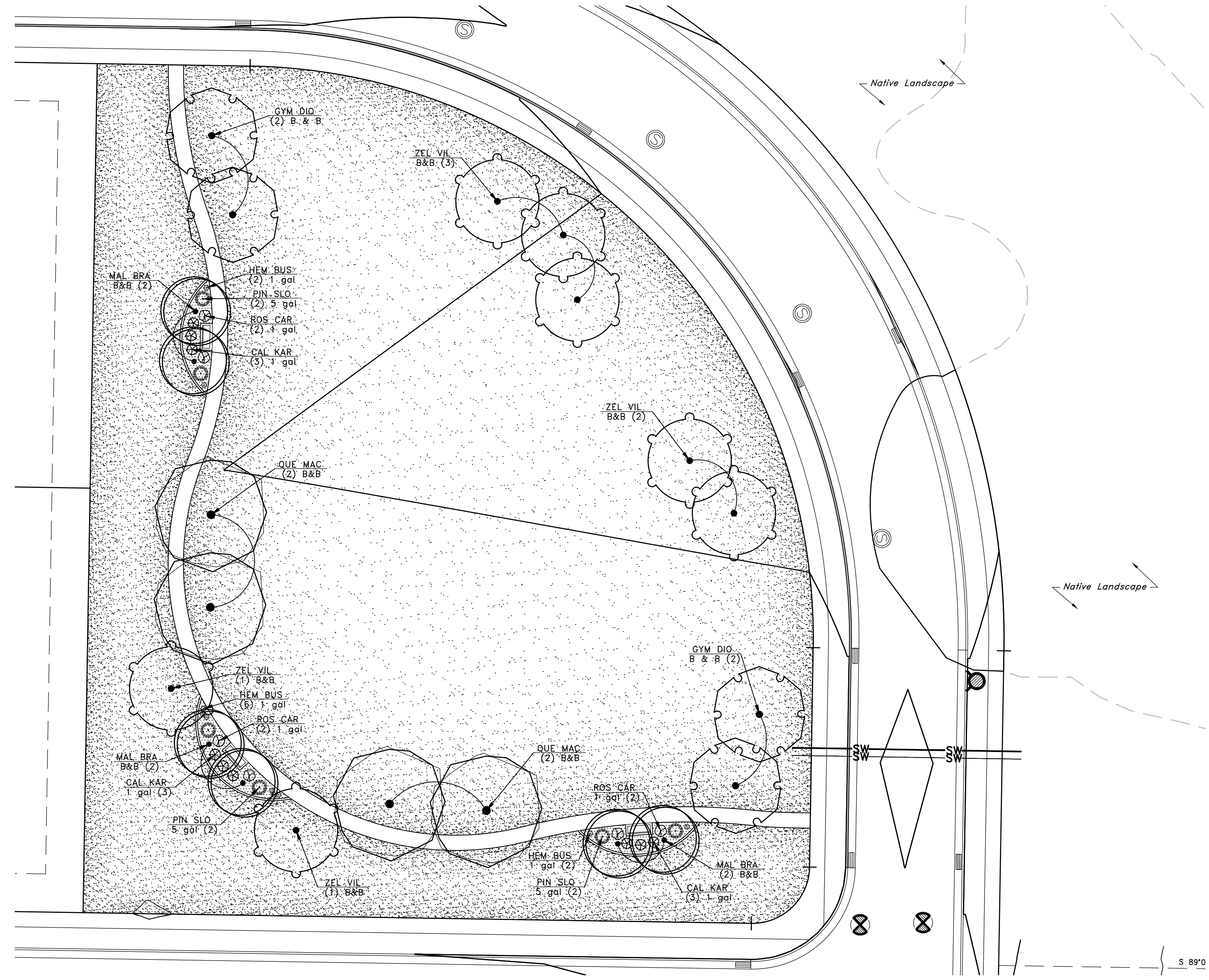


2 TREE PLANTING
NTS 32 9343.01-01

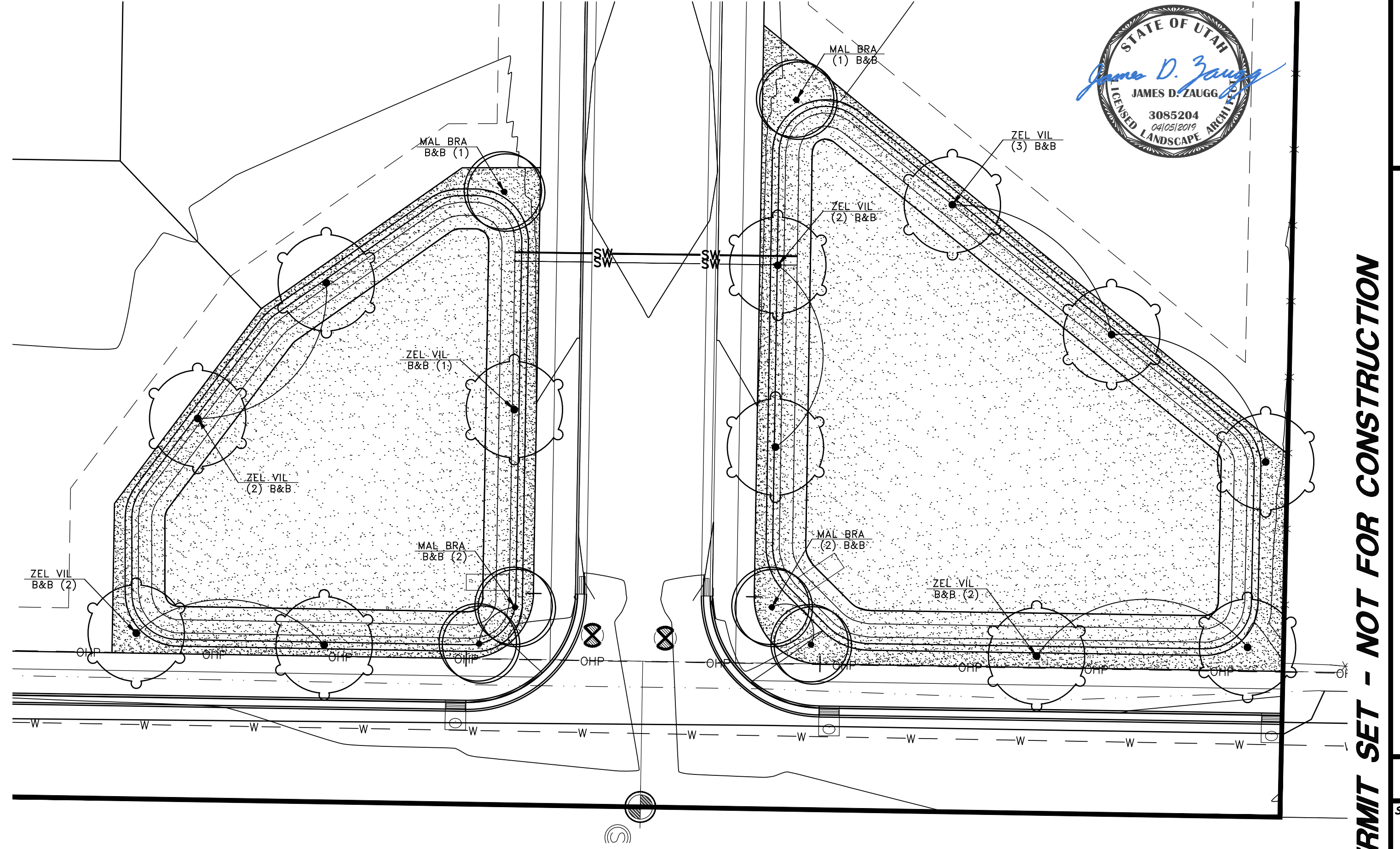
1 SHRUB PLANTING
NTS 32 9333.01-01



3 8" MOWSTRIP
3" = 1'-0" 32 9413.19-08



Parcel 'C'



Parcel 'B'

Parcel 'A'

GREAT BASIN ENGINEERING
 5746 SOUTH 11475 EAST, OGDEN, UTAH 84403
 MAIN (801) 313-4515, SLLC (801) 521-0222, FAX (801) 392-7154
 WWW.GREATBASINENGINEERING.COM

PERMIT SET - NOT FOR CONSTRUCTION

Landscape Plan

Terakee Village No. 1
 Approx. 900 South 4500 West
 Weber County, Utah
 A part of Section 17, T6N, R2W, SLB&M, U.S. Survey

4 Apr, 2019
 SHEET NO.
LP1
 16N719 - AM