

MEMORANDUM

DATE: April 5, 2019

TO: Chad Meyerhoffer, Jared Andersen
Weber County Engineering Office

RE: Wetland Mitigation Areas
Terakee Village PRUD Phase 1

FROM: Brad Blanch
Terakee Properties LP

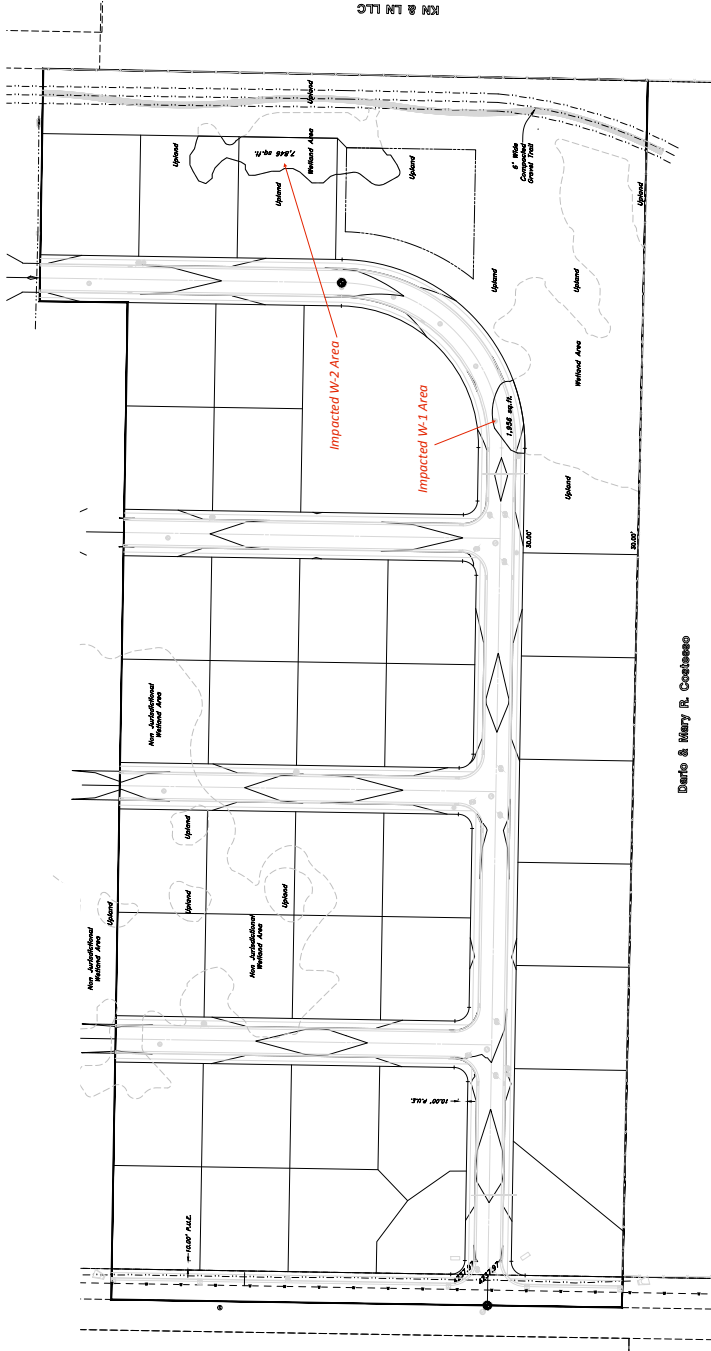
Terakee Properties LP has submitted a Pre-Construction Notification Form with the U.S. Army Corp of Engineering who has jurisdiction over wetland areas. Wetland Resources completed a Wetlands and Waters of the U.S. Delineation Report and submitted it to the U.S. Army Corp of Engineers on September 26, 2017 for a jurisdictional determination for Terakee Village PRUD Phase 1. The U.S. Army Corp of Engineers responded on October 18, 2017:

1. Wetland W-3 (1.95 acres) is an irrigated induced wetland from an elevated leaky ditch that is not regulated under Section 404 of the Clean Water Act.
2. Wetlands W-1 and W2 (1.18 acres) are regulated under Section 404 of the Clean Water Act, since they directly abut or are tributary to a relatively permanent waterway of the Great Salt Lake, the nearest traditional navigable waterway.
3. Ditches D-1, D-2, D-3 and D-4 (3,143 linear feet) are also regulated under Section 404 of the Clean Water Act.
4. Phase 1 of Terakee Village PRUD impacts two jurisdictional wetlands of the U.S. Army Corp of Engineers (*plat attached on the last page of this memorandum for your review*):
 - a) Wetland W-1 has a small impact of 1,956 square feet, or 0.045 acres;
 - b) Wetland W-2 has a small impact of 7,846 square feet, or 0.180 acres;
 - c) Ditches D-1, D-2, and D-3 will not be impacted during Phase 1; and,
 - d) Ditch D-4 will be piped with an 18" pipe just like what is required for other development projects in the area fronting a County Road.
5. The total wetland jurisdictional impact is 9,802 square feet, or 0.225 acres.
6. Terakee Properties will pay into the Machine Lake Mitigation bank to mitigate the impacted jurisdictional as required by the U.S. Army Corp of Engineers.

Copies of the Wetland Resources Wetlands and Waters of the U.S. Delineation Report and the U.S. Army Corp of Engineers response have been provided to your office during the preliminary plan approval process.

Terakee Village[®] No. 1

A PRUD Subdivision
A part of Section 17, T8N, R2W, S18&M, U.S. Survey
Weber County, Utah
April 2018



Dario & Mary R. Costeseo

Total Impacted Area = 9,802 Square Feet (0.225 Acres)

RM & LN LLC

GREAT BASIN ENGINEERING



Wet Area Exhibit
Terakee Village No. 1

Approx. 300 Square Feet West
Weber County, Utah
A part of Section 17, T8N, R2W, S18&M, U.S. Survey



18 Nov. 2018
SHEET NO.
11
180712 - 11

NOT FOR RECORDING

REV	DATE	DESCRIPTION

57.4 SOUTH 1.475 EAST GREEN, UTAH 84403
MAYN (801) 944-9119 S.L.C. (801) 921-0222 FAX (801) 922-7943
W.W. GREAT BASIN ENGINEERING, INC.