

## Phase One Plant Table

**TREES**

Quantity	Symbol	Scientific Name	Common Name	Planting Size
18	⊙	Acer freemanii 'Jeffersred'	Autumn Blaze Maple	2" cal.
25	⊙	Acer platanoides	Norway Maple	2" cal.
3	⊙	Gleditsia tria. iner. 'Shadenaster'	Shadenaster Honeylocust	2" cal.
0	⊙	Morus alba 'Kingan'	Fruitless Mulberry	2" cal.
1	⊙	Pinus nigra	Austrian Pine	6' - 8' B&B
2	⊙	Picea pungens	Colorado Blue Spruce	6' - 8' B&B
1	⊙	Prunus cerasifera 'Thundercloud'	Thundercloud Plum	2" cal.
3	⊙	Prunus serrulata 'Kwanzan'	Kwanzan Cherry	2" cal.
26	⊙	Pyrus calleryana 'Aristocrat'	Aristocrat Flowering Pear	2" cal.

**SHRUBS**

Quantity	Symbol	Scientific Name	Common Name	Planting Size
6	⊙	Pinus mugo 'Pumilio'	Dwarf Mugo Pine	5 gal.
0	⊙	Spiraea japonica 'Magic Carpet'	Magic Carpet Spirea	5 gal.

**PERENNIALS**

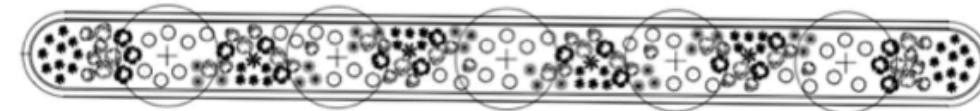
Quantity	Symbol	Scientific Name	Common Name	Planting Size
0	⊙	Calamagrostis 'Karl Foerster'	Karl Foerster Grass	1 gal.
7	⊙	Hemerocallis spp.	Daylily	1 gal.
3	⊙	Lavandula	Lavender	1 gal.

 Decorative Boulders



Entry Concept

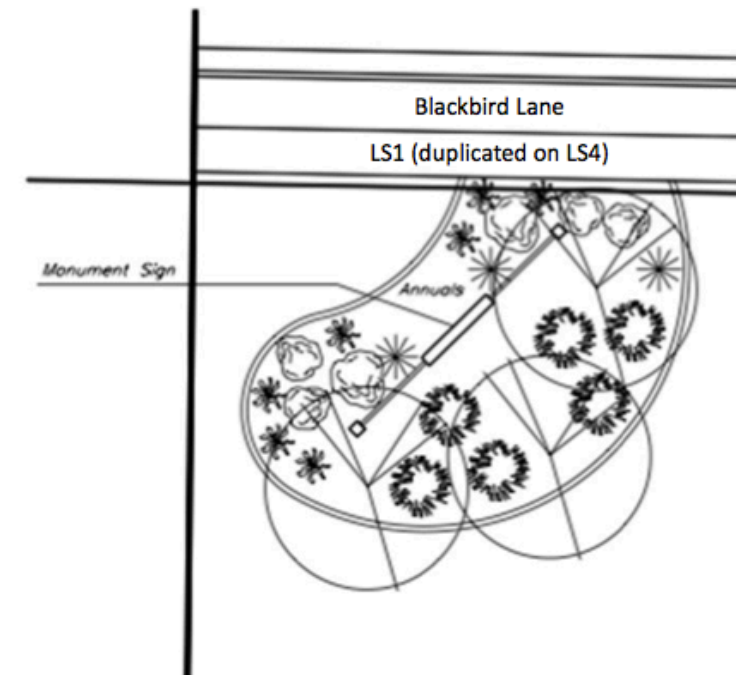
LS5 & LS6  
Between Lots 221 & 222 \*



North & South Sides of Road

\* Phase Two

**Additional Detention Basin Area**  
LS2 (duplicated on LS3)



PRELIMINARY PLAN

1 25 Sept. 2017 County Comments  
REV. DATE: 10/20/17

GREAT BASIN ENGINEERING

5744 S. DUTCH 1475 EAST BLDG. UTAH 84403  
 MAIN (801)394-4515 B.L.G. (801)521-0222 FAX (801)392-7544  
 WWW.GRETBASINENGINEERING.COM

Landscape Plan

Terakee Village® PRUD Subdivision

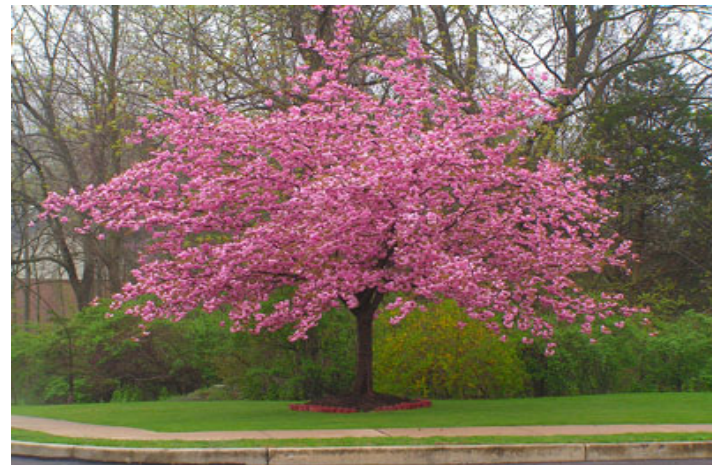
Weber County, Utah  
 A part of Section 17, T8N, R2W, S18N, U.S. Survey

22 Sept, 2017

SHEET NO.

181718 - Prelim-4





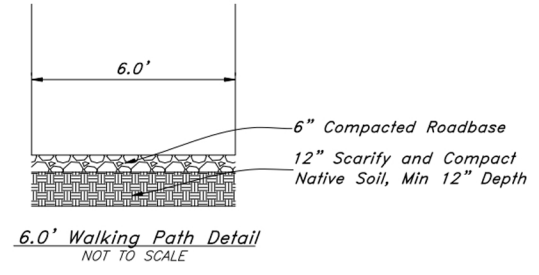
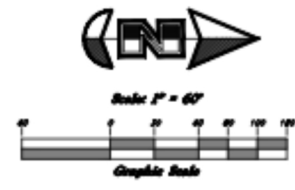
## Depiction of Proposed Trees, Shrubs & Perennials

## Terakee Village PRUD



# Preliminary Plan For Terakee Village®

A PRUD Subdivision  
A part of the Southeast Quarter of Section 17, T6N, R2W, SLB&M, U.S. Survey  
Weber County, Utah  
September 2017



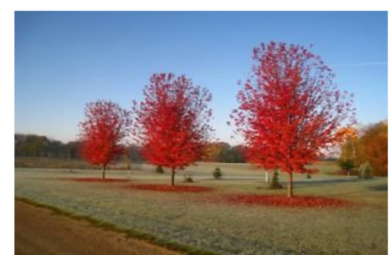
## Decorative Street Tree & Lighting Design



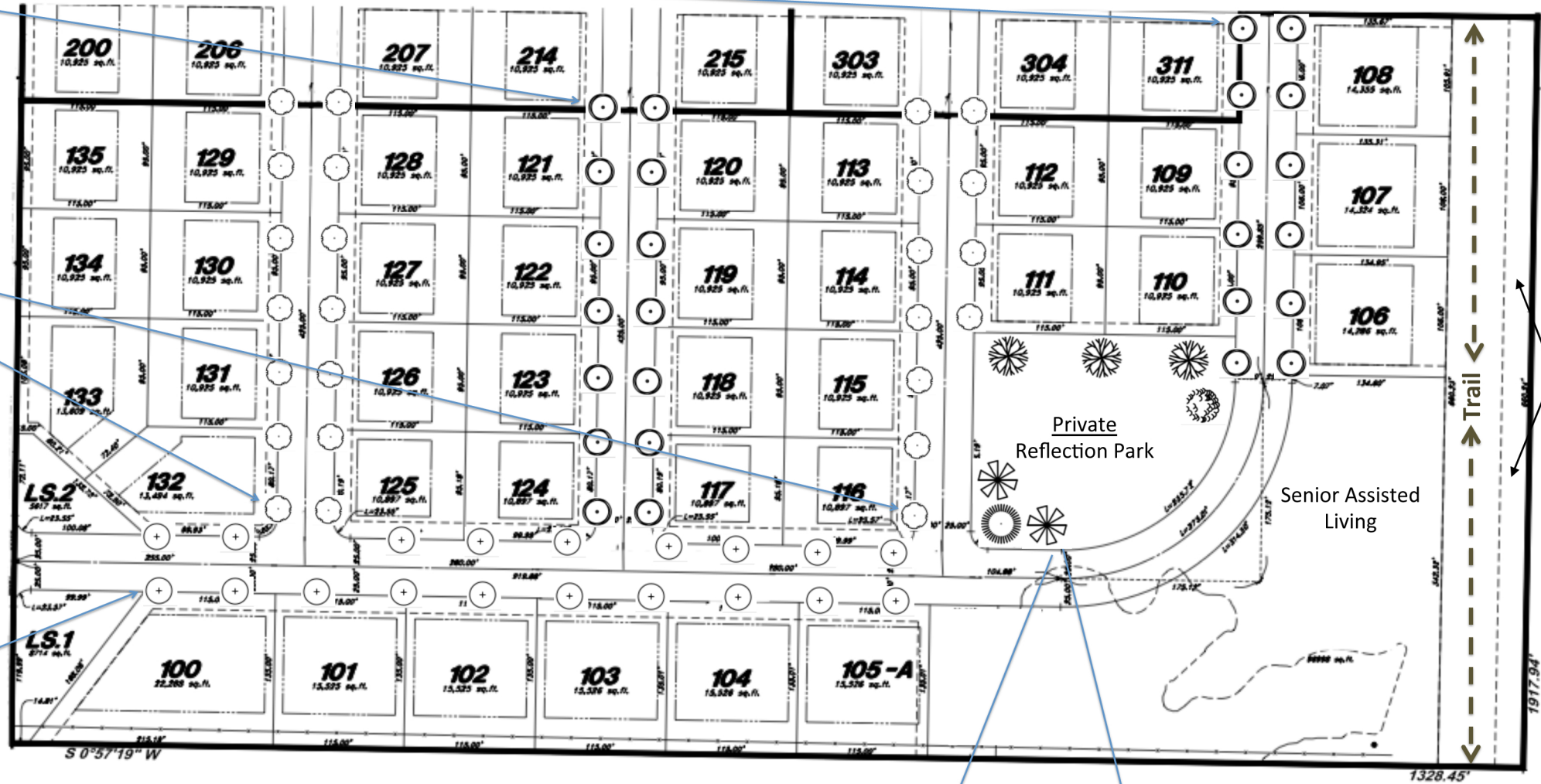
Flowering Pear



Norway Maple



Autumn Blaze Maple



Decorative street trees will be planted by developer outside of private right of way; minimum 2 feet from approved building lot front property line.



Decorative Light

Entry lighting depicted on Entry Concept

PRELIMINARY PLAN

**GREAT BASIN ENGINEERING**  
9746 SOUTH 1475 EAST OGDEN, UTAH 84403  
MAIN (801) 392-7544 FAX (801) 392-7544  
WWW.GREATBASINENGINEERING.COM

**Landscape Plan**  
Terakee Village® PRUD Subdivision  
Weber County, Utah  
A part of Section 17, T6N, R2W, SLB&M, U.S. Survey

22 Sept, 2017

SHEET NO.

180718 - Prelim-1