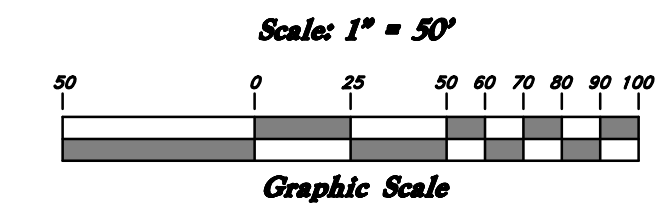
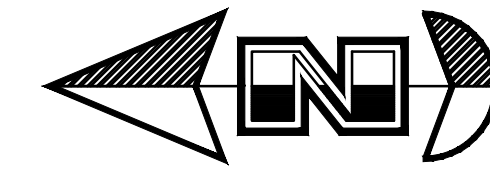


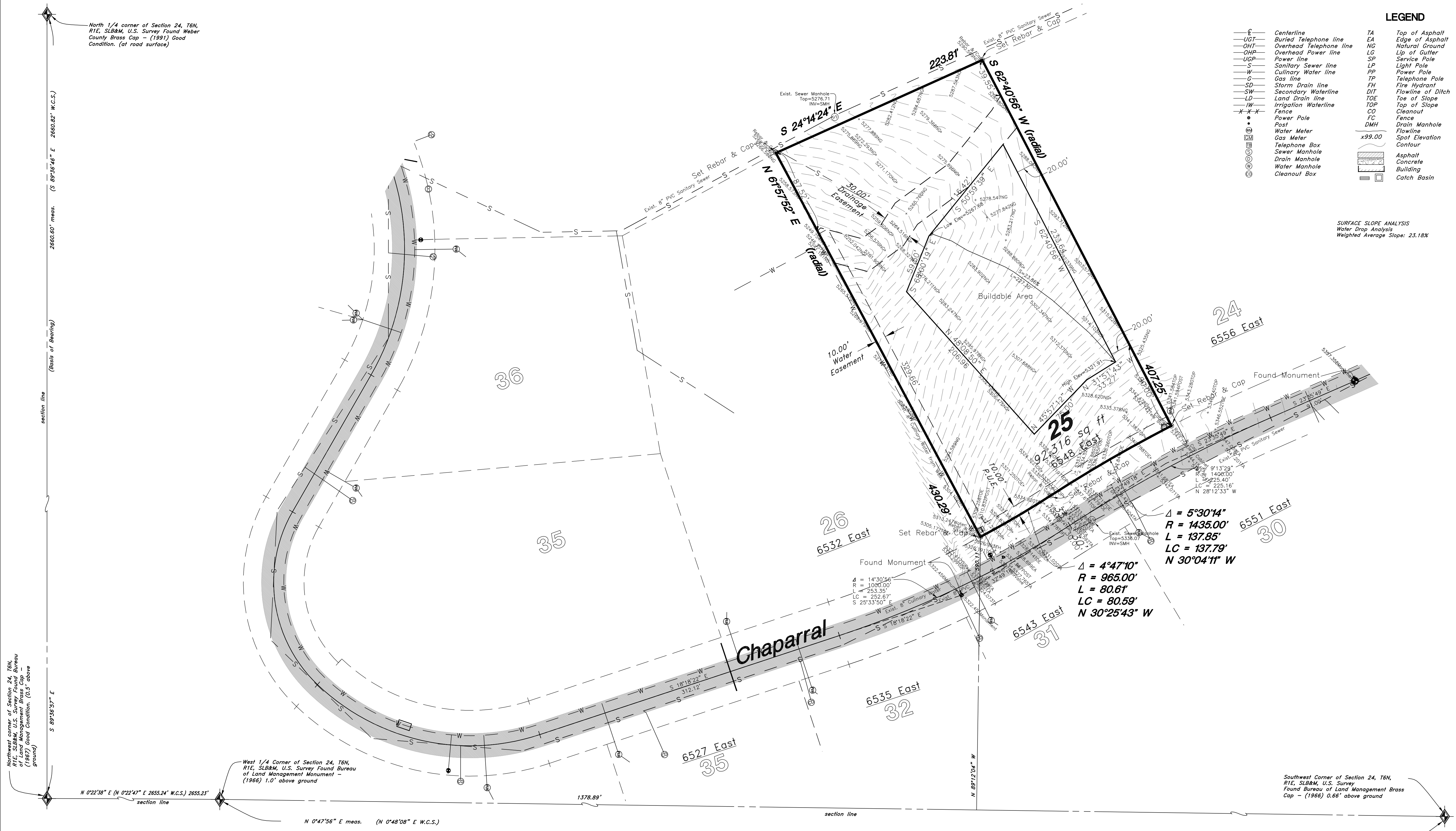
The Legends AT Hawkins Creek 2nd Amendment Lot 25



LEGEND

—E—	Centerline	TA	Top of Asphalt	C.M.P.	Corrugated Metal Pipe
—UGT—	Buried Telephone line	EA	Edge of Asphalt	R.C.P.	Reinforced Concrete Pipe
—OHT—	Overhead Telephone line	NG	Natural Ground	CONC	Edge of Concrete
—OHP—	Overhead Power line	LG	Lip of Gutter	RWALL	Retaining Wall
—UGP—	Underground Power line	SP	Service Pole	SMH	Sewer Manhole
—S—	Sanitary Sewer line	LP	Light Pole	WV	Water Valve
—W—	Water line	PP	Power Pole	CB	Catch Basin
—C—	Culinary Water line	TP	Telephone Pole	DV	Diversion Box
—SD—	Storm Drain line	FH	Fire Hydrant	TC	Top of Curb
—SW—	Secondary Waterline	DIT	Flowline of Ditch	SW	Sidewalk
—LD—	Land Drain line	TOS	Top of Slope	GAS	Gas line Marker
—IW—	Irrigation Waterline	TOP	Top of Slope	GUY	Guy Wire
—X—X—	Fence	CO	Cleanout	BLDG	Building Corner
●	Power Pole	FC	Fence	NG	Natural Ground
○	Water Meter	DMH	Drain Manhole	○	Fire Hydrant
○	Gas Meter	FC	Fence	○	Water Valve
○	Telephone Box	FC	Fence	○	Light Pole
○	Sewer Manhole	FC	Fence	○	Power Pole w/guy
○	Drain Manhole	FC	Fence	○	Deciduous Tree
○	Water Manhole	FC	Fence	○	Coniferous Tree
○	Cleanout Box	FC	Fence		

SURFACE SLOPE ANALYSIS
Water Drop Analysis
Weighted Average Slope: 23.18%



Narrative:
At the request of Keith Smith, owner and developer of The Legends @ Hawkins Creek, we have prepared this subdivision plat.
The basis of bearing for this plat is S 89°36'57" E between the Brass Caps found at the Northwest corner and the North 1/4 corner of Section 24, Township 6 North, Range 1 East, Salt Lake Base & Meridian, U.S. Survey.

GREAT BASIN ENGINEERING

5746 SOUTH 1475 EAST OGDEN, UTAH 84403
 MAIN (801) 394-4515 S.L.C. (801) 521-0222 FAX (801) 392-7544
 WWW.GREATBASINENGINEERING.COM

Topography Survey
Hawkins Creek Lot 25
 6548 East Chaparral
 Weber County, Utah
 A part of Section 24, T6N, R1E, SLB&M, U.S. Survey

26 Mar, 2012
 SHEET NO.
C1
 12N210 LOT 25