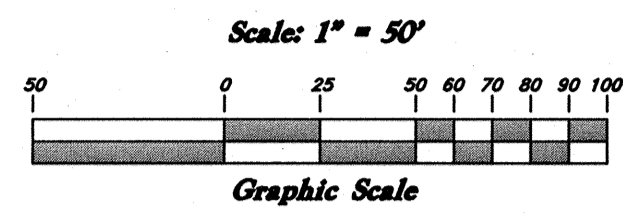
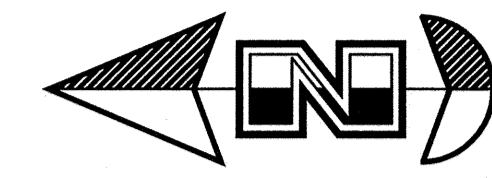
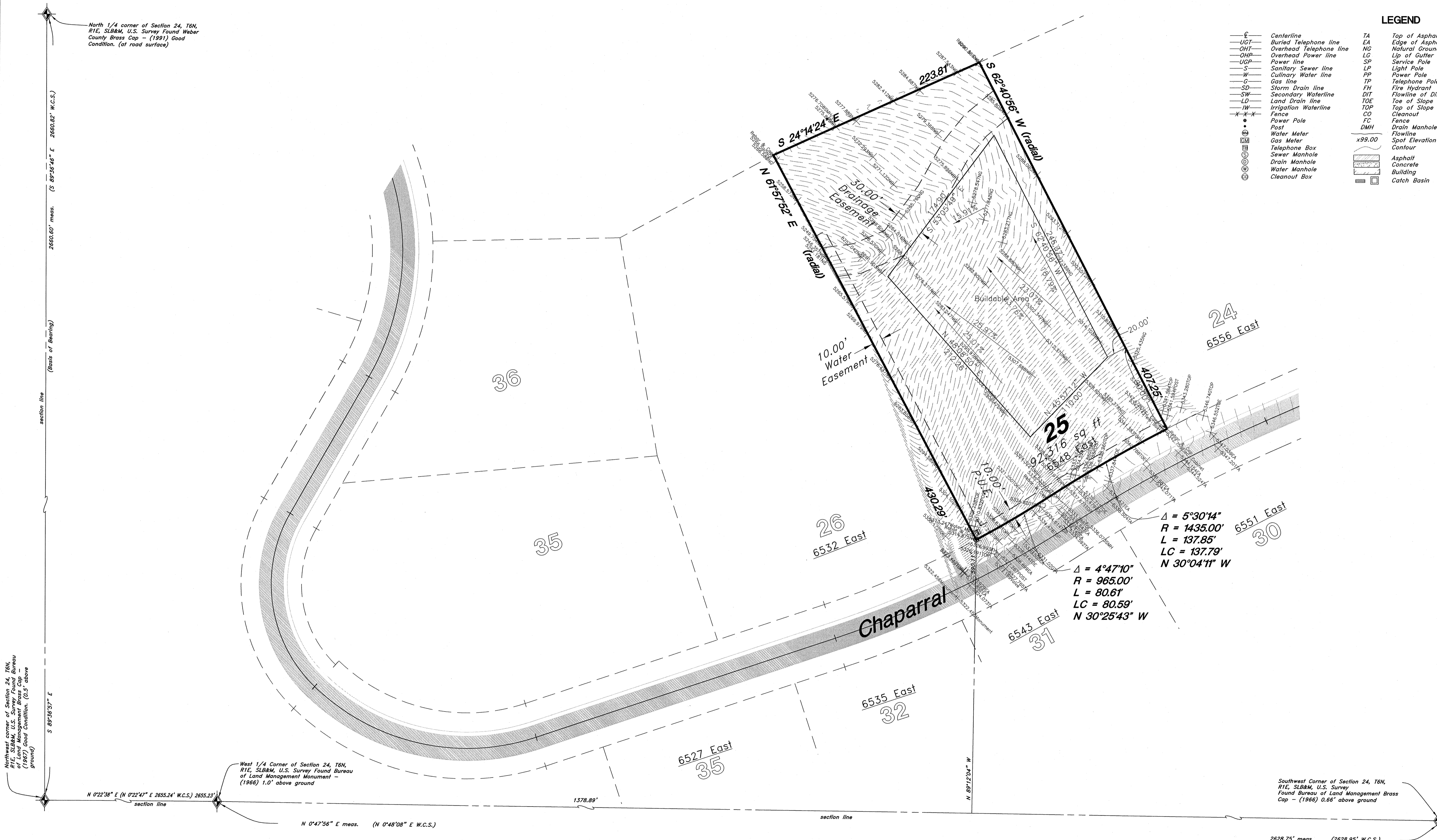


# The Legends @ Hawkins Creek 2nd Amendment Lot 25



### LEGEND

—E—	Centerline	TA	Top of Asphalt	C.M.P.	Corrugated Metal Pipe
-UGT-	Buried Telephone line	EA	Edge of Asphalt	R.C.P.	Reinforced Concrete Pipe
-OHT-	Overhead Telephone line	NG	Natural Ground	CONC	Edge of Concrete
-OHP-	Overhead Power line	LG	Lip of Gutter	RWALL	Retaining Wall
-P-	Power line	SP	Service Pole	SMH	Sewer Manhole
-S-	Sanitary Sewer line	LP	Light Pole	WV	Water Valve
-W-	Culinary Water line	PP	Power Pole	CB	Catch Basin
-G-	Gas line	TP	Telephone Pole	DV	Diversion Box
-SD-	Storm Drain line	FH	Fire Hydrant	TC	Top of Curb
-SW-	Secondary Waterline	DIT	Flowline of Ditch	SW	Sidewalk
-LD-	Land Drain line	TOE	Toe of Slope	GAS	Gas line Marker
-W-	Irrigation Waterline	TOP	Top of Slope	GW	Guy Wire
-X-X-X-	Fence	CO	Cleanout	BLDG	Building Corner
•	Power Pole	FC	Fence	NG	Natural Ground
•	Post	DMH	Drain Manhole	FW	Flowline
•	Water Meter	•	Water Meter	•	Power Pole w/guy
•	Gas Meter	•	Gas Meter	•	Deciduous Tree
•	Telephone Box	•	Telephone Box	•	Coniferous Tree
•	Sewer Manhole	•	Sewer Manhole	•	
•	Drain Manhole	•	Drain Manhole	•	
•	Water Manhole	•	Water Manhole	•	
•	Cleanout Box	•	Cleanout Box	•	
x99.00	Spot Elevation	•	Spot Elevation	•	
—	Contour	•	Contour	•	
▨	Asphalt	▨	Asphalt	▨	
▩	Concrete	▩	Concrete	▩	
▧	Building	▧	Building	▧	
▦	Catch Basin	▦	Catch Basin	▦	



**Narrative:**  
At the request of Keith Smith, owner and developer of The Legends @ Hawkins Creek, we have prepared this subdivision plat.  
The basis of bearing for this plat is S 89°38'57" E between the Brass Caps found at the Northwest corner and the North 1/4 corner of Section 24, Township 6 North, Range 1 East, Salt Lake Base & Meridian, U.S. Survey.

**GREAT BASIN ENGINEERING**

5746 SOUTH 1475 EAST, DEDEN, UTAH 84403  
 MAIN (801) 394-4515, SALC (801) 521-0222, FAX (801) 392-7544  
 WWW.GREATBASINENGINEERING.COM

**Topography Survey**

**Hawkins Creek Lot 25**

6548 East Chaparral  
 Weber County, Utah  
 A part of Section 24, T6N, R1E, SLB&M, U.S. Survey

26 Mar, 2012

SHEET NO.

**C1**

04N228LOT25