

Dwg. No.:	
Date:	4/27/12
Issued For:	INTERNAL REVIEW
Checked:	BS/OL
Drawn:	B SUMSON

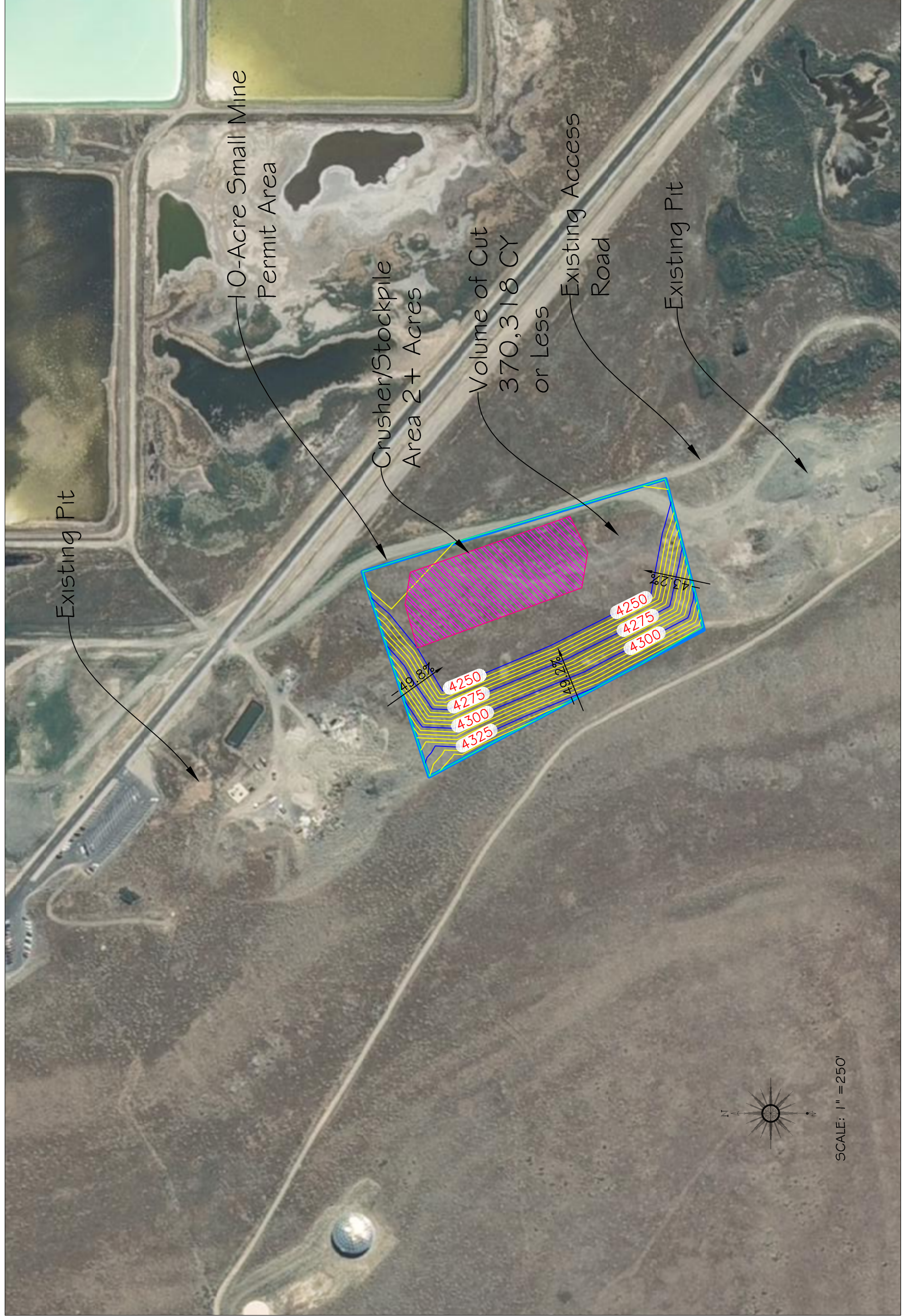
Revision:	00
Final Buildout Contours	
Engineer:	

NO.	DATE:	DESCRIPTION:	BY:

Western Zirconium Granular Borrow Pit
 S.18, T.6 N., R.3W., 5LB#M



W.W. Clyde & Co.
 P.O. Box 1955
 Orem, Utah 84059
 801-802-6900



SCALE: 1" = 250'