

VILLAGE NESTS EAST AT POWDER MOUNTAIN-PRUD

VACATING AND REPLACING VILLAGE NESTS AT POWDER MOUNTAIN CONDOMINIUMS

NORTHWEST CORNER SECTION 6, TOWNSHIP 7 NORTH, RANGE 2 EAST SALT LAKE BASE AND MERIDIAN FOUND GLO 1944, 4" BRASS CAP, GOOD CONDITION

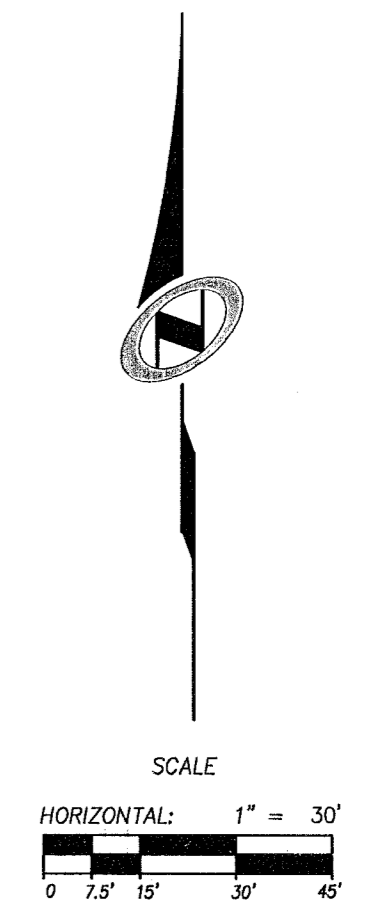
BASIS OF BEARINGS
N 87°55'51" W 1381.07'
(N 87°56'05" W 1380.98' RECORD STATE PLANE GRID PER WEBER COUNTY SURVEY OFFICE)

FOUND WEBER COUNTY LINE MONUMENT PER WEBER COUNTY SURVEYOR 2013, GOOD CONDITION

LOCATED IN THE NORTHEAST QUARTER OF SECTION 8, TOWNSHIP 7 NORTH, RANGE 2 EAST, SALT LAKE BASE AND MERIDIAN JULY 2017

NORTH QUARTER CORNER SECTION 8, TOWNSHIP 7 NORTH, RANGE 2 EAST SALT LAKE BASE AND MERIDIAN FOUND 1944 GLO BRASS CAP, GOOD CONDITION

NORTHEAST CORNER SECTION 8, TOWNSHIP 7 NORTH, RANGE 2 EAST SALT LAKE BASE AND MERIDIAN (CALCULATED)



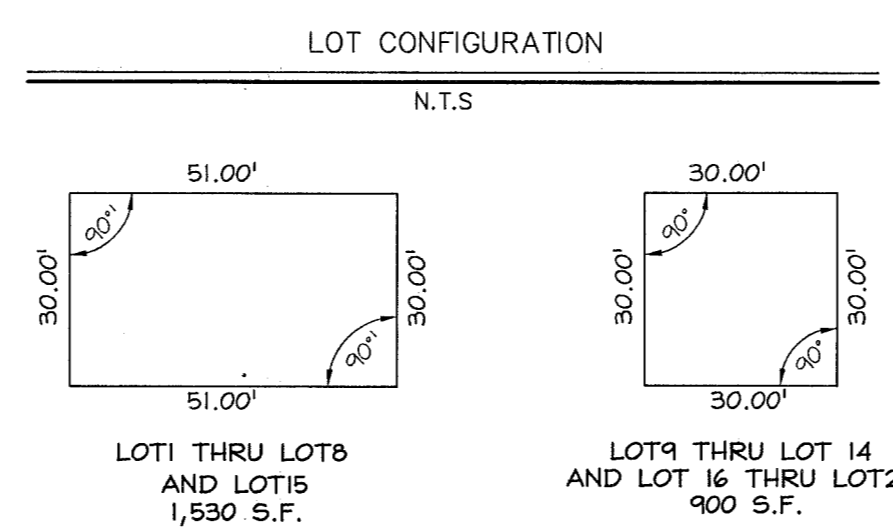
LINE	LENGTH	DIRECTION
L1	90.76'	N 69°17'18" E
L2	36.00'	N 20°42'42" W
L3	73.73'	N 69°17'18" E
L4	88.52'	N 81°20'08" E
L5	36.00'	S 8°34'52" E
L6	53.57'	N 81°20'08" E
L7	69.47'	N 81°23'26" E
L8	36.00'	S 8°36'34" E
L9	55.32'	N 81°23'26" E
L10	59.71'	N 87°05'20" E
L11	36.00'	S 2°54'40" E
L12	56.22'	N 87°05'20" E
L13	59.86'	N 90°00'00" E
L14	36.00'	N 0°00'00" E
L15	56.26'	N 90°00'00" E
L16	64.71'	N 90°00'00" E
L17	36.00'	S 0°00'00" E
L18	56.40'	N 90°00'00" E
L19	70.66'	N 90°00'00" E
L20	36.00'	N 0°00'00" E

LINE	LENGTH	DIRECTION
L21	56.50'	N 90°00'00" E
L22	75.45'	N 90°00'00" E
L23	36.00'	N 0°00'00" E
L24	55.29'	N 90°00'00" E
L25	93.09'	N 90°00'00" E
L26	44.85'	N 74°59'58" W
L27	36.00'	N 15°00'02" E
L28	46.88'	S 74°59'58" E
L29	52.21'	N 80°00'00" W
L30	36.00'	N 10°00'00" E
L31	46.33'	S 80°00'00" E
L32	57.83'	N 85°00'00" W
L33	36.00'	N 5°00'00" E
L34	51.32'	S 85°00'00" E
L35	48.48'	N 89°59'57" W
L36	36.00'	N 0°00'03" E
L37	45.16'	S 89°59'57" E
L38	59.16'	N 89°59'57" W
L39	36.00'	N 0°00'03" E
L40	55.84'	S 89°59'57" E

LINE	LENGTH	DIRECTION
L41	47.39'	S 88°50'21" W
L42	36.00'	N 1°09'39" W
L43	44.81'	N 88°50'21" E
L44	59.49'	N 90°00'00" W
L45	36.00'	N 0°00'00" W
L46	56.18'	N 90°00'00" E
L47	54.00'	N 86°00'09" W
L48	36.00'	N 3°59'51" E
L49	47.57'	S 86°00'09" E
L50	83.15'	S 80°44'35" W
L51	36.00'	N 9°15'25" W
L52	53.51'	N 80°44'35" E
L53	79.08'	S 83°03'27" W
L54	36.00'	N 6°56'33" W
L55	46.92'	N 83°03'27" E
L56	83.35'	S 75°26'01" W
L57	36.00'	N 14°33'59" W
L58	56.77'	N 75°26'01" E

UNIT	ADDRESS
1	5804 N DAYBREAK RIDGE
2	5792 N DAYBREAK RIDGE
3	5784 N DAYBREAK RIDGE
4	5778 N DAYBREAK RIDGE
5	5772 N DAYBREAK RIDGE
6	5760 N DAYBREAK RIDGE
7	5754 N DAYBREAK RIDGE
8	5747 N DAYBREAK RIDGE
9	5734 N DAYBREAK RIDGE
10	5756 N DAYBREAK RIDGE
11	5748 N DAYBREAK RIDGE
12	5762 N DAYBREAK RIDGE
13	5766 N DAYBREAK RIDGE
14	5742 N DAYBREAK RIDGE
15	5774 N DAYBREAK RIDGE
16	5780 N DAYBREAK RIDGE
17	5786 N DAYBREAK RIDGE
18	5790 N DAYBREAK RIDGE
19	5798 N DAYBREAK RIDGE
20	5802 N DAYBREAK RIDGE

CURVE	LENGTH	RADIUS	DELTA	CHORD LENGTH	CHORD BEARING
C1	14.59'	118.00'	7°05'03"	14.58'	S50° 18' 27"E
C2	14.97'	118.00'	7°16'02"	14.96'	S43° 07' 55"E
C3	38.86'	118.00'	18°52'00"	38.68'	S30° 03' 53"E
C4	10.53'	118.00'	5°06'38"	10.52'	S18° 04' 34"E
C5	20.20'	118.00'	9°48'31"	20.18'	S10° 37' 00"E
C6	20.56'	307.00'	3°50'15"	20.56'	S7° 37' 52"E
C7	36.97'	307.00'	6°53'59"	36.95'	S12° 59' 59"E
C8	7.55'	307.00'	1°24'30"	7.55'	S17° 09' 13"E
C9	38.71'	307.00'	7°13'28"	38.68'	S21° 28' 13"E
C10	8.01'	307.00'	1°29'40"	8.01'	S25° 49' 47"E
C11	18.43'	307.00'	3°26'25"	18.43'	S28° 17' 49"E



SMHG PHASE I, LLC.
3632 N. WOLF CREEK DR.
EDEN, UT, 84310

LEGEND

- BOUNDARY LINE
- LOT LINE
- SECTION LINE
- QUARTER SECTION LINE
- ADJOINER DEED LINES
- CALCULATED SECTION CORNER AS NOTED
- SECTION CORNER AS NOTED
- STREET MONUMENT
- SET REBAR WITH PLASTIC CAP STAMPED "NOLTE ASSOC."
- PRIVATE LOT
- LIMITED COMMON AREA
- COMMON AREA
- PRUD LOT NUMBER

PLAN REVIEW ACCEPTANCE
FOR COMPLIANCE WITH THE APPLICABLE CONSTRUCTION CODES IDENTIFIED BELOW.

BUILDING STRUCTURAL
 MECHANICAL PLUMBING
 ELECTRICAL ENERGY
 ACCESSIBILITY FIRE

PLAN REVIEW ACCEPTANCE OF DOCUMENTS DOES NOT AUTHORIZE CONSTRUCTION TO PROCEED IN VIOLATION OF ANY FEDERAL, STATE, OR LOCAL REGULATIONS.

MEM DATE: 07/19/18
WEST COAST CODE CONSULTANTS, INC.

Sheet 2 of 2

5217 SOUTH STATE STREET
SUITE 200
MURRAY, UT 84107
801.743.1300

RECORDED #
STATE OF UTAH, COUNTY OF WEBER, RECORDED AND FILED AT THE REQUEST OF: SMHG PH I LLC
ENTRY NO: 2871394
DATE: 08-15-17 TIME: 12:03
BOOK: 81 PAGE: 68, 69
FEE \$ 81

LEANN H. KILTS
WEBER COUNTY RECORDER

