

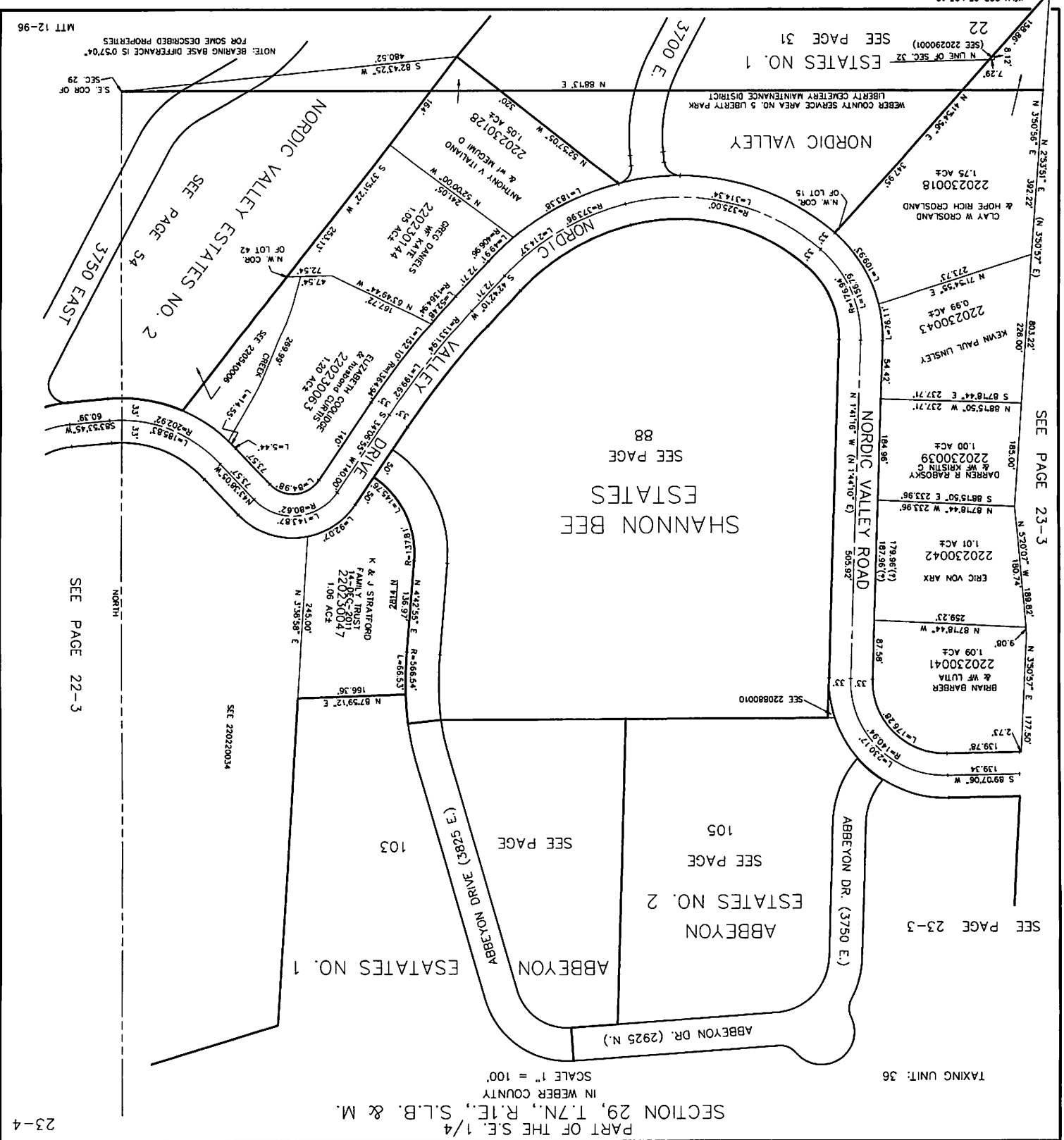
* Required setbacks:
North ← Side yard = 20'
Rear yard = 10'

PART OF THE S.E. 1/4 SECTION 29, T.7N., R.1E., S.L.B. & M. IN WEBER COUNTY

SCALE 1" = 100'

TAXING UNIT: 36

23-4



NOTE: BEARING BASE DIFFERENCE IS 0.704° FOR SOME DESCRIBED PROPERTIES

SEE PAGE 22-3

SEE PAGE 54

SEE PAGE 88

SEE PAGE 23-3

SEE PAGE 23-3

SEE PAGE 103

SEE PAGE 105

SEE PAGE 22-3

NORTH

SEE 220220034

SEE 220860010

MTT 12-96

WLY COR OF LOT 12

ESTATES NO. 1 SEE PAGE 31

WEBER COUNTY SERVICE AREA NO. 5 LIBERTY PARK LIBERTY CEMETERY MAINTENANCE DISTRICT

NORDIC VALLEY

CLAY W GROSBLAND & HOPE RICH GROSBLAND 220230018 1.75 ACF

KEVIN PAUL LINSLEY 220230043 0.99 ACF

DARREN R BAROSKY & WIFE KRISTIN C 220230039 1.00 ACF

ERIC VON ARX 220230042 1.01 ACF

BRIAN BARBER & WIFE LUTIA 220230041 1.09 ACF

ANTHONY V ITALIANO & WIFE MEGAN O 220230128 1.05 ACF

ELIZABETH COOPER & HUSBAND CLIFFORD 220230063 1.20 ACF

K & J STRATFORD FAMILY TRUST 220230047 1.06 ACF

ESATATES NO. 1

ABBAYON ESTATES NO. 2

ABBAYON

ABBAYON DR. (2925 N.)

ABBAYON DR. (3750 E.)

NORDIC VALLEY ESTATES NO. 2

3750 EAST

3700 E.

NORDIC VALLEY ROAD

VALLEY DRIVE

ABBAYON DRIVE (3750 E.)

NORTH

SEE PAGE 29

MTT 12-96