

HIDDEN COVE SUBDIVISION

2125 EAST 6260 SOUTH
WEBER COUNTY, UTAH
CURRENT ZONE: RE-15

VICINITY MAP



GENERAL NOTES

- 1) ALL WORK WITHIN THE WEBER COUNTY RIGHT OF WAY SHALL CONFORM TO THE WEBER COUNTY STANDARDS & SPECIFICATIONS.
- 2) ALL WORK PERFORMED ON WEBER COUNTY OWNED UTILITIES & CONNECTIONS THERE TO SHALL CONFORM TO THE WEBER COUNTY STANDARDS & SPECIFICATIONS.
- 3) CONTRACTOR SHALL OBTAIN AND REVIEW A COPY OF ALL OF THE ABOVE MENTIONED STANDARDS AND SPECIFICATIONS.
- 4) THESE PLANS CALL FOR BUT ARE NOT DESIGN DRAWINGS FOR THE RELOCATION, AND/OR REMOVAL OF EXISTING DRY UTILITIES INFRASTRUCTURE. DESIGN DRAWINGS FOR SAID RELOCATIONS AND REMOVALS SHALL BE BY OTHERS.
- 5) CALL BLUE STAKES 48 HOURS PRIOR TO DIGGING.
- 6) CONTRACTOR SHALL FIELD VERIFY LOCATIONS OF ALL EXISTING MANHOLES AND OTHER UTILITIES BEFORE BUILDING OR STAKING ANY UTILITY LINES.
- 7) BENCHMARK IS: SOUTHWEST QUARTER CORNER OF SECTION 23, TOWNSHIP 5 NORTH, RANGE 1 WEST, SALT LAKE BASE AND MERIDIAN - 4583.22. LOCAL BENCHMARK SSMH ELEV. 4830.86.

DEVELOPER

DONALD FULTON

BOX 65999
SALT LAKE CITY, UT 84165
TEL: 385-242-4277

ENGINEER / SURVEYOR

PINNACLE

Engineering & Land Surveying, Inc.

327 WEST GORDON AVE. #3
LAYTON, UT 84041

Phone: (801) 773-1910
Fax: (801) 719-6738

UTILITY DISCLAIMER

THE CONTRACTOR IS SPECIFICALLY CAUTIONED THAT THE LOCATION AND / OR ELEVATIONS OF EXISTING UTILITIES AS SHOWN ON THESE PLANS IS BASED ON RECORDS OF THE VARIOUS UTILITY COMPANIES AND WHERE POSSIBLE, MEASUREMENTS TAKEN IN THE FIELD. THE INFORMATION IS NOT TO BE RELIED ON AS BEING EXACT OR COMPLETE. THE CONTRACTOR MUST CALL THE LOCAL UTILITY LOCATION CENTER AT LEAST 48 HOURS BEFORE ANY EXCAVATION TO REQUEST EXACT FIELD LOCATIONS OF UTILITIES. IT SHALL BE THE RESPONSIBILITY OF THE CONTRACTOR TO RELOCATE ALL EXISTING UTILITIES WHICH CONFLICT WITH THE PROPOSED IMPROVEMENTS SHOWN ON THE PLANS.

NOTICE TO CONTRACTOR

ALL CONTRACTORS AND SUBCONTRACTORS PERFORMING WORK SHOWN ON OR RELATED TO THESE PLANS SHALL CONDUCT THEIR OPERATIONS SO THAT ALL EMPLOYEES ARE PROVIDED A SAFE PLACE TO WORK AND THE PUBLIC IS PROTECTED. ALL CONTRACTORS AND SUBCONTRACTORS SHALL COMPLY WITH THE "OCCUPATIONAL SAFETY AND HEALTH REGULATIONS" OF THE U.S. DEPARTMENT OF LABOR AND THE STATE OF UTAH DEPARTMENT OF INDUSTRIAL RELATIONS CONSTRUCTION SAFETY ORDERS. THE CIVIL ENGINEER SHALL NOT BE RESPONSIBLE IN ANY WAY FOR THE CONTRACTORS AND SUBCONTRACTORS COMPLIANCE WITH SAID REGULATIONS AND ORDERS.

CONTRACTOR FURTHER AGREES THAT HE SHALL ASSUME SOLE AND COMPLETE RESPONSIBILITY FOR JOB-SITE CONDITIONS DURING THE COURSE OF CONSTRUCTION OF THIS PROJECT, INCLUDING SAFETY OF ALL PERSONS AND PROPERTY. THAT THIS REQUIREMENT SHALL APPLY CONTINUOUSLY AND NOT BE LIMITED TO NORMAL WORKING HOURS, AND THAT THE CONTRACTOR SHALL DEFEND, INDEMNIFY, AND HOLD THE OWNER AND THE CIVIL ENGINEER HARMLESS FROM ANY AND ALL LIABILITY, REAL OR ALLEGED, IN CONNECTION WITH THE PERFORMANCE OF WORK ON THIS PROJECT, EXCEPTING FOR LIABILITY ARISING FROM THE SOLE NEGLIGENCE OF THE OWNER OR ENGINEER.

TRAFFIC CONTROL & SAFETY NOTES

TRAFFIC CONTROL PLAN FOR WORK WITHIN WEBER COUNTY RIGHT OF WAY MUST MEET WEBER COUNTY STANDARDS & SPECIFICATIONS. BARRECASTING AND DETOURING SHALL BE IN CONFORMANCE WITH THE REQUIREMENTS OF THE CURRENT STATE OF UTAH DEPARTMENT OF TRANSPORTATION MANUAL OF TRAFFIC CONTROLS FOR CONSTRUCTION AND MAINTENANCE WORK ZONES, AND THE CURRENT WEBER COUNTY STANDARD DRAWING, AND SHALL BE APPROVED BY THE ENGINEER PRIOR TO ANY WORK.

2. NO STREET SHALL BE CLOSED TO TRAFFIC WITHOUT WRITTEN PERMISSION FROM THE CITY TRAFFIC ENGINEER, EXCEPT WHEN DIRECTED BY LAW ENFORCEMENT OR FIRE OFFICIALS.

3. THE CONTRACTOR SHALL MAKE EVERY EFFORT TO PROVIDE FOR SMOOTH TRAFFIC FLOW AND SAFETY. ACCESS SHALL BE MAINTAINED FOR ALL PROPERTIES ADJACENT TO THE WORK.

4. INTERRUPTING OPERATIONS FOR A PERIOD OF SIX CONSECUTIVE CALENDAR DAYS, OR MORE, REQUIRE THE INSTALLATION OF TEMPORARY STREET STRIPING AND REMOVAL OF INTERFERING STRIPING BY SANDBLASTING. THE DETOURING STRIPING PLAN OR CONSTRUCTION TRAFFIC CONTROL PLAN MUST BE SUBMITTED TO THE CITY TRAFFIC ENGINEER FOR REVIEW AND APPROVAL.

5. ALL TRAFFIC CONTROL DEVICES SHALL BE RESTORED TO THEIR ORIGINAL CONDITION AT THE END OF THE WORK TO THE SATISFACTION OF THE CITY TRAFFIC ENGINEER.

6. TRAFFIC CONTROL DEVICES (TCDs) SHALL REMAIN VISIBLE AND OPERATIONAL AT ALL TIMES.

GOVERNING AGENCIES

COUNTY

WEBER COUNTY
2380 WASHINGTON BLVD #240,
OGDEN, UT 84401
PHONE: 801-399-8791

TRANSPORTATION

WEBER COUNTY
2380 WASHINGTON BLVD #240,
OGDEN, UT 84401
PHONE: 801-399-8374
FAX: 801-399-8862

FIRE INSPECTION

WEBER COUNTY
2380 WASHINGTON BLVD #240,
OGDEN, UT 84401
PHONE: 801-782-3580

SEWER

UTAH HIGHLANDS IMPROVEMENT DISTRICT
2401 F 6175 S
OGDEN, UT 84403
PHONE: 801-476-0945

STORM DRAIN

WEBER COUNTY
2380 WASHINGTON BLVD #240,
OGDEN, UT 84401
PHONE: 801-399-8374
FAX: 801-399-8862

CULINARY WATER

UTAH HIGHLANDS IMPROVEMENT DISTRICT
2401 F 6175 S
OGDEN, UT 84403
PHONE: 801-476-0945

SECONDARY WATER

WEBER BASIN WATER CONSERVANCY DISTRICT
2837 EAST HOSHWAY 193
LAYTON, UT 84040
PHONE: 801-773-1877

POWER

ROCKY MOUNTAIN POWER
1407 W NORTH TEMPLE
SALT LAKE CITY, UT 84116
ED 222224 801-543-3017

NATURAL GAS

QUESTAR CORPORATION
180 EAST 100 SOUTH
SALT LAKE CITY, UT 84145
HORE DAVIS 801-395-6806

TELEPHONE

QWEST CORPORATION
1425 WEST 3120 SOUTH
SALT LAKE CITY, UT 84119
GARY WEAVER 801-625-5380

CABLE

COMCAST CABLE CORPORATION
5902 SOUTH 300 WEST
SANDY, UT 84070
PHONE: 888-782-1061

DRAWING INDEX

- 1 COVER SHEET
- 2 NOTES & ABBREVIATIONS
- 3 CONSTRUCTION DETAILS
- 4 BOUNDARY, TOPOGRAPHIC AND UTILITY SURVEY
- 5 PLAT - NOT FOR CONSTRUCTION
- 6 PLAT & PROFILE
- 7 STORM WATER POLLUTION PREVENTION PLAN

PINNACLE
Engineering & Land Surveying, Inc.
Layton • West Bountiful • Mount Pleasant • St. George
327 W Gordon Ave, Suite #3
Layton, UT 84041
Phone: (801) 773-1910
Fax: (801) 719-6738

HIDDEN COVE SUBDIVISION
BOUNDARY, TOPOGRAPHIC AND UTILITY SURVEY
FOR: SOMERSET LANDS LLC
6260 SOUTH 2125 EAST
OGDEN, UTAH
PROJECT #17-019



REVISION	DATE	BY

SURVEYED BY: CAARH 06/2017
DESIGNED BY: J. J. J. 06/2017
DRAWN BY: J. J. J. 06/2017
CHECKED BY: J. J. J. 06/2017
APPROVED BY: J. J. J. 06/2017

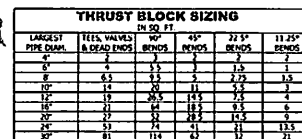
CAL BLUESTONES

1-800-662-4111



AT LEAST
48 HOURS
BEFORE
DIGGING

SHEET
1
OF 7



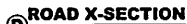
NOTES:

1. ALL CONCRETE TO BE 2,000 PSI MIN.
2. ALL THRUST BLOCKS TO BE PLACED BETWEEN THE PIPE SURFACE AND UNDISTURBED SOIL.
3. BACKFILL THRUST BLOCKS PER THE PIPE BACKFILL DETAIL.

(B) TYPICAL THRUST BLOCK DETAIL
N.T.S.



PRIVATE SITE ONLY
SEE WEBER COUNTY STANDARDS & SPECIFICATIONS
FOR WORK WITHIN THE WEBER COUNTY RIGHT-OF-WAY
M.T.S.



PRIVATE SITE ONLY
SEE WEBER COUNTY STANDARDS & SPECIFICATIONS
FOR WORK WITHIN THE WEBER COUNTY RIGHT-OF-WAY
N.T.S.



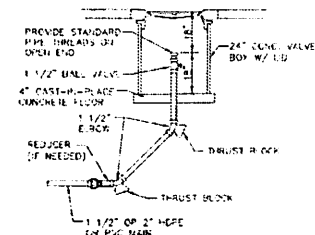
PRIVATE SITE ONLY
SPP WYDER COUNTY STANDARDS & SPECIFICATIONS
FOR WORK WITHIN THE WYDER COUNTY RIGHT-OF-WAY
N.T.S.



SEE WEBER COUNTY STANDARDS PLANS & SPECIFICATIONS ADDITIONAL INFORMATION

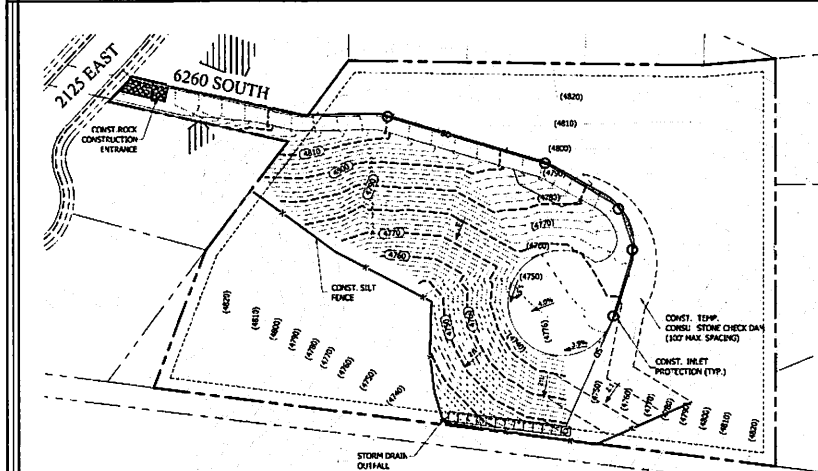


SEE UTAH HIGHLANDS IMPROVEMENT DISTRICT STANDARDS & SPECIFICATIONS



LOW PRESSURE
SANITARY SEWER CLEANOUT

① PRIVATE SITE ONLY
SEE WEBER COUNTY STANDARDS & SPECIFICATIONS
FOR WORK WITHIN THE WEBER COUNTY RIGHT OF WAY
TYPICAL, N.T.S.



THIS STORM WATER POLLUTION PREVENTION PLAN (SWPPP) WAS DEVELOPED AT THE REQUEST OF THE OWNER FOR THE DEVELOPMENT OF A 2.28 ACRE RESIDENTIAL SUBDIVISION IN THE PLANNED CITY OF UTAH. THIS PLAN IDENTIFIES POTENTIAL SOURCES OF POLLUTANTS OF STORM WATER, PREVENTS POLLUTION CONTROL MEASURES, AND ASSISTS IN ENFORCING IMPLEMENTATION AND MAINTENANCE OF THE BEST MANAGEMENT PRACTICES (BMPs) SPECIFIED HEREIN.

A NOTICE OF INTENT HAS BEEN FILED WITH THE STATE OF UTAH WATER RESOURCES CONTROL BOARD BY THE OWNER SO THAT THIS CONSTRUCTION PROJECT MAY BE COVERED UNDER THE STATE CONSTRUCTION PERMIT. THE PERMIT IS NATIONAL POLLUTION DISCHARGE ELIMINATION SYSTEM (NPDES) GENERAL PERMIT (NO. UTR 40002) FOR STORM WATER DISCHARGES ASSOCIATED WITH CONSTRUCTION ACTIVITY.

IN THE EVENT OF A CHANGE IN OWNERSHIP, A NEW NOTICE OF INTENT SHALL BE FILED WITH THE STATE WATER RESOURCES CONTROL BOARD.

IN THE EVENT OF A RELEASE OF A REPORTABLE QUANTITY OF A POLLUTANT, THE CONTRACTOR SHALL ADVISE THE OWNER TO NOTIFY THE NATIONAL RESPONSE CENTER, WEBER COUNTY AND PINNACLE ENGINEERING, INC. IF NECESSARY, THIS POLLUTION PREVENTION PLAN SHOULD BE REVISED TO REFLECT THE CHANGE IN CONDITIONS OF THE CONSTRUCTION ACTIVITY. A REPORTABLE QUANTITY IS ESTABLISHED BY 40 CODE OF FEDERAL REGULATIONS (CFR) 117.3.

ALL CONTRACTORS AND THEIR PERSONNEL WHOSE WORK CAN CONTRIBUTE TO OR CAUSE POLLUTION OF STORM WATER SHOULD BE MADE FAMILIAR WITH THIS POLLUTION PREVENTION PLAN. ADEQUATE TRAINING FOR IMPLEMENTATION OF THE MEASURES SPECIFIED HEREIN SHALL BE PROVIDED TO THE CONTRACTORS AND THEIR PERSONNEL.

CHANGES IN CONSTRUCTION OR IN CONDITIONS WHICH ARE NOT COVERED BY THIS PLAN SHOULD BE BROUGHT TO THE ATTENTION OF THE OWNER, STEPHEN P. FULTON, AND PINNACLE ENGINEERING, INC. IF NECESSARY, THIS POLLUTION PREVENTION PLAN WILL BE REVISED TO REFLECT THE CHANGE IN CONSTRUCTION OR IN CONDITIONS.

ALL PREVENTION AND CLEAN UP MEASURES SHOULD BE CONDUCTED IN ACCORDANCE WITH WEBER COUNTY ORDINANCES, AS WELL AS STATE AND FEDERAL REGULATIONS. WASTE MATERIALS SHOULD BE DISPOSED OF IN ALL DISCHARGERS OF STORM WATER MUST COMPLY WITH THE LAWS, REGULATIONS, AND ORDINANCES OF WEBER COUNTY AND OTHER LOCAL AGENCIES REGARDING THE DISCHARGE OF STORM WATER TO STORM DRAINS.

THIS PLAN DOES NOT COVER THE REMOVAL OF HAZARDOUS OR TOXIC WASTE. IN THE EVENT OF A DISCHARGE OR RELEASE OF A REPORTABLE QUANTITY OF TOXIC WASTE, WORK SHOULD BE STOPPED UNTIL THE SPILL CAN BE ASSESSED AND A MITIGATION REPORT PREPARED BY A QUALIFIED ENVIRONMENTAL CONSULTANT, AND IF NECESSARY, REVIEWED BY WEBER COUNTY AND ANY OTHER AGENCY HAVING JURISDICTION.

THIS SWPPP SHALL BE MADE AVAILABLE TO THE PUBLIC UNDER SECTION 308(b) OF THE CLEAN WATER ACT, UPON REQUEST BY MEMBERS OF THE PUBLIC. THE DISCHARGER SHALL MAKE AVAILABLE FOR REVIEW A COPY OF THIS SWPPP EITHER TO THE REGIONAL WATER BOARD OR DIRECTLY THIS SWPPP MUST BE KEPT ON SITE DURING CONSTRUCTION ACTIVITY AND MAKE AVAILABLE UPON REQUEST OF A REPRESENTATIVE OF THE REGIONAL WATER BOARD AND/OR THE LOCAL AGENCY HAVING JURISDICTION.

1) PROMOTION OF BEST MANAGEMENT PRACTICES (BMPs) FOR STORM WATER POLLUTION PREVENTION. ONLY STORM WATER FROM THE PROJECT SITE SHALL BE ALLOWED TO FLOW INTO THE ON-SITE STORM DRAIN SYSTEM. CLEAN, NON-COMBUSTIBLE WATER FROM THE PLANNED FIRE HYDRANTS, WATER MAINS, AND STORM DRAINS MAY BE DISCHARGED TO THE STORM DRAIN IF IT IS NOT ALLOWED TO COLLECT DEBRIS, AND TRASH FLOWING TO A STORM DRAIN INLET.

2) SOURCES OF STORM WATER POLLUTANTS. STORM WATER POLLUTANTS INCLUDE SOIL, SEDIMENT AND NUTRIENTS, OIL, GREASE, TOXIC CONTAMINANTS, AND HEAVY METALS. SOURCES OF STORM WATER POLLUTANTS INCLUDE BUT ARE NOT LIMITED TO SOIL EROSION BY WATER AND/OR WIND, CLEARING OF VEGETATION, EXCAVATION, VEHICLE AND EQUIPMENT FUELING AND MAINTENANCE, WASHING OF CONCRETE TRUCKS, MOTORS AND HANDLING EQUIPMENT, MINES, SOLVENTS AND ADHESIVES, AND LANDSCAPING WORK.

3) EROSION AND SEDIMENT CONTROLS. (1) COVER OR BARRIERS AROUND PERIMETER EXPOSED STOCKPILES OF SOILS, CONSTRUCTION AND LANDSCAPING MATERIALS WITH HEAVY PLASTIC SHEETING. (2) IN LANDSCAPING AREAS WHERE THE VEGETATION HAS NOT ESTABLISHED GROWTH AND TACKLE HOLD, CONSTRUCT AND/OR SOIL BARRIERS AROUND THEIR PERIMETER TO PREVENT THAT WATER WILL BE CONTAINED INSIDE THE BARRIERS OR THAT IT WILL NOT BE COMING TO A STORM DRAIN INLET. (3) REVEGETATE AREAS WHERE LANDSCAPING HAS BEEN OR WILL BE COMPLETED. (4) DIVERT STORM WATER RUNOFF AROUND DISTURBED SOILS WITH BARRIERS OR BERTS WALLS.

4) OTHER CONTROLS. (A) PROVIDE WEEDS OR AS NEEDED SWEEPING BY HAND OR MECHANICAL MEANS TO REMOVE THE WEEDS AND/OR SITE FREE OF DIRT, DUST, AND DEBRIS. (B) DISPOSE OF ACCUMULATED DIRT IN WATER CONTAINERS, OR TRUCKS, IF THE SITE IS TO A LANDFILL. (C) SANITARY/SEPTIC DISPOSAL. PORTABLE TOILETS AND OTHER SANITARY FACILITIES SHALL BE SERVICED WEEKLY OR AS NEEDED AND PUMPED CLEAN BY A WASTE DISPOSAL COMPANY. NO TOXIC OR HAZARDOUS WASTE SHALL BE DISPOSED IN A PORTABLE TOILET OR IN THE ON-SITE SANITARY SINK. (D) SPILLS. (1) STORE ADEQUATE AMOUNTS OF MATERIALS, RAGS, BROOMS, SHOVELS, AND WASTE CONTAINERS ON THE SITE TO CLEAN UP SPILLS OF MATERIALS SUCH AS FUEL, PAINT, SOLVENTS, OR CLEANERS. CLEAN UP SPILLS IMMEDIATELY. (2) FOR REPORTABLE QUANTITIES OF HAZARDOUS OR TOXIC SUBSTANCES, SECURE THE SERVICES OF QUALIFIED PERSONNEL FOR CLEANUP AND DISPOSAL. (3) CONTROL OF ALLOWABLE NON-TOXIC WASTE DISCHARGES. DISCHARGE DISCHARGE, DISCHARGE CONTROLS, MEASURES, PPE, FUELING AND TESTING, AND PPE WASHING ARE ALLOWED IF THEY CANNOT BE STOPPED BY THE DISCHARGER. IN VIOLATION OF WATER QUALITY STANDARDS, AND ARE NOT REQUIRED TO BE PERMITTED BY THE LOCAL REGIONAL WATER QUALITY CONTROL BOARD. (4) VEHICLES AND EQUIPMENT. (A) FUEL LEAKS OF FUEL, OIL AND OTHER SUBSTANCES IMMEDIATELY. (B) PERSONNEL FUELING AND SERVICE OF VEHICLES OR EQUIPMENT OFF-SITE WHEN POSSIBLE. IF FUELING OR SERVICE OF EQUIPMENT IS PERFORMED ON-SITE, THEN PROVIDE AN IMPERVIOUS, CONTAINED AREA WHERE ANY SPILLS CAN BE CONTAINED WITHOUT FLOWING TO A STORM DRAIN INLET OR INTO THE GROUND. (C) USE DIRT PANS TO CATCH LEAKS AND SPILLS. (D) CONCRETE TRUCKS, MOTORS AND HANDLING EQUIPMENT. (1) DO NOT DISPOSE OF WASHOUT FROM THE WASHING OF STORM DRAIN LINES SHOULD BE EXCESSIVE AND CLEANED ANNUALLY TO KEEP THEM CLEAN AND CLEAR OF DEBRIS. (2) ALL ON-SITE STORM WATER DRAINS SHOULD BE CLEARLY MARKED "STORM WATER ONLY".

5) COMPLETION OF CONSTRUCTION ACTIVITIES AND NOTICE OF TERMINATION. WHEN CONSTRUCTION ACTIVITIES HAVE BEEN COMPLETED ON THIS SITE, THE OWNER SHALL FILE A LETTER WITH THE STATE DEPARTMENT OF WATER QUALITY. THIS LETTER SHALL CERTIFY THAT THE CONSTRUCTION ACTIVITY HAS BEEN COMPLETED, THAT ALL ELEMENTS OF THE SWPPP HAVE BEEN IMPLEMENTED, THAT CONSTRUCTION AND EQUIPMENT MAINTENANCE WASTES HAVE BEEN DISPOSED OF PROPERLY, THAT THE SITE IS IN COMPLIANCE WITH ALL LOCAL STORM WATER REQUIREMENTS INCLUDING EROSION/SEDIMENT CONTROL REQUIREMENTS, POLICES, AND ORDINANCES.

6) INSPECTION. (A) REGULAR INSPECTION, INSPECTION AND DISPOSITION BEFORE AND AFTER STORMS. (B) INSPECTION OF THE SITE WEEKLY OR AS NEEDED TO INSURE THAT STORM WATER DRAINS ARE FREE OF DIRT AND DEBRIS. (C) BEFORE A STORM, INSPECT THE SITE TO INSURE THAT STORM WATER POLLUTION CONTROL MEASURES ARE IN PLACE. (D) AFTER A STORM, INSPECT ALL STORM WATER DRAINS TO INSURE THAT THEY ARE CLEAR OF DIRT AND DEBRIS. CLEAN THOSE STORM WATER DRAINS THAT ARE NOT CLEAR AND FREE OF DEBRIS. (E) THE REGIONAL WATER BOARD MAY REQUIRE THE DISCHARGER TO CONDUCT ADDITIONAL SITE INSPECTIONS, SUBMIT REPORTS AND CATCHING, OR TO PROVIDE SAMPLING AND ANALYSIS. (F) ALL DISCHARGERS ARE REQUIRED TO CONDUCT INSPECTIONS OF THE CONSTRUCTION SITE PRIOR TO ANTICIPATED STORM EVENTS AND AFTER ACTUAL STORM EVENTS TO IDENTIFY AREAS CONTRIBUTING TO A STORM WATER DISCHARGE, TO EVALUATE WHETHER MEASURES TO REDUCE POLLUTANT LOADINGS IDENTIFIED IN THIS SWPPP ARE ADEQUATE, TO IMPROVE IMPLEMENTATION IN ACCORDANCE WITH THE TERMS OF THE GENERAL PERMIT, AND TO DETERMINE WHETHER ADDITIONAL CONTROL MEASURES ARE NEEDED. (G) EACH DISCHARGER MUST CERTIFY ANNUALLY THAT THIS CONSTRUCTION ACTIVITY IS IN COMPLIANCE WITH THE REQUIREMENTS OF THE GENERAL PERMIT AND THIS SWPPP. THIS CERTIFICATION MUST BE BASED ON THE SITE INSPECTIONS. THE FIRST CERTIFICATION MUST BE COMPLETED BY JULY 15, 2002, AND EACH YEAR 15, THEREAFTER. (H) THE DISCHARGER IS REQUIRED TO RETAIN RECORDS OF ALL MONITORING INFORMATION, COPIES OF ALL REPORTS REQUIRED BY THE GENERAL PERMIT, AND RECORDS OF ALL DATA USED TO COMPLETE THE NOTICE OF INTENT FOR CONSTRUCTION ACTIVITY FOR A PERIOD OF AT LEAST THREE YEARS. THIS PERIOD MAY BE EXTENDED BY THE REGIONAL WATER BOARD. (I) WITH THE EXCEPTION OF NONCOMPLIANCE REPORTING, DISCHARGERS ARE NOT REQUIRED TO SUBMIT THE RECORDS EXCEPT UPON REQUEST BY THE STATE DEPARTMENT OF WATER QUALITY.

7) MAINTENANCE OF CONTROLS. (1) MAINTENANCE AND REPAIR ALL CONTROLS AND MEASURES INDICATED ON THIS PLAN SHOULD BE MAINTAINED IN GOOD AND EFFECTIVE CONDITION IF ANY CONTROLS OR MEASURES ARE DAMAGED OR REMOVED, THEY SHOULD BE PROMPTLY REPAIRED OR RESTORED. (2) PLAN REVISIONS. IF CONSTRUCTION ACTIVITY OR CONDITIONS CHANGE FROM THOSE SHOWN IN THIS PLAN, THEN THIS PLAN SHALL BE REVISED TO REFLECT THE CURRENT CONDITIONS.

8) FINAL STABILIZATION AND POST-CONSTRUCTION CONTROLS. (1) AFTER CONSTRUCTION HAS BEEN COMPLETED, THE SITE SHALL BE SWEEP CLEAN, STORM WATER DRAINS (GUTTERS AND BASINS) SHALL BE CLEANED, AND ALL WASTE AND LEFTOVER MATERIALS SHALL BE REMOVED FROM THE SITE. (2) ALL LANDSCAPING AND PLANTING AREAS SHOULD BE WELL MAINTAINED TO PREVENT EROSION. AVOID OVER WATERING OF LANDSCAPING. (3) ALL PAVED AREAS SHOULD BE SWEEP WEEKLY OR AS NEEDED EITHER BY HAND OR BY MECHANICAL MEANS TO KEEP THE SITE FREE OF DIRT, DUST, AND DEBRIS. (4) WASTE MATERIALS ON-SITE SHOULD BE STORED IN COVERED CONTAINERS WHICH ARE CLEANED OUT REGULARLY. (5) TESTING OF FIRE HYDRANTS ON-SITE SHALL NOT BE CONDUCTED UNTIL THE AREA WHERE THE WATER DISCHARGES HAS BEEN SWEEP CLEAN OF DIRT AND DEBRIS. (6) STORM DRAIN LINES SHOULD BE EXCESSIVE AND CLEANED ANNUALLY TO KEEP THEM CLEAN AND CLEAR OF DEBRIS. (7) ALL ON-SITE STORM WATER DRAINS SHOULD BE CLEARLY MARKED "STORM WATER ONLY".

9) COMPLETION OF CONSTRUCTION ACTIVITIES AND NOTICE OF TERMINATION. WHEN CONSTRUCTION ACTIVITIES HAVE BEEN COMPLETED ON THIS SITE, THE OWNER SHALL FILE A LETTER WITH THE STATE DEPARTMENT OF WATER QUALITY. THIS LETTER SHALL CERTIFY THAT THE CONSTRUCTION ACTIVITY HAS BEEN COMPLETED, THAT ALL ELEMENTS OF THE SWPPP HAVE BEEN IMPLEMENTED, THAT CONSTRUCTION AND EQUIPMENT MAINTENANCE WASTES HAVE BEEN DISPOSED OF PROPERLY, THAT THE SITE IS IN COMPLIANCE WITH ALL LOCAL STORM WATER REQUIREMENTS INCLUDING EROSION/SEDIMENT CONTROL REQUIREMENTS, POLICES, AND ORDINANCES.

"BEST MANAGEMENT PRACTICES" (BMPs) MEANS A COMBINATION OF ACTIVITIES, PRECAUTIONS, PRACTICES, MAINTENANCE PROCEDURES, AND OTHER MANAGEMENT PRACTICES TO PREVENT OR REDUCE THE POLLUTION OF WATERS OF THE UNITED STATES. BMPs ALSO INCLUDE TREATMENT REQUIREMENTS, PRACTICES, PROCEDURES, AND PRACTICES TO CONTROL, STOP, SPILLAGE OR LEAKS, WASTE DISPOSAL, OR DRAINAGE FROM RAIN MATERIAL STORAGE.

"CLEAN WATER ACT" (CWA) MEANS THE FEDERAL WATER POLLUTION CONTROL ACT, ENACTED BY PUBLIC LAW 92-500 AS AMENDED BY PUBLIC LAWS 95-217, 95-274, 96-488, AND 99-111; 33 USC 1251 ET SEQ.

"CONSTRUCTION SITE" IS THE LOCATION OF THE CONSTRUCTION ACTIVITY.

"NON-STORM WATER DISCHARGE" MEANS ANY DISCHARGE TO STORM DRAIN SYSTEMS THAT IS NOT COMPOSED ENTIRELY OF STORM WATER EXCEPT DISCHARGE PURSUANT TO A LICENSE PERMIT AND DISCHARGES RESULTING FROM FIRE FIGHTING ACTIVITIES.

"STORM WATER" MEANS STORM WATER RUNOFF, SHOW MELT RUNOFF, SURFACE RUNOFF AND RUNOFF FROM AGRICULTURAL LAND.

"STORM WATER" MEANS STORM WATER RUNOFF, SHOW MELT RUNOFF, SURFACE RUNOFF AND RUNOFF FROM AGRICULTURAL LAND.

"TOXIC WASTE" MEANS "HAZARDOUS OR TOXIC WASTE" AS DEFINED IN THE FEDERAL CLEAN WATER ACT (CWA) SECTION 502(1). POLLUTION ALSO MEANS "AN ALTERATION OF THE QUALITY OF THE WATERS OF THE STATE BY WASTE TO A DEGREE WHICH UNREASONABLY AFFECTS EITHER THE WATERS FOR BENEFICIAL USES, OR FACILITIES WHICH SERVE THESE BENEFICIAL USES." (CALIFORNIA WATER CODE SECTION 13050(c)).

"CONTAMINATION" MEANS "AN IMPAIRMENT OF THE QUALITY OF THE WATERS OF THE STATE BY WASTE TO A DEGREE WHICH CREATES A HAZARD TO THE PUBLIC HEALTH THROUGH POISONING OR THROUGH THE SPREAD OF DISEASE, INCLUDING ANY EQUIVOCAL EFFECT RESULTING FROM THE DISPOSAL OF WASTE, WHETHER OR NOT WATERS OF THE STATE ARE AFFECTED".

"WASTEWATER" MEANS "ANYTHING WHICH MEETS ALL OF THE FOLLOWING REQUIREMENTS: (1) IS INJURIOUS TO HEALTH, OR IS OBSCURE OR OFFENSIVE TO THE SENSES, OR AN OBSTRUCTION TO THE FREE USE OF PROPERTY, SO AS TO INTERFERE WITH THE COMFORTABLE ENJOYMENT OF LIFE AND PROPERTY; (2) AFFECTS AT THE SAME TIME THE AIR, WATER, OR COMMUNITY OR NEIGHBORHOOD, OR ANY CONSIDERABLE NUMBER OF PERSONS, ALTHOUGH THE EXTENT OF THE ANNOYANCE OR DAMAGE INFLICTED UPON INDIVIDUALS MAY BE UNREASONABLE; (3) OCCURS DURING OR AS A RESULT OF THE TREATMENT OR DISPOSAL OF WASTE".

"LOCAL AGENCY" MEANS ANY AGENCY THAT IS INVOLVED WITH REVIEW, APPROVAL, OR OVERSIGHT OF THE CONSTRUCTION SITES (a) CONSTRUCTION ACTIVITY, (b) EROSION AND SEDIMENT CONTROLS OF STORM WATER DISCHARGE.

CONCRETE WASTE MANAGEMENT

NOTES:

- DISCHARGE AND WASTE CONCRETE SHALL NOT BE WASHED INTO THE STREET OR INTO A DRAINAGE SYSTEM.
- FOR WASHOUT OF CONCRETE AND PORTLAND CEMENT, A DESIGNATED CONTAINMENT FACILITY OF SUFFICIENT CAPACITY TO RETAIN LIQUID AND SOLID WASTE SHALL BE PROVIDED ON SITE.
- SURFACED FROM CONCRETE AND ASPHALT SAW CUTTINGS SHALL BE VACUATED OR CONTAINED, DRIED, PICKED UP, AND DISPOSED OF PROPERLY.

ROCK CONSTRUCTION ENTRANCE

REQUIRED UNTIL PLACING ASPHALT

MAINTENANCE: ROCK CONSTRUCTION ENTRANCE THRESHOLD SHALL BE CONSTANTLY MAINTAINED TO THE SPECIFIED DIMENSIONS BY ADDING ROCK. A STOCK PILE OF ROCK MATERIAL SHALL BE MAINTAINED ON SITE FOR THIS PURPOSE. DRAIN SPACE UNDER WASH BACK SHALL NOT BE KEPT OPEN AT ALL TIME. DAMAGE TO THE WASH BACK SHALL BE REPAIRED PRIOR TO FURTHER USE OF THE RACK. AT THE END OF EACH CONSTRUCTION DAY, ALL SEDIMENT DEPOSITED ON PAVED ROADWAYS SHALL BE REMOVED AND RETURNED TO THE CONSTRUCTION SITE.

FABRIC UNDER GRATE

MAINTENANCE: LIFT GRATE & CLEAN SEDIMENT OFF OF FABRIC WEEKLY OR AS NEEDED AFTER A STORM. TAKE CARE WHILE LIFTING GRATE TO PREVENT SEDIMENT FROM FALLING INTO THE CATCH BASIN. DISPOSE OF SEDIMENT AWAY FROM THE STORM DRAIN.

STEEL PLATE & DRAIN ROCK

MAINTENANCE: CHECK THAT DRAIN ROCK COMPLETELY COVERS THE CATCH BASIN WEEKLY OR AS NEEDED AFTER A STORM. IF SEDIMENT COVERS THE DRAIN ROCK, REMOVE THE SEDIMENT.

SILT FENCE DETAIL

RESPONSIBLE PARTY

DONALD FULTON
BOX 65999
SALT LAKE CITY, UT 84165
TEL: 385-242-4277

CALL BLUESTAKES

AT LOST 48 HOURS BEFORE BEGINNING

SHEET 7 OF 7

PINNACLE

Engineering & Land Surveying, Inc.

Layton • West Jordan • St. George • Provo • Ogden • Salt Lake City

327 W. Garden Ave., Suite 410
Layton, UT 84041

Phone: (801) 772-9191
Fax: (801) 772-6758

HIDDEN COVE SUBDIVISION

STORM WATER POLLUTION PREVENTION PLAN
FOR: SUMMERSSET LANDS LLC
6260 SOUTH 2125 EAST
OGDEN, UTAH
PROJECT #17-019

DATE: 06-2017
DESIGNED BY: DONALD FULTON
DRAWN BY: DONALD FULTON
CHECKED BY: DONALD FULTON
SCALE: AS SHOWN

