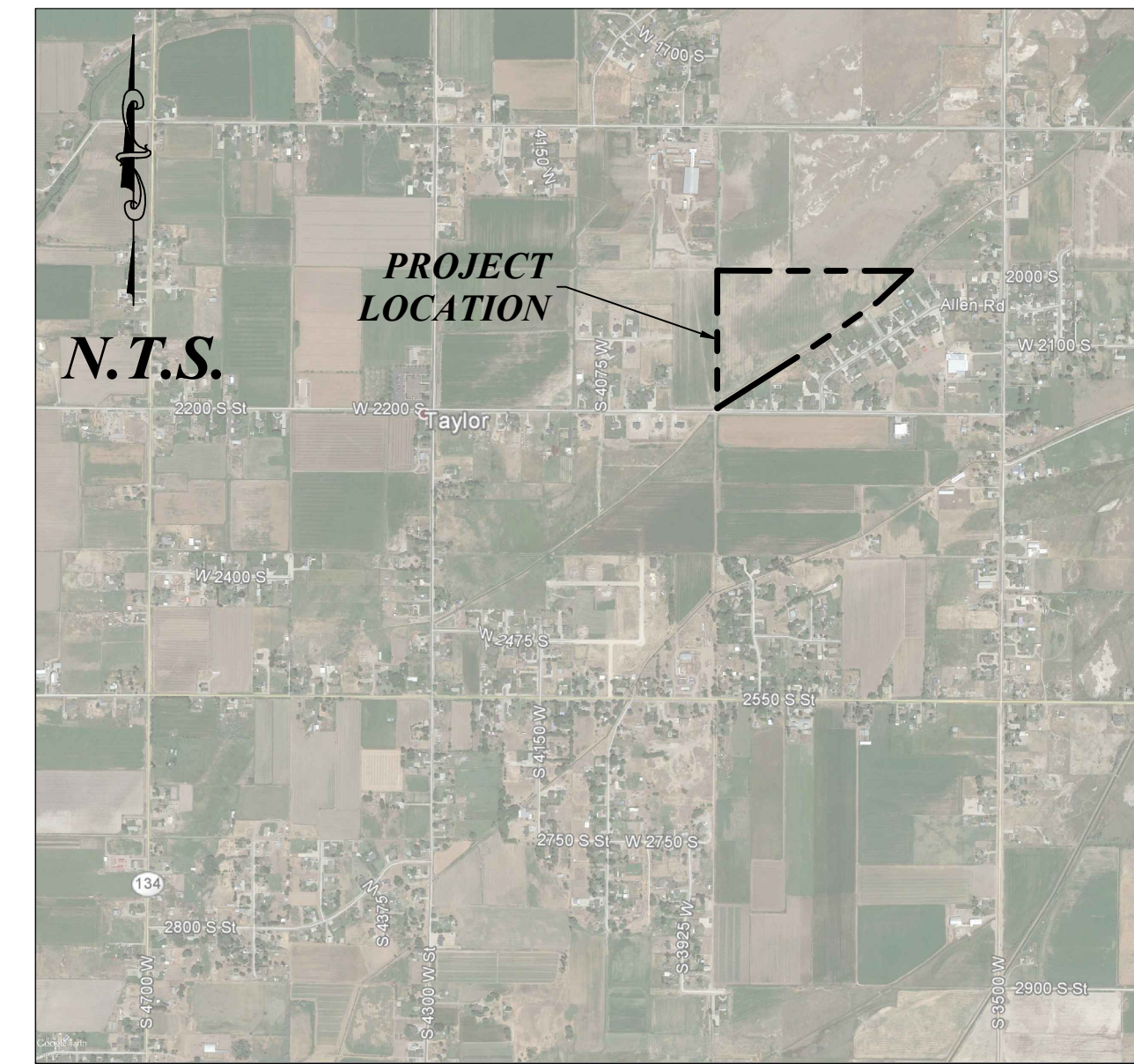


# SADDLERBRED ACRES SUBDIVISION

PART OF THE NORTHEAST 1/4 OF SECTION 28, TOWNSHIP 6 NORTH, RANGE 2 WEST, SALT LAKE BASE & MERIDIAN, U.S. SURVEY  
WEBER COUNTY, UTAH



VICINITY MAP

181 North 200 West, Suite #4  
Bountiful, Utah 84010  
Phone 801-298-2236

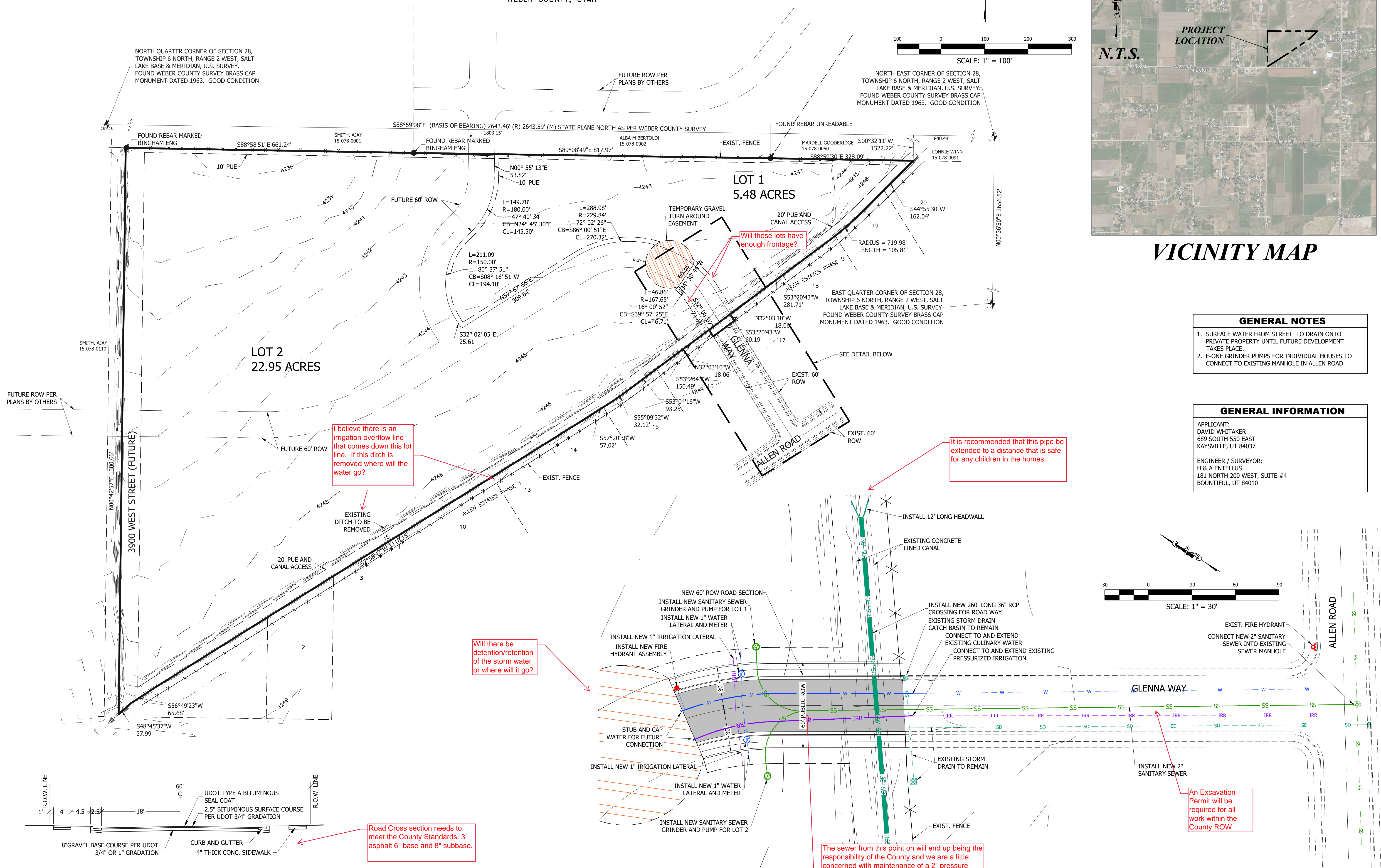


PRELIMINARY  
NOT FOR  
CONSTRUCTION

PRELIMINARY SUBDIVISION PLAN  
SADDLERBRED ACRES SUBDIVISION

LOCATED IN THE NE 1/4 OF SECTION 28, T.6N., R.2W., S.L.B.&M.  
TAYLOR CITY, WEBER COUNTY, UTAH  
Parcel # 15-078-0006

DATE:	DESCRIPTION:
DRAWN: JKS	06/29/2017
APPROVED: STA	06/29/2017
PROJECT: 1034014	1034014 Preliminary.dwg
<b>C400</b> PRELIMINARY SUBDIVISION PLAN	

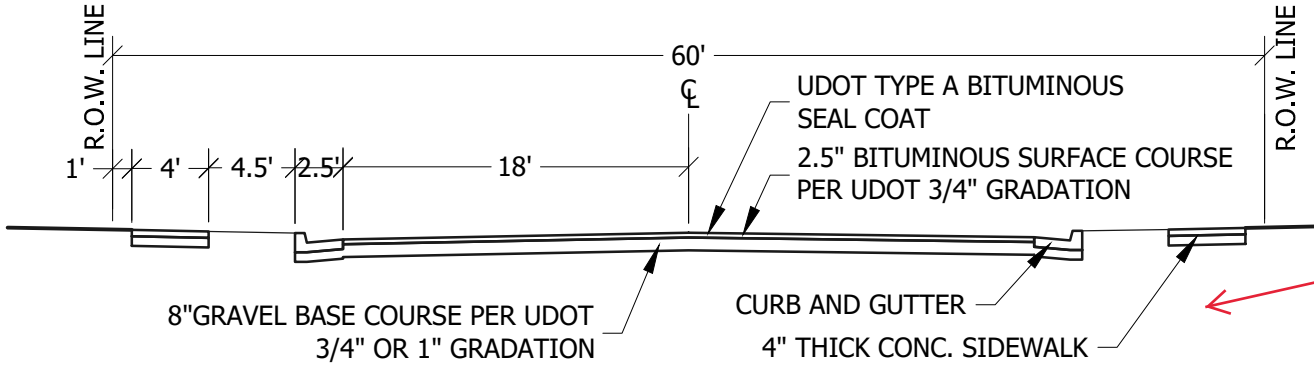
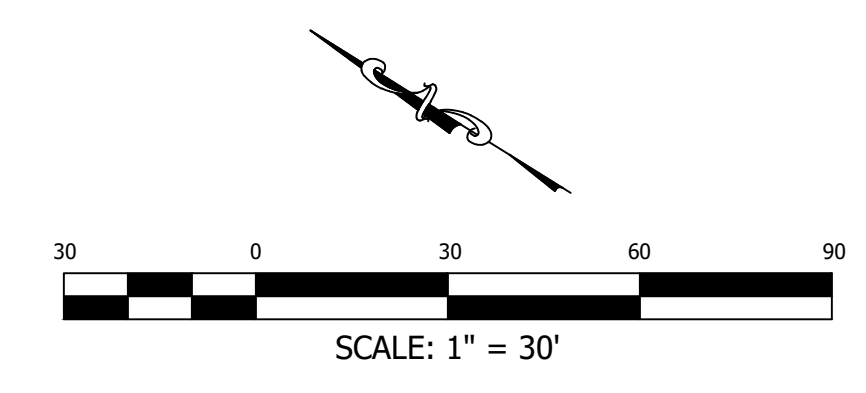


- GENERAL NOTES**
- SURFACE WATER FROM STREET TO DRAIN ONTO PRIVATE PROPERTY UNTIL FUTURE DEVELOPMENT TAKES PLACE.
  - E-ONE GRINDER PUMPS FOR INDIVIDUAL HOUSES TO CONNECT TO EXISTING MANHOLE IN ALLEN ROAD

**GENERAL INFORMATION**

APPLICANT:  
DAVID WHITAKER  
689 SOUTH 550 EAST  
KAYSVILLE, UT 84037

ENGINEER / SURVEYOR:  
H & A ENTELLUS  
181 NORTH 200 WEST, SUITE #4  
BOUNTIFUL, UT 84010



TYPICAL 60' ROADWAY X-SECTION

I believe there is an irrigation overflow line that comes down this lot line. If this ditch is removed where will the water go?

Will there be detention/retention of the storm water or where will it go?

Will these lots have enough frontage?

It is recommended that this pipe be extended to a distance that is safe for any children in the homes.

Road Cross section needs to meet the County Standards. 3" asphalt 6" base and 8" subbase.

The sewer from this point on will end up being the responsibility of the County and we are a little concerned with maintenance of a 2" pressure line. How is access attained if there were a blockage in the 2" pipe? Would it be better for this to be a 4" pipe? We may need to sit down with the developer on this and discuss the options a little more.

An Excavation Permit will be required for all work within the County ROW