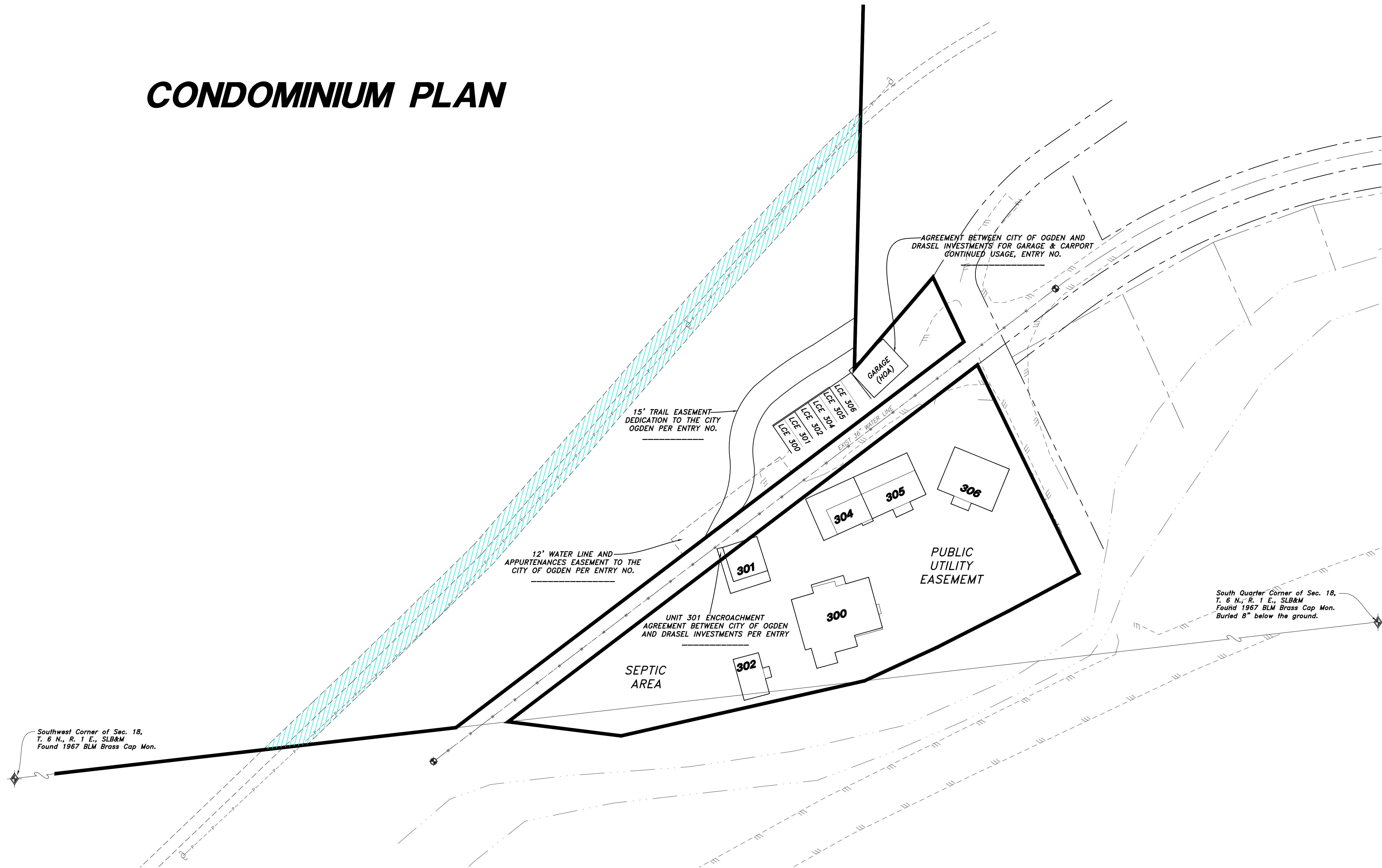




# CONDOMINIUM PLAN



Southwest Corner of Sec. 18,  
T. 6 N., R. 1 E., SLB&M  
Found 1967 BLM Brass Cap Mon.

12' WATER LINE AND  
APPURTENANCES EASEMENT TO THE  
CITY OF OGDEN PER ENTRY NO.

15' TRAIL EASEMENT  
DEDICATION TO THE CITY  
OGDEN PER ENTRY NO.

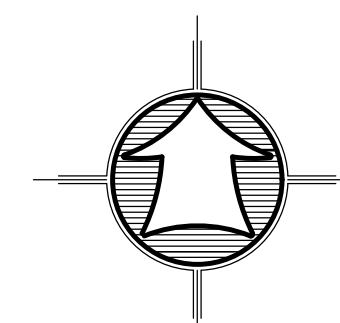
SEPTIC  
AREA

UNIT 301 ENCROACHMENT  
AGREEMENT BETWEEN CITY OF OGDEN  
AND DRASEL INVESTMENTS PER ENTRY

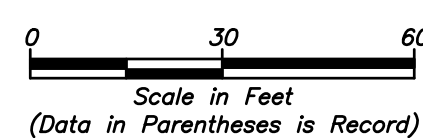
AGREEMENT BETWEEN CITY OF OGDEN AND  
DRASEL INVESTMENTS FOR GARAGE & CARPORT  
CONTINUED USAGE, ENTRY NO.

PUBLIC  
UTILITY  
EASEMENT

South Quarter Corner of Sec. 18,  
T. 6 N., R. 1 E., SLB&M  
Found 1967 BLM Brass Cap Mon.  
Buried 8" below the ground.



Scale: 1" = 30'



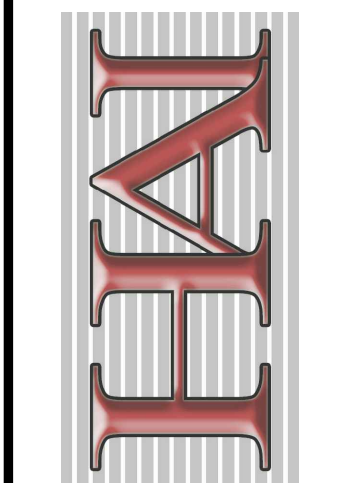
Scale in Feet  
(Data in Parentheses is Record)

### LEGEND

- Subject Property Line
- - - - - Adjoining Property Line
- - - - - Previous Property Line
- Centerline
- - - - - Ditch
- - - - - Field Separation Line
- - - - - Fence Line (Wire)
- - - - - Fence Line (wood or Vinyl)
- Street Monument
- Found rebar set by others
- Set 5/8"x24" Rebar With Cap
- ◆ Section Corner

No.	Date	By	Revision

**HANSEN & ASSOCIATES, INC.**  
Consulting Engineers and Land Surveyors  
538 North Main Street, Brigham, Utah 84302  
Brigham City, Utah  
Logan, Utah  
Visit us at [www.hais.net](http://www.hais.net)  
(435) 752-3481 (801) 399-6905 (435) 752-9272



Drawn By: KE Date: 6-30-17  
Designed By: \_\_\_\_\_  
Checked By: \_\_\_\_\_  
Approved By: \_\_\_\_\_  
Scale: 1" = 30'  
Drawing File: 16-3-233 V15.20161214  
JOB NUMBER: 16-5-233

CONDOMINIUMS PLAN  
**DRASEL CONDOMINIUMS**  
Ogden City, Weber County, Utah  
A Part of the Southwest Quarter of Section 24,  
Township 6 North, Range 1 West, Salt Lake Base & Meridian

Sheet  
**2**  
of  
**2**  
Sheets