

PART OF SECTIONS 29 & 32, T.7N., R.1E., S.L.B. & M.

NORDIC VALLEY ESTATES NO. 1

LOTS 1 - 9 & 22 - 29

IN WEBER COUNTY

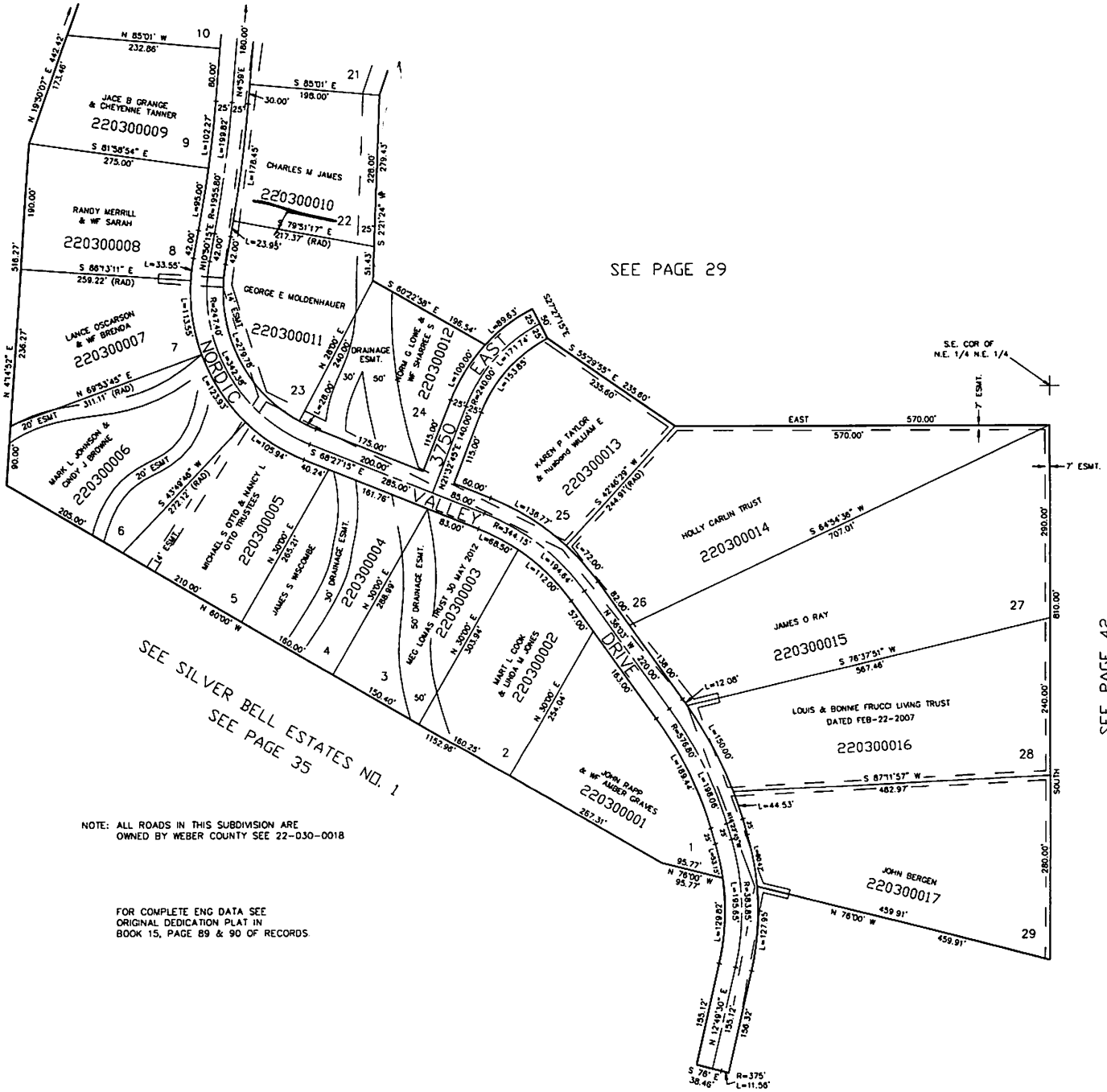
SCALE 1" = 120'

TAXING UNIT: 28

SEE PAGE 31

SEE PAGE 29

SEE PAGE 29



SEE SILVER BELL ESTATES NO. 1
SEE PAGE 35

NOTE: ALL ROADS IN THIS SUBDIVISION ARE OWNED BY WEBER COUNTY SEE 22-030-0018

FOR COMPLETE ENG DATA SEE ORIGINAL DEDICATION PLAT IN BOOK 15, PAGE 89 & 90 OF RECORDS

SEE PAGE 34

SEE PAGE 42