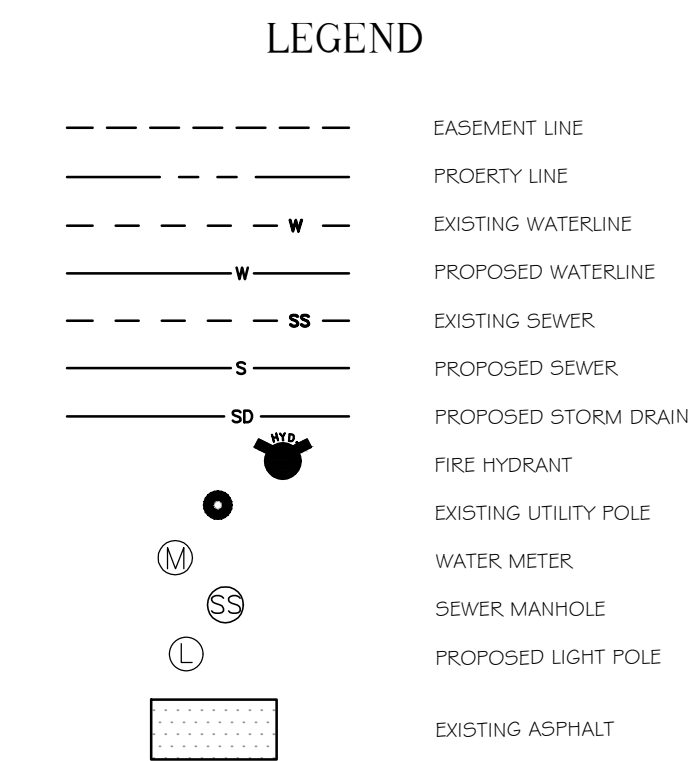
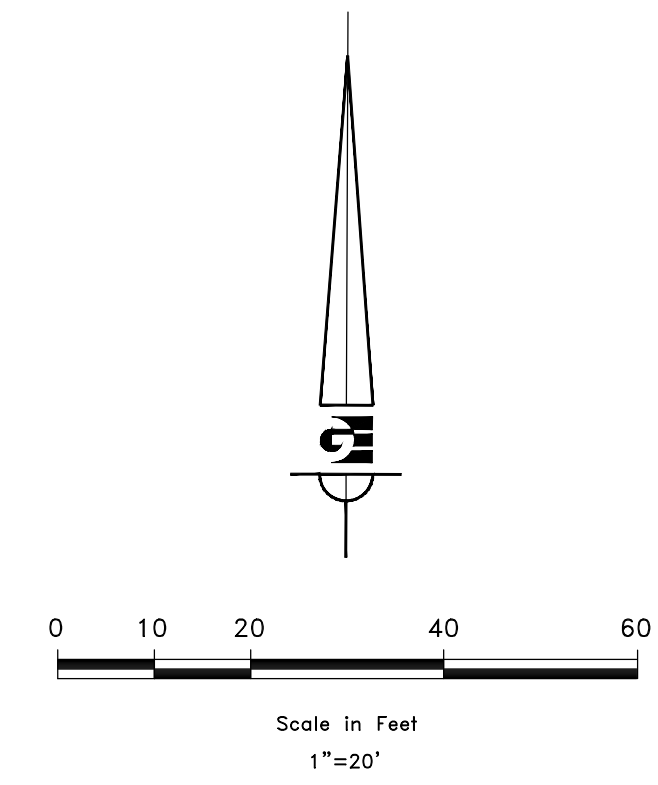
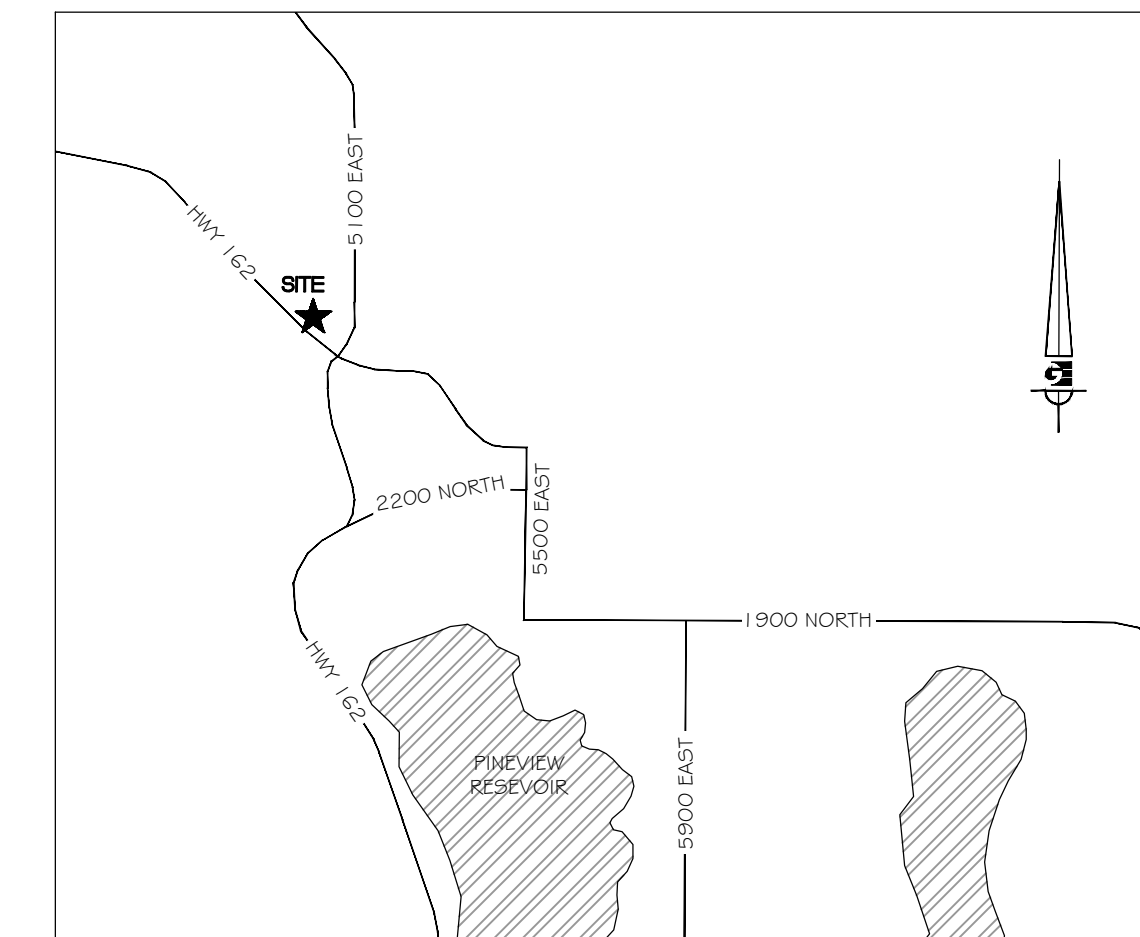
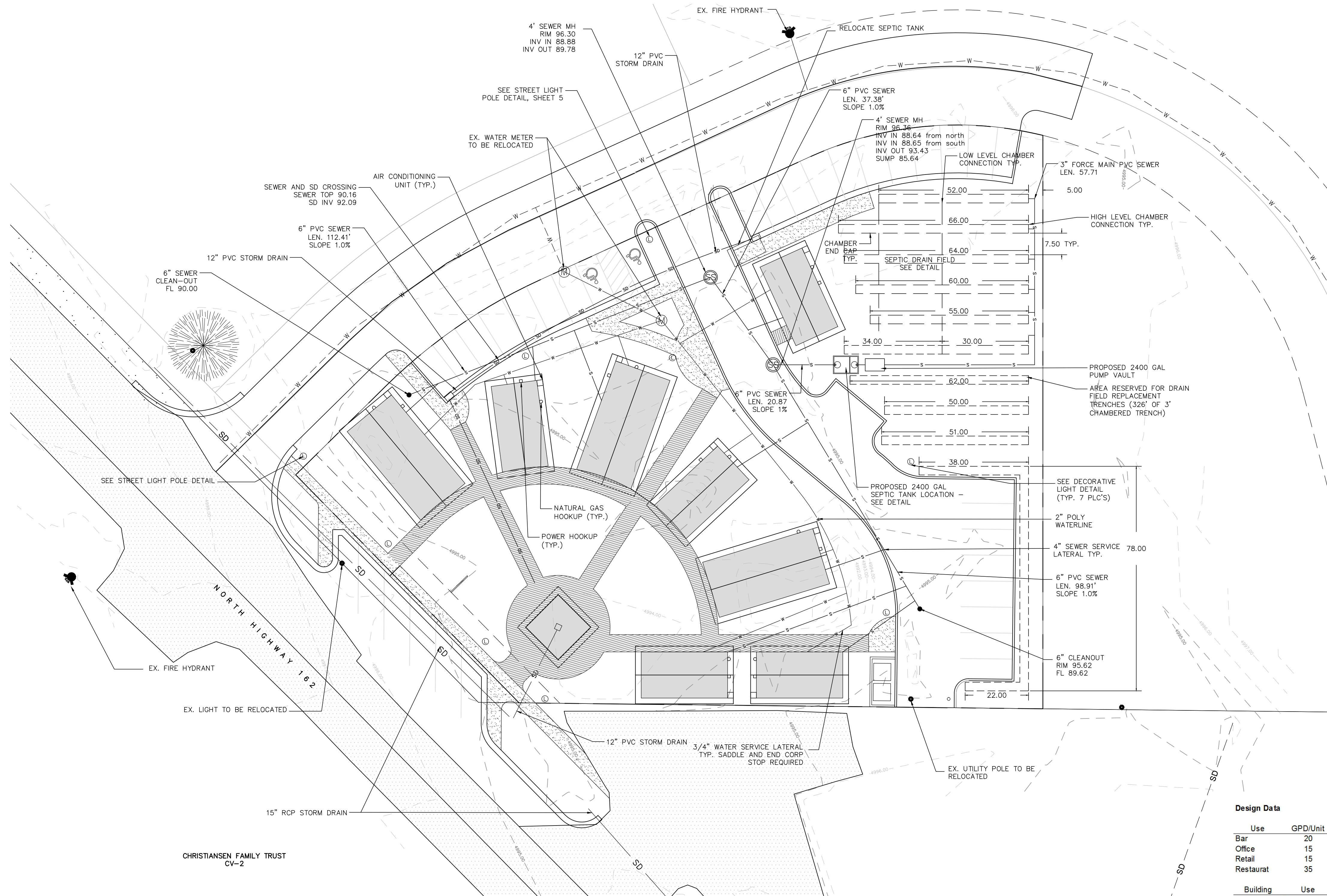


# UTILITY PLAN EDEN CENTER

PART OF THE NORTHWEST QUARTER OF  
SECTION 34 T7N, R1E, SLB & M, U.S. SURVEY  
EDEN CITY, WEBER COUNTY, UTAH  
JUNE 2012



**Design Data**

Use	GPD/Unit	Units
Bar	20	per seat
Office	15	per employee
Retail	15	per employee
Restaurant	35	per seat

Building	Use	Units	GPD
1	Bar	20	400
2	Retail	2	30
3	Office	6	90
4	Retail	2	30
5	Office	5	75
6	Retail	2	30
7	Retail	2	30
8	Food To Go	12	420
		<b>Total</b>	<b>1105</b>

Obsorption Rate (40 MPI)	0.8 GPD/SF
Gravel Obsorption Area Required	1381 SF
Gravel Trench Required	460.4 LF
Chambered Trench Required	322.3 LF
<b>Planned Chambered Trench Length</b>	<b>326 LF</b>

**NOTICE:**  
EXISTING UTILITIES ARE SHOWN ON PLANS FOR THE CONVENIENCE OF THE CONTRACTOR ONLY. THE CONTRACTOR IS RESPONSIBLE FOR THE PROTECTION OF ALL UTILITIES. THE ENGINEER BEARS NO RESPONSIBILITY FOR THE UTILITIES NOT SHOWN OR SHOWN INCORRECTLY.

Call BLUE STAKES BEFORE YOU Dig

1-800-662-4111  
UTAH DIVISION OF PROFESSIONAL SERVICE EXAMINERS

**DEVELOPER**  
WOP WOM, LLC.  
ERIC SMITH  
212 MERCHANT ST., #330  
HONOLULU, HI 96813  
PHONE: (808) 524-3551  
FAX: (808) 524-8803

**CULINARY WATER NOTES**

- ALL INSTALLATION AND MATERIALS SHALL CONFORM TO WEBER COUNTY STANDARDS AND SPECIFICATIONS AND PLANS.
- DISINFECTION TESTS SHALL BE PERFORMED WITH COOPERATION FROM THE CONTRACTOR IN PERFORMING ANY NECESSARY EXCAVATION AND SUBSEQUENT BACKFILLING.
- UNLESS OTHERWISE SPECIFIED, ALL WATERLINES SHALL BE AWWA C900 PVC CLASS 150, PER ASTM D2241.
- CONTRACTOR SHALL LOCATE VALVES PRIOR TO CONNECTION WITH EXISTING SYSTEM, BUT SHALL NOT OPERATE ANY VALVE WITHOUT PERMISSION.
- ALL WATER MAINS, VALVES, FIRE HYDRANTS, SERVICES AND APPURTENANCES SHALL BE INSTALLED, TESTED, AND APPROVED PRIOR TO PAVING.

**SANITARY SEWER NOTES**

- THE LOCATION OF EXISTING UTILITIES SHOWN ARE APPROXIMATE ONLY, AND THE CONTRACTOR SHALL VERIFY THE LOCATION AND ELEVATION OF ALL UTILITIES SHOWN OR NOT SHOWN ON THESE PLANS.
- ALL UTILITY CONSTRUCTION SHALL BE IN CONFORMANCE WITH WEBER COUNTY STANDARDS AND SPECIFICATIONS.
- ALL GRAVITY SANITARY SEWER LINES SHALL BE SDR-35 PVC MATERIAL. SEWER LINE CONSTRUCTION AND MATERIALS SHALL CONFORM TO ASTM STANDARDS AND SPECIFICATIONS.
- CONTRACTOR IS RESPONSIBLE TO PROTECT ALL EXISTING STRUCTURES AND IMPROVEMENTS DURING INSTALLATION OF SANITARY SEWER LINE.

**SEPTIC NOTES**

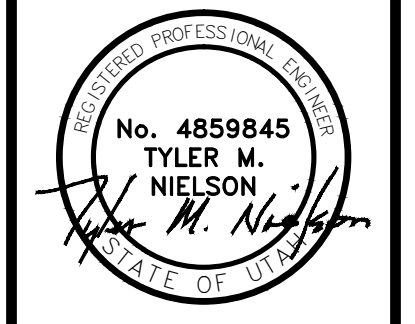
- MAINTAIN 5' MIN OF EARTH BETWEEN TRENCH AND PROPERTY LINES
- MAINTAIN 5' MIN OF UNDISTURBED EARTH BETWEEN SEPTIC TANK AND BUILDING FOUNDATION.
- MAINTAIN 100' SEPARATION BETWEEN ANY TRENCH, AND DITCH, OR WATER WELL.
- THESE PLANS ARE INTENDED TO SATISFY STATE AND COUNTY REQUIREMENTS FOR ONSITE WASTEWATER SYSTEM APPROVAL. ADDITIONAL CIVIL DESIGN OR CONTRACTOR SERVICES MAY BE REQUIRED.

NOTE: ALL CONSTRUCTION TO CONFORM TO WEBER COUNTY STANDARDS AND SPECIFICATIONS.

SCALE: 1" = 20'  
DATE: AUGUST, 2012  
DESIGN: TMN/SCC  
DRAWN: SCC  
CHECKED: TMN

REVISIONS	DESCRIPTION	DATE

DWG.: SEE PLOT STAMP AT LEFT



WOP WOM LLC  
EDEN CENTER  
UTILITY PLAN  
EDEN CITY, WEBER COUNTY, UTAH

**Gardner Engineering**  
PLANNING  
CIVIL ENGINEERING  
LAND SURVEYING  
ALTERNATIVE ENERGY

5875 South Adams Ave. Parkway, Suite 200 • Ogden, UT 84405  
Phone (801) 476 0202 • Fax (801) 476-0066