

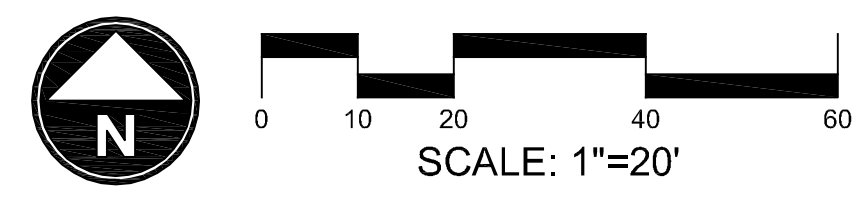
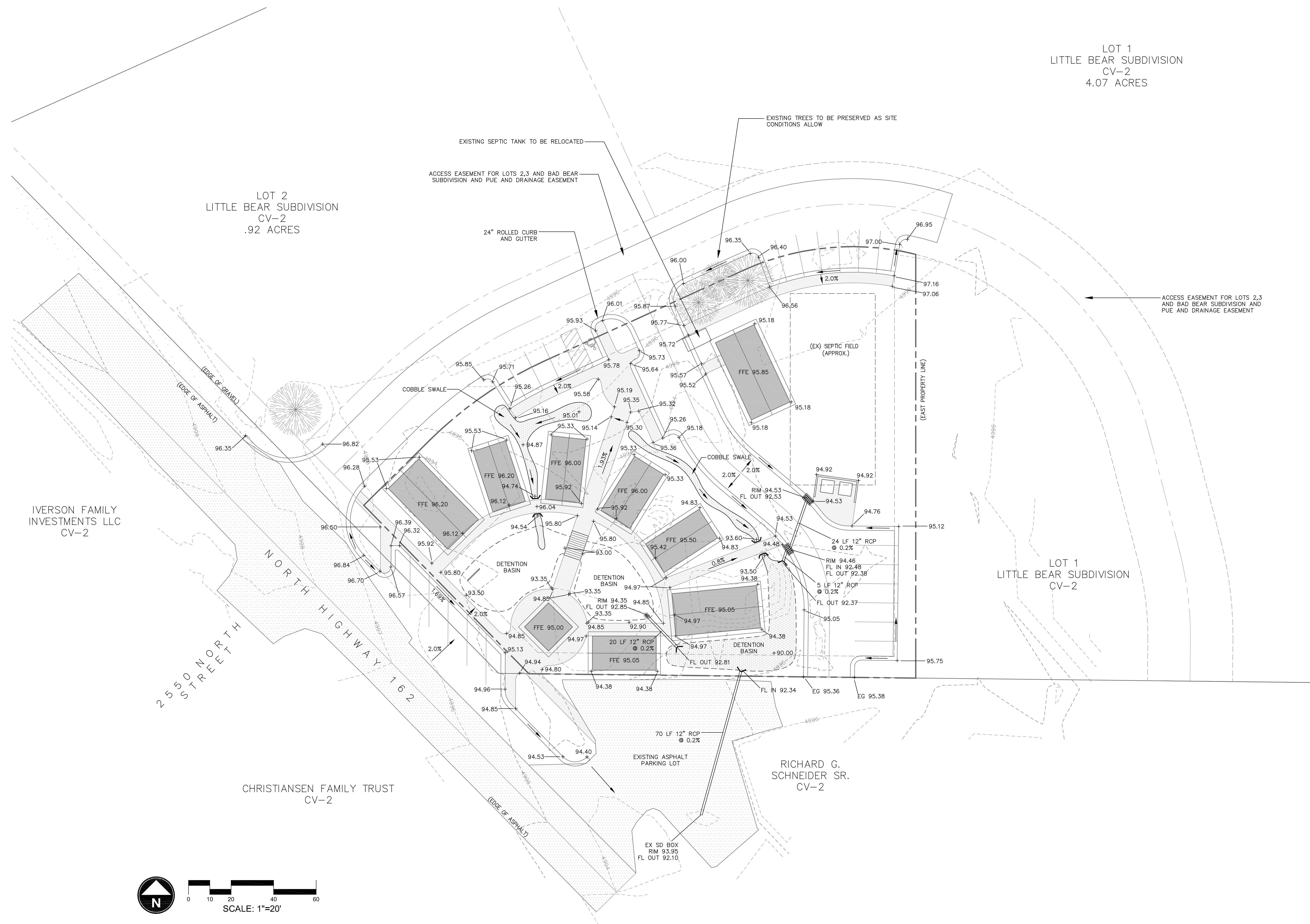
LOT 1  
LITTLE BEAR SUBDIVISION  
CV-2  
4.07 ACRES

LOT 2  
LITTLE BEAR SUBDIVISION  
CV-2  
.92 ACRES

IVERSON FAMILY  
INVESTMENTS LLC  
CV-2

CHRISTIANSEN FAMILY TRUST  
CV-2

RICHARD G.  
SCHNEIDER SR.  
CV-2



|                 |                       |            |           |          |
|-----------------|-----------------------|------------|-----------|----------|
| SCALE: 1" = 20' | DATE: SEPTEMBER, 2011 | DESIGN: EL | DRAWN: EL | CHECKED: |
| REVISIONS       | DESCRIPTION           |            |           |          |
| DATE            |                       |            |           |          |
|                 |                       |            |           | DWG:     |

WOP WOM LLC  
EDEN CENTER

GRADING + DRAINAGE PLAN  
EDEN CITY, WEBER COUNTY, UTAH

**Gardner Engineering**

PLANNING  
CIVIL ENGINEERING  
LANDSCAPE ARCHITECTURE  
ALTERNATIVE ENERGY

6875 South Adams Ave, Parkway, Suite 200 • Ogden, UT 84405  
Phone (801) 476-0232 • Fax (801) 476-0966