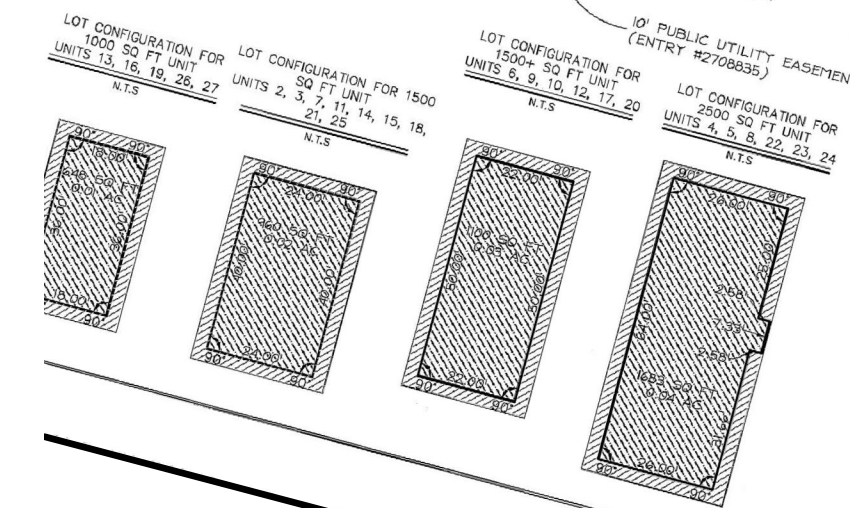


LEGEND

- S TC
- FOL
- CAF
- SET I
- STAM
- PRIVA
- EASEME
- LIMITED
- PRUD LOT
- COMMON ARE 100.845 2.32 AC
- COMMON ARE 95.306 2.19 AC

CURVE	LENGTH	RADIUS	DELTA	LONG CHORD	LENGTH
C89	100.29'	300.00'	19°09'16"	N 70°47'17" E	99.83'
C90	22.75'	393.15'	3°18'56"	S 85°44'45" W	22.75'
C91	29.59'	10.00'	169°31'14"	N 9°50'10" W	19.92'
C92	34.76'	30.00'	66°23'10"	S 62°20'24" W	32.85'
C93	100.00'	267.82'	21°23'37"	N 82°56'30" E	99.42'
C94	187.90'	1000.00'	10°45'58"	S 76°42'19" W	187.68'
C95	100.00'	426.15'	13°26'42"	S 88°48'39" W	99.77'
C96	80.91'	250.00'	18°32'34"	N 80°55'36" E	80.56'
C97	100.29'	300.00'	19°09'16"	N 70°47'17" E	99.83'
C98	156.49'	200.00'	44°49'50"	N 38°47'45" E	152.53'
C99	78.37'	200.00'	22°27'08"	S 27°36'24" W	77.87'
C100	94.44'	150.00'	36°05'29"	S 56°52'43" W	92.93'
C101	86.20'	75.00'	65°51'16"	N 83°18'11" E	81.54'
C102	64.82'	283.00'	13°07'24"	S 76°42'19" W	64.65'
C103	181.70'	967.00'	10°45'58"	S 56°52'43" W	181.44'
C104	110.23'	175.00'	36°08'29"	S 33°24'33" W	108.42'
C105	42.60'	225.00'	10°50'51"	S 21°39'02" W	42.53'
C106	41.39'	225.00'	10°32'25"	S 21°39'02" W	41.33'
C107	97.58'	175.00'	31°56'50"	N 33°48'40" E	96.32'
C108	91.93'	275.00'	19°09'16"	N 70°47'17" E	91.51'
C109	78.74'	125.00'	36°05'29"	S 56°52'43" W	77.44'
C110	101.09'	100.00'	46°46'38"	N 52°02'08" E	101.09'
C111	10.07'	3056.76'	1°53'41"	S 85°24'51" E	77.79'
C112	26.77'	175.00'	5°54'56"	N 35°32'30" E	18.06'
C113	34.90'	283.00'	5°25'09"	N 74°01'54" E	26.76'
C114	4.45'	175.00'	11°25'34"	N 55°24'52" E	34.84'
C115	4.18'	225.00'	1°03'53"	N 17°06'33" E	4.45'
C116				S 27°27'11" W	4.18'



SCALE
 HORIZONTAL: 1" = 40'
 VERTICAL: 1" = 20'

Sheet 2 of 2

NIV5



RECORDED #
 REQUESTED AND FILED AT THE
 OFFICE OF THE COUNTY CLERK
 WEBER COUNTY, UTAH
 ENTRY NO. 2520293
 DATE: 14-NOV-2016 TIME: 1:33
 BOOK: 80 PAGE: 1