

Exhibit A

Basis for Issuance of Conditional Use Permit

That the proposed use of the particular location is necessary or desirable to provide a service or facility which will contribute to the general well being of the community:

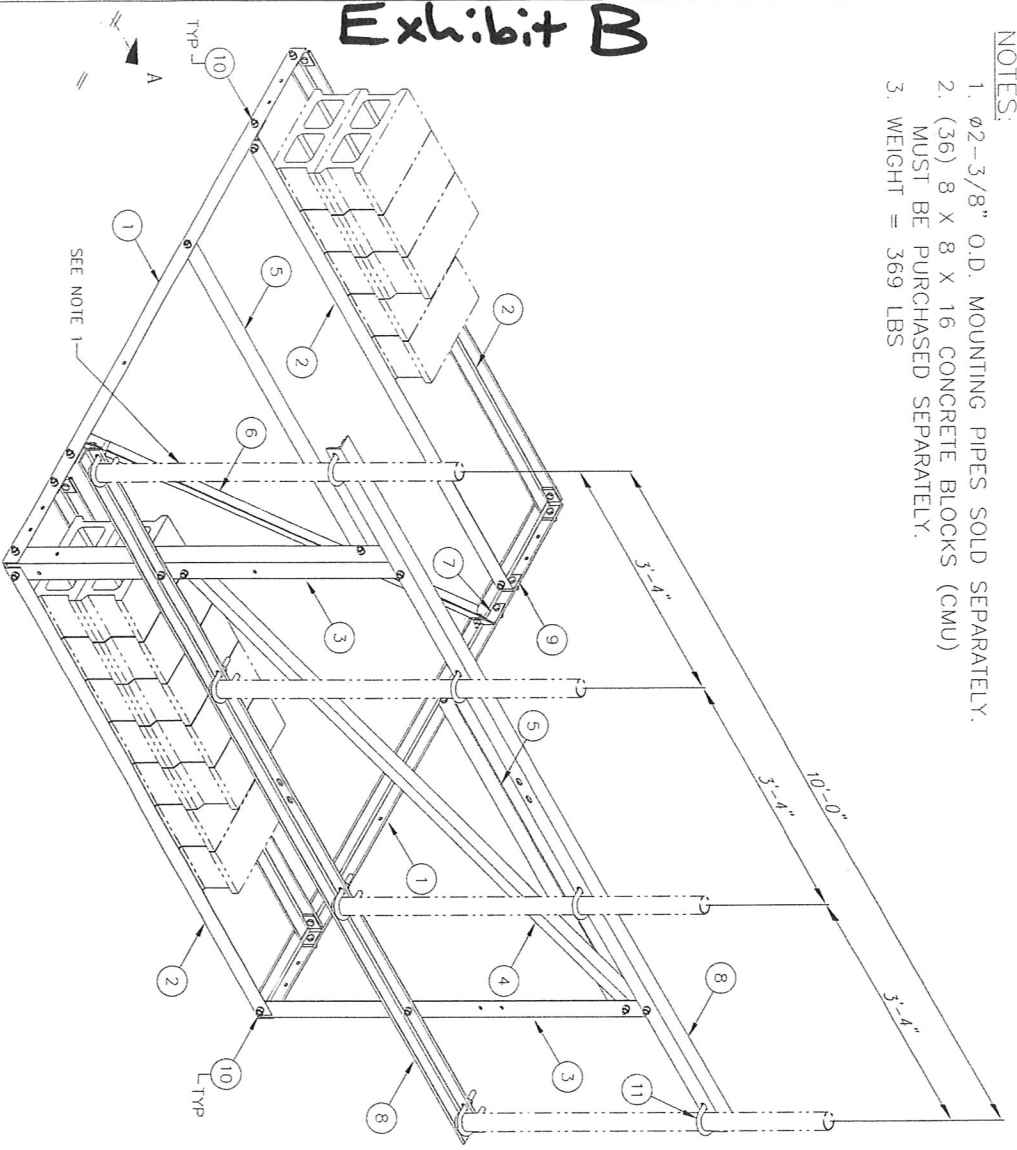
Questions From 22C4:

- 1- This site will have no detrimental affect on the surroundings or the community, there are no lights, noise, odors, vibration, dust, smoke.
- 2- Per Digis's interpretation of the requirements for a conditional use permit we meet the criteria.

That such use will not, under the circumstances of the particular case and the conditions imposed, be detrimental to the health, safety and general welfare of persons nor injurious to property or improvements in the community, but will be compatible with and complimentary to the existing surrounding uses, buildings and structures when considering traffic generation, parking, building design and location, landscaping and signs:

Exhibit B

- NOTES:
1. $\phi 2-3/8"$ O.D. MOUNTING PIPES SOLD SEPARATELY.
 2. (36) 8 X 8 X 16 CONCRETE BLOCKS (CMU) MUST BE PURCHASED SEPARATELY.
 3. WEIGHT = 369 LBS



ISOMETRIC VIEW

THIS DOCUMENT CONTAINS PROPRIETARY DATA
 INFORMATION OF THE U.S. GOVERNMENT
 ALL DIMENSIONS ARE IN INCHES U.S.S.
 TOLERANCES UNLESS OTHERWISE SPECIFIED:
 X = ±.06 ANGLES ±.7°
 XX = ±.03 FRACTIONS ±1/32
 XXX = ±.010
 REMOVE BURNS AND BREAK EDGES .005

REVISED BY	ACG
DATE	02/16/10
SCALE	OF 2
STANDARD	ASB
FIGURE	GAIV A123

PROJECT NAME: WS-NPRF10-R
 DESCRIPTION: Non-Penetrating Roof Frame, 10'-6" (3.2m)
 DRAWING TYPE: Assembly Drawing
 DRAWING NUMBER: 313141

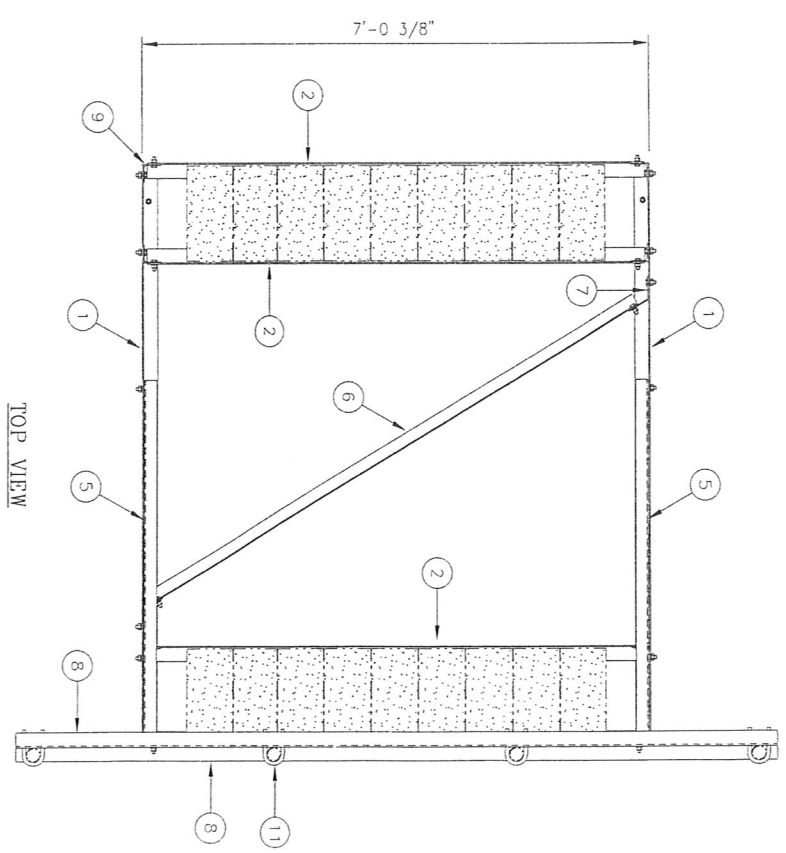
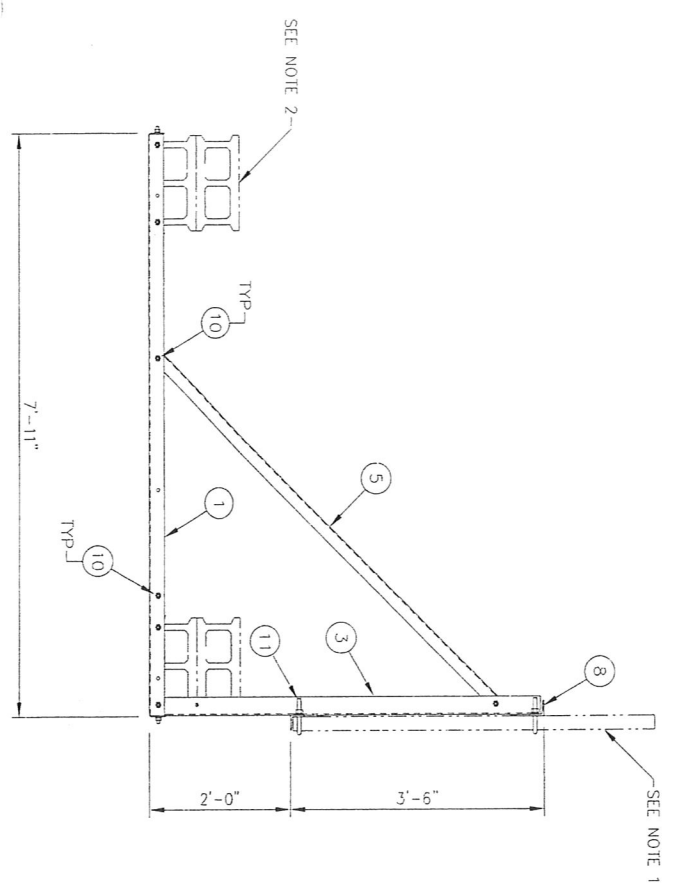


REVISIONS			
REV	ECO	DESCRIPTION	BY DATE
A	MTW	INITIAL RELEASE	ACG 02/16/10

Parts List

ITEM	DESCRIPTION	QTY
1	ANGLE, SIDE	2
2	ANGLE, BALLAST	4
3	ANGLE, FRONT	2
4	ANGLE, FRONT DIAGONAL	1
5	ANGLE, SIDE DIAGONAL	2
6	ANGLE, BOTTOM DIAGONAL	1
7	BENT PLATE	2
8	ANGLE, PIPE MOUNT 10'	2
9	ANGLE, CORNER	6
10	1/2" X 1-1/2" GALV BOLT KIT (A325)	30
11	5/8 X 2-1/2" X 4" GALV U-BOLT KIT	8

REVISIONS		DESCRIPTION	BY	DATE
REV.	ECO	INITIAL RELEASE	ACG	02/16/10
A	MTW			



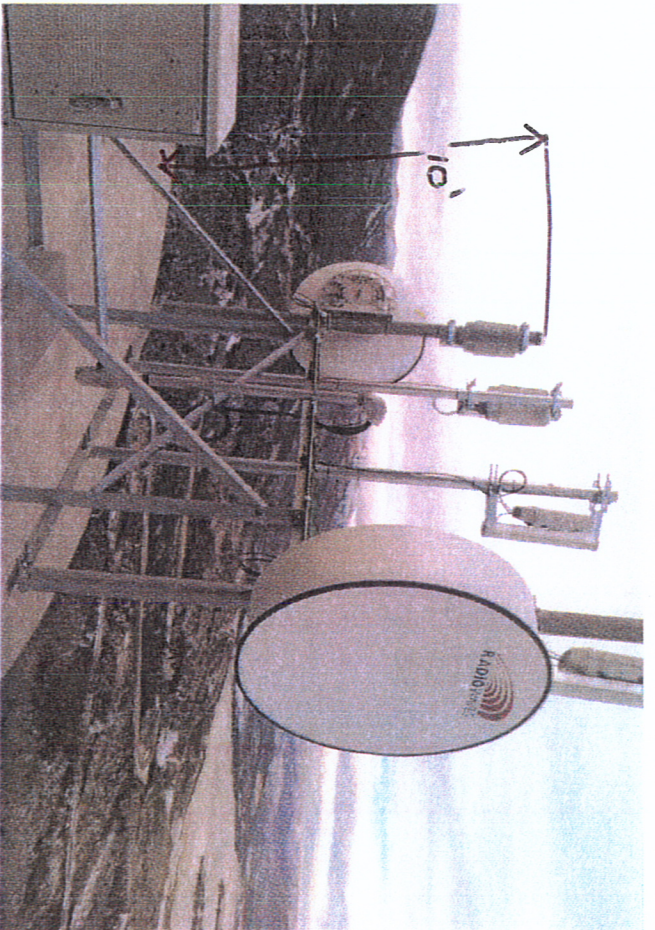
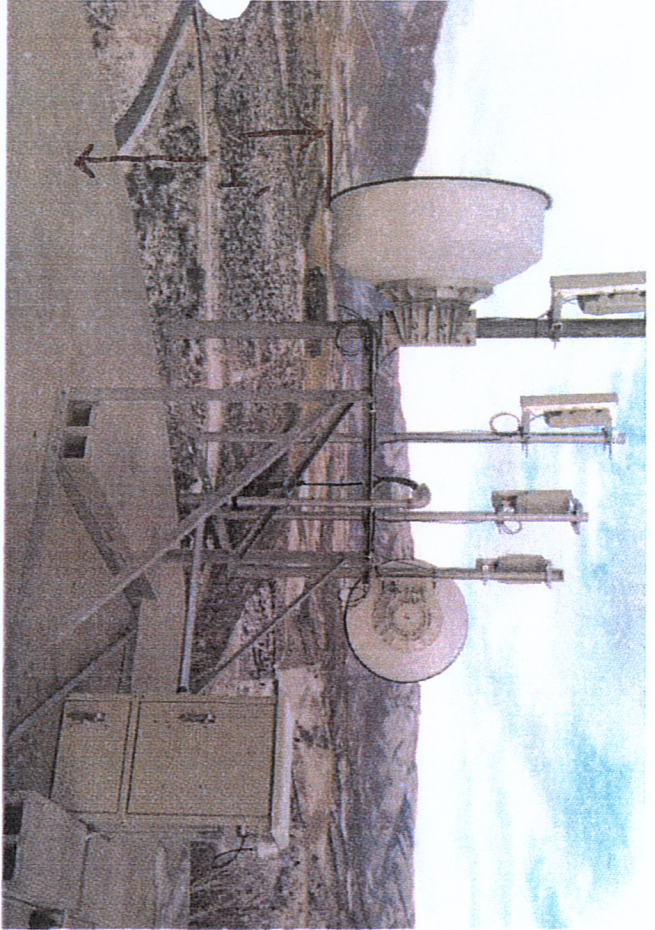
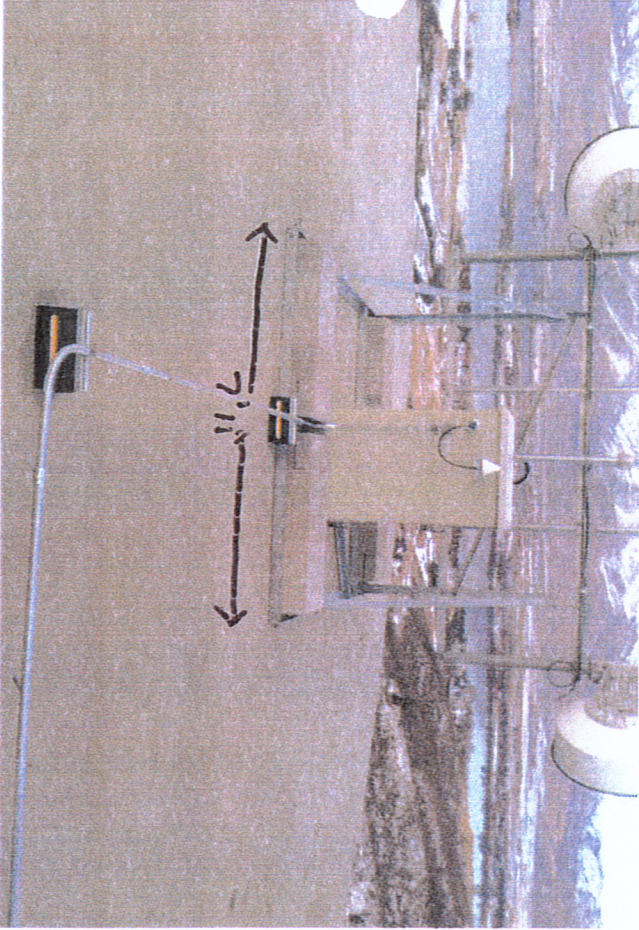
THIS DOCUMENT CONTAINS PROPRIETARY DATA
 REPRODUCTION OR USE OF ANY PART THEREOF
 MAY BE MADE EXCEPT BY WRITTEN PERMISSION
 ALL DIMENSIONS ARE IN INCHES U.O.S.
 TOLERANCES UNLESS OTHERWISE SPECIFIED:
 .XX = ±.06 ANGLES ±2'
 .XXX = ±.010 FRACTIONS ±1/32
 REMOVE BURS AND BREAK EDGES .005
 DO NOT SCALE THIS PRINT

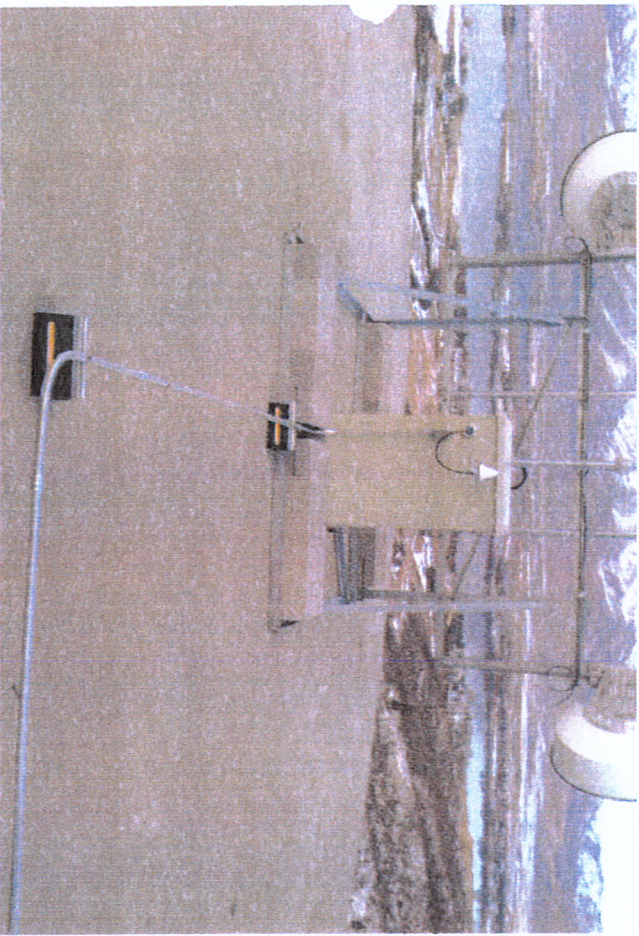
DATE	02/16/10
SCALE	2 OF 2
SCALE	NTS
STANDARD	A36
DESIGN	Gov A123

PROJECT NUMBER	WS-NPRF10-R
DESCRIPTION	Non-Penetrating Roof Frame, 10'-6" (3.2m) pipe mounts not included
DRAWING TYPE	Assembly Drawing
DRAWING NUMBER	313141



Exhibit C





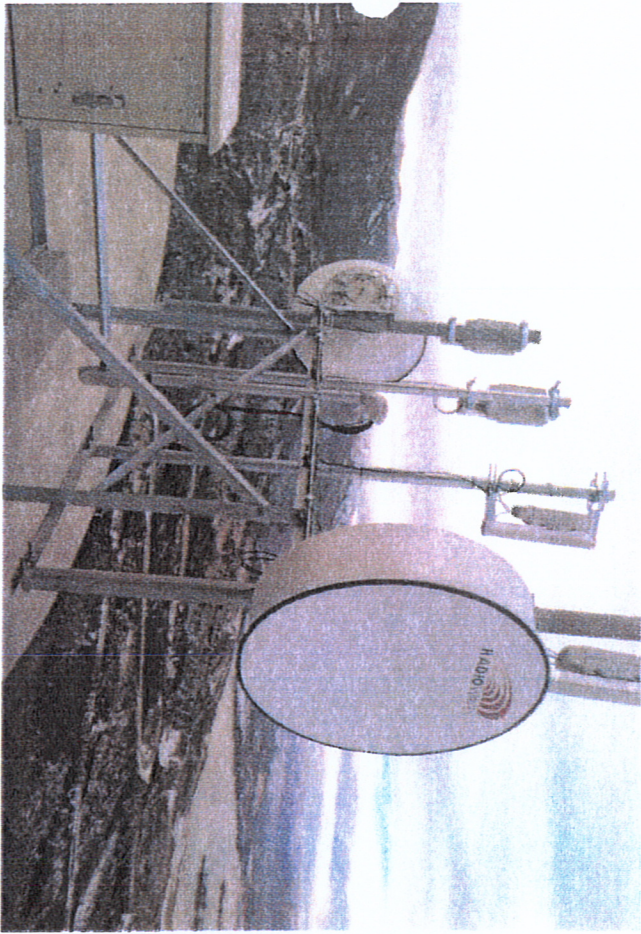


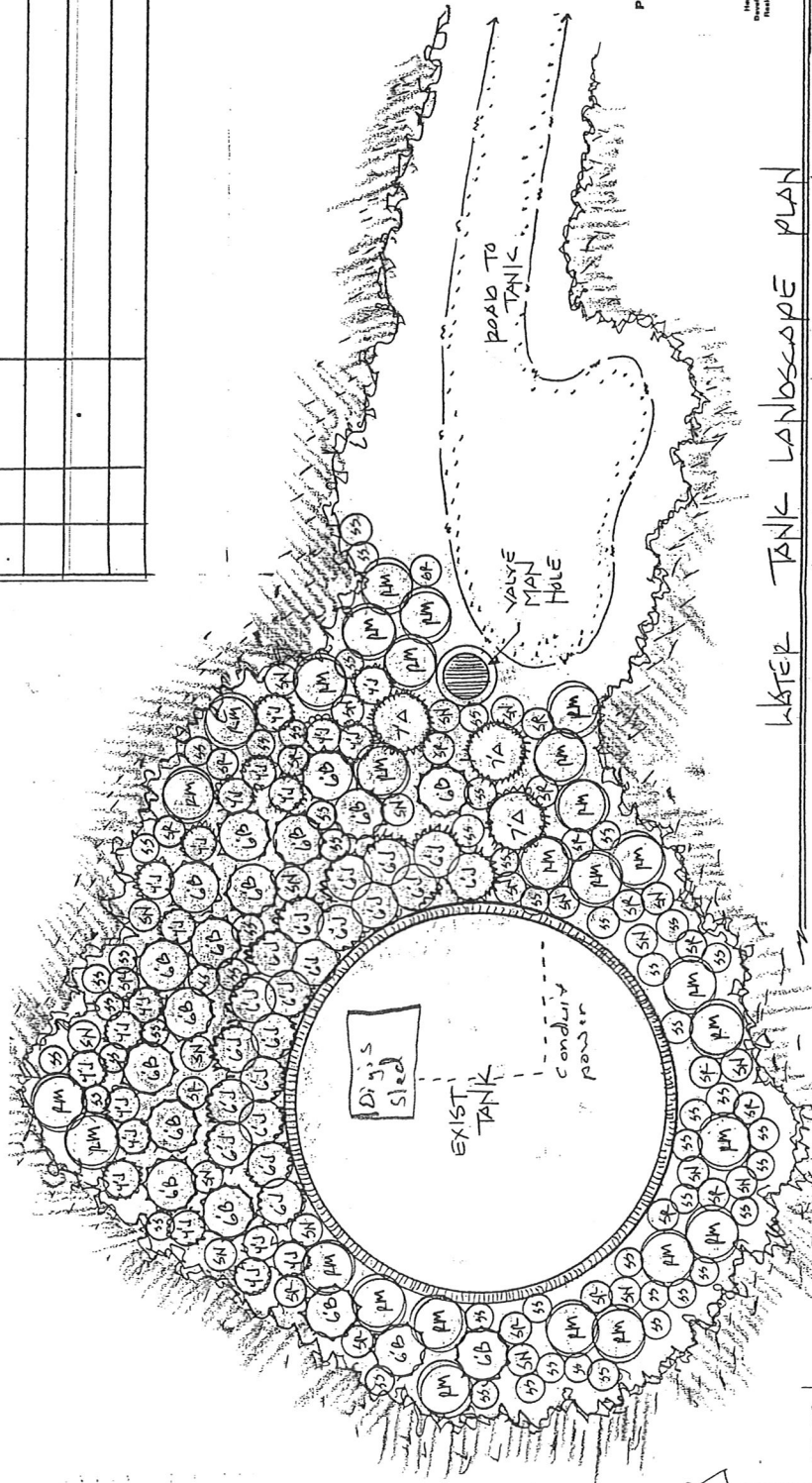
Exhibit D

NOTE - ALL PLANT TO BE BACKFILLED WITH SOIL DEP. NATIVE SOIL MIX
 80-50 LB BAGS EQUAL MIX TO ALL PLANTS

NOTE - AROUND ALL PLANTS HYDROSEED 60 LBS CABIN MIX
 WITH TAUK BINDER
 50 LBS SHEEP FESCUE
 35 LBS CHESTNUT WHEAT
 15 LBS STREAM BANK FESCUE

NOTE - CONTRACTOR - DEVELOPER & LANDSCAPE ARCHITECT
 TO MEET ± APRIL 15 - 2007 FOR SPRING INSPECTION
 TO REHYDROSEED ANY EROSION PROBLEM AREAS
 & TO REPLACE ANY PLANTS THAT HAVE DIED

#	SYM	SIZE	PLANT NAME	NOTE
17	CB	5'x7'	SPRUCE - MIX BLUE SPRUCE & BLACK HILLS	
3	7A	7' 8B	PINE - SUBSTRAN & LEWIS POLE & LUMBER	
20	6J	6' 8B	ROCKY MOUNTAIN JUNIPER & UTAH JUNIPER	
20	7J	4' 5 1/2'	ROCKY MOUNTAIN JUNIPER & UTAH JUNIPER	
20	PM	10'x10'x15'	NATIVE MAPLE MIX ROCKY MOUNTAIN & BIGTOOTH	
20	SR	5'x1'	SERVICE BERRY - SASKATOON & UTAH	
20	SN	5'x1'	SNOW BERRY & ALGUNA CURRANT	
50	SS	5'x1'	SUNAC - SKUNK - SMOOTH & STRAGGLING	



Paul H. Keeler - Landscape Architect



Desert Land Design, Inc.
 Interior Planning & Remodeling Design
 Residential Landscape Architecture
 801-701-8244

WATER TANK LANDSCAPE PLAN

THE LEGENDS AT HAINKINS CREEK

NORTH
 SCALE 1" = 10'