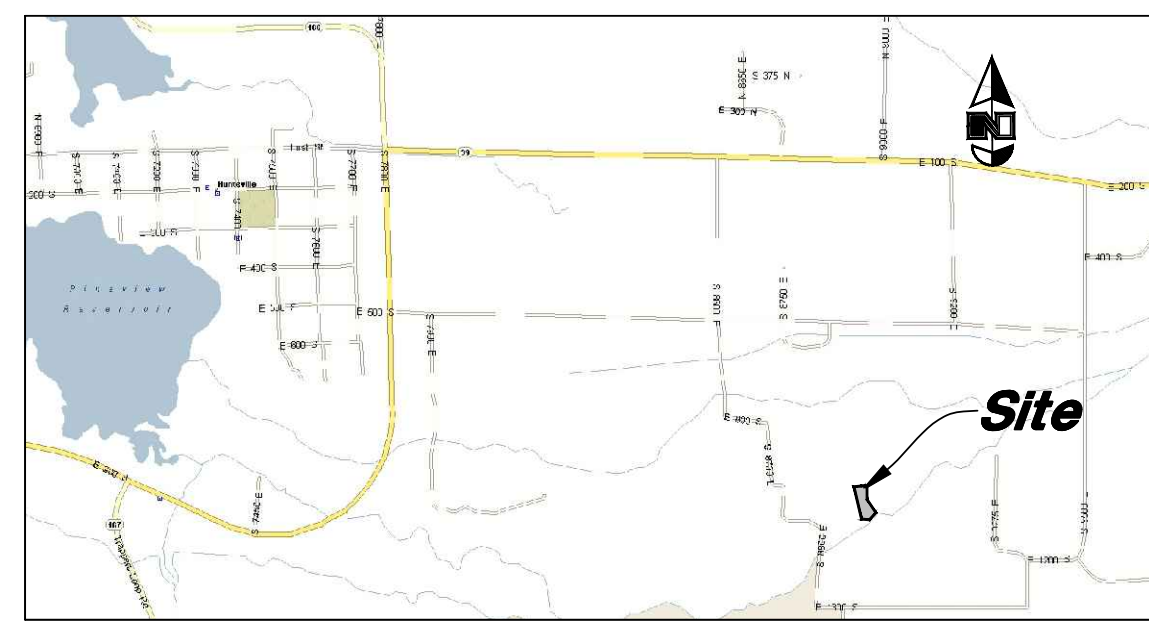


# River Ranch - 1st Amendment

Amending Lot 4 River Ranch  
 A part of the Northwest Quarter of Section 21, T6N, R2E, SLB&M,  
 U.S. Survey  
 Huntsville District, Weber County, Utah  
 May 2017



VICINITY MAP  
(Not to Scale)

### WEBER COUNTY PLANNING COMMISSION APPROVAL

This is to certify that this subdivision plat was duly approved by the Weber County Planning Commission.  
 Signed this \_\_\_\_\_ day of \_\_\_\_\_, 2017.

\_\_\_\_\_  
 Chairman, Weber County Planning Commission

### WEBER COUNTY SURVEYOR

I hereby certify that the Weber County Surveyor's Office has reviewed this plat for mathematical correctness, section corner data, and for harmony with lines and monuments on record in County Offices. The approval of this plat by the Weber County Surveyor does not relieve the licensed Land Surveyor who executed this plat from the responsibilities and/or liabilities associated therewith.  
 Signed this \_\_\_\_\_ day of \_\_\_\_\_, 2017.

\_\_\_\_\_  
 Weber County Surveyor

### WEBER-MORGAN HEALTH DEPARTMENT

I hereby certify that the soils, percolation rates, and site conditions for this subdivision have been investigated by this office and are approved for on-site wastewater disposal systems.  
 Signed this \_\_\_\_\_ day of \_\_\_\_\_, 2017.

\_\_\_\_\_  
 Weber County Surveyor

### WEBER COUNTY ENGINEER

I hereby certify that the required public improvement standards and drawings for this subdivision conform with County standards and the amount of the financial guarantee is sufficient for the installation of these improvements.  
 Signed this \_\_\_\_\_ day of \_\_\_\_\_, 2017.

\_\_\_\_\_  
 Weber County Engineer

### WEBER COUNTY ATTORNEY

I have examined the financial guarantee and other documents associated with this subdivision plat, and in my opinion they conform with the County Ordinance applicable thereto and now in force and effect.  
 Signed this \_\_\_\_\_ day of \_\_\_\_\_, 2017.

\_\_\_\_\_  
 Weber County Attorney

### WEBER COUNTY COMMISSION ACCEPTANCE

This is to certify that this subdivision plat, the dedication of streets and other public ways and financial guarantee of public improvements associated with this subdivision, thereon are hereby approved and accepted by the commissioners of Weber County, Utah.  
 Signed this \_\_\_\_\_ day of \_\_\_\_\_, 2017.

\_\_\_\_\_  
 Chairman, Weber County Commission

Attest: \_\_\_\_\_  
 Title: \_\_\_\_\_

### FLOOD ZONE

The South part of this Property falls within Zone 'AE' and the North part of this Property falls within Zone 'X' Unshaded as shown on the Flood Insurance Rate Map, Community Panel No. 49057C0476F dated June 2, 2015 and on Community Panel No. 4901870476F dated June 2, 2015.

Zone AE - area of 100 year flood; base flood elevations and flood hazard factors not determined.  
 Zone X - areas determined to be outside the 0.2% annual chance floodplain (no shading)

### NARRATIVE

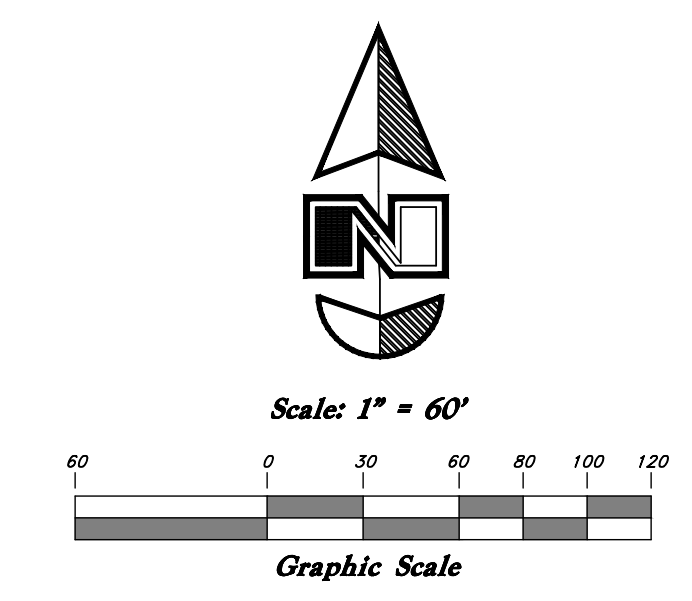
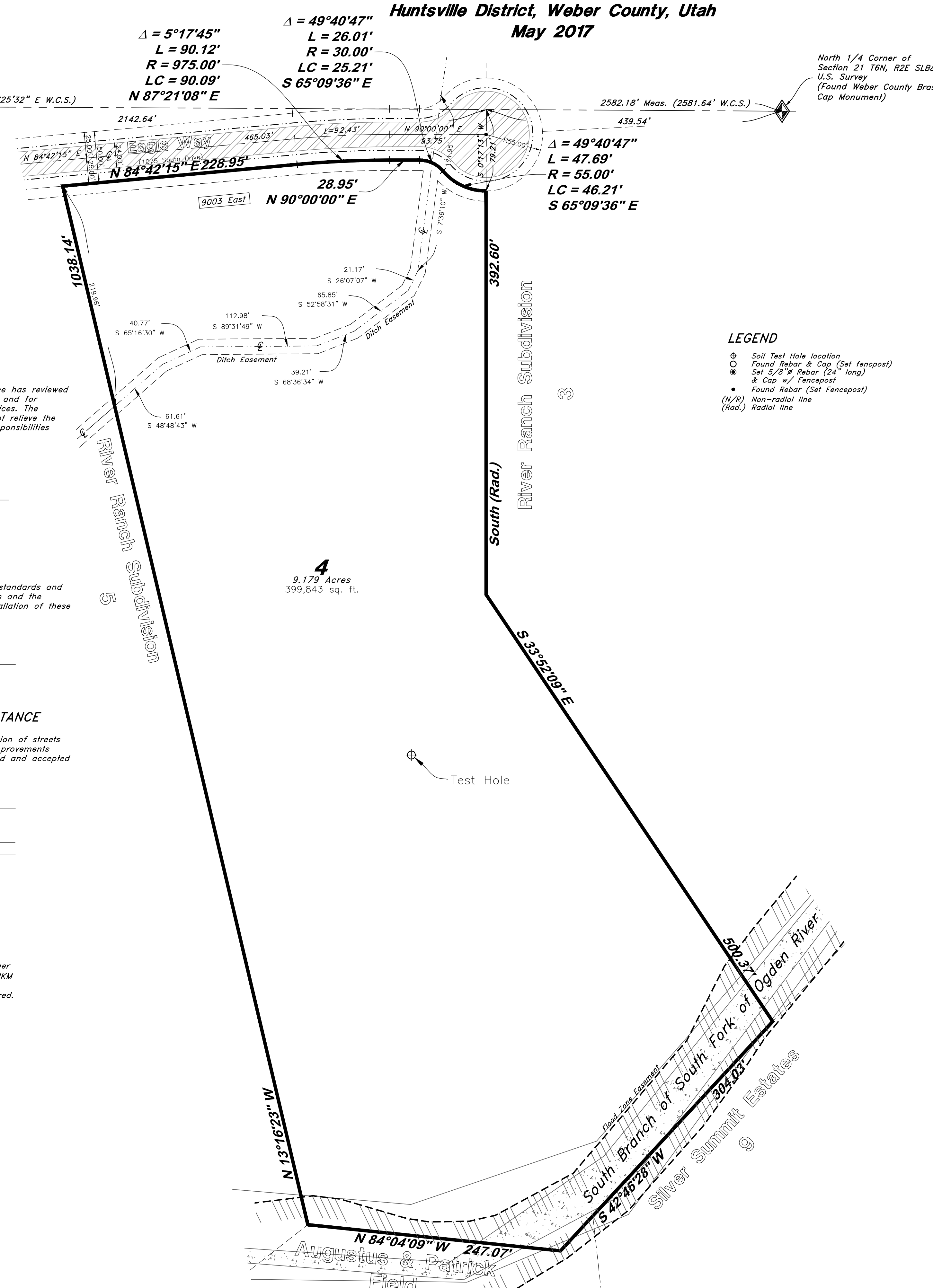
This Plat and survey was requested by Mr. Patrick Bonkemeyer in order to Amend one (1) residential lot. The original survey was done in 1984 for BKM Agricultural Development.

A line bearing S 89°25'32" E between Southwest corner and South 1/4 was used as the basis of bearing. The BKM Survey 1984 was honored and the basis of bearing has been rotated 0.2875 clockwise to match the survey bearing. Corners were monumented as depicted on this plat.

### NOTE:

10' Utility and Drainage Easements each side of property line as indicated by dashed lines, or as otherwise shown.

**GREAT BASIN ENGINEERING INC.**  
 5746 SOUTH 1475 EAST OGDEN, UTAH 84403  
 MAIN (801)394-4515 S.L.C. (801)521-0222 FAX (801)392-7544  
 WWW.GREATBASINENGINEERING.COM



### SURVEYOR'S CERTIFICATE

I, Jason T. Felt, do hereby certify that I am a Registered Professional Land Surveyor in the State of Utah, and that I hold Certificate No. 6242920 in accordance with Title 56, Chapter 22, of the Professional Engineers and Land Surveyors Licensing Act. I also certify that I have completed a survey of the property described hereon in accordance with Section 17-23-17 and that I have verified all measurements shown hereon this plat of River Ranch - 1st Amendment in Weber County, Utah and that it has been correctly drawn to the designated scale and is a true and correct representation of the following description of lands included in said subdivision, based on data compiled from records in the Weber County Recorder's Office and all lots meet the requirements of the Land Use Code WCO 106-1-8(c)(1). Monuments have been found or placed as represented on this plat.

Signed this \_\_\_\_\_ day of \_\_\_\_\_, 2017.

9239283  
 License No. Jason T Felt

### BOUNDARY DESCRIPTION

All of Lot 4 River Ranch, more particularly described as follows:  
 A part of the Northwest Quarter of Section 21, Township 6 North, Range 2 East, Salt Lake Base and Meridian, U.S. Survey:  
 Beginning at the Northwest Corner of Lot 3, said River Ranch Subdivision, Huntsville District, Weber County, Utah, which is 439.54 feet North 89°42'47" West along the Section line and 79.21 feet South 0°17'13" West from the North Quarter corner of said Section 21; running thence two (2) courses along the West line of said Lot 3 as follows: (1) due South 392.60 feet and (2) South 33°52'09" East 500.37 feet to the North line of Lot 9, Silver Summit Estates, Huntsville District, Weber County, Utah; thence South 42°46'28" West 304.03 feet along said North line; thence North 84°04'09" West 247.07 feet to the Southeast Corner of Lot 5, said River Ranch Subdivision; thence North 13°16'23" West 1038.14 feet along said East line to the South Right of Way line of Eagle Way; thence along said Right of Way the line following five (5) courses: (1) North 84°42'15" East 228.95 feet to a point of curvature, (2) Northeastly along the arc of a 975.00 foot radius curve to the right a distance of 90.12 feet (Central Angle equals 5°17'45" and Long Chord bears North 87°21'08" East 90.09 feet), (3) due East 28.95 feet to a point of curvature, (4) Southeastly along the arc of a 50.00 foot radius curve to the right a distance of 26.01 feet (Central Angle equals 49°40'47" and Long Chord bears South 65°09'36" East 25.21 feet) to a reverse curvature, and (5) Southeastly along the arc of a 55.00 foot radius curve to the left a distance of 47.69 feet (Central Angle equals 49°40'47" and Long Chord bears South 65°09'36" East 46.21 feet) to the point of beginning.  
 Contains 9.179 acres

### OWNER'S DEDICATION

I the undersigned owner of the herein described tract of land, do hereby set apart and name said tract River Ranch - 1st Amendment, and do hereby grant and dedicate a perpetual right and easement over, upon and under the lands designated hereon as public utility, storm water detention ponds, drainage easements and canal maintenance easements, the same to be used for the installation, maintenance and operation of public utility service lines, storm drainage facilities, irrigation canals or for the perpetual preservation of water drainage channels in their natural state whichever is applicable as may be authorized by the governing authority, with no buildings or structures being erected within such easements.  
 Signed this \_\_\_\_\_ day of \_\_\_\_\_, 2017.

Patrick H. Bonkemeyer - Trustee Rayleen T. Bonkemeyer - Trustee

### ACKNOWLEDGMENT

State of Utah } ss  
 County of Weber }  
 The foregoing instrument was acknowledged before me this \_\_\_\_\_ day of \_\_\_\_\_, 20\_\_\_\_ by \_\_\_\_\_.  
 Residing At: \_\_\_\_\_ A Notary Public commissioned in Utah  
 Commission Number: \_\_\_\_\_  
 Commission Expires: \_\_\_\_\_ Print Name

WEBER COUNTY RECORDER  
 ENTRY NO. \_\_\_\_\_ FEE PAID \_\_\_\_\_  
 RECORDED \_\_\_\_\_ FILED FOR RECORD AND AT \_\_\_\_\_  
 IN BOOK \_\_\_\_\_ OF OFFICIAL RECORDS, PAGE \_\_\_\_\_ RECORDED FOR \_\_\_\_\_  
 WEBER COUNTY RECORDER  
 BY: \_\_\_\_\_ DEPUTY