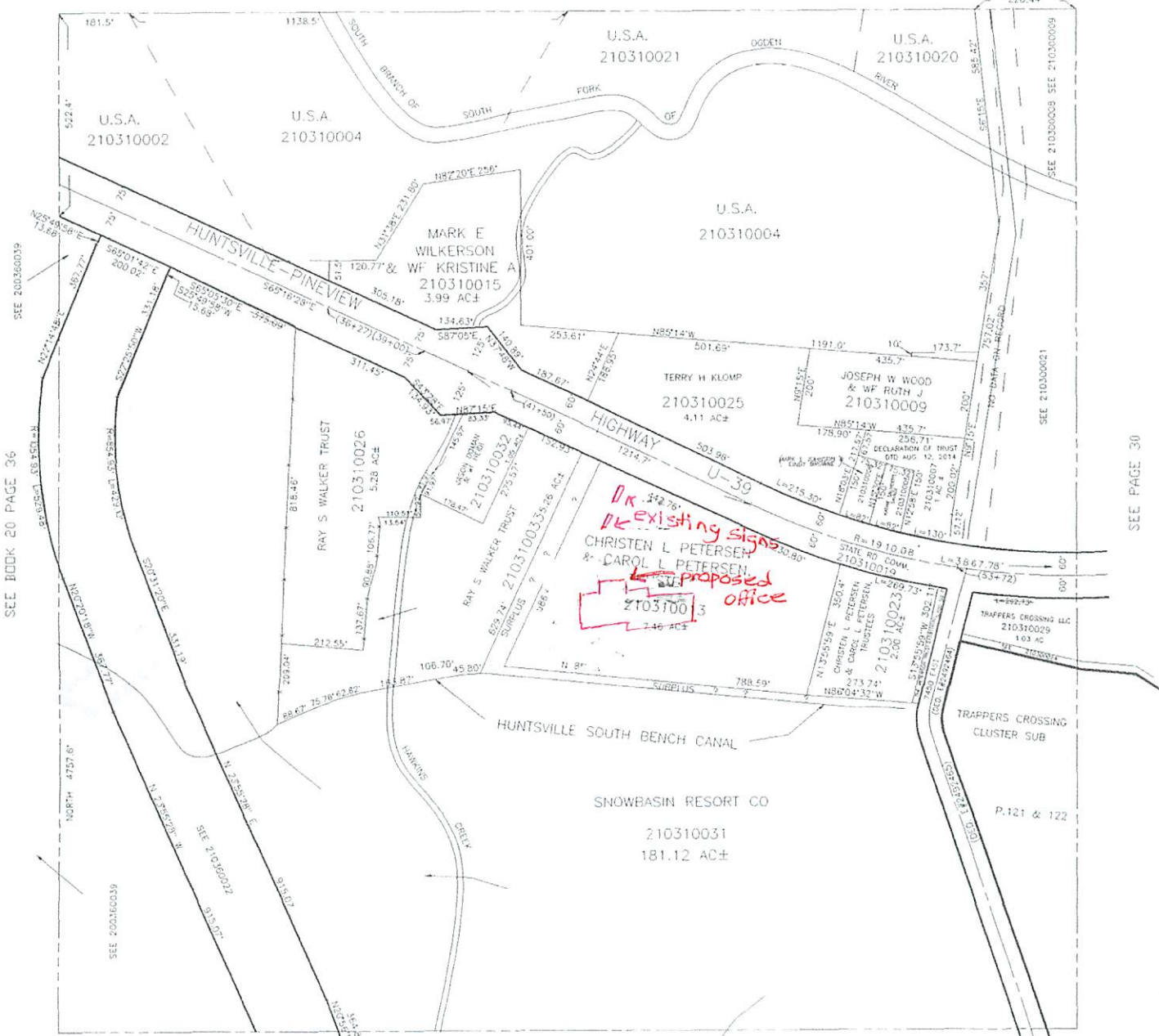


N.W. 1/4
SECTION 19, T.6N., R.2E., S.L.B. & M.
IN WEBER COUNTY
SCALE 1" = 200'

TAXING UNIT: 318

SEE PAGE 27

3.34 CH
220.44'



SEE BOOK 20 PAGE 36

SEE PAGE 30

- Slip Printable
- LDS Youth Permission
- Slip
- Printable Parent
- Parent Guardian
- Parental Release Form
- LDS
- LDS Youth



Office in red

