

APPROVED

By Robert Whitlock at 2:01 pm, Sep 22, 2011

APPROVED

By Shane Tanner at 2:11 pm, Sep 22, 2011



SAL - PEERY CAMP



VERIZON WIRELESS
9656 SOUTH PROSPERITY ROAD
WEST JORDAN, UTAH 84088

TAEC

Technology Associates Engineering Corporation
TECHNOLOGY ASSOCIATES

UTAH MARKET OFFICE
9847 SOUTH 500 WEST
SANDY, UTAH 84070

NORTHWEST REGIONAL OFFICE
4800 SW MEADOWS ROAD, SUITE 300
LAKE OSWEGO, OREGON 97035

DRAWN BY: JAY C

CHECKED BY: DOUG K

SITE INFORMATION

APPLICANT:
VERIZON WIRELESS
9656 SOUTH PROSPERITY ROAD
WEST JORDAN, UTAH 84088

SITE ADDRESS:
SOUTHWEST QUARTER OF SECTION 24, T6N, R1W
OGDEN CANYON ROAD
OGDEN, UTAH 84401

LATITUDE AND LONGITUDE:
N 41°14'22.76", W 111°54'19.63"

ZONING JURISDICTION:
WEBER COUNTY

PROJECT DESCRIPTION:
VZW IS PROPOSING TO CONSTRUCT AN UNMANNED COMMUNICATIONS FACILITY CONSISTING OF ANTENNAS MOUNTED TO A NEW MONOPINE WITH EQUIPMENT LOCATED INSIDE A 11'-8" X 26' PREFABRICATED EQUIPMENT SHELTER

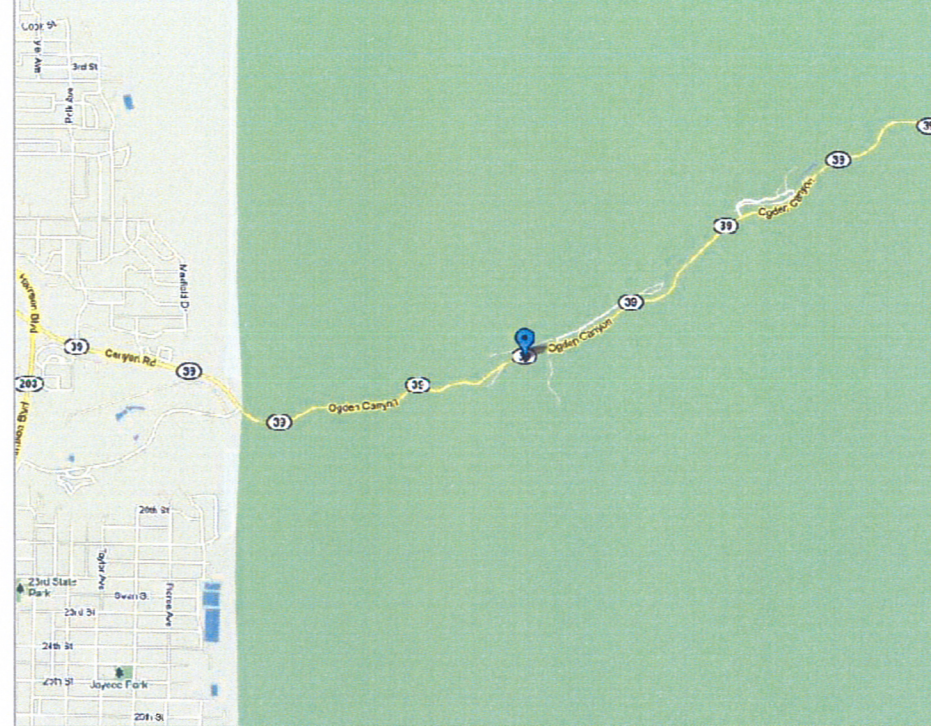
TYPE OF CONSTRUCTION:
PRE-FAB SHELTER, MONOPINE, AND ANTENNAS

HANDICAP REQUIREMENTS:
FACILITY IS UNMANNED AND NOT FOR HUMAN HABITATION. HANDICAP ACCESS REQUIREMENTS DO NOT APPLY

POWER COMPANY:
ROCKY MOUNTAIN POWER, 1-888-221-7070

TELEPHONE COMPANY:
QWEST, 1-800-244-1111

LOCATION MAP



DO NOT SCALE DRAWINGS

CONTRACTOR SHALL VERIFY ALL PLANS, AND EXISTING DIMENSIONS, AND CONDITIONS ON THE JOB SITE, AND SHALL IMMEDIATELY NOTIFY THE ENGINEER IN WRITING OF ANY DISCREPANCIES BEFORE PROCEEDING WITH THE WORK OR BE RESPONSIBLE FOR SAME

DRIVING DIRECTIONS

TAKE I-15 NORTH TO 12TH STREET EXIT IN OGDEN (APPROX 40 MILES). TURN EAST ON 12TH AND FOLLOW ROAD EAST TOWARD THE MOUNTAIN. CONTINUE UP THE CANYON APPROX 1 MILE. SITE IS ON THE RIGHT SIDE JUST WEST OF THE KILN AND TRAIL HEAD.

APPROVALS

VERIZON WIRELESS REPRESENTATIVE:
VERIZON WIRELESS RF ENGINEER:
TAIC SITE ACQUISITION:
TAIC CONSTRUCTION MANAGER:
SITE OWNER:

DRAWING INDEX

SHEET NO.	SHEET TITLE	REV	REV DATE
T100	TITLE SHEET, VICINITY MAP, GENERAL SITE INFORMATION	1	09.13.2011
SURV	SITE SURVEY	0	
C100	OVERALL SITE PLAN	1	09.13.2011
C101	ENLARGED SITE PLAN	1	09.13.2011
C200	SOUTHEASTERLY SITE ELEVATION	1	09.13.2011
C201	SOUTHWESTERLY SITE ELEVATION	1	09.13.2011
C202	ENLARGED SOUTHWESTERLY SITE ELEVATION	1	09.13.2011

CONTACT INFORMATION

SITE ACQUISITION:
TECHNOLOGY ASSOCIATES
9847 SOUTH 500 WEST
SANDY, UTAH 84070
CONTACT: DOUG KOFFORD
PHONE: 425-306-7886



UNDERGROUND SERVICE ALERT CALL 'BLUE STAKES OF UTAH', TOLL FREE 1-800-662-4111
THREE WORKING DAYS BEFORE YOU DIG

REV	DATE	DESCRIPTION
1	09.15.2011	MOVED LEASE AREA
0	08.24.2011	ZONING DRAWINGS

SAL - PEERY CAMP
SW SEC 24, T6N, R1W
OGDEN CANYON HWY
OGDEN, UTAH 84401
-- RAWLAND SITE --

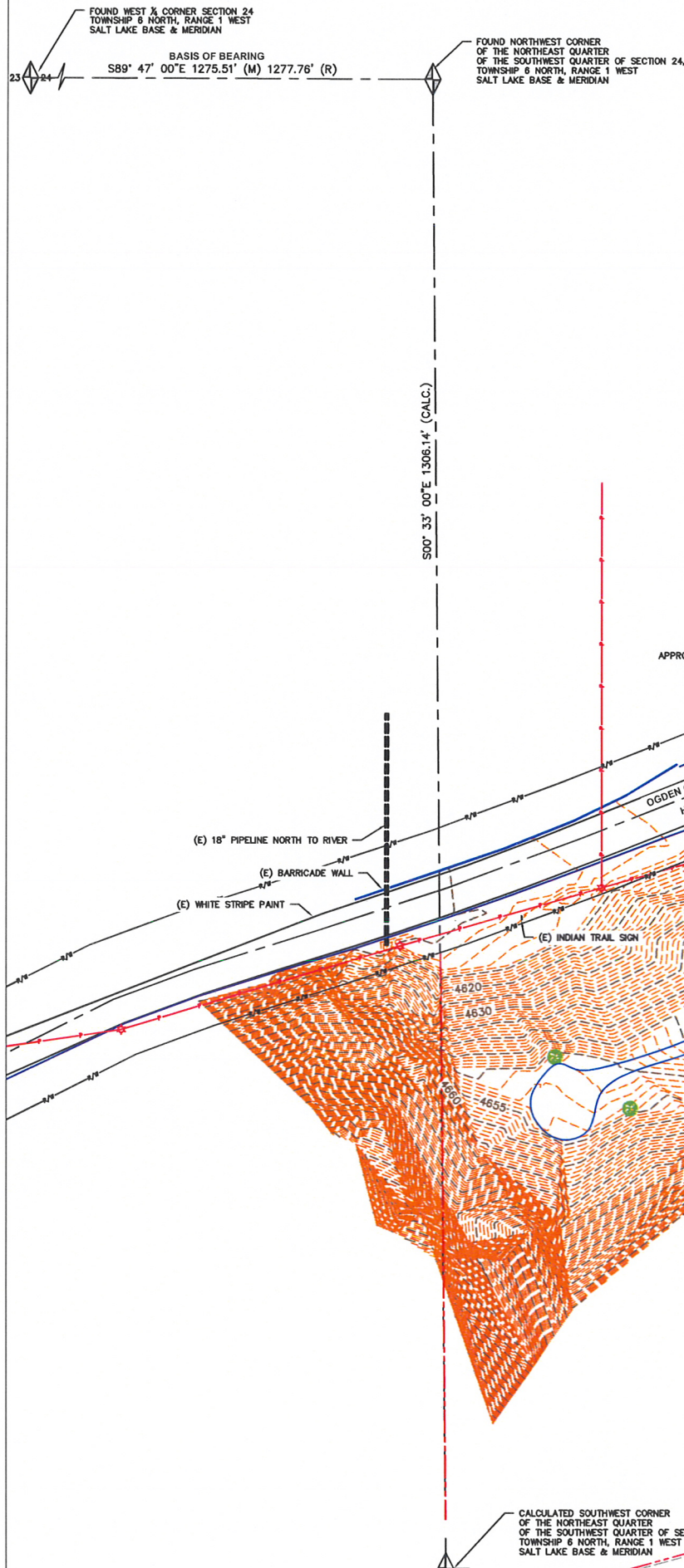
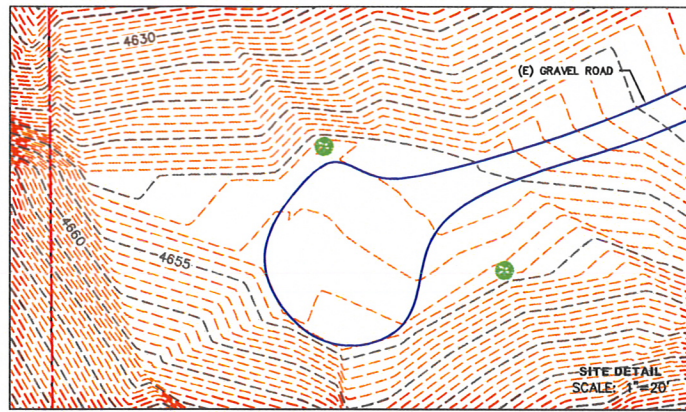
SHEET TITLE
TITLE SHEET
VICINITY MAP
GENERAL INFORMATION

SHEET NUMBER
T100

CERTIFICATE OF SURVEY:
 I, RICHARD W. MILLER, PROFESSIONAL LAND SURVEYOR, STATE OF UTAH, LICENSE NUMBER 155641, CERTIFY THAT I HAVE SUPERVISED A SURVEY ON THE GROUND AS SHOWN HEREON.

NARRATIVE:
 (1) THE PURPOSE OF THIS SURVEY IS TO LOCATE AND SURVEY A PROPOSED COMMUNICATIONS TOWER SITE.
 (2) THE BASIS OF BEARING USED FOR THIS SURVEY IS AS SHOWN ON THIS PLAT, FROM FOUND MONUMENTS AS LOCATED IN THE FIELD.
 (M) = MEASURED DISTANCE.
 (R) = RECORDED DISTANCE.

(3) TITLE REPORT ITEM #14 IS A ROCKY MOUNTAIN BELL TELEPHONE COMPANY EASEMENT THROUGH THE SOUTHWEST QUARTER OF SECTION 24, HOWEVER NO SPECIFIC DESCRIPTION FOR THIS EASEMENT IS DESCRIBED.



VERIZON WIRELESS
 9656 SOUTH PROSPERITY ROAD
 WEST JORDAN, UTAH 84088

T.A.E.C.
 Technology Associates Engineering Corporation
 TECHNOLOGY ASSOCIATES

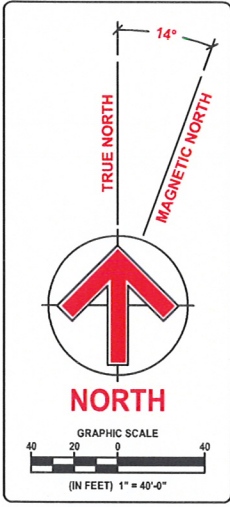
UTAH MARKET OFFICE
 9847 SOUTH 500 WEST
 SANDY, UTAH 84070

NORTHWEST REGIONAL OFFICE
 4800 SW MEADOWS ROAD, SUITE 300
 LAKE OSWEGO, OREGON 97035

SURVEY PREPARED BY:
 MILLER ASSOCIATES INC.
 3225 W. CALIFORNIA AVE., SUITE 202
 SALT LAKE CITY, UTAH 84104
 PHONE: 801-975-1083
 FAX: 801-975-1081

PROJECT NO:	11042
DRAWN BY:	JULIA W
CHECKED BY:	RICHARD M

REV	DATE	DESCRIPTION
0	04-25-2011	SITE SURVEY



INFORMATION FOR THE CENTER
 OF THE PROPOSED SITE

STATE PLANE COORDINATES - 110 83 FT.
 NORTHING = 3611298.96 EASTING = 1526926.58

GEODEIC COORDINATES - 1140 83
 LATITUDE = 11 41' 14.22" N
 LONGITUDE = W 111° 54' 19.63"

GROUND ELEVATION = 7100.88
 4651.33' A.M.S.L.

STATE OF UTAH, NORTH ZONE

SAL - PEERY CAMP
 SW SEC 24, T6N, R1W
 OGDEN CANYON HIGHWAY
 OGDEN, UTAH
 --- RAWLAND SITE ---

SHEET TITLE
 SITE SURVEY

SHEET NUMBER
 SURV

verizon
wireless

VERIZON WIRELESS
9656 SOUTH PROSPERITY ROAD
WEST JORDAN, UTAH 84088

TAEC

Technology Associates Engineering Corporation
TECHNOLOGY ASSOCIATES

UTAH MARKET OFFICE
9847 SOUTH 500 WEST
SANDY, UTAH 84070

NORTHWEST REGIONAL OFFICE
4800 SW MEADOWS ROAD, SUITE 300
LAKE OSWEGO, OREGON 97035

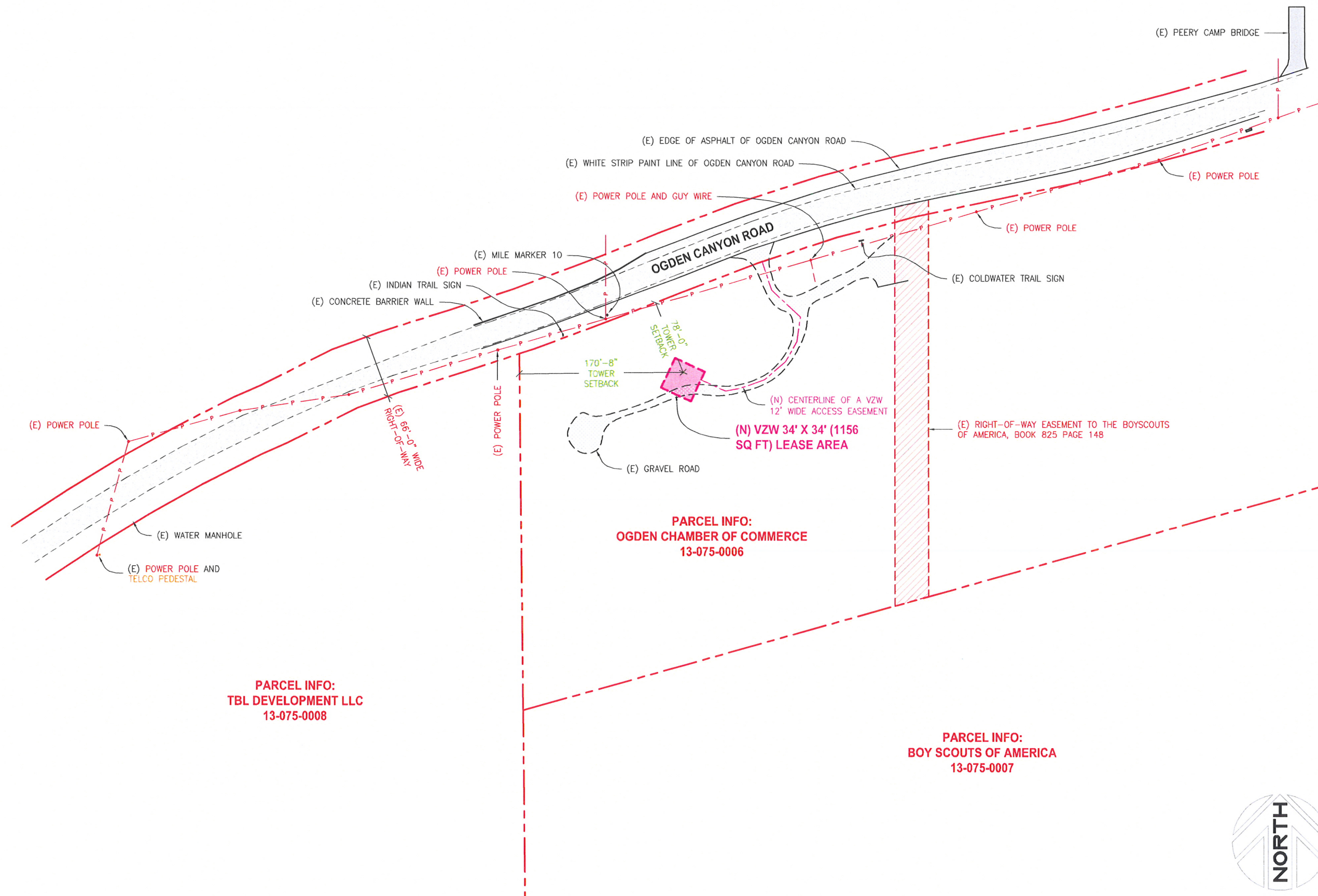
DRAWN BY: JAY C
CHECKED BY: DOUG K

REV	DATE	DESCRIPTION
1	09.15.2011	MOVED LEASE AREA
0	08.24.2011	ZONING DRAWINGS

SAL - PEERY CAMP
SW SEC 24, T6N, R1W
OGDEN CANYON HWY
OGDEN, UTAH 84401
-- RAWLAND SITE --

SHEET TITLE
OVERALL SITE PLAN

SHEET NUMBER
C100

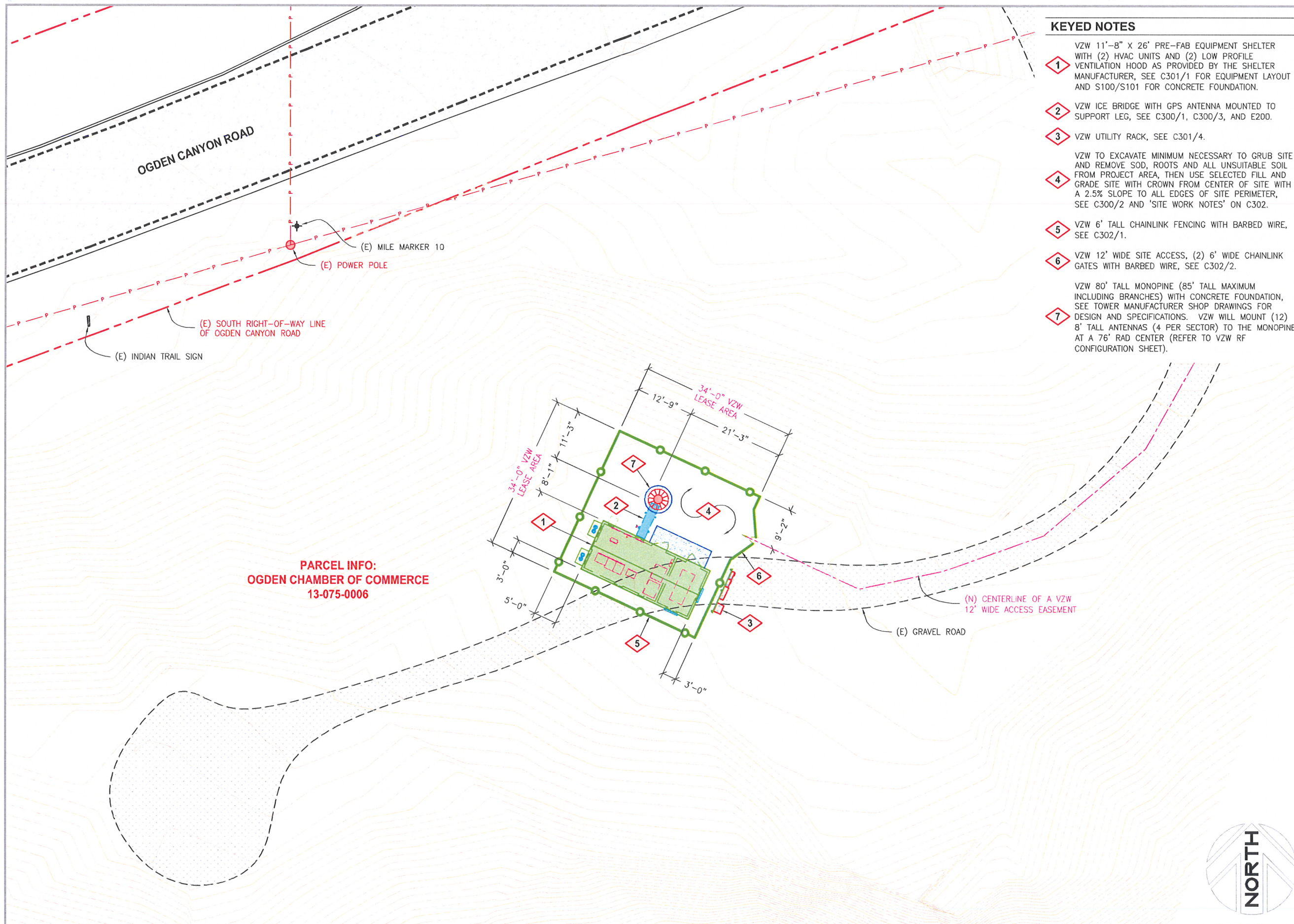


PARCEL INFO:
TBL DEVELOPMENT LLC
13-075-0008

PARCEL INFO:
OGDEN CHAMBER OF COMMERCE
13-075-0006

PARCEL INFO:
BOY SCOUTS OF AMERICA
13-075-0007





KEYED NOTES

- 1 VZW 11'-8" X 26' PRE-FAB EQUIPMENT SHELTER WITH (2) HVAC UNITS AND (2) LOW PROFILE VENTILATION HOOD AS PROVIDED BY THE SHELTER MANUFACTURER, SEE C301/1 FOR EQUIPMENT LAYOUT AND S100/S101 FOR CONCRETE FOUNDATION.
- 2 VZW ICE BRIDGE WITH GPS ANTENNA MOUNTED TO SUPPORT LEG, SEE C300/1, C300/3, AND E200.
- 3 VZW UTILITY RACK, SEE C301/4.
- 4 VZW TO EXCAVATE MINIMUM NECESSARY TO GRUB SITE AND REMOVE SOD, ROOTS AND ALL UNSUITABLE SOIL FROM PROJECT AREA, THEN USE SELECTED FILL AND GRADE SITE WITH CROWN FROM CENTER OF SITE WITH A 2.5% SLOPE TO ALL EDGES OF SITE PERIMETER, SEE C300/2 AND 'SITE WORK NOTES' ON C302.
- 5 VZW 6' TALL CHAINLINK FENCING WITH BARBED WIRE, SEE C302/1.
- 6 VZW 12' WIDE SITE ACCESS, (2) 6' WIDE CHAINLINK GATES WITH BARBED WIRE, SEE C302/2.
- 7 VZW 80' TALL MONOPINE (85' TALL MAXIMUM INCLUDING BRANCHES) WITH CONCRETE FOUNDATION, SEE TOWER MANUFACTURER SHOP DRAWINGS FOR DESIGN AND SPECIFICATIONS. VZW WILL MOUNT (12) 8' TALL ANTENNAS (4 PER SECTOR) TO THE MONOPINE AT A 76' RAD CENTER (REFER TO VZW RF CONFIGURATION SHEET).

PARCEL INFO:
OGDEN CHAMBER OF COMMERCE
13-075-0006



VERIZON WIRELESS
 9656 SOUTH PROSPERITY ROAD
 WEST JORDAN, UTAH 84088

TAEC
 Technology Associates Engineering Corporation
TECHNOLOGY ASSOCIATES

UTAH MARKET OFFICE
 9847 SOUTH 500 WEST
 SANDY, UTAH 84070

NORTHWEST REGIONAL OFFICE
 4800 SW MEADOWS ROAD, SUITE 300
 LAKE OSWEGO, OREGON 97035

DRAWN BY: JAY C
CHECKED BY: DOUG K

REV	DATE	DESCRIPTION
1	09.15.2011	MOVED LEASE AREA
0	08.24.2011	ZONING DRAWINGS

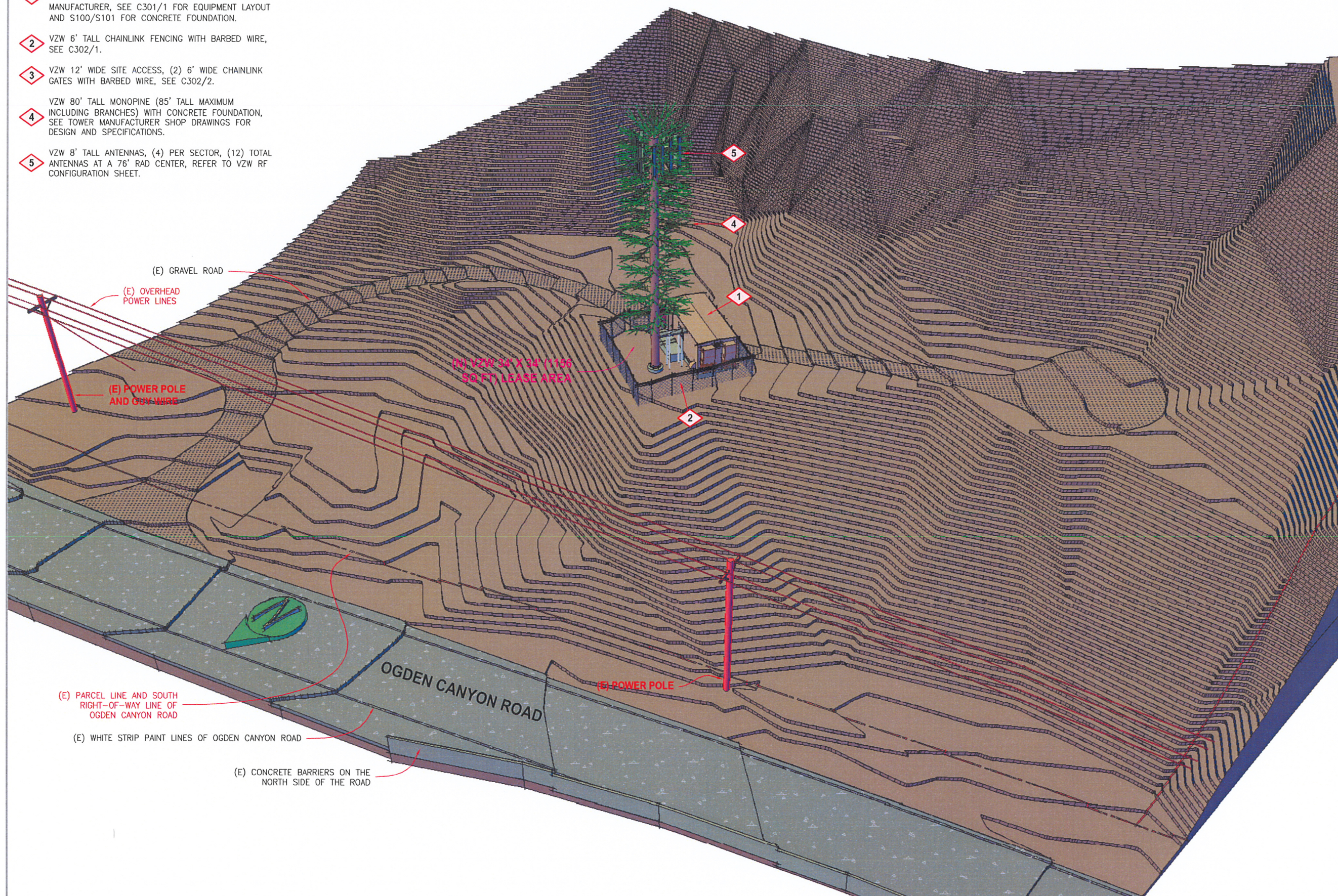
SAL - PEERY CAMP
 SW SEC 24, T6N, R1W
 OGDEN CANYON HWY
 OGDEN, UTAH 84401
 -- RAWLAND SITE --

SHEET TITLE
ENLARGED SITE PLAN

SHEET NUMBER
C101

KEYED NOTES

- 1 VZW 11'-8" X 26' PRE-FAB EQUIPMENT SHELTER WITH (2) HVAC UNITS AND (2) LOW PROFILE VENTILATION HOOD AS PROVIDED BY THE SHELTER MANUFACTURER, SEE C301/1 FOR EQUIPMENT LAYOUT AND S100/S101 FOR CONCRETE FOUNDATION.
- 2 VZW 6' TALL CHAINLINK FENCING WITH BARBED WIRE, SEE C302/1.
- 3 VZW 12' WIDE SITE ACCESS, (2) 6' WIDE CHAINLINK GATES WITH BARBED WIRE, SEE C302/2.
- 4 VZW 80' TALL MONOPINE (85' TALL MAXIMUM INCLUDING BRANCHES) WITH CONCRETE FOUNDATION, SEE TOWER MANUFACTURER SHOP DRAWINGS FOR DESIGN AND SPECIFICATIONS.
- 5 VZW 8' TALL ANTENNAS, (4) PER SECTOR, (12) TOTAL ANTENNAS AT A 76' RAD CENTER, REFER TO VZW RF CONFIGURATION SHEET.



(E) GRAVEL ROAD

(E) OVERHEAD POWER LINES

(E) POWER POLE AND GUY WIRE

(N) VZW 34' X 34' (1156 SQ. FT.) LEASE AREA

OGDEN CANYON ROAD

(E) POWER POLE

(E) PARCEL LINE AND SOUTH RIGHT-OF-WAY LINE OF OGDEN CANYON ROAD

(E) WHITE STRIP PAINT LINES OF OGDEN CANYON ROAD

(E) CONCRETE BARRIERS ON THE NORTH SIDE OF THE ROAD



VERIZON WIRELESS
 9656 SOUTH PROSPERITY ROAD
 WEST JORDAN, UTAH 84088

TAEC

Technology Associates Engineering Corporation
TECHNOLOGY ASSOCIATES

UTAH MARKET OFFICE
 9847 SOUTH 500 WEST
 SANDY, UTAH 84070

NORTHWEST REGIONAL OFFICE
 4800 SW MEADOWS ROAD, SUITE 300
 LAKE OSWEGO, OREGON 97035

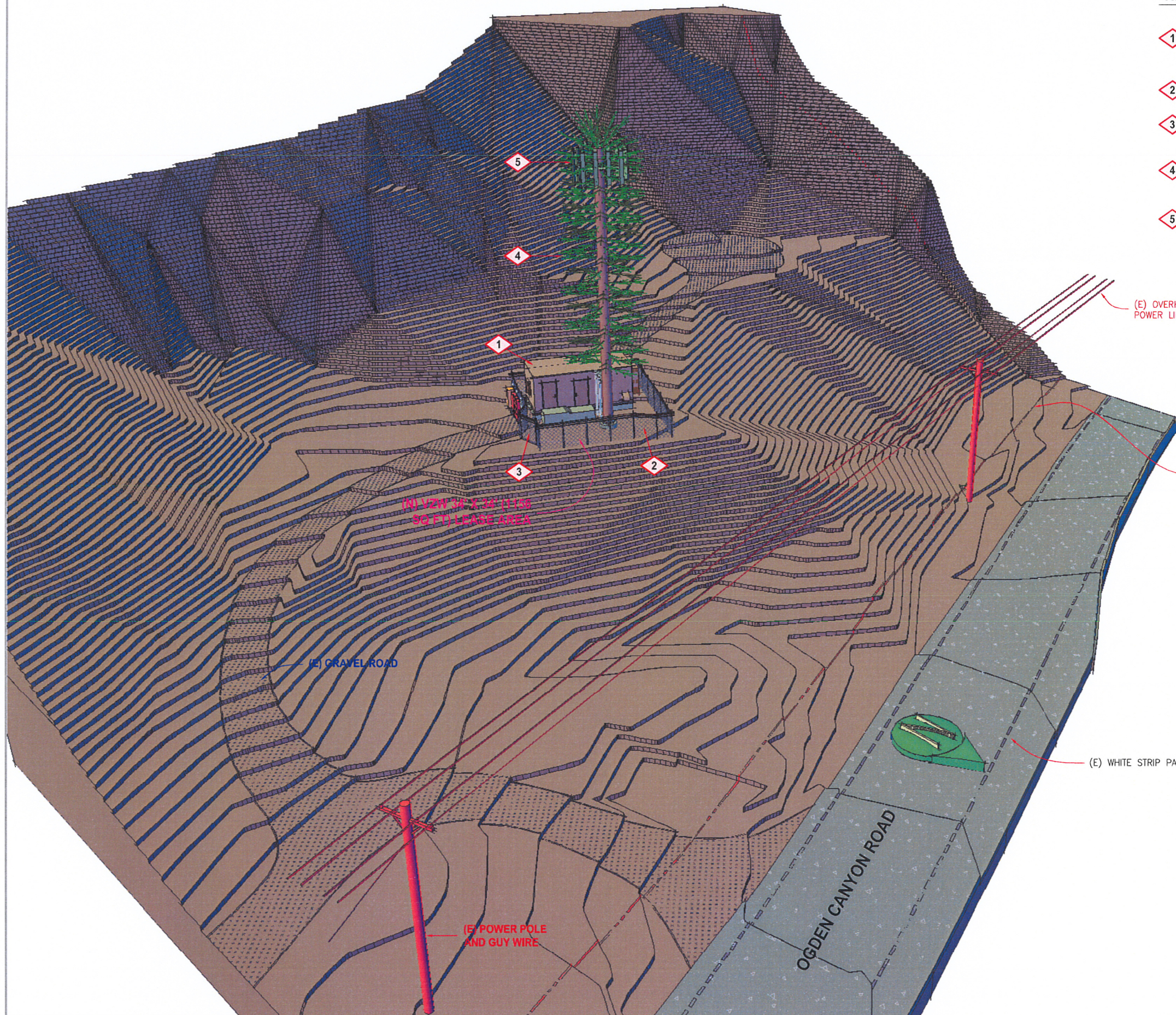
DRAWN BY: JAY C
 CHECKED BY: DOUG K

REV	DATE	DESCRIPTION
1	09.15.2011	MOVED LEASE AREA
0	08.24.2011	ZONING DRAWINGS

SAL - PEERY CAMP
 SW SEC 24, T6N, R1W
 OGDEN CANYON HWY
 OGDEN, UTAH 84401
 -- RAWLAND SITE --

SHEET TITLE
**SOUTHEASTERLY
 SITE ELEVATION**

SHEET NUMBER
C200



KEYED NOTES

- 1 VZW 11'-8" X 26' PRE-FAB EQUIPMENT SHELTER WITH (2) HVAC UNITS AND (2) LOW PROFILE VENTILATION HOOD AS PROVIDED BY THE SHELTER MANUFACTURER, SEE C301/1 FOR EQUIPMENT LAYOUT AND S100/S101 FOR CONCRETE FOUNDATION.
- 2 VZW 6' TALL CHAINLINK FENCING WITH BARBED WIRE, SEE C302/1.
- 3 VZW 12' WIDE SITE ACCESS, (2) 6' WIDE CHAINLINK GATES WITH BARBED WIRE, SEE C302/2.
- 4 VZW 80' TALL MONOPINE (85' TALL MAXIMUM INCLUDING BRANCHES) WITH CONCRETE FOUNDATION, SEE TOWER MANUFACTURER SHOP DRAWINGS FOR DESIGN AND SPECIFICATIONS.
- 5 VZW 8' TALL ANTENNAS, (4) PER SECTOR, (12) TOTAL ANTENNAS AT A 76' RAD CENTER, REFER TO VZW RF CONFIGURATION SHEET.



VERIZON WIRELESS
 9656 SOUTH PROSPERITY ROAD
 WEST JORDAN, UTAH 84088

TAEC

Technology Associates Engineering Corporation

TECHNOLOGY ASSOCIATES

UTAH MARKET OFFICE
 9847 SOUTH 500 WEST
 SANDY, UTAH 84070

NORTHWEST REGIONAL OFFICE
 4800 SW MEADOWS ROAD, SUITE 300
 LAKE OSWEGO, OREGON 97035

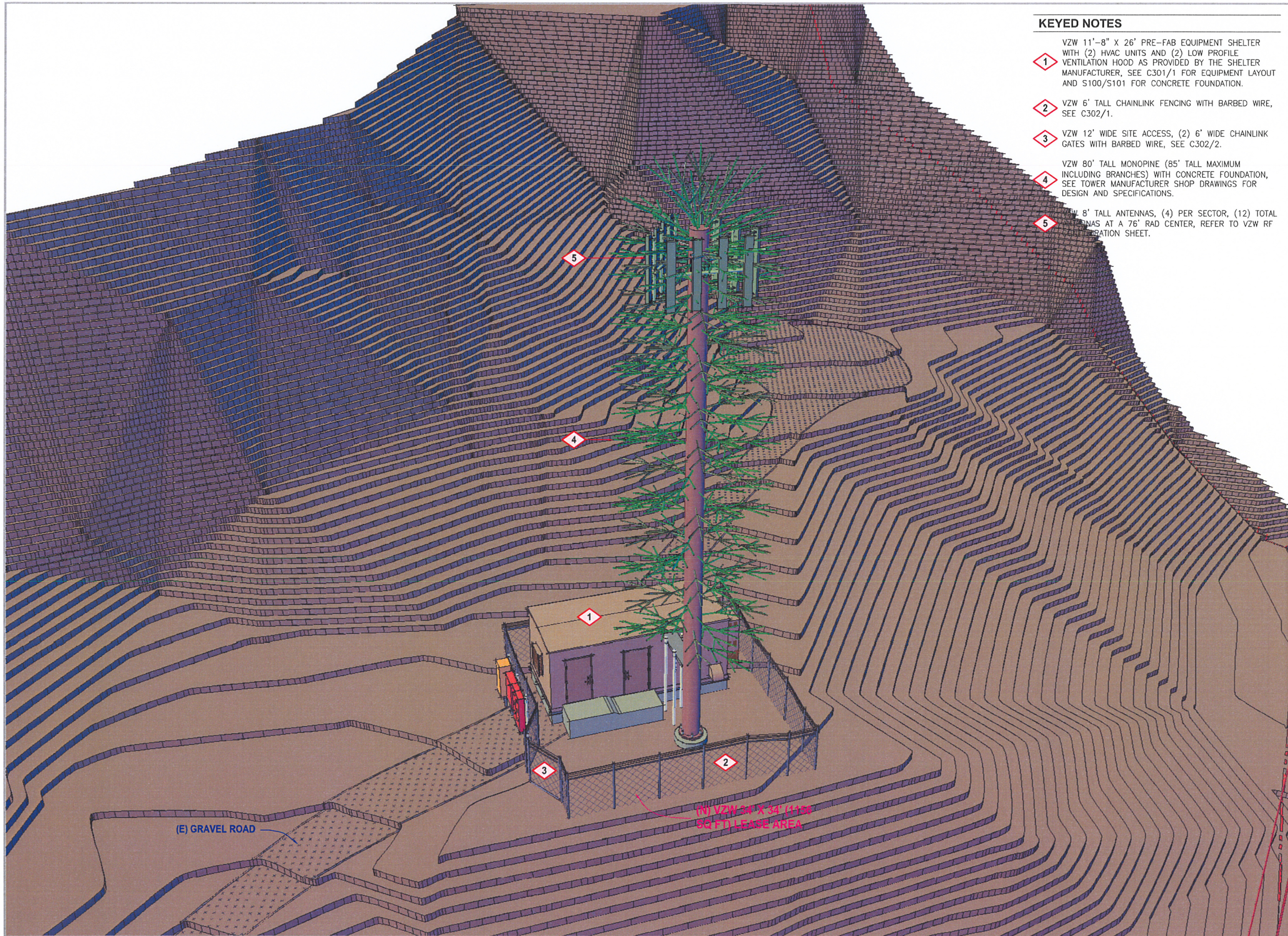
DRAWN BY: JAY C
 CHECKED BY: DOUG K

REV	DATE	DESCRIPTION
1	09.15.2011	MOVED LEASE AREA
0	08.24.2011	ZONING DRAWINGS

SAL - PEERY CAMP
 SW SEC 24, T6N, R1W
 OGDEN CANYON HWY
 OGDEN, UTAH 84401
 -- RAWLAND SITE --

SHEET TITLE
 SOUTHWESTERLY
 SITE ELEVATION

SHEET NUMBER
C201



KEYED NOTES

- 1 VZW 11'-8" X 26' PRE-FAB EQUIPMENT SHELTER WITH (2) HVAC UNITS AND (2) LOW PROFILE VENTILATION HOOD AS PROVIDED BY THE SHELTER MANUFACTURER, SEE C301/1 FOR EQUIPMENT LAYOUT AND S100/S101 FOR CONCRETE FOUNDATION.
- 2 VZW 6' TALL CHAINLINK FENCING WITH BARBED WIRE, SEE C302/1.
- 3 VZW 12' WIDE SITE ACCESS, (2) 6' WIDE CHAINLINK GATES WITH BARBED WIRE, SEE C302/2.
- 4 VZW 80' TALL MONOPINE (85' TALL MAXIMUM INCLUDING BRANCHES) WITH CONCRETE FOUNDATION, SEE TOWER MANUFACTURER SHOP DRAWINGS FOR DESIGN AND SPECIFICATIONS.
- 5 VZW 8' TALL ANTENNAS, (4) PER SECTOR, (12) TOTAL ANTENNAS AT A 76' RAD CENTER, REFER TO VZW RF COORDINATION SHEET.



VERIZON WIRELESS
 9656 SOUTH PROSPERITY ROAD
 WEST JORDAN, UTAH 84088

TAEC

Technology Associates Engineering Corporation
TECHNOLOGY ASSOCIATES

UTAH MARKET OFFICE
 9847 SOUTH 500 WEST
 SANDY, UTAH 84070

NORTHWEST REGIONAL OFFICE
 4800 SW MEADOWS ROAD, SUITE 300
 LAKE OSWEGO, OREGON 97035

DRAWN BY: JAY C
 CHECKED BY: DOUG K

REV	DATE	DESCRIPTION
1	09.15.2011	MOVED LEASE AREA
0	08.24.2011	ZONING DRAWINGS

SAL - PEERY CAMP
 SW SEC 24, T6N, R1W
 OGDEN CANYON HWY
 OGDEN, UTAH 84401
 -- RAWLAND SITE --

SHEET TITLE
**ENLARGED
 SOUTHWESTERLY
 SITE ELEVATION**

SHEET NUMBER
C202