

APPROVED

By Robert Whitlock at 5:23 pm, Jan 11, 2012

APPROVED

By Shane Tanner at 5:33 pm, Jan 11, 2012



SAL - PEERY CAMP

REVIEWED

By douglas.kofford at 3:20:13 PM, 1/11/2012

APPROVED

By Mark Kimber at 3:37 pm, Jan 11, 2012



VERIZON WIRELESS
9656 SOUTH PROSPERITY ROAD
WEST JORDAN, UTAH 84088

TAEC

Technology Associates Engineering Corporation
TECHNOLOGY ASSOCIATES

UTAH MARKET OFFICE
9847 SOUTH 500 WEST
SANDY, UTAH 84070

CORPORATE OFFICE
5930 PRIESTLY DRIVE
CARLSBAD, CALIFORNIA 92008

DRAWN BY: JAY C
CHECKED BY: DOUG K

SITE INFORMATION

APPLICANT:
VERIZON WIRELESS
9656 SOUTH PROSPERITY ROAD
WEST JORDAN, UTAH 84088

SITE ADDRESS:
SOUTHWEST QUARTER OF SECTION 24, T6N, R1W
OGDEN CANYON ROAD
OGDEN, UTAH 84401

LATITUDE AND LONGITUDE:
N 41°14'23.16", W 111°54'18.29"

ZONING JURISDICTION:
WEBER COUNTY

PROJECT DESCRIPTION:
VZW IS PROPOSING TO CONSTRUCT AN UNMANNED COMMUNICATIONS FACILITY CONSISTING OF ANTENNAS MOUNTED TO A NEW MONOPINE WITH EQUIPMENT LOCATED INSIDE A 11'-8" X 26' PREFABRICATED EQUIPMENT SHELTER

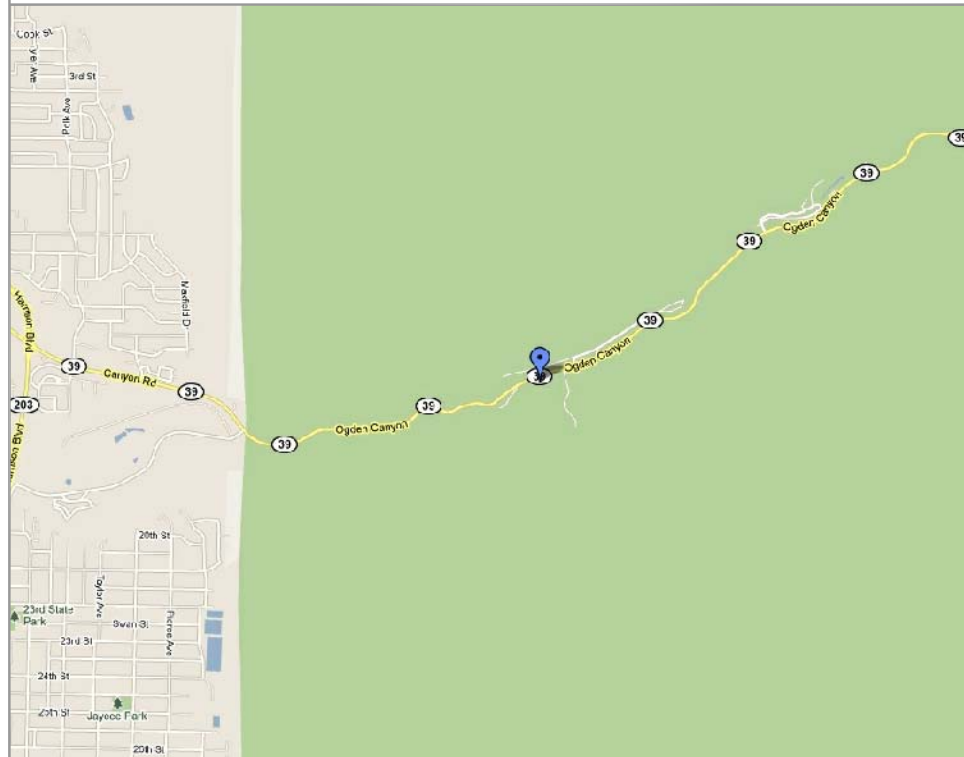
TYPE OF CONSTRUCTION:
PRE-FAB SHELTER, MONOPINE, AND ANTENNAS

HANDICAP REQUIREMENTS:
FACILITY IS UNMANNED AND NOT FOR HUMAN HABITATION. HANDICAP ACCESS REQUIREMENTS DO NOT APPLY

POWER COMPANY:
ROCKY MOUNTAIN POWER, 1-888-221-7070

TELEPHONE COMPANY:
QWEST, 1-800-244-1111

LOCATION MAP



APPROVALS

VERIZON WIRELESS REPRESENTATIVE:
VERIZON WIRELESS RF ENGINEER:
TAIC SITE ACQUISITION:
TAIC CONSTRUCTION MANAGER:
SITE OWNER:

DRAWING INDEX

SHEET NO.	SHEET TITLE	REV	REV DATE
T100	TITLE SHEET, VICINITY MAP, GENERAL SITE INFORMATION	4	01.11.2012
SURV	SITE SURVEY	0	
C100	OVERALL SITE PLAN	4	01.11.2012
C101	ENLARGED SITE PLAN	4	01.11.2012
C200	SOUTHEASTERLY SITE ELEVATION	4	01.11.2012
C201	SOUTHWESTERLY SITE ELEVATION	4	01.11.2012
C202	ENLARGED SOUTHWESTERLY SITE ELEVATION	4	01.11.2012

REV	DATE	DESCRIPTION
4	01.11.2012	REVISIONS PER CITY
3	12.09.2011	REVISIONS PER CITY
2	10.25.2011	FAA UPDATE
1	09.15.2011	MOVED LEASE AREA
0	08.24.2011	ZONING DRAWINGS

DO NOT SCALE DRAWINGS

CONTRACTOR SHALL VERIFY ALL PLANS, AND EXISTING DIMENSIONS, AND CONDITIONS ON THE JOB SITE, AND SHALL IMMEDIATELY NOTIFY THE ENGINEER IN WRITING OF ANY DISCREPANCIES BEFORE PROCEEDING WITH THE WORK OR BE RESPONSIBLE FOR SAME

DRIVING DIRECTIONS

TAKE I-15 NORTH TO 12TH STREET EXIT IN OGDEN (APPROX 40 MILES). TURN EAST ON 12TH AND FOLLOW ROAD EAST TOWARD THE MOUNTAIN. CONTINUE UP THE CANYON APPROX 1 MILE. SITE IS ON THE RIGHT SIDE JUST WEST OF THE KILN AND TRAIL HEAD.

CONTACT INFORMATION

SITE ACQUISITION:
TECHNOLOGY ASSOCIATES
9847 SOUTH 500 WEST
SANDY, UTAH 84070
CONTACT: DOUG KOFFORD
PHONE: 425-306-7886



UNDERGROUND SERVICE ALERT CALL 'BLUE STAKES OF UTAH', TOLL FREE 1-800-662-4111
THREE WORKING DAYS BEFORE YOU DIG

SAL - PEERY CAMP
SW SEC 24, T6N, R1W
OGDEN CANYON HWY
OGDEN, UTAH 84401
-- RAWLAND SITE --

SHEET TITLE
TITLE SHEET
VICINITY MAP
GENERAL INFORMATION

SHEET NUMBER
T100

ASAC INFORMATION SHEET 91:003

INFORMATION REGARDING SURVEY DATA SUBMITTED TO THE FAA

FAA Order 8260.19c requires proponents of certain proposed construction (located beneath instrument procedures) provide the FAA with a site survey and/or letter, from a licensed land surveyor, which certifies the site coordinates and the surface elevation at the site. On October 15, 1992, the FAA started using the North American Datum of 1983 (NAD-83), and therefore all site coordinates should be based on NAD-83. The FAA requires that the survey letter contain an accuracy statement that meets accuracy tolerances required by the FAA. The most requested tolerances are +/- 50 feet in the horizontal and +/- 20 feet in the vertical (2-C). When the site coordinates and/or site elevation can be certified to a greater accuracy than requested by the FAA, please do so.

In order to avoid FAA processing delays, the original site survey or certifying letter should be attached to the 7460 when it is filed at the FAA's regional office. It must be signed and sealed by the licensed land surveyor having performed or supervised the survey.

The FAA accuracy codes and a sample accuracy statement are listed below.

ACCURACY CODES:

<u>HORIZONTAL</u>		<u>VERTICAL</u>	
<u>Code</u>	<u>Tolerance</u>	<u>Code</u>	<u>Tolerance</u>
1	+/- 15 ft	A	+/- 3 ft
2	+/- 50 ft	B	+/- 10 ft
3	+/- 100 ft	C	+/- 20 ft
4	+/- 250 ft	D	+/- 50 ft
5	+/- 500 ft	E	+/- 125 ft
6	+/- 1000 ft	F	+/- 250 ft
7	+/- 1/2 NM	G	+/- 500 ft
8	+/- 1 NM	H	+/- 1000 ft
9	Unknown	I	Unknown

Date: OCTOBER 24, 2011

Re: SAL PEERY CAMP

SW 1/4 OF SECTION 24, TOWNSHIP 6 NORTH, RANGE 1 WEST, SALT LAKE MERIDIAN
OGDEN CANYON HIGHWAY, OGDEN, UTAH

I certify that the latitude of N 41°14'23.16", and the longitude of W 111°54'18.29", are accurate to within 15 feet horizontally and the site elevation of 4641.21 feet, AMSL (American Mean Sea Level), is accurate to within +/- 3 feet vertically. The horizontal datum (coordinates) are in terms of the North American Datum of 1983 (NAD-83) and are expressed as degrees, minutes and seconds, to the nearest (tenth/hundredth) of a second. The vertical datum (heights) are in terms of the (NAVD88) and are determined to the nearest foot.



Professional Licensed Land Surveyor:
1-A FAA Letter

Richard W. Miller, Utah LS no. 155641

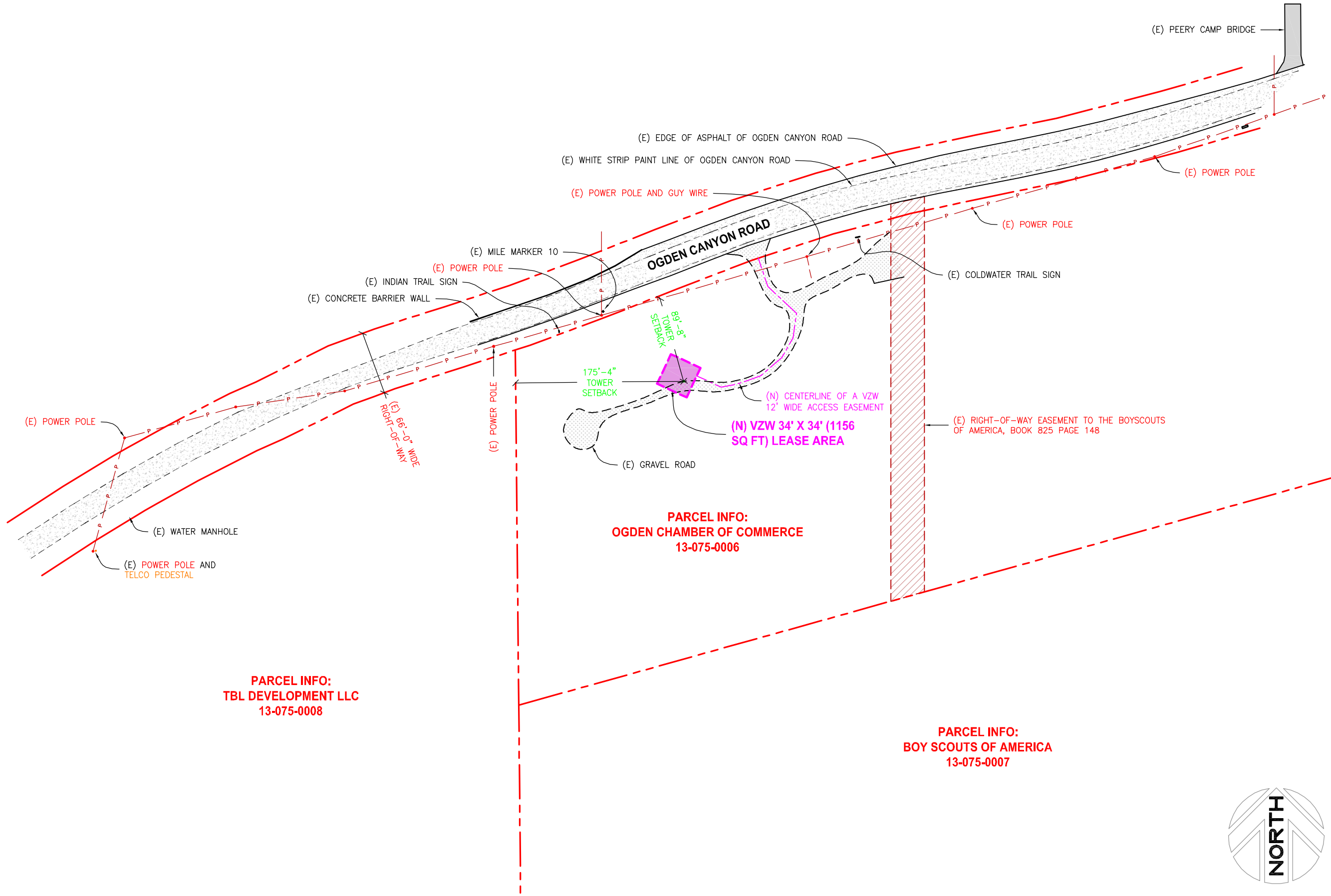
REV	DATE	DESCRIPTION
4	01.11.2012	REVISIONS PER CITY
3	12.09.2011	REVISIONS PER CITY
2	10.25.2011	FAA UPDATE
1	09.15.2011	MOVED LEASE AREA
0	08.24.2011	ZONING DRAWINGS

--	--	--

SAL - PEERY CAMP
SW SEC 24, T6N, R1W
OGDEN CANYON HWY
OGDEN, UTAH 84401
-- RAWLAND SITE --

SHEET TITLE
OVERALL SITE PLAN

SHEET NUMBER
C100

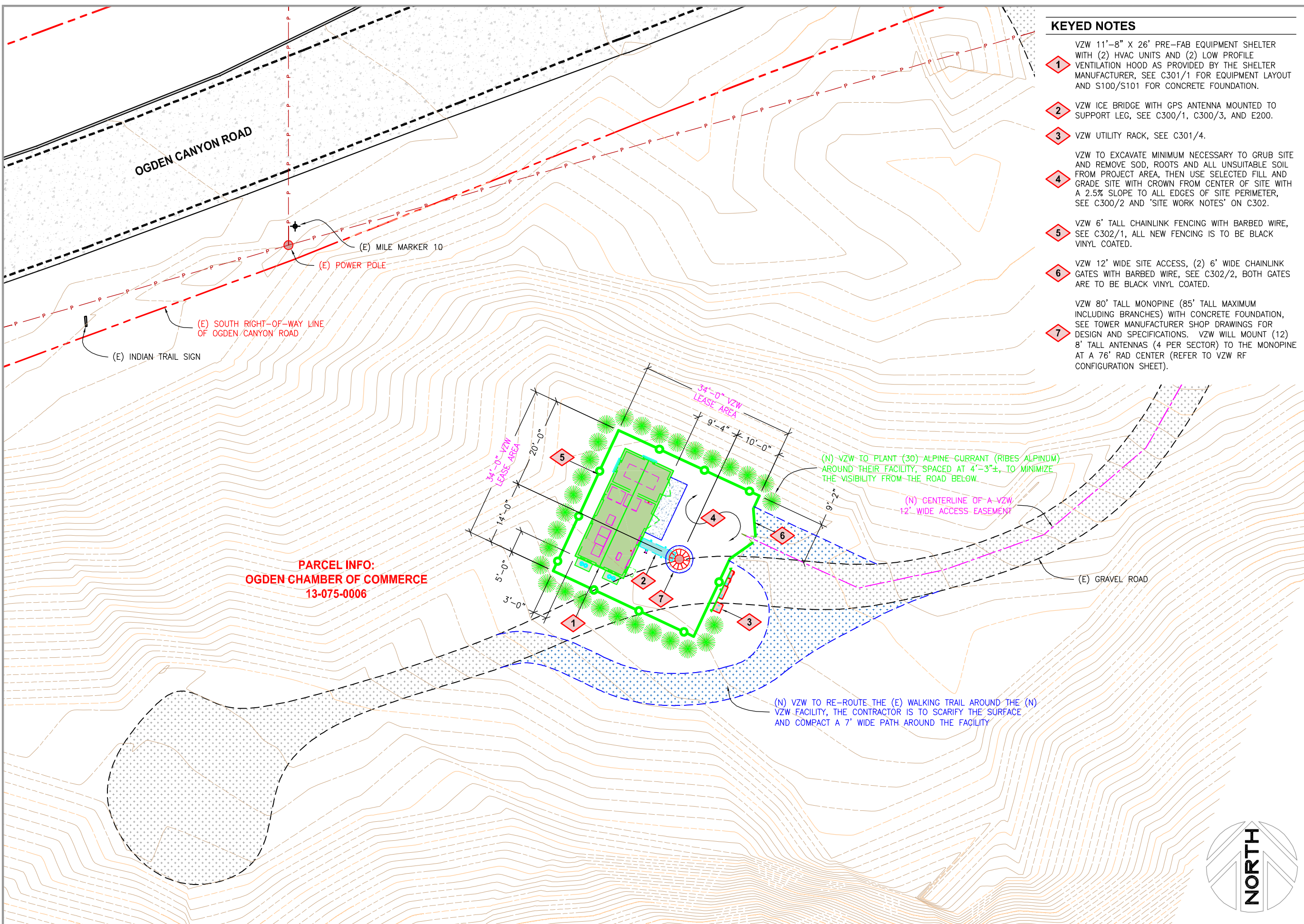


PARCEL INFO:
TBL DEVELOPMENT LLC
13-075-0008

PARCEL INFO:
OGDEN CHAMBER OF COMMERCE
13-075-0006

PARCEL INFO:
BOY SCOUTS OF AMERICA
13-075-0007





PARCEL INFO:
OGDEN CHAMBER OF COMMERCE
 13-075-0006

KEYED NOTES

- 1 VZW 11'-8" X 26' PRE-FAB EQUIPMENT SHELTER WITH (2) HVAC UNITS AND (2) LOW PROFILE VENTILATION HOOD AS PROVIDED BY THE SHELTER MANUFACTURER, SEE C301/1 FOR EQUIPMENT LAYOUT AND S100/S101 FOR CONCRETE FOUNDATION.
- 2 VZW ICE BRIDGE WITH GPS ANTENNA MOUNTED TO SUPPORT LEG, SEE C300/1, C300/3, AND E200.
- 3 VZW UTILITY RACK, SEE C301/4.
- 4 VZW TO EXCAVATE MINIMUM NECESSARY TO GRUB SITE AND REMOVE SOD, ROOTS AND ALL UNSUITABLE SOIL FROM PROJECT AREA, THEN USE SELECTED FILL AND GRADE SITE WITH CROWN FROM CENTER OF SITE WITH A 2.5% SLOPE TO ALL EDGES OF SITE PERIMETER, SEE C300/2 AND 'SITE WORK NOTES' ON C302.
- 5 VZW 6' TALL CHAINLINK FENCING WITH BARBED WIRE, SEE C302/1, ALL NEW FENCING IS TO BE BLACK VINYL COATED.
- 6 VZW 12' WIDE SITE ACCESS, (2) 6' WIDE CHAINLINK GATES WITH BARBED WIRE, SEE C302/2, BOTH GATES ARE TO BE BLACK VINYL COATED.
- 7 VZW 80' TALL MONOPINE (85' TALL MAXIMUM INCLUDING BRANCHES) WITH CONCRETE FOUNDATION, SEE TOWER MANUFACTURER SHOP DRAWINGS FOR DESIGN AND SPECIFICATIONS. VZW WILL MOUNT (12) 8' TALL ANTENNAS (4 PER SECTOR) TO THE MONOPINE AT A 76' RAD CENTER (REFER TO VZW RF CONFIGURATION SHEET).



VERIZON WIRELESS
 9656 SOUTH PROSPERITY ROAD
 WEST JORDAN, UTAH 84088



TECHNOLOGY ASSOCIATES

UTAH MARKET OFFICE
 9847 SOUTH 500 WEST
 SANDY, UTAH 84070

CORPORATE OFFICE
 5930 PRIESTLY DRIVE
 CARLSBAD, CALIFORNIA 92008

DRAWN BY: JAY C
CHECKED BY: DOUG K

REV	DATE	DESCRIPTION
4	01.11.2012	REVISIONS PER CITY
3	12.09.2011	REVISIONS PER CITY
2	10.25.2011	FAA UPDATE
1	09.15.2011	MOVED LEASE AREA
0	08.24.2011	ZONING DRAWINGS

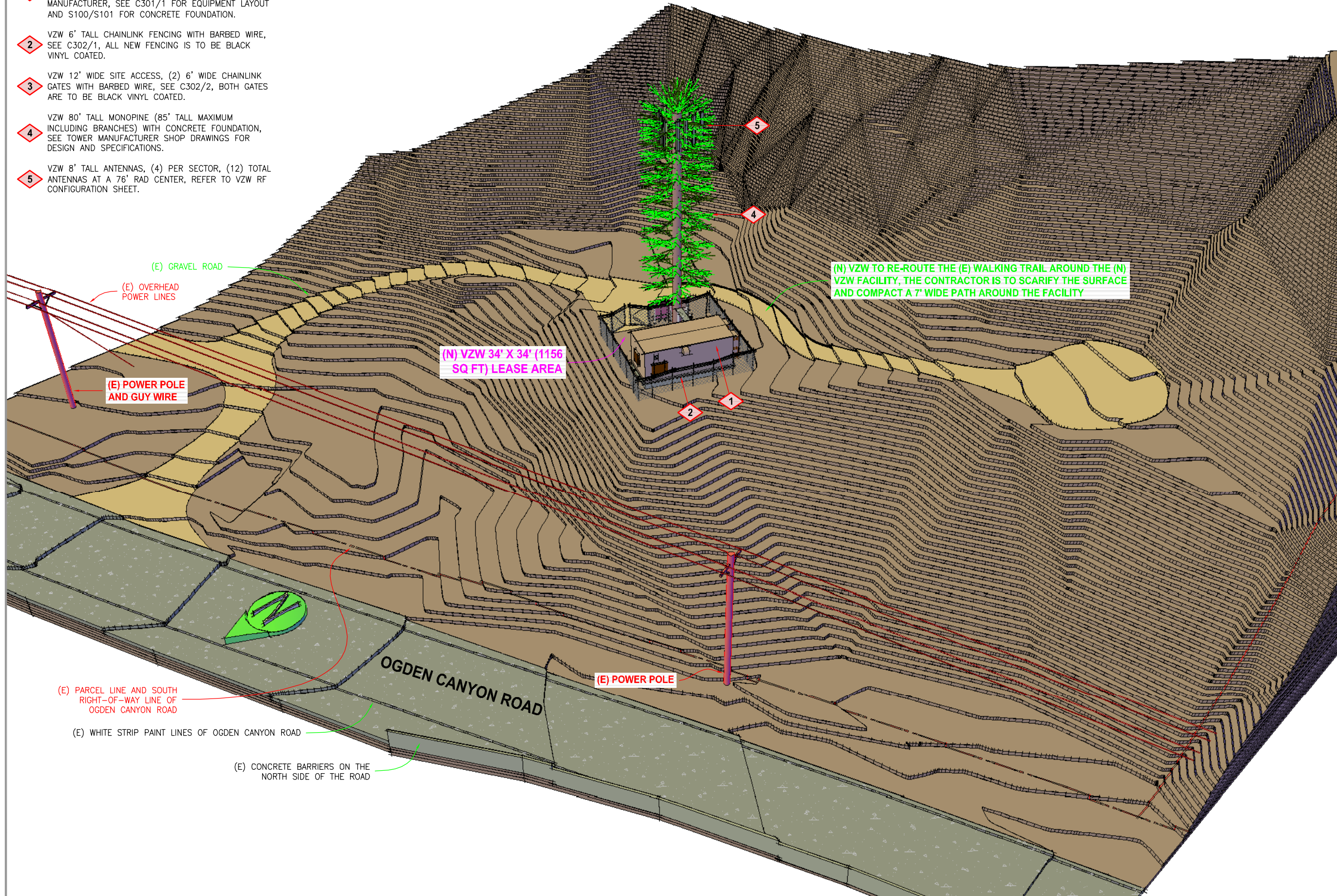
SAL - PEERY CAMP
 SW SEC 24, T6N, R1W
 OGDEN CANYON HWY
 OGDEN, UTAH 84401
 -- RAWLAND SITE --

SHEET TITLE
 ENLARGED SITE PLAN

SHEET NUMBER
C101

KEYED NOTES

- 1** VZW 11'-8" X 26' PRE-FAB EQUIPMENT SHELTER WITH (2) HVAC UNITS AND (2) LOW PROFILE VENTILATION HOOD AS PROVIDED BY THE SHELTER MANUFACTURER, SEE C301/1 FOR EQUIPMENT LAYOUT AND S100/S101 FOR CONCRETE FOUNDATION.
- 2** VZW 6' TALL CHAINLINK FENCING WITH BARBED WIRE, SEE C302/1, ALL NEW FENCING IS TO BE BLACK VINYL COATED.
- 3** VZW 12' WIDE SITE ACCESS, (2) 6' WIDE CHAINLINK GATES WITH BARBED WIRE, SEE C302/2, BOTH GATES ARE TO BE BLACK VINYL COATED.
- 4** VZW 80' TALL MONOPINE (85' TALL MAXIMUM INCLUDING BRANCHES) WITH CONCRETE FOUNDATION, SEE TOWER MANUFACTURER SHOP DRAWINGS FOR DESIGN AND SPECIFICATIONS.
- 5** VZW 8' TALL ANTENNAS, (4) PER SECTOR, (12) TOTAL ANTENNAS AT A 76' RAD CENTER, REFER TO VZW RF CONFIGURATION SHEET.



(N) VZW TO RE-ROUTE THE (E) WALKING TRAIL AROUND THE (N) VZW FACILITY, THE CONTRACTOR IS TO SCARIFY THE SURFACE AND COMPACT A 7' WIDE PATH AROUND THE FACILITY

(N) VZW 34' X 34' (1156 SQ FT) LEASE AREA



VERIZON WIRELESS
9656 SOUTH PROSPERITY ROAD
WEST JORDAN, UTAH 84088

TAEC
Technology Associates Engineering Corporation
TECHNOLOGY ASSOCIATES

UTAH MARKET OFFICE
9847 SOUTH 500 WEST
SANDY, UTAH 84070

CORPORATE OFFICE
5930 PRIESTLY DRIVE
CARLSBAD, CALIFORNIA 92008

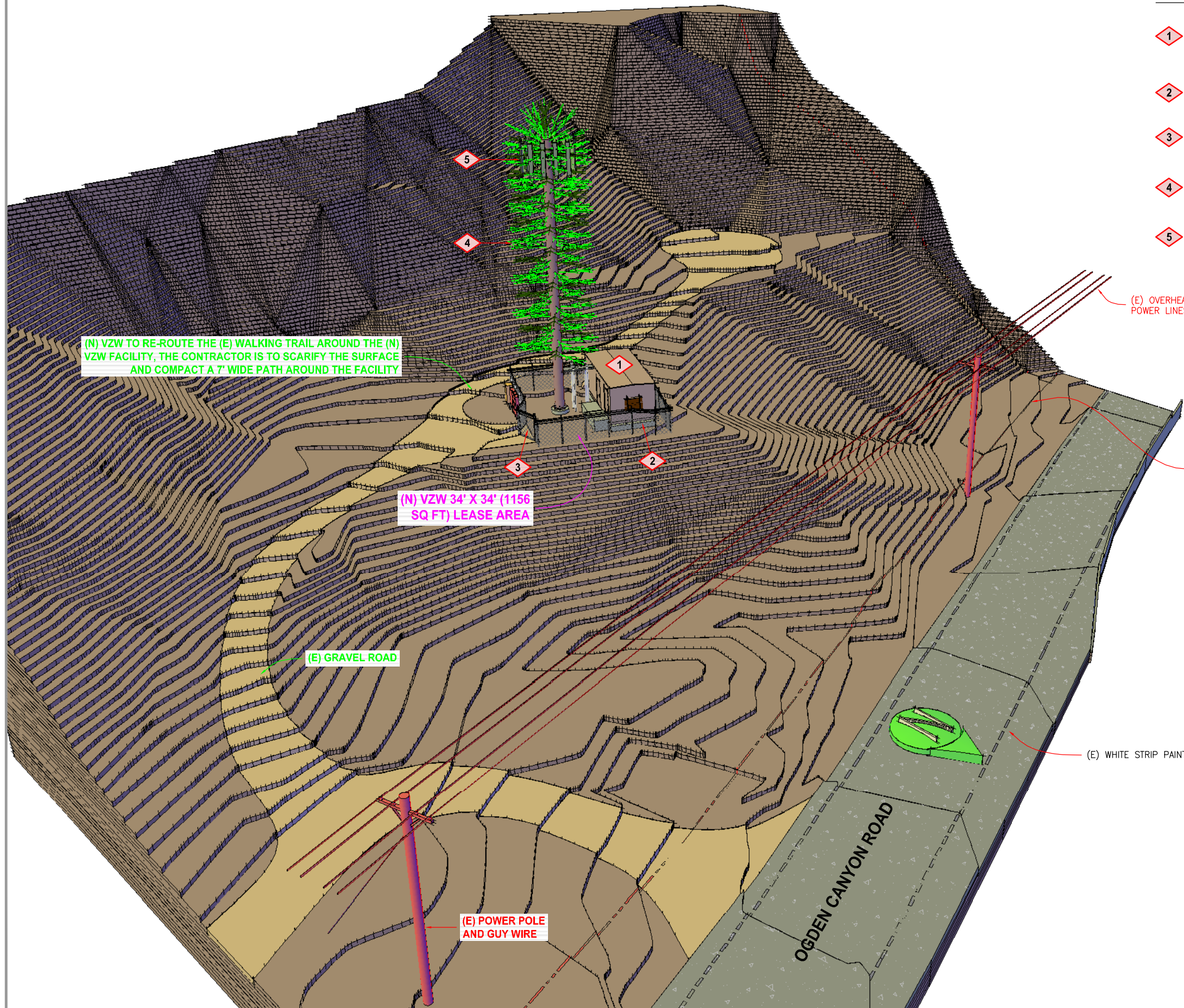
DRAWN BY: JAY C
CHECKED BY: DOUG K

REV	DATE	DESCRIPTION
4	01.11.2012	REVISIONS PER CITY
3	12.09.2011	REVISIONS PER CITY
2	10.25.2011	FAA UPDATE
1	09.15.2011	MOVED LEASE AREA
0	08.24.2011	ZONING DRAWINGS

SAL - PEERY CAMP
SW SEC 24, T6N, R1W
OGDEN CANYON HWY
OGDEN, UTAH 84401
-- RAWLAND SITE --

SHEET TITLE
**SOUTHEASTERLY
SITE ELEVATION**

SHEET NUMBER
C200



(N) VZW TO RE-ROUTE THE (E) WALKING TRAIL AROUND THE (N) VZW FACILITY, THE CONTRACTOR IS TO SCARIFY THE SURFACE AND COMPACT A 7' WIDE PATH AROUND THE FACILITY

(N) VZW 34' X 34' (1156 SQ FT) LEASE AREA

(E) GRAVEL ROAD

(E) POWER POLE AND GUY WIRE

(E) OVERHEAD POWER LINES

(E) PARCEL LINE AND SOUTH RIGHT-OF-WAY LINE OF OGDEN CANYON ROAD

(E) WHITE STRIP PAINT LINES OF OGDEN CANYON ROAD

OGDEN CANYON ROAD

KEYED NOTES

- 1 VZW 11'-8" X 26' PRE-FAB EQUIPMENT SHELTER WITH (2) HVAC UNITS AND (2) LOW PROFILE VENTILATION HOOD AS PROVIDED BY THE SHELTER MANUFACTURER, SEE C301/1 FOR EQUIPMENT LAYOUT AND S100/S101 FOR CONCRETE FOUNDATION.
- 2 VZW 6' TALL CHAINLINK FENCING WITH BARBED WIRE, SEE C302/1, ALL NEW FENCING IS TO BE BLACK VINYL COATED.
- 3 VZW 12' WIDE SITE ACCESS, (2) 6' WIDE CHAINLINK GATES WITH BARBED WIRE, SEE C302/2, BOTH GATES ARE TO BE BLACK VINYL COATED.
- 4 VZW 80' TALL MONOPINE (85' TALL MAXIMUM INCLUDING BRANCHES) WITH CONCRETE FOUNDATION, SEE TOWER MANUFACTURER SHOP DRAWINGS FOR DESIGN AND SPECIFICATIONS.
- 5 VZW 8' TALL ANTENNAS, (4) PER SECTOR, (12) TOTAL ANTENNAS AT A 76' RAD CENTER, REFER TO VZW RF CONFIGURATION SHEET.



VERIZON WIRELESS
9656 SOUTH PROSPERITY ROAD
WEST JORDAN, UTAH 84088

TAEC
Technology Associates Engineering Corporation
TECHNOLOGY ASSOCIATES

UTAH MARKET OFFICE
9847 SOUTH 500 WEST
SANDY, UTAH 84070

CORPORATE OFFICE
5930 PRIESTLY DRIVE
CARLSBAD, CALIFORNIA 92008

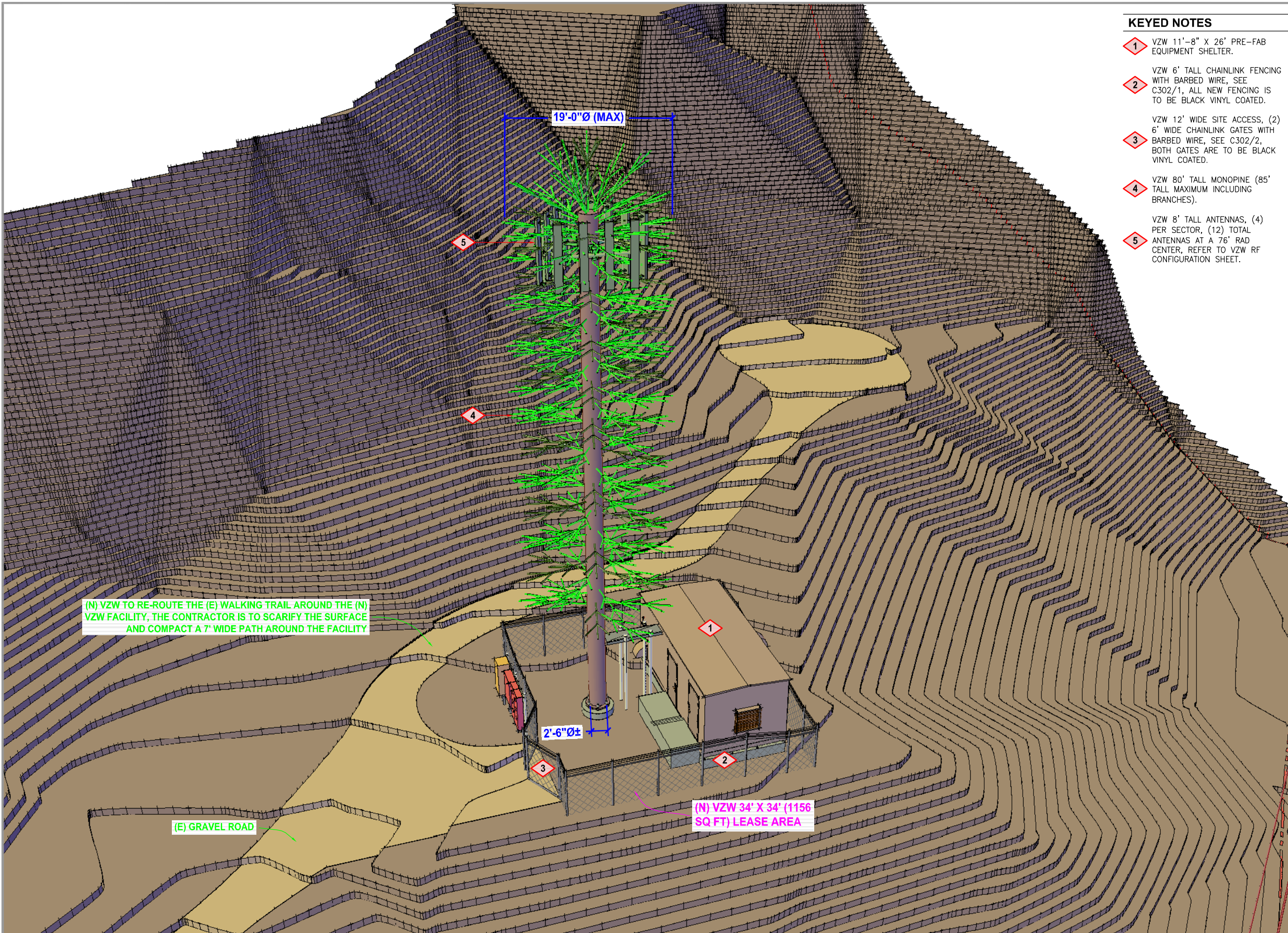
DRAWN BY: JAY C
CHECKED BY: DOUG K

REV	DATE	DESCRIPTION
4	01.11.2012	REVISIONS PER CITY
3	12.09.2011	REVISIONS PER CITY
2	10.25.2011	FAA UPDATE
1	09.15.2011	MOVED LEASE AREA
0	08.24.2011	ZONING DRAWINGS

SAL - PEERY CAMP
SW SEC 24, T6N, R1W
OGDEN CANYON HWY
OGDEN, UTAH 84401
-- RAWLAND SITE --

SHEET TITLE
**SOUTHWESTERLY
SITE ELEVATION**

SHEET NUMBER
C201



KEYED NOTES

- 1 VZW 11'-8" X 26' PRE-FAB EQUIPMENT SHELTER.
- 2 VZW 6' TALL CHAINLINK FENCING WITH BARBED WIRE, SEE C302/1, ALL NEW FENCING IS TO BE BLACK VINYL COATED.
- 3 VZW 12' WIDE SITE ACCESS, (2) 6' WIDE CHAINLINK GATES WITH BARBED WIRE, SEE C302/2, BOTH GATES ARE TO BE BLACK VINYL COATED.
- 4 VZW 80' TALL MONOPINE (85' TALL MAXIMUM INCLUDING BRANCHES).
- 5 VZW 8' TALL ANTENNAS, (4) PER SECTOR, (12) TOTAL ANTENNAS AT A 76' RAD CENTER, REFER TO VZW RF CONFIGURATION SHEET.



VERIZON WIRELESS
 9656 SOUTH PROSPERITY ROAD
 WEST JORDAN, UTAH 84088

TAEC

Technology Associates Engineering Corporation

TECHNOLOGY ASSOCIATES

UTAH MARKET OFFICE
 9847 SOUTH 500 WEST
 SANDY, UTAH 84070

CORPORATE OFFICE
 5930 PRIESTLY DRIVE
 CARLSBAD, CALIFORNIA 92008

DRAWN BY: JAY C

CHECKED BY: DOUG K

REV	DATE	DESCRIPTION
4	01.11.2012	REVISIONS PER CITY
3	12.09.2011	REVISIONS PER CITY
2	10.25.2011	FAA UPDATE
1	09.15.2011	MOVED LEASE AREA
0	08.24.2011	ZONING DRAWINGS

SAL - PEERY CAMP
 SW SEC 24, T6N, R1W
 OGDEN CANYON HWY
 OGDEN, UTAH 84401
 -- RAWLAND SITE --

SHEET TITLE
 ENLARGED
 SOUTHWESTERLY
 SITE ELEVATION

SHEET NUMBER

C202