



SAL - PEERY CAMP

**verizon
wireless**

VERIZON WIRELESS
9656 SOUTH PROSPERITY ROAD
WEST JORDAN, UTAH 84088

TAEC

Technology Associates Engineering Corporation
TECHNOLOGY ASSOCIATES

UTAH MARKET OFFICE
9847 SOUTH 500 WEST
SANDY, UTAH 84070

CORPORATE OFFICE
5930 PRIESTLY DRIVE
CARLSBAD, CALIFORNIA 92008

DRAWN BY: JAY C
CHECKED BY: NEFI G

REV	DATE	DESCRIPTION
6	08.27.2012	MOVED LEASE AREA
5	01.18.2012	REVISIONS PER CITY
4	01.11.2012	REVISIONS PER CITY
3	12.09.2011	REVISIONS PER CITY
2	10.25.2011	FAA UPDATE
1	09.15.2011	MOVED LEASE AREA
0	08.24.2011	ZONING DRAWINGS

SITE INFORMATION

APPLICANT:
VERIZON WIRELESS
9656 SOUTH PROSPERITY ROAD
WEST JORDAN, UTAH 84088

SITE ADDRESS:
SOUTHWEST QUARTER OF SECTION 24, T6N, R1W
OGDEN CANYON ROAD
OGDEN, UTAH 84401

LATITUDE AND LONGITUDE:
N 41°14'23.85", W 111°54'16.22" (NOT FOR FAA USE)

ZONING JURISDICTION:
WEBER COUNTY

PROJECT DESCRIPTION:
VZW IS PROPOSING TO CONSTRUCT AN UNMANNED COMMUNICATIONS FACILITY CONSISTING OF ANTENNAS MOUNTED TO A NEW MONOPOLE WITH EQUIPMENT LOCATED INSIDE A 11'-6" X 26' PREFABRICATED EQUIPMENT SHELTER

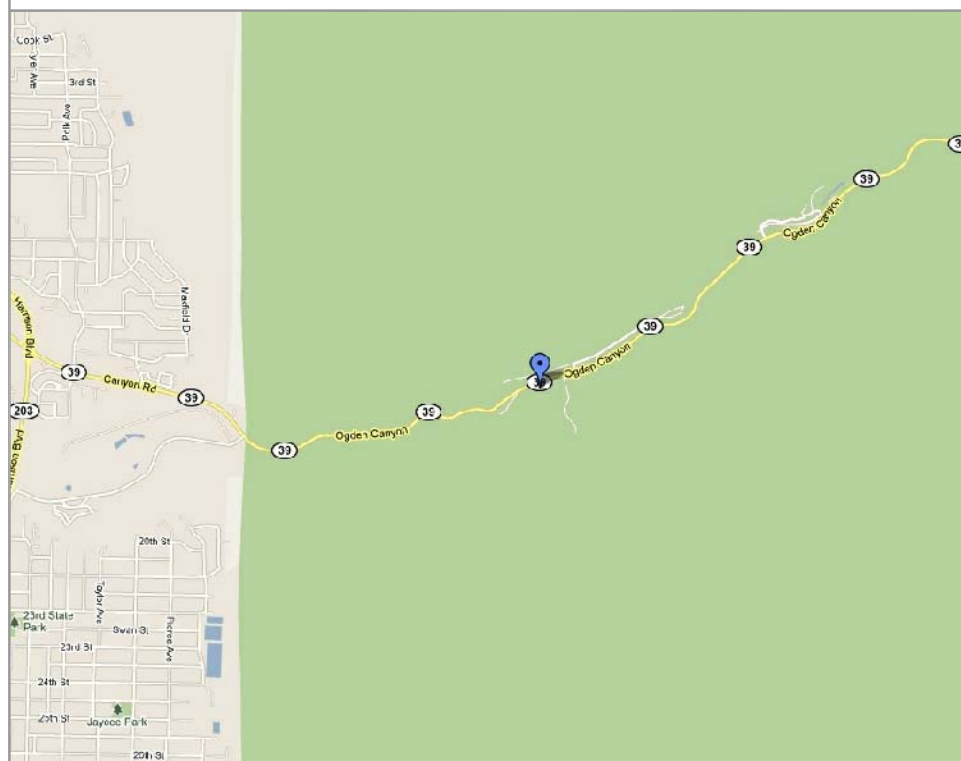
TYPE OF CONSTRUCTION:
PRE-FAB SHELTER, MONOPINE, AND ANTENNAS

HANDICAP REQUIREMENTS:
FACILITY IS UNMANNED AND NOT FOR HUMAN HABITATION. HANDICAP ACCESS REQUIREMENTS DO NOT APPLY

POWER COMPANY:
ROCKY MOUNTAIN POWER, 1-888-221-7070

TELEPHONE COMPANY:
CENTURY LINK, 1-800-244-1111

LOCATION MAP



DO NOT SCALE DRAWINGS

CONTRACTOR SHALL VERIFY ALL PLANS, AND EXISTING DIMENSIONS, AND CONDITIONS ON THE JOB SITE, AND SHALL IMMEDIATELY NOTIFY THE ENGINEER IN WRITING OF ANY DISCREPANCIES BEFORE PROCEEDING WITH THE WORK OR BE RESPONSIBLE FOR SAME

DRIVING DIRECTIONS

TAKE I-15 NORTH TO 12TH STREET EXIT IN OGDEN (APPROX 40 MILES). TURN EAST ON 12TH AND FOLLOW ROAD EAST TOWARD THE MOUNTAIN. CONTINUE UP THE CANYON APPROX 1 MILE. SITE IS ON THE RIGHT SIDE JUST WEST OF THE KILN AND TRAIL HEAD.

APPROVALS

VERIZON WIRELESS REPRESENTATIVE:
VERIZON WIRELESS RF ENGINEER:
TAIC SITE ACQUISITION:
TAIC CONSTRUCTION MANAGER:
SITE OWNER:

DRAWING INDEX

SHEET NO.	SHEET TITLE	REV	REV DATE
T100	TITLE SHEET, VICINITY MAP, GENERAL SITE INFORMATION	6	08.28.2012
SURV	SITE SURVEY	1	08.28.2012
C100	OVERALL SITE PLAN	6	08.28.2012
C101	ENLARGED SITE PLAN	6	08.28.2012
C200	SOUTHEASTERLY SITE ELEVATION	6	08.28.2012
C201	SOUTH AND WEST SITE ELEVATIONS	6	08.28.2012

CONTACT INFORMATION

SITE ACQUISITION:
TECHNOLOGY ASSOCIATES
9847 SOUTH 500 WEST
SANDY, UTAH 84070
CONTACT: NEFI GARCIA
PHONE: 801-463-1020



UNDERGROUND SERVICE ALERT, CALL 'BLUE STAKES OF UTAH' @ 811 OR 1-800-662-4111
THREE WORKING DAYS BEFORE YOU DIG

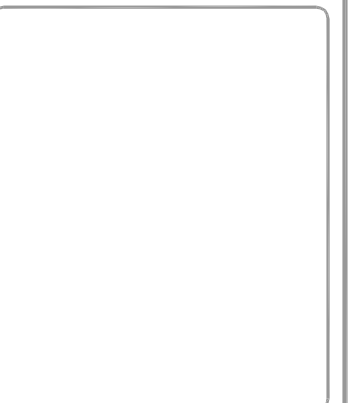


SHEET TITLE
TITLE SHEET
VICINITY MAP
GENERAL INFORMATION

SHEET NUMBER
T100

SAL - PEERY CAMP
SW SEC 24, T6N, R1W
OGDEN CANYON HWY
OGDEN, UTAH 84401
-- RAWLAND SITE --

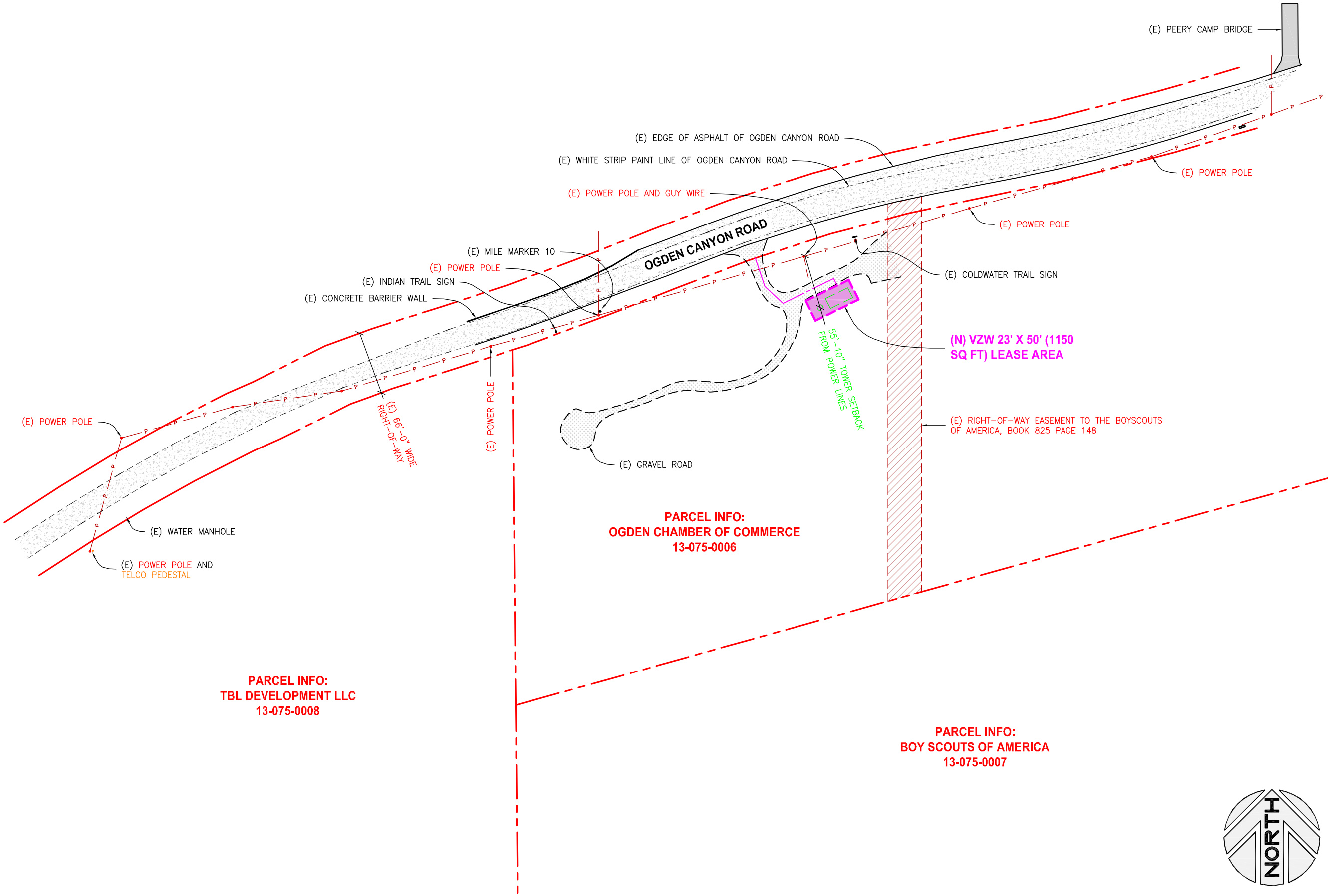
REV	DATE	DESCRIPTION
6	08.27.2012	MOVED LEASE AREA
5	01.18.2012	REVISIONS PER CITY
4	01.11.2012	REVISIONS PER CITY
3	12.09.2011	REVISIONS PER CITY
2	10.25.2011	FAA UPDATE
1	09.15.2011	MOVED LEASE AREA
0	08.24.2011	ZONING DRAWINGS



SAL - PEERY CAMP
SW SEC 24, T6N, R1W
OGDEN CANYON HWY
OGDEN, UTAH 84401
-- RAWLAND SITE --

SHEET TITLE
OVERALL SITE PLAN

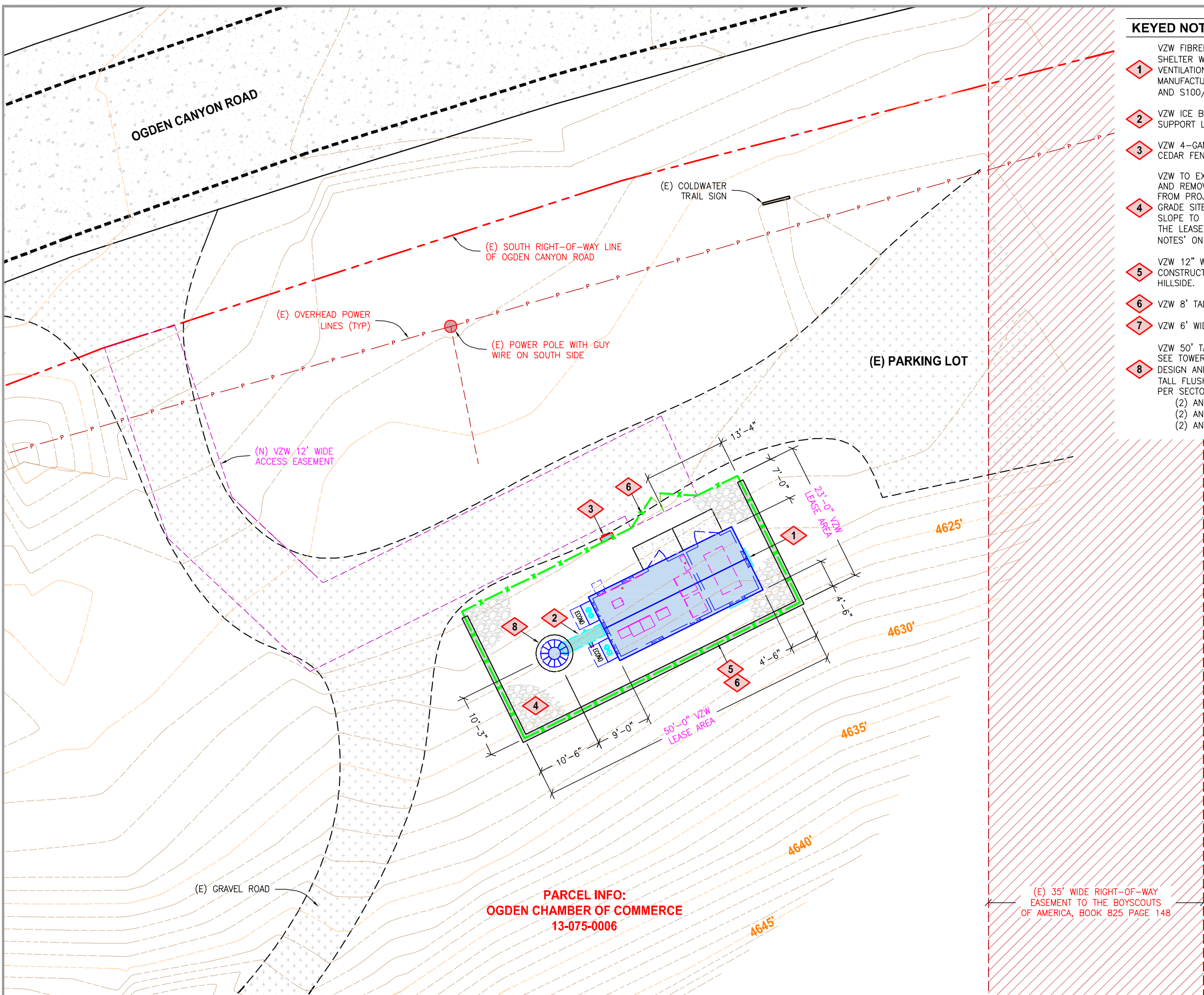
SHEET NUMBER
C100



**PARCEL INFO:
TBL DEVELOPMENT LLC
13-075-0008**

**PARCEL INFO:
OGDEN CHAMBER OF COMMERCE
13-075-0006**

**PARCEL INFO:
BOY SCOUTS OF AMERICA
13-075-0007**

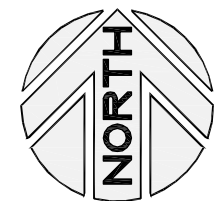


KEYED NOTES

- 1 VZW FIBREBOND 11'-6" X 26' PRE-FAB EQUIPMENT SHELTER WITH (2) HVAC UNITS AND (2) LOW PROFILE VENTILATION HOOD AS PROVIDED BY THE SHELTER MANUFACTURER, SEE C301/1 FOR EQUIPMENT LAYOUT AND S100/S101 FOR CONCRETE FOUNDATION.
- 2 VZW ICE BRIDGE WITH GPS ANTENNA MOUNTED TO SUPPORT LEG, SEE C300/1, C300/3, AND E200.
- 3 VZW 4-GANG METER BANK TO BE MOUNTED TO THE CEDAR FENCING PER MANUFACTURER.
- 4 VZW TO EXCAVATE MINIMUM NECESSARY TO GRUB SITE AND REMOVE SOD, ROOTS AND ALL UNSUITABLE SOIL FROM PROJECT AREA, THEN USE SELECTED FILL AND GRADE SITE (INSIDE THE RETAINING WALL) WITH A 5% SLOPE TO THE NORTH TO DRAIN THE WATER OUT OF THE LEASE AREA, SEE C300/2 AND 'SITE WORK NOTES' ON C302.
- 5 VZW 12" WIDE BY 7' TALL RETAINING WALL TO BE CONSTRUCTED TO BUILD THE VZW SITE INTO THE HILLSIDE.
- 6 VZW 8' TALL CEDAR FENCING.
- 7 VZW 6' WIDE BY 8' TALL CEDAR GATES, (2) TOTAL.
- 8 VZW 50' TALL MONOPOLE WITH CONCRETE FOUNDATION, SEE TOWER MANUFACTURER SHOP DRAWINGS FOR DESIGN AND SPECIFICATIONS. VZW WILL MOUNT (6) 8' TALL FLUSH MOUNT ANTENNAS UPON MONOPOLE, (2) PER SECTOR:
 (2) ANTENNAS AT A 46' CENTERLINE.
 (2) ANTENNAS AT A 37' CENTERLINE.
 (2) ANTENNAS AT A 28' CENTERLINE.

PARCEL INFO:
OGDEN CHAMBER OF COMMERCE
 13-075-0006

(E) 35' WIDE RIGHT-OF-WAY
 EASEMENT TO THE BOYSCOUTS
 OF AMERICA, BOOK 825 PAGE 148



VERIZON WIRELESS
 9656 SOUTH PROSPERITY ROAD
 WEST JORDAN, UTAH 84088



TECHNOLOGY ASSOCIATES

UTAH MARKET OFFICE
 9847 SOUTH 500 WEST
 SANDY, UTAH 84070

CORPORATE OFFICE
 5930 PRIESTLY DRIVE
 CARLSBAD, CALIFORNIA 92088

DRAWN BY: JAY C

CHECKED BY: NEFI G

REV	DATE	DESCRIPTION
6	08.27.2012	MOVED LEASE AREA
5	01.18.2012	REVISIONS PER CITY
4	01.11.2012	REVISIONS PER CITY
3	12.09.2011	REVISIONS PER CITY
2	10.25.2011	FAA UPDATE
1	09.15.2011	MOVED LEASE AREA
0	08.24.2011	ZONING DRAWINGS

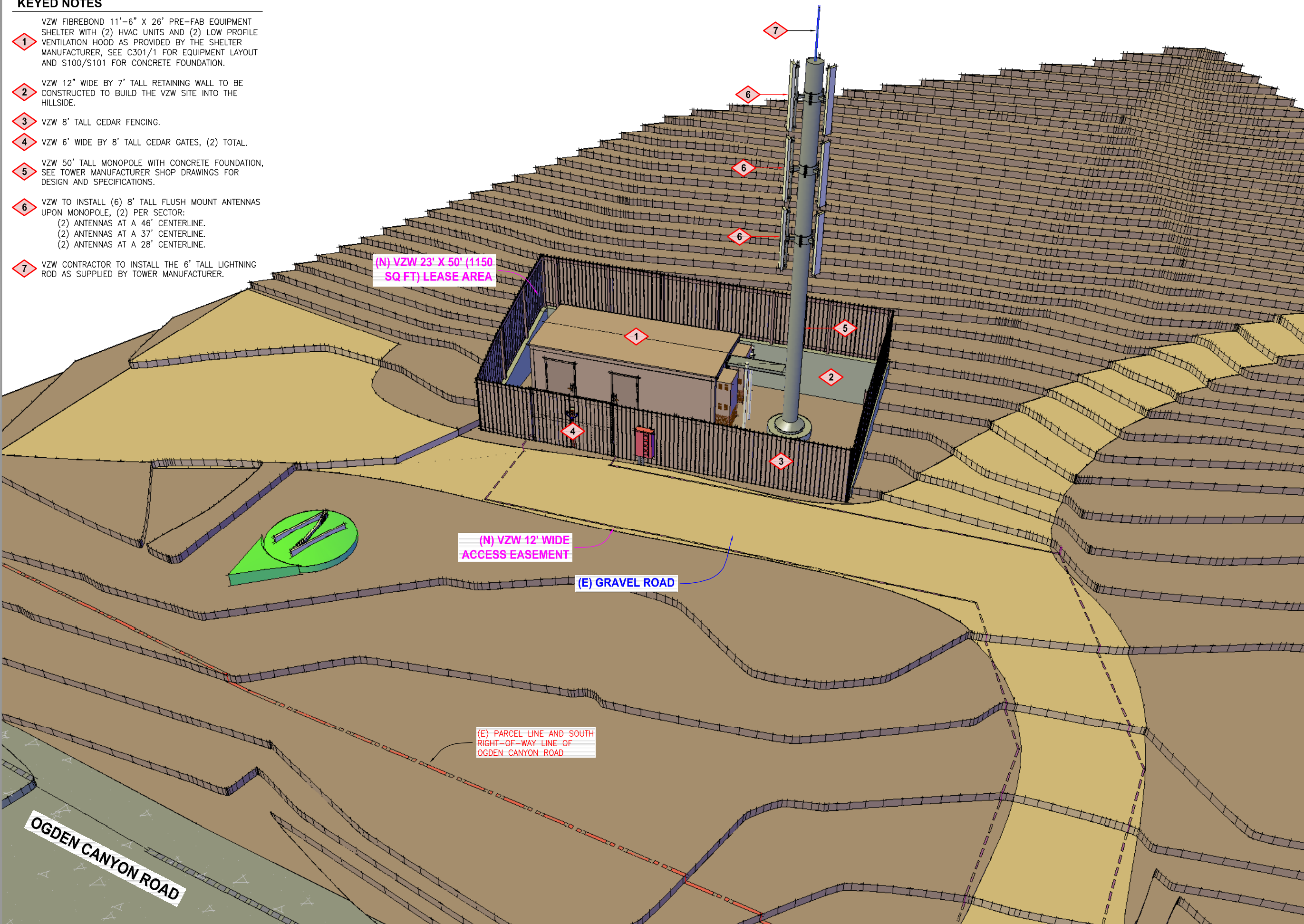
SAL - PEERY CAMP
 SW SEC 24, T6N, R1W
 OGDEN CANYON HWY
 OGDEN, UTAH 84401
 -- RAWLAND SITE --

SHEET TITLE
ENLARGED SITE PLAN

SHEET NUMBER
C101

KEYED NOTES

- 1 VZW FIBREBOND 11'-6" X 26' PRE-FAB EQUIPMENT SHELTER WITH (2) HVAC UNITS AND (2) LOW PROFILE VENTILATION HOOD AS PROVIDED BY THE SHELTER MANUFACTURER, SEE C301/1 FOR EQUIPMENT LAYOUT AND S100/S101 FOR CONCRETE FOUNDATION.
- 2 VZW 12" WIDE BY 7' TALL RETAINING WALL TO BE CONSTRUCTED TO BUILD THE VZW SITE INTO THE HILLSIDE.
- 3 VZW 8' TALL CEDAR FENCING.
- 4 VZW 6' WIDE BY 8' TALL CEDAR GATES, (2) TOTAL.
- 5 VZW 50' TALL MONOPOLE WITH CONCRETE FOUNDATION, SEE TOWER MANUFACTURER SHOP DRAWINGS FOR DESIGN AND SPECIFICATIONS.
- 6 VZW TO INSTALL (6) 8' TALL FLUSH MOUNT ANTENNAS UPON MONOPOLE, (2) PER SECTOR:
 (2) ANTENNAS AT A 46' CENTERLINE.
 (2) ANTENNAS AT A 37' CENTERLINE.
 (2) ANTENNAS AT A 28' CENTERLINE.
- 7 VZW CONTRACTOR TO INSTALL THE 6' TALL LIGHTNING ROD AS SUPPLIED BY TOWER MANUFACTURER.



(N) VZW 23' X 50' (1150 SQ FT) LEASE AREA

(N) VZW 12' WIDE ACCESS EASEMENT

(E) GRAVEL ROAD

(E) PARCEL LINE AND SOUTH RIGHT-OF-WAY LINE OF OGDEN CANYON ROAD

OGDEN CANYON ROAD



VERIZON WIRELESS
 9656 SOUTH PROSPERITY ROAD
 WEST JORDAN, UTAH 84088

TAEC
 Technology Associates Engineering Corporation
TECHNOLOGY ASSOCIATES

UTAH MARKET OFFICE
 9847 SOUTH 500 WEST
 SANDY, UTAH 84070

CORPORATE OFFICE
 5930 PRIESTLY DRIVE
 CARLSBAD, CALIFORNIA 92008

DRAWN BY: JAY C
 CHECKED BY: NEFI G

REV	DATE	DESCRIPTION
6	08.27.2012	MOVED LEASE AREA
5	01.18.2012	REVISIONS PER CITY
4	01.11.2012	REVISIONS PER CITY
3	12.09.2011	REVISIONS PER CITY
2	10.25.2011	FAA UPDATE
1	09.15.2011	MOVED LEASE AREA
0	08.24.2011	ZONING DRAWINGS

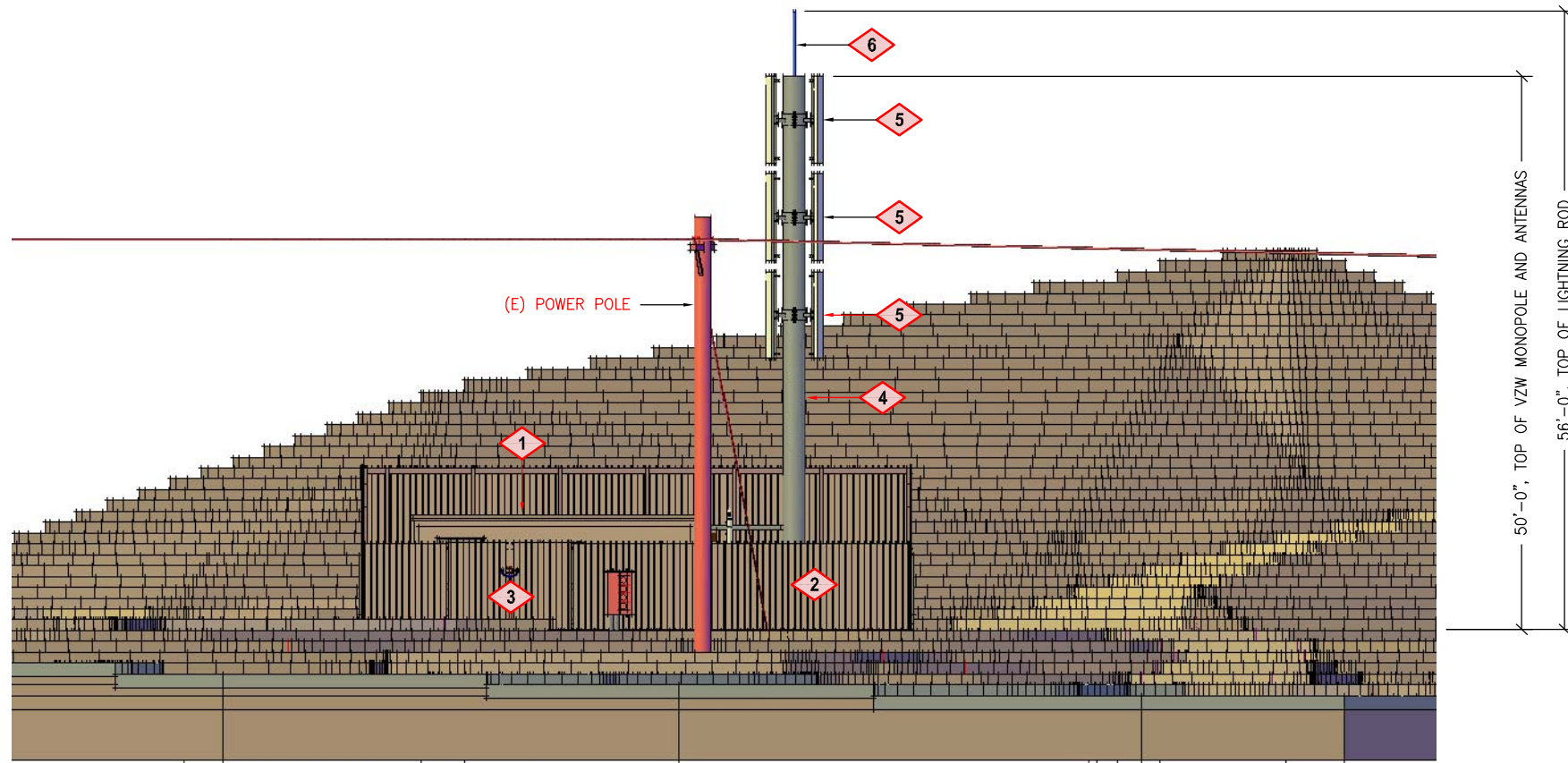
SAL - PEERY CAMP
 SW SEC 24, T6N, R1W
 OGDEN CANYON HWY
 OGDEN, UTAH 84401
 -- RAWLAND SITE --

SHEET TITLE
 SOUTHEASTERLY
 SITE ELEVATION

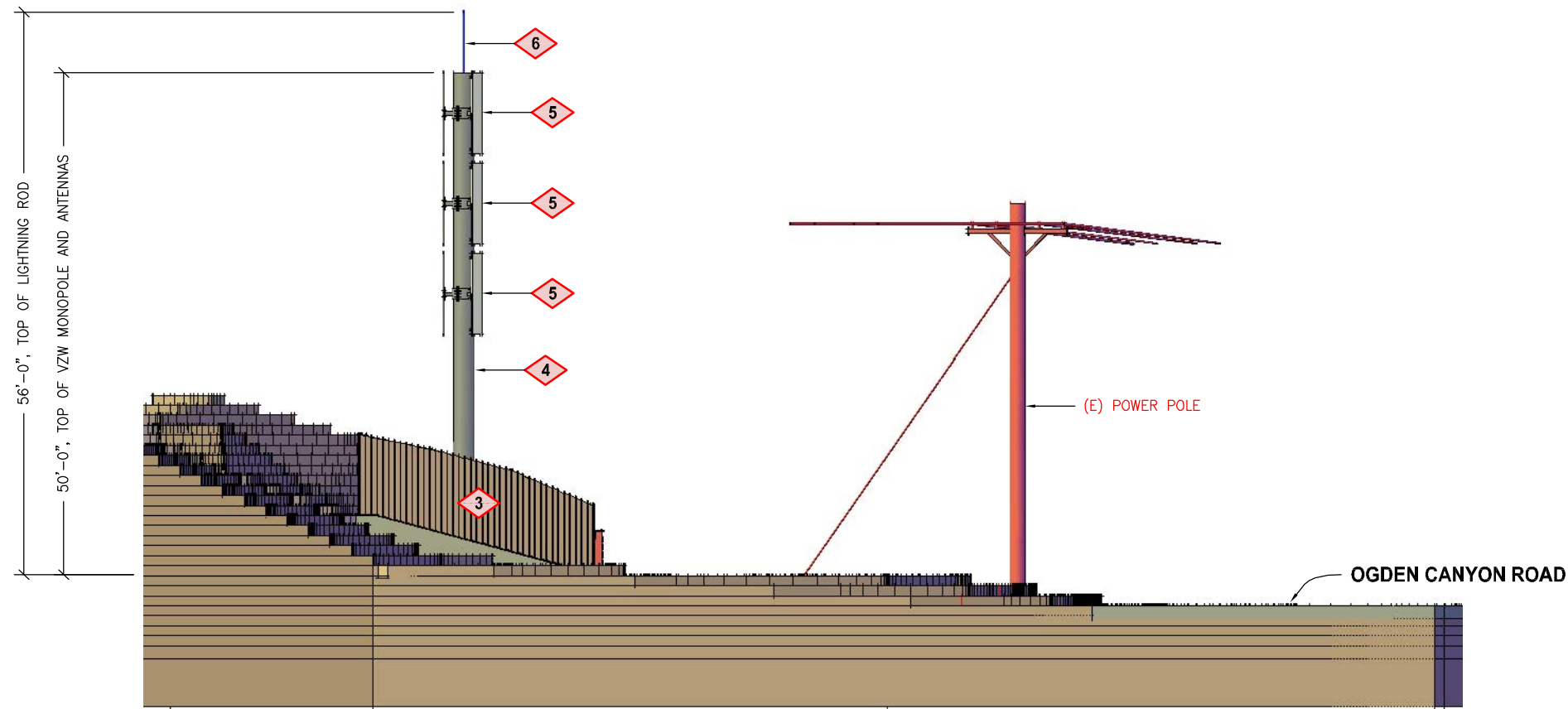
SHEET NUMBER
C200

KEYED NOTES

- 1 VZW FIBREBOND 11'-6" X 26' PRE-FAB EQUIPMENT SHELTER WITH (2) HVAC UNITS AND (2) LOW PROFILE VENTILATION HOOD AS PROVIDED BY THE SHELTER MANUFACTURER, SEE C301/1 FOR EQUIPMENT LAYOUT AND S100/S101 FOR CONCRETE FOUNDATION.
- 2 VZW 8' TALL CEDAR FENCING.
- 3 VZW 6' WIDE BY 8' TALL CEDAR GATES, (2) TOTAL.
- 4 VZW 50' TALL MONOPOLE WITH CONCRETE FOUNDATION, SEE TOWER MANUFACTURER SHOP DRAWINGS FOR DESIGN AND SPECIFICATIONS.
- 5 VZW TO INSTALL (6) 8' TALL FLUSH MOUNT ANTENNAS UPON MONOPOLE, (2) PER SECTOR:
 (2) ANTENNAS AT A 46' CENTERLINE.
 (2) ANTENNAS AT A 37' CENTERLINE.
 (2) ANTENNAS AT A 28' CENTERLINE.
- 6 VZW CONTRACTOR TO INSTALL THE 6' TALL LIGHTNING ROD AS SUPPLIED BY TOWER MANUFACTURER.



SITE ELEVATION - LOOKING SOUTH



SITE ELEVATION - LOOKING WEST



VERIZON WIRELESS
 9656 SOUTH PROSPERITY ROAD
 WEST JORDAN, UTAH 84088

TAEC
 Technology Associates Engineering Corporation
TECHNOLOGY ASSOCIATES

UTAH MARKET OFFICE
 9847 SOUTH 500 WEST
 SANDY, UTAH 84070

CORPORATE OFFICE
 5930 PRIESTLY DRIVE
 CARLSBAD, CALIFORNIA 92008

DRAWN BY: JAY C
CHECKED BY: NEFI G

REV	DATE	DESCRIPTION
6	08.27.2012	MOVED LEASE AREA
5	01.18.2012	REVISIONS PER CITY
4	01.11.2012	REVISIONS PER CITY
3	12.09.2011	REVISIONS PER CITY
2	10.25.2011	FAA UPDATE
1	09.15.2011	MOVED LEASE AREA
0	08.24.2011	ZONING DRAWINGS

SAL - PEERY CAMP
 SW SEC 24, T6N, R1W
 OGDEN CANYON HWY
 OGDEN, UTAH 84401
 -- RAWLAND SITE --

SHEET TITLE
 SOUTH AND WEST
 SITE ELEVATIONS

SHEET NUMBER
C201