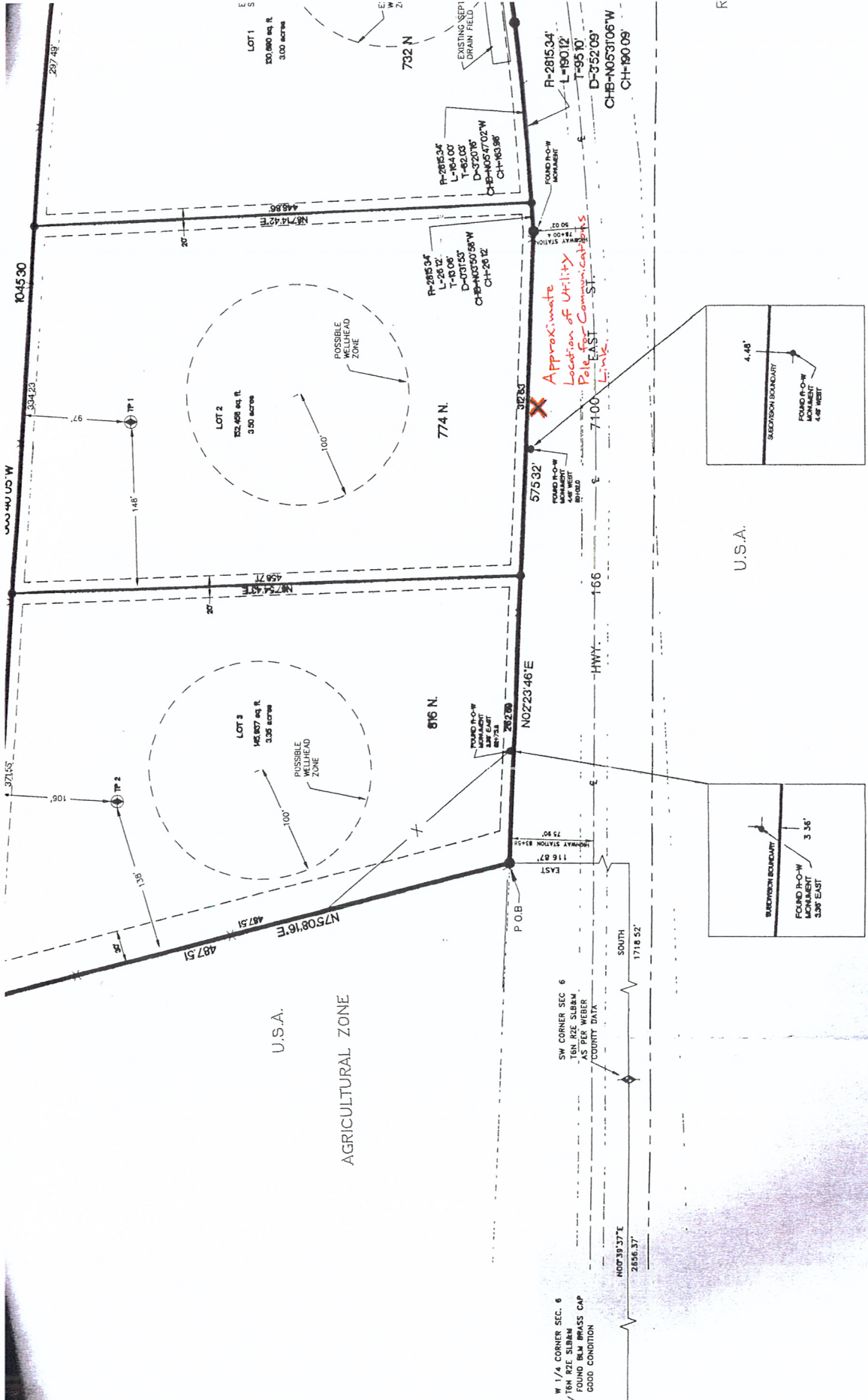


Public (Jare Feet)

STRUCTURE, 2% GRAVEL
 ; 3% GRAVEL
 10% GRAVEL

STRUCTURE, 2% GRAVEL
 ; 0% GRAVEL
 0% GRAVEL
 TURE, 0% GRAVEL



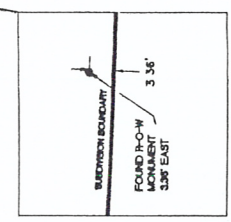
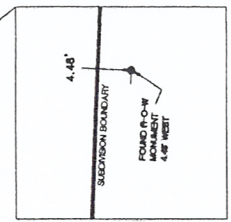
SW CORNER SEC. 6
 10\"/>

W. 1/4 CORNER SEC. 6
 10\"/>

AGRICULTURAL STATEMENT

AGRICULTURE IS THE PREFERRED USE IN THE AGRICULTURAL ZONES
 AGRICULTURAL OPERATIONS AS SPECIFIED IN THE ZONING ORDINANCE FOR A
 PARTICULAR ZONE ARE PERMITTED AT ANY TIME INCLUDING THE OPERATION
 OF FARM MACHINERY AND NO ALLOWED AGRICULTURAL USE SHALL BE SUBJECT

PLAT WERE COMPLETED AT THE
 OF SUBDIVIDING THEIR PROPERTY TO
 DARY LINE IS THE SOUTH LINE OF THE
 IG AN EXISTING FENCE, THE WEST LINE
 IE SOUTH LINE RUNS ALONG THE
 F 700 NORTH WAS ESTABLISHED BY



*Approximate
 Location of Utility
 Pole for Communications*

U.S.A.

R



GIS Disclaimer

This is not an official map but for reference use only. The data was compiled from the best sources available, so various errors from the sources may be inherent on the map. All boundaries shown on this map are approximate and should not be used for legal purposes. The County Department of Municipalities should be contacted. This map is a representation of ground features and is not a legal document of their locations. The scale represented is approximate, so this is NOT a Survey or Engineering grade map and should be used by no means as such. This map is the property of Weber County and should not be reproduced or made for any derivative or misuse of this map.