

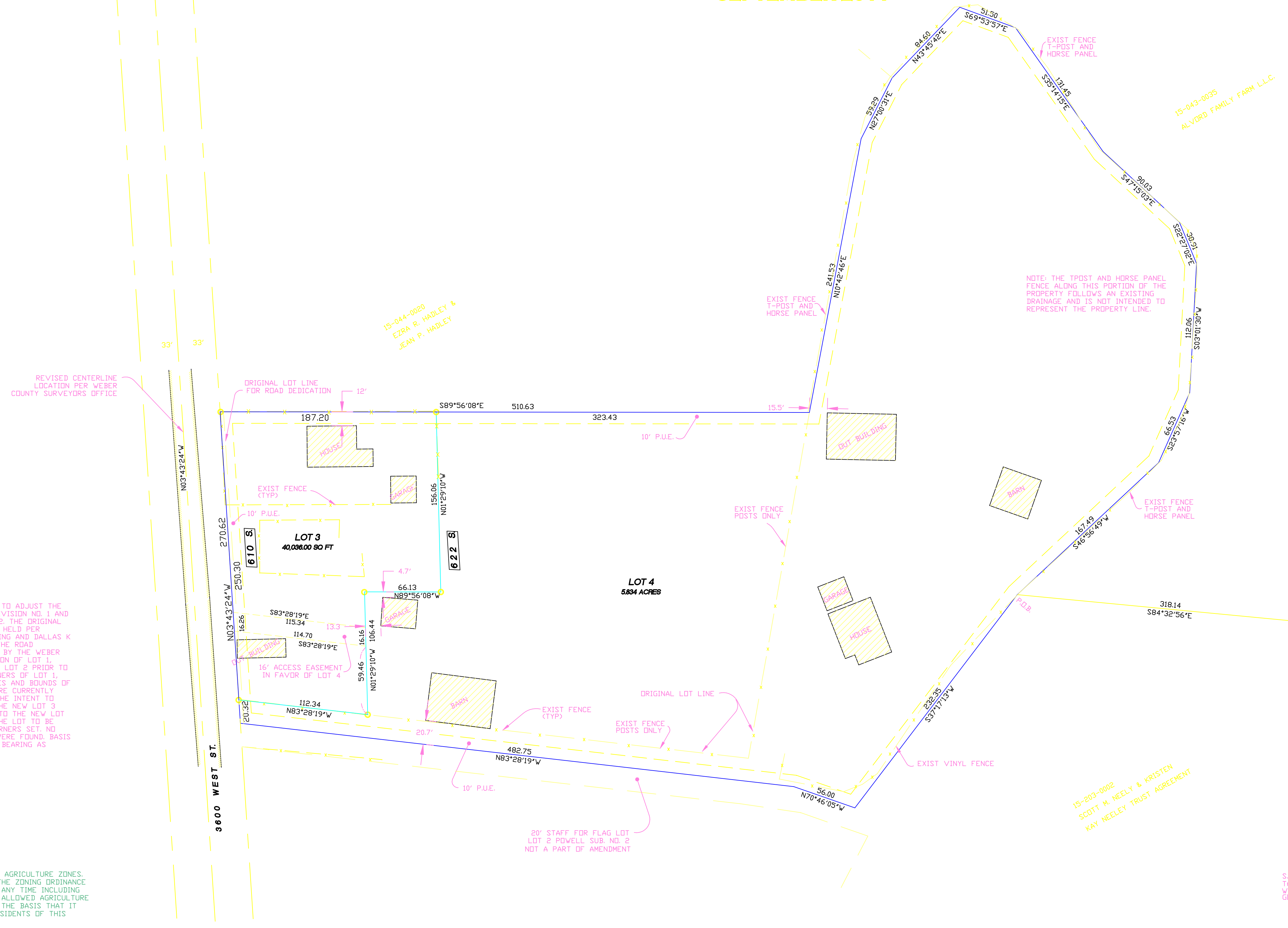
POWELL SUBDIVISION 1ST AMENDMENT

AMENDING LOT 1 OF POWELL SUBDIVISION NO. 1 AND A PART OF LOT 1 OF POWELL SUBDIVISION NO. 2

A PART OF THE EAST HALF OF SECTION 16, T. 6 N., R. 2W., S.L.B. & M.

WEBER COUNTY, UTAH

SEPTEMBER 2011



SURVEYOR'S CERTIFICATE

I DOUG L GRAHAM, HOLDING LICENSE NUMBER 172757 IN ACCORDANCE WITH TITLE 58, CHAPTER 22, PROFESSIONAL ENGINEERS AND LAND SURVEYORS LICENSING ACT, HAVE COMPLETED A SURVEY OF THE PROPERTY DESCRIBED ON THE PLAT IN ACCORDANCE WITH SECTION 17-23-17 AND HAVE VERIFIED ALL MEASUREMENTS AND PLACED MONUMENTS AS REPRESENTED ON THE PLAT.

I DO ALSO HEREBY CERTIFY THAT THIS PLAT OF POWELL SUBDIVISION 1ST AMENDMENT IN WEBER COUNTY, UTAH, HAS BEEN CORRECTLY DRAWN TO SCALE AND IS A TRUE AND CORRECT REPRESENTATION OF THE FOLLOWING DESCRIPTION OF LANDS INCLUDED IN SAID SUBDIVISION, BASED ON DATA COMPILED FROM RECORDS IN THE WEBER COUNTY RECORDERS OFFICE, WEBER COUNTY SURVEYORS OFFICE AND OF A SURVEY MADE ON THE GROUND, AND I FURTHER CERTIFY THAT ALL LOTS MEET CURRENT LOT WIDTH AND AREA REQUIREMENTS FOR WEBER COUNTY ZONING.

SIGNED THIS _____ DAY OF _____ 20__

OWNER'S DEDICATION

WE THE UNDERSIGNED OWNERS OF THE HEREIN DESCRIBED TRACT OF LAND, DO HEREBY SET APART AND SUBDIVIDE THE SAME INTO LOTS AND STREETS AS SHOWN HEREON AND NAME SAID TRACT POWELL SUBDIVISION 1ST AMENDMENT. DO HEREBY GRANT AND DEDICATE A PERPETUAL EASEMENT OVER LOT 3 IN FAVOR OF LOT 4 FOR THE PURPOSE OF INGRESS AND EGRESS AS DESIGNATED AND SHOWN UPON THIS PLAT AND ALSO DEDICATE AND GRANT TO WEBER COUNTY, UTAH, A PERPETUAL RIGHT AND EASEMENT OVER, UPON AND UNDER THE LANDS DESIGNATED HEREON AS PUBLIC UTILITY, STORM WATER DETENTION PONDS DRAINAGE EASEMENTS, THE SAME TO BE USED FOR THE INSTALLATION, MAINTENANCE AND OPERATION OF PUBLIC UTILITY SERVICE LINES, STORM DRAINAGE FACILITIES OR FOR THE PERPETUAL PRESERVATION OF WATER CHANNELS IN THEIR NATURAL STATE WHICHEVER IS APPLICABLE AS MAY BE AUTHORIZED BY THE GOVERNING AUTHORITY, WITH NO BUILDINGS OR STRUCTURES BEING ERECTED WITHIN SUCH EASEMENTS.

SIGNED THIS _____ DAY OF _____ 20__

ACKNOWLEDGMENT

STATE OF UTAH) ss
COUNTY OF WEBER)

ON THIS _____ DAY OF _____ 20__, PERSONALLY APPEARED BEFORE ME, THE UNDERSIGNED NOTARY PUBLIC, THE SIGNERS OF THE ABOVE OWNERS DEDICATION _____ IN NUMBER, WHO DULY ACKNOWLEDGED TO ME THAT THEY SIGNED IT FREELY AND VOLUNTARILY AND FOR THE PURPOSES THEREIN MENTIONED.

COMMISSION EXPIRES _____ NOTARY PUBLIC _____

BOUNDARY DESCRIPTION

A PART OF THE EAST ONE HALF OF SECTION 16, TOWNSHIP 6 NORTH, RANGE 2 WEST, SALT LAKE BASE AND MERIDIAN, U.S. SURVEY, BEGINNING AT A POINT 116.31 FEET SOUTH 00°48'58" WEST ALONG THE SECTION LINE AND 318.14 FEET NORTH 84°32'56" WEST FROM THE EAST QUARTER CORNER OF SAID SECTION 15, RUNNING THENCE SOUTH 37°17'13" WEST 232.35 FEET; THENCE NORTH 70°46'05" WEST 56.00 FEET; THENCE NORTH 81°28'19" WEST 482.75 FEET; THENCE NORTH 03°43'24" WEST 270.62 FEET; THENCE SOUTH 89°56'08" EAST 510.63 FEET; THENCE NORTH 10°42'46" EAST 241.53 FEET; THENCE NORTH 27°00'31" EAST 59.29 FEET; THENCE NORTH 43°45'42" EAST 84.60 FEET; THENCE SOUTH 69°53'57" EAST 51.50 FEET; THENCE SOUTH 35°14'15" EAST 131.45 FEET; THENCE SOUTH 47°15'03" EAST 90.03 FEET; THENCE SOUTH 22°27'02" EAST 38.91 FEET; THENCE SOUTH 03°01'30" WEST 112.06 FEET; THENCE SOUTH 23°57'16" WEST 66.53 FEET; THENCE SOUTH 46°56'49" WEST 167.49 FEET TO THE POINT OF BEGINNING. CONTAINS 6.753 ACRES

SCALE: 1" = 50'

5/8"Ø x 24" REBAR WITH CAP STAMPED 172757

NARRATIVE

THE PURPOSE OF THIS SURVEY WAS TO ADJUST THE LINE BETWEEN LOT 1, POWELL SUBDIVISION NO. 1 AND LOT 1 OF POWELL SUBDIVISION NO. 2, THE ORIGINAL PLAT BEARING AND DISTANCES WERE HELD PER SURVEYS BY GREAT BASIN ENGINEERING AND DALLAS K BUTTARS, WITH THE EXCEPTION OF THE ROAD LOCATION WHICH HAS BEEN REVISED BY THE WEBER COUNTY SURVEYORS OFFICE. A PORTION OF LOT 1, PHASE 2 HAD BEEN TRANSFERRED TO LOT 2 PRIOR TO THE PURCHASE BY THE CURRENT OWNERS OF LOT 1, PHASE 2 AND THE SALE WAS A METES AND BOUNDS OF A PORTION OF LOT 1, THE 2 LOTS ARE CURRENTLY UNDER THE SAME OWNERSHIP WITH THE INTENT TO SELL THE NEW CONFIGURATION OF THE NEW LOT 3 AND ATTACH THE REMAINING ACREAGE TO THE NEW LOT 4. AT THE OWNERS REQUEST ONLY THE LOT TO BE SOLD WILL HAVE NEW PROPERTY CORNERS SET, NO CORNERS FROM THE PRIOR SURVEY WERE FOUND. BASIS OF BEARINGS IS UTAH STATE PLANE BEARING AS SHOWN.

AGRICULTURAL NOTE

AGRICULTURE IS THE PREFERRED USE IN THE AGRICULTURE ZONES. AGRICULTURE OPERATIONS AS SPECIFIED IN THE ZONING ORDINANCE FOR A PARTICULAR ZONE ARE PERMITTED AT ANY TIME INCLUDING THE OPERATION OF FARM MACHINERY AND NO ALLOWED AGRICULTURE USE SHALL BE SUBJECT TO RESTRICTION ON THE BASIS THAT IT INTERFERES WITH ACTIVITIES OF FUTURE RESIDENTS OF THIS SUBDIVISION.

WEBER-MORGAN HEALTH DEPARTMENT

I HEREBY CERTIFY THAT THE SOILS, PERCOLATION RATES, AND SITE CONDITION FOR THIS SUBDIVISION HAVE BEEN INVESTIGATED BY THIS OFFICE AND ARE APPROVED FOR ON-SITE WASTEWATER DISPOSAL SYSTEMS.

SIGNED THIS _____ DAY OF _____ 20__

DIRECTOR, WEBER-MORGAN HEALTH DEPARTMENT.

WEBER COUNTY PLANNING COMMISSION APPROVAL

THIS IS TO CERTIFY THAT THIS SUBDIVISION PLAT WAS DULY APPROVED BY THE WEBER COUNTY PLANNING COMMISSION ON THE DAY OF _____ 20__

SIGNATURE

WEBER COUNTY ENGINEER

I HEREBY CERTIFY THAT THE REQUIRED PUBLIC IMPROVEMENT STANDARDS AND DRAWINGS FOR THIS SUBDIVISION CONFORM WITH COUNTY STANDARDS AND THE AMOUNT OF THE FINANCIAL GUARANTEE IS SUFFICIENT FOR THE INSTALLATION OF THESE IMPROVEMENTS.

SIGNED THIS _____ DAY OF _____ 20__

SIGNATURE

WEBER COUNTY SURVEYOR

I HEREBY CERTIFY THAT THE WEBER COUNTY SURVEYOR'S OFFICE HAS REVIEWED THIS PLAT FOR MATHEMATICAL CORRECTNESS, SECTION CORNER DATA, AND FOR HARMONY WITH LINES AND MONUMENTS ON RECORD IN COUNTY OFFICES. THE APPROVAL OF THIS PLAT BY THE WEBER COUNTY SURVEYOR DOES NOT RELIEVE THE LICENSED LAND SURVEYOR WHO EXECUTED THIS PLAT FROM THE RESPONSIBILITIES AND/OR LIABILITIES ASSOCIATED THEREWITH.

SIGNED THIS _____ DAY OF _____ 20__

SIGNATURE

WEBER COUNTY ATTORNEY

I HAVE EXAMINED THE FINANCIAL GUARANTEE AND OTHER DOCUMENTS ASSOCIATED WITH THIS SUBDIVISION PLAT AND IN MY OPINION THEY CONFORM WITH THE COUNTY ORDINANCE APPLICABLE THERETO AND NOW IN FORCE AND AFFECT.

SIGNED THIS _____ DAY OF _____ 20__

SIGNATURE

WEBER COUNTY COMMISSION ACCEPTANCE

THIS IS TO CERTIFY THAT THIS SUBDIVISION PLAT, THE DEDICATION OF STREETS AND OTHER PUBLIC WAYS AND FINANCIAL GUARANTEE OF PUBLIC IMPROVEMENTS ASSOCIATED WITH THIS SUBDIVISION, THEREON ARE HEREBY APPROVED AND ACCEPTED BY THE COMMISSIONERS OF WEBER COUNTY, UTAH THIS _____ DAY OF _____ 20__.

ATTEST:
TITLE: CHAIRMAN, WEBER COUNTY COMMISSION

DEVELOPER: LORI LONG
622 S. 3800 W.
OGDEN, UT. 84404
PH 801-391-2633

LANDMARK SURVEYING, INC. A COMPLETE LAND SURVEYING SERVICE 4646 S. 3500 W. #A-3, WEST HAVEN, UTAH 84401 PHONE 801-731-4075 FAX 801-731-8506	
CLIENT: LORI LONG	
LOCATION: PART OF EAST 1/2 OF SEC. 16, T.6N., R.2W., S.L.B.&M.	
SURVEYED: MAY 2004	
REVISIONS:	DRAWN BY: DLG
11-22-11	CHECKED BY:
01-24-12	DATE: 09-12-11
	FILE: 3230SUB

WEBER COUNTY RECORDER	
ENTRY # _____	FEE _____
FILED FOR RECORD & RECORDED	
THIS _____ DAY OF _____ 20__	
AT _____	IN BOOK _____ OF _____
PAGE _____	
WEBER COUNTY RECORDER	
BY _____	DEPUTY _____