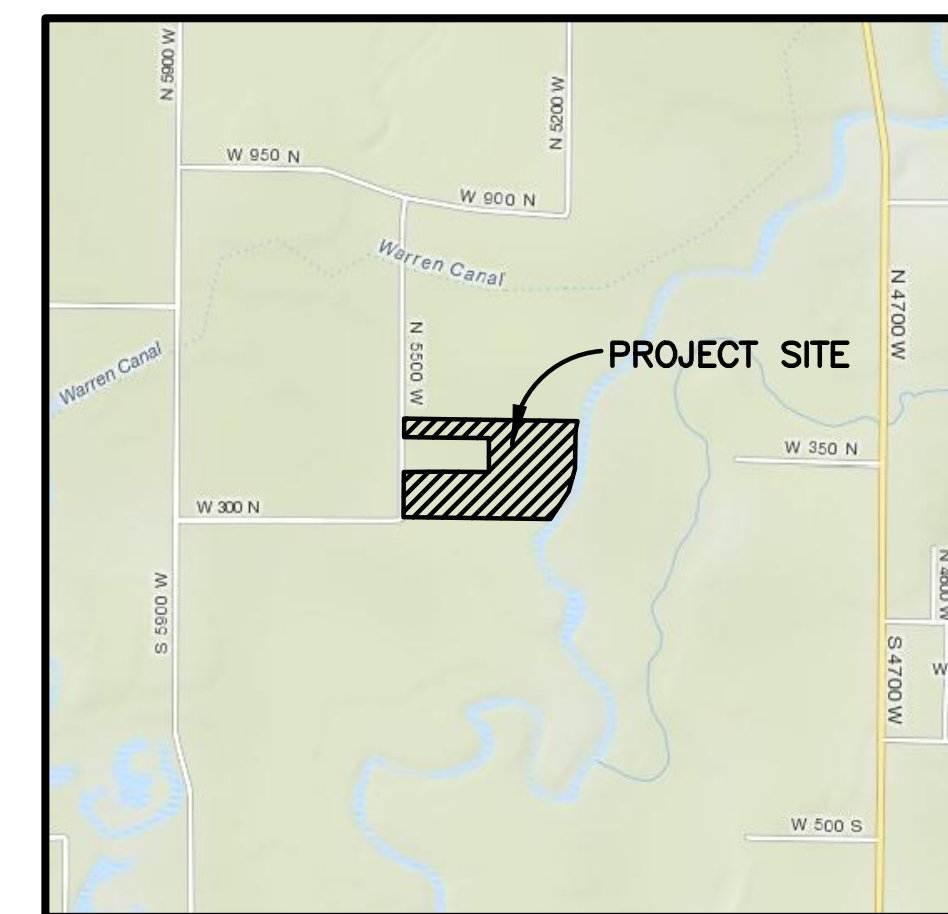
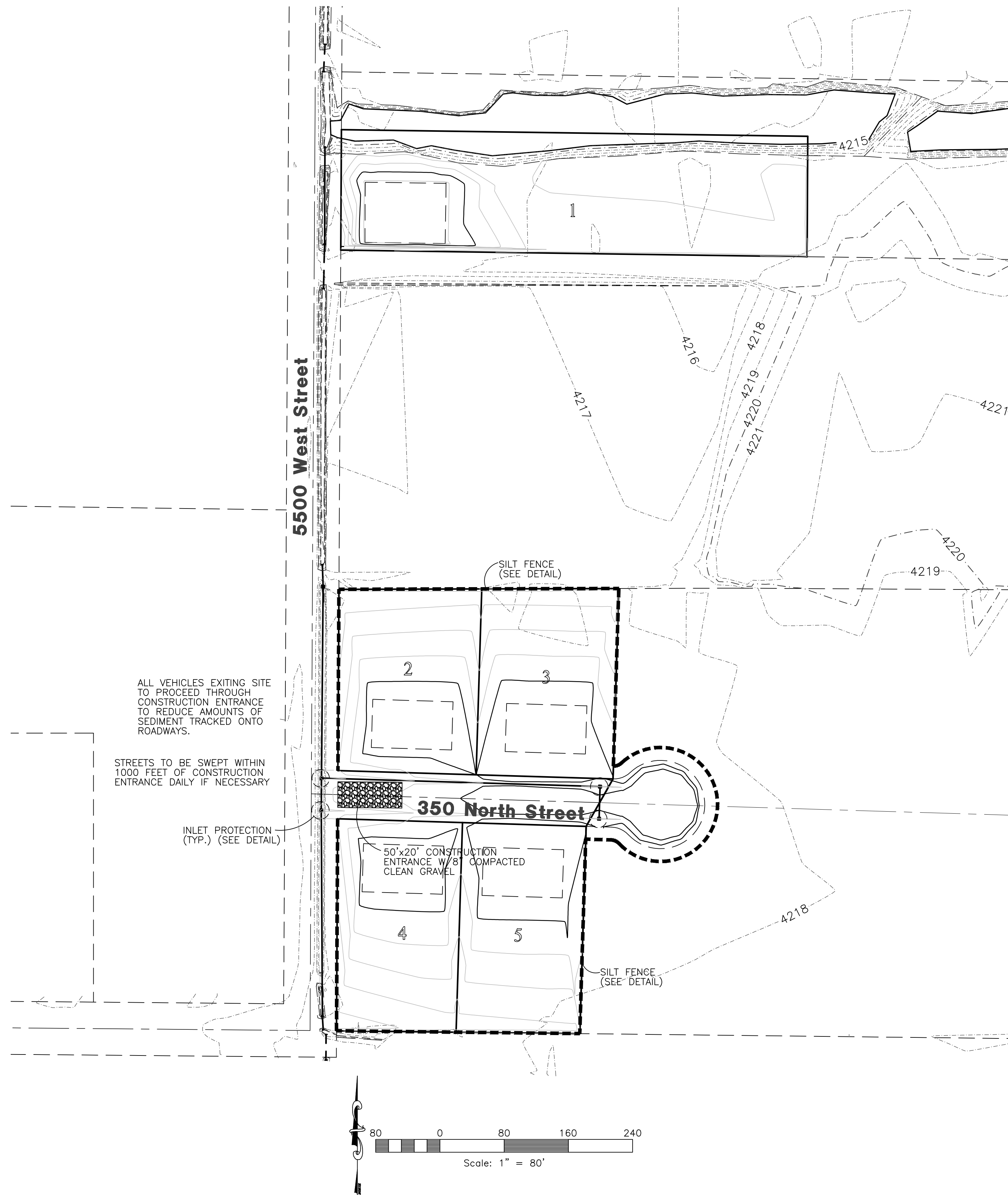


LISA ESTATES SUBDIVISION Phase-1 & Phase-2 Storm Water Pollution Prevention Plan Exhibit

WARREN, WEBER COUNTY, UTAH
MARCH, 2011



Vicinity Map
NOT TO SCALE

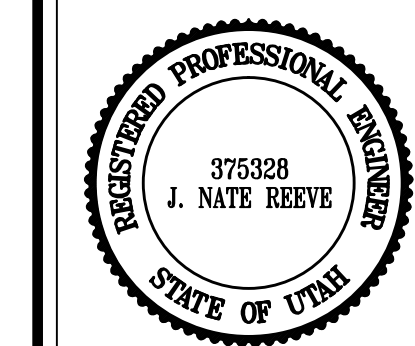


| Construction Activity Schedule | |
|---|-----------------------------|
| - PROJECT LOCATION..... | WARREN, WEBER COUNTY, UTAH |
| - PROJECT BEGINNING DATE..... | MARCH 2011 |
| - BMP'S DEPLOYMENT DATE..... | MARCH 2011 |
| - STORM WATER MANAGEMENT CONTACT / INSPECTOR..... | ALLAN KARRAS (801) 564-0909 |
| - SPECIFIC CONSTRUCTION SCHEDULE INCLUDING BMP CONSTRUCTION SCHEDULE TO BE INCLUDED WITH SWPPP BY OWNER/DEVELOPER | |

| DATE | DESCRIPTION |
|---------|--------------------|
| 4-14-11 | RH County Comments |
| 6-18-11 | RH County Comments |
| 9-29-11 | RH County Comments |
| 6-29-12 | RH County Comments |
| 8-01-12 | RH County Comments |
| 9-25-12 | RH County Comments |
| 2-28-13 | RH County Comments |

**Lisa Estates Subdivision
Phase 1 & 2**
WARREN, WEBER COUNTY, UTAH

**Storm Water Pollution
Prevention Plan Exhibit**



Project Info.
Engineer: J. NATE REEVE, P.E.
Drafted: R. HANSEN
Begin Date: MARCH 18, 2011
Name: LISA ESTATES SUBDIVISION PHASE 1 & 2
Number: 1714-27