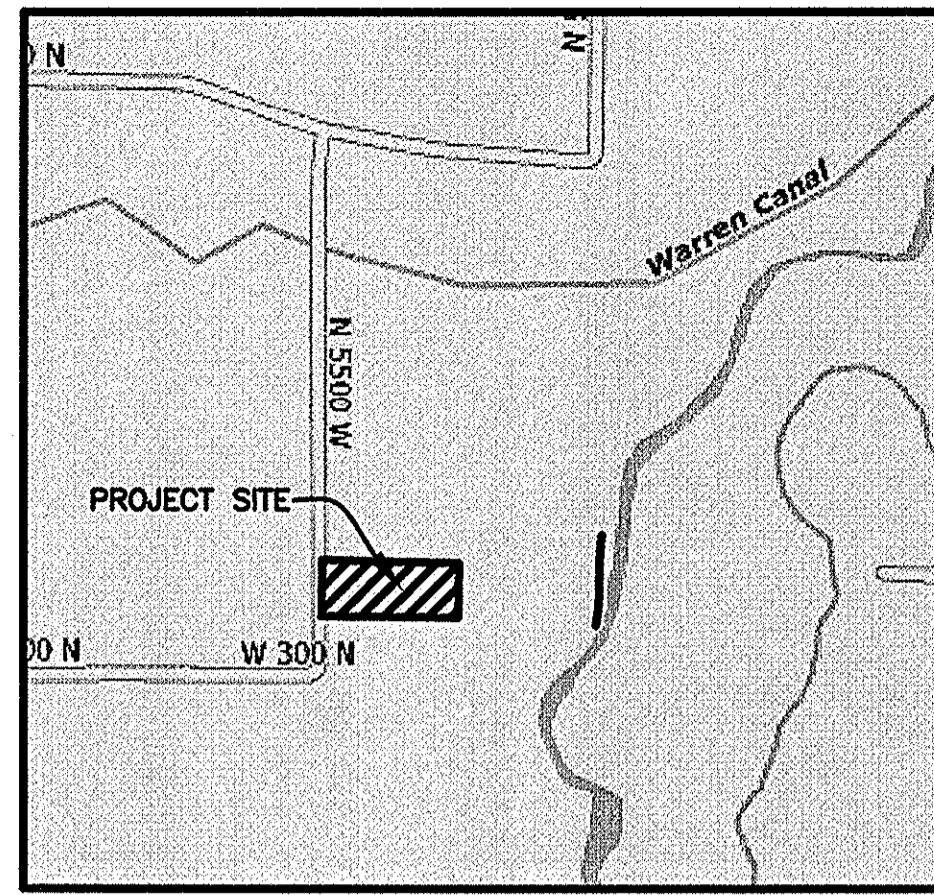


# LISA ESTATES SUBDIVISION PHASE 1

PART OF THE SOUTHEAST QUARTER OF SECTION 7, TOWNSHIP 6 NORTH, RANGE 2 WEST, SALT LAKE BASE AND MERIDIAN, U.S. SURVEY  
 WEBER COUNTY, UTAH  
 MARCH, 2011



VICINITY MAP  
 NOT TO SCALE

## BOUNDARY DESCRIPTION

PART OF THE SOUTHEAST QUARTER OF SECTION 7, TOWNSHIP 6 NORTH, RANGE 2 WEST, SALT LAKE BASE AND MERIDIAN, U.S. SURVEY, DESCRIBED AS FOLLOWS:

BEGINNING AT A POINT ON THE CENTERLINE OF 5500 WEST STREET, SAID POINT BEING S00°18'53"W 1559.26 FEET FROM THE CENTER OF SECTION 7; THENCE S89°11'22"E 613.82 FEET; THENCE S00°18'53"W 150.00 FEET; THENCE N89°11'22"W 613.82 FEET; THENCE N00°18'53"E 150.00 FEET TO THE POINT OF BEGINNING.

CONTAINING 92069 SQUARE FEET AND 2.11 ACRES

## BASIS OF BEARINGS

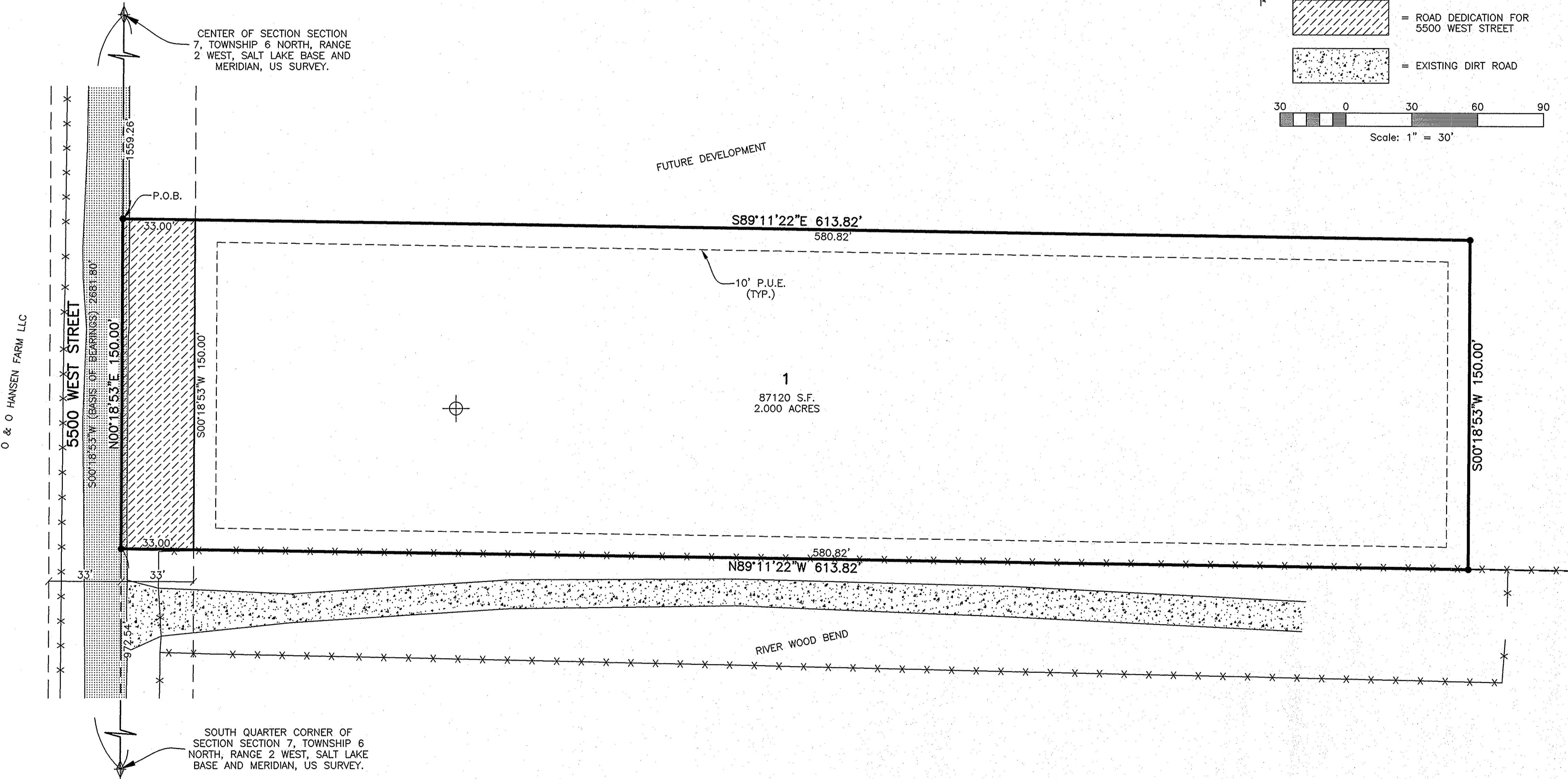
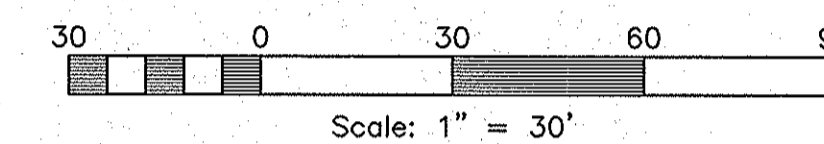
THE BASIS OF BEARINGS FOR THIS PLAT IS THE SECTION LINE BETWEEN THE CENTER OF SECTION 7 AND THE SOUTH QUARTER CORNER OF SECTION 7, TOWNSHIP 6 NORTH, RANGE 2 WEST, SALT LAKE BASE AND MERIDIAN, U.S. SURVEY. SHOWN HEREON AS: S00°18'53"W

## NARRATIVE

THE PURPOSE OF THIS PLAT IS TO DIVIDE THE BELOW DESCRIBED PROPERTY INTO LOTS AND STREETS AS SHOWN. ALL BOUNDARY CORNERS TO BE SET WITH A 5/8" X 24" REBAR AND RED PLASTIC CAP STAMPED "REEVE & ASSOCIATES". ALL FRONT LOT CORNERS TO BE SET WITH A LEAD PLUG IN THE TOP BACK OF CURB AT THE EXTENSION OF THE SIDE LOT LINES.

## LEGEND

- = SECTION CORNER
- = 5/8" X 24" REBAR AND RED PLASTIC CAP TO BE SET STAMPED "REEVE & ASSOCIATES"
- = TEST PIT LOCATION
- = BOUNDARY LINE
- = ADJOINING PROPERTY
- = EASEMENTS
- = SECTION TIE LINE
- = EXISTING FENCE LINE
- = EXISTING PAVEMENT
- = ROAD DEDICATION FOR 5500 WEST STREET
- = EXISTING DIRT ROAD

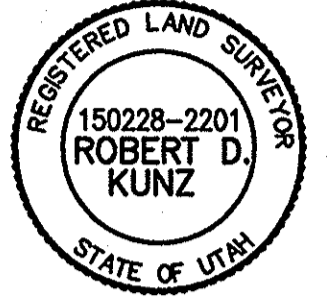


## SURVEYOR'S CERTIFICATE

I, **ROBERT D. KUNZ**, DO HEREBY CERTIFY THAT I AM A REGISTERED PROFESSIONAL LAND SURVEYOR IN THE STATE OF UTAH IN ACCORDANCE WITH TITLE 58, CHAPTER 22, PROFESSIONAL ENGINEERS AND LAND SURVEYORS ACT; AND THAT I HAVE COMPLETED A SURVEY OF THE PROPERTY DESCRIBED ON THIS PLAT IN ACCORDANCE WITH SECTION 17-23-17 AND HAVE VERIFIED ALL MEASUREMENTS, AND HAVE PLACED MONUMENTS AS REPRESENTED ON THIS PLAT, AND THAT THIS PLAT OF **LISA ESTATES SUBDIVISION PHASE 1** IN **WEBER COUNTY**, UTAH, HAS BEEN DRAWN CORRECTLY TO THE DESIGNATED SCALE AND IS A TRUE AND CORRECT REPRESENTATION OF THE HEREIN DESCRIBED LANDS INCLUDED IN SAID SUBDIVISION, BASED UPON DATA COMPILED FROM RECORDS IN THE **WEBER COUNTY** RECORDER'S OFFICE AND FROM SAID SURVEY MADE BY ME ON THE GROUND. I FURTHER CERTIFY THAT THE REQUIREMENTS OF ALL APPLICABLE STATUTES AND ORDINANCES OF **WEBER COUNTY** CONCERNING ZONING REQUIREMENTS REGARDING LOT MEASUREMENTS HAVE BEEN COMPLIED WITH.

SIGNED THIS \_\_\_\_\_ DAY OF \_\_\_\_\_, 20\_\_\_\_.

150228  
 UTAH LICENSE NUMBER      **ROBERT D. KUNZ**



## OWNERS DEDICATION AND CERTIFICATION

WE THE UNDERSIGNED OWNERS OF THE HEREIN DESCRIBED TRACT OF LAND, DO HEREBY SET APART AND SUBDIVIDE THE SAME INTO LOTS AND STREETS AS SHOWN ON THE PLAT AND NAME SAID TRACT **LISA ESTATES SUBDIVISION PHASE 1**, AND DO HEREBY DEDICATE TO PUBLIC USE ALL THOSE PARTS OR PORTIONS OF SAID TRACT OF LAND DESIGNATED AS STREETS, THE SAME TO BE USED AS PUBLIC THOROUGHFARES AND ALSO TO GRANT AND DEDICATE A PERPETUAL RIGHT AND EASEMENT OVER, UPON AND UNDER THE LANDS DESIGNATED HEREON AS PUBLIC UTILITY, STORM WATER DETENTION PONDS DRAINAGE EASEMENTS AND CANAL MAINTENANCE EASEMENT, THE SAME TO BE USED FOR THE INSTALLATION MAINTENANCE AND OPERATION OF PUBLIC UTILITY SERVICE LINE, STORM DRAINAGE FACILITIES, IRRIGATION CANALS OR FOR THE PERPETUAL PRESERVATION OF WATER CHANNELS IN THEIR NATURAL STATE WHICHEVER IS APPLICABLE AS MAY BE AUTHORIZED BY THE GOVERNING AUTHORITY, WITH NO BUILDINGS OR STRUCTURES BEING ERRECTED WITHIN SUCH EASEMENTS

SIGNED THIS \_\_\_\_\_ DAY OF \_\_\_\_\_, 20\_\_\_\_.

## ACKNOWLEDGMENT

STATE OF UTAH )ss.  
 COUNTY OF \_\_\_\_\_ )  
 ON THE \_\_\_\_\_ DAY OF \_\_\_\_\_, 20\_\_\_\_, PERSONALLY APPEARED BEFORE ME, THE UNDERSIGNED NOTARY PUBLIC, \_\_\_\_\_ (AND) \_\_\_\_\_ SIGNER(S) OF THE ABOVE OWNER'S DEDICATION AND CERTIFICATION, WHO BEING BY ME DULY SWORN, DID ACKNOWLEDGE TO ME \_\_\_\_\_ SIGNED IT FREELY, VOLUNTARILY, AND FOR THE PURPOSES THEREIN MENTIONED.  
 \_\_\_\_\_ COMMISSION EXPIRES \_\_\_\_\_ NOTARY PUBLIC

## ACKNOWLEDGMENT

STATE OF UTAH )ss.  
 COUNTY OF \_\_\_\_\_ )  
 ON THE \_\_\_\_\_ DAY OF \_\_\_\_\_, 20\_\_\_\_, PERSONALLY APPEARED BEFORE ME, THE UNDERSIGNED NOTARY PUBLIC, \_\_\_\_\_ (AND) \_\_\_\_\_ BEING BY ME DULY SWORN, ACKNOWLEDGED TO ME THEY ARE \_\_\_\_\_ OF SAID CORPORATION AND THAT THEY SIGNED THE ABOVE OWNER'S DEDICATION AND CERTIFICATION FREELY, VOLUNTARILY, AND IN BEHALF OF SAID CORPORATION FOR THE PURPOSES THEREIN MENTIONED.  
 \_\_\_\_\_ COMMISSION EXPIRES \_\_\_\_\_ NOTARY PUBLIC

<p><b>Reeve &amp; Associates, Inc.</b>                  4155 S. HARRISON BLVD., SUITE 310, OGDEN, UTAH 84403                  TEL: (801) 621-3100 FAX: (801) 621-2666 www.reeve-associates.com</p>	Project Info.
	Surveyor: R. KUNZ
	Designer: N. ANDERSON
	Begin Date: 03-10-11
	Name: LISA ESTATES SUBDIVISION PHASE 1
	Number: 1714-27
Revision: _____	
Scale: 1"=30'	
Checked: _____	

**WEBER COUNTY PLANNING COMMISSION APPROVAL**  
 THIS IS TO CERTIFY THAT THIS SUBDIVISION PLAT WAS DULY APPROVED BY THE WEBER COUNTY PLANNING COMMISSION. SIGNED THIS \_\_\_\_\_ DAY OF \_\_\_\_\_, 20\_\_\_\_.  
 \_\_\_\_\_  
 CHAIRMAN, WEBER COUNTY PLANNING COMMISSION

**WEBER COUNTY ENGINEER**  
 I HEREBY CERTIFY THAT THE REQUIRED PUBLIC IMPROVEMENT STANDARDS AND DRAWINGS FOR THIS SUBDIVISION CONFORM WITH THE COUNTY STANDARDS AND THE AMOUNT OF THE FINANCIAL GUARANTEE IS SUFFICIENT FOR THE INSTALLATION OF THESE IMPROVEMENTS.  
 \_\_\_\_\_  
 WEBER COUNTY ENGINEER

**WEBER COUNTY COMMISSION ACCEPTANCE**  
 THIS IS TO CERTIFY THAT THIS SUBDIVISION PLAT, THE DEDICATION OF STREETS AND OTHER PUBLIC WAYS AND FINANCIAL GUARANTEE OF PUBLIC IMPROVEMENTS ASSOCIATED WITH THIS SUBDIVISION, THEREON ARE HEREBY APPROVED AND ACCEPTED BY THE COMMISSIONERS OF WEBER COUNTY, UTAH.  
 SIGNED THIS \_\_\_\_\_ DAY OF \_\_\_\_\_, 20\_\_\_\_.  
 \_\_\_\_\_  
 CHAIRMAN, WEBER COUNTY COMMISSION  
 ATTEST

**WEBER COUNTY SURVEYOR**  
 I HEREBY CERTIFY THAT THE WEBER COUNTY SURVEYOR'S OFFICE HAS REVIEWED THIS PLAT FOR MATHEMATICAL CORRECTNESS, SECTION CORNER DATA, AND FOR HARMONY WITH LINES AND MONUMENTS ON RECORD IN COUNTY OFFICES. THE APPROVAL OF THIS PLAT BY THE WEBER COUNTY SURVEYOR DOES NOT RELIEVE THE LICENSED LAND SURVEYOR WHO EXECUTED THIS PLAT FROM THE RESPONSIBILITIES AND/OR LIABILITIES ASSOCIATED THEREWITH.  
 SIGNED THIS \_\_\_\_\_ DAY OF \_\_\_\_\_, 20\_\_\_\_.  
 \_\_\_\_\_  
 WEBER COUNTY SURVEYOR

I HAVE EXAMINED THE FINANCIAL GUARANTEE AND OTHER DOCUMENTS ASSOCIATED WITH THIS SUBDIVISION PLAT, AND IN MY OPINION THEY CONFORM WITH THE COUNTY ORDINANCE APPLICABLE THERETO AND NOW IN FORCE AND AFFECT.  
 SIGNED THIS \_\_\_\_\_ DAY OF \_\_\_\_\_, 20\_\_\_\_.  
 \_\_\_\_\_  
 WEBER COUNTY ATTORNEY

**WEBER-MORGAN HEALTH DEPARTMENT**  
 I HEREBY CERTIFY THAT THE SOILS, PERCOLATION RATES, AND SITE CONDITIONS FOR THIS SUBDIVISION HAVE BEEN INVESTIGATED BY THIS OFFICE AND ARE APPROVED FOR ON-SITE WASTEWATER DISPOSAL SYSTEMS.  
 SIGNED THIS \_\_\_\_\_ DAY OF \_\_\_\_\_, 20\_\_\_\_.  
 \_\_\_\_\_  
 WEBER-MORGAN HEALTH DEPARTMENT

**Weber County Recorder**  
 Entry No. \_\_\_\_\_ Fee Paid \_\_\_\_\_  
 And Recorded, \_\_\_\_\_ In \_\_\_\_\_ Book \_\_\_\_\_  
 Of The Official Records, Page \_\_\_\_\_  
 Recorded For: \_\_\_\_\_  
 \_\_\_\_\_  
 Weber County Recorder  
 \_\_\_\_\_ Deputy.