

Street Section (60' R.O.W.)
SCALE: NONE

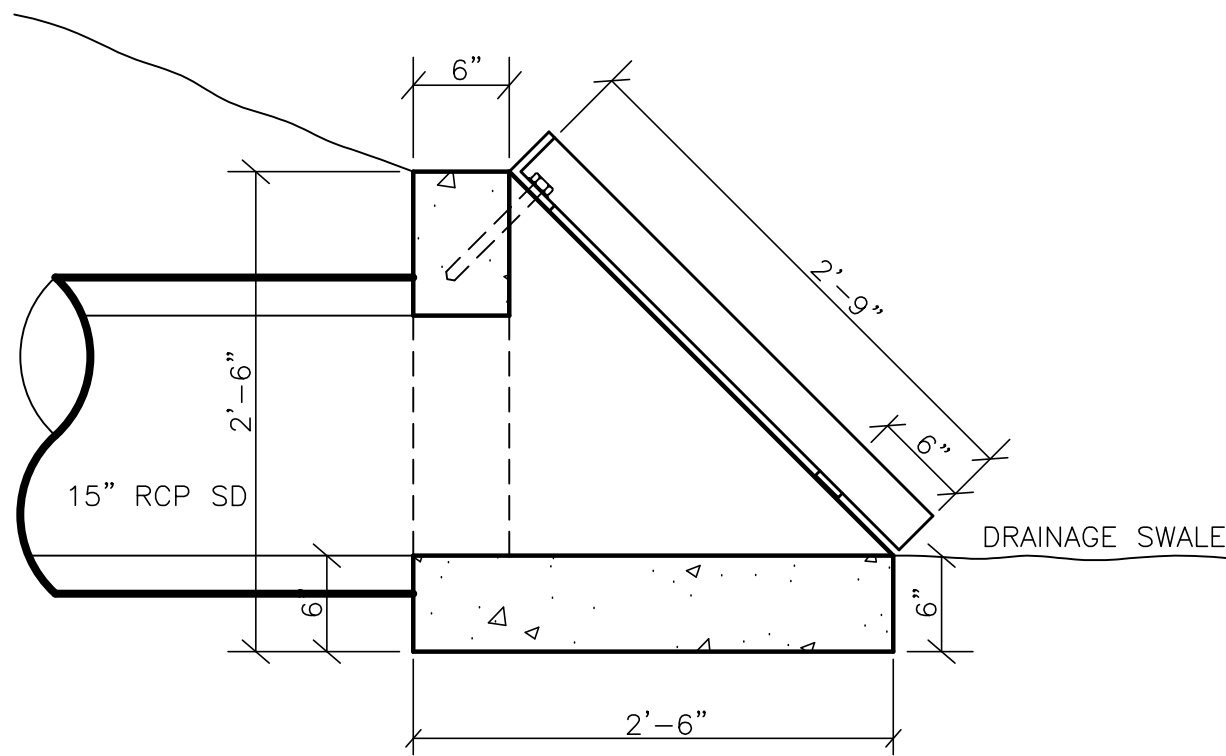
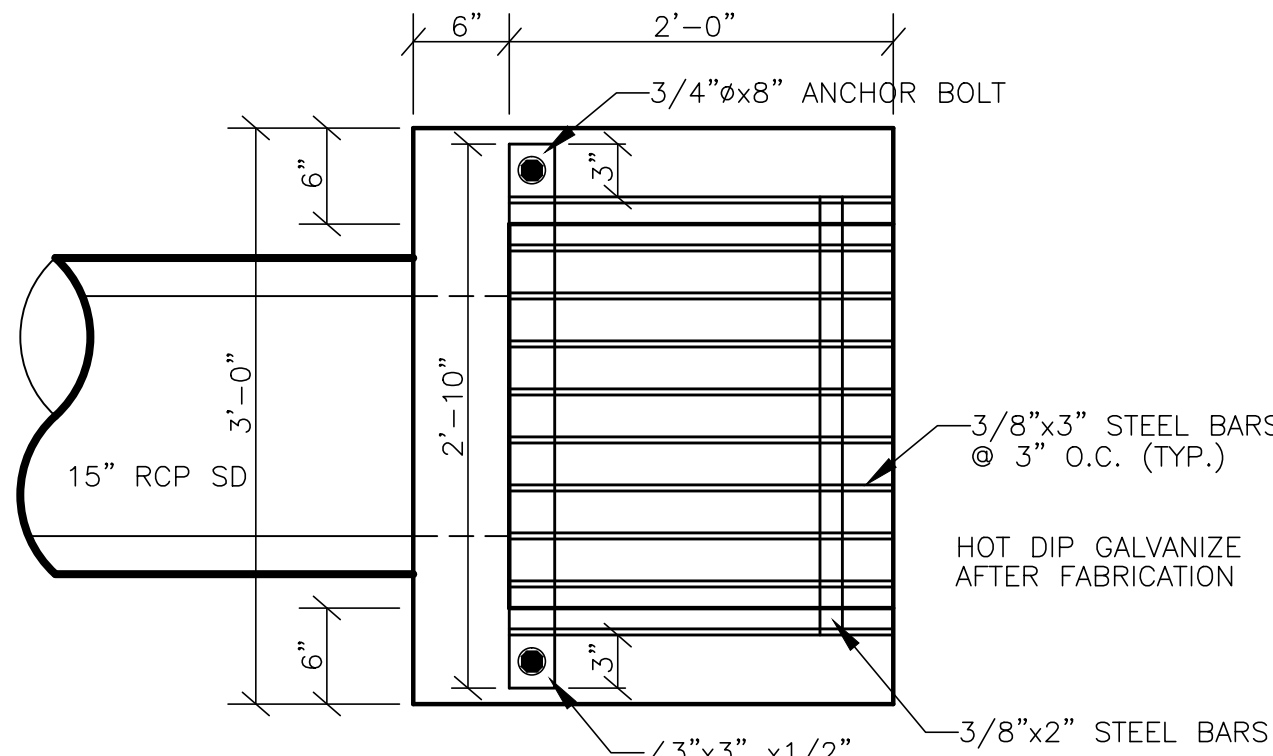
- W— = PROPOSED CULINARY WATER LINE
- EX.W— = EXISTING CULINARY WATER LINE
- SS— = PROPOSED SANITARY SEWER LINE
- EX.SS— = EXISTING SANITARY SEWER LINE
- SD— = PROPOSED STORM DRAIN LINE
- EX.SD— = EXISTING STORM DRAIN LINE
- LD— = PROPOSED LAND DRAIN LINE
- EX.LD— = EXISTING LAND DRAIN LINE
- SW— = PROPOSED SECONDARY WATER LINE
- EX.SW— = EXISTING SECONDARY WATER LINE
- IRR— = PROPOSED IRRIGATION LINE
- EX.IRR— = EXISTING IRRIGATION LINE
- OHP— = EXISTING OVERHEAD POWER LINE
- TEL— = EXISTING TELEPHONE LINE
- GAS— = EXISTING NATURAL GAS LINE
- = EXISTING EDGE OF PAVEMENT
- X—X—X— = FENCE LINE
- — — — = MASONRY BLOCK/RETAINING WALL
- — — — = DITCH/SWALE FLOWLINE
- = PROPOSED FIRE HYDRANT
- = EXISTING FIRE HYDRANT
- = PROPOSED MANHOLE
- = EXISTING MANHOLE
- = PROPOSED SEWER CLEAN-OUT
- ⌵ = PROPOSED GATE VALVE
- ⌵ = EXISTING GATE VALVE
- ⊠ = PROPOSED WATER METER
- ⊠ = EXISTING WATER METER
- = PROPOSED CATCH BASIN

Legend

- = EXISTING CATCH BASIN
- ⊙ = EXISTING SPRINKLER
- ⌵ = PLUG W/ 2" BLOW-OFF
- = AIR-VAC ASSEMBLY
- ▼ = PROPOSED REDUCER
- ⌵ = PLUG & BLOCK
- ⊙ = STREET LIGHT
- ⌵ = SIGN
- BLDG = BUILDING
- BVC = BEGIN VERTICAL CURVE
- C&G = CURB & GUTTER
- CB = CATCH BASIN
- C.F. = CUBIC FEET
- C.F.S. = CUBIC FEET PER SECOND
- CL = CENTERLINE
- DI = DUCTILE IRON
- EP = EDGE OF PAVEMENT
- EVC = END VERTICAL CURVE
- FC = FENCE CORNER
- FF = FINISH FLOOR
- FFE = FINISH FLOOR ELEVATION
- FG = FINISHED GRADE
- FH = FIRE HYDRANT
- FL = FLOW LINE
- GB = GRADE BREAK
- HDPE = HIGH DENSITY POLYETHYLENE PIPE
- INV = INVERT
- IRR = IRRIGATION
- LD = LAND DRAIN
- L.F. = LINEAR FEET
- NG = NATURAL GRADE
- O.C. = ON CENTER
- PC = POINT OF CURVE
- PRC = POINT OF REVERSE CURVE
- PRVC = POINT OF REVERSE VERTICAL CURVE
- PT = POINT OF TANGENT
- PP = POWER/UTILITY POLE
- P.U.E. = PUBLIC UTILITY EASEMENT
- R/C = REBAR & CAP
- RCB = REINFORCED CONCRETE BOX
- RCP = REINFORCED CONCRETE PIPE
- RIM = RIM OF MANHOLE
- R.O.W. = RIGHT-OF-WAY
- SD = STORM DRAIN
- SS = SANITARY SEWER
- SW = SECONDARY WATER
- TBC = TOP BACK OF CURB
- TOE = TOE OF SLOPE
- TOP = TOP OF SLOPE
- TOW = TOP OF WALL
- TSW = TOP OF SIDEWALK
- VPI = VERTICAL POINT OF INTERSECT.
- W = CULINARY WATER
- WM = WATER METER
- = NEW PAVEMENT
- = NEW CONCRETE

General Notes

- ALL CONSTRUCTION ON THIS PROJECT SHALL CONFORM TO THE DEVELOPMENT STANDARDS OF WEBER COUNTY AND THE STANDARD DRAWINGS CONTAINED THEREIN. WEBER COUNTY PUBLIC WORKS REQUIREMENTS SHALL BE MET.
- THE LOCATION OF EXISTING UTILITIES SHOWN ARE APPROXIMATE ONLY AND THE CONTRACTOR SHALL VERIFY THE LOCATION AND ELEVATION OF ALL UTILITIES SHOWN OR NOT SHOWN ON THESE PLANS.
- THE STREET STRUCTURAL CROSS SECTION IS PER WEBER COUNTY DETAILS CONTAINED WITHIN THESE PLANS.
- WATER LINE PIPE SHALL BE PVC C-900 CLASS 200. WASHOUT ASSEMBLIES SHALL CONSIST OF A KUPFERLE FOUNDRY CO. 2" BLOW-OFF HYDRANT (OR COUNTY-APPROVED EQUIV.).
- SECONDARY WATER LINE SHALL BE PVC C-900 CLASS 200. ALL SECONDARY WATER VALVE LIDS SHALL BE STAMPED "IRRIGATION".



15" Inlet w/Grate
SCALE: 1"=1'



REVISIONS	DATE	DESCRIPTION
4-14-11	RH	County Comments
6-15-11	RH	County Comments
9-29-11	RH	County Comments
6-29-12	RH	County Comments

Lisa Estates Subdivision Phase 1 & 2

WARREN, WEBER COUNTY, UTAH

Street Cross-Sections/ Master Legend/Notes



Project Info.

Engineer:
J. NATE REEVE, P.E.
Drafter:
R. HANSEN
Begin Date:
MARCH 18, 2011
Name:
LISA ESTATES
SUBDIVISION
PHASE 1 & 2
Number: 1714-27

Sheet	6
2	Sheets