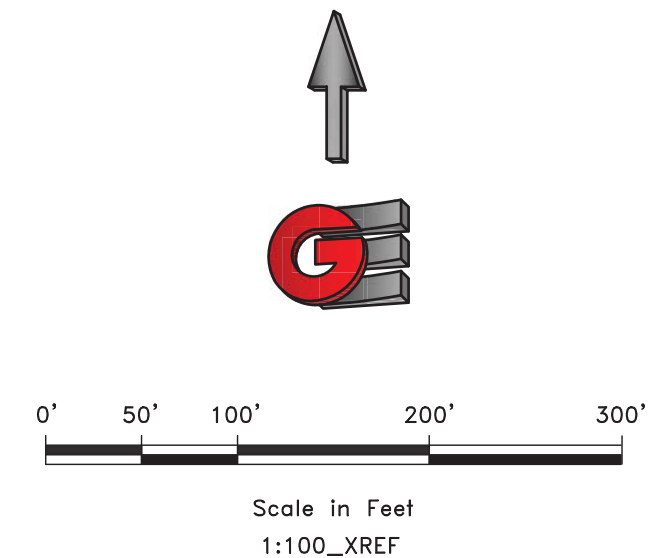


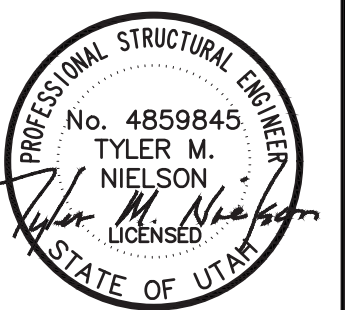


NOTE:
 THE LOCATION OF EXISTING UTILITIES AND OTHER IMPROVEMENTS SHOWN ARE APPROXIMATE. THE CONTRACTOR SHALL FIELD VERIFY THE LOCATION AND ELEVATION OF ALL THE IMPROVEMENTS SHOWN OR NOT SHOWN ON THE PLANS.



SCALE: 1/8"=1'-0"
 DATE: 2-6-2017
 DESIGN: TJN
 DRAWN: BSD
 CHECKED: TJN

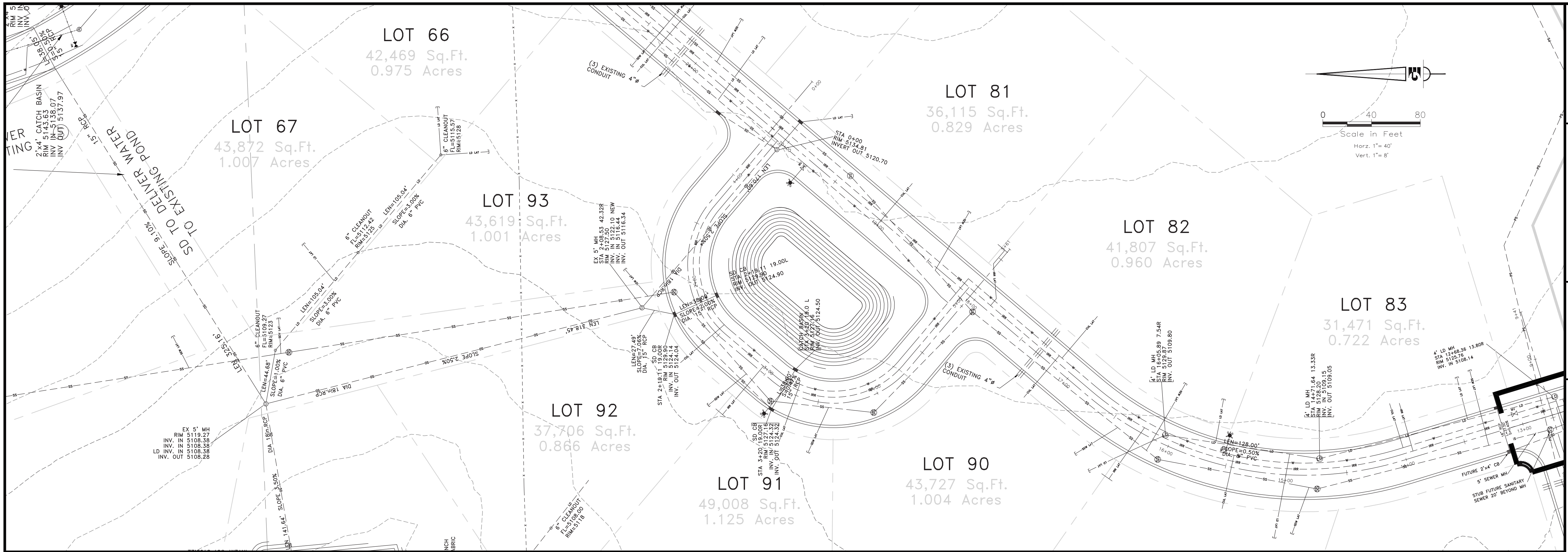
REVISIONS	DESCRIPTION
DATE	



EXISTING IMPROVEMENTS - OVERALL MAP
 EAGLE RIDGE CLUSTER SUBDIVISION - AS-BUILT
 OPHEIKENS AND COMPANY
 EDEN, WEBER COUNTY, UTAH

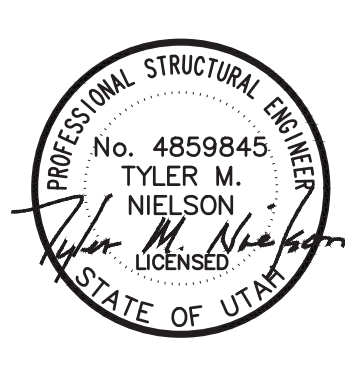
GARDNER ENGINEERING
 CIVIL • LAND PLANNING
 MUNICIPAL • LAND SURVEYING
 5150 SOUTH 375 EAST OGDEN, UT
 OFFICE: 801.476.0202 FAX: 801.476.0066

01
 12



SCALE	1/40 REF
DATE	2-6-2017
DESIGN	TUN
DRAWN	BSD
CHECKED	TUN

REVISIONS	DESCRIPTION
DATE	

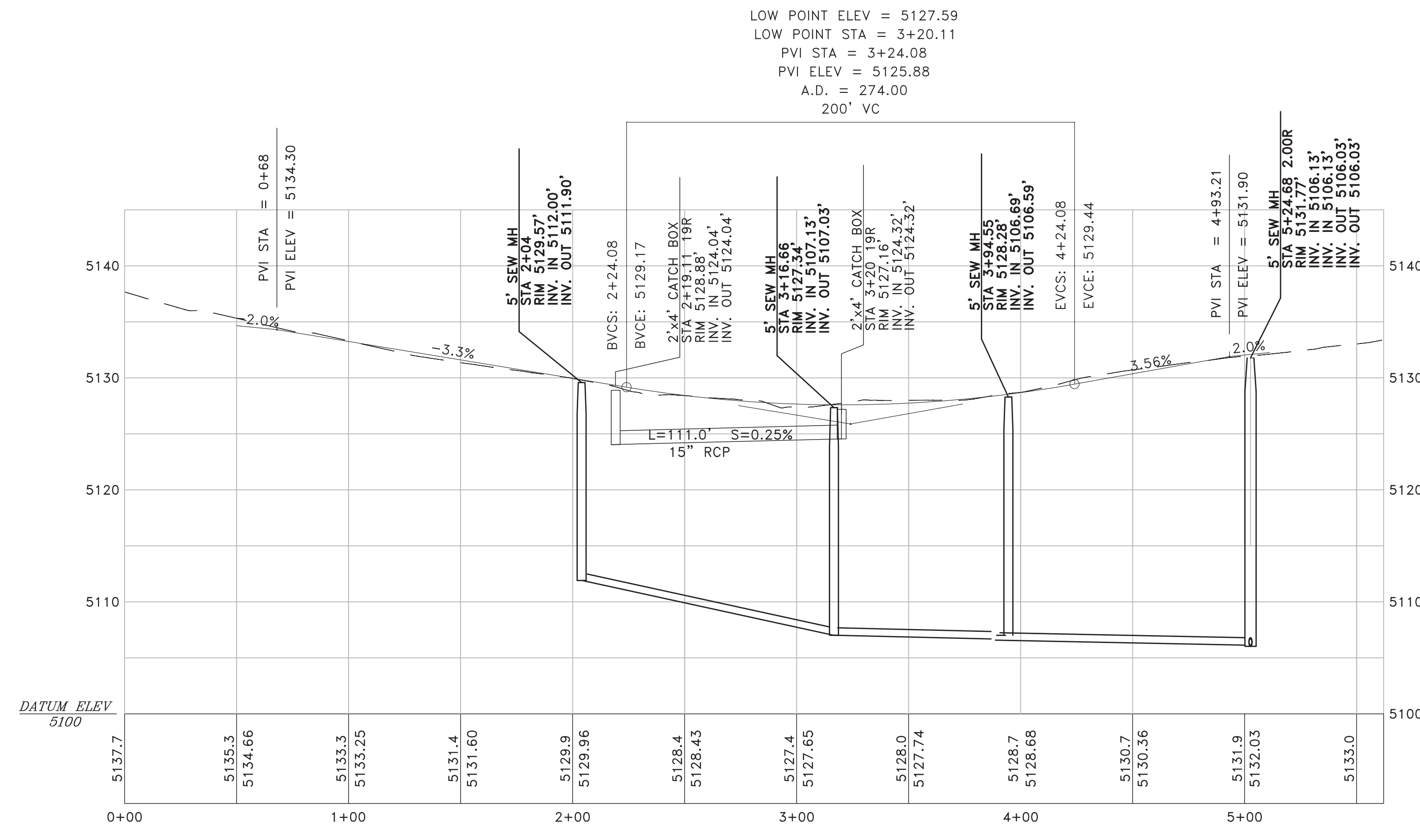


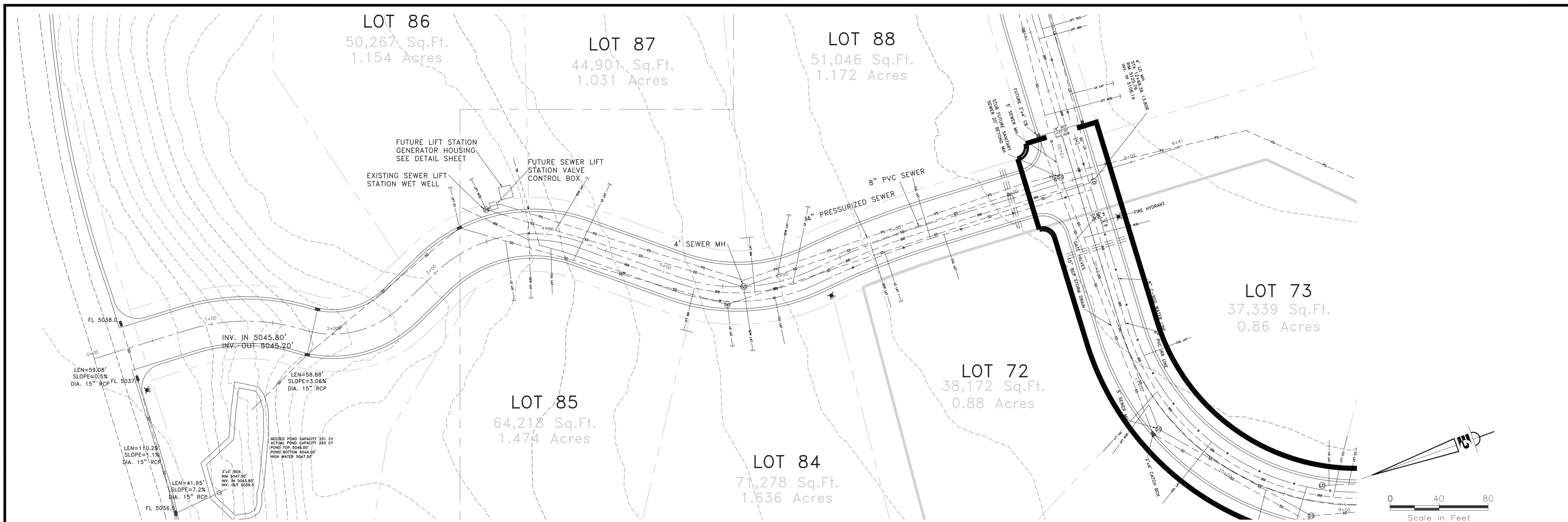
OPHEIKENS AND COMPANY
EAGLE RIDGE CLUSTER SUBDIVISION - AS-BUILT
LOOP DRIVE - PLAN AND PROFILE
EDEN, WEBER COUNTY, UTAH

GARDNER ENGINEERING
CIVIL • LAND PLANNING
MUNICIPAL • LAND SURVEYING

5150 SOUTH 375 EAST OGDEN, UT
OFFICE: 801.476.0202 FAX: 801.476.0066

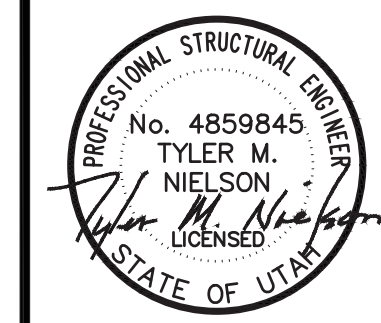
05
12





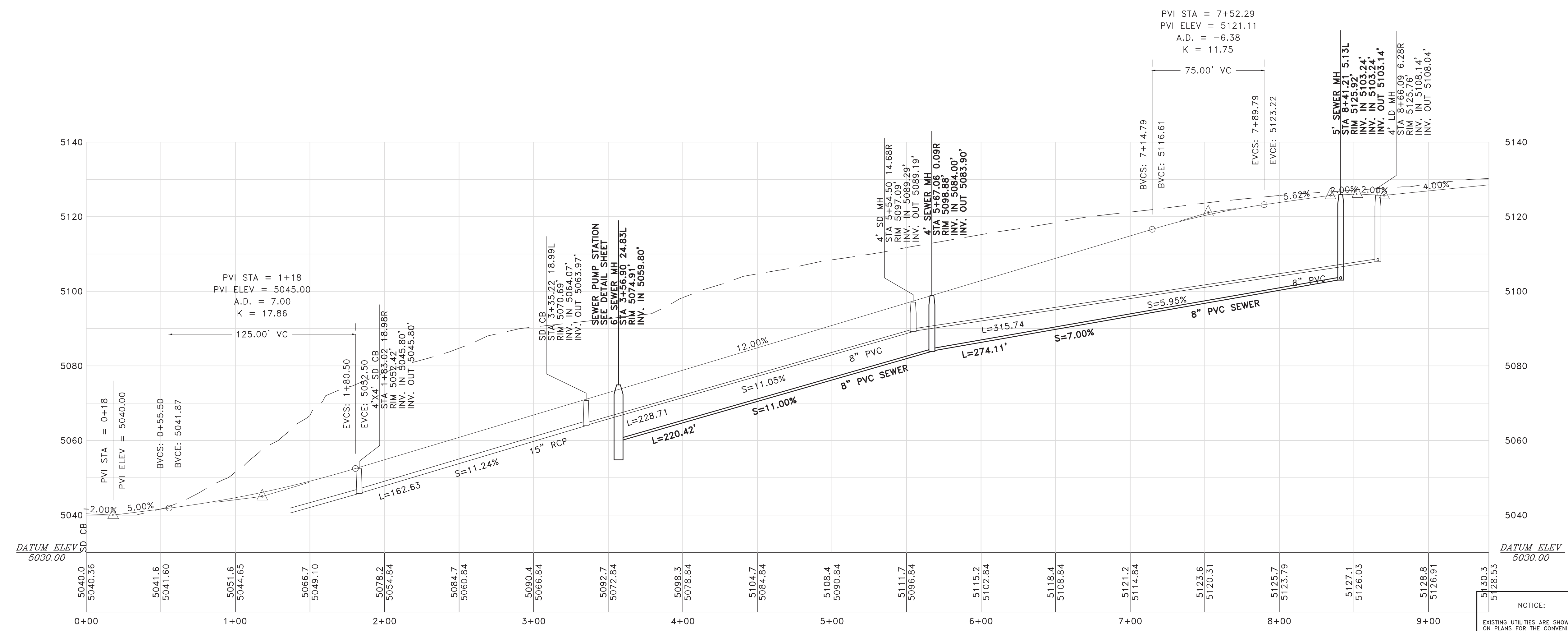
SCALE: 1/40" REF
DATE: 2-6-2017
DESIGN: TUN
DRAWN: BSD
CHECKED: TUN

REVISIONS	DESCRIPTION
DATE	



OPHEIKENS AND COMPANY
EAGLE RIDGE CLUSTER SUBDIVISION - AS-BUILT
EAGLE RIDGE DRIVE - PLAN AND PROFILE
EDEN, WEBER COUNTY, UTAH

GARDNER ENGINEERING
CIVIL • LAND PLANNING
MUNICIPAL • LAND SURVEYING
5150 SOUTH 375 EAST OGDEN, UT
OFFICE: 801.476.0202 FAX: 801.476.0066

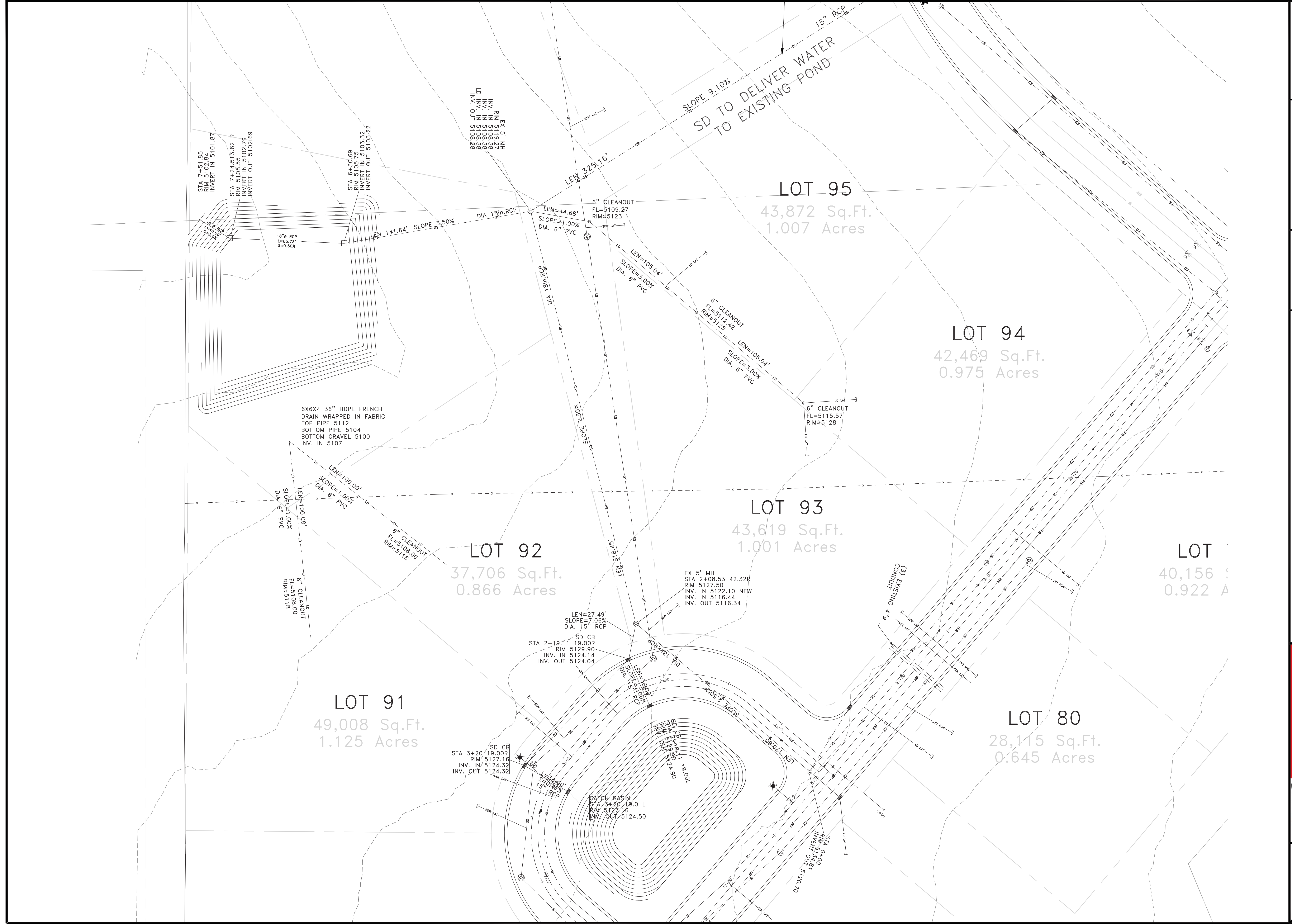


NOTICE:
EXISTING UTILITIES ARE SHOWN ON PLANS FOR THE CONVENIENCE OF THE CONTRACTOR ONLY. THE CONTRACTOR IS RESPONSIBLE FOR THE PROTECTION OF ALL UTILITIES. THE ENGINEER BEARS NO RESPONSIBILITY FOR THE UTILITIES NOT SHOWN OR SHOWN INCORRECTLY.

Call BLUE STAKES BEFORE YOU Dig
1-800-662-4111
UNDERGROUND SERVICE UNIT

DEVELOPER
CONTACT: CHAD MARTIN
(801) 430-4750
OPHEIKENS AND COMPANY
933 WALL AVENUE
OGDEN, UTAH. 84404

06
12



SCALE: 1/8" = 1' REF

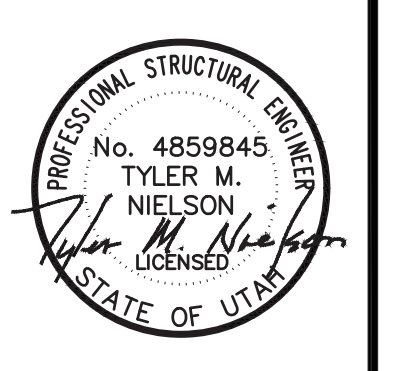
DATE: 2-6-2017

DESIGN: TJN

DRAWN: BSD

CHECKED: TJN

REVISIONS	DESCRIPTION
DATE	



EAGLE RIDGE DRIVE - PLAN AND PROFILE

EAGLE RIDGE CLUSTER SUBDIVISION - AS-BUILT

OPHEIKENS AND COMPANY

EDEN, WEBER COUNTY, UTAH

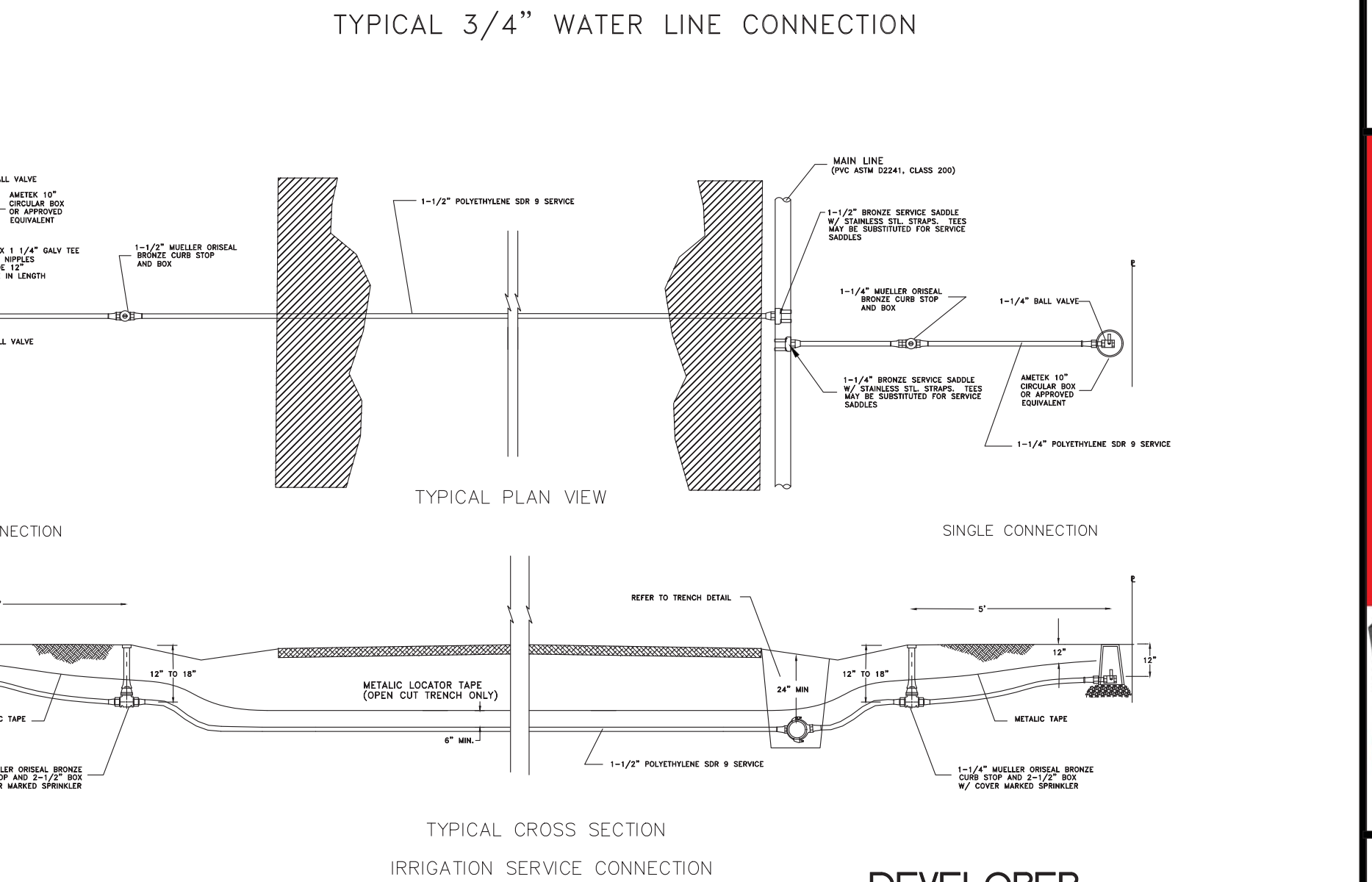
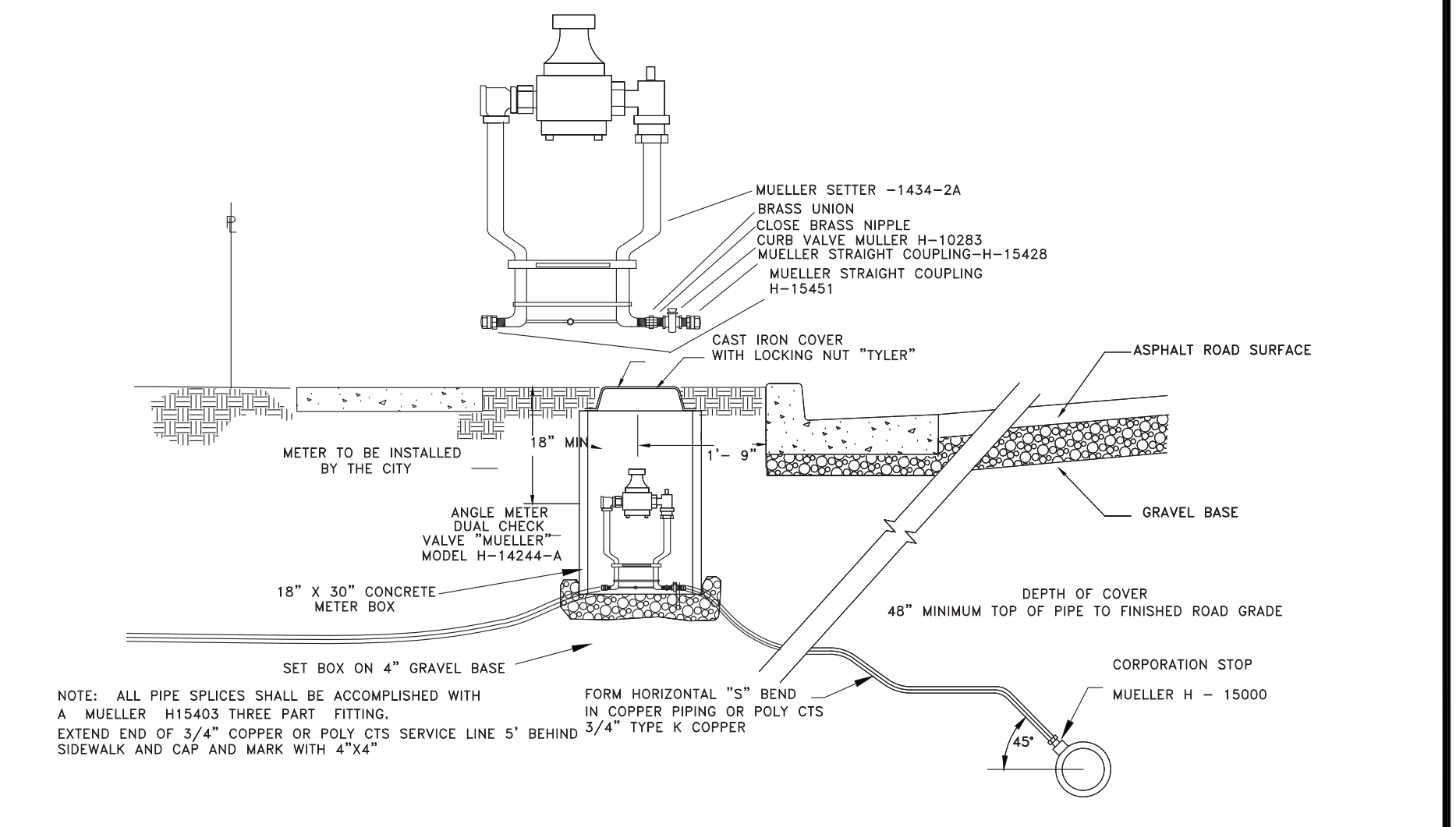
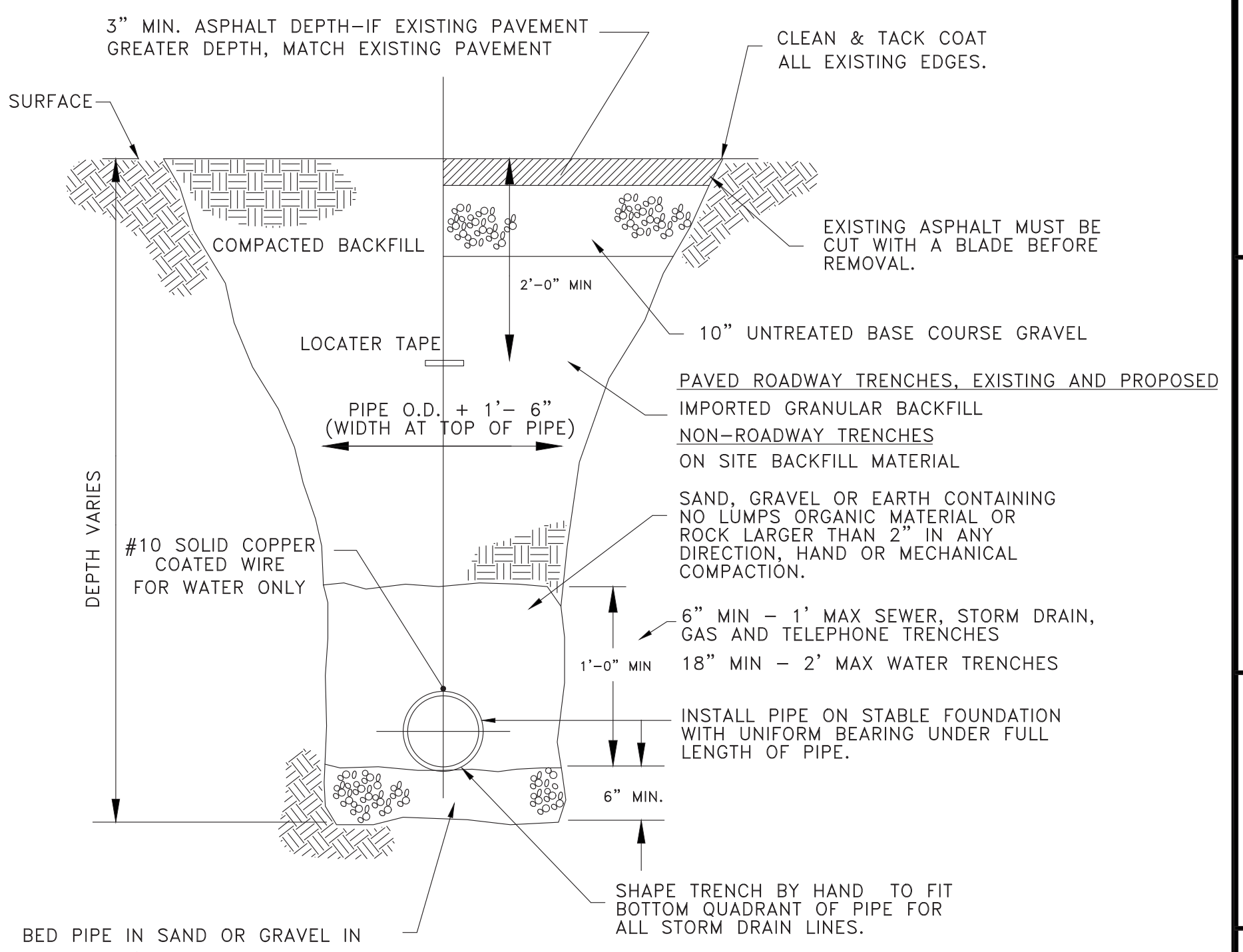
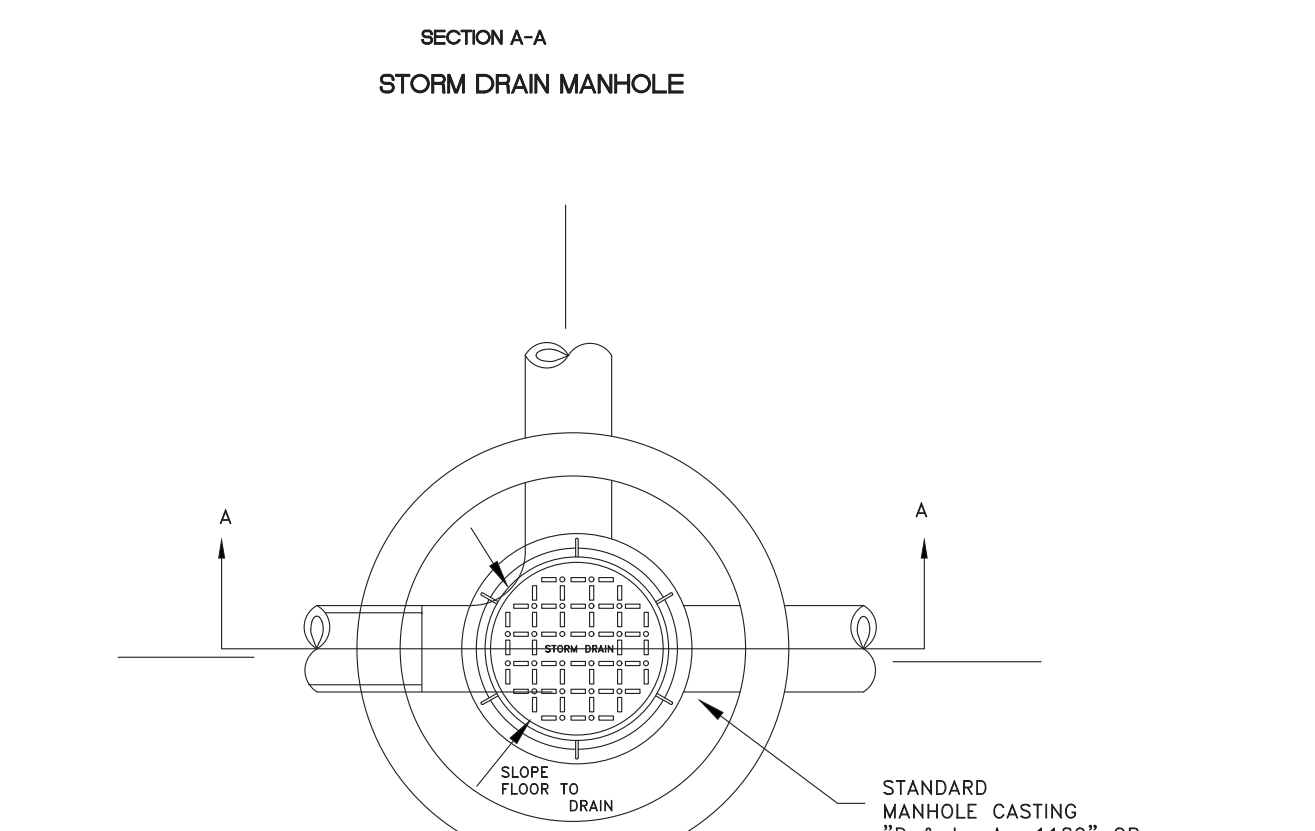
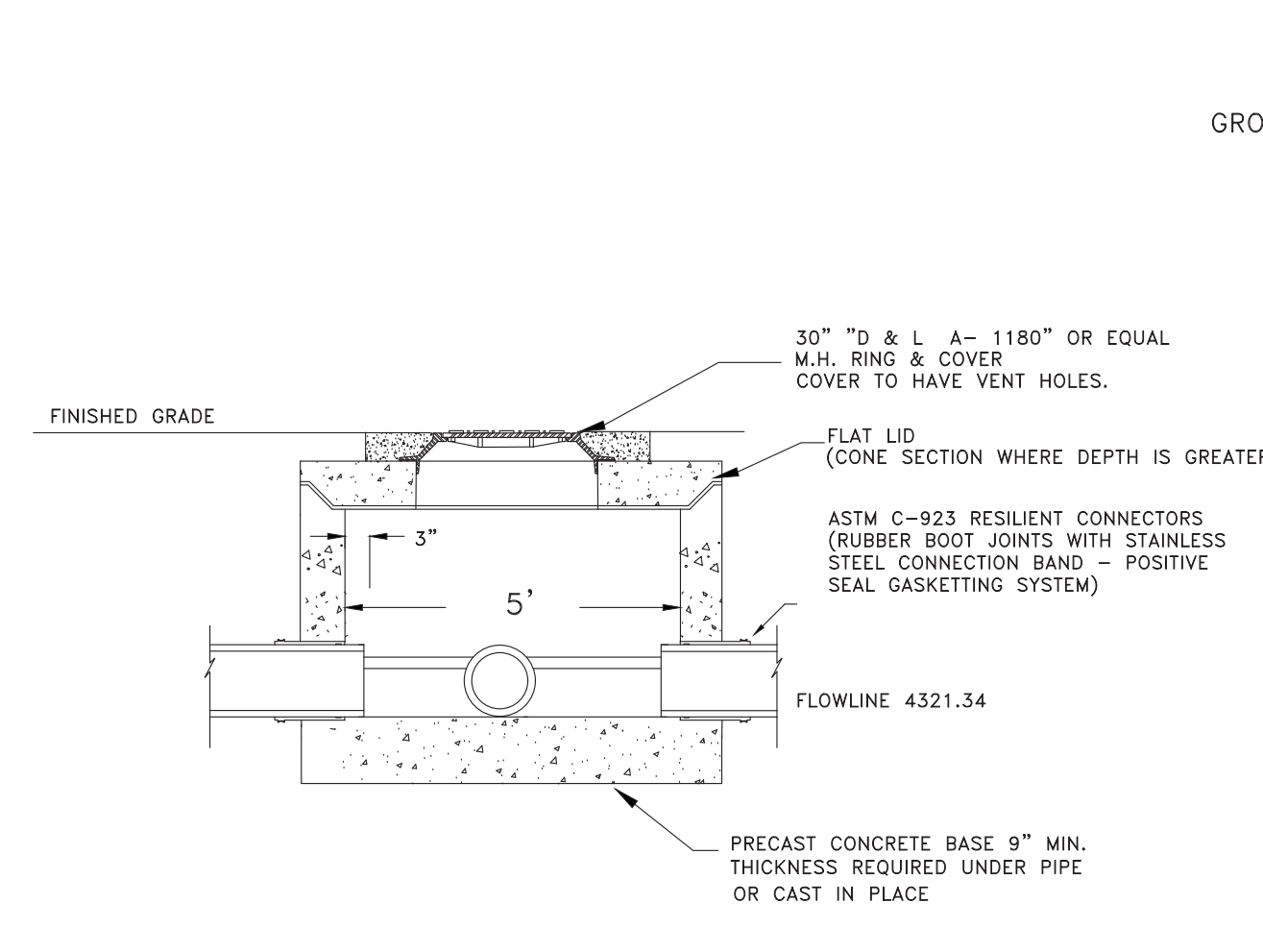
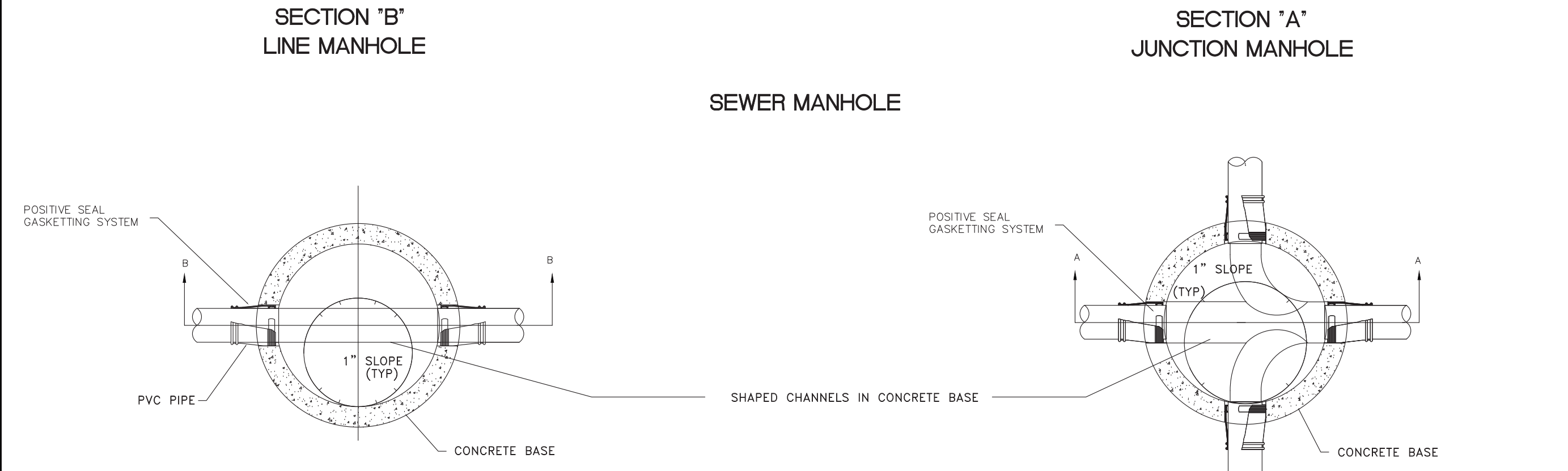
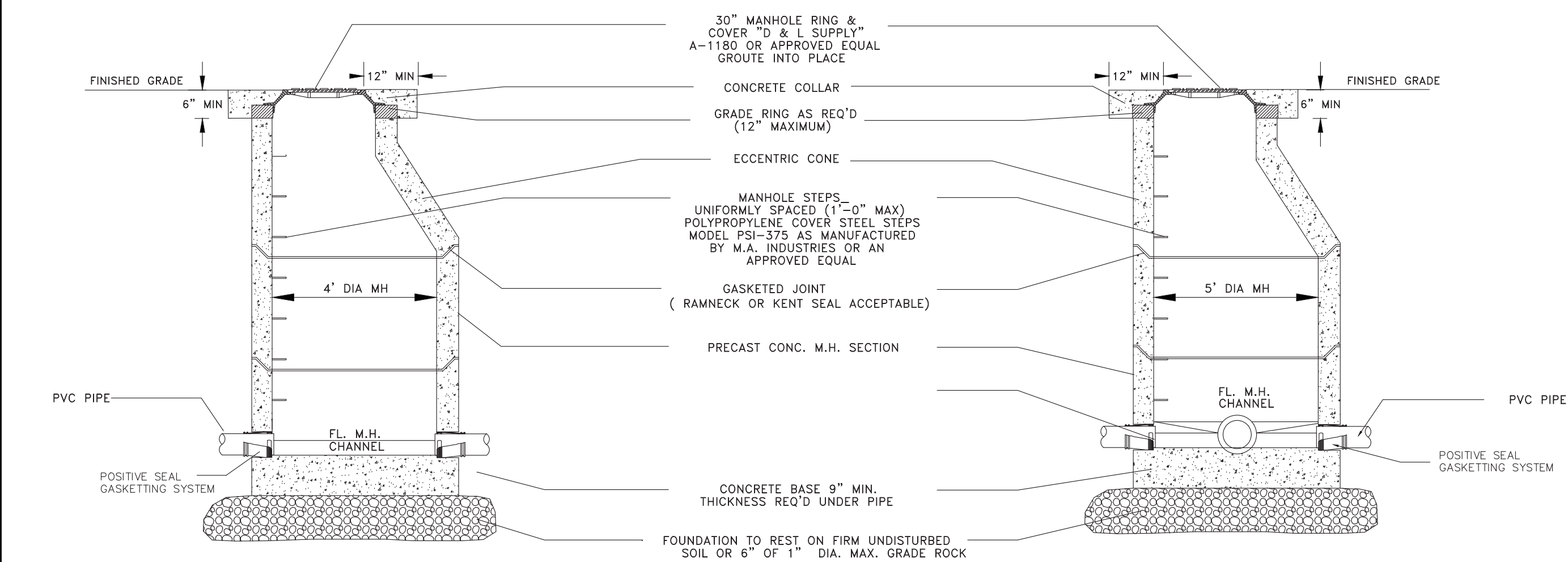
GARDNER ENGINEERING

CIVIL • LAND PLANNING

MUNICIPAL • LAND SURVEYING

5150 SOUTH 375 EAST OGDEN, UT

OFFICE: 801.476.0202 FAX: 801.476.0066



NOTE: PRECAST REINFORCED MANHOLE SHOWN CAST IN PLACE MANHOLE ACCEPTABLE

NOTE: PRECAST REINFORCED MANHOLE SHOWN CAST IN PLACE MANHOLE ACCEPTABLE

NOTE: ALL PIPE SPICES SHALL BE ACCOMPLISHED WITH A MUELLER H15403 THREE PART FITTING. EXTEND END OF 3/4\"/>

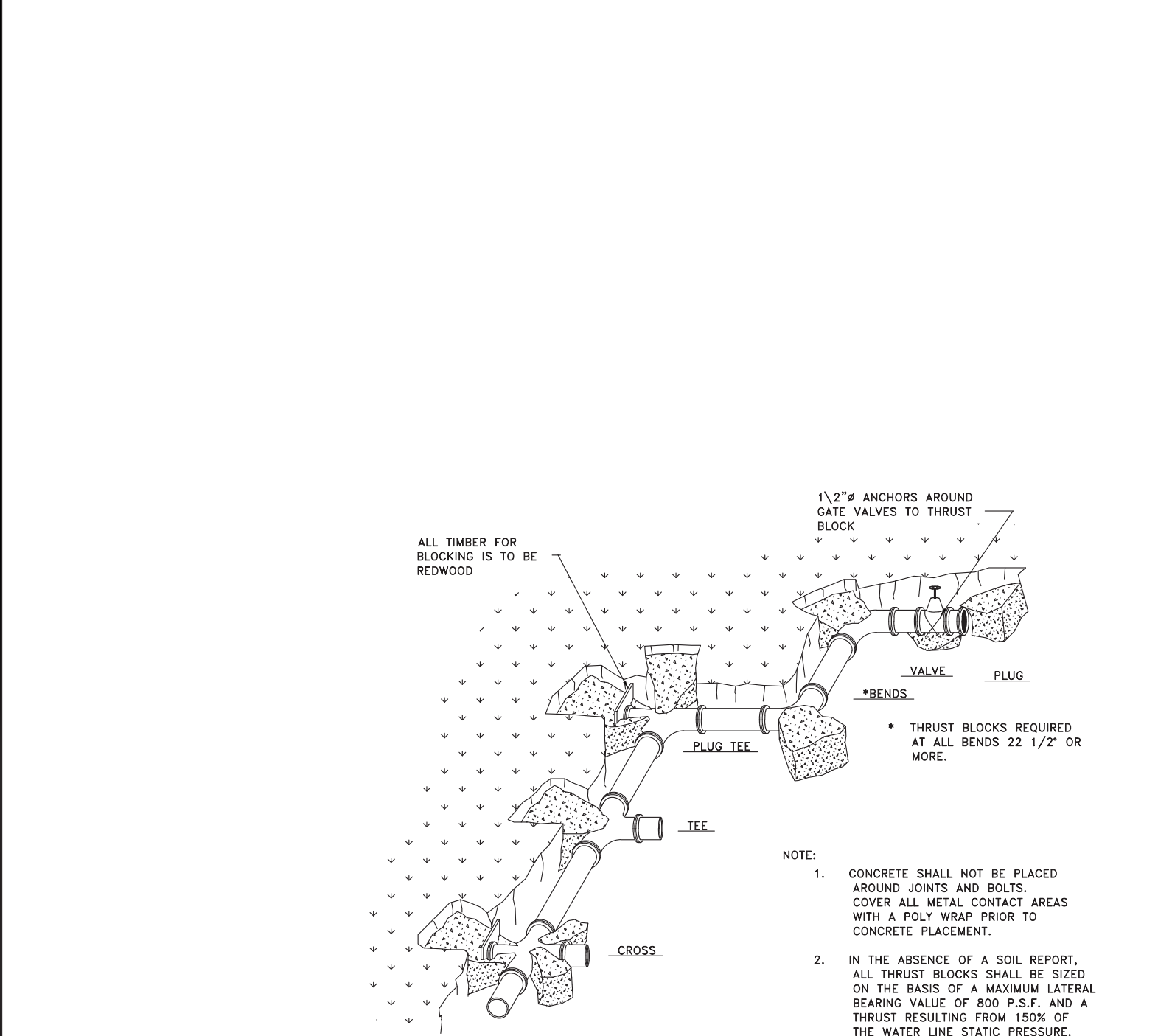


TABLE OF BEARING AREAS IN SQ. FT FOR CONCRETE THRUST BLOCKING FOR 100 P.S.I. INTERNAL STATIC PRESSURE AND 1000 LBS. PER SQ. FT. SOIL BEARING CAPACITY.

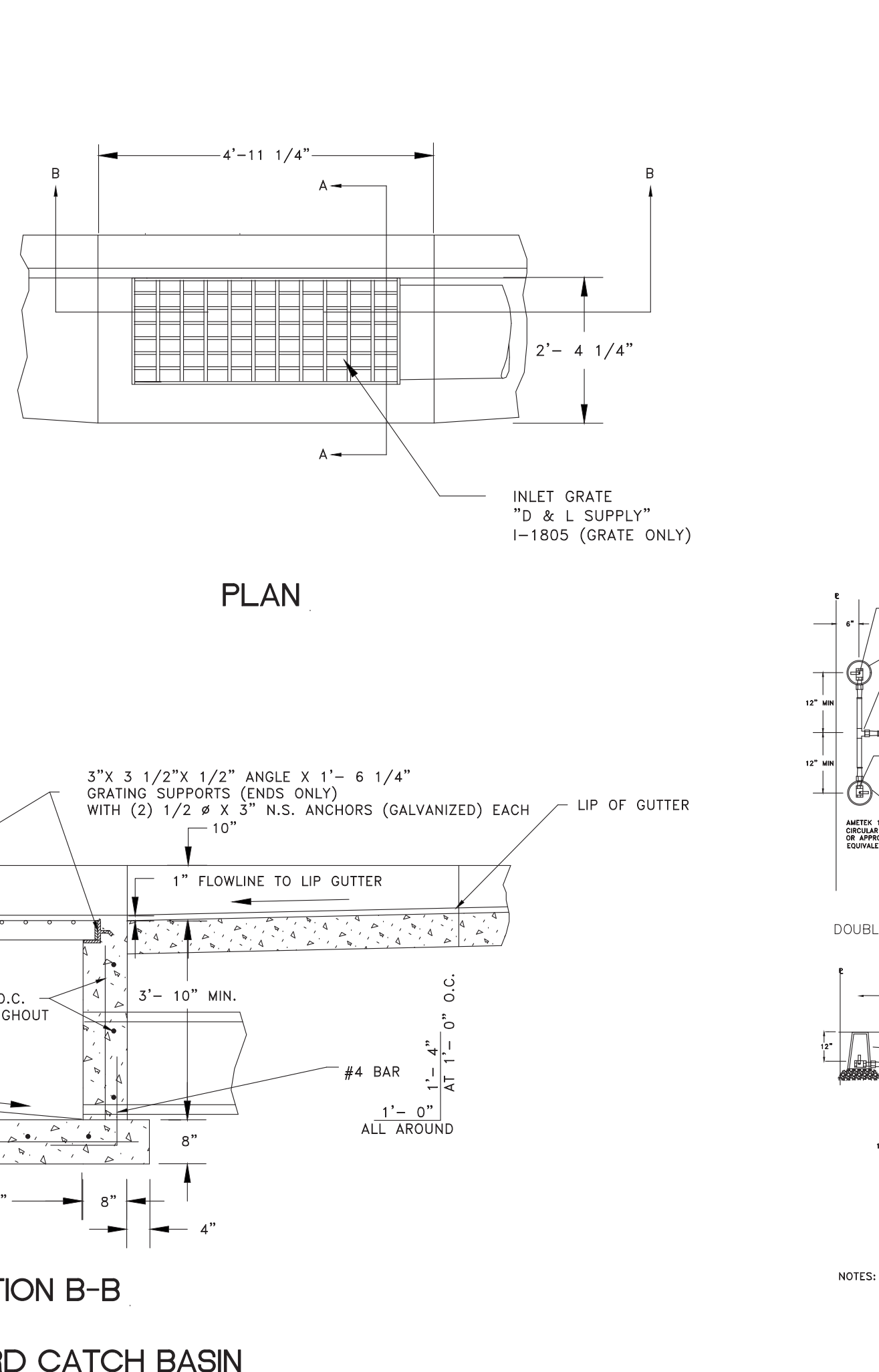
SIZE	BENDS		TEES		GATE VALVES		DEAD ENDS		CROSSOVERS		CROSSOVERS	
	90°	45°	22 1/2°	11 1/4°	11 1/4°	11 1/4°	11 1/4°	11 1/4°	11 1/4°	11 1/4°	11 1/4°	11 1/4°
3	1.0	0.0	0.3	0	0.7	0.3	0.7	0.7	0.7	0.7	0.7	0.7
4	1.8	1.0	0.5	0	1.3	0.5	1.3	1.3	1.3	1.3	1.3	1.3
6	4.0	2.2	1.1	0	2.8	0.7	2.8	2.8	2.8	2.8	2.8	2.8
8	7.1	3.8	2.0	1.0	5.0	2.4	5.0	5.0	5.0	5.0	5.0	5.0
10	11.1	6.0	3.0	1.5	7.8	4.5	7.8	7.8	7.8	7.8	7.8	7.8
12	16.0	8.6	4.4	2.2	11.3	7.3	11.3	11.3	11.3	11.3	11.3	11.3
14	21.7	11.8	6.0	3.0	15.4	11.0	15.4	15.4	15.4	15.4	15.4	15.4
15	25.0	13.5	7.0	3.5	17.6	12.6	17.6	17.6	17.6	17.6	17.6	17.6
16	28.4	15.3	8.0	4.0	20.0	14.0	20.0	20.0	20.0	20.0	20.0	20.0
18	35.0	19.4	10.0	5.0	25.4	18.4	25.4	25.4	25.4	25.4	25.4	25.4
20	44.2	24.0	12.2	6.1	31.4	23.4	31.4	31.4	31.4	31.4	31.4	31.4
21	49.0	26.5	13.5	6.8	34.6	25.6	34.6	34.6	34.6	34.6	34.6	34.6
22	54.0	29.0	14.8	7.4	38.0	28.0	38.0	38.0	38.0	38.0	38.0	38.0
24	64.0	34.5	17.7	8.8	45.0	33.0	45.0	45.0	45.0	45.0	45.0	45.0
30	100.0	54.0	27.6	13.8	71.0	51.0	71.0	71.0	71.0	71.0	71.0	71.0
36	144.0	78.0	40.0	20.0	102.0	72.0	102.0	102.0	102.0	102.0	102.0	102.0

*SIZE IS BRANCH SIZE.

AREAS GIVEN IN TABLE ARE BASED UPON AN INTERNAL STATIC PRESSURE OF 100 P.S.I. AND A SOIL BEARING CAPACITY OF 1000 LBS PER SQ. FT. BEARING AREAS FOR ANY PRESSURE AND SOIL BEARING CAPACITY MAY BE OBTAINED BY MULTIPLYING THE TABULATED VALUES BY A CORRECTION FACTOR "F".

F = ACTUAL SPECIFIED TEST PRESSURE IN HUNDREDS OF LBS/SQ. IN. / ACTUAL SOIL BEARING CAPACITY IN THOUSANDS OF LBS.

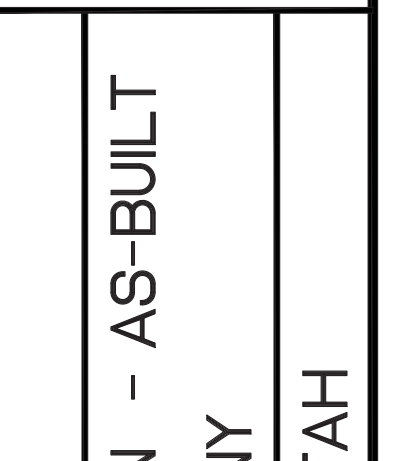
EXAMPLE: TO FIND BEARING AREA FOR 8"-90° BEND WITH A STATIC INTERNAL PRESSURE OF 150 P.S.I. AND WITH A SOIL BEARING CAPACITY OF 3000 LBS. PER SQ. FT. F = 1.5 / 3 = 0.5. TABULATED VALUE = 7.1 SQ. FT. 0.5 X 7.1 = 3.56 SAU 4 SQ. FT. OR 2FT. LONG BY 2FT. HIGH.



SCALE: (AS NOTED) DATE: 2-6-2017

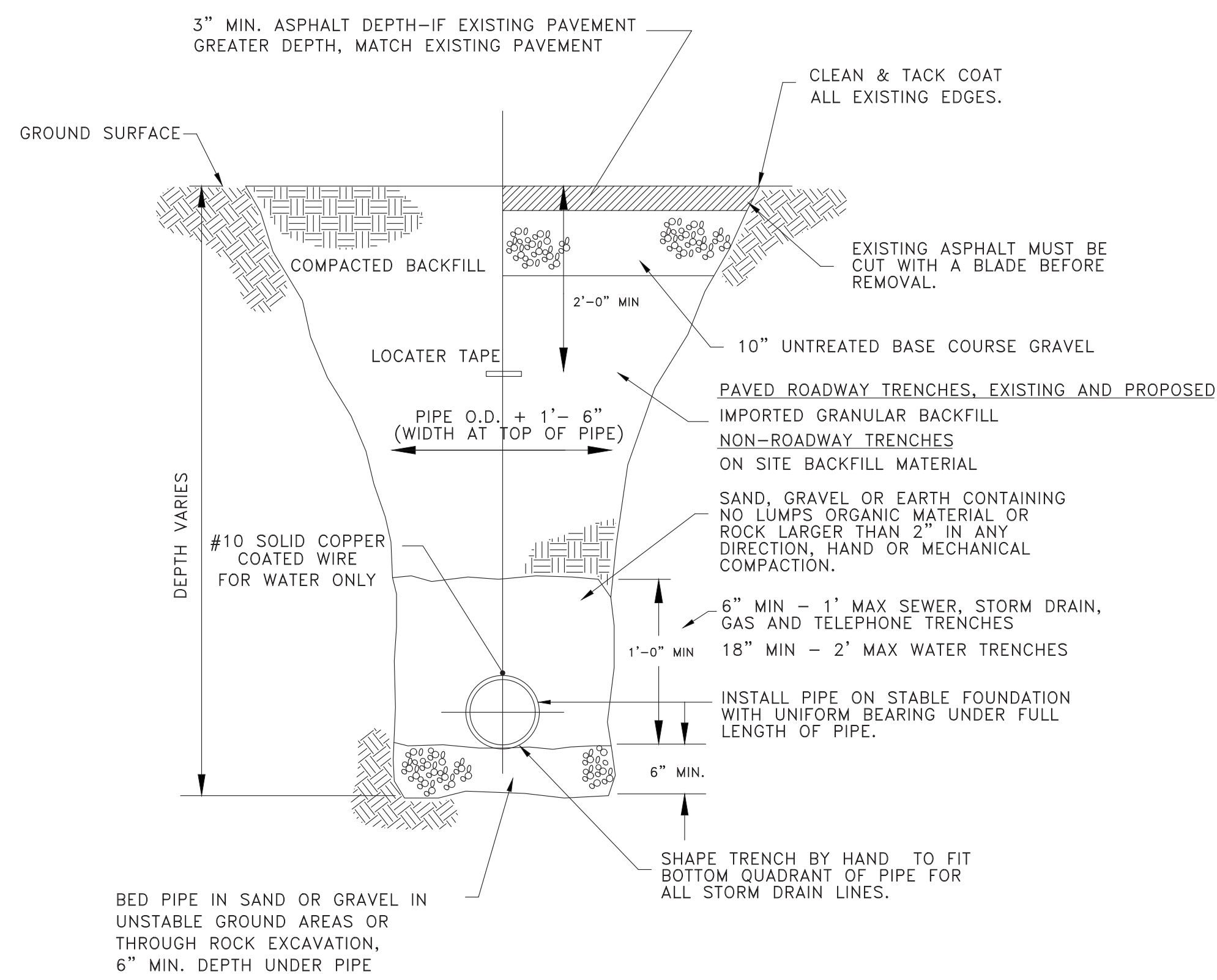
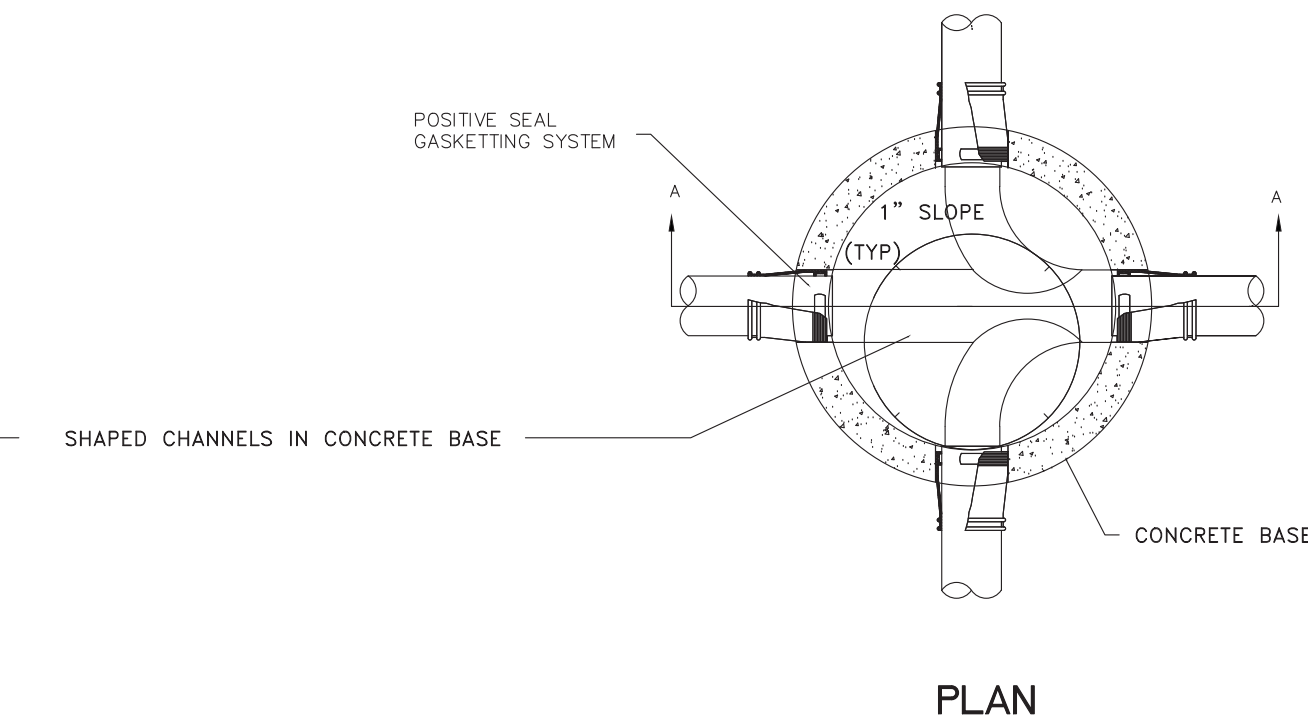
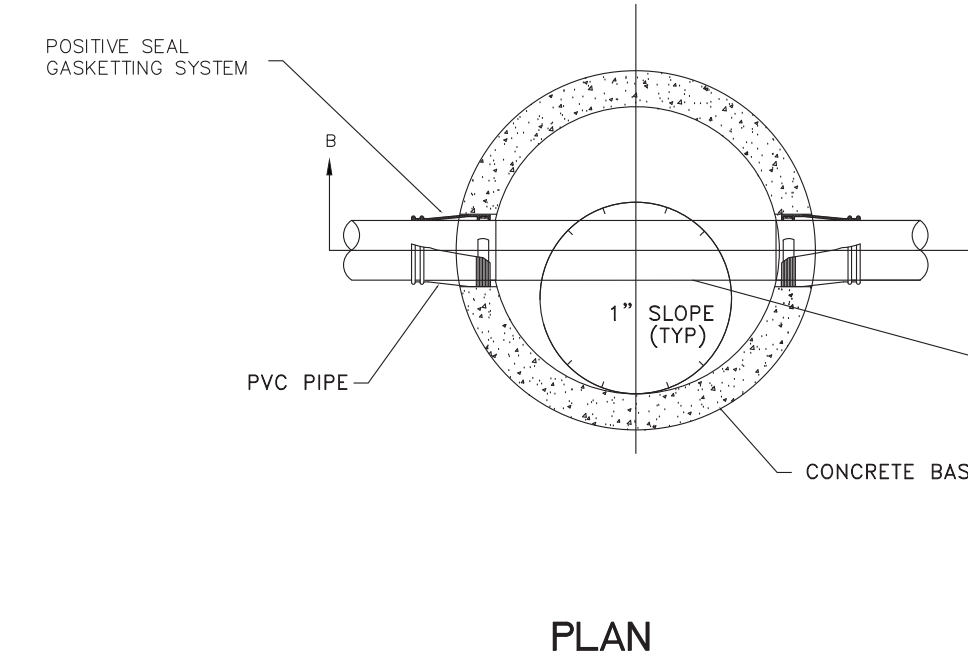
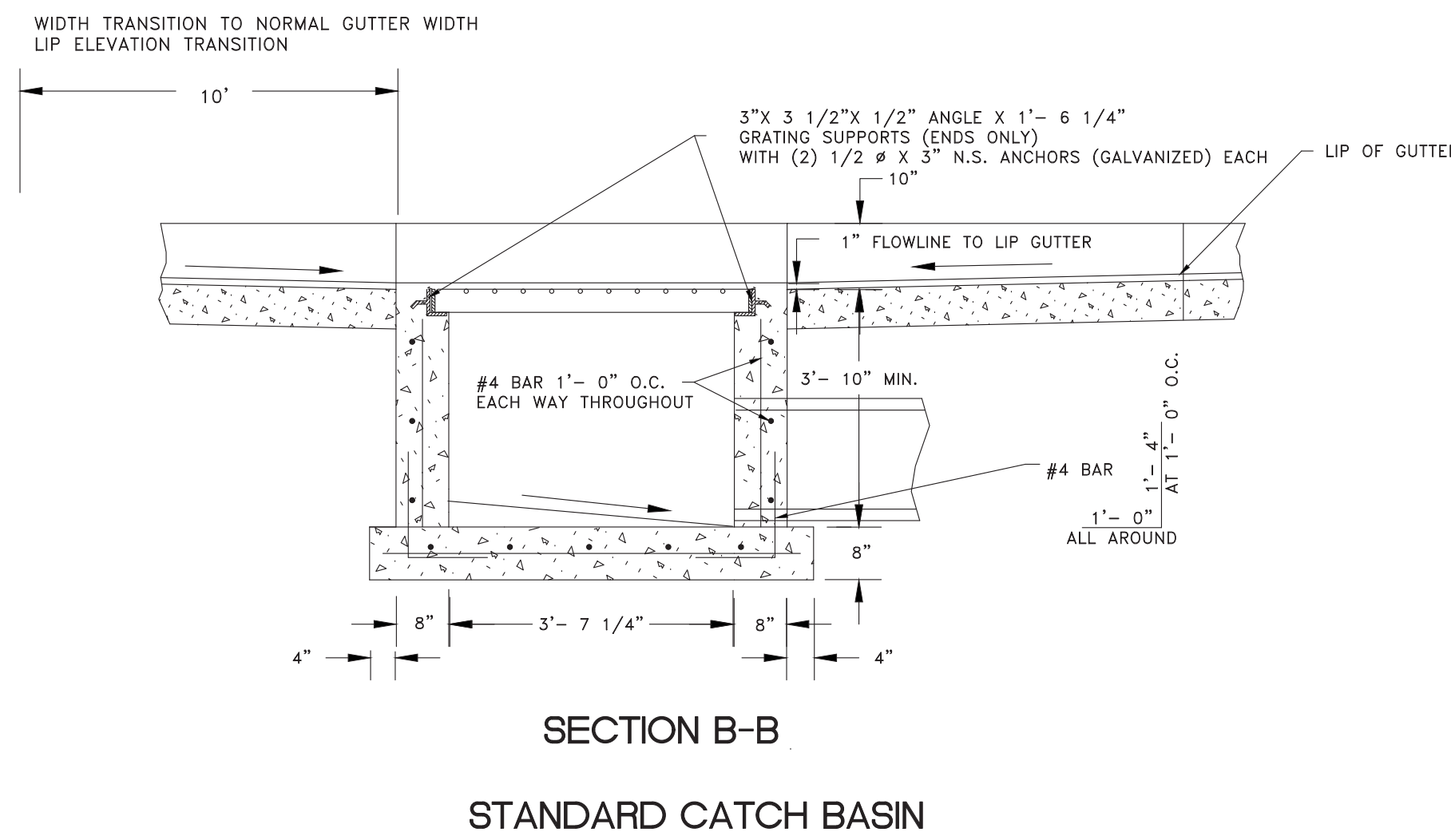
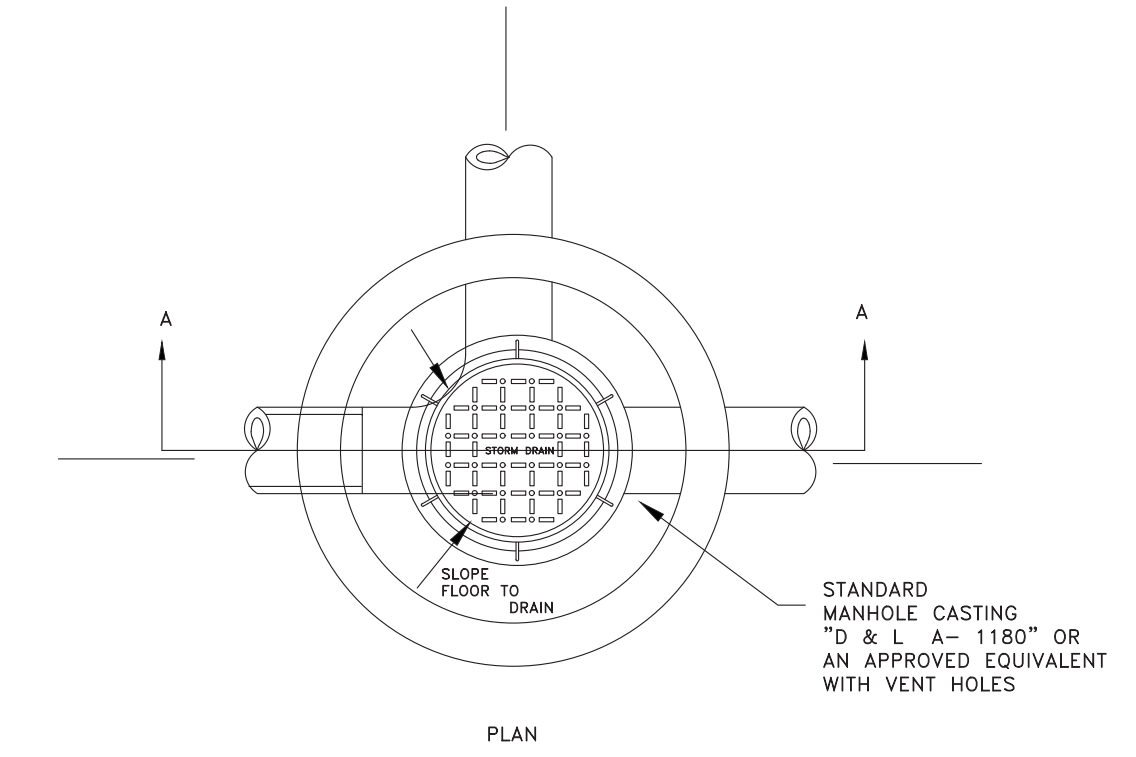
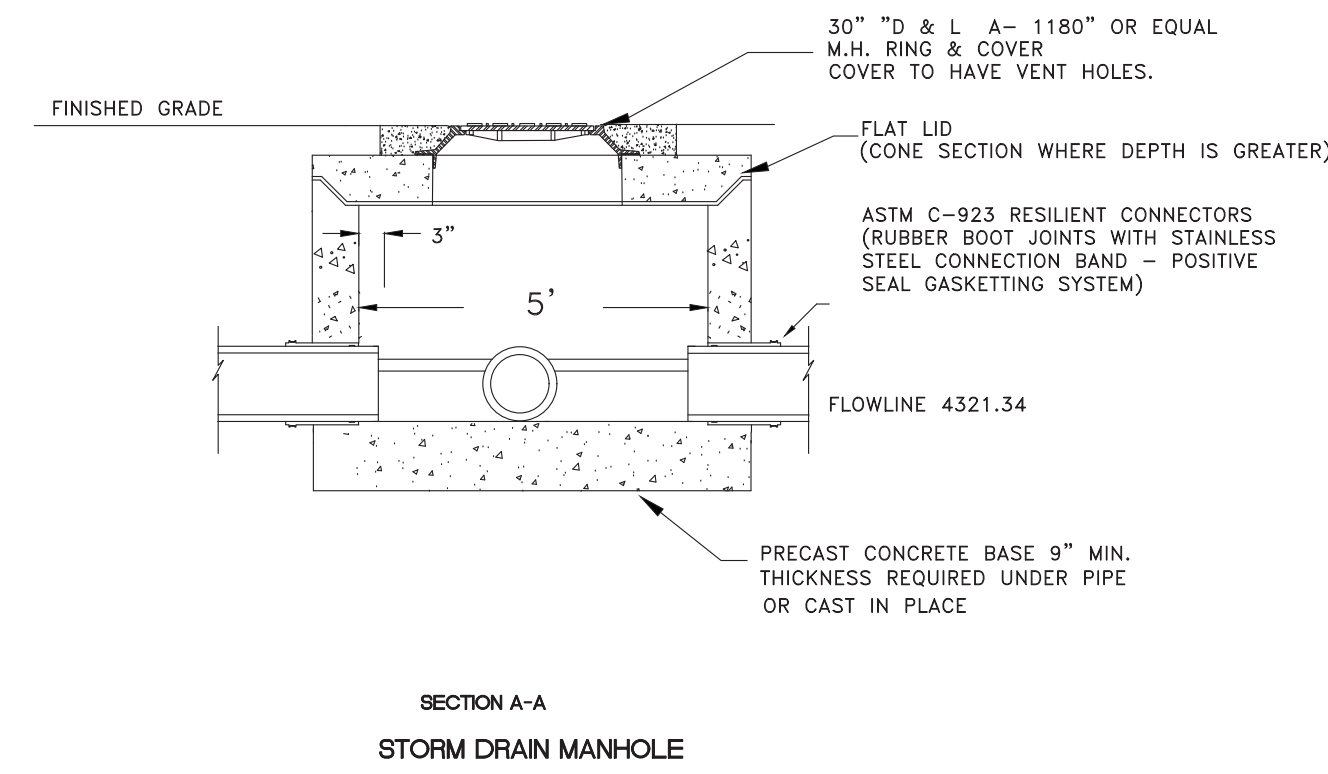
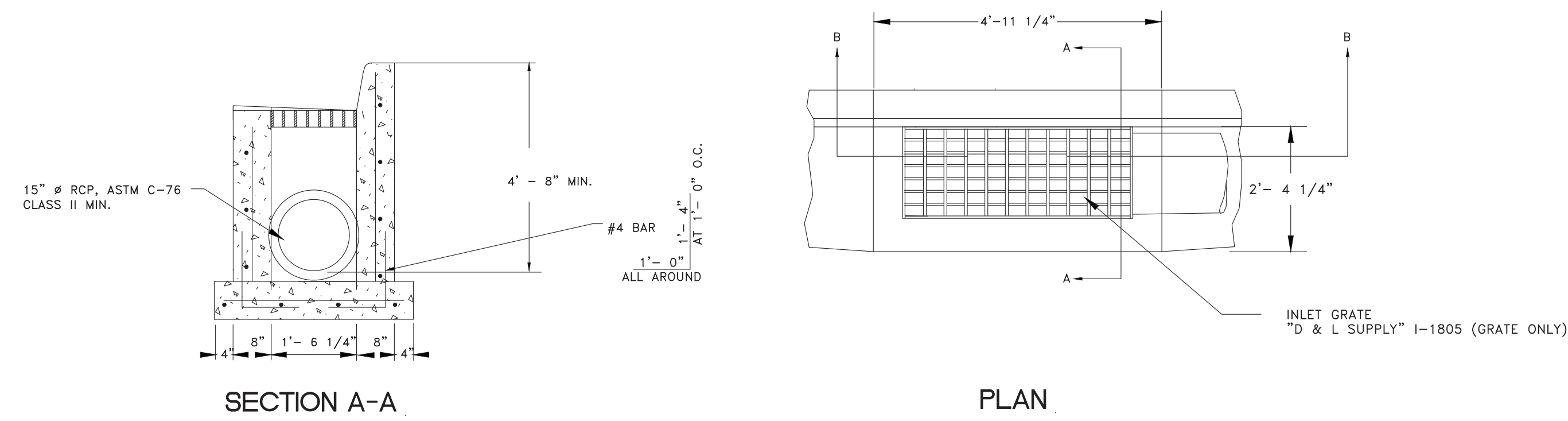
REVISIONS	DESCRIPTION
DATE	
DESIGN	TUN
DRAWN	BSD
CHECKED	TUN

DWG:

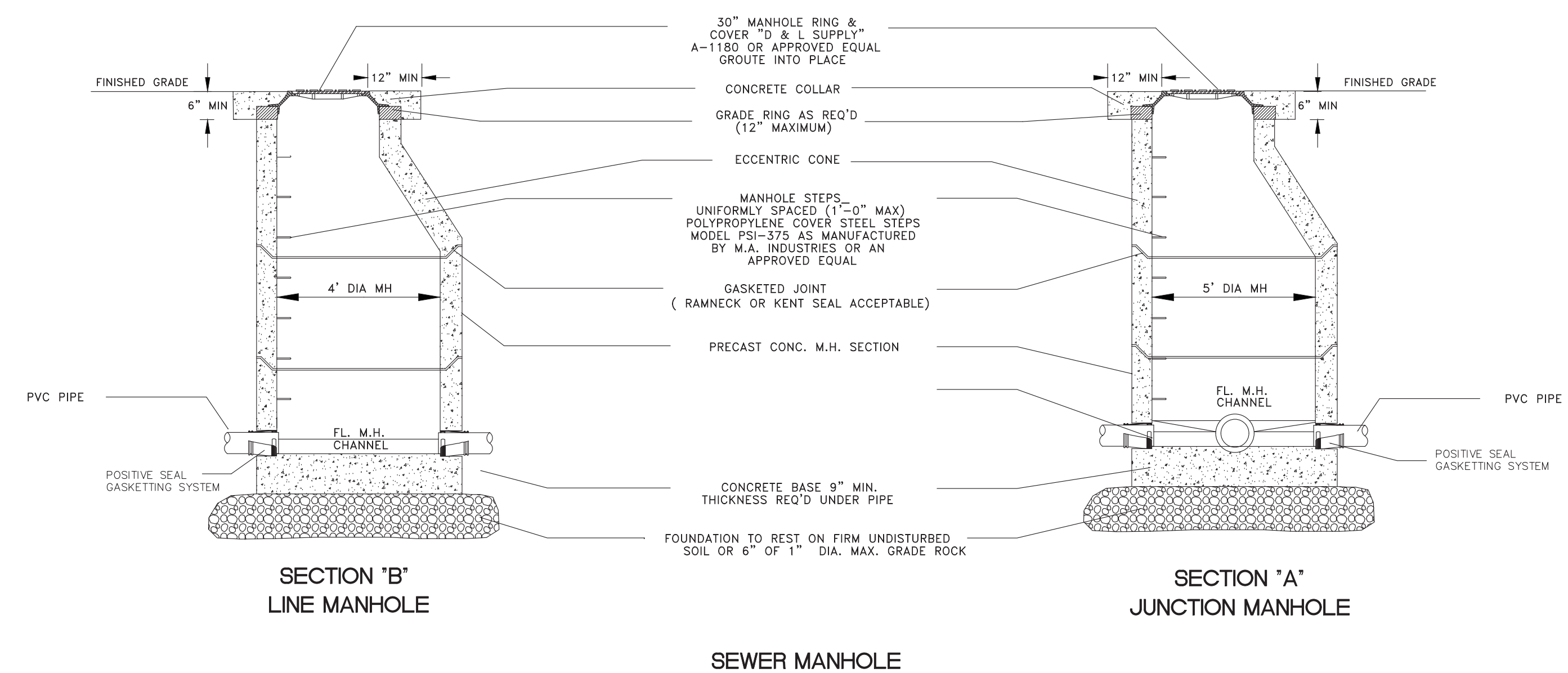


STANDARD DETAILS
 EAGLE RIDGE CLUSTER SUBDIVISION - AS-BUILT
 OPHEIKENS AND COMPANY
 EDEN, WEBER COUNTY, UTAH

GARDNER ENGINEERING
 CIVIL • LAND PLANNING
 MUNICIPAL • LAND SURVEYING
 5150 SOUTH 375 EAST OGDEN, UT
 OFFICE: 801.476.0202 FAX: 801.476.0066

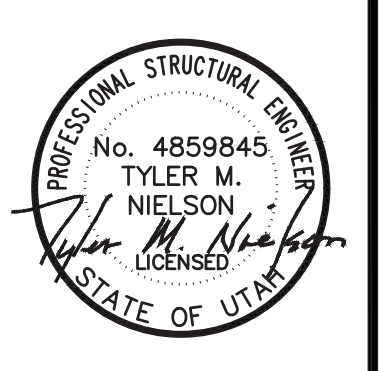


NOTE:
PRECAST REINFORCED MANHOLE
SHOWN CAST IN PLACE MANHOLE
ACCEPTABLE



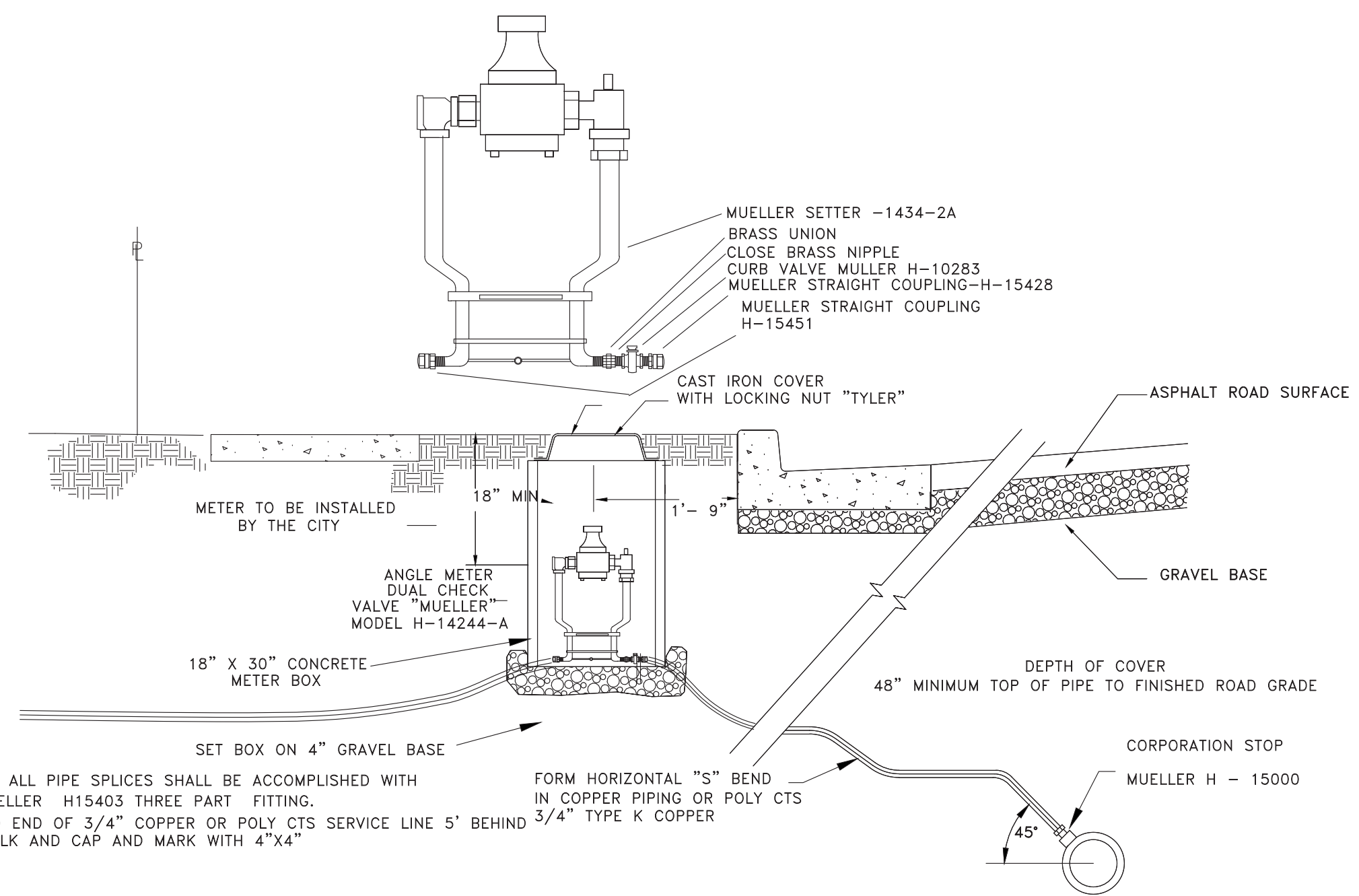
SCALE (AS NOTED)	DATE	DESIGN	DRAWN	CHECKED
	2-6-2017	TUN	BSD	TUN

REVISIONS	DESCRIPTION
DATE	



STANDARD DETAILS
EAGLE RIDGE CLUSTER SUBDIVISION - AS-BUILT
OPHEIKENS AND COMPANY
EDEN, WEBER COUNTY, UTAH

GARDNER ENGINEERING
CIVIL • LAND PLANNING
MUNICIPAL • LAND SURVEYING
5150 SOUTH 375 EAST OGDEN, UT
OFFICE: 801.476.0202 FAX: 801.476.0066



NOTE: ALL PIPE SPLICES SHALL BE ACCOMPLISHED WITH A MUeller H15403 THREE PART FITTING. EXTEND END OF 3/4" COPPER OR POLY CTS SERVICE LINE 5' BEHIND 3/4" TYPE K COPPER SIDEWALK AND CAP AND MARK WITH 4"x4"

TYPICAL 3/4" WATER LINE CONNECTION

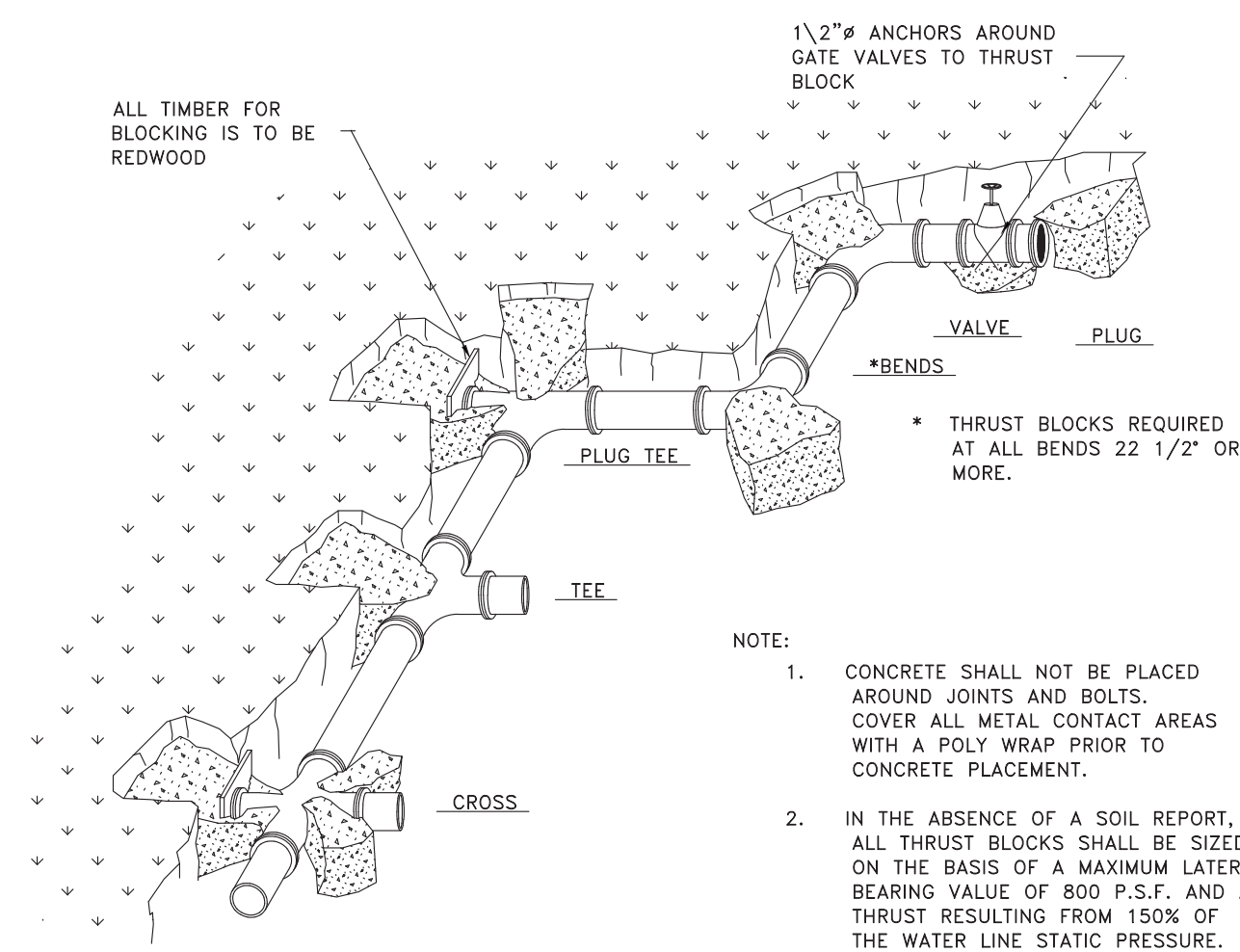


TABLE OF BEARING AREAS IN SQ. FT FOR CONCRETE THRUST BLOCKING

FOR 100 P.S.I. INTERNAL STATIC PRESSURE AND 1000 LBS.PER SQ. FT. SOIL BEARING CAPACITY.

SIZE	BENDS					TEES*	GATE VALVES	DEAD ENDS	CROSSW/1 BRANCH PLUGGED	CROSSW/2 BRAN. PLUGGED
	90°	45°	22 1/2°	11 1/4°	4"					
3	1.0	0.0	0.3	0	0.7	0.5	0.7	0.7	0.7	0.7
4	1.8	1.0	0.5	0	1.3	0.5	1.3	1.3	1.3	1.3
6	4.0	2.2	1.1	0	2.8	0.7	2.8	2.8	2.8	2.8
8	7.1	3.8	2.0	1.0	5.0	2.4	5.0	5.0	5.0	5.0
10	11.1	6.0	3.0	1.5	7.8	4.5	7.8	7.8	7.8	7.8
12	16.0	8.6	4.4	2.2	11.3	7.3	11.3	11.3	11.3	11.3
14	21.7	11.8	6.0	3.0	15.4	11.0	15.4	15.4	15.4	15.4
15	25.0	13.5	7.0	3.5	17.6		17.6	17.6	17.6	17.6
16	28.4	15.3	8.0	4.0	20.0		20.0	20.0	20.0	20.0
18	36.0	19.4	10.0	5.0	25.4		25.4	25.4	25.4	25.4
20	44.2	24.0	12.2	6.1	31.4		31.4	31.4	31.4	31.4
21	49.0	26.5	13.5	6.8	34.6		34.6	34.6	34.6	34.6
22	54.0	29.0	14.8	7.4	38.0		38.0	38.0	38.0	38.0
24	64.0	34.5	17.7	8.8	45.0		45.0	45.0	45.0	45.0
30	100.0	54.0	27.6	13.8	71.0		71.0	71.0	71.0	71.0
36	144.0	78.0	40.0	20.0	102.0		102.0	102.0	102.0	102.0

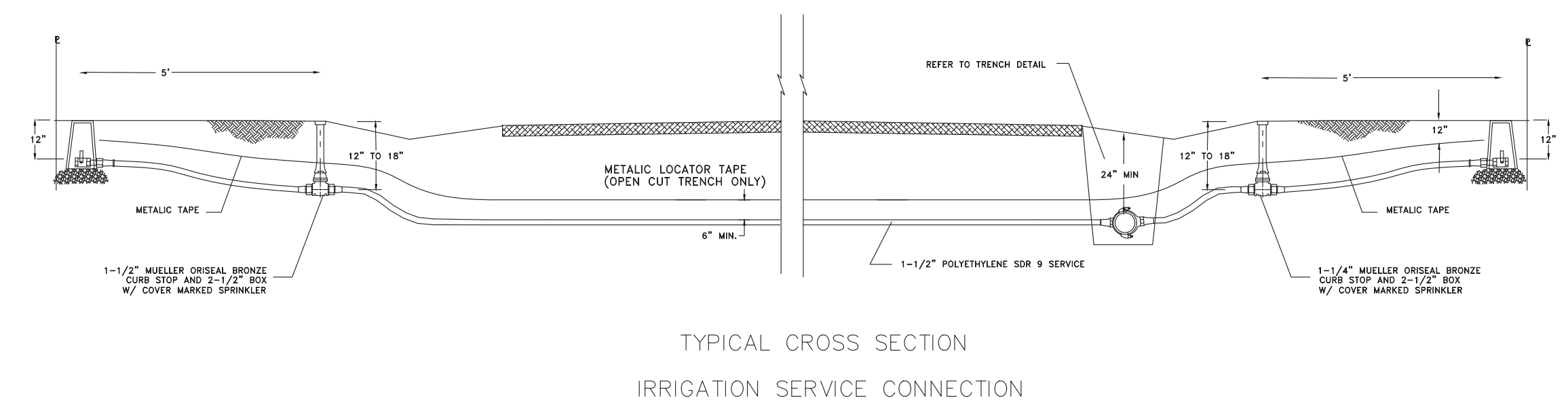
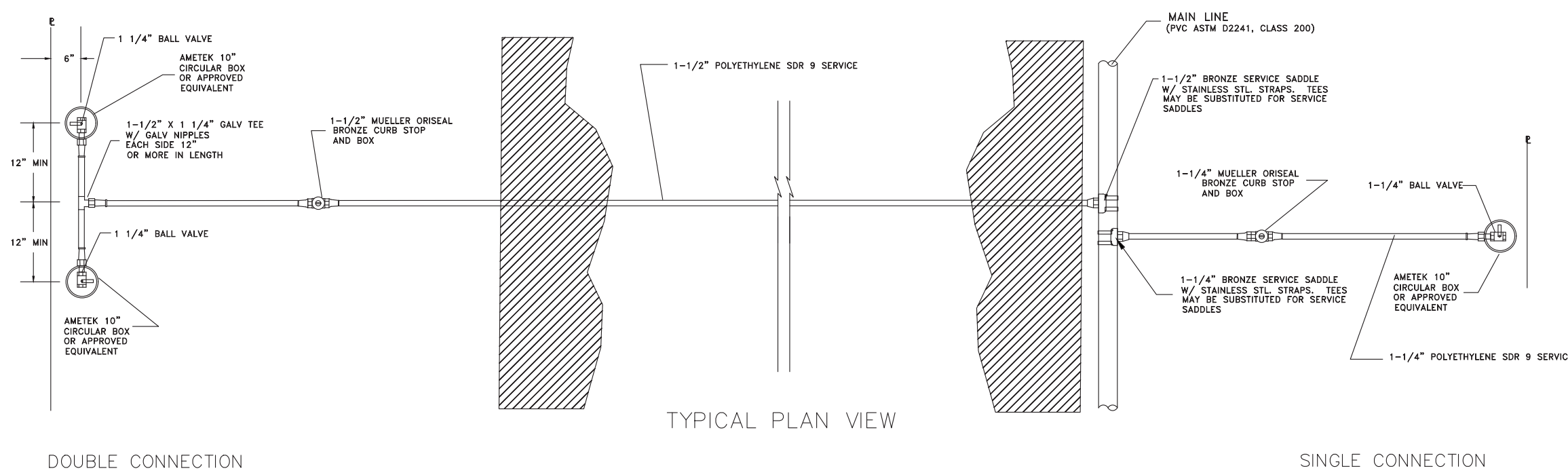
*SIZE IS BRANCH SIZE.

AREAS GIVEN IN TABLE ARE BASED UPON AN INTERNAL STATIC PRESSURE OF 100 P.S.I AND A SOIL BEARING CAPACITY OF 1000 LBS PER SQ. FT. BEARING AREAS FOR ANY PRESSURE AND SOIL BEARING CAPACITY MAY BE OBTAINED BY MULTIPLYING THE TABULATED VALUES BY A CORRECTION FACTOR "F".

F = ACTUAL SPECIFIED TEST PRESSURE IN HUNDREDS OF LBS/SQ. IN. / ACTUAL SOIL BEARING CAPACITY IN THOUSANDS OF LBS.

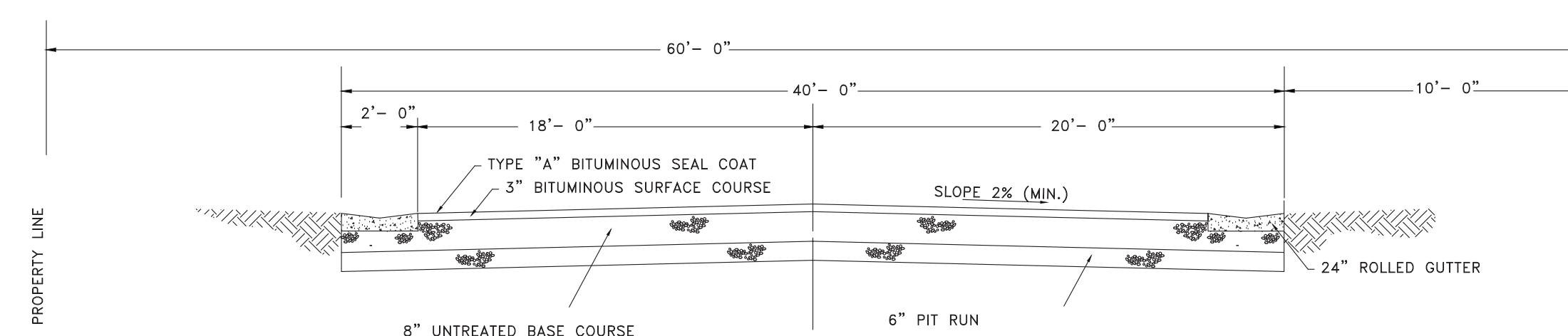
EXAMPLE: TO FIND BEARING AREA FOR 8"-90° BEND WITH A STATIC INTERNAL PRESSURE OF 150 P.S.I AND WITH A SOIL BEARING CAPACITY OF 3000 LBS. PER SQ. FT.
F = 1.5 / 3 = 0.5
0.5 X 7.1 = 3.56 SAU 4 SQ. FT. OR 2FT. LONG BY 2FT. HIGH.

THRUST BLOCKING



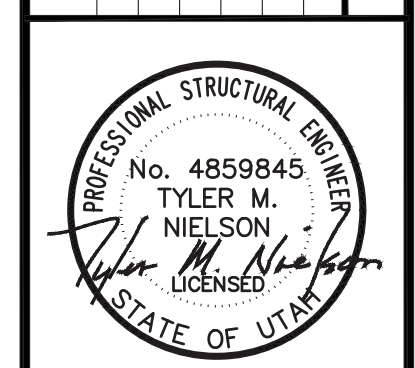
- NOTES:
- SERVICES MAY BE TUNNELED OR JETTED UNDER PAVEMENT AREAS. AREAS REQUIRING SURFACE CUTTING SHALL REQUIRE SURFACE RESTORATION.
 - IF TAPPING SADDLES ARE USED, METHOD OF SAWING/DRILLING TAP HOLES, TYPE OF SADDLE AND INSTALLATION PROCEDURES MUST BE APPROVED.
 - POLYETHYLENE PIPE SHALL BE SDR 9 - PE 3408 MANUFACTURED TO MEET THE REQUIREMENTS OF ASTM D-2737.
 - P.V.C. PIPE SHALL BE ASTM D2241, CLASS 200.
 - NO T- = RING SADDLES.
 - ALL CONNECTIONS SHALL BE MADE WITH MUeller 110 COMPRESSION CONNECTIONS.

STANDARD 60' SUBDIVISION ROADWAY SECTION



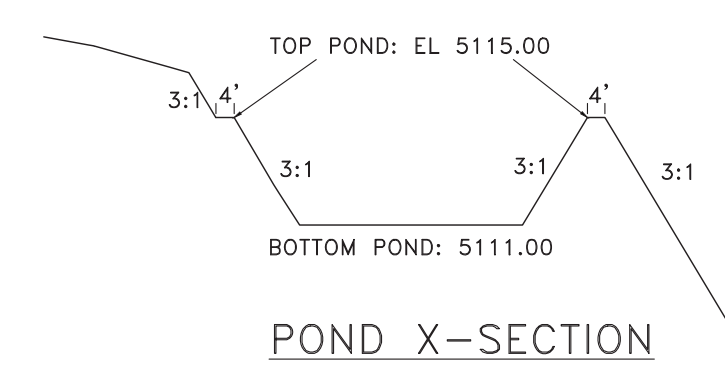
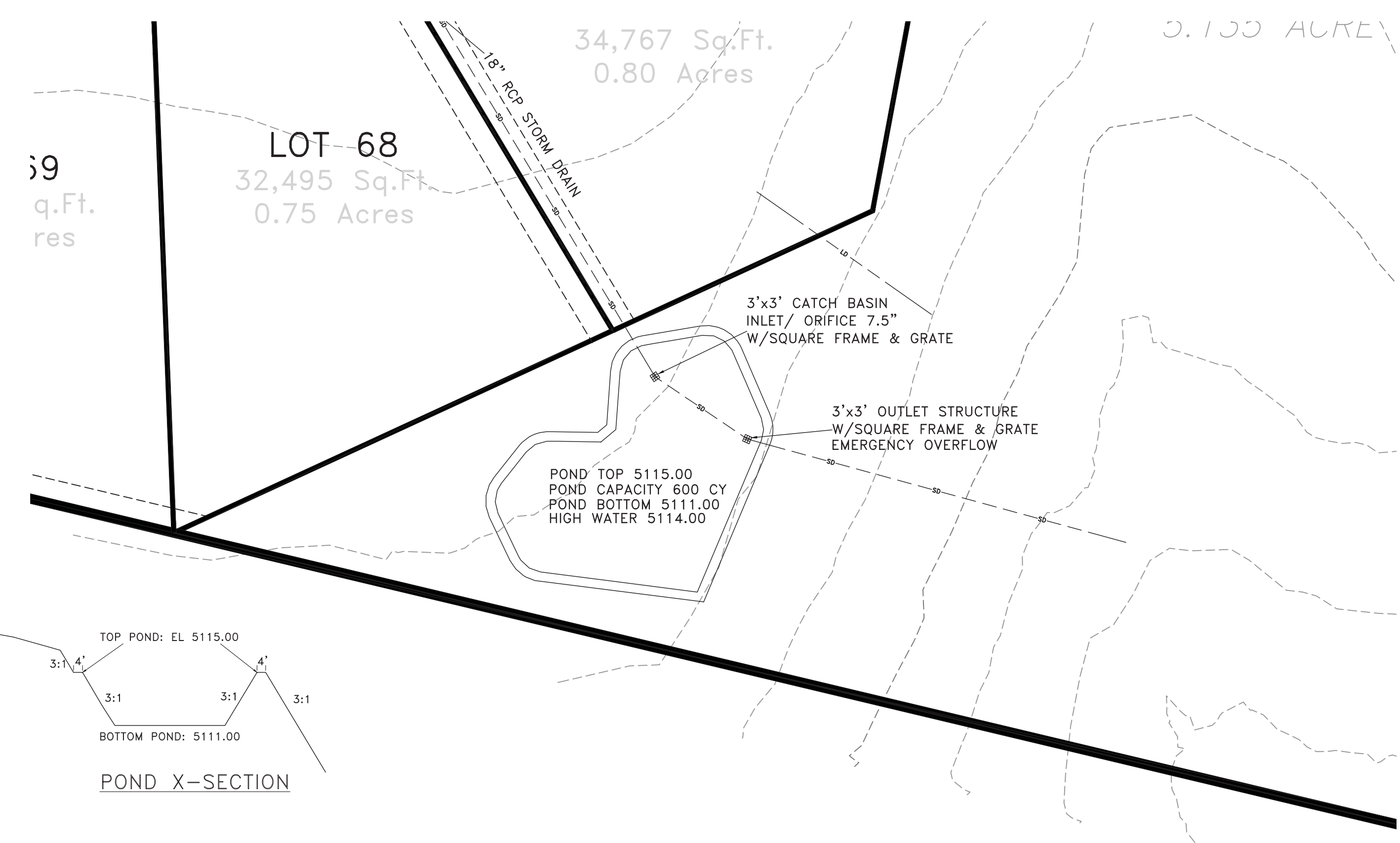
SCALE (AS NOTED)
DATE 2-6-2017
DESIGN TJN
DRAWN BSD
CHECKED TJN

REVISIONS	DESCRIPTION
DATE	

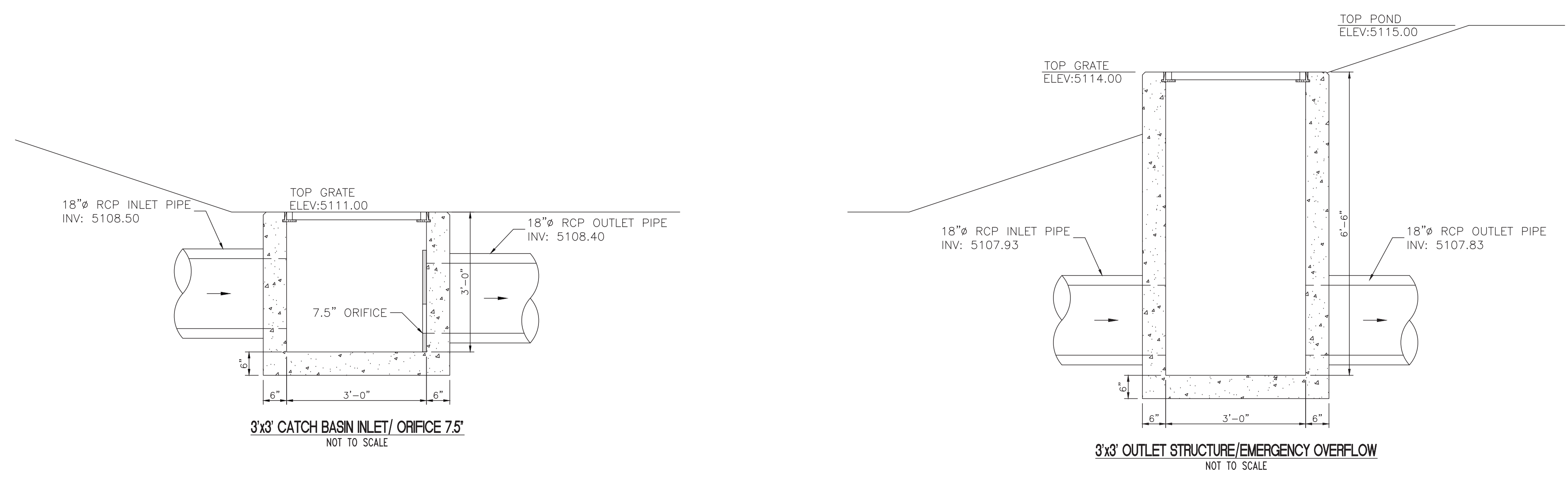


DETAILS
EAGLE RIDGE CLUSTER SUBDIVISION - AS-BUILT
OPHEIKENS AND COMPANY
EDEN, WEBER COUNTY, UTAH

GARDNER ENGINEERING
CIVIL - LAND PLANNING
MUNICIPAL - LAND SURVEYING
5150 SOUTH 375 EAST OGDEN, UT
OFFICE: 801.476.0202 FAX: 801.476.0066



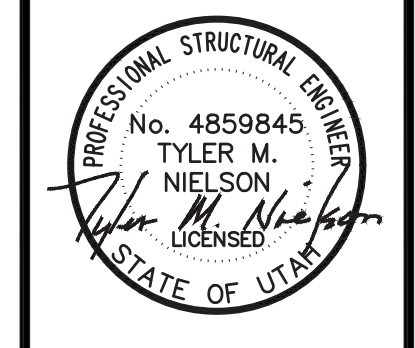
DETENTION POND
 SCALE: 1" = 40'



SCALE: (AS NOTED)
 DATE: 2-6-2017
 DESIGN: TJN
 DRAWN: BSD
 CHECKED: TJN

REVISIONS	DESCRIPTION
DATE	

DWG:



POND OUTLET STRUCTURE DETAILS
 EAGLE RIDGE CLUSTER SUBDIVISION - AS-BUILT
 OPHEIKENS AND COMPANY
 EDEN, WEBER COUNTY, UTAH

GARDNER ENGINEERING
 CIVIL • LAND PLANNING
 MUNICIPAL • LAND SURVEYING
 5150 SOUTH 375 EAST OGDEN, UT
 OFFICE: 801.476.0202 FAX: 801.476.0066