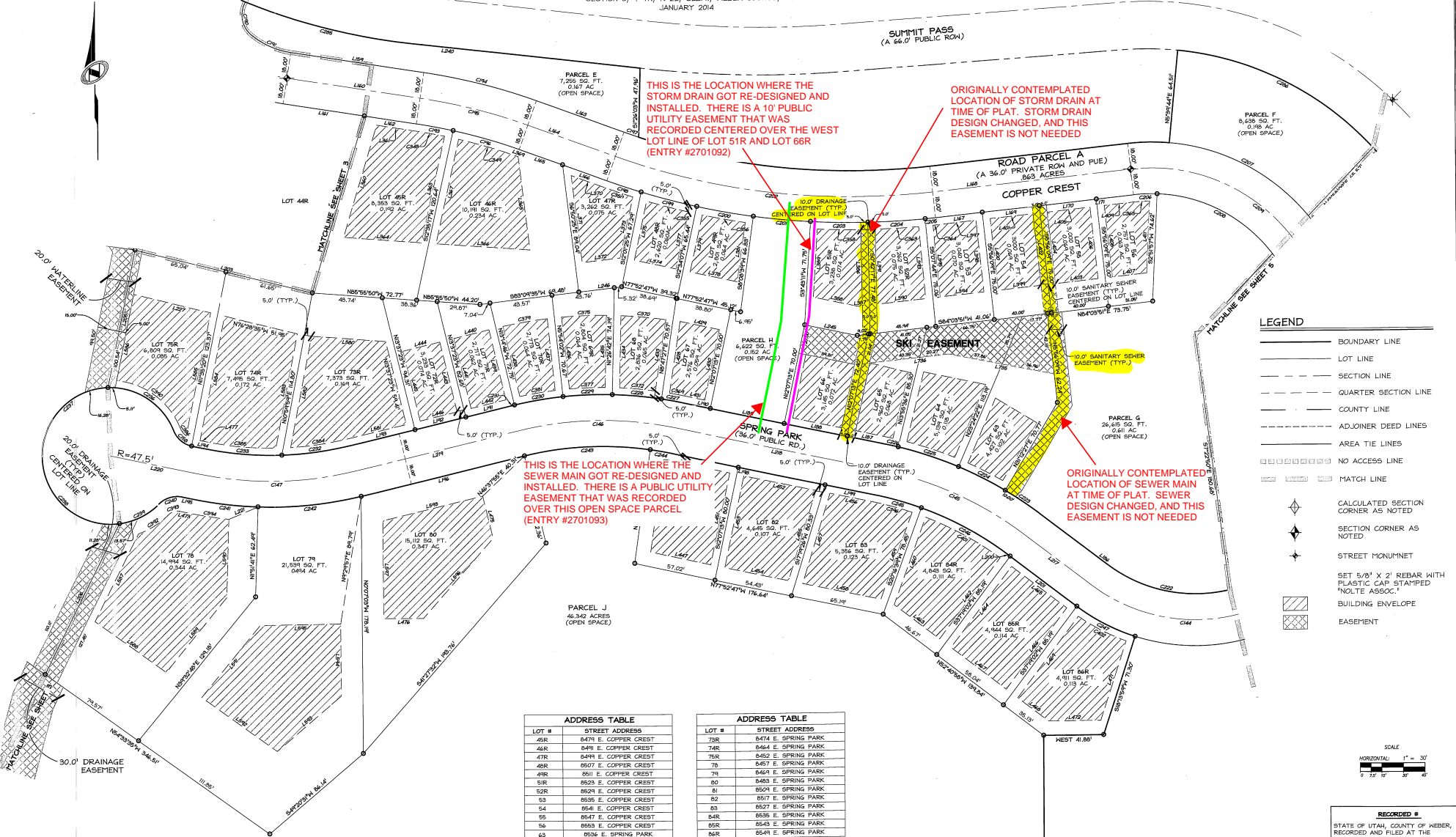


# SUMMIT EDEN PHASE 1C

LOCATED IN THE SOUTH 1/2 OF SECTIONS 5 AND THE NORTH 1/2 OF SECTION 8, T 7N, R 2E, S18M, WEBER COUNTY, UTAH.  
JANUARY 2014



**LEGEND**

- BOUNDARY LINE
- LOT LINE
- - - SECTION LINE
- - - QUARTER SECTION LINE
- - - COUNTY LINE
- - - ADJOINER DEED LINES
- - - AREA TIE LINES
- NO ACCESS LINE
- ▨ MATCH LINE
- ◆ CALCULATED SECTION CORNER AS NOTED
- ◆ SECTION CORNER AS NOTED
- ◆ STREET MONUMENT
- SET 5/8" X 2" REBAR WITH PLASTIC CAP STAMPED "NOLTE ASSOC."
- ▨ BUILDING ENVELOPE
- ▨ EASEMENT

**ADDRESS TABLE**

LOT #	STREET ADDRESS
48R	8474 E. COPPER CREST
48R	8481 E. COPPER CREST
47R	8494 E. COPPER CREST
48R	8507 E. COPPER CREST
48R	8511 E. COPPER CREST
51R	8528 E. COPPER CREST
52R	8524 E. COPPER CREST
53	8535 E. COPPER CREST
54	8541 E. COPPER CREST
55	8547 E. COPPER CREST
56	8553 E. COPPER CREST
63	8536 E. SPRING PARK
64	8532 E. SPRING PARK
65	8528 E. SPRING PARK
66	8520 E. SPRING PARK
67	8508 E. SPRING PARK
68	8502 E. SPRING PARK
69R	8498 E. SPRING PARK
70R	8492 E. SPRING PARK
71R	8488 E. SPRING PARK
72R	8482 E. SPRING PARK

**ADDRESS TABLE**

LOT #	STREET ADDRESS
73R	8474 E. SPRING PARK
74R	8464 E. SPRING PARK
75R	8452 E. SPRING PARK
76	8457 E. SPRING PARK
79	8448 E. SPRING PARK
80	8453 E. SPRING PARK
81	8504 E. SPRING PARK
82	8517 E. SPRING PARK
83	8507 E. SPRING PARK
84R	8535 E. SPRING PARK
85R	8543 E. SPRING PARK
86R	8549 E. SPRING PARK

SUMMIT EDEN PHASE 1C  
LOTS 45-49, 51-56, 63-75, 78-86, & PARCELS E-J

LOCATED IN THE SOUTH 1/2 OF SECTION 5 AND THE NORTH 1/2 SECTION 8 OF TOWNSHIP 7 NORTH, RANGE 2 EAST, SALT LAKE BASE AND MERIDIAN, WEBER COUNTY, UTAH

Sheet 4 of 6

**NV5**  
NOLTE VERTICAL FIVE

227 SOUTH STATE STREET, SUITE 300  
HELENA, MONTANA 59601  
WWW.NV5.COM

RECORDED #  
STATE OF UTAH, COUNTY OF WEBER,  
RECORDED AND FILED AT THE  
REQUEST OF 2672945  
ENTRY NO. \_\_\_\_\_  
DATE: 75 TIME: \_\_\_\_\_  
BOOK: 75 PAGE: 38  
FEE \$ \_\_\_\_\_

SCALE  
HORIZONTAL: 1" = 30'  
0 10 20 30 40

WEBER COUNTY RECORDER