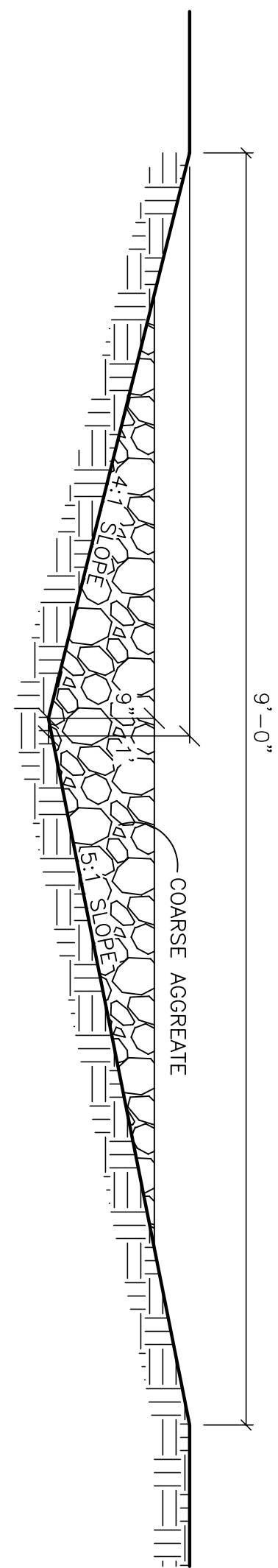


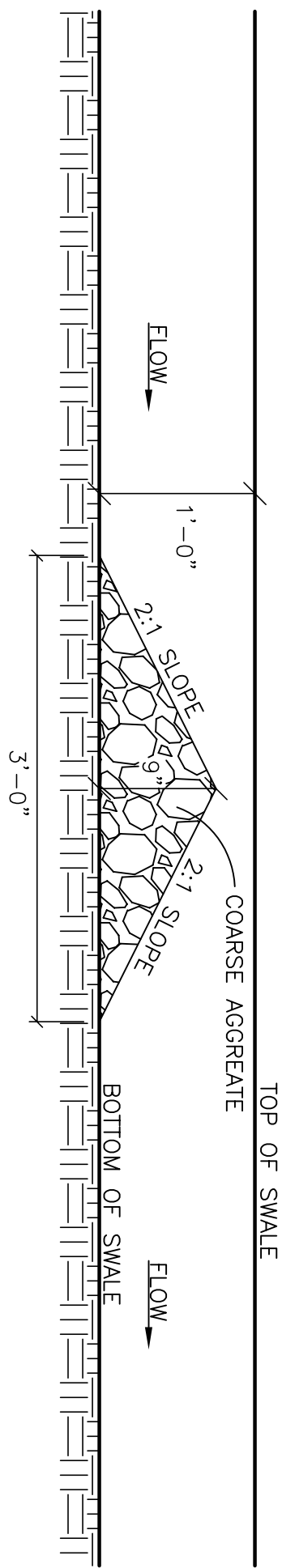
Street Section (60' R.O.W.)

SCALE: NONE



Swale Detail W/ Coarse Aggregate

SCALE: NONE



Swale Detail W/ Rock Check Dam

SCALE: NONE

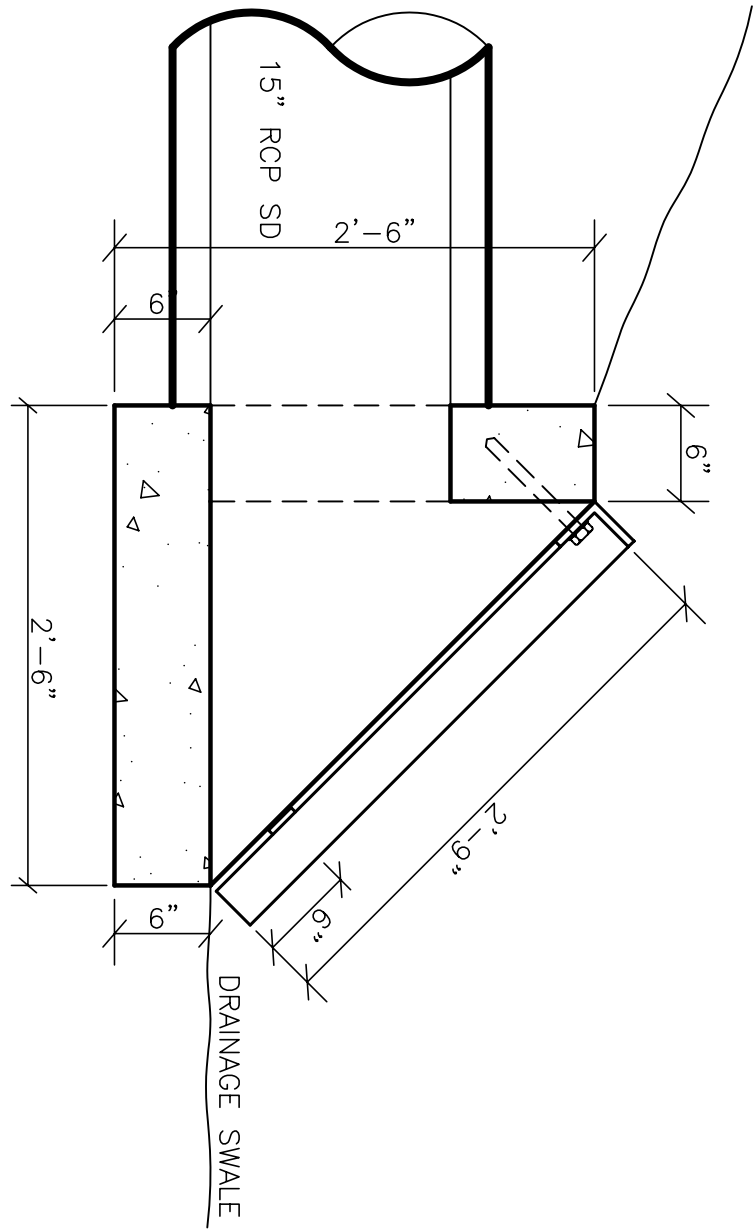
— W —	= PROPOSED CULINARY WATER LINE
— EX.W —	= EXISTING CULINARY WATER LINE
— SS —	= PROPOSED SANITARY SEWER LINE
— EX.SS —	= EXISTING SANITARY SEWER LINE
— SD —	= PROPOSED STORM DRAIN LINE
— EX.SD —	= EXISTING STORM DRAIN LINE
— LD —	= PROPOSED LAND DRAIN LINE
— EX.LD —	= EXISTING LAND DRAIN LINE
— SW —	= PROPOSED SECONDARY WATER LINE
— EX.SW —	= EXISTING SECONDARY WATER LINE
— IRR —	= PROPOSED IRRIGATION LINE
— EX.IRR —	= EXISTING IRRIGATION LINE
— OHP —	= EXISTING OVERHEAD POWER LINE
— TEL —	= EXISTING TELEPHONE LINE
— GAS —	= EXISTING NATURAL GAS LINE
— —	= EXISTING EDGE OF PAVEMENT
— X — X —	= FENCE LINE
— — —	= MASONRY BLOCK/RETAINING WALL
— — —	= DITCH/SWALE FLOWLINE
●	= PROPOSED FIRE HYDRANT
○	= EXISTING FIRE HYDRANT
●	= PROPOSED MANHOLE
○	= EXISTING MANHOLE
•	= PROPOSED SEWER CLEAN-OUT
⌵	= PROPOSED GATE VALVE
⌵	= EXISTING GATE VALVE
⊠	= PROPOSED WATER METER
⊠	= EXISTING WATER METER
■	= PROPOSED CATCH BASIN

Legend

□	= EXISTING CATCH BASIN	L.F.	= LINEAR FEET
●	= EXISTING SPRINKLER	NG	= NATURAL GRADE
⌵	= PLUG W/ 2" BLOW-OFF	O.C.	= ON CENTER
●	= AIR-VAC ASSEMBLY	PC	= POINT OF CURVE
▼	= PROPOSED REDUCER	PNC	= POINT OF REVERSE CURVE
⌵	= PLUG & BLOCK	PT	= POINT OF TANGENT
⌵	= STREET LIGHT	PP	= POWER/UTILITY POLE
⌵	= SIGN	P.U.E.	= PUBLIC UTILITY EASEMENT
BUDG	= BUILDING	R/C	= REBAR & CAP
BVC	= BEGIN VERTICAL CURVE	RCB	= REINFORCED CONCRETE BOX
C&G	= CURB & GUTTER	RCP	= REINFORCED CONCRETE PIPE
CB	= CATCH BASIN	RIM	= RIM OF MANHOLE
C.F.	= CUBIC FEET	R.O.W.	= RIGHT-OF-WAY
C.F.S.	= CUBIC FEET PER SECOND	SD	= STORM DRAIN
CL	= CENTERLINE	SS	= SANITARY SEWER
DI	= DUCTILE IRON	SW	= SECONDARY WATER
EP	= EDGE OF PAVEMENT	TBC	= TOP BACK OF CURB
EVC	= END VERTICAL CURVE	TOE	= TOE OF SLOPE
FC	= FENCE CORNER	TOW	= TOP OF WALL
FF	= FINISH FLOOR	TSW	= TOP OF SIDEWALK
FFE	= FINISH FLOOR ELEVATION	VPI	= VERTICAL POINT OF INTERSECT.
FG	= FINISHED GRADE	W	= CULINARY WATER
FH	= FIRE HYDRANT	WM	= WATER METER
FL	= FLOW LINE		= NEW PAVEMENT
GB	= GRADE BREAK		= NEW CONCRETE
HDPE	= HIGH DENSITY POLYETHYLENE PIPE		
INV	= INVERT		
IRR	= IRRIGATION		
LD	= LAND DRAIN		

General Notes

1. ALL CONSTRUCTION ON THIS PROJECT SHALL CONFORM TO THE DEVELOPMENT STANDARDS OF WEBER COUNTY AND THE STANDARD REQUIREMENTS SHALL BE MET.
2. THE LOCATION OF EXISTING UTILITIES SHOWN ARE APPROXIMATE ONLY AND THE CONTRACTOR SHALL VERIFY THE LOCATION AND ELEVATION OF ALL UTILITIES SHOWN OR NOT SHOWN ON THESE PLANS.
3. THE STREET STRUCTURAL CROSS SECTION IS PER WEBER COUNTY DETAILS CONTAINED WITHIN THESE PLANS.
4. WATER LINE PIPE SHALL BE PVC C-900 CLASS 200. WASHOUT ASSEMBLIES SHALL CONSIST OF A KUPFERLE FOUNDRY CO. 2" BLOW-OFF HYDRANT (OR COUNTY-APPROVED EQUIV.).
5. SECONDARY WATER LINE SHALL BE PVC C-900 CLASS 200. ALL SECONDARY WATER VALVE LIDS SHALL BE STAMPED "IRRIGATION".



15' Inlet w/Grate

SCALE: 1"=1'

THESE PLANS AND SPECIFICATIONS ARE THE PROPERTY OF REEVE & ASSOCIATES, INC., 4155 S. HARRISON BLVD., EXECUTIVE BLDG., #310, OGDEN, UTAH 84403, AND SHALL NOT BE PHOTOCOPIED, RE-DRAWN, OR USED ON ANY PROJECT OTHER THAN THE PROJECT SPECIFICALLY DESIGNED FOR, WITHOUT THEIR WRITTEN PERMISSION. THE OWNERS AND ENGINEERS OF REEVE & ASSOCIATES, INC. DISCLAIM ANY LIABILITY FOR ANY CHANGES OR MODIFICATIONS MADE TO THESE PLANS OR THE DESIGN THEREON WITHOUT THEIR CONSENT.

Fenster Farm Subdivision  
Phase-1  
WARREN, WEBER COUNTY, UTAH

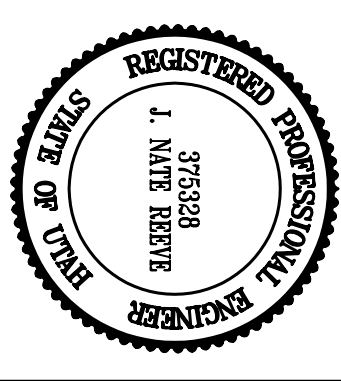
Street Cross-Sections/  
Master Legend/Notes

REVISIONS

DATE	DESCRIPTION
4-14-11 RH	County Comments



**Reeve & Associates, Inc.**  
4155 S. HARRISON BLVD., SUITE 310, OGDEN, UTAH 84403  
TEL: (801) 621-3100 FAX: (801) 621-2666 www.reeve-assoc.com  
TRAFFIC ENGINEERS • CIVIL ENGINEERS • LANDSCAPE ARCHITECTS



Project Info.

Engineer:	J. NATE REEVE, P.E.
Draftsman:	R. HANSEN
Begin Date:	MARCH 16, 2011
Name:	FENSTER FARM SUBDIVISION
Phase:	PHASE-1
Number:	1714-26

Sheet	6
2	