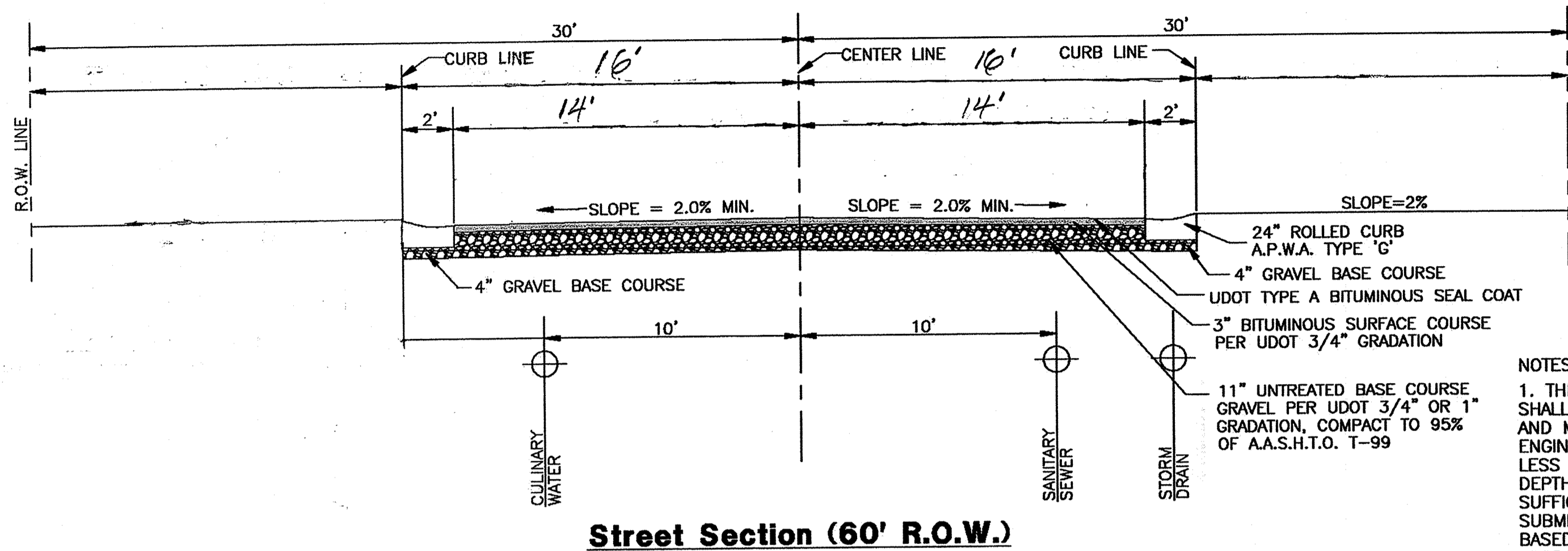


3600 WEST STREET

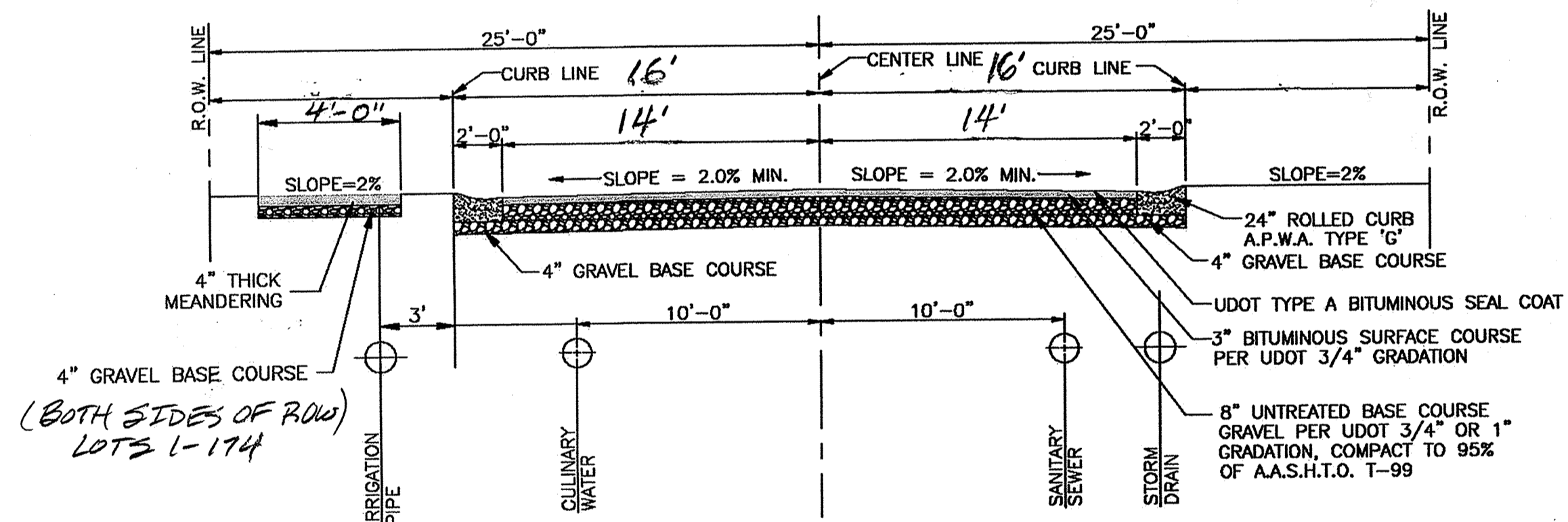


Street Section (60' R.O.W.)

SCALE: NONE

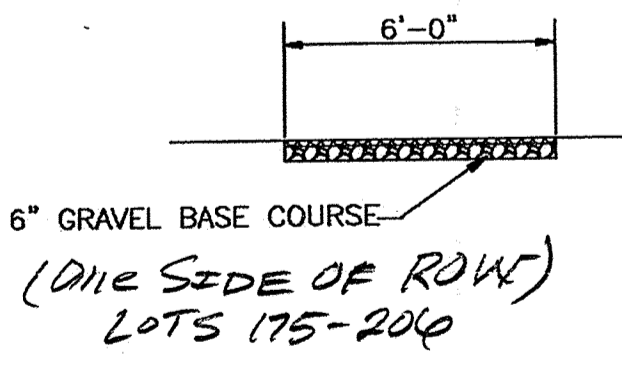
- NOTES:
1. THESE PAVEMENT THICKNESSES SHALL BE CONSIDERED AS MINIMUMS AND MAY BE INCREASED BY THE COUNTY ENGINEER WHEN SUBGRADE C.B.R. IS LESS THAN 10 OR WHEN A GREATER DEPTH IS NECESSARY TO PROVIDE SUFFICIENT STABILITY. DESIGNER MAY SUBMIT AN ALTERNATIVE PAVEMENT DESIGN BASED ON A DETAILED SOILS ANALYSIS FOR APPROVAL BY THE COUNTY ENGINEER.
 2. GRADUALLY ADJUST DEPTH OF WATER, SO NO FITTINGS WILL BE REQUIRED

TERAKEE FARM



Street Section (50' R.O.W.)

- NOTES:
1. THESE PAVEMENT THICKNESSES SHALL BE CONSIDERED AS MINIMUMS AND MAY BE INCREASED BY THE COUNTY ENGINEER WHEN SUBGRADE C.B.R. IS LESS THAN 10 OR WHEN A GREATER DEPTH IS NECESSARY TO PROVIDE SUFFICIENT STABILITY. DESIGNER MAY SUBMIT AN ALTERNATIVE PAVEMENT DESIGN BASED ON A DETAILED SOILS ANALYSIS FOR APPROVAL BY THE COUNTY ENGINEER.
 2. GRADUALLY ADJUST DEPTH OF WATER, SO NO FITTINGS WILL BE REQUIRED



TERAKEE FARM STREET RIGHT-OF-WAY (50' & 60') & IN STREET UTILITIES (SANITARY SEWER, CULINARY WATER, AND SECONDARY PRESSURE IRRIGATION.