

HIDDEN HAVEN ESTATES SUBDIVISION 2nd AMENDMENT

Amending Lot 4, Hidden Haven Estates Subdivision and
 Lot 12, Hidden Haven Estates Subdivision Lot 3 1st Amendment
 A Part of the Northwest Quarter of Section 1 and the Northeast Quarter of Section 2,
 Township 6 North, Range 1 East, Salt Lake Base and Meridian, Weber County, Utah
 March 2017

CURVE TABLE						
CURVE	RADIUS	LENGTH	DELTA	BEARING	CHORD	TANGENT
C1	55.00'	200.67'	209°02'40"	N 32°01'43" E	106.49'	212.33'
C2	30.00'	38.17'	72°53'43"	N 36°02'46" W	35.65'	22.16'
C3	1069.07'	129.51'	6°56'27"	N 3°04'08" W	129.43'	64.83'
C4	56.43'	58.27'	59°09'34"	N 23°02'26" E	55.71'	32.03'
C5	30.00'	37.68'	71°58'18"	N 8°10'27" W	35.26'	21.78'
C6	55.00'	242.80'	252°55'52"	N 81°20'46" E	88.46'	74.42'
C7	55.00'	112.77'	117°28'52"	S 30°55'44" E	94.03'	90.60'
C8	55.00'	130.02'	135°27'00"	N 22°36'20" E	101.79'	134.27'
C9	30.00'	23.83'	45°31'16"	S 22°21'32" E	23.21'	12.59'
C10	1044.07'	126.48'	6°56'27"	N 3°04'08" W	126.40'	63.32'
C11	81.43'	84.08'	59°09'34"	S 23°02'26" W	80.39'	46.22'
C12	55.00'	42.09'	43°51'03"	S 21°31'26" E	41.07'	22.14'

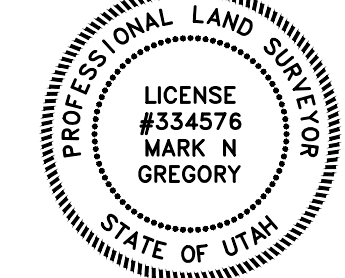
LINE TABLE		
LINE	BEARING	LENGTH
L1	S 24°28'58" E	0.27'
L2	N 0°24'06" E	2.31'
L3	N 52°37'13" E	1.11'
L4	N 52°37'13" E	6.84'
L5	S 45°07'10" E	43.74'
L6	S 45°07'10" E	24.90'
L7	S 44°52'50" W	12.67'
L8	S 45°07'10" E	91.71'
L9	S 44°52'50" W	30.00'

WEBER/MORGAN HEALTH DEPARTMENT PERCOLATION TEST

Date: November 13, 2016
 Property Location: 1662 North 6250 East, Eden (Hidden Haven Estates Subdivision 4A)
 Tax I.D. No.: 20-104-0004
 Conducted By: Les Vierra

INITIAL WATER DEPTH (IN)	BEGINNING TIME	FINAL DEPTH TO WATER	ENDING TIME	DISTANCE TO WATER DROPPED (IN)	ELAPSED TIME (MIN)	PERCOLATION RATE (MIN)
10	3:00	11 4/16	3:30	1 4/16	30	24
10	3:00	11 4/16	3:30	1 4/16	30	24

INITIAL WATER DEPTH (IN)	BEGINNING TIME	FINAL DEPTH TO WATER	ENDING TIME	DISTANCE TO WATER DROPPED (IN)	ELAPSED TIME (MIN)	PERCOLATION RATE (MIN)
8 1/16	2:02	10	2:32	1 15/16	30	15
8 2/16	2:34	10 2/16	3:04	2	30	15
7 8/16	3:06	9 2/16	3:36	1 10/16	30	15
7 14/16	3:38	9 5/16	4:08	1 11/16	30	18



Date _____
 Mark N Gregory
 P.L.S. No. 334576

OWNERS DEDICATION

Know all men by these presents that the undersigned owners of the tract of land described above, having caused the same to be subdivided into lots and streets to be hereafter known as:

HIDDEN HAVEN ESTATES SUBDIVISION 2ND AMENDMENT

do hereby dedicate and reserve unto themselves, their heirs, their grantees and assigns, a right-of-way to be used in common with all others within said subdivision (and those adjoining subdivisions that may be subdivided by the undersigned owners, their successors, or assigns) on, over and across all those portions or parts of said tract of land designated on said plat as private streets (private rights-of-way) as access to the individual lots, to be maintained by a lot (unit) owners' association whose membership consists of said owners, their grantees, successors, or assigns and also grant and dedicate a perpetual right and easement over, upon and under the lands designated hereof as public utility, storm water detention ponds, drainage easements and canal maintenance easement, the same to be used for the installation, maintenance and operation of public utility service lines, storm drainage facilities, irrigation canals or for the perpetual preservation of water channels in their natural state whichever is applicable as may be authorized by the governing authority, with no buildings or structures being erected within such easements.

In witness whereof, I have hereunto set my/our hand this _____ day of _____ 20____.

Randy S. Shepherd (Owner)

Steffnie Shepherd (Owner)

In witness whereof, I have hereunto set my/our hand this _____ day of _____ 20____.

Pineview Partners LLC (Owner)

Print Name _____

Title _____

ACKNOWLEDGMENT

STATE OF _____ }
 COUNTY OF _____ } ss

On the _____ day of _____, 20____, before me, _____, personally appeared Randy S. Shepherd and Steffnie Shepherd, [] personally known to me, or [] proved to me on the basis of satisfactory evidence, to be the persons whose names are subscribed to the within instrument and acknowledged to me that they executed the same in their authorized capacity, and that by their signatures on the instrument the persons, or the entity upon behalf of which the persons acted, executed the instrument.

Commission Number _____

My Commission Expires _____

Printed Name _____ A Notary Public Commissioned in Utah

ACKNOWLEDGMENT

STATE OF _____ }
 COUNTY OF _____ } ss

On the _____ day of _____, 20____, _____ personally appeared before me, who being by me duly sworn, did acknowledge that he is the _____ of Pineview Partners LLC, a Utah limited liability company, and that the foregoing Owner's Dedication regarding Hidden Haven Estates Subdivision 2nd Amendment was signed by him on behalf of said Pineview Partners LLC.

Commission Number _____

My Commission Expires _____

Printed Name _____ A Notary Public Commissioned in Utah

WEBER COUNTY RECORDER

Subscribed and sworn to before me on this _____ day of _____, 20____, at _____, Utah, County of Weber, recorded and filed at the request of _____

Entry No. _____

Date _____ Time _____

Book _____ Page _____

Fees _____

_____ Title _____

Attest: _____
 Weber County Recorder

Northwest Corner Section 2,
 T. 6 N., R. 1 E., S.L.B.&M.
 Found Weber County Brass Monument

North 1 Corner Section 2,
 T. 6 N., R. 1 E., S.L.B.&M.
 Found Weber County Brass Monument

North 1 Corner Section 2,
 T. 6 N., R. 1 E., S.L.B.&M.
 Found Weber County Brass Monument

North 1 Corner Section 2,
 T. 6 N., R. 1 E., S.L.B.&M.
 Found Weber County Brass Monument

North 1 Corner Section 2,
 T. 6 N., R. 1 E., S.L.B.&M.
 Found Weber County Brass Monument

North 1 Corner Section 2,
 T. 6 N., R. 1 E., S.L.B.&M.
 Found Weber County Brass Monument

North 1 Corner Section 2,
 T. 6 N., R. 1 E., S.L.B.&M.
 Found Weber County Brass Monument

North 1 Corner Section 2,
 T. 6 N., R. 1 E., S.L.B.&M.
 Found Weber County Brass Monument

North 1 Corner Section 2,
 T. 6 N., R. 1 E., S.L.B.&M.
 Found Weber County Brass Monument

North 1 Corner Section 2,
 T. 6 N., R. 1 E., S.L.B.&M.
 Found Weber County Brass Monument

North 1 Corner Section 2,
 T. 6 N., R. 1 E., S.L.B.&M.
 Found Weber County Brass Monument

North 1 Corner Section 2,
 T. 6 N., R. 1 E., S.L.B.&M.
 Found Weber County Brass Monument

North 1 Corner Section 2,
 T. 6 N., R. 1 E., S.L.B.&M.
 Found Weber County Brass Monument

North 1 Corner Section 2,
 T. 6 N., R. 1 E., S.L.B.&M.
 Found Weber County Brass Monument

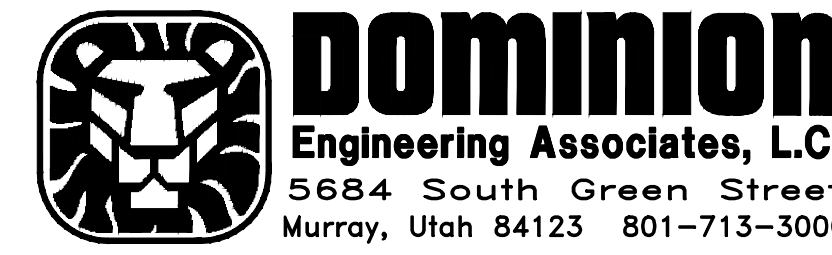
North 1 Corner Section 2,
 T. 6 N., R. 1 E., S.L.B.&M.
 Found Weber County Brass Monument

AGRICULTURAL NOTE
 Agriculture is the preferred use in the agriculture zones. Agricultural operations as specified in the Land Use Code for a particular zone are permitted at any time including the operation of farm machinery and no allowed agricultural use shall be subject to restrictions on the basis that it interferes with activities of future residents of this subdivision.

NARRATIVE
 The purpose of this plat is to amend Hidden Haven Estates Subdivision and Hidden Haven Estates Subdivision Lot 3 1st Amendment into the lot configuration shown hereon. The plats of the two subdivisions, the found U.S. Forest Service 3" Aluminum Cap monuments, the rebar w/cap's stamped "REEVE & ASSOCIATES" and the Northeast and North Quarter Corners of Section 2, Township 6 North, Range 1 East, Salt Lake Base and Meridian are used to control the location of said subdivisions.

BASIS OF BEARING
 The basis of bearing for this plat is the Utah State Plane Coordinate System NAD83 North Zone North 89°09'29" West along the north line of Section 2, Township 6 North, Range 1 East, Salt Lake Base and Meridian as shown hereon.

PREPARED BY:



OWNER:
 Intermountain Realty Group
 4571 Holladay Blvd E
 Salt Lake City, UT 84117
 801-277-0800

WEBER COUNTY PLANNING COMMISSION
 This is to certify that this subdivision plat was duly approved by the Weber County Planning Commission. Signed this day of _____, 20____.

Chairman, Weber County Planning Commission

WEBER-MORGAN HEALTH DEPARTMENT
 I hereby certify that the soils percolation rates and site conditions for this subdivision have been investigated by this office and are approved for on site wastewater disposal systems. Signed this day of _____, 20____.

Weber-Morgan Health Department

WEBER COUNTY ENGINEER
 I hereby certify that the required public improvement standards and drawings for this subdivision conform with the county standards and the amount of the financial guarantee is sufficient for the installation of these improvements.

Date _____ Weber County Engineer

WEBER COUNTY ATTORNEY
 I have examined the financial guarantee and other documents associated with this subdivision plat and in my opinion it conforms with the County Ordinances applicable thereto and now in force and effect. Signed this day of _____, 20____.

 Weber County Attorney

WEBER COUNTY SURVEYOR
 I hereby certify that the Weber County Surveyor's office has reviewed this plat for mathematical correctness, section corner data and for harmony with lines and monuments of record in county offices. The approval of this plat by the Weber County Surveyor does not relieve the licensed land surveyor who executed this plat from the responsibilities and/or liabilities associated therewith. Signed this day of _____, 20____.

 Weber County Surveyor

WEBER COUNTY COMMISSION ACCEPTANCE
 This is to certify that this subdivision plat, the dedication and the financial guarantee of public improvements thereon are hereby accepted by the Commissioners of Weber County, Utah this day of _____, 20____.

 Title _____

Attest: _____

