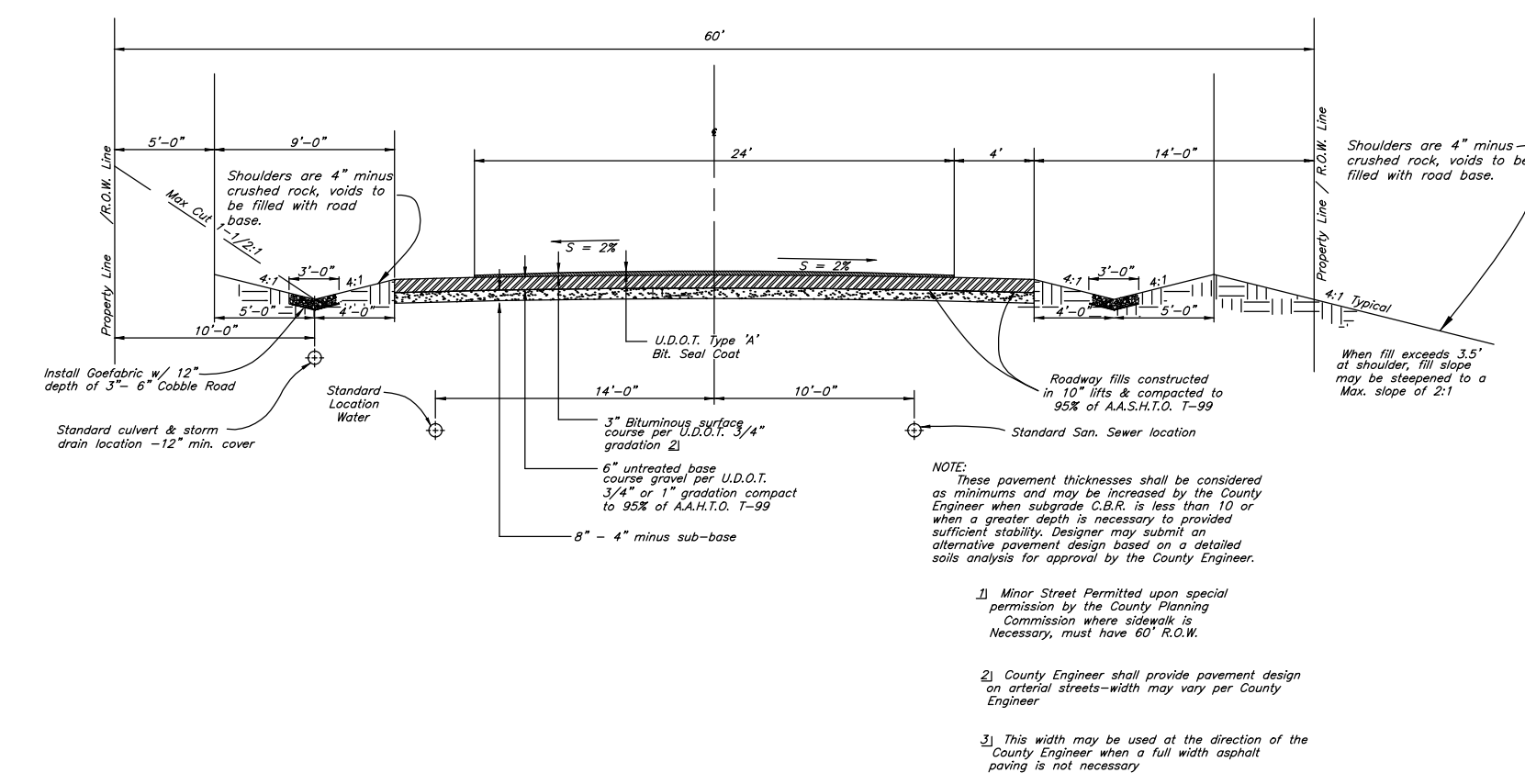
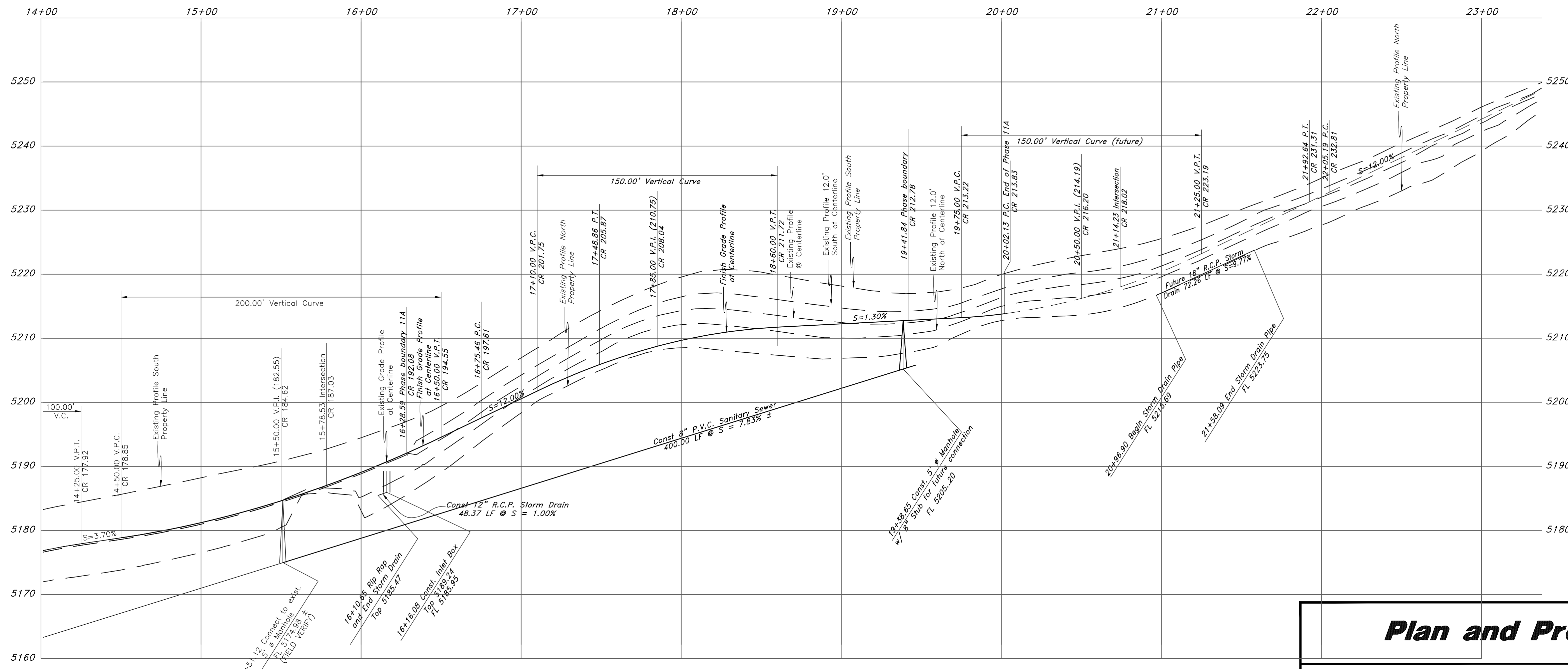


Via Cortina
60' wide Right of Way



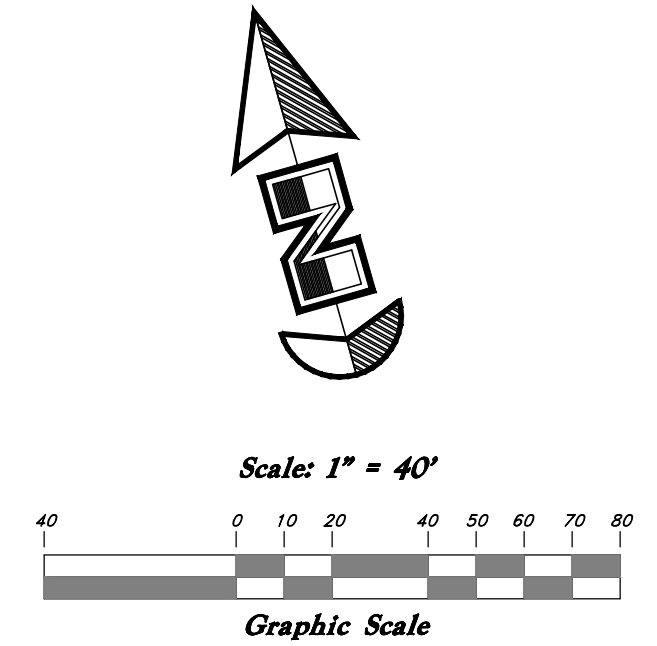
Erosion Control Notes :

1. Sandbags will be placed at discharge locations to contain and divert storm water through straw bales.
2. An earthen berm 6" high will be constructed to contain the storm water and divert it to discharge areas.
3. Storm water will be discharged into an existing drainage system. Existing Lines shall be inspected prior to Certificate of Occupancy and cleaned if necessary.
4. The Storm Water Prevention Plan shall conform to all State Division of Environmental Protection Regulations.



ENOTE Legend

- (Note: All items may not appear on drawing)
- Sanitary Sewer Manhole
 - Water Manhole
 - Storm Drain Manhole
 - Electric Manhole
 - Catch Basin
 - Proposed Fire Hydrant
 - Exist. Fire Hydrant
 - Exist. Water Valve
 - Proposed Water Valve
 - Sanitary Sewer Line
 - Culinary Water Line
 - Gas Line
 - Irrigation Line
 - Storm Drain Line
 - Telephone Line
 - Secondary Water Line
 - Underground Power Line
 - Land Drain Line
 - Fence
 - Flowline of Ditch
 - Polyvinyl Chloride
 - Edge of Asphalt
 - Centerline
 - Flowline
 - Top of Curb
 - Rim
 - Finish Grade
 - Exist. Grade
 - Direction of Flow
 - Monument
 - Section Corner
 - Rebar & Cap
 - Existing Asphalt
 - Proposed Asphalt
 - Heavy Duty Asphalt
 - Concrete
 - Building or Structure



| | | | |
|---|---------------------------------|--|----------------------------|
| Plan and Profile | | The Summit at Ski Lake Phase 11 | |
| A part of the Southwest 1/4 of Section 13, a part of the Northeast 1/4 of Section 23, and a part of the Northwest 1/4 of Section 24, T6N, R1E, SLB&M, U.S. Survey | | SCALE : 1" = 40' | DATE : 17 Dec, 2010 |
| DRAWN : TK | REVISIONS : 19 Sep, 2011 | DRWG. NO. 1 | Of 2 |
| GREAT BASIN ENGINEERING NORTH CONSULTING ENGINEERS AND SURVEYORS 5746 South 1475 East - Suite 200 Ogden, Utah 84403 P.O. Box 150048, Ogden, Utah 84415 Ogden (801)394-4515 Salt Lake City (801)321-0222 Fax (801)392-7544 | | 96N120SUMMIT 11AAMP | |