

**Legend**

- (Note: All items may not appear on drawing)
- San. Sewer Manhole
  - Storm Drain Manhole
  - Catch Basins
  - Exist. Fire Hydrant
  - Fire Hydrant
  - Water Valve
  - Sanitary Sewer
  - Culinary Water
  - Gas Line
  - Irrigation Line
  - Storm Drain
  - Telephone Line
  - Secondary Waterline
  - Power Line
  - Fire Line
  - Land Drain
  - Power pole
  - Power pole w/guy
  - Light Pole
  - Fence
  - Flowline of ditch
  - Overhead Power line
  - Corrugated Metal Pipe
  - Concrete Pipe
  - CP
  - DI
  - PVC
  - Polyvinyl Chloride
  - Top of Asphalt
  - EA
  - CL
  - Centerline
  - FL
  - TC
  - FF
  - Finish Floor
  - FG
  - Top of Wall
  - TW
  - Top of Concrete
  - TCN
  - Finish Contour
  - Ext. Contour
  - 95.33TA
  - 95.32TA
  - Ext. Grade
  - Ridge Line
  - Direction of Flow
  - Monument
  - Section Corner
  - Rebar & Cap
  - Existing Asphalt
  - New Asphalt

**General Notes**

All stations along centerline of road shall conform to the Utah Department of Transportation Standards. Top of 8" waterline shall have a minimum of at least 60" of cover over the top of water main. Waterline is also to have metallic locator tape installed 12-24" above pipe.

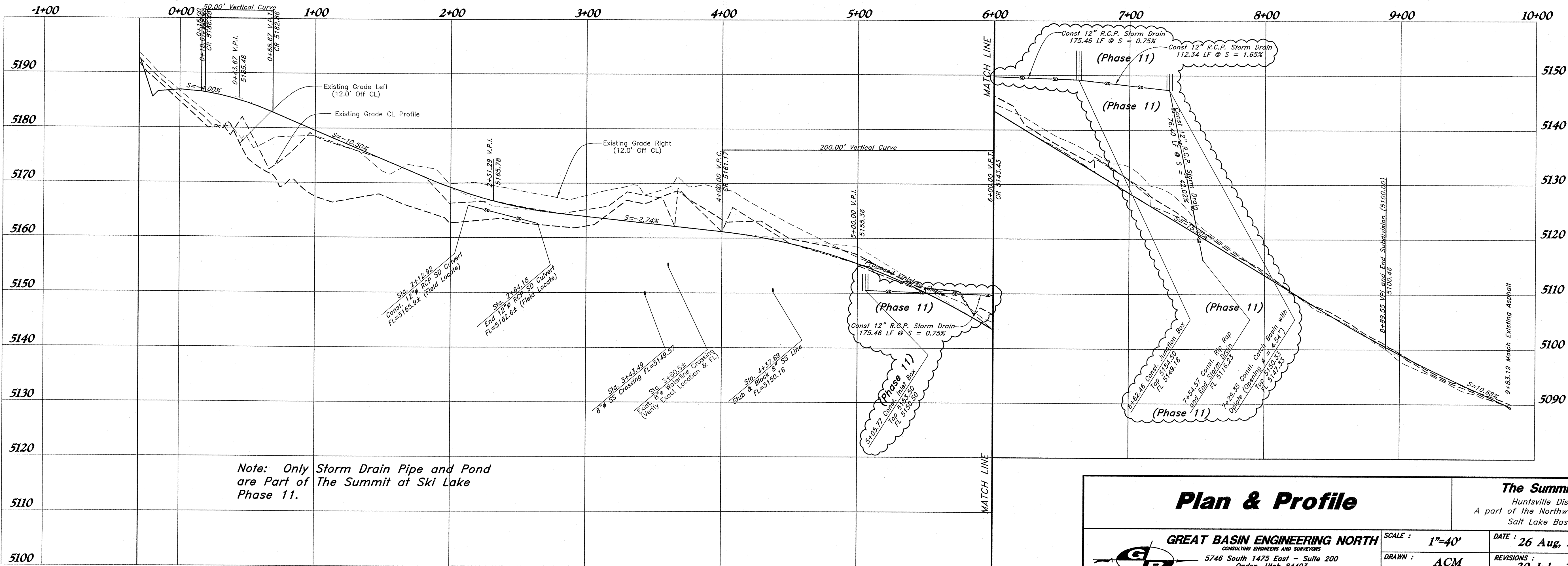
Verify depth and location of all existing utilities prior to constructing any new utility lines. Utility Civil Engineer of any discrepancies or conflicts prior to final connection being made.

5. No vegetation will be planted or weeds to control erosion.

**CAUTION**  
The location and/or elevation of existing utilities as shown on these plans is based on records of the various utility companies and, where possible, measurement taken from the field. The information is not to be relied on as being exact or complete.

**Via Monaco Drive**

60' wide Private Drive



Note: Only Storm Drain Pipe and Pond are Part of The Summit at Ski Lake Phase 11.

<b>Plan &amp; Profile</b>		<b>The Summit @ Ski Lake No. 11</b> Huntsville District, Weber County, Utah A part of the Northwest 1/4 of Section 24, T6N, R1E, Salt Lake Base & Meridian, U.S. Survey	
<p><b>GREAT BASIN ENGINEERING NORTH</b> CONSULTING ENGINEERS AND SURVEYORS 5746 South 1475 East - Suite 200 Ogden, Utah 84403 P.O. Box 150046, Ogden, Utah 84415 Ogden (801)394-6215 Salt Lake City (801)321-0222 Fax: (801)392-7544</p>	SCALE: <b>1"=40'</b>	DATE: <b>26 Aug, 2010</b>	DRWG. NO.
	DRAWN: <b>ACM</b>	REVISIONS: <b>20 July, 2012</b>	<b>2</b>
96N120V9S3			

