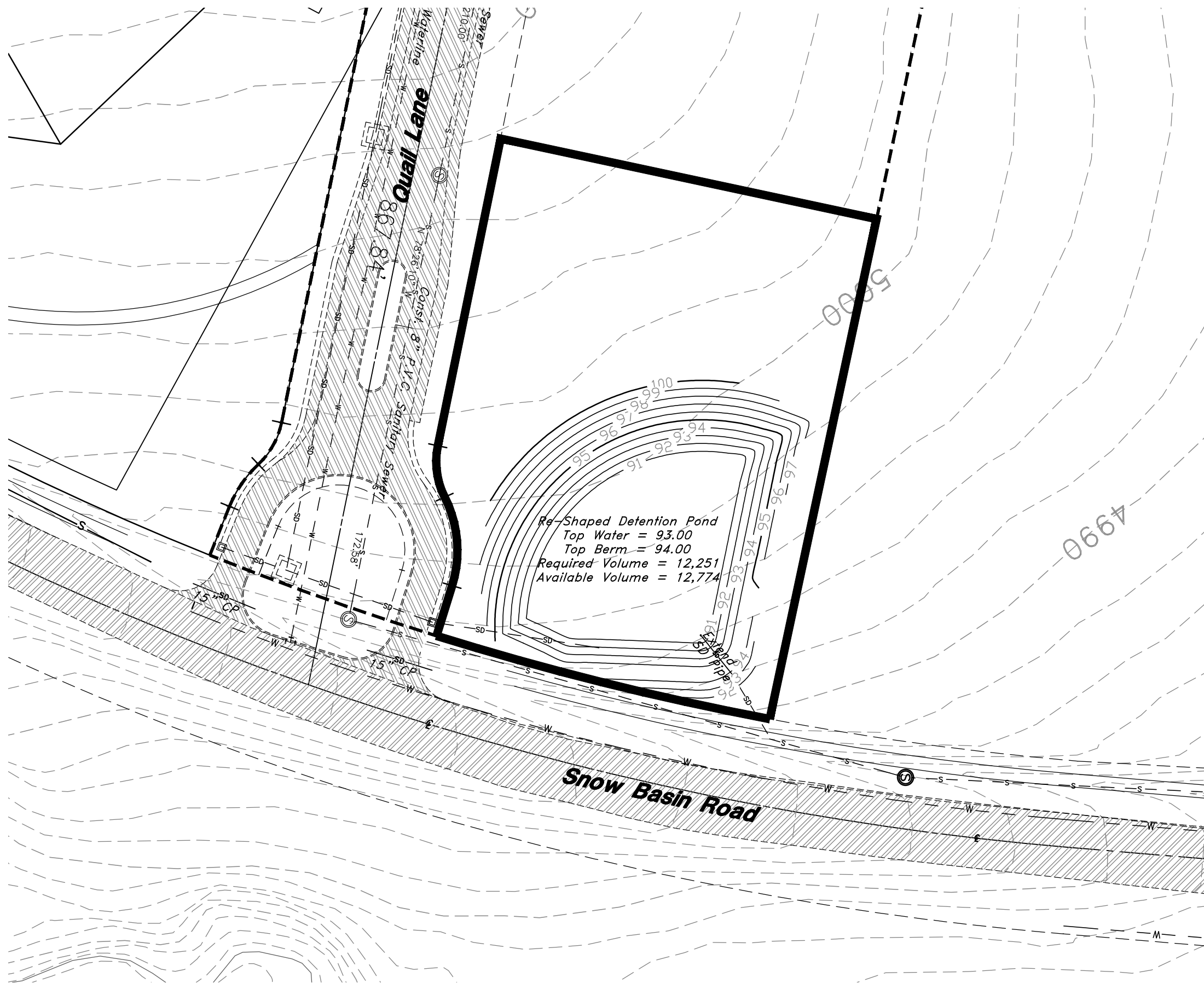
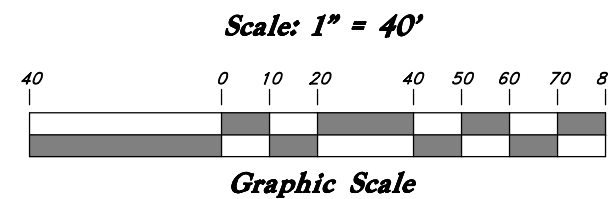
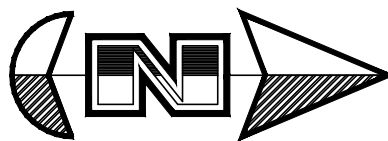


### Future Extension of Quail Lane

Future 60' Wide Right of Way



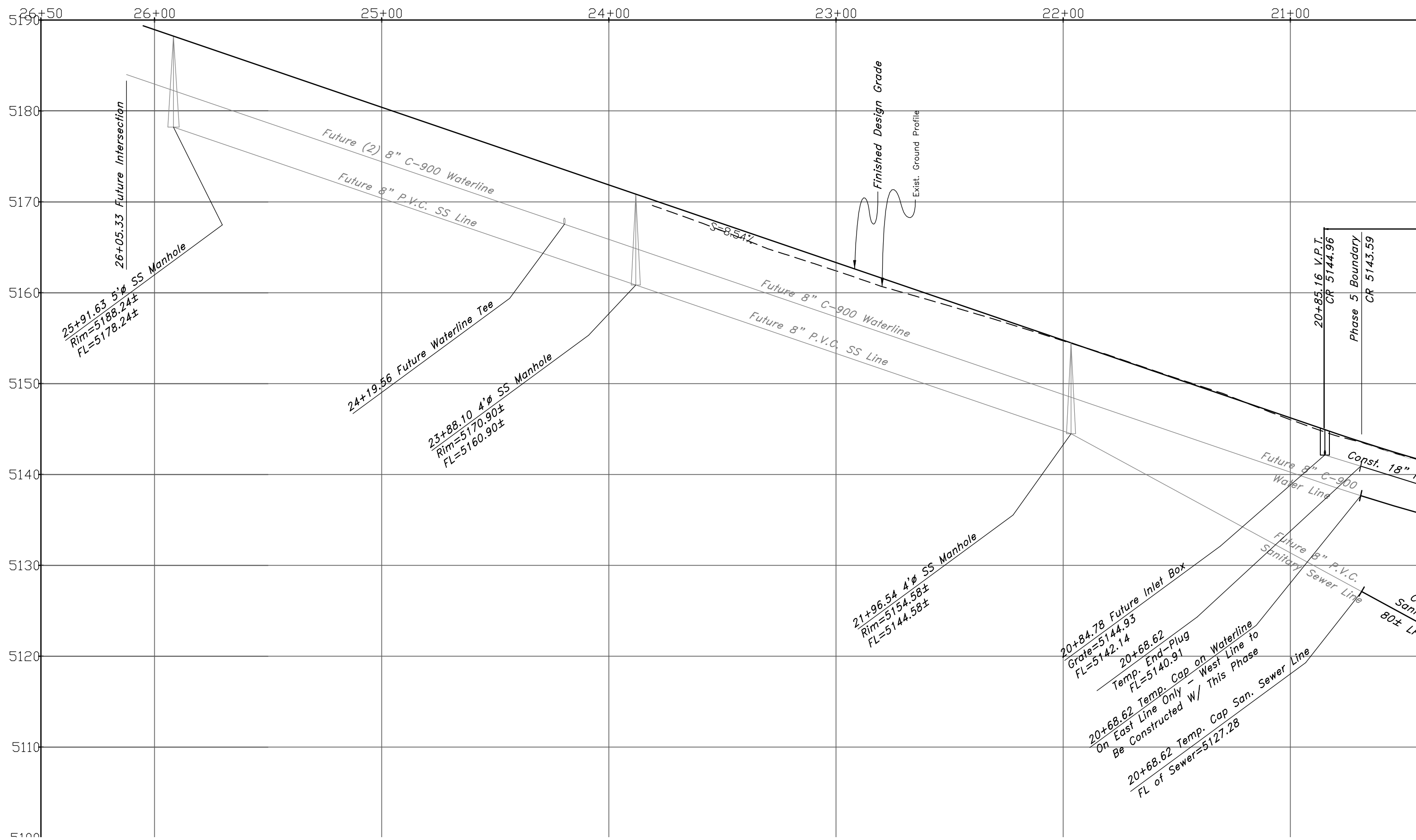
### Detention Pond



### Legend

(Note: All items may not appear on drawing)

- San. Sewer Manhole
- Water Manhole
- Storm Drain Manhole
- Electrical Manhole
- Catch Basins
- Exist. Fire Hydrant
- Exist. Water Valve
- Water Valve
- Sanitary Sewer
- Culinary Water
- Gas Line
- Irrigation Line
- Storm Drain
- Telephone Line
- Secondary Waterline
- Power Line
- Fire Line
- Land Drain
- Power pole w/guy
- Light Pole
- Fence
- Flowline of ditch
- Overhead Power line
- Corrugated Metal Pipe
- Concrete Pipe
- Reinforced Concrete Pipe
- Ductile Iron
- Polyvinyl Chloride
- Top of Asphalt
- Edge of Asphalt
- Centerline
- Flowline
- Finish floor
- Top of Curb
- Top of Wall
- Top of Walk
- Top of Concrete
- Natural Ground
- Finish Contour
- Exist. Contour
- Finish Grade
- Exist. Grade
- Ridge Line
- Direction of Flow
- Existing Asphalt
- New Asphalt
- Heavy Duty Asphalt
- Concrete
- Open Face Curb & Gutter



### Plan and Profile

#### The Chalets at Ski Lake Phase 5

A part of the Southwest 1/4 of Section 13, a part of the Northeast 1/4 of Section 23, and a part of the Northwest 1/4 of Section 24, T6N, R1E, SLB&M, U.S. Survey



**GREAT BASIN ENGINEERING NORTH**

CONSULTING ENGINEERS AND SURVEYORS

5746 South 1475 East, Suite 200

Ogden, Utah 84403

P.O. Box 150048, Ogden, Utah 84415

Ogden (801)394-4515 Salt Lake City (801)521-0222 Fax (801)392-7544

SCALE : 1" = 40'

DRAWN : MRK

96N120 PH 5

DATE : 24 Jun, 2009

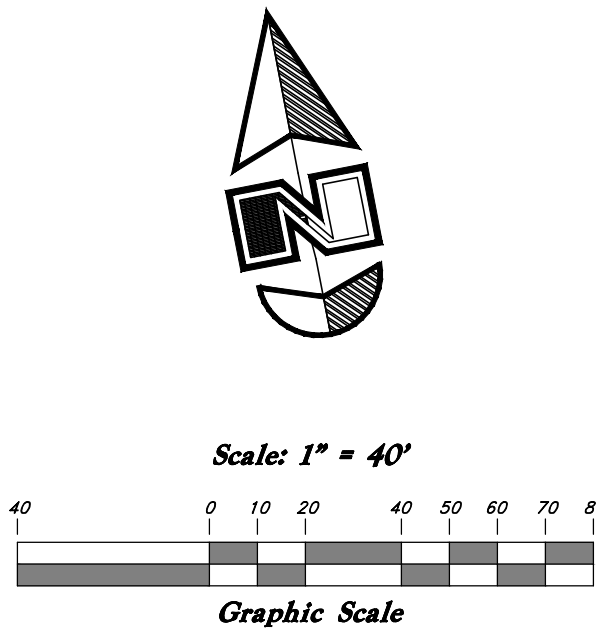
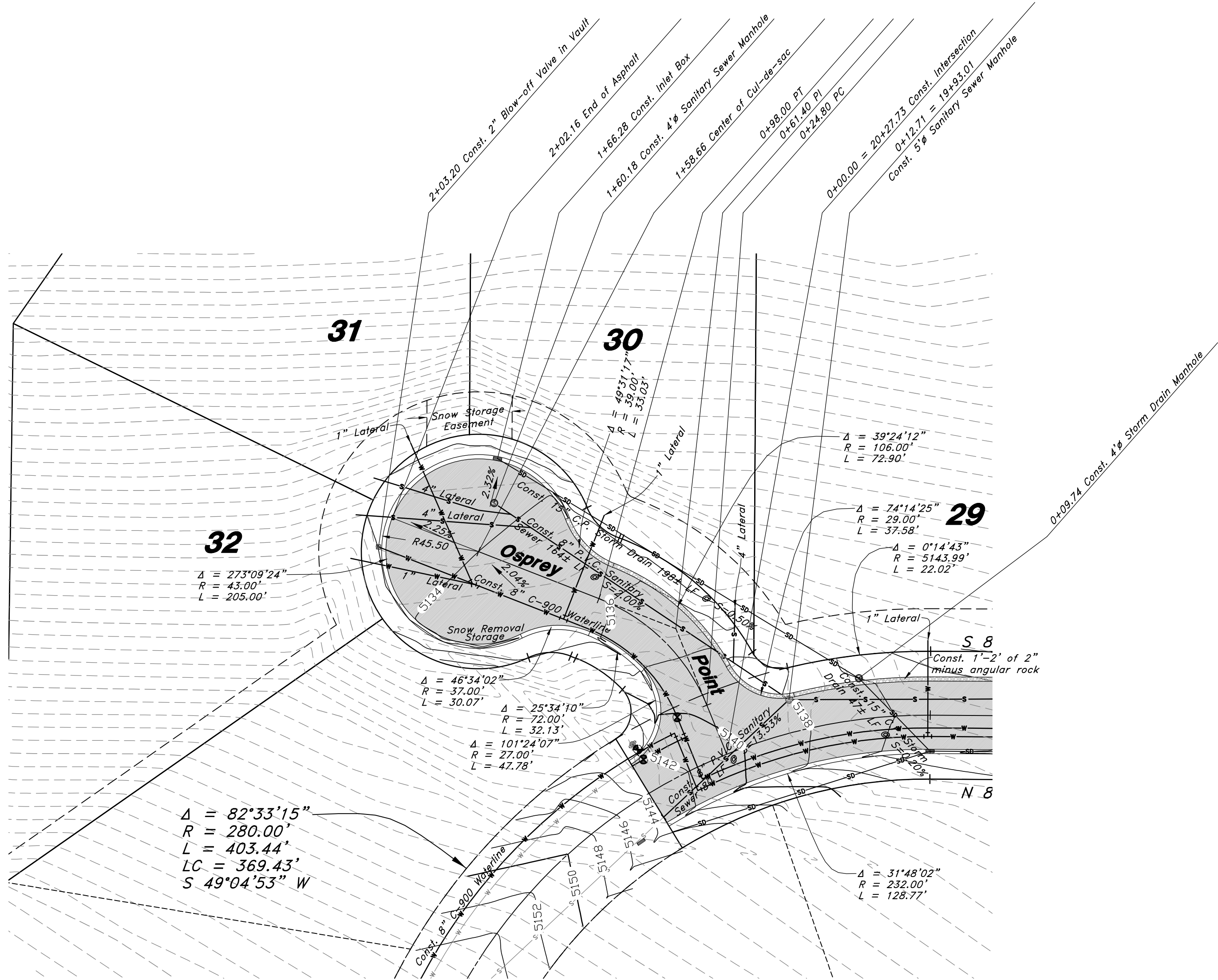
REVISIONS : 2 Nov, 2011

DRWG. NO.

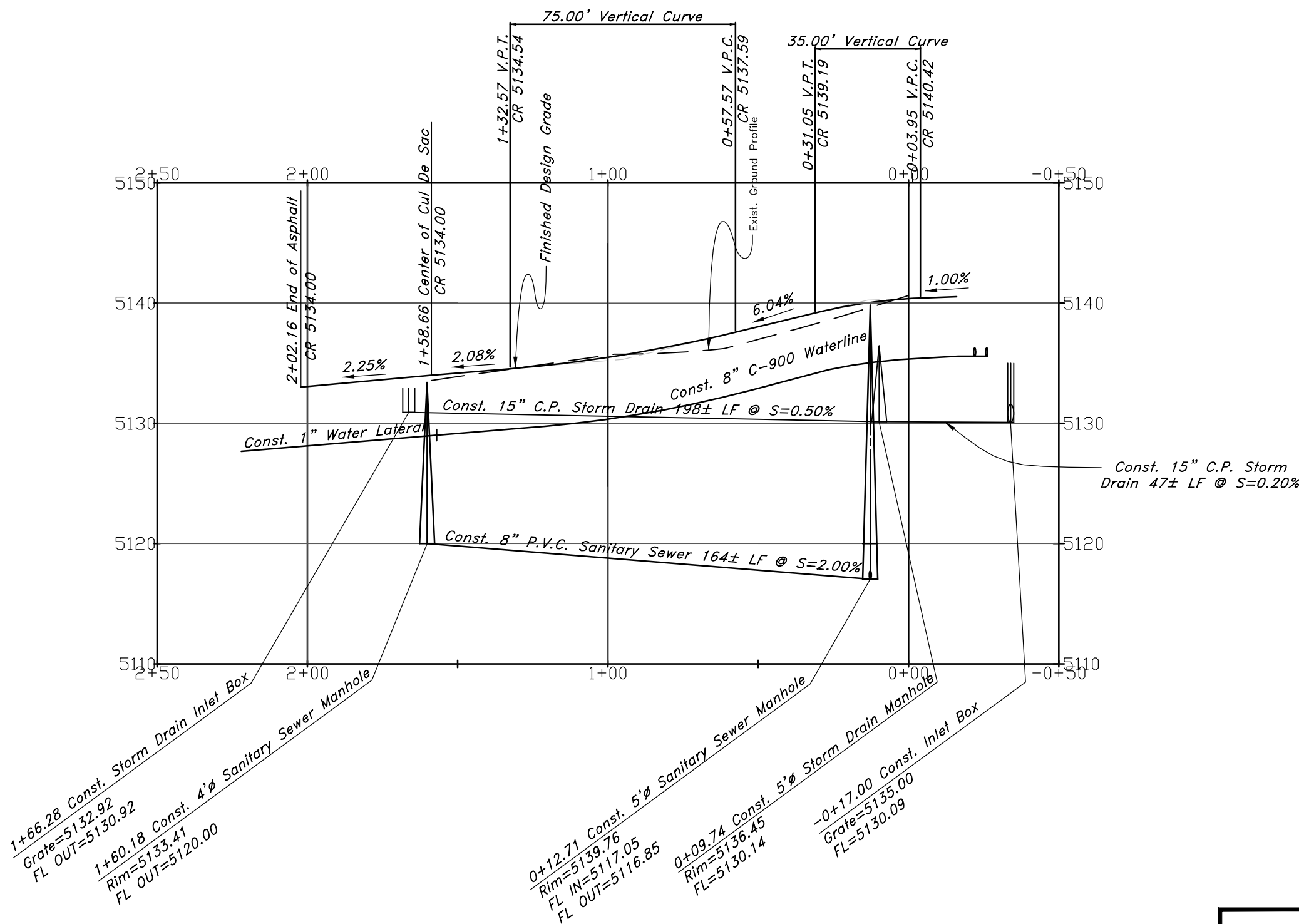
2

of 6





**Osprey Point**  
60' Wide Right of Way & Cul-de-sac



**Legend**

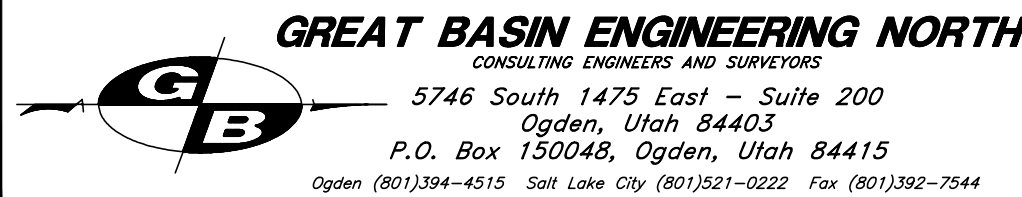
(Note: All items may not appear on drawing)

- San. Sewer Manhole
- Water Manhole
- Storm Drain Manhole
- Electrical Manhole
- Catch Basins
- Exist. Fire Hydrant
- Exist. Water Valve
- Sanitary Sewer
- Culinary Water
- Gas Line
- Irrigation Line
- Storm Drain
- Telephone Line
- Secondary Waterline
- Power Line
- Fire Line
- Land Drain
- Power pole
- Power pole w/guy
- Light Pole
- Fence
- Flowline of ditch
- Overhead Power line
- Corrugated Metal Pipe
- Concrete Pipe
- Reinforced Concrete Pipe
- Ductile Iron
- Polyvinyl Chloride
- Top of Asphalt
- Edge of Asphalt
- Centerline
- Flowline
- Finish floor
- Top of Curb
- Top of Wall
- Top of Walk
- Top of Concrete
- Natural Ground
- Finish Contour
- Exist. Contour
- Exist. Grade
- Exist. Grade
- Ridge Line
- Direction of Flow
- Existing Asphalt
- New Asphalt
- Heavy Duty Asphalt
- Concrete
- Open Face
- Curb & Gutter

**Plan and Profile**

**The Chalets at Ski Lake Phase 5**

A part of the Southwest 1/4 of Section 13, a part of the Northeast 1/4 of Section 23, and a part of the Northwest 1/4 of Section 24, T6N, R1E, SLB&M, U.S. Survey



**GREAT BASIN ENGINEERING NORTH**  
CONSULTING ENGINEERS AND SURVEYORS  
5746 South 1475 East, Suite 200  
Ogden, Utah 84403  
P.O. Box 150048, Ogden, Utah 84415  
Ogden (801)394-4515 Salt Lake City (801)521-0222 Fax (801)392-7544

SCALE : **1" = 40'**

DATE : **24 Jun, 2009**

DRWG. NO.

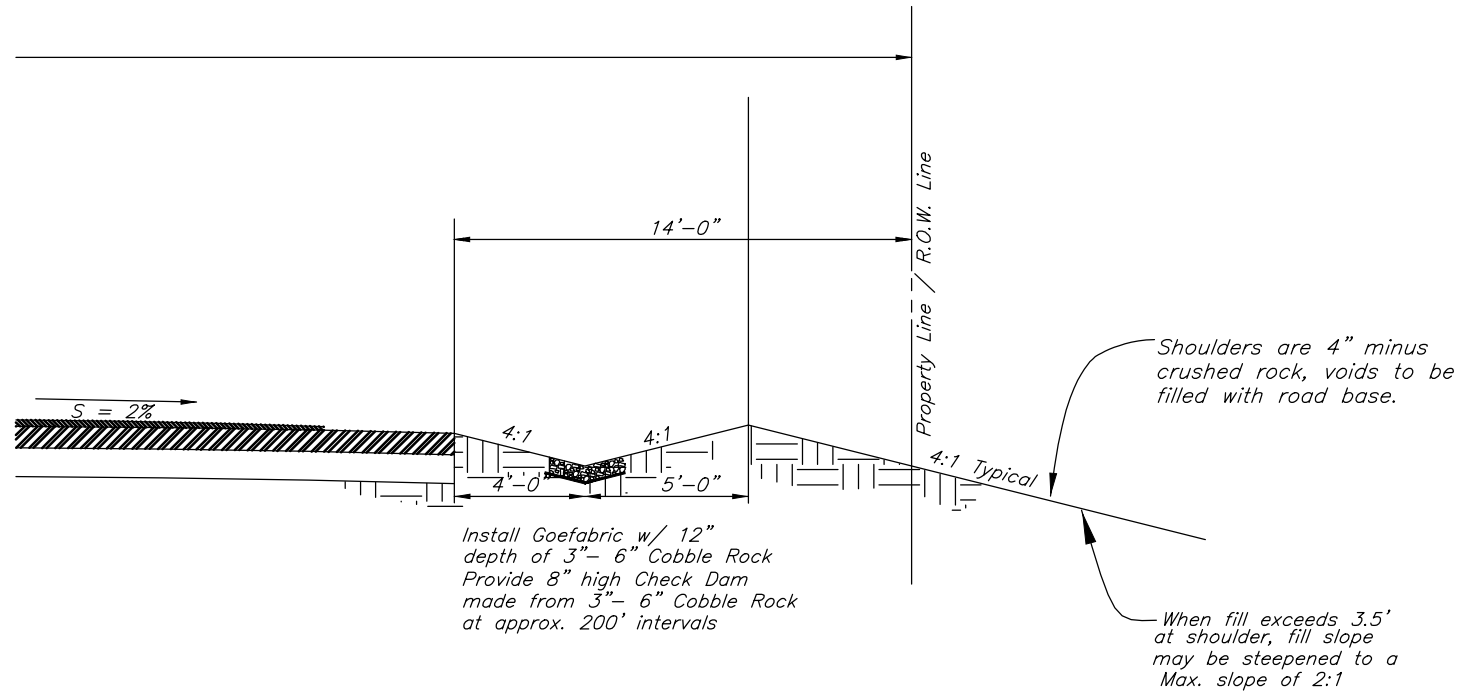
DRAWN : **MRK**

REVISIONS : **2 Nov, 2011**

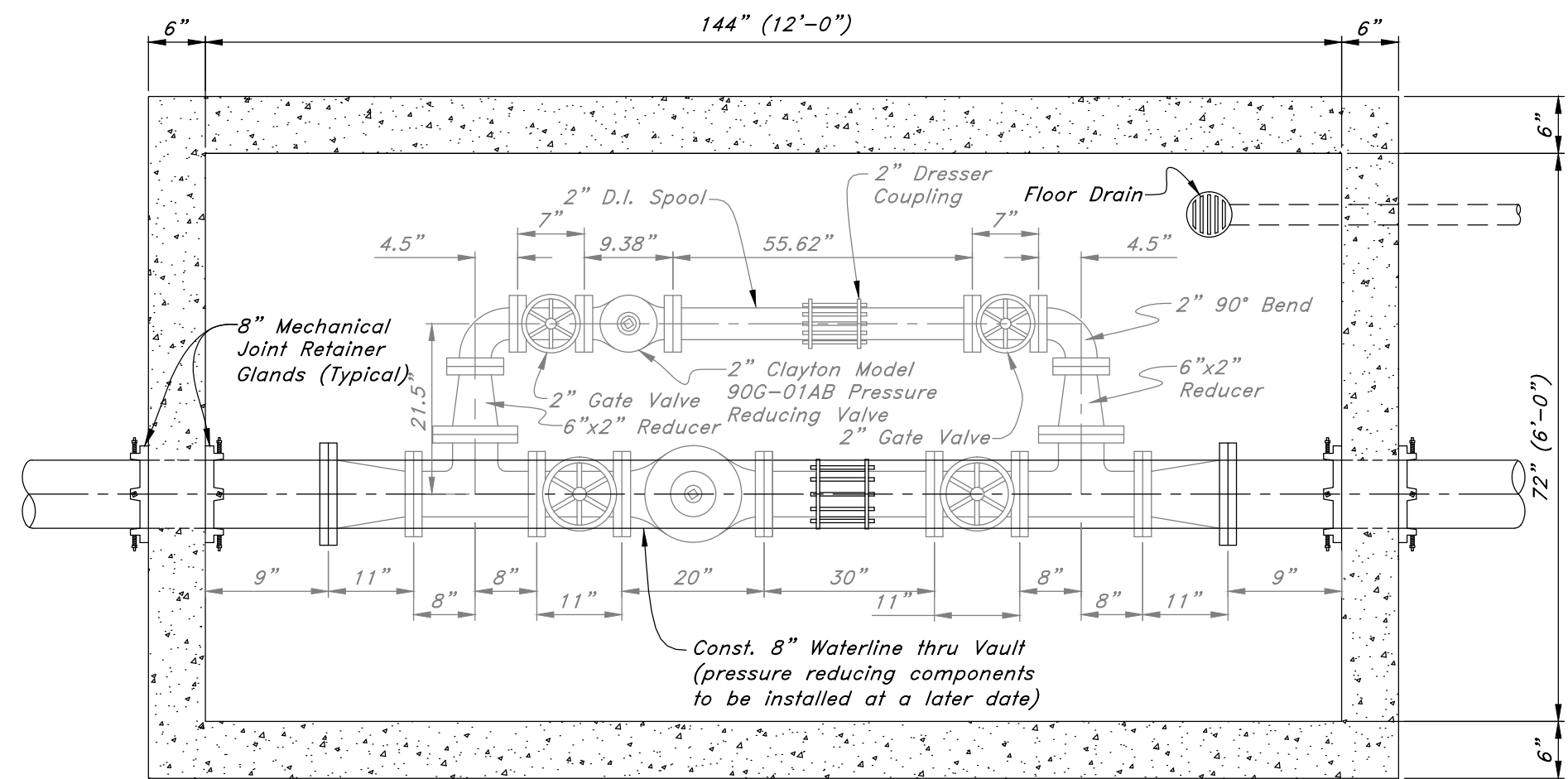
**96N120 PH 5**

**3**

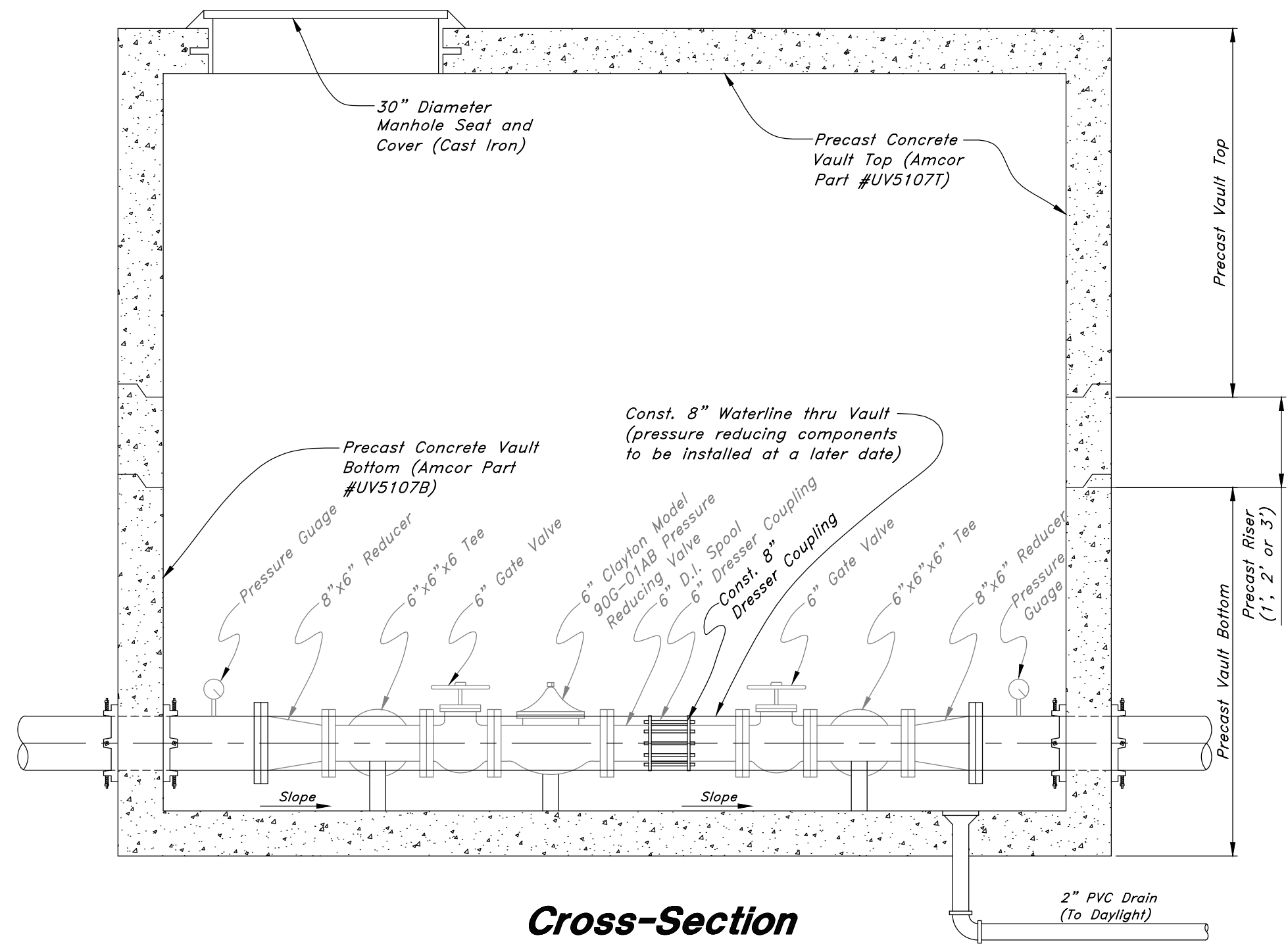
of 6



**Drainage Swale**



**Top View**



**Cross-Section  
Pressure Reducing Station**

**Construction Details**

**The Chalets at Ski Lake Phase 5**

A part of the Southwest 1/4 of Section 13, a part of the Northeast 1/4 of Section 23, and a part of the Northwest 1/4 of Section 24, T6N, R1E, SLB&M, U.S. Survey

**GREAT BASIN ENGINEERING NORTH**  
CONSULTING ENGINEERS AND SURVEYORS  
5746 South 1475 East - Suite 200  
Ogden, Utah 84403  
P.O. Box 150048, Ogden, Utah 84415  
Ogden (801)394-4515 Salt Lake City (801)521-0222 Fax (801)392-7544

SCALE : **NTS**  
DRAWN : **MRK**  
**96N120 PH 5**

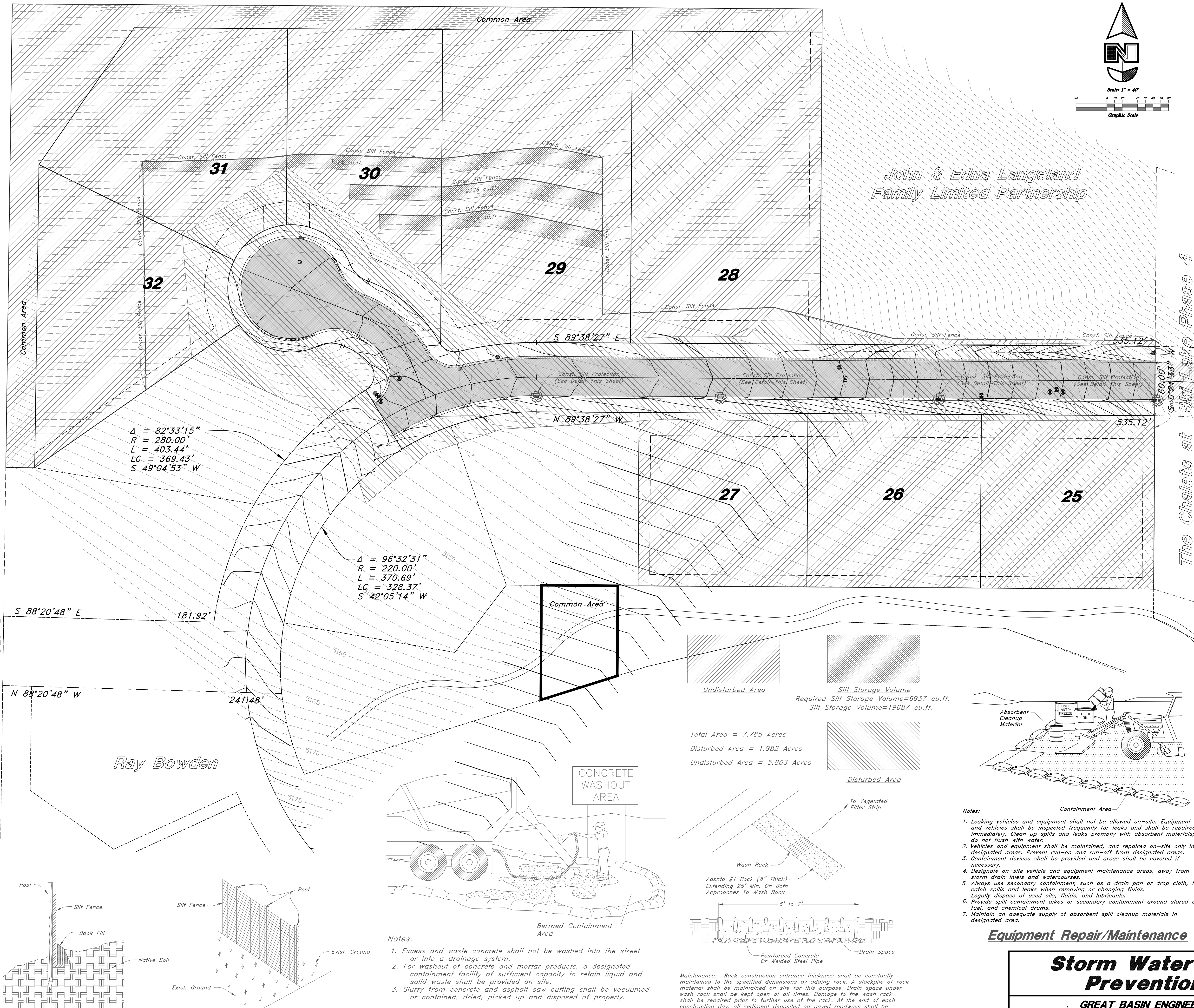
DATE : **24 Jun, 2009**  
REVISIONS :

DRWG. NO.

**4**

of 6







STORMWATER POLLUTION PREVENTION PLAN  
THE CHALETS AT SKI LAKE Phase 5, A CLUSTER SUBDIVISION  
WEBER COUNTY, UTAH

STORM WATER POLLUTION PREVENTION PLAN SPECIFIC NOTES

1. THIS STORM WATER POLLUTION PREVENTION PLAN (SWPPP) WAS DEVELOPED AT THE REQUEST OF THE OWNER, RONALD J. CATANZARO, FOR THE CONSTRUCTION OF A NEW RESIDENTIAL SUBDIVISION IN THE OGDEN VALLEY, COUNTY OF WEBER, STATE OF UTAH. THIS PLAN IDENTIFIES POTENTIAL SOURCES OF POLLUTANTS OF STORM WATER, PRESENTS POLLUTION CONTROL MEASURES, AND ASSISTS IN INSURING IMPLEMENTATION AND MAINTENANCE OF THE BEST MANAGEMENT PRACTICES (BMP'S) INDICATED HEREIN.
2. A NOTICE OF INTENT HAS BEEN FILED WITH THE STATE OF UTAH DEQ WATER QUALITY DIVISION BY THE OWNER SO THAT THIS CONSTRUCTION PROJECT MAY BE COVERED UNDER THE STATE GENERAL PERMIT. THE PERMIT IS NATIONAL POLLUTION DISCHARGE ELIMINATION SYSTEM (NPDES) GENERAL PERMIT (NO. UTR 100000) FOR STORM WATER DISCHARGES ASSOCIATED WITH CONSTRUCTION ACTIVITY.
3. IN THE EVENT OF A CHANGE IN OWNERSHIP, A NEW NOTICE OF INTENT SHALL BE FILED WITH THE UTAH DEQ WATER QUALITY DIVISION.
4. IN THE EVENT OF A RELEASE OF A REPORTABLE QUANTITY OF A POLLUTANT, THE CONTRACTOR SHALL ADVISE THE OWNER TO NOTIFY THE NATIONAL RESPONSE CENTER, WEBER COUNTY AND GREAT BASIN ENGINEERING NORTH. IF NECESSARY, THIS POLLUTION PREVENTION PLAN SHOULD BE REVISED TO BY THE CONTRACTOR TO REFLECT THE CHANGES IN CONDITIONS OF THE CONSTRUCTION ACTIVITY. A REPORTABLE QUANTITY IS ESTABLISHED BY 40 CODE OF FEDERAL REGULATIONS (CFR) 117.3 OR 40 CFR 302.4.
5. ALL CONTRACTORS AND THEIR PERSONNEL WHOSE WORK CAN CONTRIBUTE TO OR CAUSE POLLUTION OF STORM WATER SHOULD BE MADE FAMILIAR WITH THIS POLLUTION PREVENTION PLAN. ADEQUATE TRAINING PROVIDED BY THE PERMITEE FOR IMPLEMENTATION OF THE MEASURES PRESENTED HEREIN SHALL BE PROVIDED TO THE CONTRACTORS AND THEIR PERSONNEL.
6. CHANGES IN CONSTRUCTION OR IN CONDITIONS WHICH ARE NOT COVERED BY THIS PLAN SHOULD BE BROUGHT TO THE ATTENTION OF THE OWNER AND GREAT BASIN ENGINEERING NORTH. THIS POLLUTION PREVENTION PLAN WILL BE REVISED BY THE CONTRACTOR TO REFLECT THE CHANGE IN CONSTRUCTION OR IN CONDITIONS.
7. ALL PREVENTION AND CLEAN UP MEASURES SHOULD BE CONDUCTED IN ACCORDANCE WITH WEBER COUNTY ORDINANCES, AS WELL AS STATE AND FEDERAL REGULATIONS. WASTE MATERIALS SHOULD BE DISPOSED OF IN A LEGAL MANNER. ALL DISCHARGERS OF STORM WATER MUST COMPLY WITH THE LAWFUL REQUIREMENTS OF WEBER COUNTY AND OTHER LOCAL AGENCIES REGARDING THE DISCHARGES OF STORM WATER TO STORM DRAINS.
8. THIS PLAN DOES NOT COVER THE REMOVAL OF HAZARDOUS OR TOXIC WASTE. IN THE EVENT OF A DISCHARGE OR RELEASE OF A REPORTABLE QUANTITY OF TOXIC WASTE, WORK SHOULD BE STOPPED UNTIL THE SPILL CAN BE ASSESSED AND A MITIGATION REPORT PREPARED BY A QUALIFIED ENVIRONMENTAL CONSULTANT, AND IF NECESSARY, REVIEWED BY WEBER COUNTY AND ANY OTHER AGENCY HAVING JURISDICTION.
9. THIS SWPPP SHALL BE MADE AVAILABLE TO THE PUBLIC UNDER SECTION 308(B) OF THE CLEAN WATER ACT. UPON REQUEST BY MEMBERS OF THE PUBLIC, THE DISCHARGER SHALL MAKE AVAILABLE FOR REVIEW A COPY OF THIS SWPPP EITHER TO THE D.E.Q. OR DIRECTLY TO THE REQUESTER. THIS SWPPP MUST BE KEPT ON SITE DURING CONSTRUCTION ACTIVITY AND MADE AVAILABLE UPON REQUEST OF A REPRESENTATIVE OF THE UTAH DEQ WATER QUALITY DIVISION/OR THE LOCAL AGENCY.
10. CONTACTS
- |  |  |
|--|--|
| OWNER<br>VALLEY ENTERPRISE INVESTMENT COMPANY<br>5393 EAST 6850 NORTH<br>EDEN, UTAH 84310  | RAY BOWDEN<br>OWNER/DEVELOPER<br>(801) 725-1517          |
| CIVIL ENGINEER<br>GREAT BASIN ENGINEERING NORTH<br>5746 SOUTH 1475 EAST, SUITE 200<br>OGDEN, UTAH 84403  | MARK E. BABBIT, P.E.<br>VICE PRESIDENT<br>(801) 394-4515 |
| WEBER COUNTY<br>ENGINEERING DEPARTMENT<br>2380 WASHINGTON BOULEVARD<br>OGDEN, UTAH 84404   | GEORGE BINFORD<br>ENGINEERING<br>(801) 399-8374          |
| STATE OF UTAH<br>DEPARTMENT OF ENVIRONMENTAL QUALITY<br>DIVISION OF WATER QUALITY<br>288 NORTH 1460 WEST<br>P.O. BOX 144870<br>SALT LAKE CITY, UTAH 84114-4870 | TOM RUSHING<br>ENVIRONMENTAL SCIENTIST<br>(801) 538-6951 |
| U.S. EPA<br>ENVIRONMENTAL PROTECTION AGENCY<br>DENVER, COLORADO  | REGION VIII<br>800-759-4372                              |
| ENVIRONMENTAL PROTECTION AGENCY<br>WASHINGTON, D.C. 20460  | 202-475-9518   |
11. REFERENCES
- A. PLAN / PROFILE PLAN PER GREAT BASIN ENGINEERING NORTH DATED JUNE 24, 2009.
- B. STORM WATER POLLUTION PREVENTION PLAN PREPARED BY GREAT BASIN ENGINEERING NORTH, DATED JUNE 24, 2009.
12. THE PROPOSED CONSTRUCTION ACTIVITY IS CONSTRUCTION OF A NEW RESIDENTIAL SUBDIVISION.
13. LOCATION OF THE SITE: THE PROJECT IS LOCATED AT APPROXIMATELY THE INTERSECTION OF MEADOW LARK LANE AND QUAIL LANE IN THE OGDEN VALLEY, WEBER COUNTY, UTAH. A PART OF THE SOUTHWEST QUARTER OF SECTION 23, T6N, R1E, SLB&M. GPS COORDINATES: LATITUDE-41°14'57" N, LONGITUDE-111°42'51" W.
14. A MINIMAL AMOUNT OF WATER FLOWS ONTO THE SITE. A PUBLIC STORM DRAIN SYSTEM COLLECTS ALL THE WATER VIA PIPE WHICH CONTINUES EAST IN A DETENTION POND LOCATED IN THE CHALETS AT SKI LAKE PHASE 1.
15. A. THE EXISTING SITE CONSISTS OF SAGE BRUSH, WILD GRASSES AND BUSHES. EXISTING DRAINAGE TO THE EAST AND TO THE NORTH TO EXISTING STORM COLLECTION SYSTEM. PRE-CONSTRUCTION RUNOFF COEFFICIENT = 0.15
- B. THE PROPOSED SITE WILL CONSIST OF ROADS, CURB & GUTTER, HOUSES & LANDSCAPE AREAS WITH THE MATURE GRASS, PLANTED GRASS, TREES AND SHRUBS WILL BE COLLECTED IN GUTTERS, DRAINAGES AND STORM DRAIN PIPES, WHICH FLOWS TO THE EAST INTO AN EXISTING STORM DRAIN POND. POST-CONSTRUCTION RUNOFF COEFFICIENT = 0.40
16. SEE IMPROVEMENT PLANS FOR SITE DRAINAGE

START DATE \_\_\_\_\_  
FINISH DATE \_\_\_\_\_

STORM WATER POLLUTION PREVENTION PLAN GENERAL NOTES

- A. PROHIBITION ON MOST NON-STORM WATER DISCHARGES
- ONLY STORM WATER FROM THE PROJECT SITE SHALL BE ALLOWED TO FLOW INTO THE ON-SITE STORM DRAIN SYSTEM. CLEAN, NON-CHLORINATED WATER FROM THE FLUSHING OF FIRE HYDRANTS, WATER MAINS, AND STORM DRAINS MAY BE DISCHARGED TO THE STORM DRAIN IF IT IS NOT ALLOWED TO COLLECT DIRT, DEBRIS, AND TRASH WHILE FLOWING TO A STORM DRAIN INLET.
- B. SOURCES OF STORM WATER POLLUTANTS
- STORM WATER POLLUTANTS INCLUDE SOIL SEDIMENT AND NUTRIENTS; OIL, GREASE, TOXIC POLLUTANTS, AND HEAVY METALS. SOURCES OF STORM WATER POLLUTANTS INCLUDE BUT ARE NOT LIMITED TO SOIL EROSION BY WATER AND/OR WIND; CLEARING OF VEGETATION; GRADING; VEHICLE AND EQUIPMENT REFUELING AND MAINTENANCE; WASHING OF CONCRETE TRUCKS, MIXERS AND HANDLING EQUIPMENT; PAINTS, SOLVENTS AND ADHESIVES; AND LANDSCAPING WORK.
- C. EROSION AND SEDIMENT CONTROLS
1. COVER EXPOSED STOCKPILES OF SOILS, CONSTRUCTION AND LANDSCAPING MATERIALS WITH HEAVY PLASTIC SHEETING.
2. IN LANDSCAPING AREAS WHERE THE VEGETATION HAS NOT ESTABLISHED GROWTH AND TAKEN HOLD, CONSTRUCT SANDBAG OR DIRT BERMS AROUND THEIR PERIMETER TO INSURE THAT WATER WILL BE CONTAINED INSIDE THE LANDSCAPING AREA AND THAT IT WILL NOT BE CONVEYED TO A STORM DRAIN INLET.
3. RE-VEGETATE AREAS WHERE LANDSCAPING HAS DIED OR NOT TAKEN HOLD.
4. DIVERT STORM WATER RUNOFF AROUND DISTURBED SOILS WITH BERMS OR DIRT SWALES.
- D. OTHER CONTROLS
1. WASTE DISPOSAL
- A. KEEP WASTE DISPOSAL CONTAINERS COVERED.
- B. PROVIDE FOR THE WEEKLY (OR MORE FREQUENT, IF NECESSARY) DISPOSAL OF WASTE CONTAINERS.
- C. PROVIDE CONTAINERS AT CONVENIENT LOCATIONS AROUND THE SITE.
2. SWEEPING OF SITE
- A. PROVIDE DAILY SWEEPING BY HAND OR MECHANICAL MEANS (IF NEEDED) TO KEEP THE PAVED AREAS OF THE SITE FREE OF DUST, DIRT, AND DEBRIS.
- B. DISPOSE OF ACCUMULATED DIRT IN WASTE CONTAINERS, OR HAUL IT OFF THE SITE TO A LANDFILL.
3. SANITARY/SEPTIC DISPOSAL
- PORTABLE TOILETS AND OTHER SANITARY FACILITIES SHALL BE SERVICED WEEKLY AND PUMPED CLEAN BY A WASTE DISPOSAL COMPANY. NO TOXIC OR HAZARDOUS WASTE SHALL BE DISPOSED IN A PORTABLE TOILET OR IN THE ON-SITE SANITARY SEWER.
4. SPILLS
- A. STORE ADEQUATE ABSORBENT MATERIALS, RAGS, BROOMS, SHOVELS, AND WASTE CONTAINERS ON THE SITE TO CLEAN-UP SPILLS OF MATERIALS SUCH AS FUEL, PAINT, SOLVENTS, OR CLEANERS. CLEAN UP MINOR SPILLS IMMEDIATELY.
- B. FOR REPORTABLE QUANTITY OF HAZARDOUS OR TOXIC SUBSTANCE, SECURE THE SERVICES OF QUALIFIED PERSONNEL OR CLEAN-UP AND DISPOSAL.
5. VEHICLES AND EQUIPMENT
- A. FIX LEAKS OF FUEL, OIL AND OTHER SUBSTANCES IMMEDIATELY.
- B. PERFORM REFUELING AND SERVICE OF VEHICLES OR EQUIPMENT OFF-SITE WHEN POSSIBLE. IF REFUELING OR SERVICE OF EQUIPMENT IS PERFORMED ON-SITE, THEN PROVIDE AN IMPERVIOUS, CONTAINED AREA WHERE ANY SPILLS CAN BE CONTAINED WITHOUT FLOWING TO A STORM WATER INLET OR INTO THE GROUND.
- C. USE DRIP PANS TO CATCH LEAKS AND SMALL SPILLS.
6. CONCRETE TRUCKS, MIXERS AND HANDLING EQUIPMENT
- A. DO NOT DISPOSE OF WASHOUT FROM THE WASHING OF CONCRETE TRUCKS, MIXERS, AND HANDLING EQUIPMENT WHERE IT WILL FLOW INTO A STORM WATER INLET OR INTO A PUBLIC STREET.
- B. PROVIDE A HOLDING TANK TO RECEIVE ANY WASHOUT FROM CONCRETE EQUIPMENT. DISPOSAL OF TANK CONTENTS SHOULD BE CONDUCTED BY A WASTE HANDLING FIRM.
- C. PROVIDE A DESIGNATED AREA FOR WASHING ANY VEHICLES OR EQUIPMENT. DRAINAGE FROM THIS AREA SHOULD FLOW TO THE HOLDING TANK.
7. LANDSCAPING OPERATIONS
- A. USE ONLY THE MINIMUM AMOUNT OF LANDSCAPING FERTILIZES, NUTRIENTS, AND OTHER CHEMICALS THAT ARE NEEDED.
- B. DO NOT OVER WATER FERTILIZED OR TREATED LANDSCAPE AREAS. MINIMIZE RUNOFF OF IRRIGATION WATER FROM LANDSCAPING.
8. STORM WATER INLETS
- KEEP ALL ON-SITE STORM WATER INLETS CLEAN AND FREE OF DIRT AND DEBRIS. IN THE EVENT THAT SEDIMENT AND DEBRIS MAY FLOW TO AN INLET, PROVIDE AN 18-INCH (MINIMUM) STRAIN BARRIER AROUND THE INLET TO TRAP THE DIRT AND DEBRIS AND ALLOW ONLY CLEAN STORM WATER TO ENTER THE INLET.

E. INSPECTION

1. REGULAR WEEKLY INTERVAL INSPECTION AND INSPECTION BEFORE AND AFTER STORMS
- A. VISUALLY INSPECT THE SITE WEEKLY TO INSURE THAT STORM WATER INLETS ARE FREE OF DIRT AND DEBRIS.
- B. BEFORE A STORM, INSPECT THE SITE TO INSURE THAT STORM WATER POLLUTION CONTROL MEASURES ARE IN PLACE.
- C. AFTER A STORM, INSPECT ALL STORM WATER INLETS TO INSURE THAT THEY ARE CLEAR OF DIRT AND DEBRIS. CLEAN THOSE STORM WATER INLETS THAT ARE NOT CLEAR AND FREE OF DEBRIS.
- D. THE UTAH DEQ WATER QUALITY DIVISION MAY REQUIRE THE DISCHARGER TO CONDUCT ADDITIONAL SITE INSPECTIONS, SUBMIT REPORTS AND CERTIFICATIONS, OR TO PERFORM SAMPLING AND ANALYSIS.
- E. THE CONTRACTOR SHALL KEEP AN INSPECTION REPORT LOG SHOWING CHANGES TO TEH SWPPP & MIN. OF NOTES OF WEEKLY & SPECIAL INSPECTIONS, DEFICIENCIES OR DAMAGES TO BMP'S & WHEN SAID DEFICIENCIES OR DAMAGES WERE FIXED OR UPGRADED.
2. ALL DISCHARGERS ARE REQUIRED TO CONDUCT INSPECTIONS OF THE CONSTRUCTION SITE PRIOR TO ANTICIPATED STORM EVENTS AND AFTER ACTUAL STORM EVENTS, TO IDENTIFY AREAS CONTRIBUTING TO A STORM WATER DISCHARGE, TO EVALUATE WHETHER MEASURES TO REDUCE POLLUTANT LOADINGS IDENTIFIED IN THIS SWPPP ARE ADEQUATE, TO PROPERLY IMPLEMENT IN ACCORDANCE WITH THE TERMS OF THE GENERAL PERMIT, AND TO DETERMINE WHETHER ADDITIONAL CONTROL PRACTICES ARE NEEDED.
3. PREPARATION OF REPORTS AND RETENTION OF RECORDS
- A. EACH DISCHARGER MUST CERTIFY ANNUALLY THAT ITS CONSTRUCTION ACTIVITY IS IN COMPLIANCE WITH THE REQUIREMENTS OF THE GENERAL PERMIT AND THIS SWPPP. THIS CERTIFICATION MUST BE BASED ON THE SITE INSPECTIONS. THE FIRST CERTIFICATION MUST BE COMPLETED BY JULY 1, 2002, AND EACH JULY 1 THEREAFTER.
- B. THE DISCHARGER IS REQUIRED TO RETAIN RECORDS OF ALL MONITORING INFORMATION, COPIES OF ALL REPORTS REQUIRED BY THIS GENERAL PERMIT, AND RECORDS OF ALL DATA USED TO COMPLETE THE NOTICE OF INTENT FOR CONSTRUCTION ACTIVITY FOR A PERIOD OF AT LEAST THREE YEARS. THIS PERIOD MAY BE EXTENDED BY REQUEST OF THE STATE. WITH THE EXCEPTION OF NONCOMPLIANCE REPORTING, DISCHARGERS ARE NOT REQUIRED TO SUBMIT THE RECORDS EXCEPT UPON SPECIFIC REQUEST BY THE STATE DEQ DIVISION OF WATER QUALITY.
- C. DISCHARGERS WHO CANNOT CERTIFY COMPLIANCE MUST NOTIFY THE STATE DEQ DIVISION OF WATER QUALITY. THIS NOTIFICATION SHALL IDENTIFY THE TYPE OR TYPES OF NONCOMPLIANCE, DESCRIBE THE ACTIONS NECESSARY TO ACHIEVE COMPLIANCE, AND INCLUDE A TIME SCHEDULE, SUBJECT TO THE MODIFICATIONS BY THE STATE DEQ DIVISION OF WATER QUALITY, INDICATING WHEN COMPLIANCE WILL BE ACHIEVED. NONCOMPLIANCE REPORTS MUST BE SUBMITTED WITHIN 30 DAYS OF THE IDENTIFICATION OF THE NONCOMPLIANCE.
- F. MAINTENANCE OF CONTROLS
1. MAINTENANCE AND REPAIR
- ALL CONTROLS AND MEASURES INDICATED ON THIS PLAN SHOULD BE MAINTAINED IN GOOD AND EFFECTIVE CONDITION. IF ANY CONTROLS OR MEASURES ARE DAMAGED OR REMOVED, THEY SHOULD BE PROMPTLY REPAIRED OR RESTORED.
2. PLAN REVISIONS
- IF CONSTRUCTION ACTIVITY OR CONDITIONS CHANGE FROM THOSE SHOWN IN THIS PLAN, THEN THIS PLAN SHALL BE REVISED TO REFLECT THE CURRENT CONDITIONS.
- G. STABILIZATION PRACTICES
1. STABILIZATION PRACTICES MAY INCLUDE: TEMPORARY SEEDING, PERMANENT SEEDING, MULCHING, GEOTEXTILES, SOD STABILIZATION, VEGETATIVE BUFFER STRIPS, PROTECTION OF TREES, PRESERVATION OF MAINTENANCE MEASURES. STABILIZATION MEASURES SHALL BE INITIATED AS SOON AS PRACTICABLE IN PORTIONS OF THE SITE WHERE CONSTRUCTION ACTIVITIES HAVE TEMPORARILY OR PERMANENTLY CEASED, BUT IN NO CASE MORE THAN 14 DAYS AFTER THE CONSTRUCTION ACTIVITY IN THAT PORTION OF THE SITE HAS TEMPORARILY OR PERMANENTLY CEASED EXCEPT AS NOTED BELOW.
- WHERE THE INITIATION OF STABILIZED MEASURES BY THE 14TH DAY AFTER CONSTRUCTION ACTIVITY TEMPORARILY OR PERMANENTLY CEASED IS PRECLUDED BY SNOW COVER OR FROZEN GROUND CONDITIONS MEASURES SHALL BE INITIATED AS SOON AS PRACTICABLE WHERE CONSTRUCTION ACTIVITY ON A PORTION OF THE SITE IS TEMPORARILY CEASED, AND EARTH DISTURBING ACTIVITIES WILL BE RESUMED WITHIN 21 DAYS, TEMPORARY STABILIZATION MEASURES DO NOT HAVE TO BE INITIATED ON THAT PORTION OF THE SITE.
- H. FINAL STABILIZATION AND POST-CONSTRUCTION CONTROLS
1. AFTER CONSTRUCTION HAS BEEN COMPLETED, THE SITE SHALL BE SWEEP CLEAN, STORM WATER INLETS (GRATES AND BASINS) SHALL BE CLEANED, AND ALL WASTE AND LEFTOVER MATERIALS SHALL BE REMOVED FROM THE SITE.
2. ALL LANDSCAPING AND PLANTING AREAS SHOULD BE WELL MAINTAINED TO PREVENT EROSION. AVOID OVER WATERING OF LANDSCAPING.
3. ALL PAVED AREAS SHOULD BE SWEEPED WEEKLY EITHER BY HAND OR BY MECHANICAL MEANS TO KEEP THE SITE CLEAR OF DIRT, DUST, AND DEBRIS.
4. WASTE MATERIALS ON-SITE SHOULD BE STORED IN COVERED CONTAINERS WHICH ARE CLEANED OUT REGULARLY.
5. TESTING OF FIRE HYDRANTS ON-SITE SHALL NOT BE CONDUCTED UNTIL THE AREA WHERE THE WATER DISCHARGES HAS BEEN SWEEPED CLEAN OF DIRT AND DEBRIS.
6. STORM DRAIN LINES SHOULD BE CHECKED AND CLEANED ANNUALLY TO KEEP THEM CLEAN AND CLEAR OF DEBRIS.
7. ALL ON-SITE STORM WATER INLETS SHOULD BE CLEARLY MARKED "STORM WATER ONLY".
- I. COMPLETION OF CONSTRUCTION ACTIVITIES AND NOTICE OF TERMINATION
- WHEN CONSTRUCTION ACTIVITIES HAVE BEEN COMPLETED ON THIS SITE, THE OWNER SHALL FILE A LETTER WITH THE STATE DEQ DIVISION OF WATER QUALITY. THIS LETTER SHALL CERTIFY THAT THE CONSTRUCTION ACTIVITY HAS BEEN COMPLETED, THAT ALL ELEMENTS OF THE SWPPP HAVE BEEN IMPLEMENTED, THAT CONSTRUCTION AND EQUIPMENT MAINTENANCE WASTES HAVE BEEN DISPOSED OF PROPERLY, THAT THE SITE IS IN COMPLIANCE WITH ALL LOCAL STORM WATER REQUIREMENTS INCLUDING EROSION/SEDIMENT CONTROL REQUIREMENTS, POLICIES, AND GUIDELINES.

DEFINITIONS

1. "BEST MANAGEMENT PRACTICES" ("BMP'S") MEANS SCHEDULES OF ACTIVITIES, PROHIBITIONS OF PRACTICES, MAINTENANCE PROCEDURES, AND OTHER MANAGEMENT PRACTICES TO PREVENT OR REDUCE THE POLLUTION OF WATERS OF THE UNITED STATES. BMP'S ALSO INCLUDE TREATMENT REQUIREMENTS, OPERATING PROCEDURES, AND PRACTICES TO CONTROL SITE RUNOFF, SPILLAGE OR LEAKS, WASTE DISPOSAL, OR DRAINAGE FROM RAW MATERIAL STORAGE.
2. "CLEAN WATER ACT" ("CWA") MEANS THE FEDERAL WATER POLLUTION CONTROL ACT ENACTED BY PUBLIC LAW 92-500 AS AMENDED BY PUBLIC LAWS 95-217, 95-576, 96-483, AND 97-111; 33 USC 1251 ET SEQ.
3. "CONSTRUCTION SITE" IS THE LOCATION OF THE CONSTRUCTION ACTIVITY.
4. "NON-STORM WATER DISCHARGE" MEANS ANY DISCHARGE TO STORM DRAIN SYSTEMS THAT IS NOT COMPOSED ENTIRELY OF STORM WATER EXCEPT DISCHARGE PURSUANT TO AN NPDES PERMIT AND DISCHARGES RESULTING FROM FIRE FIGHTING ACTIVITIES.
5. "SIGNIFICANT MATERIALS" INCLUDES, BUT IS NOT LIMITED TO RAW MATERIALS; FUELS; MATERIALS SUCH AS SOLVENTS, DETERGENTS, AND PLASTIC PELLETS; FINISHED MATERIALS SUCH AS METALLIC PRODUCTS; RAW MATERIALS USED IN FOOD PROCESSING OR PRODUCTION HAZARDOUS SUBSTANCES DESIGNATED UNDER SECTION 101(14) OF THE COMPREHENSIVE ENVIRONMENTAL RESPONSE, COMPENSATION, AND LIABILITY ACT (CERCLA); ANY CHEMICAL THE FACILITY IS REQUIRED TO REPORT PURSUANT TO SECTION 315 OF TITLE III OF SUPERFUND AMENDMENTS AND REAUTHORIZATION ACT (SARA); FERTILIZERS; PESTICIDES; AND WASTE PRODUCTS SUCH AS ASHES, SLAG, AND SLUDGE THAT HAVE THE POTENTIAL TO BE RELEASED WITH STORM WATER DISCHARGES.
6. "SIGNIFICANT QUANTITIES" IS THE VOLUME, CONCENTRATIONS, OR MASS OF A POLLUTANT IN STORM WATER DISCHARGE THAT CAN CAUSE OR THREATEN TO CAUSE POLLUTION, CONTAMINATION, OR NUISANCE; ADVERSELY IMPACT HUMAN HEALTH OR THE ENVIRONMENT; AND CAUSE OR CONTRIBUTE TO A VIOLATION OF ANY APPLICABLE WATER QUALITY STANDARDS FOR THE RECEIVING WATER.
7. "STORM WATER" MEANS STORM WATER RUNOFF, SNOW MELT RUNOFF, SURFACE RUNOFF AND DRAINAGE. IT EXCLUDES INFILTRATION AND RUNOFF FROM AGRICULTURAL LAND.
8. "POLLUTION" MEANS THE "MAN-MADE OR MAN-INDUCED ALTERATION OF THE CHEMICAL, PHYSICAL, BIOLOGICAL, AND RADIOLOGICAL INTEGRITY OF WATER" [CLEAN WATER ACT SECTION 502(19)]. POLLUTION ALSO MEANS "AN ALTERATION OF THE QUALITY OF THE WATERS OF THE STATE BY WASTE TO A DEGREE WHICH UNREASONABLY AFFECTS EITHER... THE WATERS FOR BENEFICIAL USES... OR FACILITIES WHICH SERVE THESE BENEFICIAL USES." [CALIFORNIA WATER CODE SECTION 13050(1)].
9. "CONTAMINATION" MEANS "AN IMPAIRMENT OF THE QUALITY OF THE WATERS OF THE STATE BY WASTE TO A DEGREE WHICH CREATES A HAZARD TO THE PUBLIC HEALTH THROUGH POISONING OR THROUGH THE SPREAD OF DISEASE...INCLUDING ANY EQUIVALENT EFFECT RESULTING FROM THE DISPOSAL OF WASTE, WHETHER OR NOT WATERS OF THE STATE ARE AFFECTED."
10. "NUISANCE" MEANS "ANYTHING WHICH MEETS ALL OF THE FOLLOWING REQUIREMENTS: (1) IS INJURIOUS TO HEALTH... OR INDECENT OR OFFENSIVE TO THE SENSES; OR AN OBSTRUCTION TO THE FREE USE OF PROPERTY, SO AS TO INTERFERE WITH THE COMFORTABLE ENJOYMENT OF LIFE AND PROPERTY; (2) AFFECTS AT THE SAME TIME AN ENTIRE COMMUNITY OR NEIGHBORHOOD, OR ANY CONSIDERABLE NUMBER OF PERSONS, ALTHOUGH THE EXTENT OF THE ANNOYANCE OR DAMAGE INFLICTED UPON INDIVIDUALS MAY BE UNEQUAL; (3) OCCURS DURING OR AS A RESULT OF THE TREATMENT OR DISPOSAL OF WASTES."
11. "LOCAL AGENCY" MEANS ANY AGENCY THAT IS INVOLVED WITH REVIEW, APPROVAL, OR OVERSIGHT OF THE CONSTRUCTION SITES' (a) CONSTRUCTION ACTIVITY, (b) EROSION AND SEDIMENT CONTROLS, (c) STORM WATER DISCHARGE.

CERTIFICATION

I CERTIFY UNDER PENALTY OF PERJURY THAT THIS DOCUMENT AND ALL ATTACHMENTS WERE PREPARED UNDER MY DIRECTION OR SUPERVISION IN ACCORDANCE WITH A SYSTEM DESIGNED TO ASSURE THAT QUALIFIED PERSONNEL PROPERLY GATHER AND EVALUATE THE INFORMATION SUBMITTED. BASED ON MY INQUIRY OF THE PERSON OR PERSONS WHO MANAGE THE SYSTEM OR THOSE PERSONS DIRECTLY RESPONSIBLE FOR GATHERING THE INFORMATION, THE INFORMATION SUBMITTED IS TO THE BEST OF MY KNOWLEDGE AND BELIEF, TRUE, ACCURATE, AND COMPLETE. I AM AWARE THAT THERE ARE SIGNIFICANT PENALTIES FOR SUBMITTING FALSE INFORMATION, INCLUDING THE POSSIBILITY OF FINE AND IMPRISONMENT FOR KNOWING VIOLATIONS.

MARK E. BABBITT REGISTERED CIVIL ENGINEER NO. 6728 GREAT BASIN ENGINEERING, INC.		DEVELOPER	
CONTRACTORS			
NAME	SIGNATURE	ROLE-COMPANY	DEFINITION OF OPERATION
NAME	SIGNATURE	ROLE-COMPANY	DEFINITION OF OPERATION
NAME	SIGNATURE	ROLE-COMPANY	DEFINITION OF OPERATION
NAME	SIGNATURE	ROLE-COMPANY	DEFINITION OF OPERATION
NAME	SIGNATURE	ROLE-COMPANY	DEFINITION OF OPERATION
NAME	SIGNATURE	ROLE-COMPANY	DEFINITION OF OPERATION
NAME	SIGNATURE	ROLE-COMPANY	DEFINITION OF OPERATION
NAME	SIGNATURE	ROLE-COMPANY	DEFINITION OF OPERATION
NAME	SIGNATURE	ROLE-COMPANY	DEFINITION OF OPERATION
NPDES I.D. NUMBER UTR _____			

Storm Water Pollution  
Prevention Plan Notes

The Chalets at Ski Lake Phase 5

A part of the Southwest 1/4 of Section 13, a part of the Northeast 1/4 of Section 23, and a part of the Northwest 1/4 of Section 24, T6N, R1E, SLB&M, U.S. Survey



GREAT BASIN ENGINEERING NORTH

CONSULTING ENGINEERS AND SURVEYORS

5746 South 1475 East Suite 200

Ogden, Utah 84403

P.O. Box 150048, Ogden, Utah 84415

Ogden (801)394-4515 Salt Lake City (801)521-0222 Fax (801)392-7544

SCALE :

NTS

DATE :

24 Jun, 2009

DRWG. NO.

DRAWN :

MRK

REVISIONS :

2 Nov, 2011

96N120 PH 5

of 6