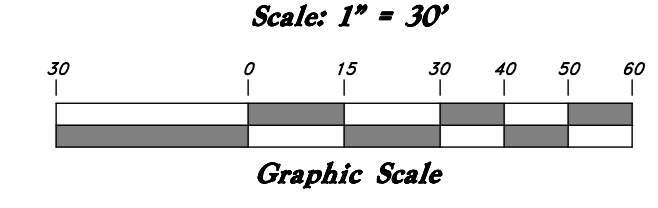
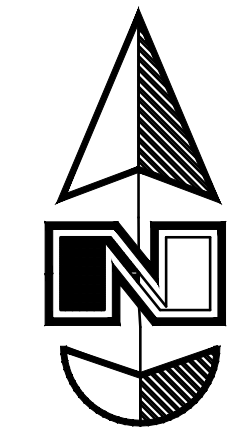


General Demolition Notes:

- Demolition and site clearing for this contract are to include all areas shown within demolition limits or by note.
- Refer to site improvement plans for more details on limits of removal.
- Demolish existing buildings and clear from site. (including removal of all footings and foundations.)
- All curbs, gutters, walks, slabs, walls, fences, flatwork, asphalt, waterlines and meters, gas lines, sewer lines, light poles, buried cables, storm drain piping and structures to be cleared from site unless otherwise shown.
- All utilities, sewer, water, gas, telephone and electrical services to be disconnected and capped according to city, county and utility company requirements, unless otherwise shown.
- Basements and other excavated areas to be backfilled with clean granular material compacted to 95% of maximum lab density as determined by ASTM D 1557-78. (Test results to be given to owner)
- Clear and grub trees, shrubs, and vegetation within construction limits, disposal to be off-site. Except where noted otherwise.
- DO NOT interrupt any services or disrupt the operation of any businesses shown outside the demolition limits.
- If ASBESTOS is found in existing structures, the Asbestos must be removed in a legal manner by a contractor licensed to handle asbestos materials. (Not a part of contract)
- Remove debris, rubbish, and other materials resulting from the demolition and site clearing operations from the site and dispose of in a legal manner.
- The location and/or elevation of existing utilities as shown on these plans is based on records of the various utility companies and, where possible, measurements taken in the field. The information is not to be relied upon as being exact or complete. Contractor shall contact authorities having jurisdiction for field locations. Contractor shall be responsible for protection of in place and relocated utilities during construction.
- Stockpiles shall be graded to maintain slopes not greater than 3 horizontal to 1 vertical. Provide erosion control as needed to prevent sediment transport to adjacent drainage ways.
- Contractor shall be responsible for disposal of all waste material. Disposal shall be at an approved site for such material. Burning onsite is not permitted.
- Contractor shall verify with city any street removal, curb cuts, and any restoration required for utility line removal.
- Install traffic warning devices as needed in accordance with local standards.
- Contractor shall obtain all permits necessary for demolition from City, County, State or Federal Agencies as required.

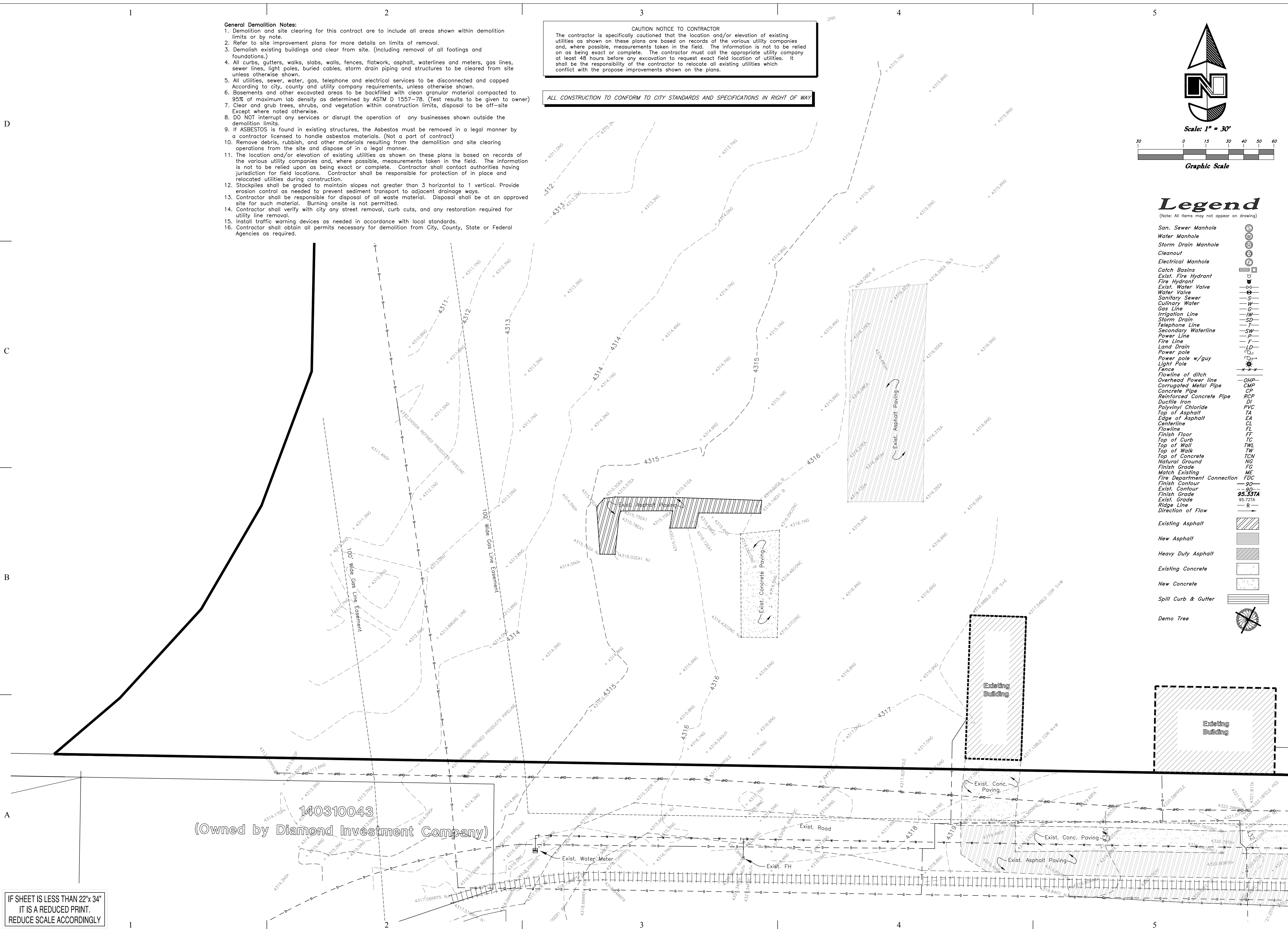
CAUTION NOTICE TO CONTRACTOR
The contractor is specifically cautioned that the location and/or elevation of existing utilities as shown on these plans are based on records of the various utility companies and, where possible, measurements taken in the field. The information is not to be relied upon as being exact or complete. The contractor must call the appropriate utility company at least 48 hours before any excavation to request exact field location of utilities. It shall be the responsibility of the contractor to relocate all existing utilities which conflict with the proposed improvements shown on the plans.

ALL CONSTRUCTION TO CONFORM TO CITY STANDARDS AND SPECIFICATIONS IN RIGHT OF WAY

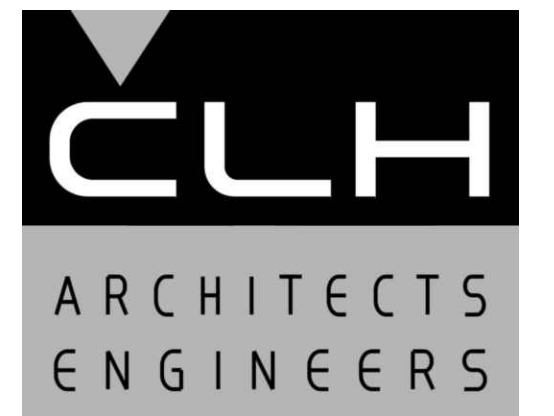


Legend

- (Note: All items may not appear on drawing)
- San. Sewer Manhole
 - Water Manhole
 - Storm Drain Manhole
 - Cleanout
 - Electrical Manhole
 - Catch Basins
 - Exist. Fire Hydrant
 - Exist. Water Valve
 - Water Valve
 - Sanitary Sewer
 - Culinary Water
 - Gas Line
 - Irrigation Line
 - Storm Drain
 - Telephone Line
 - Secondary Waterline
 - Power Line
 - Fire Line
 - Land Drain
 - Power pole
 - Power pole w/guy
 - Light Pole
 - Fence
 - Flowline of ditch
 - Overhead Power line
 - Corrugated Metal Pipe
 - Concrete Pipe
 - Reinforced Concrete Pipe
 - Ductile Iron
 - Polyvinyl Chloride
 - Top of Asphalt
 - Edge of Asphalt
 - Centerline
 - Flowline
 - Finish Floor
 - Top of Curb
 - Top of Wall
 - Top of Walk
 - Top of Concrete
 - Natural Ground
 - Finish Grade
 - Match Existing
 - Fire Department Connection
 - Finish Contour
 - Exist. Contour
 - Finish Grade
 - Exist. Grade
 - Ridge Line
 - Direction of Flow
 - Existing Asphalt
 - New Asphalt
 - Heavy Duty Asphalt
 - Existing Concrete
 - New Concrete
 - Spill Curb & Gutter
 - Demol Tree



IF SHEET IS LESS THAN 22" x 34"
IT IS A REDUCED PRINT.
REDUCE SCALE ACCORDINGLY



Case, Lowe & Hart, Inc. • 2484 Washington Blvd.
Suite 510 • Ogden, Utah • 84401
801.399.5821 • Fax 801.399.0728 • www.clhae.com

CONSULTANTS

STAMP



GRANT TRUCKING TRUCK MAINTENANCE SHOP
910 W 24th STREET
OGDEN, UTAH 84401

MARK	DATE	DESCRIPTION

ISSUE DATE: AUG 28, 2015
PROJECT NO: 15460
CAD DWG FILE:
DRAWN BY:
CHK'D BY:

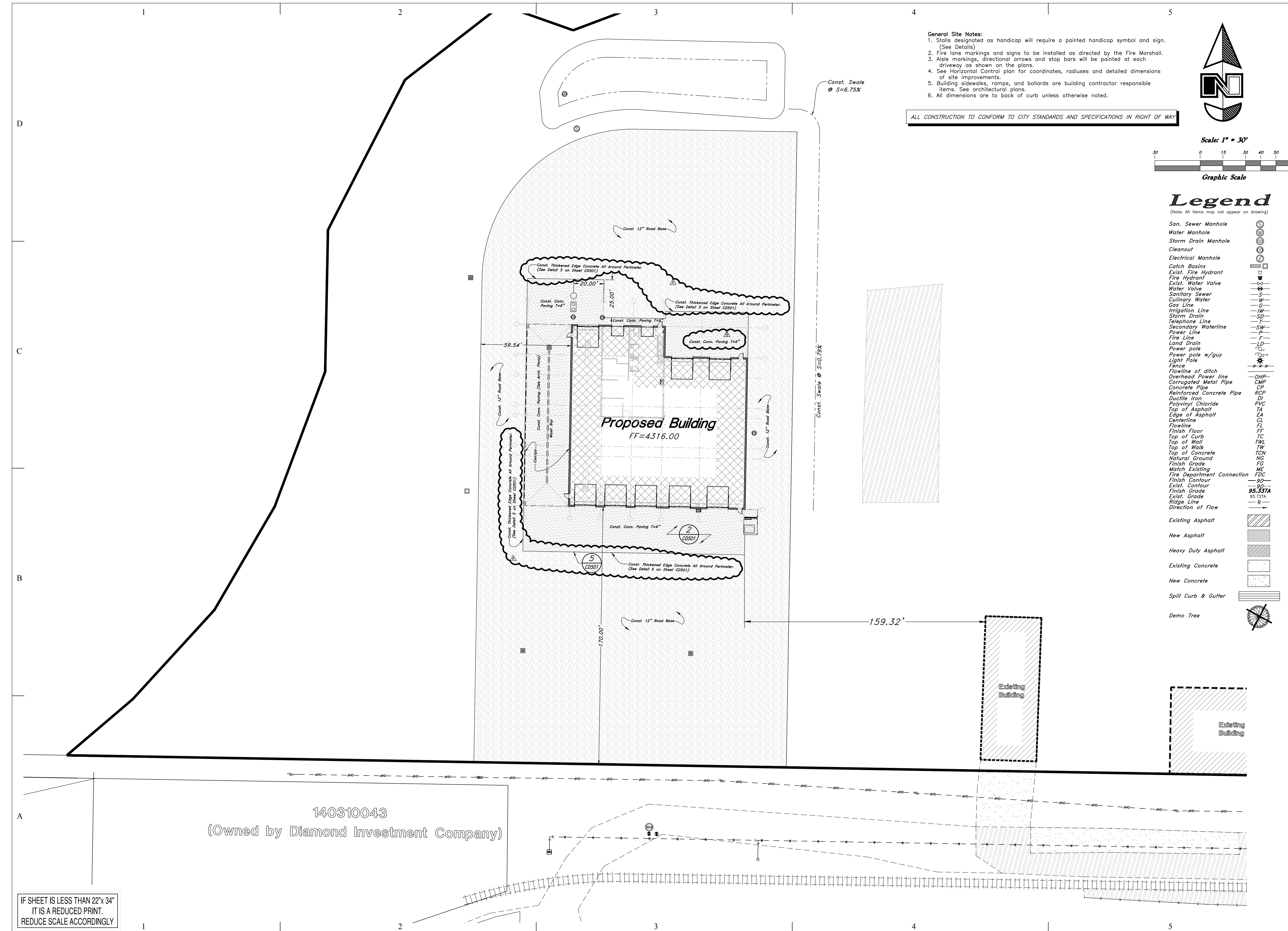
PERMIT SET
AUG 19, 2016

SHEET TITLE

Demolition Plan

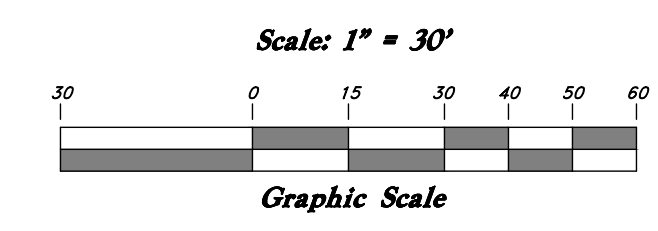
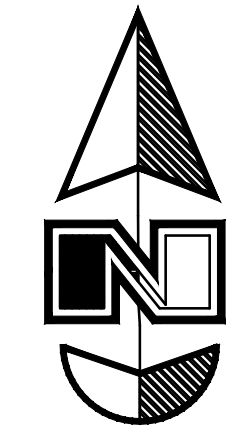
SHEET NO:

CD101



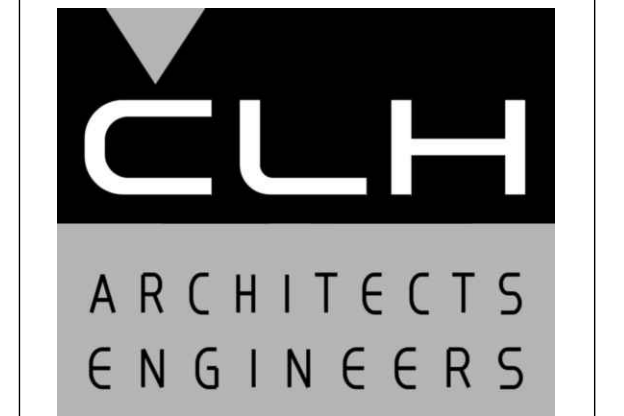
- General Site Notes:**
1. Stalls designated as handicap will require a painted handicap symbol and sign. (See Details)
 2. Fire lane markings and signs to be installed as directed by the Fire Marshall.
 3. Aisle markings, directional arrows and stop bars will be painted at each driveway as shown on the plans.
 4. See Horizontal Control plan for coordinates, radiuses and detailed dimensions of site improvements.
 5. Building sidewalks, ramps, and bollards are building contractor responsible items. See architectural plans.
 6. All dimensions are to back of curb unless otherwise noted.

ALL CONSTRUCTION TO CONFORM TO CITY STANDARDS AND SPECIFICATIONS IN RIGHT OF WAY



Legend

- (Note: All items may not appear on drawing)
- San. Sewer Manhole
 - Water Manhole
 - Storm Drain Manhole
 - Cleanout
 - Electrical Manhole
 - Catch Basins
 - Exist. Fire Hydrant
 - Fire Hydrant
 - Exist. Water Valve
 - Water Valve
 - Sanitary Sewer
 - Cullinary Water
 - Gas Line
 - Irrigation Line
 - Storm Drain
 - Telephone Line
 - Secondary Waterline
 - Power Line
 - Fire Line
 - Land Drain
 - Power pole
 - Power pole w/guy
 - Light Pole
 - Fence
 - Flowline of ditch
 - Overhead Power line
 - Corrugated Metal Pipe
 - Concrete Pipe
 - Reinforced Concrete Pipe
 - Ductile Iron
 - Polyvinyl Chloride
 - Top of Asphalt
 - Edge of Asphalt
 - Centerline
 - Flowline
 - Finish Floor
 - Top of Curb
 - Top of Wall
 - Top of Walk
 - Top of Concrete
 - Natural Ground
 - Finish Grade
 - Match Existing
 - Fire Department Connection
 - Finish Contour
 - Exist. Contour
 - Finish Grade
 - Exist. Grade
 - Ridge Line
 - Direction of Flow
 - Existing Asphalt
 - New Asphalt
 - Heavy Duty Asphalt
 - Existing Concrete
 - New Concrete
 - Spill Curb & Gutter
 - Demo Tree



Case, Lowe & Hart, Inc. • 2484 Washington Blvd.
Suite 510 • Ogden, Utah • 84401
801.399.5821 • Fax 801.399.0728 • www.clhae.com

CONSULTANTS

STAMP

C



GRANT TRUCKING TRUCK MAINTENANCE SHOP

910 W 24th STREET
OGDEN, UTAH 84401

MARK	DATE	DESCRIPTION
▲	09-12-16	REVISION A
▲	09-21-16	REVISION B

ISSUE DATE:	AUG 28, 2015
PROJECT NO:	15460
CAD DWG FILE:	
DRAWN BY:	
CHK'D BY:	

PERMIT SET

AUG 19, 2016

SHEET TITLE

Site Plan

SHEET NO:

CS101

IF SHEET IS LESS THAN 22"x34"
IT IS A REDUCED PRINT.
REDUCE SCALE ACCORDINGLY

General Grading Notes:

- All work shall be in accordance with the City Public Works Standard.
- Cut slopes shall be no steeper than 2 horizontal to 1 vertical.
- Fill slopes shall be no steeper than 2 horizontal to 1 vertical.
- Dust shall be controlled by watering.
- The location and protection of all utilities is the responsibility of the permittee.
- Approved protective measures and temporary drainage provisions must be used to protect adjoining properties during the grading project.
- All public roadways must be cleared daily of all dirt, mud and debris deposited on them as a result of the grading operation. Cleaning is to be done to the satisfaction of the city engineer.
- The site shall be cleared and grubbed of all vegetation and deleterious matter prior to grading.
- The contractor shall provide shoring in accordance with OSHA requirements for trench walls.
- Aggregate base shall be compacted per the geotechnical report prepared for the project.
- Elevations shown on this plan are finish grades. Rough grades are the subgrades of the improvements shown herein.
- As part of the construction documents, owner has provided contractor with a topographic survey performed by manual or aerial means. Such survey was prepared for project design purposes and is provided to the contractor as a courtesy. It is expressly understood that such survey may not accurately reflect existing topographic conditions.
- Erosion Control: Protect all inlet boxes, catch basins, etc. with straw bales or other approved method to strain the storm water during construction. Protect surrounding properties and streets from site runoff with sandbags and earth berms.

Curb and Gutter Construction Notes:

- Open face gutter shall be constructed where drainage is directed away from curb.
- Open face gutter locations are indicated by shading and notes on site and grading plan.
- It is the responsibility of the surveyor to adjust top of curb grades at the time construction staking.
- Refer to the typical details for a standard and open face curb and gutter for dimensions.
- Transitions between open face and standard curb and gutter are to be smooth. Hand form these areas if necessary.

ADA Notes:

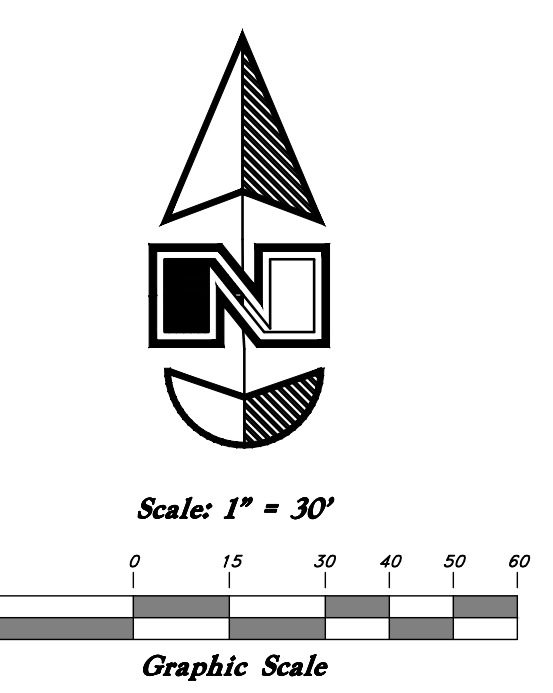
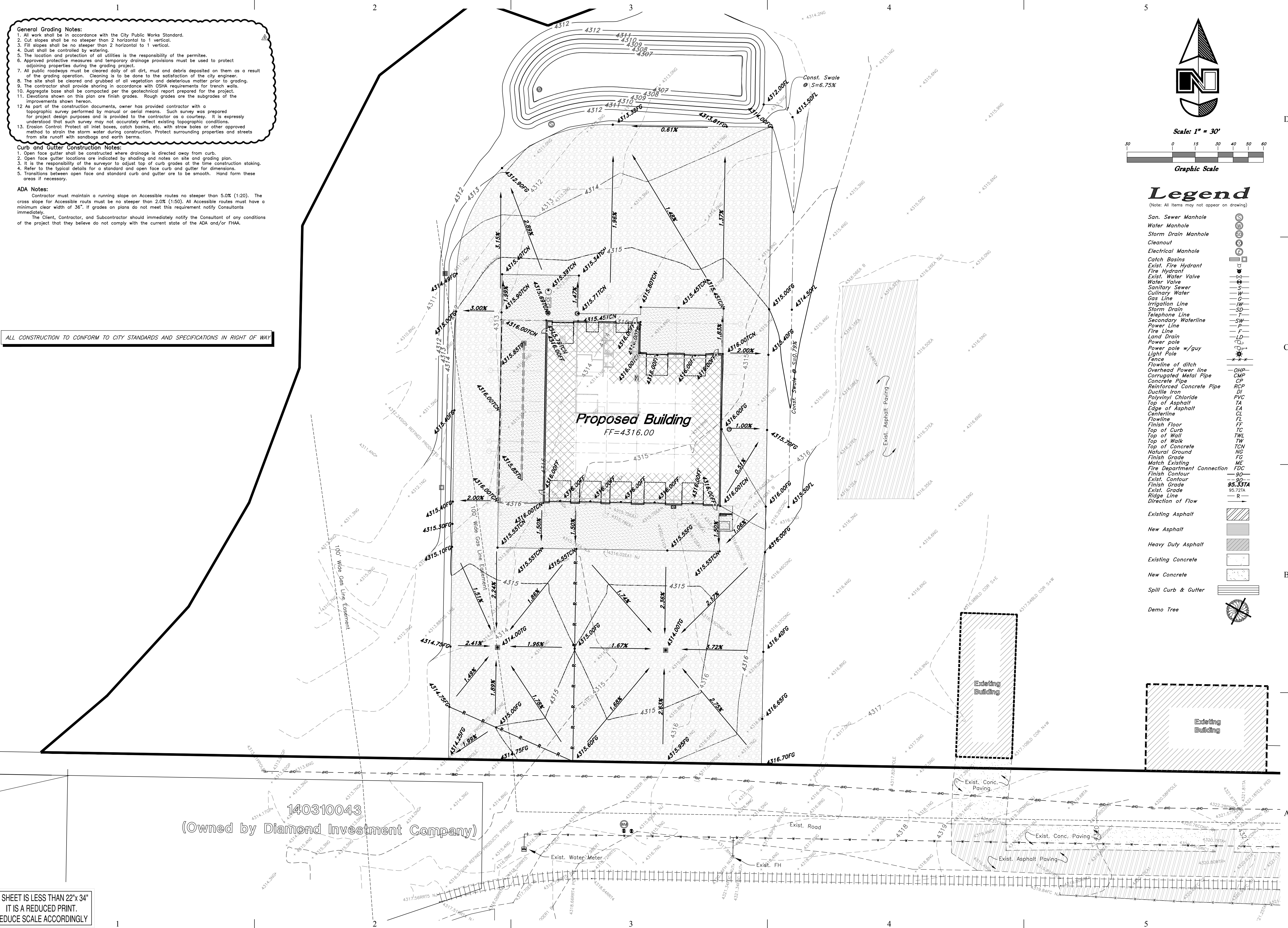
Contractor must maintain a running slope on Accessible routes no steeper than 5.0% (1:20). The cross slope for Accessible routes must be no steeper than 2.0% (1:50). All Accessible routes must have a minimum clear width of 36". If grades on plans do not meet this requirement, notify Consultants immediately.

The Client, Contractor, and Subcontractor should immediately notify the Consultant of any conditions of the project that they believe do not comply with the current state of the ADA and/or FHAA.

ALL CONSTRUCTION TO CONFORM TO CITY STANDARDS AND SPECIFICATIONS IN RIGHT OF WAY

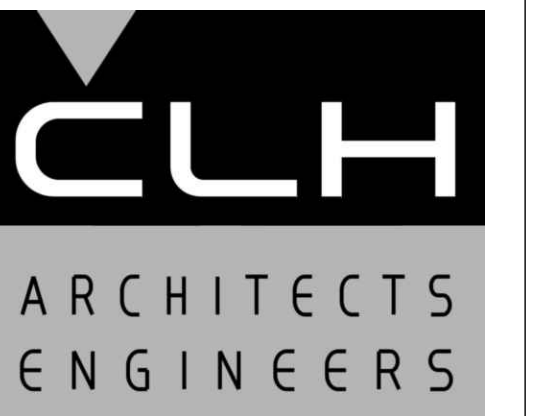
IF SHEET IS LESS THAN 22" x 34"
IT IS A REDUCED PRINT.
REDUCE SCALE ACCORDINGLY

© COPYRIGHT- CASE, LOWE & HART, INC. ALL RIGHTS RESERVED



Legend

- (Note: All items may not appear on drawing)
- San. Sewer Manhole
 - Water Manhole
 - Storm Drain Manhole
 - Cleanout
 - Electrical Manhole
 - Catch Basins
 - Exist. Fire Hydrant
 - Fire Hydrant
 - Exist. Water Valve
 - Water Valve
 - Sanitary Sewer
 - Culinary Water
 - Gas Line
 - Irrigation Line
 - Storm Drain
 - Telephone Line
 - Secondary Waterline
 - Power Line
 - Fire Line
 - Land Drain
 - Power pole w/guy
 - Light Pole
 - Fence
 - Flowline of ditch
 - Overhead Power line
 - Corrugated Metal Pipe
 - Concrete Pipe
 - Reinforced Concrete Pipe
 - Ductile Iron
 - Polyvinyl Chloride
 - Top of Asphalt
 - Edge of Asphalt
 - Centerline
 - Flowline
 - Finish Floor
 - Top of Curb
 - Top of Wall
 - Top of Walk
 - Top of Concrete
 - Natural Ground
 - Finish Grade
 - Match Existing
 - Fire Department Connection
 - Finish Contour
 - Exist. Contour
 - Finish Grade
 - Exist. Grade
 - Ridge Line
 - Direction of Flow
 - Existing Asphalt
 - New Asphalt
 - Heavy Duty Asphalt
 - Existing Concrete
 - New Concrete
 - Spill Curb & Gutter
 - Demo Tree



Case, Lowe & Hart, Inc. • 2484 Washington Blvd.
Suite 510 • Ogden, Utah • 84401
801.399.5821 • Fax 801.399.0728 • www.clhae.com

CONSULTANTS

STAMP



**GRANT TRUCKING
TRUCK
MAINTENANCE SHOP**

910 W 24th STREET
OGDEN, UTAH 84401

MARK	DATE	DESCRIPTION
▲	09-12-16	REVISION A

ISSUE DATE:	AUG 28, 2015
PROJECT NO:	15460
CAD DWG FILE:	
DRAWN BY:	
CHK'D BY:	

PERMIT SET
AUG 19, 2016

SHEET TITLE
**Grading &
Drainage Plan**

SHEET NO:
CG101

- General Utility Notes:**
- Coordinate all utility connections to building with plumbing plans and building contractor.
 - Verify depth and location of all existing utilities prior to constructing any new utility lines. Notify Civil Engineer of any discrepancies or conflicts prior to any connections being made.
 - All catch basin and inlet box grates are to be bicycle proof.
 - All inlet boxes located in curb and gutter are to be placed parallel to the curb and gutter and set under the frame and grate. Improperly placed boxes will be removed and replaced at no additional cost to the owner. Precast or cast in place boxes are acceptable.
 - Refer to the site electrical plan for details and locations of electrical lines, transformers and light poles.
 - Gas lines, telephone lines, and cable TV lines are not a part of these plans unless otherwise noted.
 - Water meters are to be installed per city standards and specifications. It will be the contractor's responsibility to install all items required.
 - Water lines, valves, fire hydrants, fittings etc. are to be constructed as shown. Contractor is responsible to construct any vertical adjustments necessary to clear sewer, storm drain or other utilities as necessary including valve boxes and hydrant spools to proper grade.
 - Field verify all existing and/or proposed Roof Drain/Roof Drain down spout connections to Storm Water System with Civil, Plumbing & Architectural plans. Notify Engineer of any discrepancies.

Utility Piping Materials:
All piping to be installed per manufacturers recommendations. Refer to project specifications for more detailed information regarding materials, installation, etc.

- Culinary Service Laterals**
- 3/4" to 2" diameter pipe - copper tube ASTM B, Type K, Soft Temper
 - Over 2" diameter pipe - AWWA C-900 Class 150 pipe

Water Main Lines and Fire Lines
1. Pipe material as shown on utility plan view or to meet city standards.

Sanitary Sewer Lines
1. All sewer piping to be Polyvinyl Chloride (PVC) sewer pipe, ASTM D 3034, Type PSM, SDR 35

- Storm Drain Lines**
- 10" pipes or smaller - Polyvinyl Chloride (PVC) sewer pipe, ASTM D3034, Type PSM, SDR 35
 - 12" to 21" pipes - Concrete Pipe, ASTM C14, Class III up to 13' of cover. For greater than 13' feet of cover, use reinforced concrete pipe and classes listed below.
 - 24" pipes or larger - Reinforced Concrete Pipe, ASTM C76, Class III up to 13' of cover, Class IV for 13' to 21' of cover, Class V for 21' to 32' of cover, and Special Design for cover greater than 32 feet.

CAUTION NOTICE TO CONTRACTOR
The contractor is specifically cautioned that the location and/or elevation of existing utilities as shown on these plans are based on records of the various utility companies and, where possible, measurements taken in the field. The information is not to be relied on as being exact or complete. The contractor must call the appropriate utility company at least 48 hours before any excavation to request exact field location of utilities. It shall be the responsibility of the contractor to relocate all existing utilities which conflict with the proposed improvements shown on the plans.

ALL CONSTRUCTION TO CONFORM TO CITY STANDARDS AND SPECIFICATIONS IN RIGHT OF WAY

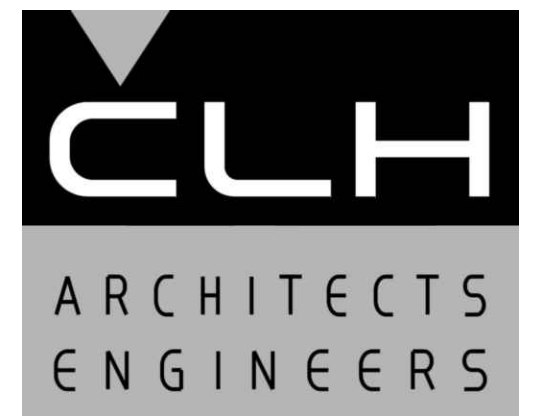
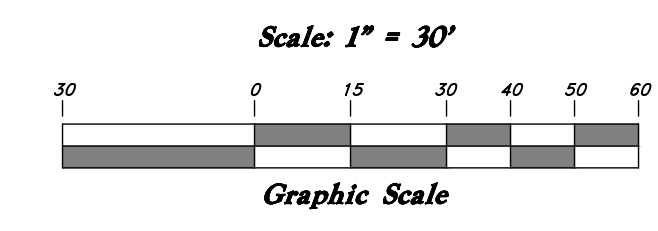
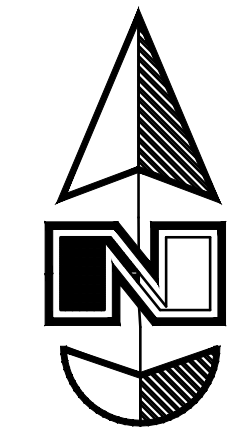
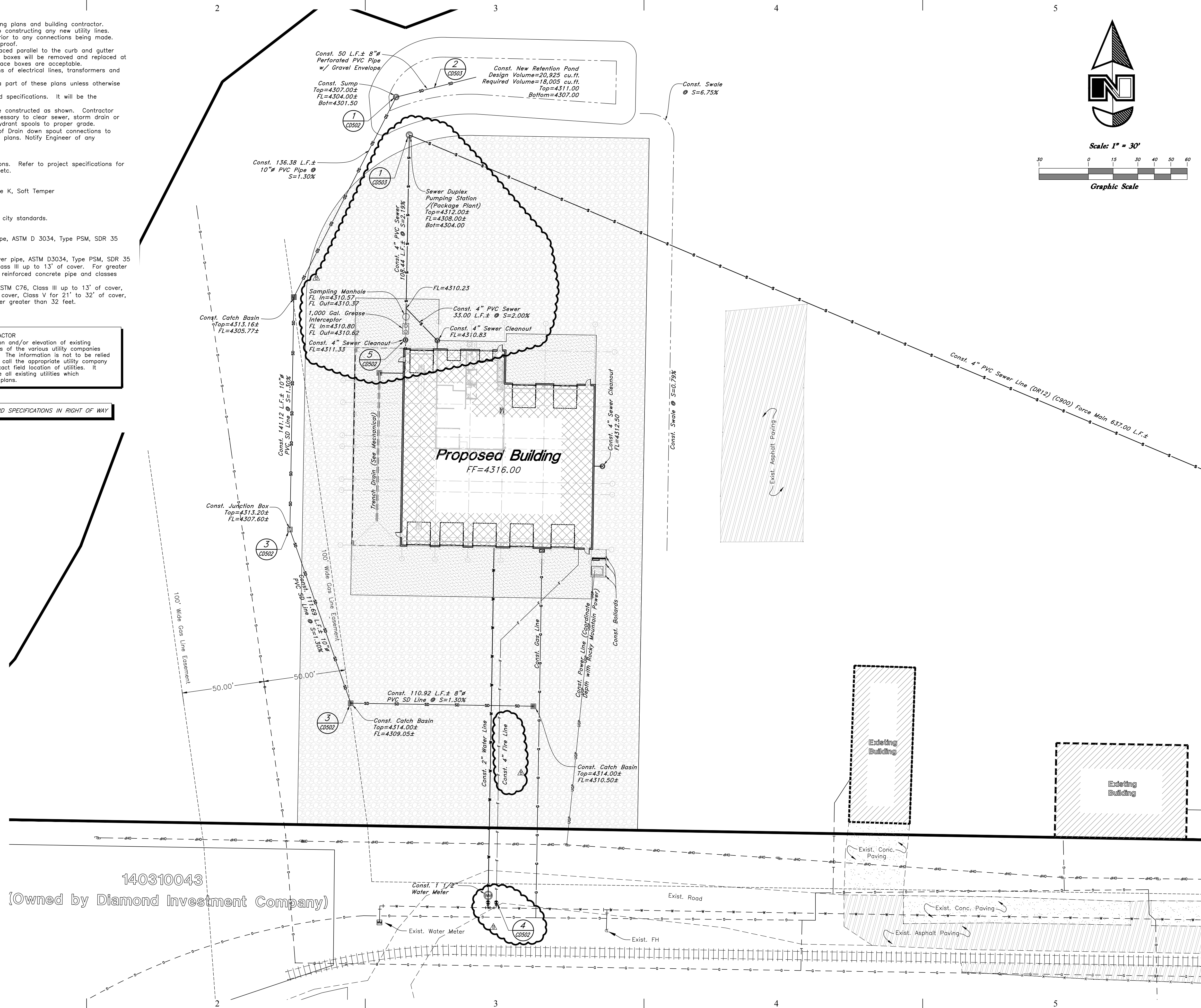
Legend

(Note: All items may not appear on drawing)

- San. Sewer Manhole
- Water Manhole
- Storm Drain Manhole
- Cleanout
- Electrical Manhole
- Catch Basins
- Exist. Fire Hydrant
- Fire Hydrant
- Exist. Water Valve
- Water Valve
- Sanitary Sewer
- Culinary Sewer
- Gas Line
- Irrigation Line
- Storm Drain
- Telephone Line
- Secondary Waterline
- Power Line
- Fire Line
- Land Drain
- Power pole
- Power pole w/guy
- Light Pole
- Fence
- Flowline of ditch
- Overhead Power line
- Corrugated Metal Pipe
- Concrete Pipe
- Reinforced Concrete Pipe
- Ductile Iron
- Polyvinyl Chloride
- Top of Asphalt
- Edge of Asphalt
- Centerline
- Flowline
- Finish Floor
- Top of Curb
- Top of Wall
- Top of Walk
- Top of Concrete
- Natural Ground
- Finish Grade
- Match Existing
- Fire Department Connection
- Finish Contour
- Exist. Contour
- Finish Grade
- Exist. Grade
- Ridge Line
- Direction of Flow
- Existing Asphalt
- New Asphalt
- Heavy Duty Asphalt
- Existing Concrete
- New Concrete
- Spill Curb & Gutter
- Demo Tree

IF SHEET IS LESS THAN 22" x 34"
IT IS A REDUCED PRINT.
REDUCE SCALE ACCORDINGLY

140310043
(Owned by Diamond Investment Company)



D Case, Lowe & Hart, Inc. • 2484 Washington Blvd.
Suite 510 • Ogden, Utah • 84401
801.399.5821 • Fax 801.399.0728 • www.clhae.com

CONSULTANTS

STAMP



**GRANT TRUCKING
TRUCK
MAINTENANCE SHOP**

910 W 24th STREET
OGDEN, UTAH 84401

MARK	DATE	DESCRIPTION
▲	09-21-16	REVISION B

ISSUE DATE:	AUG 28, 2015
PROJECT NO:	15460
CAD DWG FILE:	
DRAWN BY:	
CHK'D BY:	

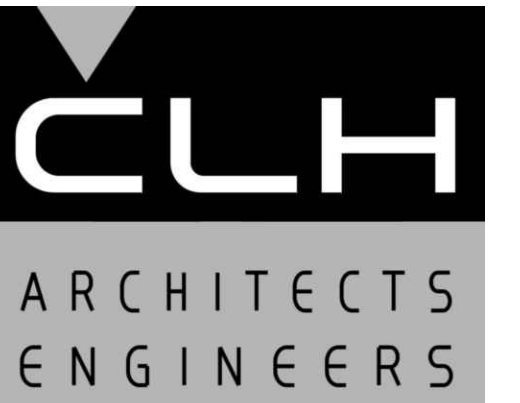
PERMIT SET
AUG 19, 2016

SHEET TITLE

Utility Plan

SHEET NO:

CU101



Case, Lowe & Hart, Inc. • 2484 Washington Blvd. Suite 510 • Ogden, Utah • 84401
801.399.5821 • Fax 801.399.0728 • www.clhae.com

CONSULTANTS

STAMP



GRANT TRUCKING TRUCK MAINTENANCE SHOP

910 W 24th STREET
OGDEN, UTAH 84401

MARK	DATE	DESCRIPTION
▲	09-21-16	REVISION B

ISSUE DATE: AUG 28, 2015

PROJECT NO: 15460

CAD DWG FILE:

DRAWN BY:

CHK'D BY:

PERMIT SET

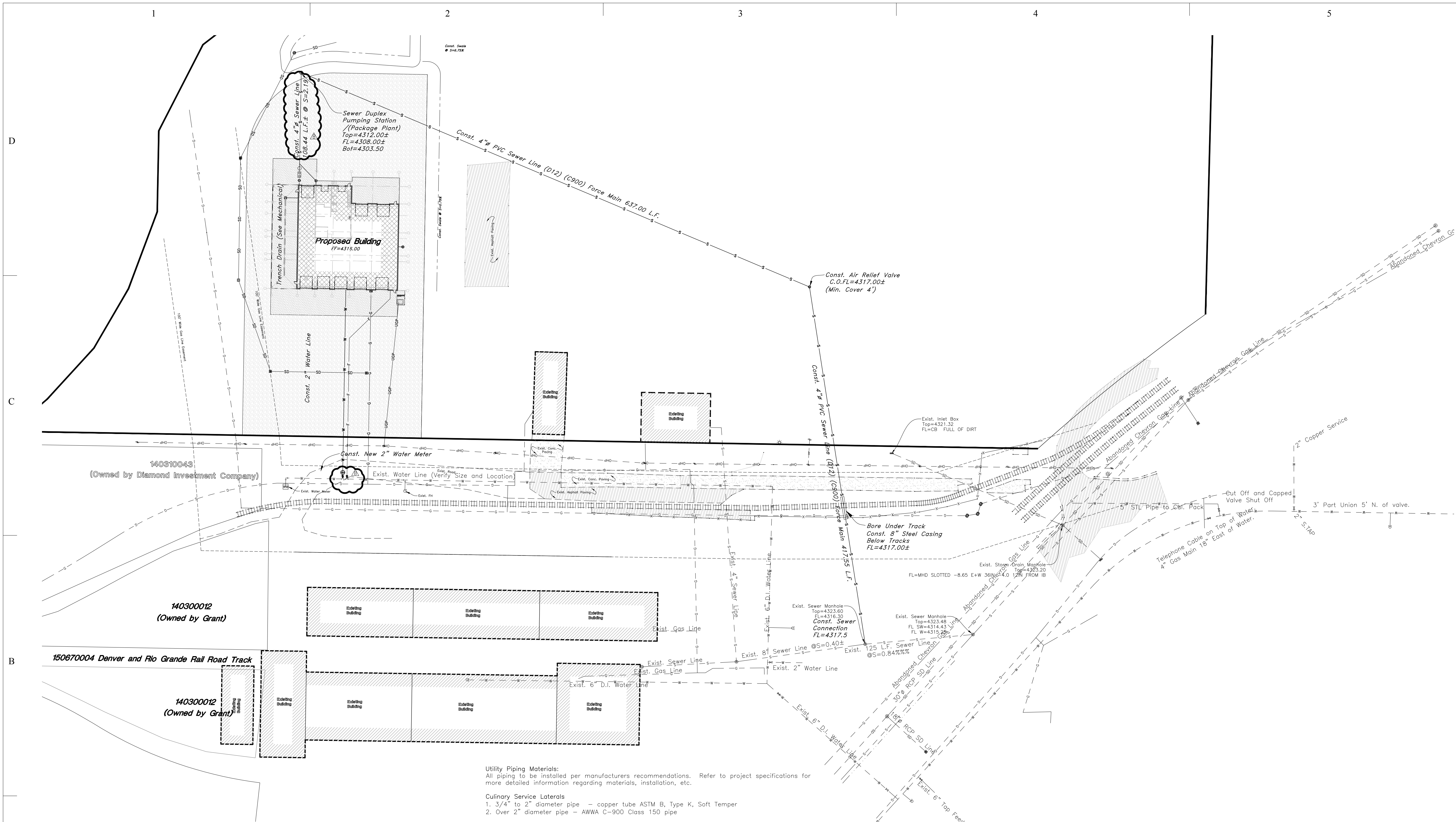
AUG 19, 2016

SHEET TITLE

Overall Utility Plan

SHEET NO:

CU102



- Utility Piping Materials:**
All piping to be installed per manufacturers recommendations. Refer to project specifications for more detailed information regarding materials, installation, etc.
- Culinary Service Laterals**
1. 3/4" to 2" diameter pipe - copper tube ASTM B, Type K, Soft Temper
2. Over 2" diameter pipe - AWWA C-900 Class 150 pipe
- Water Main Lines and Fire Lines**
1. Pipe material as shown on utility plan view or to meet city standards.
- Sanitary Sewer Lines**
1. All sewer piping to be Polyvinyl Chloride (PVC) sewer pipe, ASTM D 3034, Type PSM, SDR 35
- Storm Drain Lines**
1. 10" pipes or smaller - Polyvinyl Chloride (PVC) sewer pipe, ASTM D3034, Type PSM, SDR 35
2. 12" to 21" pipes - Concrete Pipe, ASTM C14, Class III up to 13' of cover. For greater than 13' feet of cover, use reinforced concrete pipe and classes listed below.
3. 24" pipes or larger - Reinforced Concrete Pipe, ASTM C76, Class III up to 13' of cover, Class IV for 13' to 21' of cover, Class V for 21' to 32' of cover, and Special Design for cover greater than 32 feet.

- General Utility Notes:**
1. Coordinate all utility connections to building with plumbing plans and building contractor.
2. Verify depth and location of all existing utilities prior to constructing any new utility lines. Notify Civil Engineer of any discrepancies or conflicts prior to any connections being made.
3. All catch basin and inlet box grates are to be bicycle proof.
4. All inlet boxes located in curb and gutter are to be placed parallel to the curb and gutter and set under the frame and grate. Improperly placed boxes will be removed and replaced at no additional cost to the owner. Precast or cast in place boxes are acceptable.
5. Refer to the site electrical plan for details and locations of electrical lines, transformers and light poles.
6. Gas lines, telephone lines, and cable TV lines are not a part of these plans unless otherwise noted.
7. Water meters are to be installed per city standards and specifications. It will be the contractor's responsibility to install all items required.
8. Water lines, valves, fire hydrants, fittings etc. are to be constructed as shown. Contractor is responsible to construct any vertical adjustments necessary to clear sewer, storm drain or other utilities as necessary including valve boxes and hydrant spools to proper grade.
9. Field verify all existing and/or proposed Roof Drain/Roof Drain down spout connections to Storm Water System with Civil, Plumbing & Architectural plans. Notify Engineer of any discrepancies.

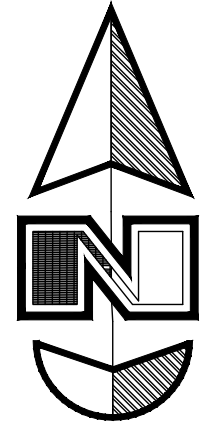
CAUTION NOTICE TO CONTRACTOR
The contractor is specifically cautioned that the location and/or elevation of existing utilities as shown on these plans are based on records of the various utility companies and, where possible, measurements taken in the field. The information is not to be relied on as being exact or complete. The contractor must call the appropriate utility company at least 48 hours before any excavation to request exact field location of utilities. It shall be the responsibility of the contractor to relocate all existing utilities which conflict with the proposed improvements shown on the plans.

ALL CONSTRUCTION TO CONFORM TO CITY STANDARDS AND SPECIFICATIONS IN RIGHT OF WAY

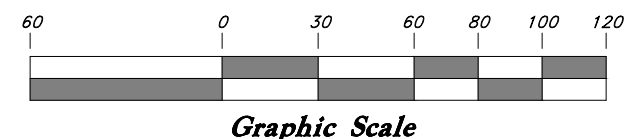
Legend

(Note: All items may not appear on drawing)

<ul style="list-style-type: none"> San. Sewer Manhole Water Manhole Storm Drain Manhole Cleanout Electrical Manhole Catch Basins Exist. Fire Hydrant Exist. Water Valve Water Valve Sanitary Sewer Culinary Water Gas Line Irrigation Line Storm Drain Telephone Line Secondary Waterline Power Line Fire Line Land Drain Power pole 	<ul style="list-style-type: none"> Power pole w/guy Light Pole Fence Flowline of ditch Overhead Power line Corrugated Metal Pipe Concrete Pipe Reinforced Concrete Pipe Ductile Iron Polyvinyl Chloride Top of Asphalt Edge of Asphalt Flowline Finish Floor Top of Curb Top of Wall Top of Walk Top of Concrete Natural Ground Finish Grade Match, Existing Fire Department Connection Finish Contour Exist. Contour Finish Grade 	<ul style="list-style-type: none"> Exist. Grade Ridge Line Direction of Flow Existing Asphalt New Asphalt Heavy Duty Asphalt Existing Concrete New Concrete Spill Curb & Gutter Demo Tree 	<ul style="list-style-type: none"> 95.721A R OHP CMP CP RCP DI PVC TA EA FL FF TC TWL TW TCN NG FC ME TDC 90 95.337A
--	---	---	--



Scale: 1" = 60'



IF SHEET IS LESS THAN 22" x 34"
IT IS A REDUCED PRINT.
REDUCE SCALE ACCORDINGLY

CONSULTANTS

STAMP



**GRANT TRUCKING
TRUCK
MAINTENANCE SHOP**

910 W 24th STREET
OGDEN, UTAH 84401

MARK	DATE	DESCRIPTION
△	09-12-16	REVISION A
△	09-21-16	REVISION B

ISSUE DATE:	AUG 28, 2015
PROJECT NO:	15460
CAD DWG FILE:	
DRAWN BY:	
CHK'D BY:	

PERMIT SET

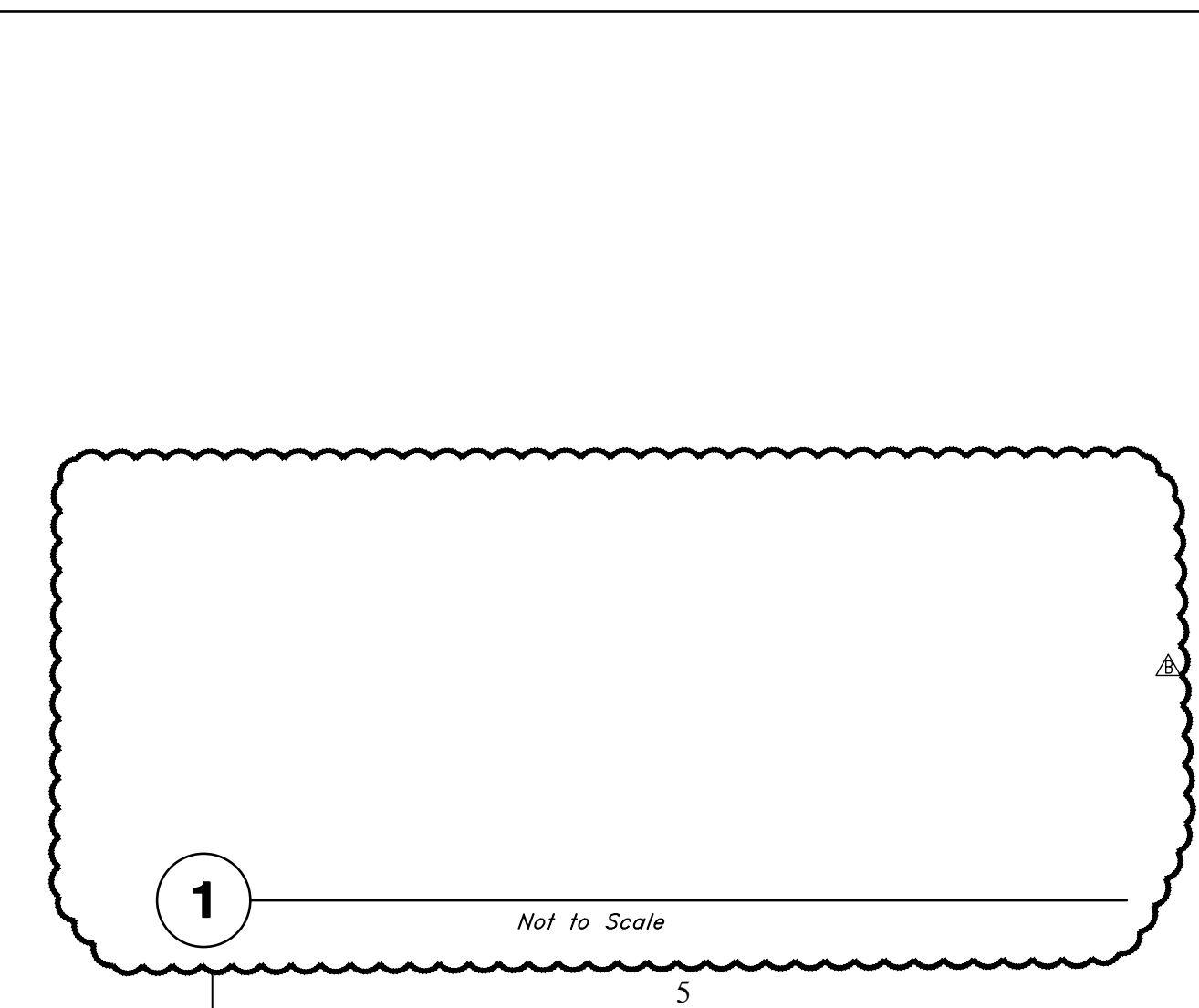
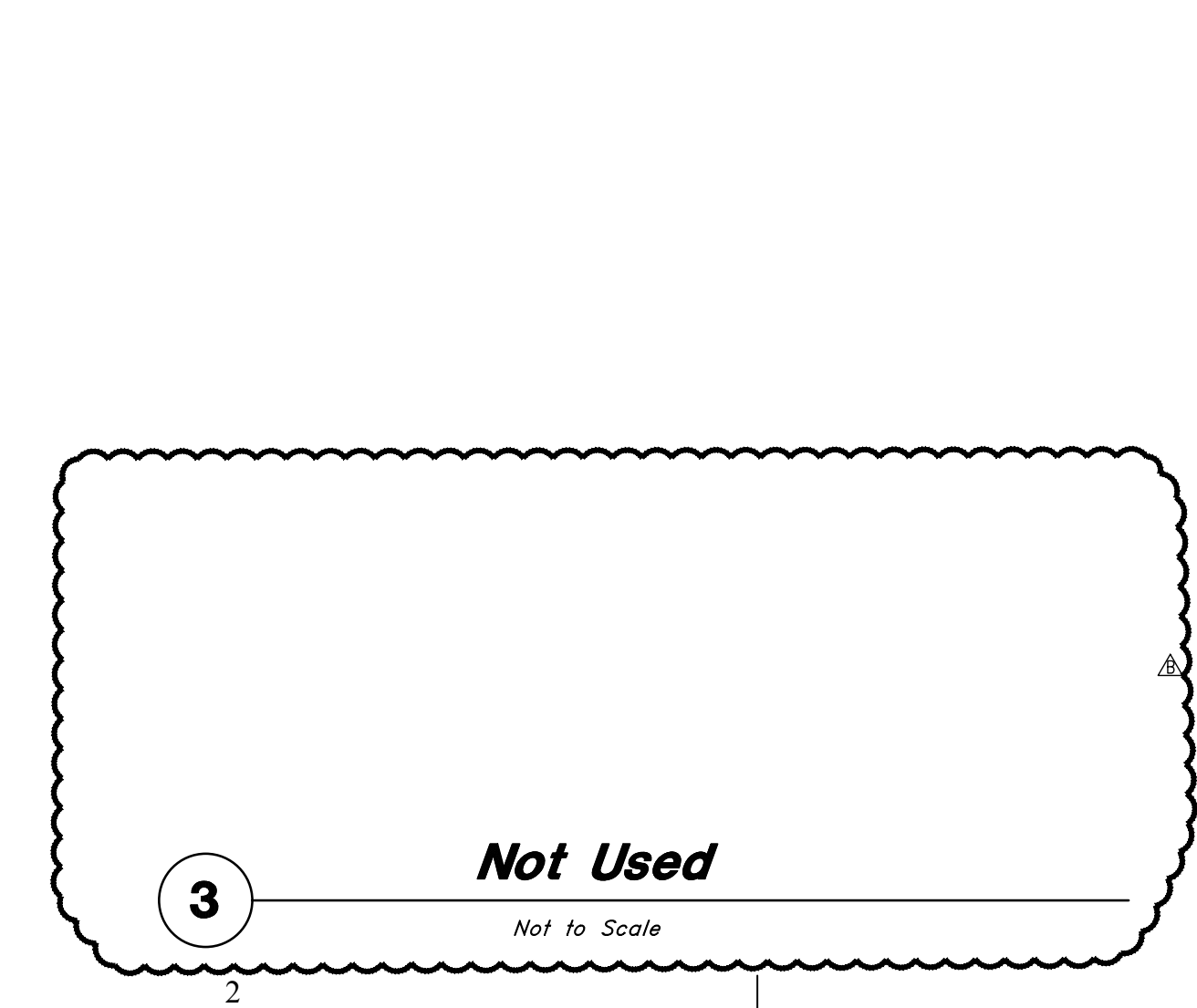
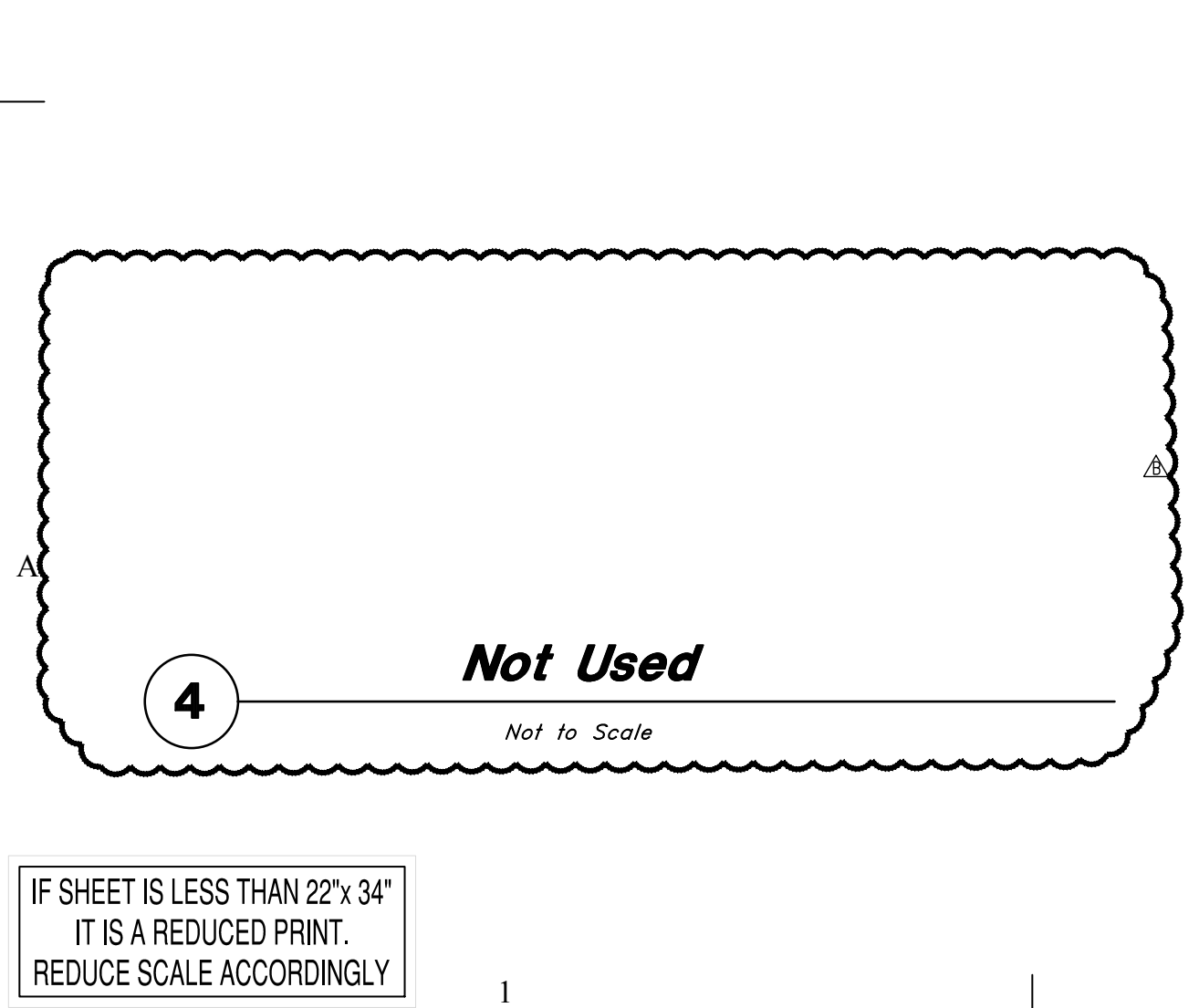
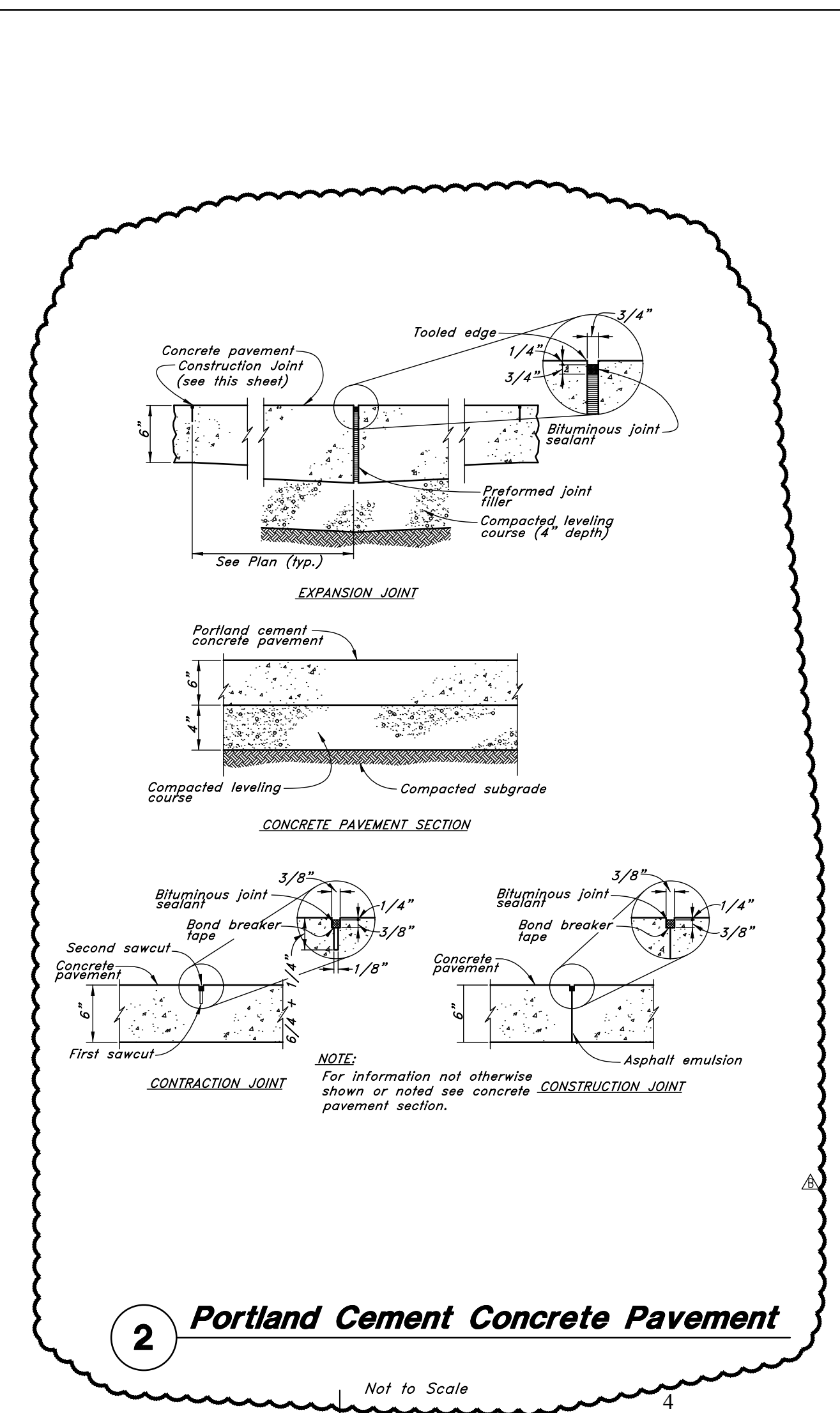
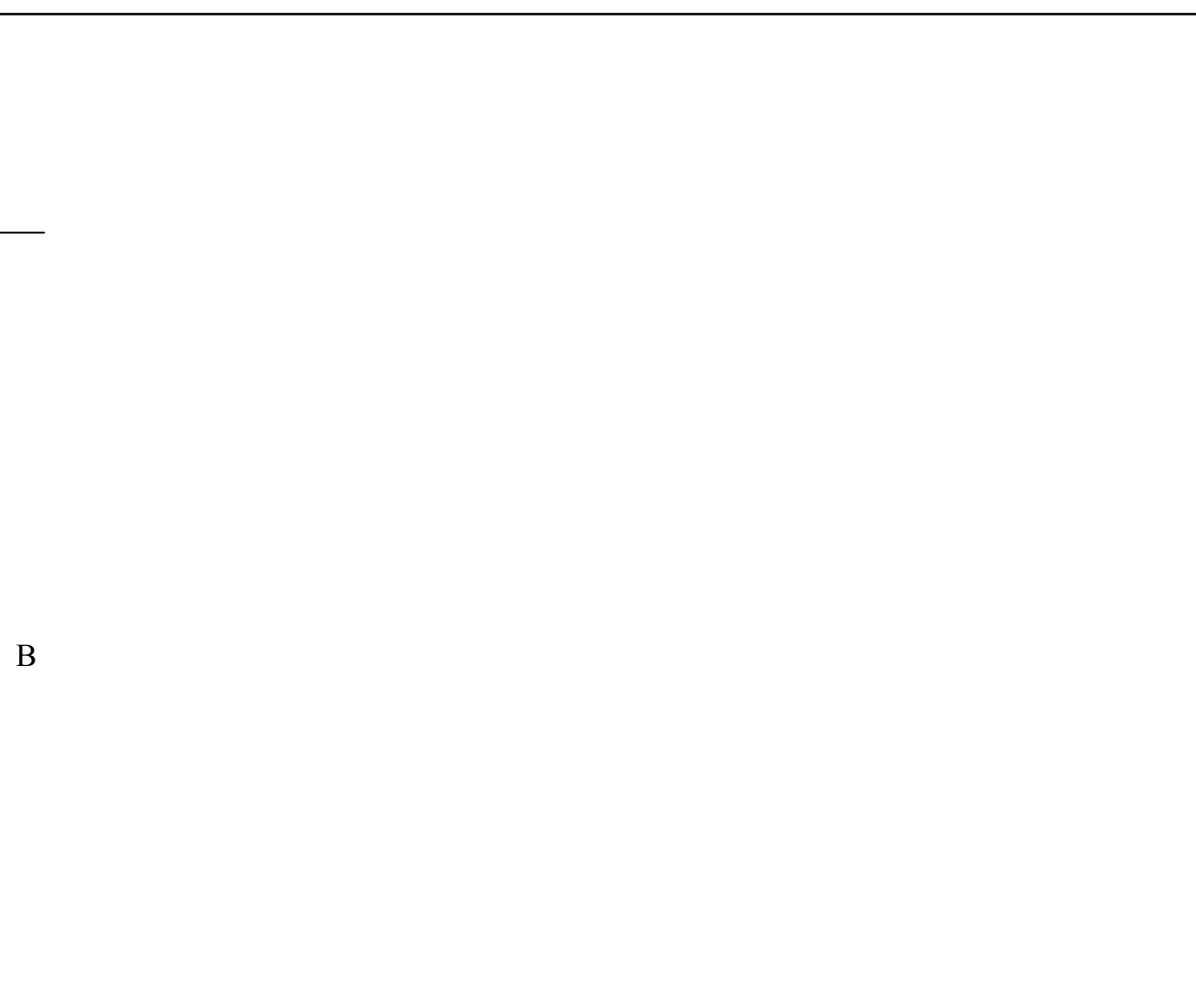
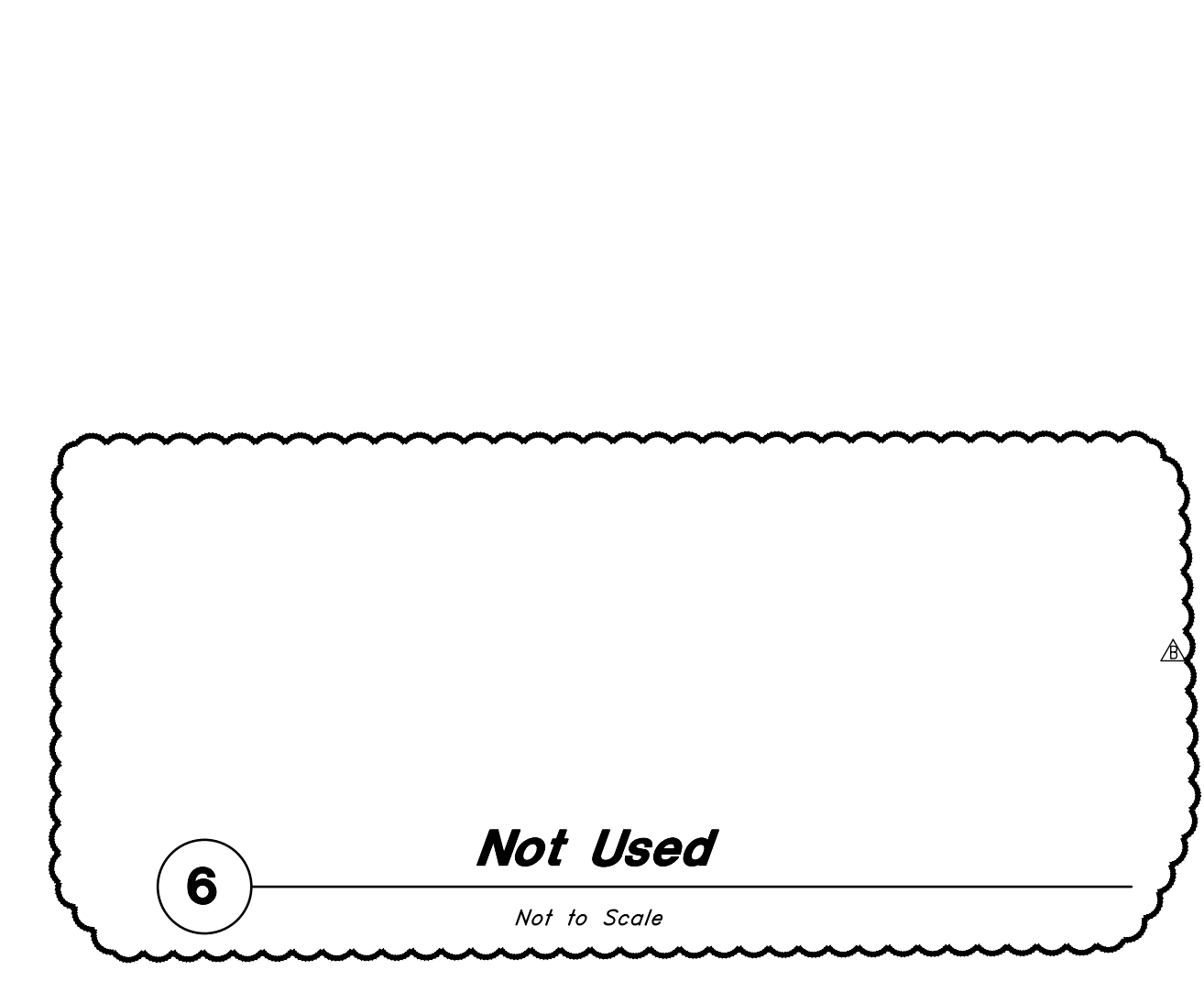
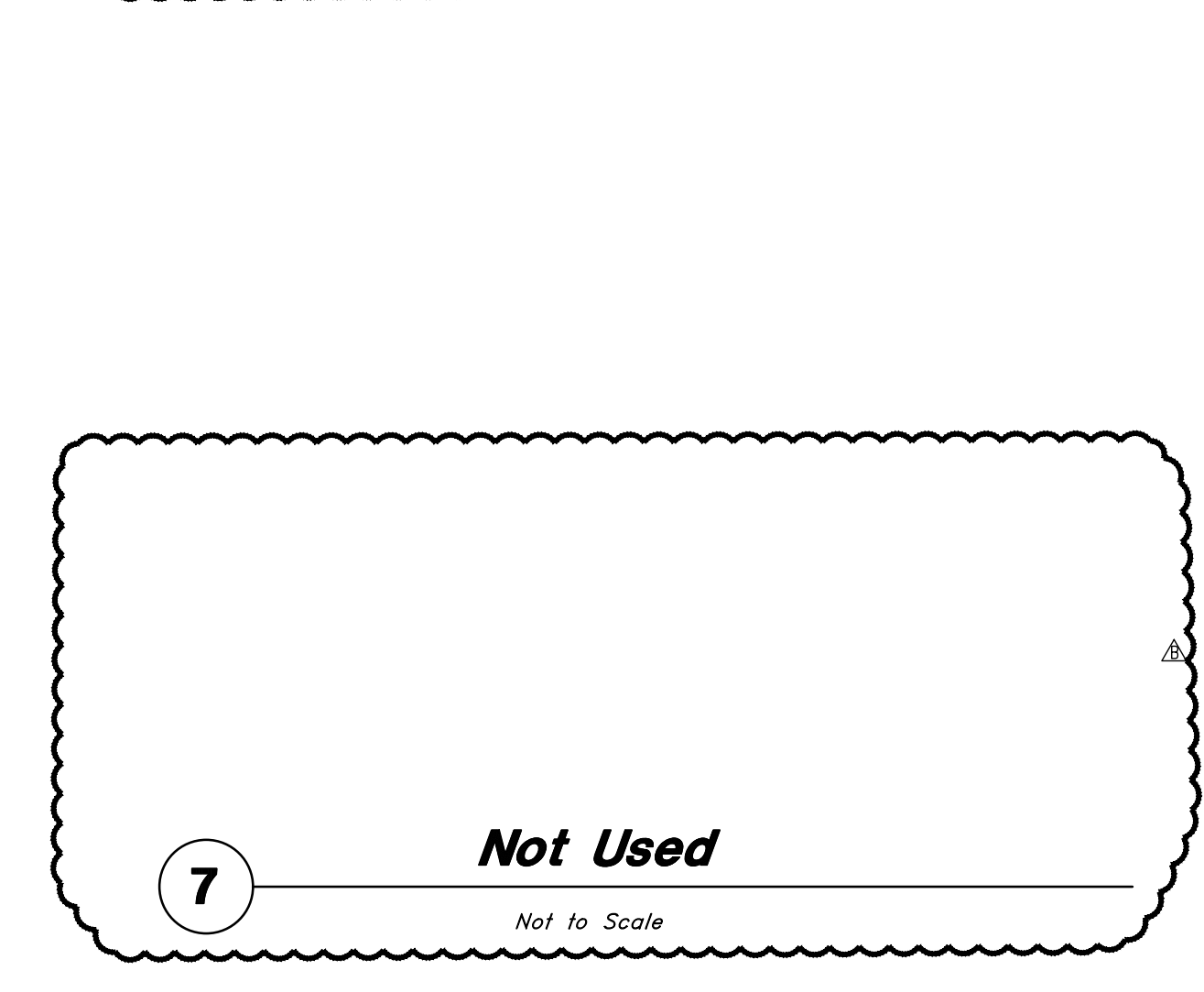
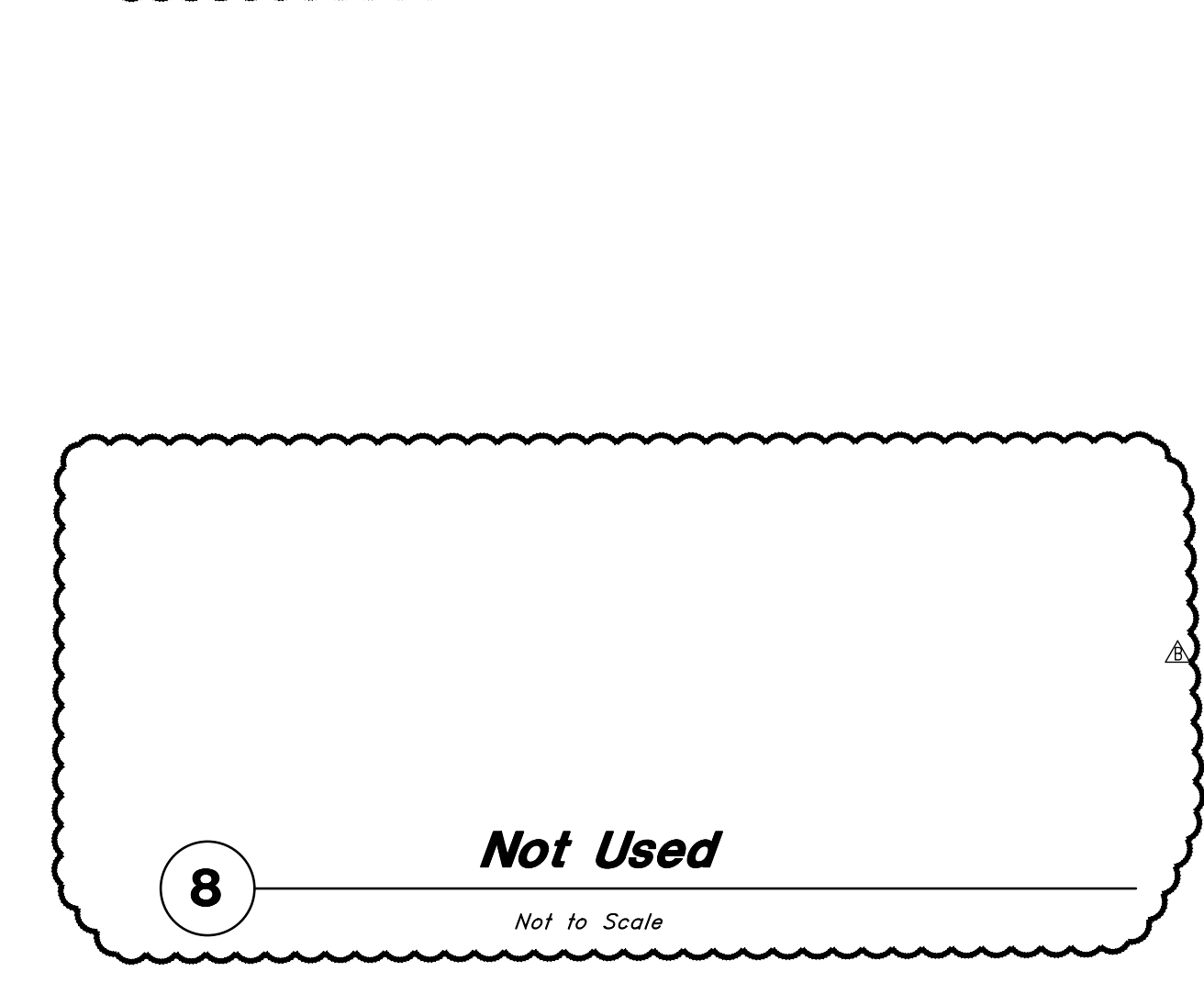
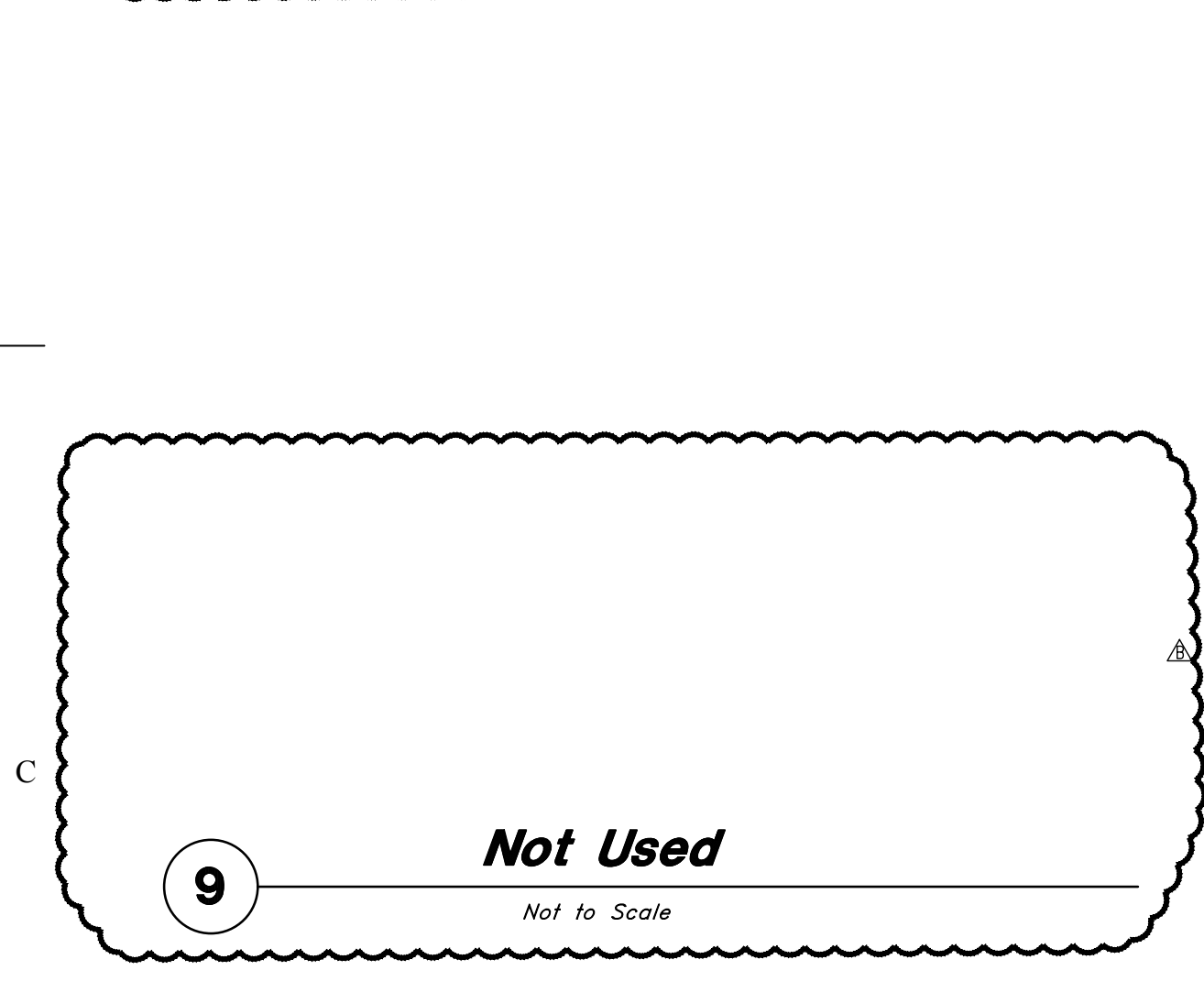
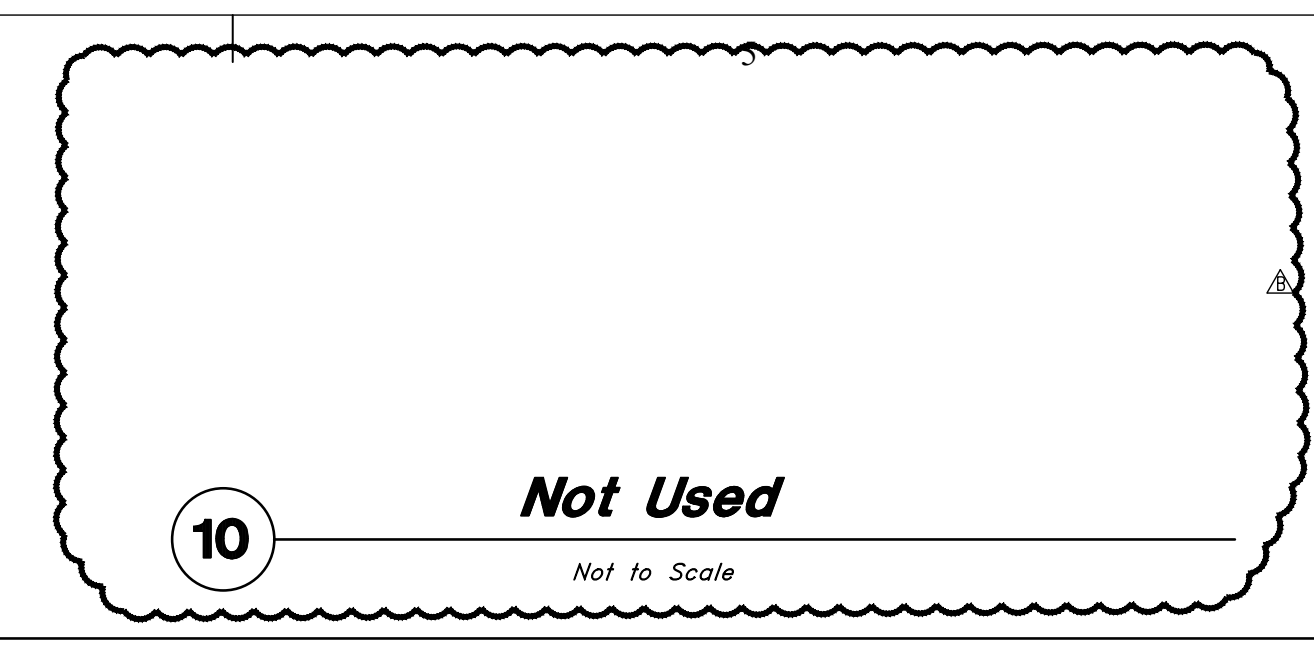
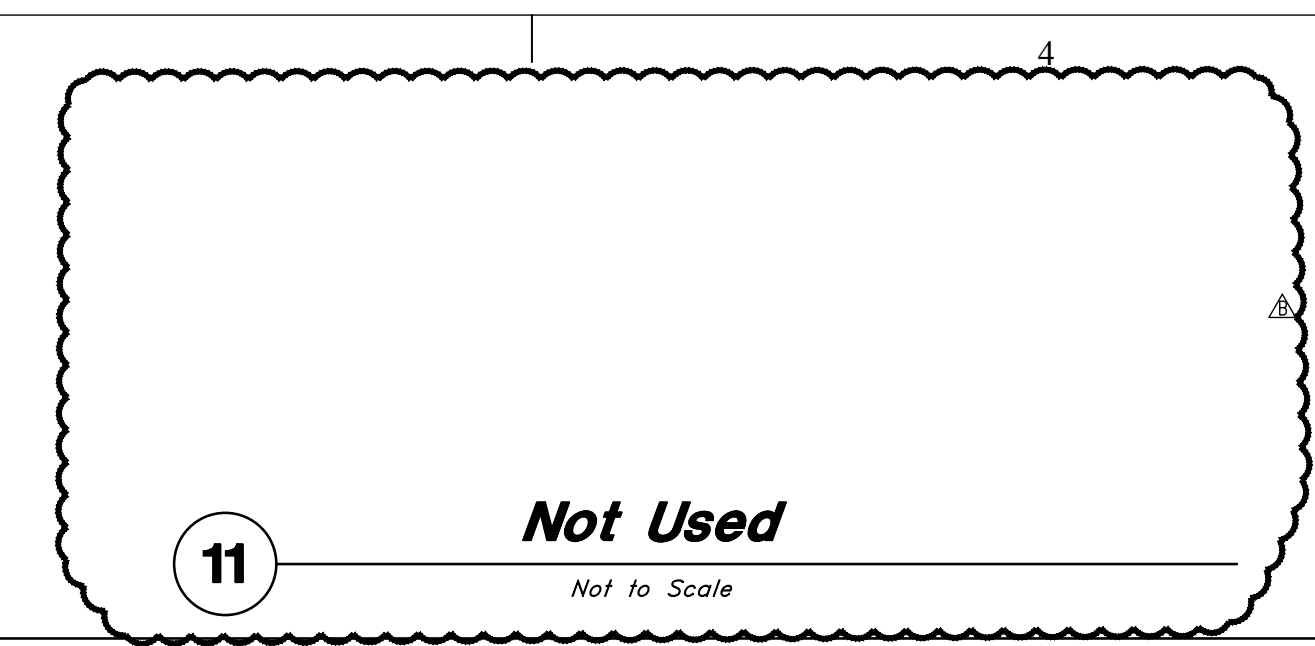
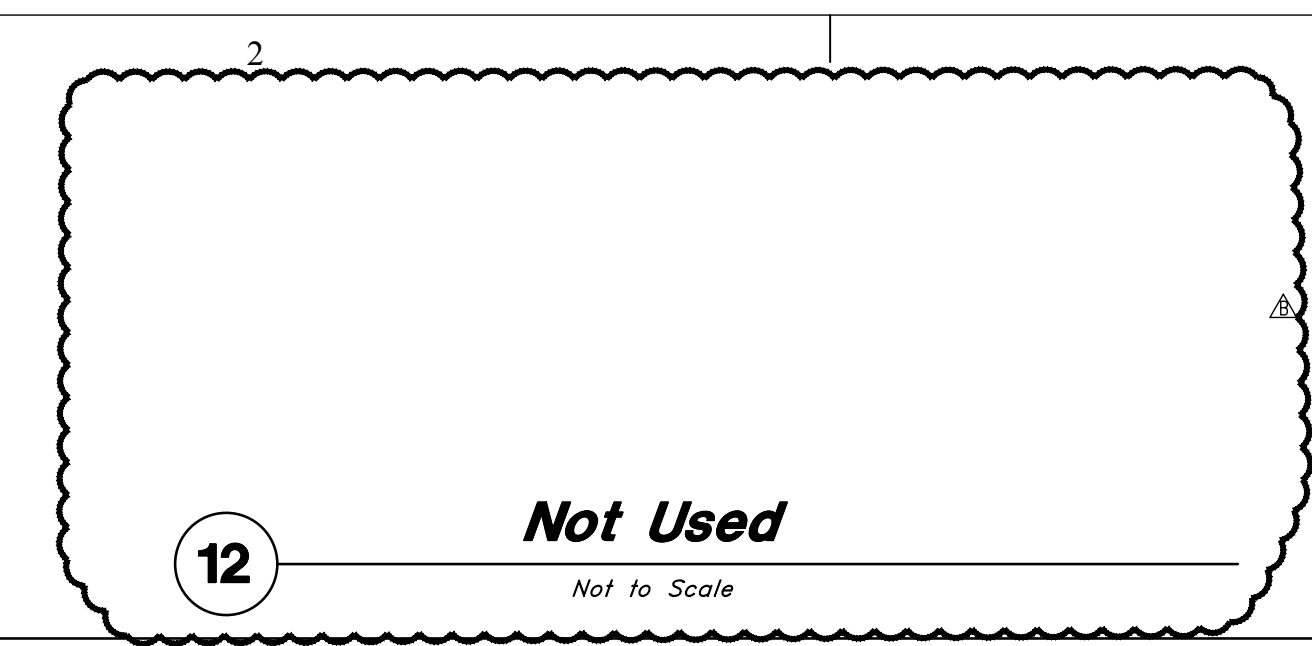
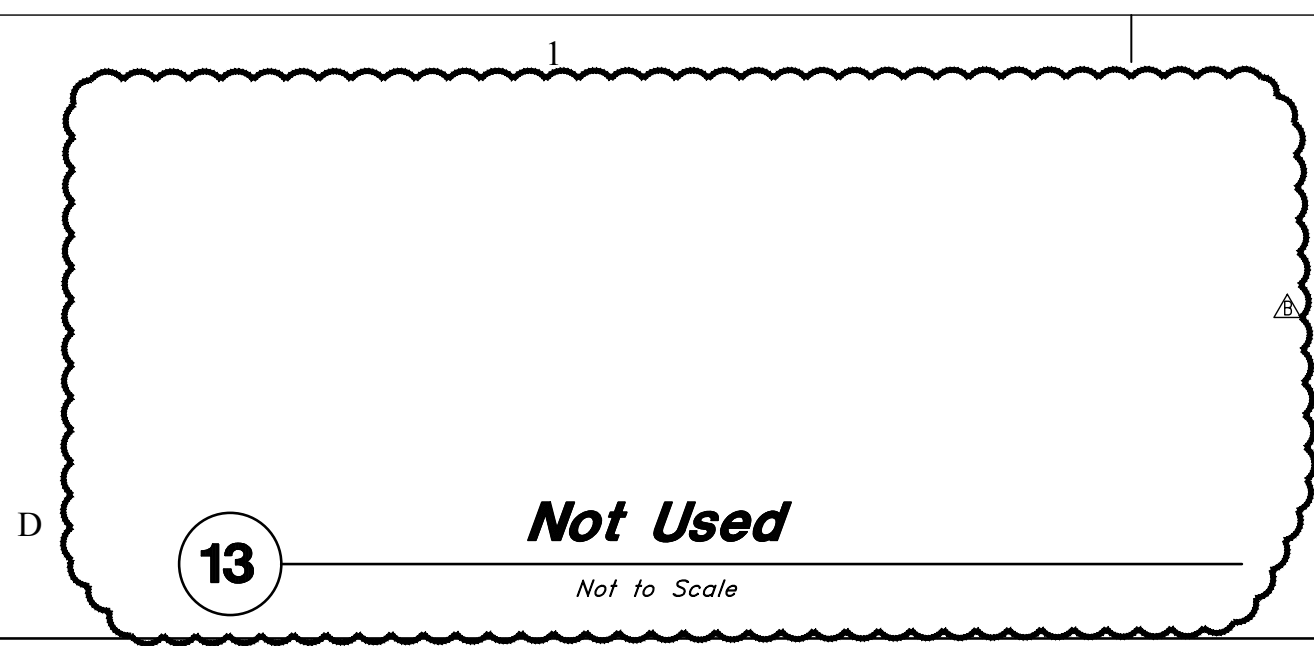
AUG 19, 2016

SHEET TITLE

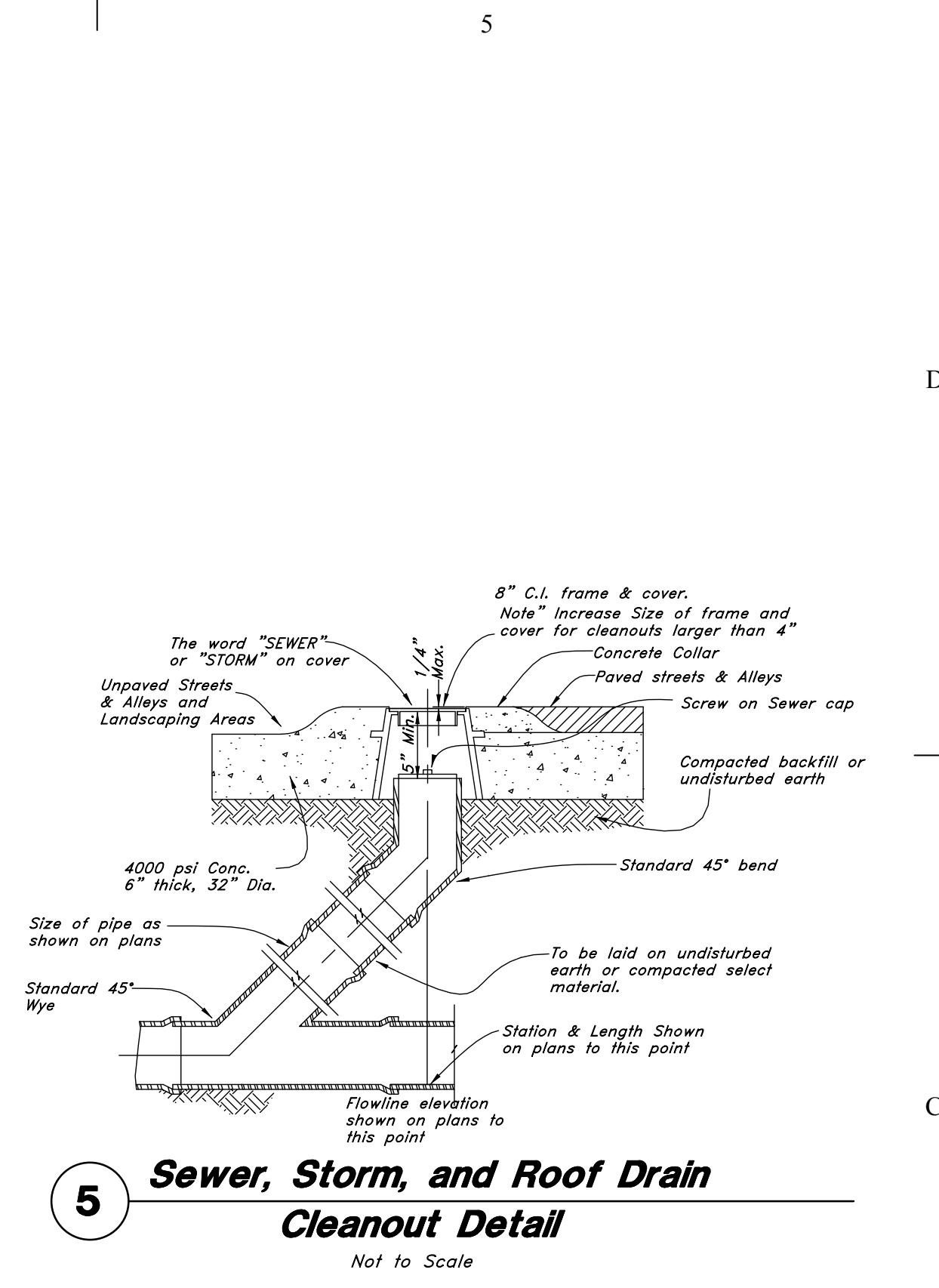
**Construction
Details**

SHEET NO:

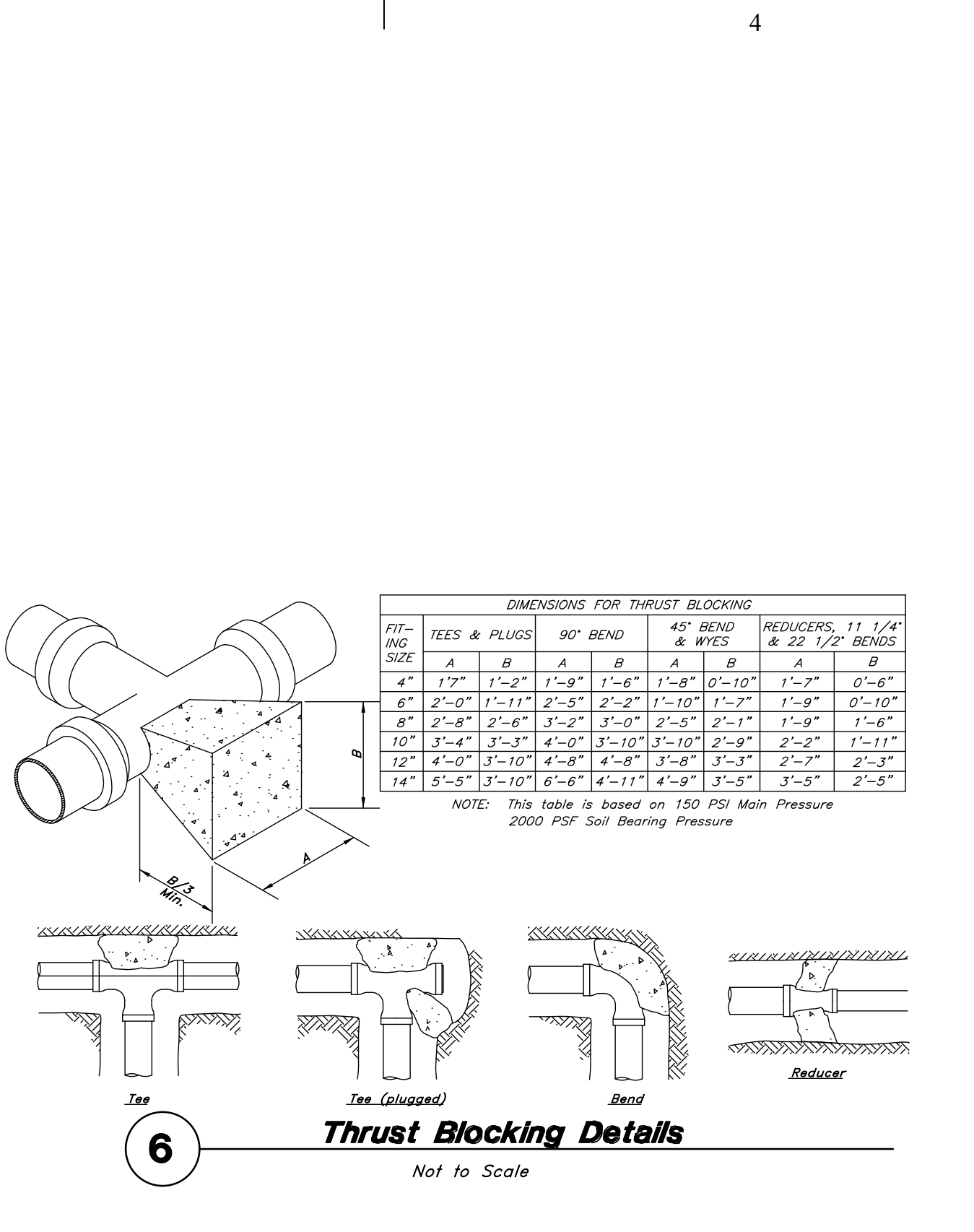
CD501



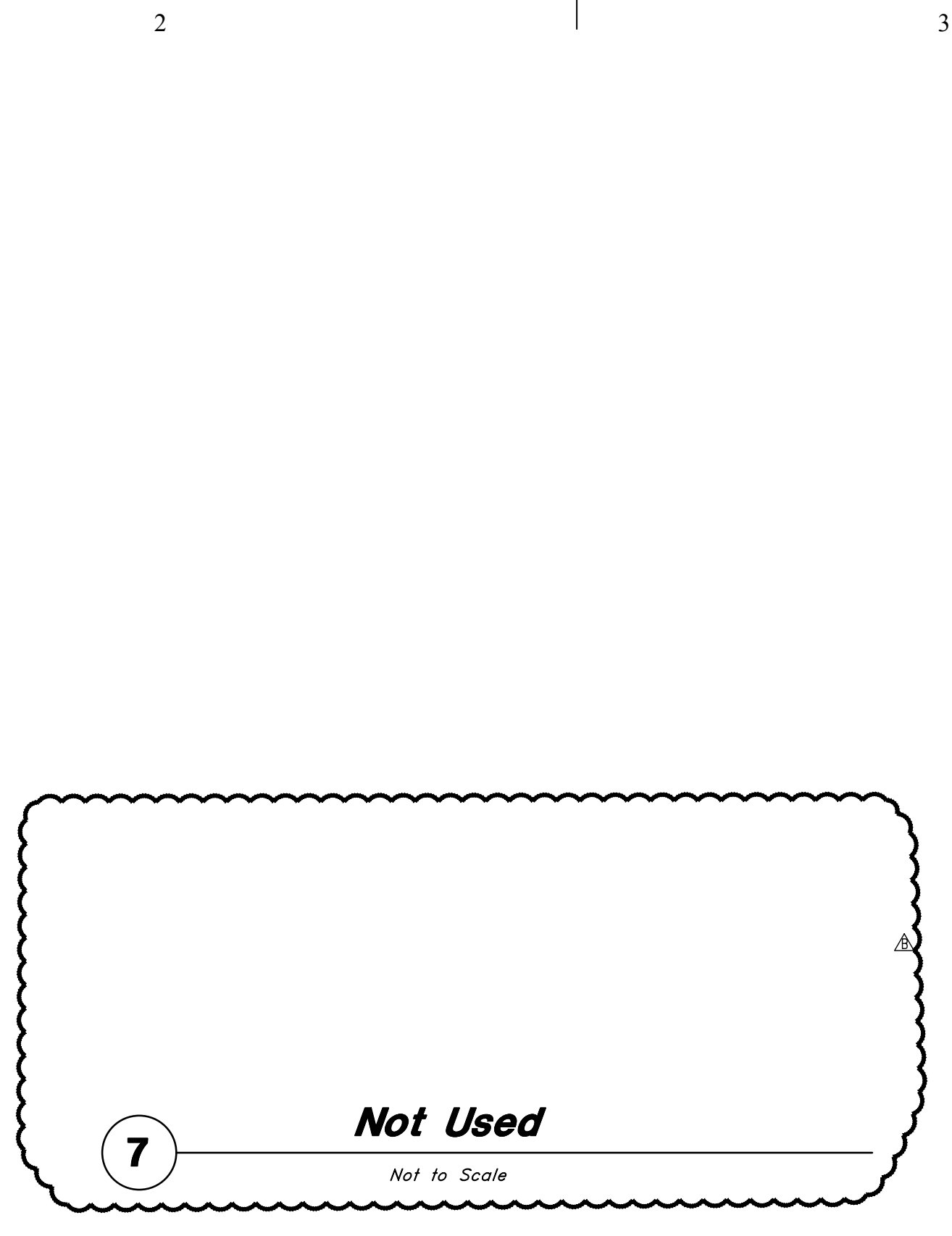
IF SHEET IS LESS THAN 22" x 34"
IT IS A REDUCED PRINT.
REDUCE SCALE ACCORDINGLY



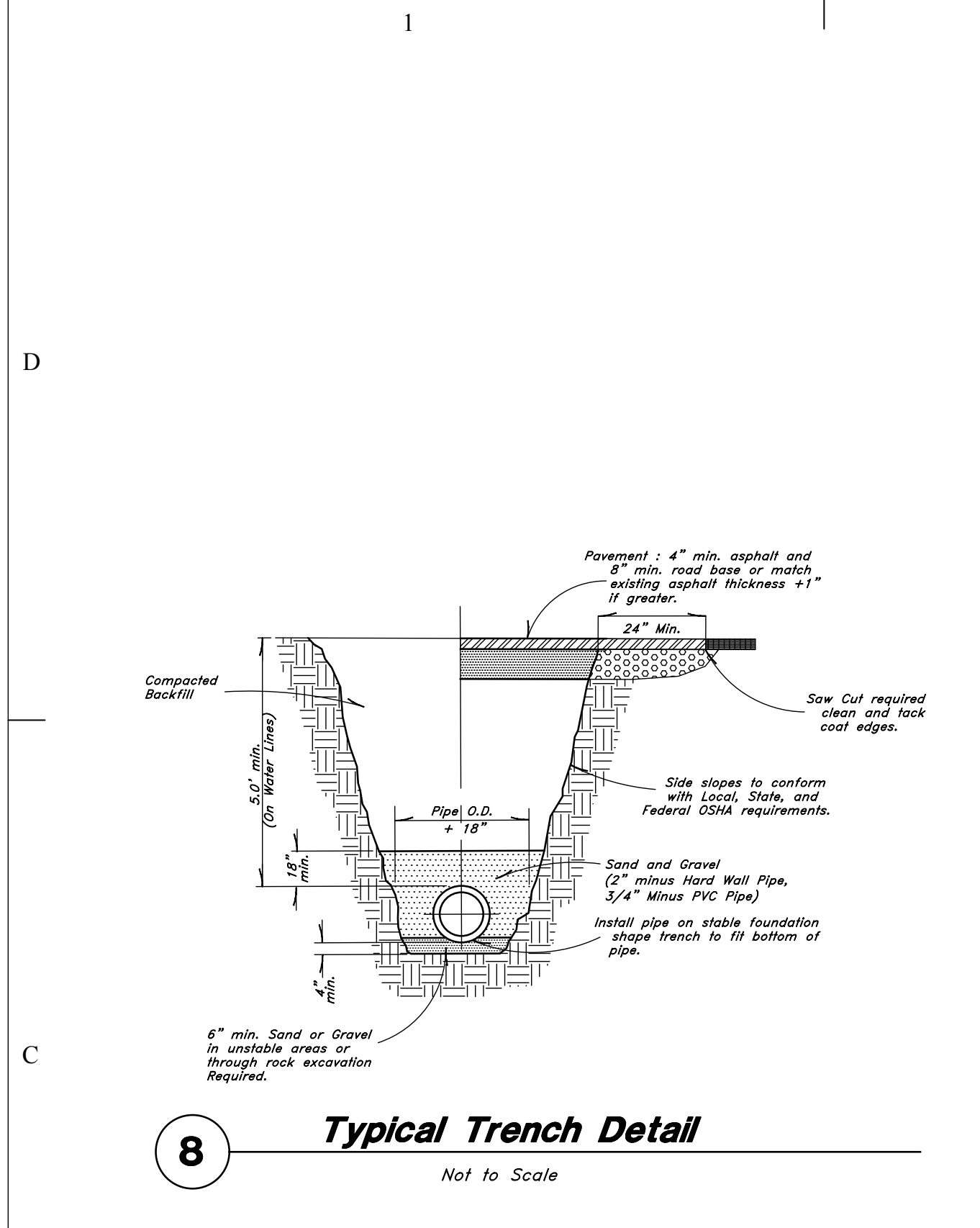
5 Sewer, Storm, and Roof Drain Cleanout Detail
Not to Scale



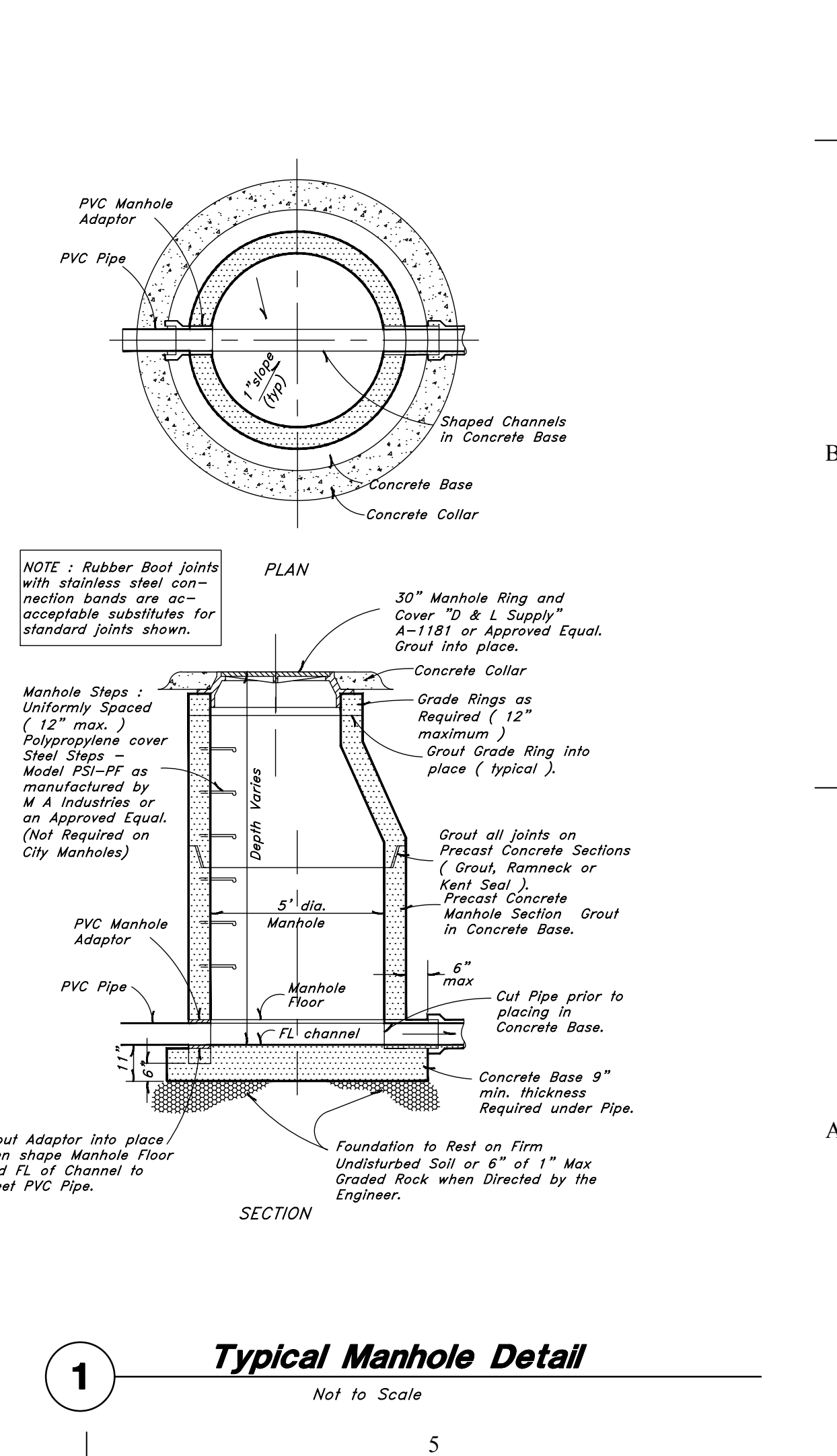
6 Thrust Blocking Details
Not to Scale



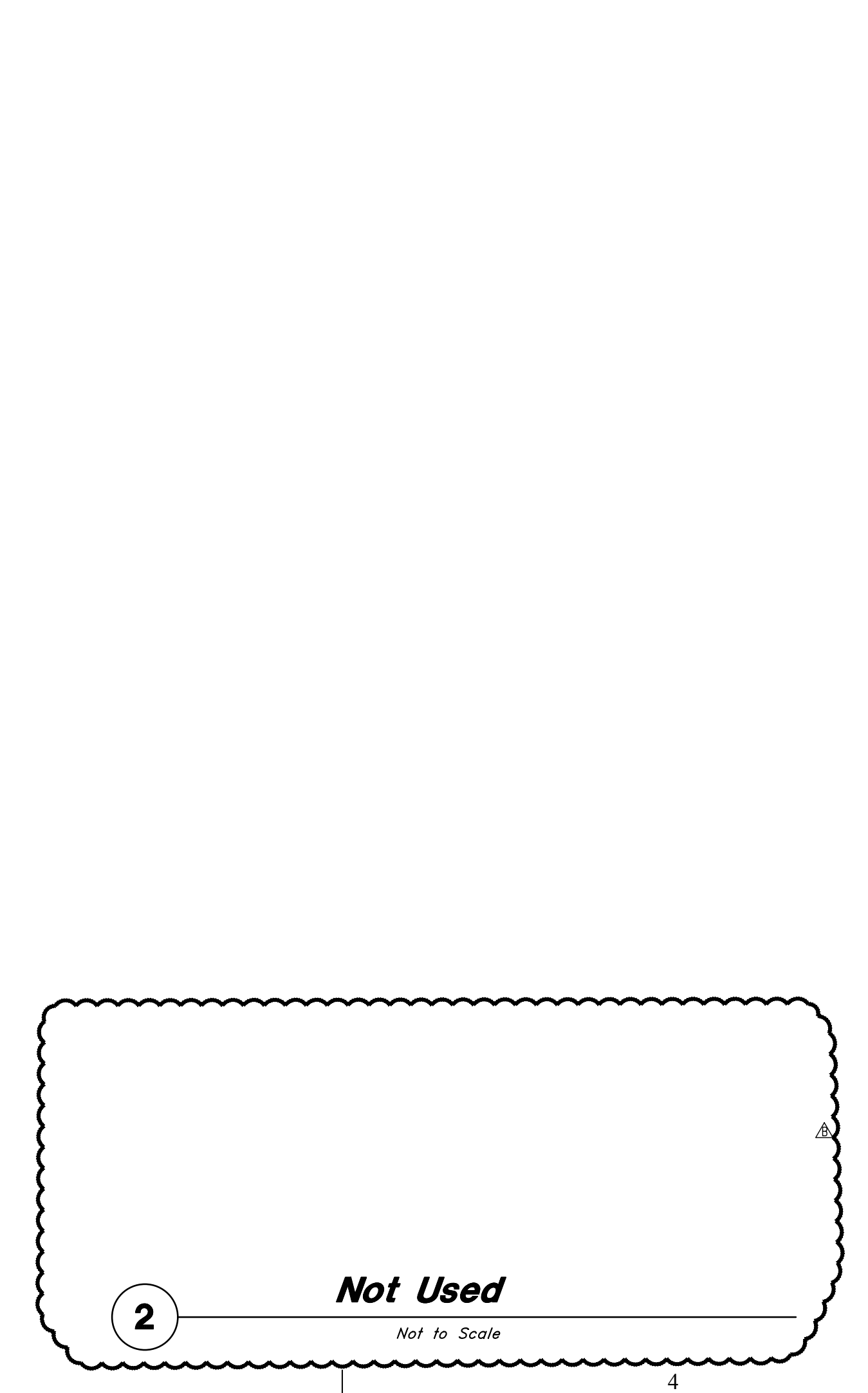
7 Not Used
Not to Scale



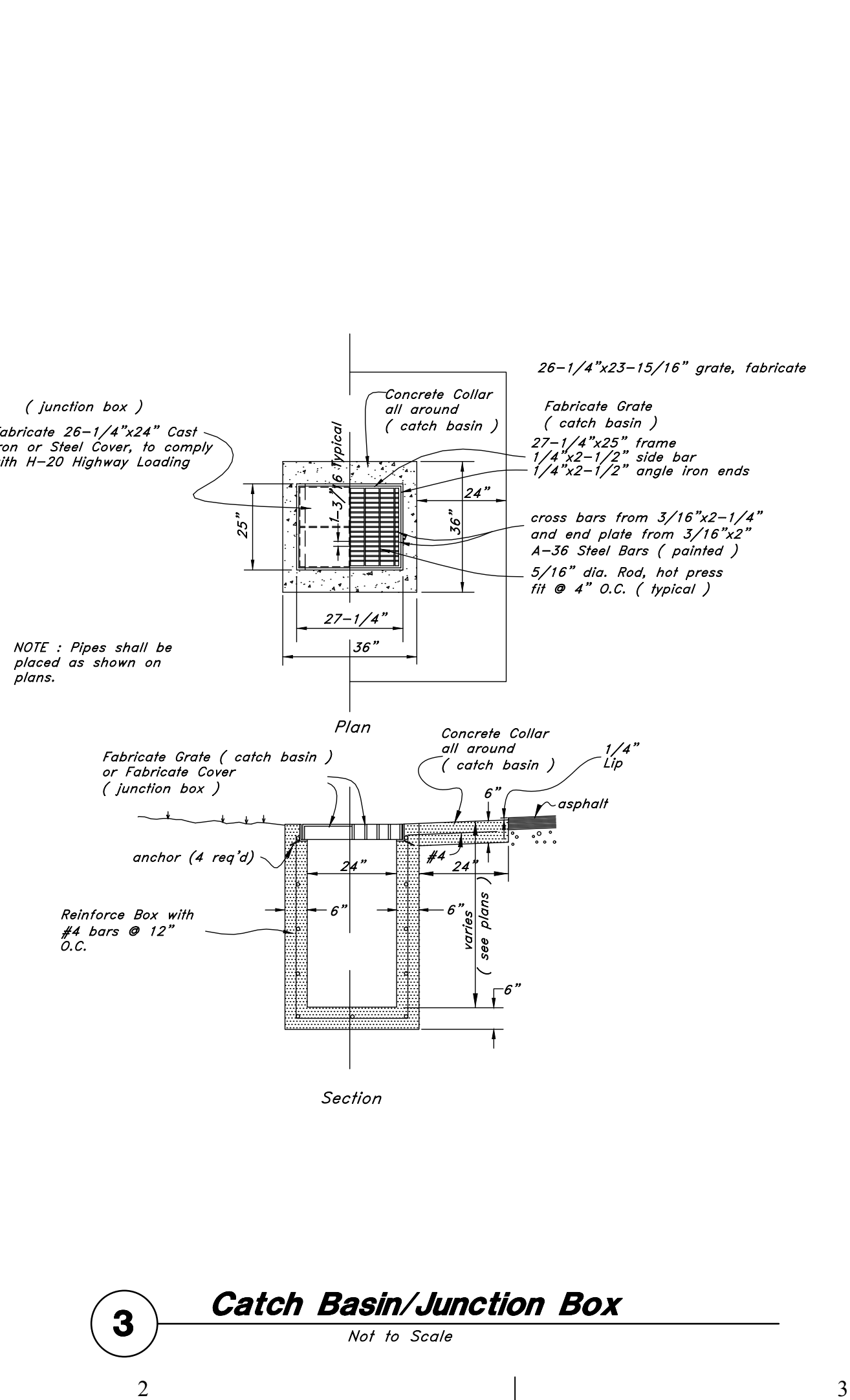
8 Typical Trench Detail
Not to Scale



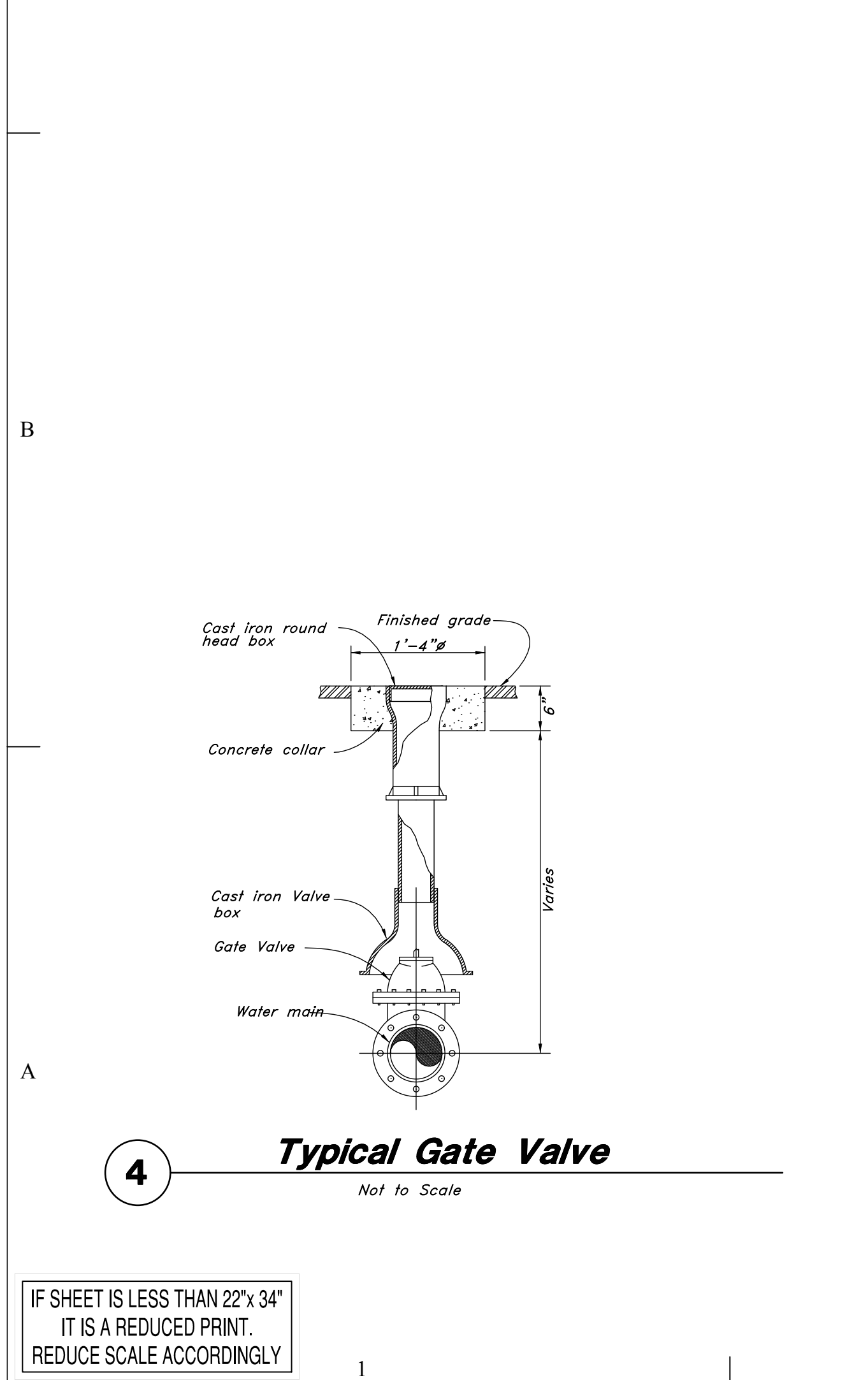
1 Typical Manhole Detail
Not to Scale



2 Not Used
Not to Scale



3 Catch Basin/Junction Box
Not to Scale



4 Typical Gate Valve
Not to Scale

IF SHEET IS LESS THAN 22" x 34"
IT IS A REDUCED PRINT.
REDUCE SCALE ACCORDINGLY



**GRANT TRUCKING
TRUCK
MAINTENANCE SHOP**

910 W 24th STREET
OGDEN, UTAH 84401

MARK	DATE	DESCRIPTION

ISSUE DATE:	AUG 28, 2015
PROJECT NO:	15460
CAD DWG FILE:	
DRAWN BY:	
CHK'D BY:	

PERMIT SET

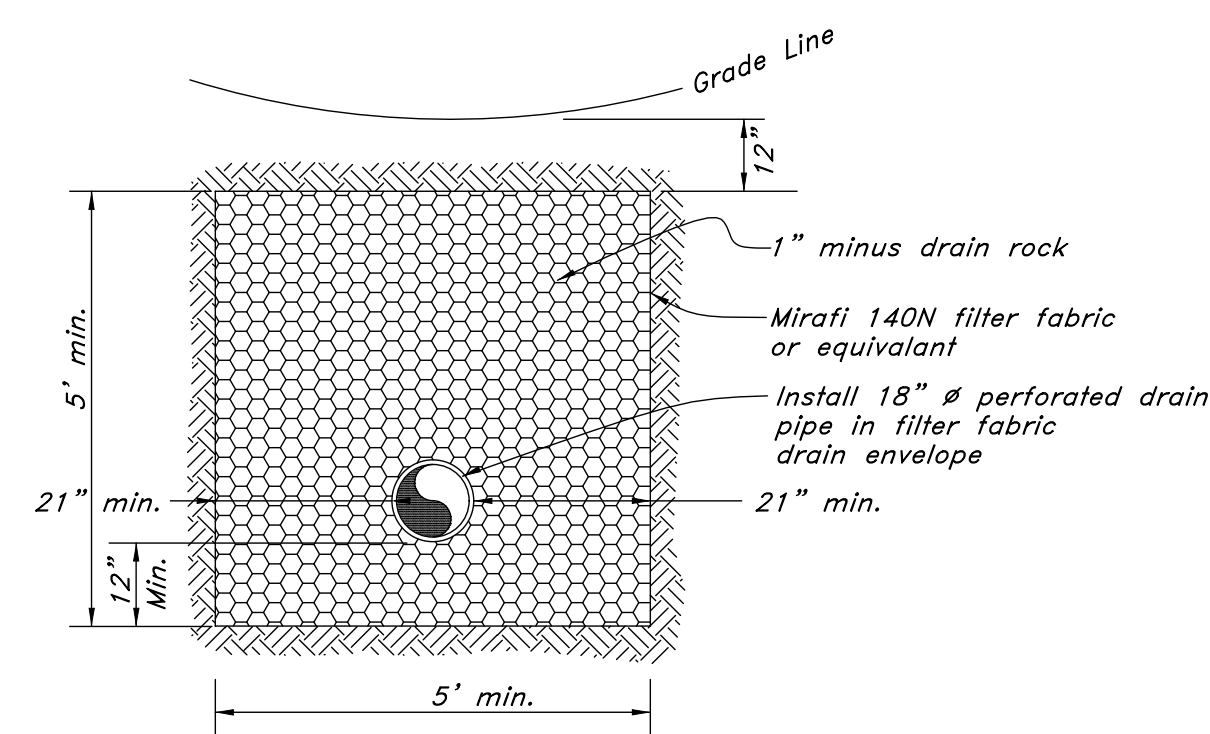
AUG 19, 2016

SHEET TITLE

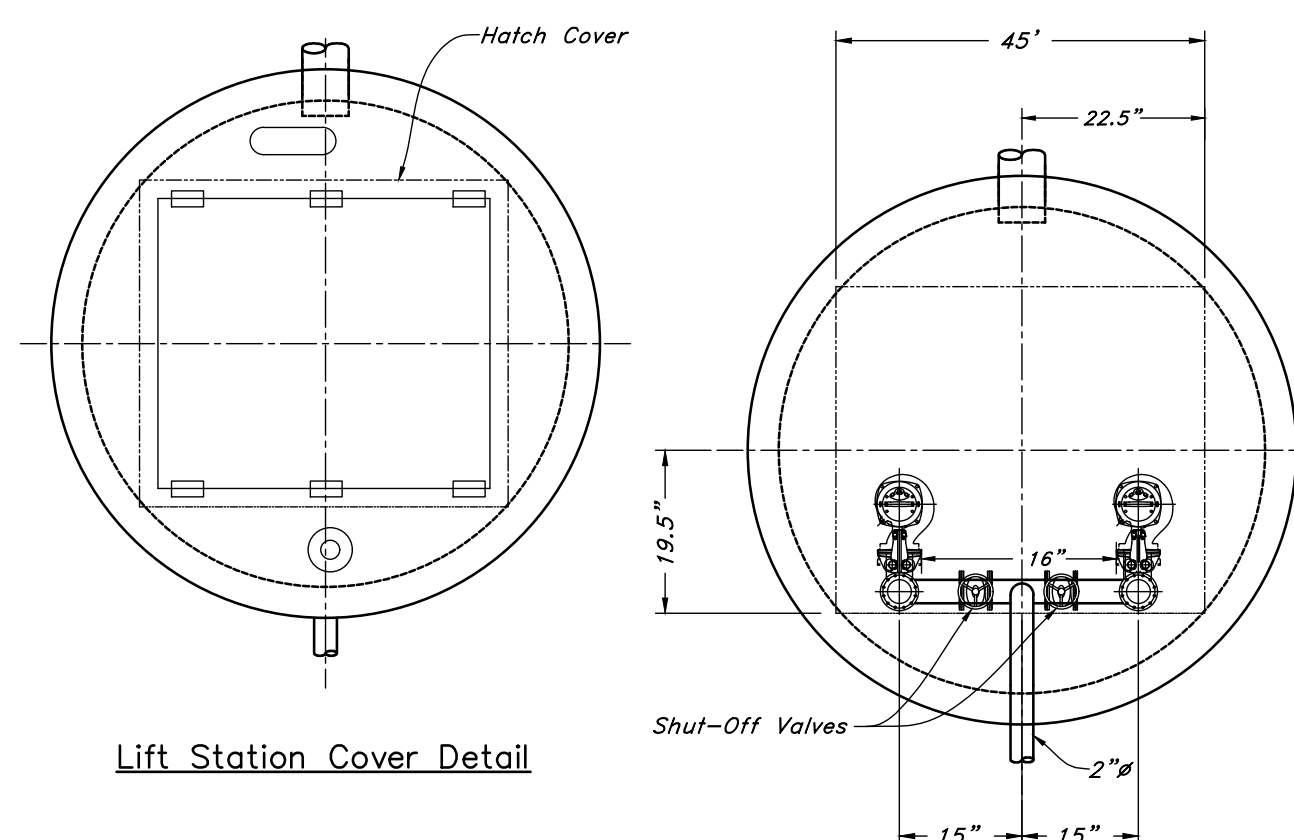
**Construction
Details**

SHEET NO:

CD503



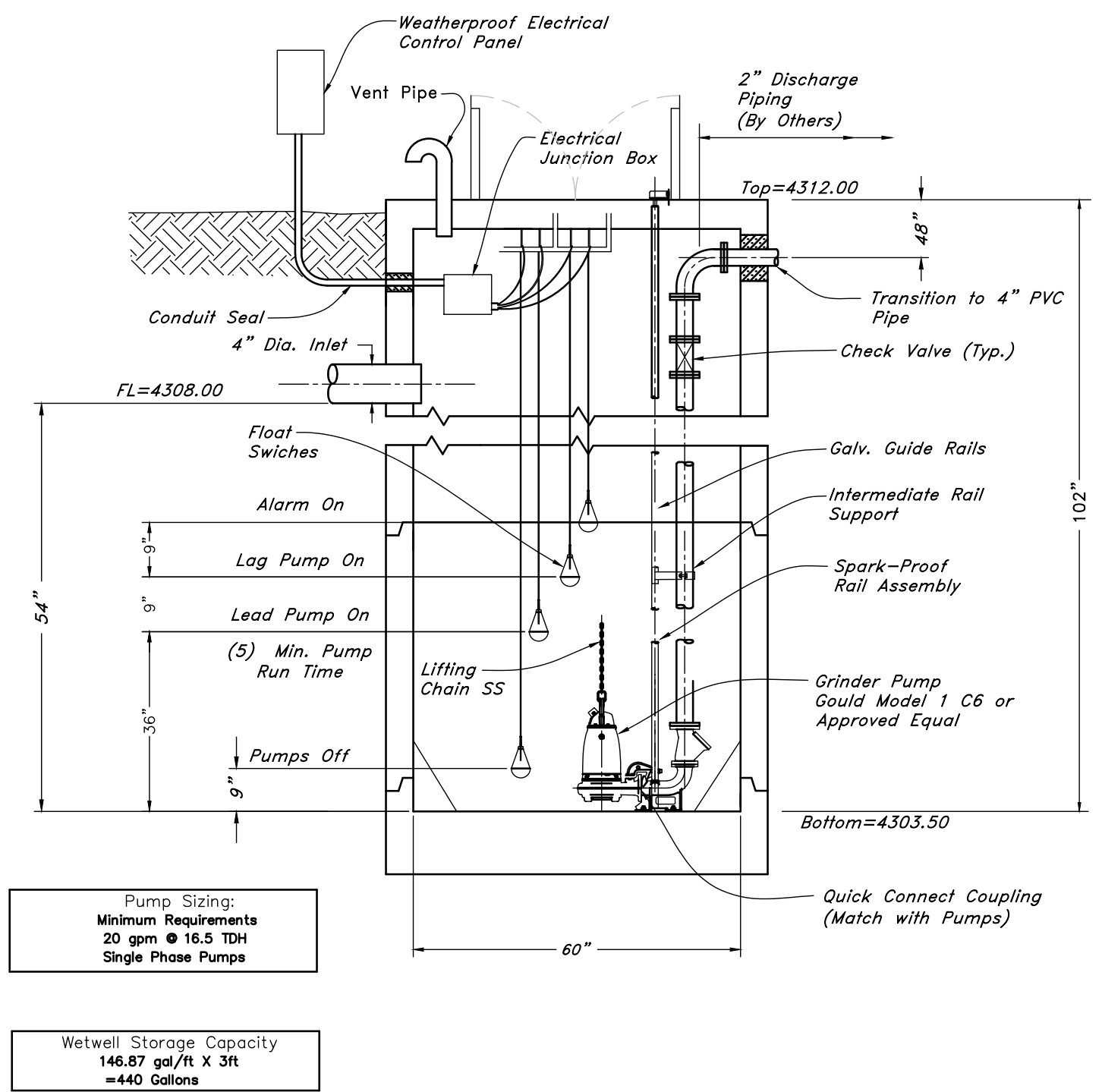
2 Perforated Drain Pipe Detail
Not to Scale



Lift Station Cover Detail

Lift Station Pump Detail

- NOTES:**
- All Tank Piping on the Exterior of the Lift Station is to be Provided and Installed by the Contractor.
 - Electrical Conduit and Wiring from the Junction Box to the Control Panel is to be supplied by the Contractor.
 - The Incoming Power to the Electrical Control Panel is to be furnished by the Customer.
 - Float Location are adjustable by the Owner so that the Owner can modify Run Time of Pumps as well as Alarm Settings. Five (5) Min. Run Time of Pumps is a Minimum to Prevent the Pumps from Overheating.
 - A Portable Hoist can be Supplied w/ Embedded floor socket for pump removal can be supplied as an option.
 - Pump Base with Guide Rails to be Mounted and installed before floor grouting from outside edges inward.
 - Manway size must Accommodate pumps, piping and Rail System for removal of both Pumps.
 - Vent Piping in Concrete to be Supplied and installed by Installation Contractor.
 - All concrete work and wall sleeves are to be installed by the contractor.

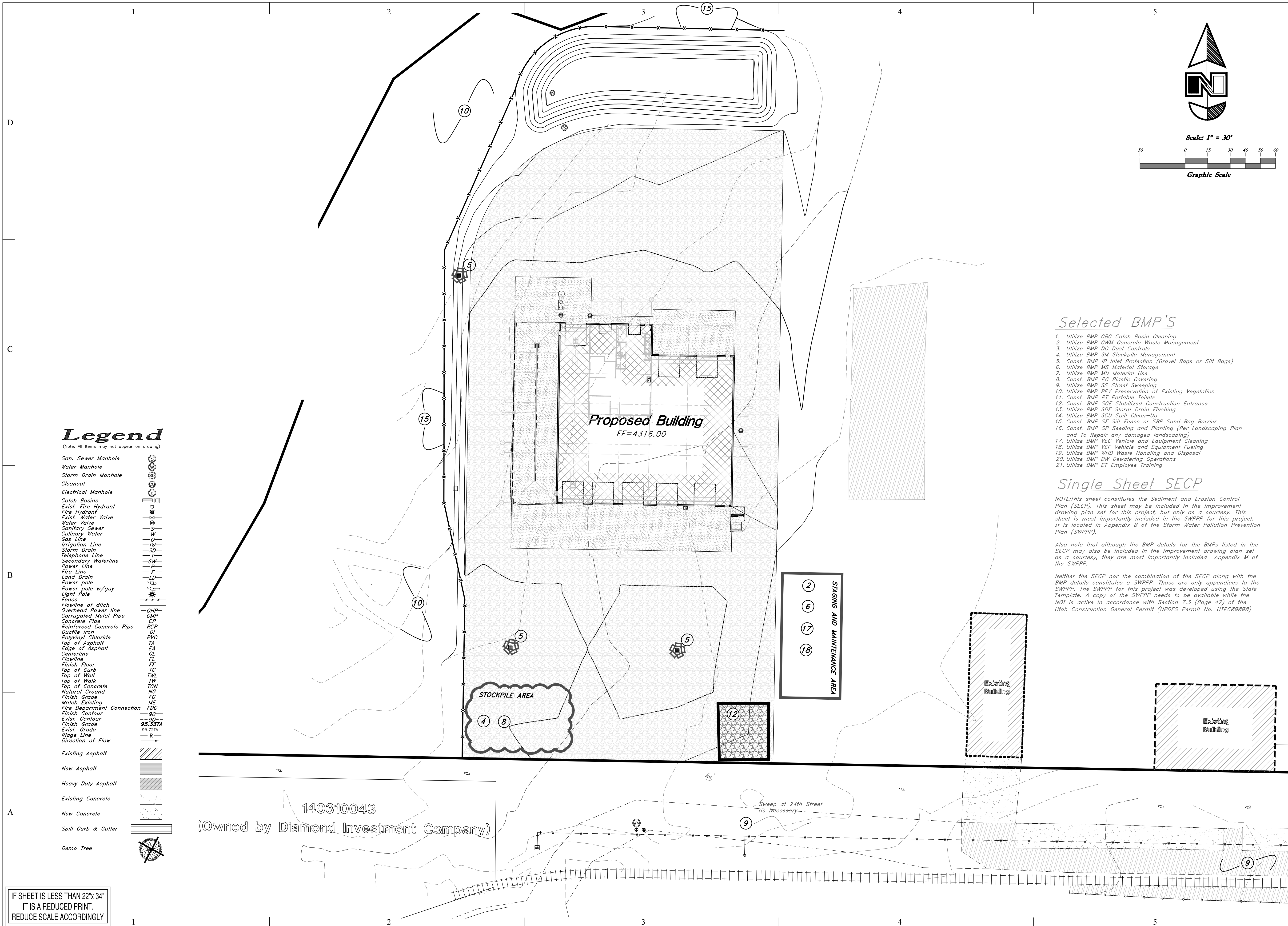


Pump Sizing:
Minimum Requirements
20 gpm @ 16.5 TDH
Single Phase Pumps

Wetwell Storage Capacity
146.87 gal./ft. X 3ft
=440 Gallons

1 Concrete Lift Station Detail
Not to Scale

IF SHEET IS LESS THAN 22" X 34"
IT IS A REDUCED PRINT.
REDUCE SCALE ACCORDINGLY



Legend

(Note: All items may not appear on drawing)

- San. Sewer Manhole
- Water Manhole
- Storm Drain Manhole
- Cleanout
- Electrical Manhole
- Catch Basins
- Exist. Fire Hydrant
- Fire Hydrant
- Exist. Water Valve
- Water Valve
- Sanitary Sewer
- Culinary Water
- Gas Line
- Irrigation Line
- Storm Drain
- Telephone Line
- Secondary Waterline
- Power Line
- Fire Line
- Land Drain
- Power pole
- Power pole w/guy
- Light Pole
- Fence
- Flowline of ditch
- Overhead Power line
- Corrugated Metal Pipe
- Concrete Pipe
- Reinforced Concrete Pipe
- Ductile Iron
- Polyvinyl Chloride
- Top of Asphalt
- Edge of Asphalt
- Centerline
- Flowline
- Finish Floor
- Top of Curb
- Top of Wall
- Top of Walk
- Top of Concrete
- Natural Ground
- Finish Grade
- Match Existing
- Fire Department Connection
- Finish Contour
- Exist. Contour
- Finish Grade
- Exist. Grade
- Ridge Line
- Direction of Flow
- Existing Asphalt
- New Asphalt
- Heavy Duty Asphalt
- Existing Concrete
- New Concrete
- Spill Curb & Gutter
- Demo Tree

Selected BMP'S

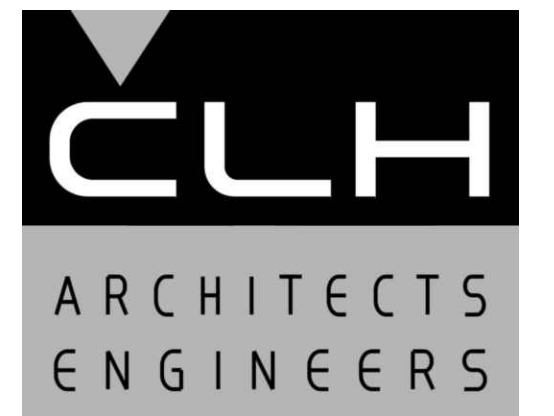
1. Utilize BMP CBC Catch Basin Cleaning
2. Utilize BMP CWM Concrete Waste Management
3. Utilize BMP DC Dust Controls
4. Utilize BMP SM Stockpile Management
5. Const. BMP IP Inlet Protection (Gravel Bags or Silt Bags)
6. Utilize BMP MS Material Storage
7. Utilize BMP MU Material Use
8. Const. BMP PC Plastic Covering
9. Utilize BMP SS Street Sweeping
10. Utilize BMP PEV Preservation of Existing Vegetation
11. Const. BMP PT Portable Toilets
12. Const. BMP SCE Stabilized Construction Entrance
13. Utilize BMP SDF Storm Drain Flushing
14. Utilize BMP SCU Spill Clean-Up
15. Const. BMP SF Silt Fence or SBB Sand Bag Barrier
16. Const. BMP SP Seeding and Planting (Per Landscaping Plan and To Repair any damaged landscaping)
17. Utilize BMP VEC Vehicle and Equipment Cleaning
18. Utilize BMP VEF Vehicle and Equipment Fueling
19. Utilize BMP WHD Waste Handling and Disposal
20. Utilize BMP DW Dewatering Operations
21. Utilize BMP ET Employee Training

Single Sheet SECP

NOTE: This sheet constitutes the Sediment and Erosion Control Plan (SECP). This sheet may be included in the improvement drawing plan set for this project, but only as a courtesy. This sheet is most importantly included in the SWPPP for this project. It is located in Appendix B of the Storm Water Pollution Prevention Plan (SWPPP).

Also note that although the BMP details for the BMPs listed in the SECP may also be included in the improvement drawing plan set as a courtesy, they are most importantly included Appendix M of the SWPPP.

Neither the SECP nor the combination of the SECP along with the BMP details constitutes a SWPPP. Those are only appendices to the SWPPP. The SWPPP for this project was developed using the State Template. A copy of the SWPPP needs to be available while the NOI is active in accordance with Section 7.3 (Page 47) of the Utah Construction General Permit (UPDES Permit No. UTRC000002)



Case, Lowe & Hart, Inc. • 2484 Washington Blvd.
Suite 510 • Ogden, Utah • 84401
801.399.5821 • Fax 801.399.0728 • www.clhae.com

CONSULTANTS

STAMP



**GRANT TRUCKING
TRUCK
MAINTENANCE SHOP**

910 W 24th STREET
OGDEN, UTAH 84401

MARK	DATE	DESCRIPTION

ISSUE DATE:	AUG 28, 2015
PROJECT NO:	15460
CAD DWG FILE:	
DRAWN BY:	
CHK'D BY:	

PERMIT SET
AUG 19, 2016

SHEET TITLE
**Sediment & Erosion
Control Plan**

SHEET NO:
SECP

IF SHEET IS LESS THAN 22" x 34"
IT IS A REDUCED PRINT.
REDUCE SCALE ACCORDINGLY