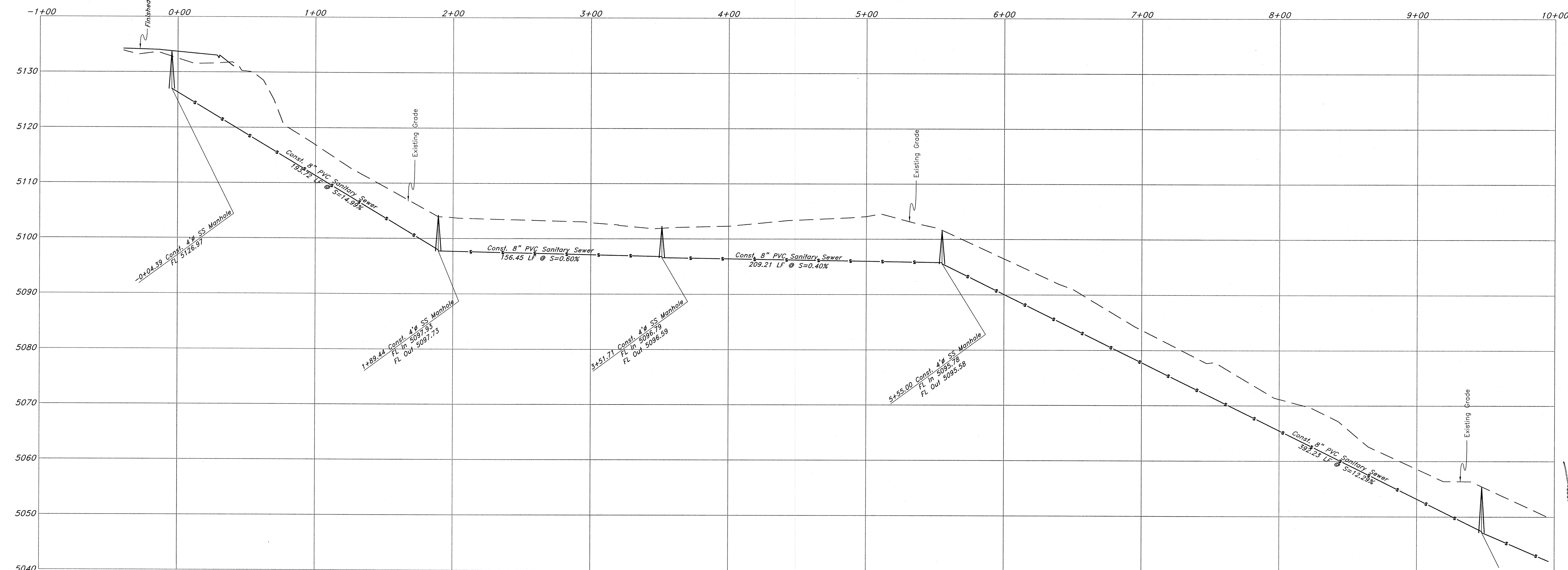
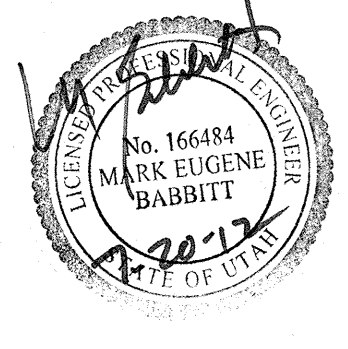


Sewer Outfall



Legend

- (Note: All items may not appear on drawing)
- San. Sewer Manhole
 - Water Manhole
 - Storm Drain Manhole
 - Electrical Manhole
 - Catch Basins
 - Exist. Fire Hydrant
 - Fire Hydrant
 - Exist. Water Valve
 - Water Valve
 - Sanitary Sewer
 - Culinary Water
 - Gas Line
 - Irrigation Line
 - Storm Drain
 - Telephone Line
 - Secondary Waterline
 - Power Line
 - Fire Line
 - Land Drain
 - Power pole w/guy
 - Light Pole
 - Fence
 - Flowline of ditch
 - Overhead Power line
 - Corrugated Metal Pipe
 - Concrete Pipe
 - Reinforced Concrete Pipe
 - Ductile Iron
 - Polyvinyl Chloride
 - Top of Asphalt
 - EA
 - CL
 - FF
 - Flowline
 - Finish Floor
 - Top of Curb
 - Top of Wall
 - Top of Concrete
 - Top of Walk
 - Finish Contour
 - Natural Ground
 - Exist. Contour
 - Finish Grade
 - Exist. Grade
 - Ridge Line
 - Direction of Flow
 - Existing Asphalt
 - New Asphalt
 - Heavy Duty Asphalt
 - Concrete
 - Open Face
 - Curb & Gutter



Plan and Profile

The Chalets at Ski Lake Phase 5 - Sewer Outfall
 A part of the Southwest 1/4 of Section 13, a part of the Northeast 1/4 of Section 23, and a part of the Northwest 1/4 of Section 24, T6N, R1E, SLB&M, U.S. Survey

GREAT BASIN ENGINEERING NORTH
 CONSULTING ENGINEERS AND SURVEYORS
 5746 South 1475 East - Suite 200
 Ogden, Utah 84403
 P.O. Box 150048, Ogden, Utah 84415
 Ogden (801)394-4315 Salt Lake City (801)521-0222 Fax (801)392-7544

SCALE : 1" = 40'
 DRAWN : RB
 96N120 PH 5 S3

DATE : 20 July, 2012
 REVISIONS :

DRWG. NO. 1
 2