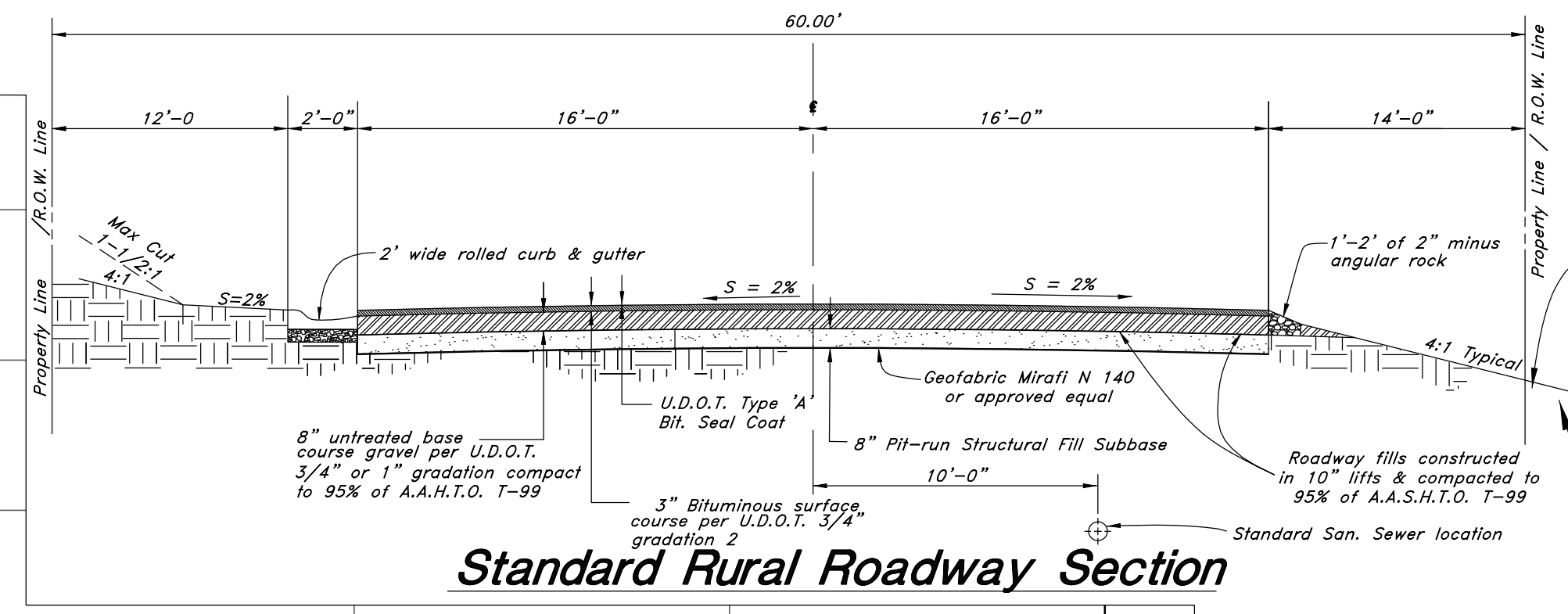
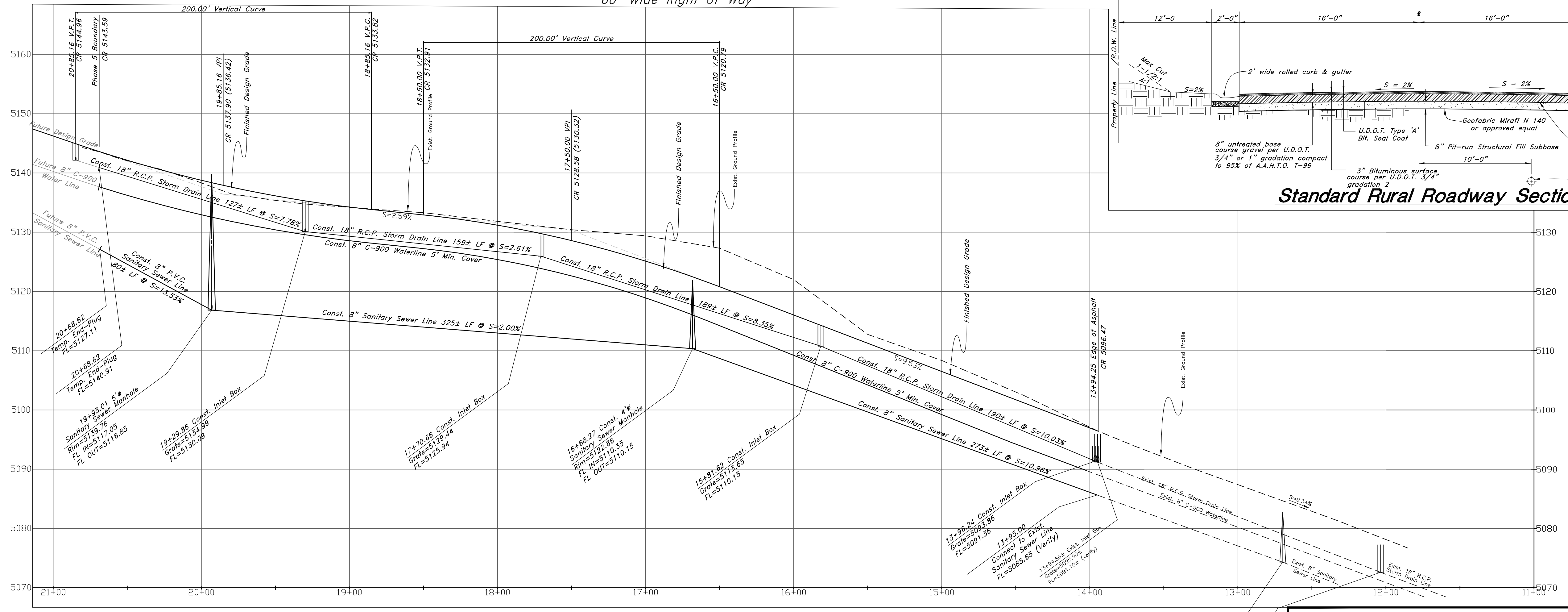


Quail Lane
60' Wide Right of Way



Shoulders are 4" minus crushed rock, voids to be filled with road base.
When fill exceeds 3.5' at shoulder, fill slope may be steepened to a Max. slope of 2:1

Legend

- (Note: All items may not appear on drawing)
- San. Sewer Manhole
 - Water Manhole
 - Storm Drain Manhole
 - Electrical Manhole
 - Catch Basins
 - Exist. Fire Hydrant
 - Exist. Water Valve
 - Sanitary Sewer Water Valve
 - Culinary Water
 - Gas Line
 - Irrigation Line
 - Storm Drain
 - Telephone Line
 - Secondary Waterline
 - Power Line
 - Fire Line
 - LD
 - Land Drain
 - Power pole w/guy
 - Light Pole
 - Fence
 - Flowline of ditch
 - Overhead Power line
 - Corrugated Metal Pipe
 - Concrete Pipe
 - RCP
 - DI
 - Reinforced Concrete Pipe
 - Ductile Iron
 - Polyvinyl Chloride
 - Top of Asphalt
 - Edge of Asphalt
 - Centerline
 - Flowline
 - Finish Floor
 - Top of Curb
 - Top of Wall
 - Top of Walk
 - Top of Concrete
 - Natural Ground
 - Finish Contour
 - Exist. Contour
 - Finish Grade
 - Exist. Grade
 - Ridge Line
 - Direction of Flow
 - Existing Asphalt
 - New Asphalt
 - Heavy Duty Asphalt
 - Concrete
 - Open Face Curb & Gutter

Plan and Profile		The Chalets at Ski Lake Phase 5	
A part of the Southwest 1/4 of Section 13, a part of the Northeast 1/4 of Section 23, and a part of the Northwest 1/4 of Section 24, T6N, R1E, SLB&M, U.S. Survey.			
<p>GREAT BASIN ENGINEERING NORTH CONSULTING ENGINEERS AND SURVEYORS 5746 South 1475 East - Suite 200 Ogden, Utah 84403 P.O. Box 150048, Ogden, Utah 84415 Ogden (801)394-4515 Salt Lake City (801)221-0222 Fax (801)392-7544</p>	SCALE: 1" = 40'	DATE: 24 Jun, 2009	DRWG. NO.
	DRAWN: MRK	REVISIONS: 2 Nov, 2011	
96N120 PH 5			1 of 6