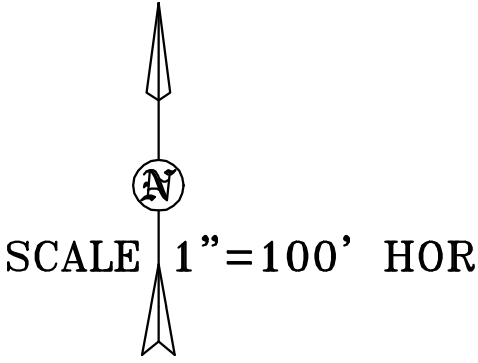


VICINITY MAP

PROPOSED GRAVEL PIT
PART OF THE NORTH WEST QUARTER OF SECTION 19
TOWNSHIP 6 NORTH RANGE 3 WEST
SALT LAKE BASE AND MERIDIAN
WEBER COUNTY, UTAH
EROSION/DUST CONTROL PLAN



LEGEND	
	BOUNDARY LINE
	STREET CENTERLINE
	EXISTING CONTOUR (2')
	EXISTING CONTOUR (10')
	PROPOSED CONTOUR (2')
	PROPOSED CONTOUR (10')

STORM DRAINAGE CONTROL
SPECIFICATIONS

UPDES PERMIT TO BE OBTAINED BEFORE EXCAVATION BEGINS

EROSION AND SEDIMENT CONTROLS MEASURES

STABILIZATION PRACTICES

1. REVEGATE AREAS WHERE LANDSCAPING HAS DIED.

STRUCTURAL PRACTICES

1. PROVIDE STRAW BERMS OR SILT FENCES BEFORE STORM EVENTS TO PREVENT SILTS FROM ENTERING EXISTING DRAINAGE WAYS.
 2. STOCKPILE TOPSOILS AS TO NOT OBSTRUCT CONSTRUCTION OPERATIONS. IF EROSION IS OBSERVED PROVIDE SILT FENCE AROUND STOCKPILES.
 3. THE CONTRACTOR SHALL PROVIDE DUST CONTROL PROCEDURES.
- NON-STORM WATER DISCHARGES
4. PROVIDE SILT FENCES AROUND THE EXISTING CULVERTS AND AT THE EAST END OF THE PROPERTY.

OTHER CONTROLS

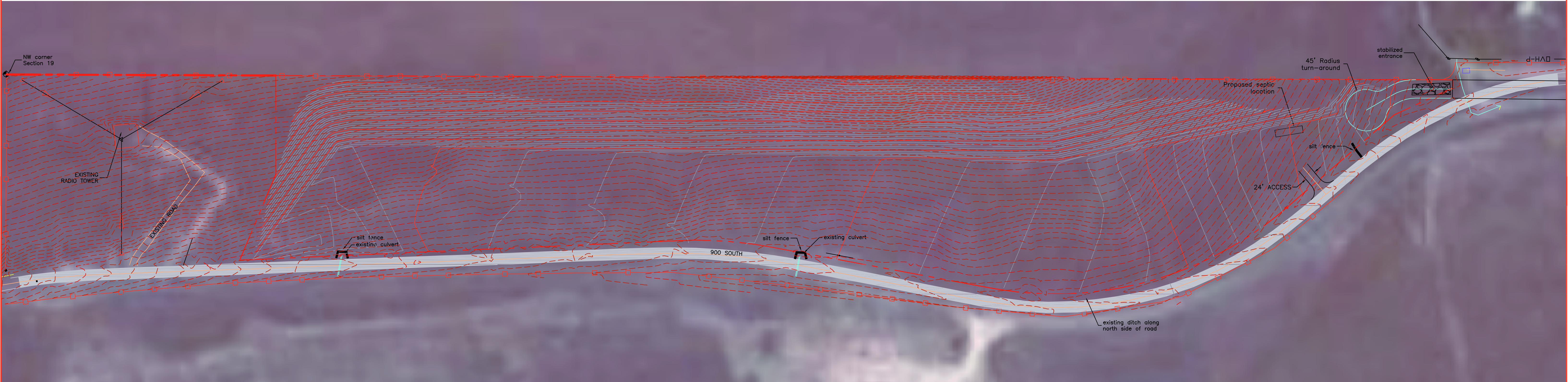
1. DO NOT DISPOSE OF WASHOUT FROM THE WASHING OF CONCRETE TRUCKS, MIXERS, AND HANDLING EQUIPMENT WHERE IT WILL FLOW INTO A WATER INLET OR INTO A PUBLIC STREET.
2. SANITARY DISPOSAL
PORTABLE TOILETS SHALL BE SERVICED WEEKLY AND PUMPED CLEAN BY A WASTE DISPOSAL COMPANY.
3. PROVIDE WEEKLY SWEEPING TO KEEP PAVED AREAS OF THE SITE FREE OF DUST, DIRT, AND DEBRIS. ANY DEBRIS TRACKED ONTO THE ROAD SURFACE SHALL BE CLEANED IMMEDIATELY.
4. KEEP WASTE DISPOSAL CONTAINERS COVERED. PROVIDE FOR WEEKLY DISPOSAL OF WASTE CONTAINERS OR AS NEEDED.
5. AVOID OVER WATERING OF LANDSCAPED AREAS.
6. LIMIT THE APPLICATION OF FERTILIZERS TO THE MINIMUM AREA AND THE MINIMUM RECOMMENDED AMOUNTS.
7. DISPOSE OF CONTAMINATED MATERIALS ACCORDING TO MANUFACTURES INSTRUCTIONS OR ACCORDING TO STATE OR LOCAL REQUIREMENTS. STORE ABSORBENT MATERIAL, RAGS, BROOMS, SHOVELS AND WASTE CONTAINERS ON THE SITE TO CLEAN-UP SPILLS. CLEAN UP SPILLS IMMEDIATELEY.
8. CONSTRUCTION PRODUCTS (ESPECIALLY GRAVEL & SOIL) SHALL NOT BE PLACED IN CITY RIGHT-OF-WAY.
9. A STABILIZED (ROCK, ETC..) ENTRANCE SHALL BE PROVIDED TO LIMIT THE TRACKING OF MATERIAL OFF THE PROPERTY.

MAINTENANCE/INSPECTION PROCEDURES

1. ALL CONTROL MEASURES WILL BE INSPECTED AT LEAST ONCE A WEEK OR FOLLOWING ANY STORM EVENT.
2. ALL MEASURES WILL BE MAINTAINED IN GOOD WORKING ORDER; IF REPAIR IS NECESSARY, IT WILL BE INITIATED WITHIN 24 HOURS OF REPORT.
3. PERMANENT SEEDING AND PLANTING WILL BE INSPECTED FOR BARE SPOTS, WASHOUTS, AND HEALTHY GROWTH.

DUST CONTROL

1. A WATER TRUCK WILL BE AVAILABLE AND USED TO CONTROL DUST CAUSED BY CONSTRUCTION.



ALLIANCE CONSULTING
ENGINEERS

88 WEST CENTER STREET
LOGAN, UTAH 84321
(435) 755-5121