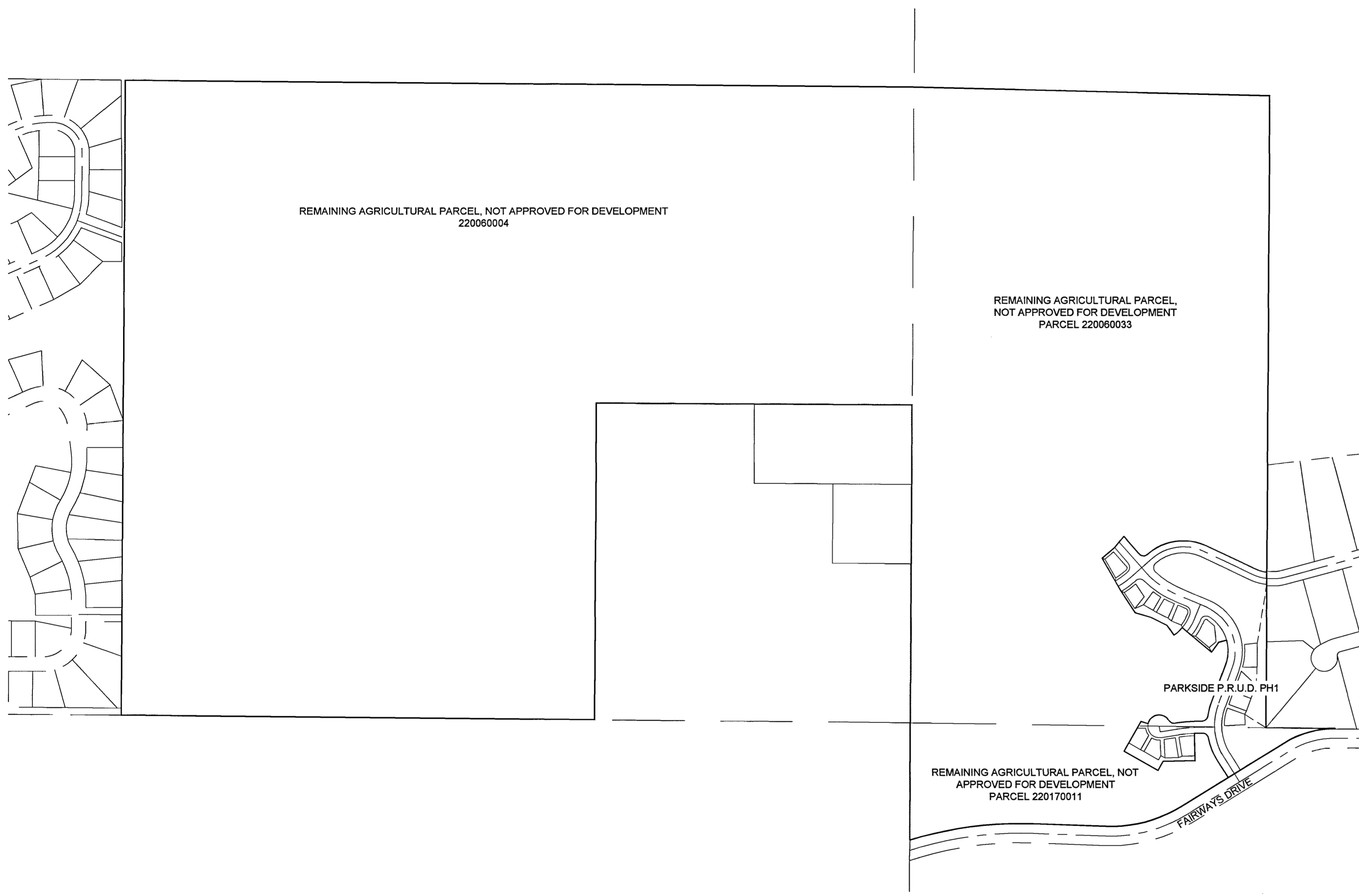


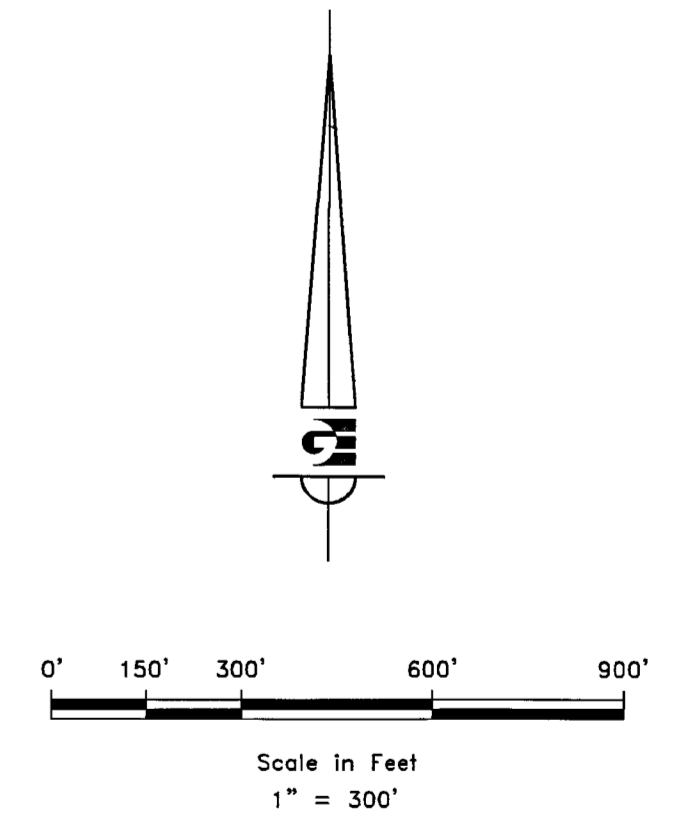
PARKSIDE P.R.U.D. PHASE 1
 A PLANNED RESIDENTIAL UNIT DEVELOPMENT
 LOCATED IN THE NORTHWEST QUARTER OF SECTION 22,
 AND THE SOUTHWEST QUARTER OF SECTION 15,
 TOWNSHIP 7 NORTH, RANGE 1 EAST, SALT LAKE BASE AND MERIDIAN,
 WEBER COUNTY, UTAH
 SEPTEMBER 2017



CURVE TABLE					
CURVE	LENGTH	RADIUS	DELTA	CHORD BEARING	CH LEN.
C1	226.67	250.00	51°56'57"	N5° 45' 15"W	218.99
C2	132.24	250.00	30°18'26"	N16° 34' 30"W	130.70
C3	94.43	250.00	21°38'31"	N9° 23' 58"E	93.87
C4	303.42	200.00	86°55'26"	N23° 14' 30"W	275.15
C5	190.21	400.00	27°14'44"	N53° 04' 51"W	188.42
C6	57.88	200.00	16°34'56"	S31° 35' 15"W	57.68
C7	60.53	300.00	11°33'36"	S54° 35' 46"W	60.43
C8	226.41	200.00	64°51'48"	N81° 14' 52"E	214.52
C9	64.82	200.00	18°34'14"	S73° 56' 57"E	64.54
C10	68.08	500.00	7°48'04"	S84° 40' 41"W	68.02
C11	64.67	475.00	7°48'04"	S84° 40' 41"W	64.62
C12	205.36	47.50	247°42'33"	N24° 37' 55"E	78.89
C13	228.68	170.00	77°04'18"	N18° 18' 55"W	211.82
C14	43.57	25.00	99°51'09"	S73° 13' 22"W	38.26
C15	65.12	225.00	16°34'56"	S31° 35' 15"W	64.89
C16	50.65	175.00	16°34'56"	N31° 35' 15"E	50.47
C17	39.27	25.00	90°00'00"	N21° 42' 13"W	35.36
C18	155.61	430.00	20°44'05"	N56° 20' 10"W	154.77
C19	37.18	25.00	85°12'54"	N88° 34' 34"W	33.85
C20	65.33	325.00	11°31'02"	S54° 34' 29"W	65.22
C21	55.73	275.00	11°36'38"	N54° 37' 17"E	55.63
C22	39.27	25.00	90°00'00"	N3° 48' 58"E	35.36
C23	61.50	465.00	7°34'41"	N84° 33' 59"E	61.46
C24	37.24	57.50	37°06'35"	N75° 22' 06"W	36.59
C25	31.98	57.50	31°51'46"	N24° 31' 55"W	31.57
C26	111.55	47.50	134°33'00"	N81° 12' 42"E	87.63
C27	29.54	25.00	67°42'33"	S65° 22' 05"E	27.85
C28	71.48	525.00	7°48'04"	N84° 40' 41"E	71.43

CURVE TABLE					
CURVE	LENGTH	RADIUS	DELTA	CHORD BEARING	CH LEN.
C29	35.15	25.00	80°33'53"	N48° 17' 46"E	32.33
C30	59.65	280.00	12°12'24"	N14° 07' 02"E	59.54
C31	105.53	170.00	35°34'05"	N2° 26' 11"E	103.85
C32	17.43	10.00	99°51'09"	N73° 13' 22"E	15.30
C33	61.46	240.00	14°40'19"	N30° 37' 57"E	61.29
C34	75.10	210.00	20°29'21"	S9° 58' 33"W	74.70
C35	95.10	240.00	22°42'16"	S4° 47' 22"W	94.48
C36	42.49	165.00	14°45'22"	S30° 40' 28"W	42.38
C37	23.56	15.00	90°00'00"	S21° 42' 13"E	21.21
C38	45.63	440.00	5°56'29"	S63° 43' 58"E	45.61
C39	38.25	440.00	4°58'52"	S56° 11' 17"E	38.24
C40	47.08	175.00	15°24'55"	S47° 35' 10"W	46.94
C41	58.64	335.00	10°01'46"	N53° 49' 51"E	58.57
C42	45.70	265.00	9°52'51"	N53° 45' 24"E	45.64
C43	10.95	15.00	41°48'37"	N27° 54' 40"E	10.70
C44	39.27	25.00	90°00'00"	S86° 11' 02"E	35.36
C45	255.08	225.00	64°57'25"	N81° 17' 40"E	241.64
C46	53.90	175.00	17°38'55"	S73° 29' 18"E	53.69
C47	75.74	225.00	19°17'12"	N74° 18' 26"W	75.38
C48	197.77	175.00	64°45'00"	S81° 11' 28"W	187.41
C49	42.03	25.00	96°18'57"	S0° 39' 30"W	37.25
C50	124.01	370.00	19°12'14"	S57° 06' 06"E	123.43
C51	348.94	230.00	86°55'26"	S23° 14' 30"E	316.42
C52	199.47	220.00	51°56'57"	S5° 45' 15"E	192.71
C53	221.36	390.00	32°31'14"	S74° 31' 40"W	218.40
C54	102.00	280.00	20°52'19"	N21° 17' 34"W	101.44
C55	35.15	25.00	80°33'53"	N51° 08' 21"W	32.33

LINE TABLE		
LINE #	LENGTH	BEARING
L1	20.10	N7° 07' 55"W
L2	16.25	N70° 39' 41"E
L3	18.87	S60° 46' 31"E
L4	16.00	S60° 33' 28"E
L5	40.00	N29° 26' 32"E
L6	105.64	N57° 33' 39"W
L7	16.11	N27° 02' 35"E
L8	16.00	N20° 13' 14"E
L9	74.52	N2° 37' 05"E
L10	247.79	N9° 35' 11"E
L11	22.18	N28° 57' 22"W
L12	16.88	N78° 24' 25"W
L13	11.37	N22° 34' 57"W
L14	13.54	S23° 17' 47"W
L15	17.10	N46° 02' 04"W
L16	16.00	N60° 24' 05"W
L17	38.74	S66° 13' 43"W
L18	1.15	S66° 42' 13"E
L19	1.51	N48° 48' 58"E
L20	9.52	N48° 48' 58"E
L21	13.17	N71° 00' 28"W
L22	12.90	N8° 45' 08"E
L23	11.72	N72° 37' 09"W



R:\2017 - LEWIS HOMES\THE BRIDGES SURVEY\DWG\PARKSIDE PHASE 1 FINAL PLAT2.DWG

DEVELOPER: LEWIS HOMES 5577 EAST ELKHORN DRIVE EDEN, UT 84310 801-430-1507	S2 2	COUNTY RECORDER ENTRY NO. <u>2879091</u> FEE PAID <u>76.00</u> FILED FOR AND RECORDED <u>26 SEP 2017</u> AT <u>312</u> IN BOOK <u>81</u> OF OFFICIAL RECORDS, PAGE <u>26197</u> RECORDED FOR <u>BRIDGES HOLDING</u> LEANN H KILTS COUNTY RECORDER BY: <u>SARA YOUNG</u>
GARDNER ENGINEERING CIVIL • LAND PLANNING MUNICIPAL • LAND SURVEYING 3150 SOUTH 375 EAST OGDEN, UT OFFICE: 801-276-2021 FAX: 801-276-0066		