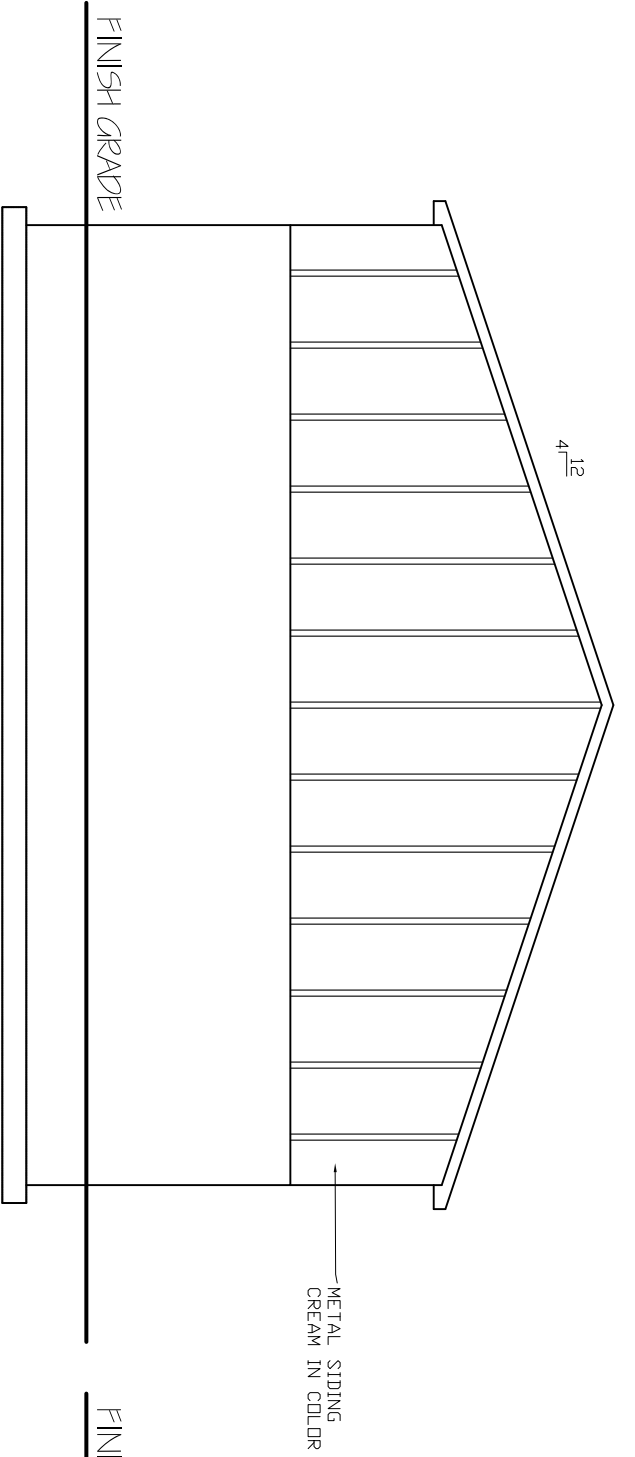
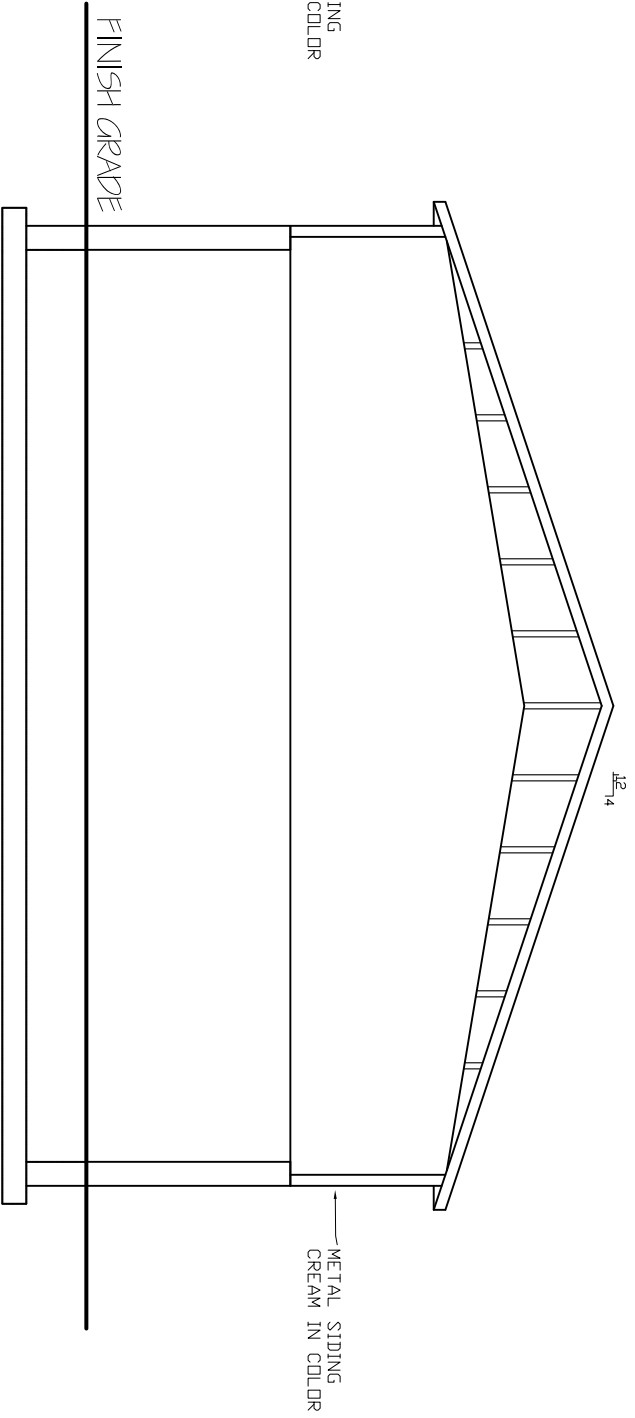


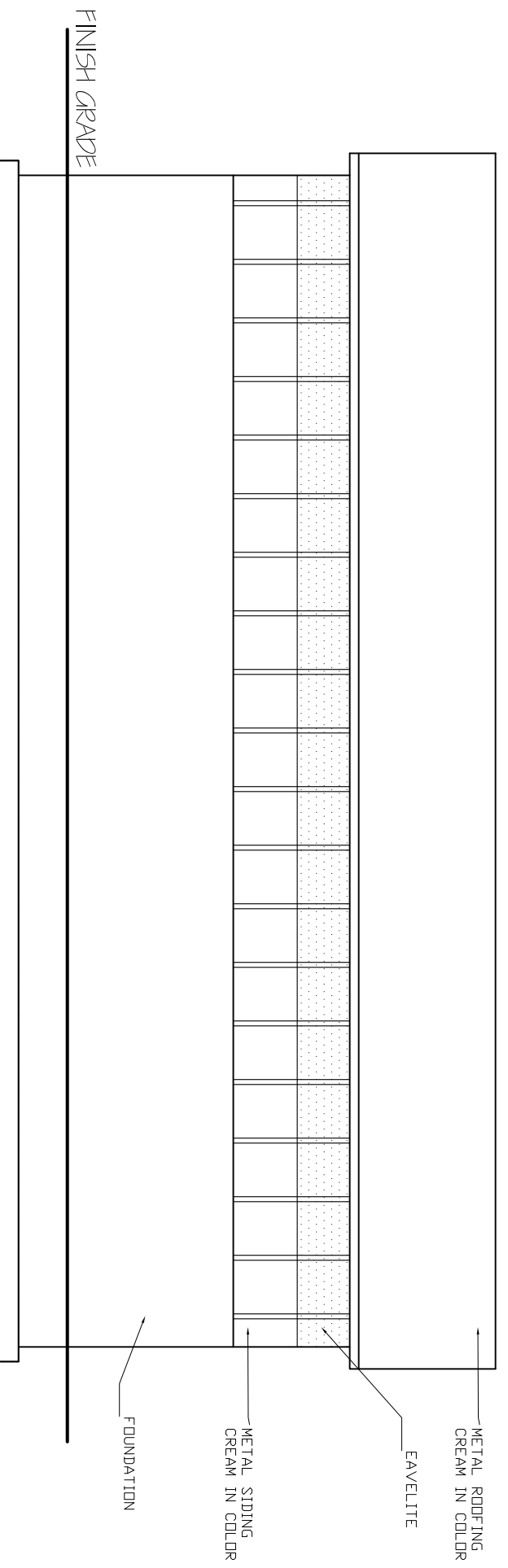
UPPER VALLEY SALT STORAGE BUILDING



REAR ELEVATION



FRONT ELEVATION



RIGHT / LEFT ELEVATION

SCALE
1/8"=1'

Prepared By: Weber County Engineering
2380 Washington Blvd. Suite 240
Ugden, Utah
(801) 399-8374

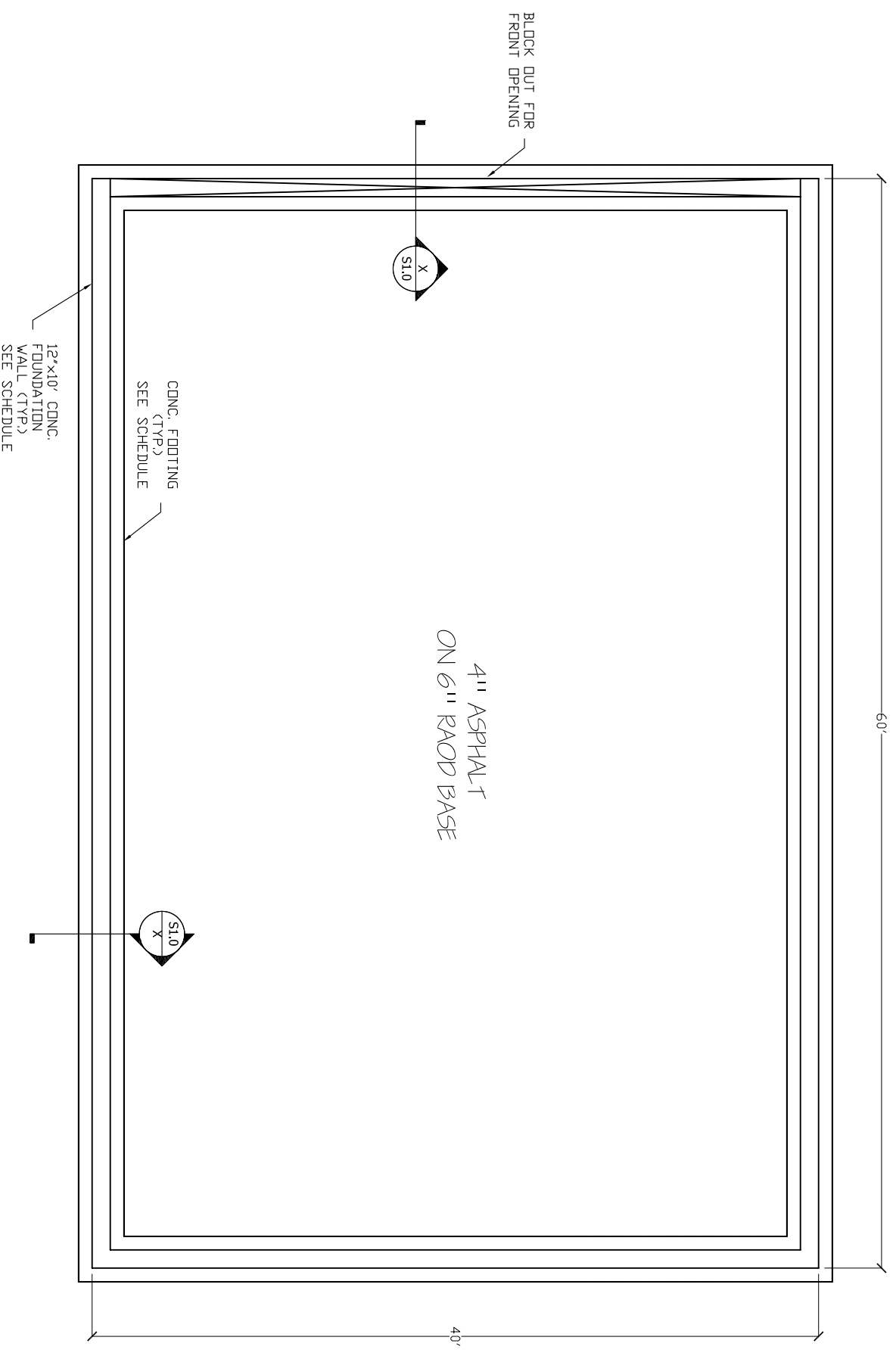
SALT STORAGE BUILDING

WEBER COUNTY SALT STORAGE BUILDING
4735 EAST 2650 NORTH
EDEN, UTAH

DRAWING DATE:
January 28, 2011
REVISION DATE:

SHEET
1
OF
4

NOTES:
 FOUNDATION WALLS TO SUPPORT THE WEIGHT
 OF SALT BEING STORED AND PRESSING AGAINST
 THEM AS WELL AS THE FORCE FROM A FRONT
 END LOADER PLACING THE SALT AND REMOVING IT.
 THERE IS A HIGH POSSIBILITY THAT MATERIAL WILL
 BE STORED ABANST THE BUILDING ON THE OUTSIDE.



FOOTING / FOUNDATION PLAN
 2400 SQ FT

SCALE
 1/8"=1'

Prepared By: Weber County Engineering
 2380 Washington Blvd. Suite 240
 Ogden, Utah
 (801) 399-8374

SALT STORAGE BUILDING

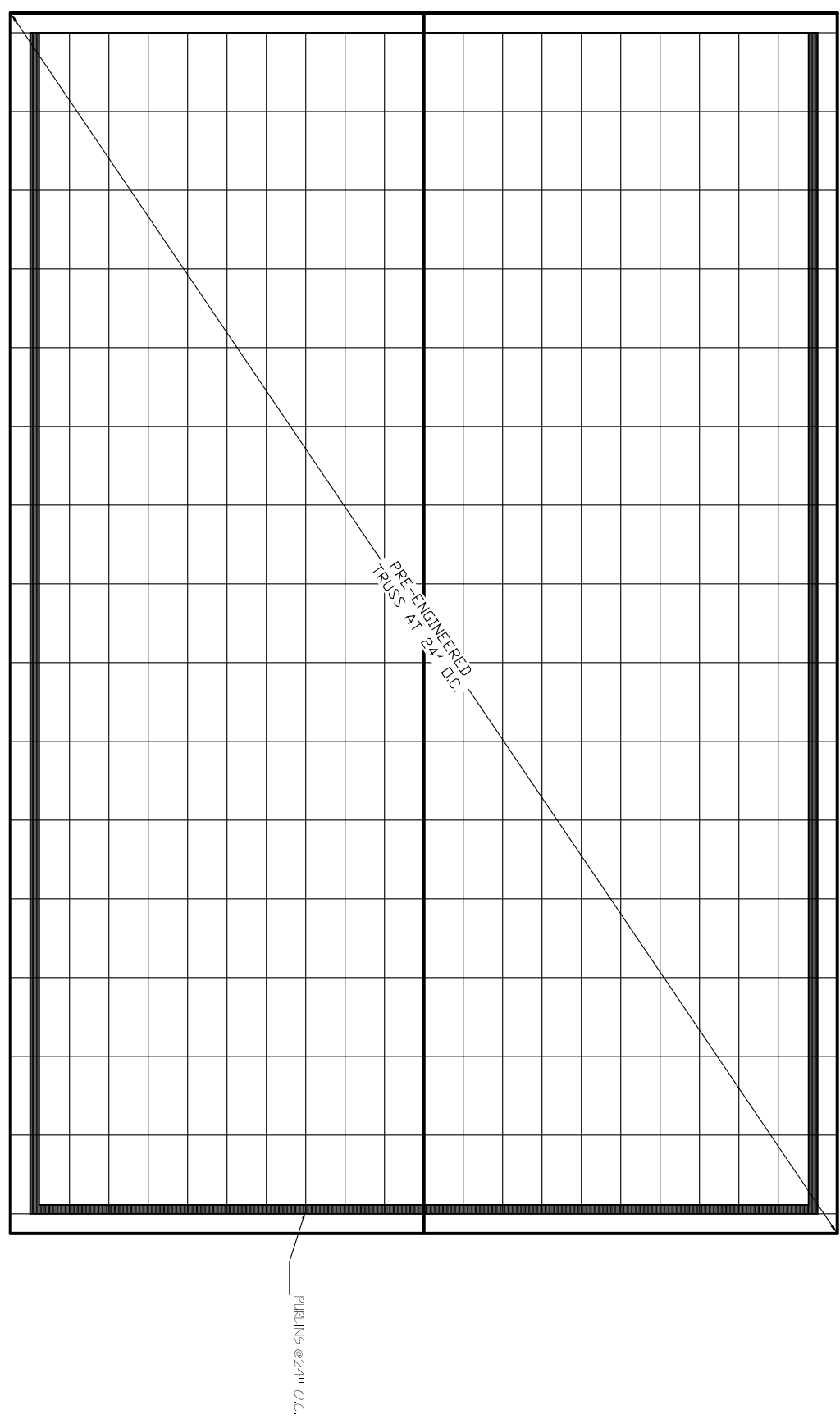
WEBER COUNTY SALT STORAGE BUILDING
 4735 EAST 2650 NORTH
 EDEN, UTAH

DRAWING DATE:
 January 28, 2011
 REVISION DATE:
 -

SHEET
 2
 OF
 4

ROOF FRAMING PLAN IS FOR DESIGN PURPOSES ONLY. TRUSS DESIGN TO BE PER MANUFACTURER.

NOTES:
1. ALL LUMBER IN CONTACT WITH CONCRETE OR MASONRY MUST BE TREATED OR FOUNDATION GRADE REDWOOD.



ROOF FRAMING PLAN

SCALE
1/8"=1'

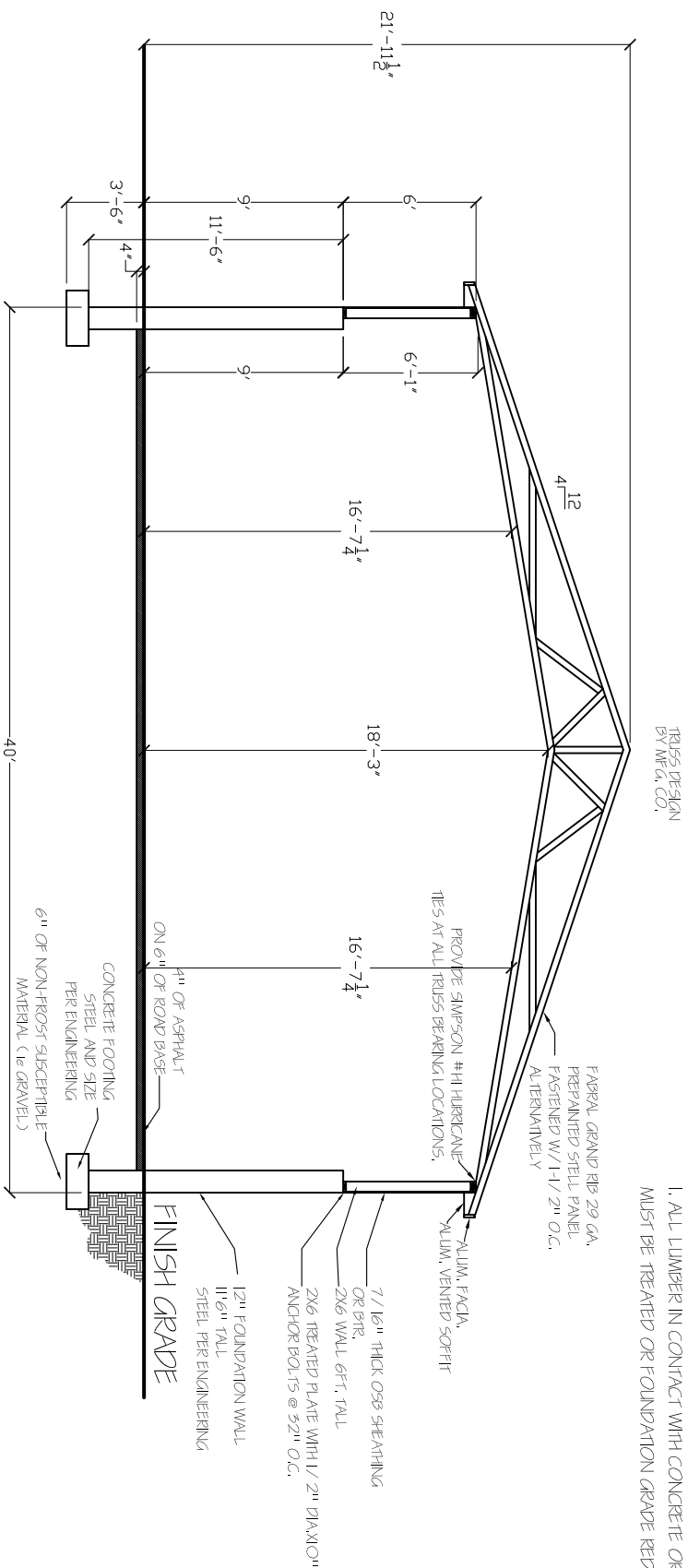
Prepared By: Weber County Engineering
2380 Washington Blvd. Suite 240
Ogden, Utah
(801) 399-8374

SALT STORAGE BUILDING

WEBER COUNTY SALT STORAGE BUILDING
4735 EAST 2650 NORTH
EDEN, UTAH

DRAWING DATE: January 28, 2011
REVISION DATE:

SHEET
3
OF
4



NOTES:
 1. ALL LUMBER IN CONTACT WITH CONCRETE OR MASONRY MUST BE TREATED OR FOUNDATION GRADE REDWOOD.

1 TYPICAL WALL SECTION
 1/8"=1'

2 DETAIL
 NTS

3 SECTION
 NTS

SCALE
 1/8"=1'

Prepared By: Weber County Engineering
 2380 Washington Blvd. Suite 240
 Ogden, Utah
 (801) 399-8374

SALT STORAGE BUILDING

WEBER COUNTY SALT STORAGE BUILDING
 4735 EAST 2650 NORTH
 EDEN, UTAH

DRAWING DATE:
 January 28, 2011
 REVISION DATE:

SHEET
 4
 OF
 4