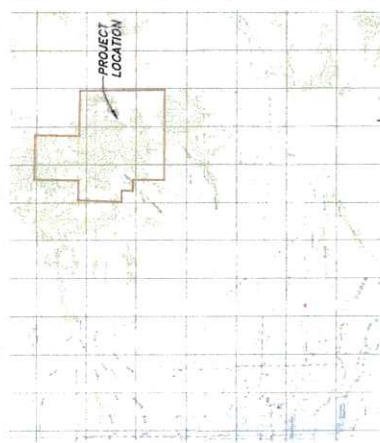


X Geodesic Dome

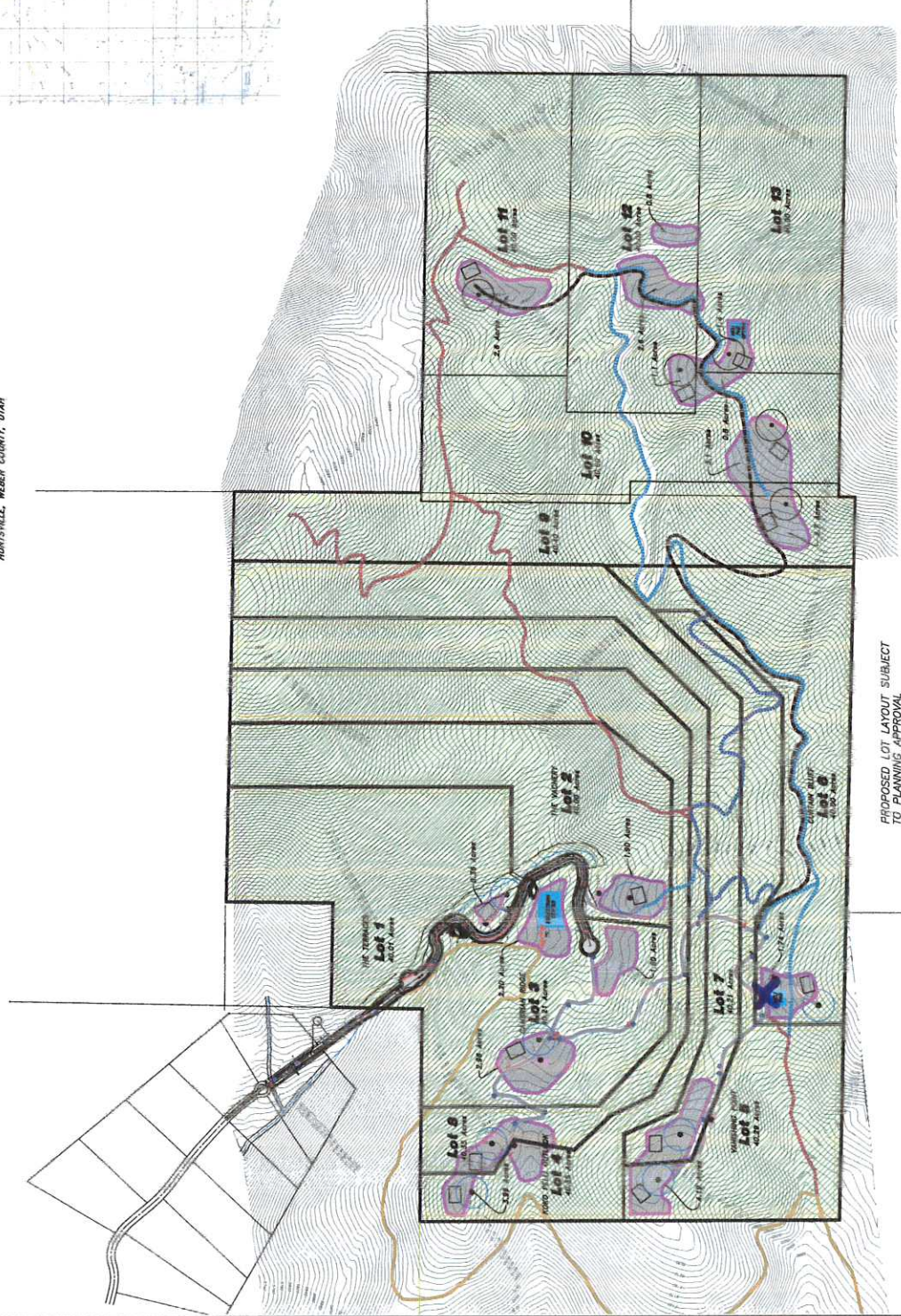
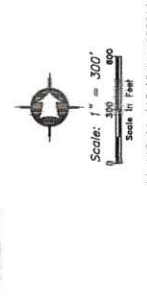
Preliminary Plat For THE SANCTUARY NORTH

HUNTSVILLE, WEBER COUNTY, UTAH



LEGEND:

- 50' Private Roadway
 - 50' Private Driveway Easement
 - Exist. 12' wide Green Hills Loop Trail
 - Exist. Trail or Road
 - Winter Habitat Protected Trail (Motorized Vehicles Prohibited from Jan. 1st to Apr. 7th)
 - Proposed 12' wide Equestrian/ Nordic Trail
 - Future 50' Private Road
 - Minimum Building Envelope (75'x100')
 - Limited Building Area (Less than 25% slope)
 - Future Building Area (Less than 25% slope)
- Building Setbacks:
 Front = 75' min.
 Side = 40' min.
 Rear = 30' min.
- Well Site & 100' Radius Protection Zone
- Septile Site
- Check Dam
- Conservation Easement Area



NOTE:
 NO SNOWMOBILE OR SINGLE SEAT ATV ALLOWED ON ANY TRAILS

EA HANSEN & ASSOCIATES, INC.
 Planning, Engineering and Land Surveying
 27 East 100 North
 Layton, Utah 84041
 (435) 752-1942 (fax) 752-9272

X Geodesic Dome

