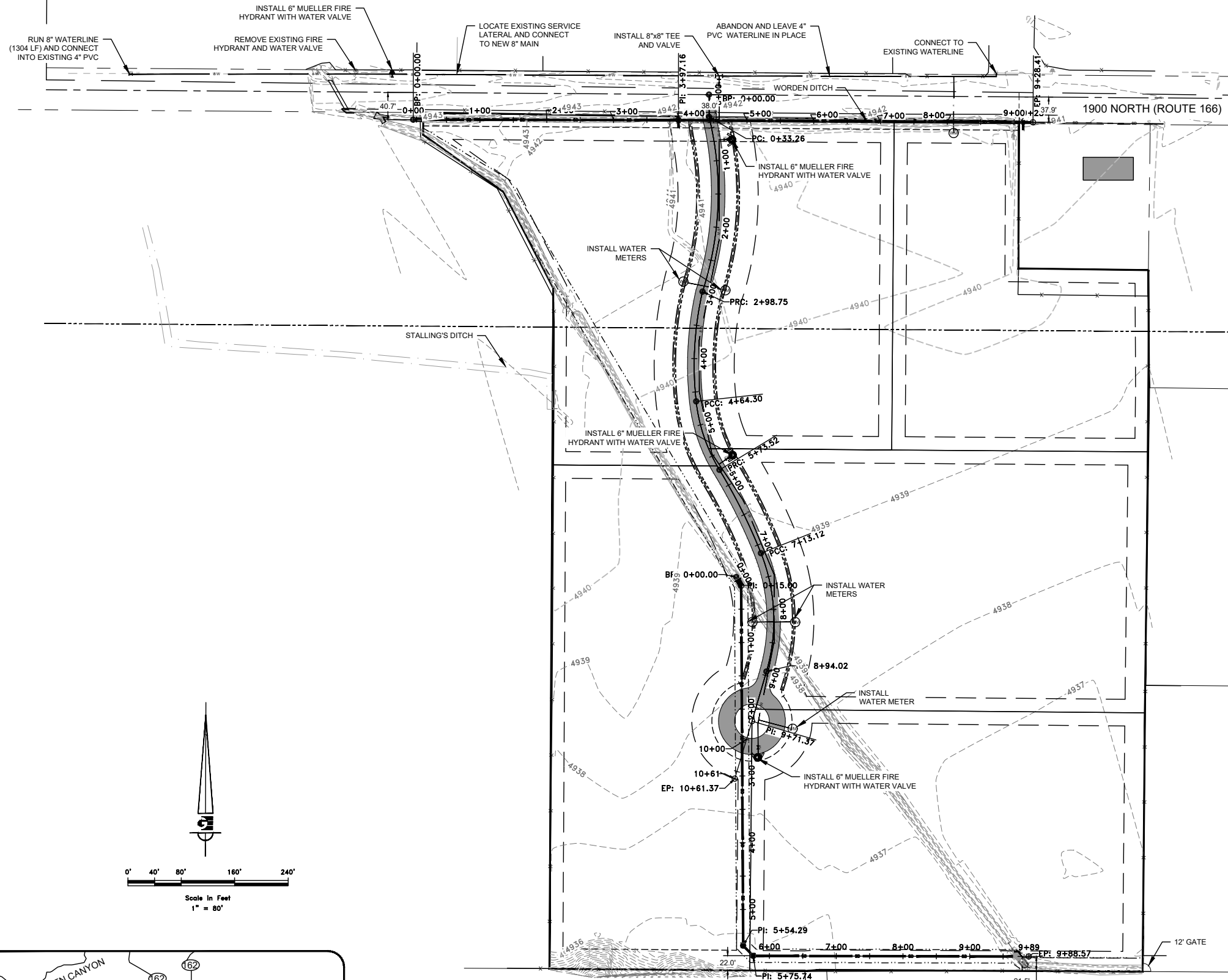
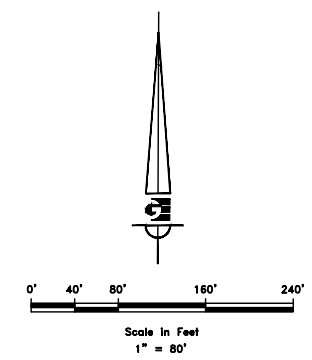


R:\112 - Platinum Investments\BASE CAMP 2\DESIGN\DWG\REFLECTIONS SUB PHASE 1 PLAT CP Canal 2.dwg, 7/6/2016 3:48:14 PM, _DWG To PDF.pc3



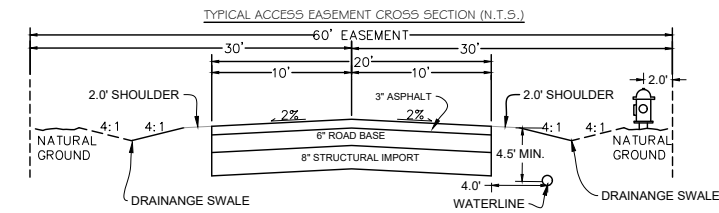
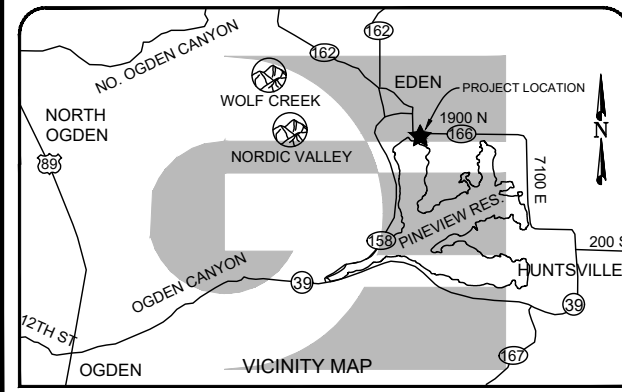
GENERAL NOTES:

- IF CHANGES ARE MADE TO THE WORDEN DITCH OR TO THE CANAL CANAL TO THE FROERER AND RITTER DITCHES BETWEEN APRIL 15 AND OCTOBER 15, TEMPORARY DITCHES WILL NEED TO BE MADE SO THAT NO DOWNSTREAM WATER USERS ARE IMPACTED DURING CONSTRUCTION.
- DITCHES MUST BE BUILT TO GRADE AND CONTRACTOR SHALL PROVIDE "AS BUILT" DRAWINGS.



LEGEND

---	PROPERTY LINE
---	INTERIOR LOT LINE
---	ADJACENT PARCEL
---	SECTION LINE
---	CENTER LINE
---	EXISTING FENCE
---	PUBLIC UTILITY AND ACCESS EASEMENT
---	DRAINAGE EASEMENT
---	EXISTING STORM PIPE
---	EXISTING TOP OF BANK
---	PROPOSED STORM LINE
---	PROPOSED 8" WATER LINE



DEVELOPER:
 PLATINUM INVESTMENTS
 CORTNEY VALENTINE
 PO BOX 1197
 EDEN, UTAH 84310
 602-882-0122

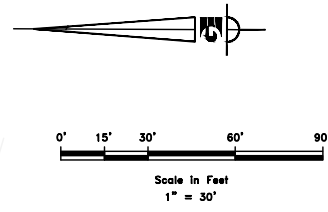
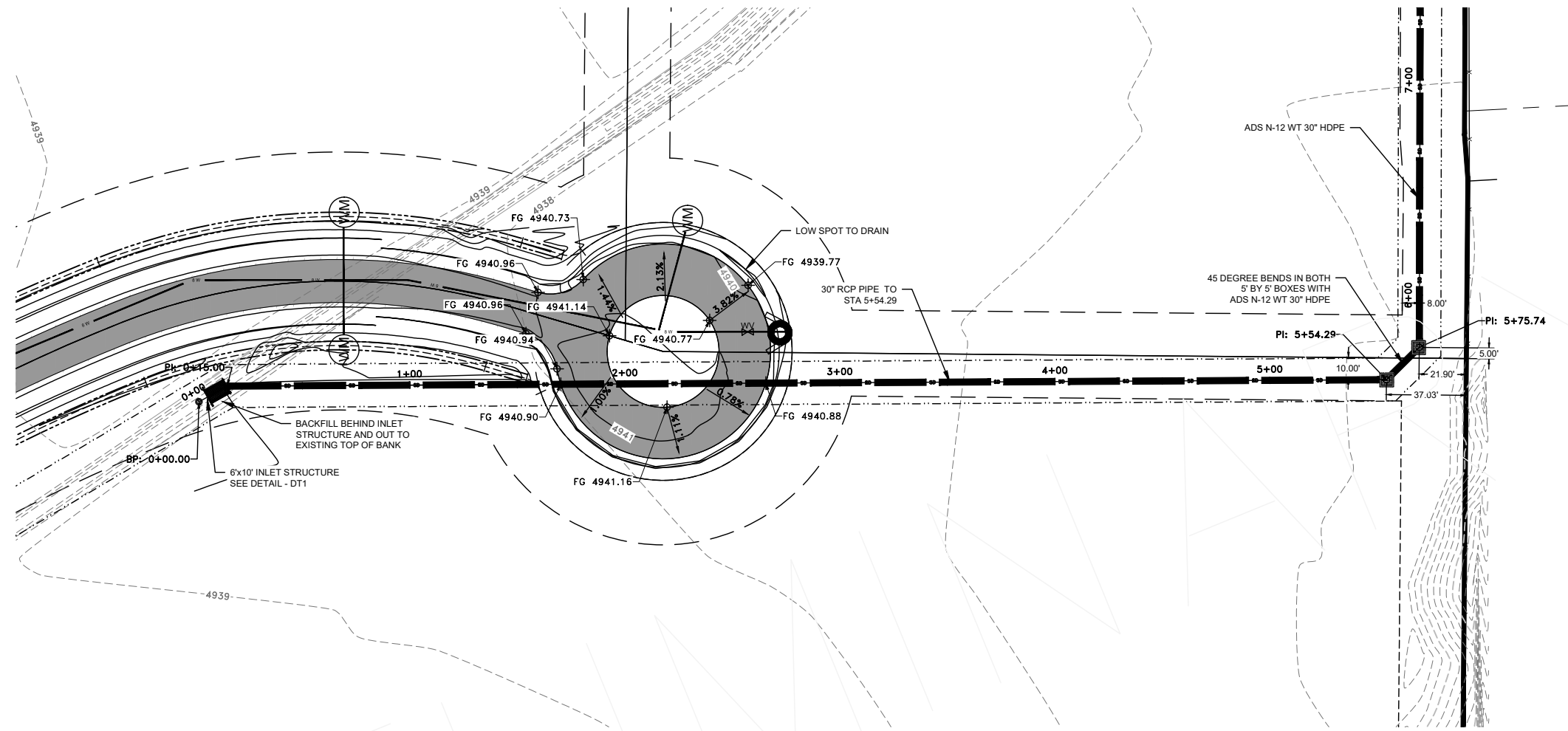
SCALE: 1"=100'
 DATE: 6-9-16
 DESIGN: SGP
 DRAWN: SGP
 CHECKED: KHW

REVISIONS	DATE	DESCRIPTION

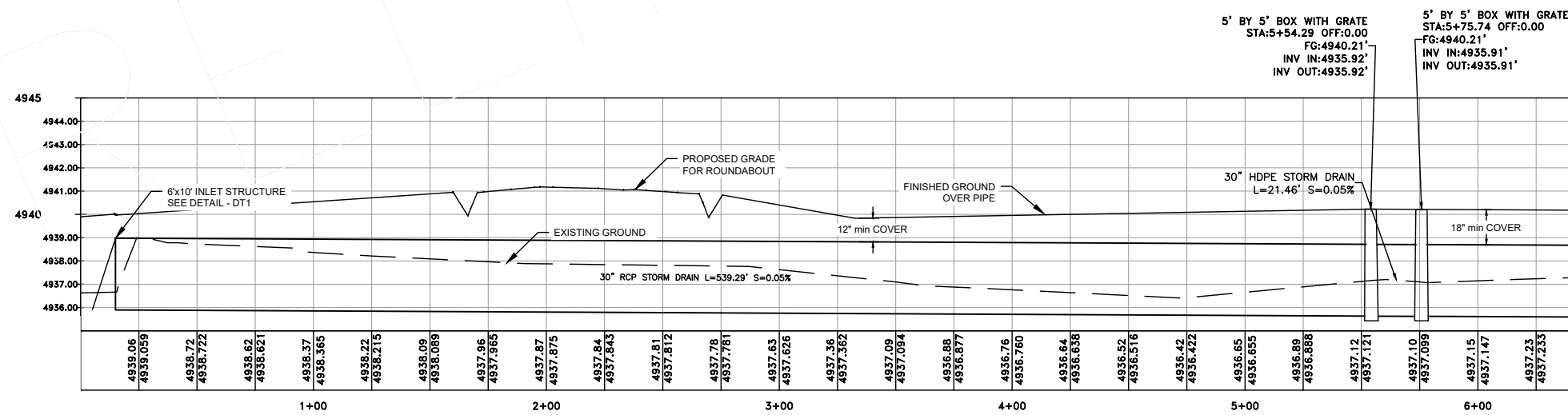
IRRIGATION IMPROVEMENT PLAN
 REFLECTIONS SUB PHASE 1
 1900 NORTH STREET
 EDEN, WEBER COUNTY, UTAH

GARDNER ENGINEERING
 CIVIL & LAND PLANNING
 MUNICIPAL & LAND SURVEYING
 5150 SOUTH 375 EAST OGDEN, UT
 OFFICE: 801.476.0202 FAX: 801.476.0066

S1
 1



- NOTES:**
- 30" RCP PIPE SHALL HAVE A MIN COVER OF 12"
 - 30" HDPE PIPE SHALL HAVE A MIN COVER OF 18"

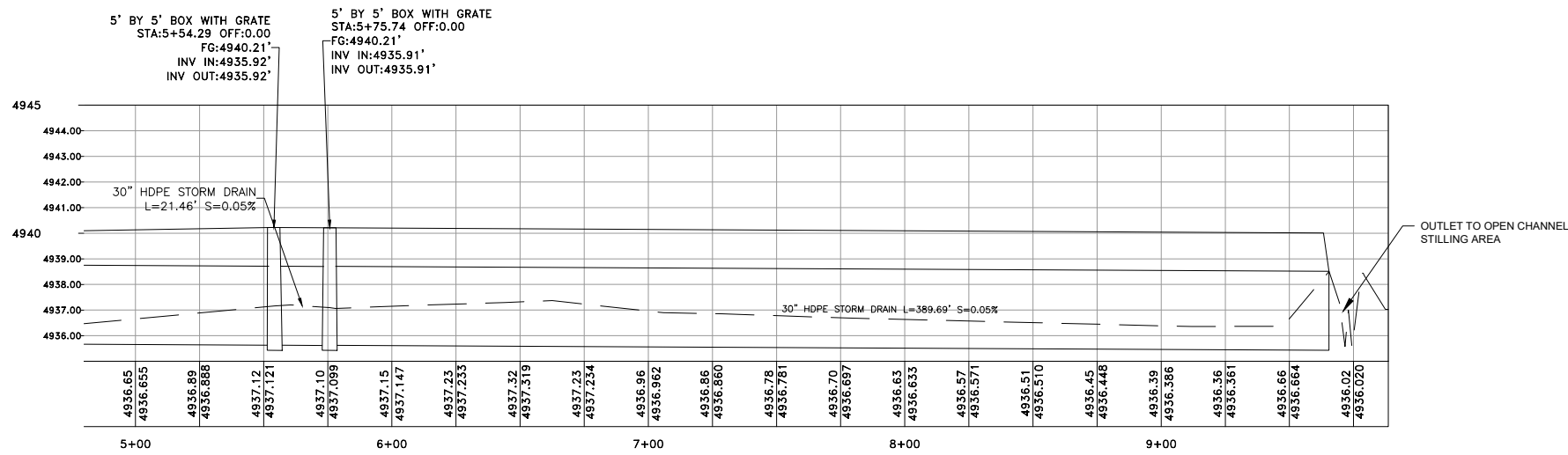
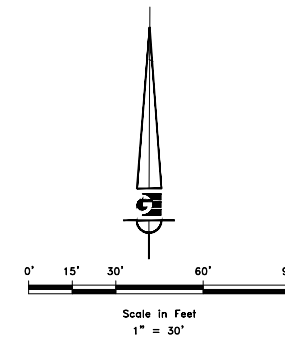
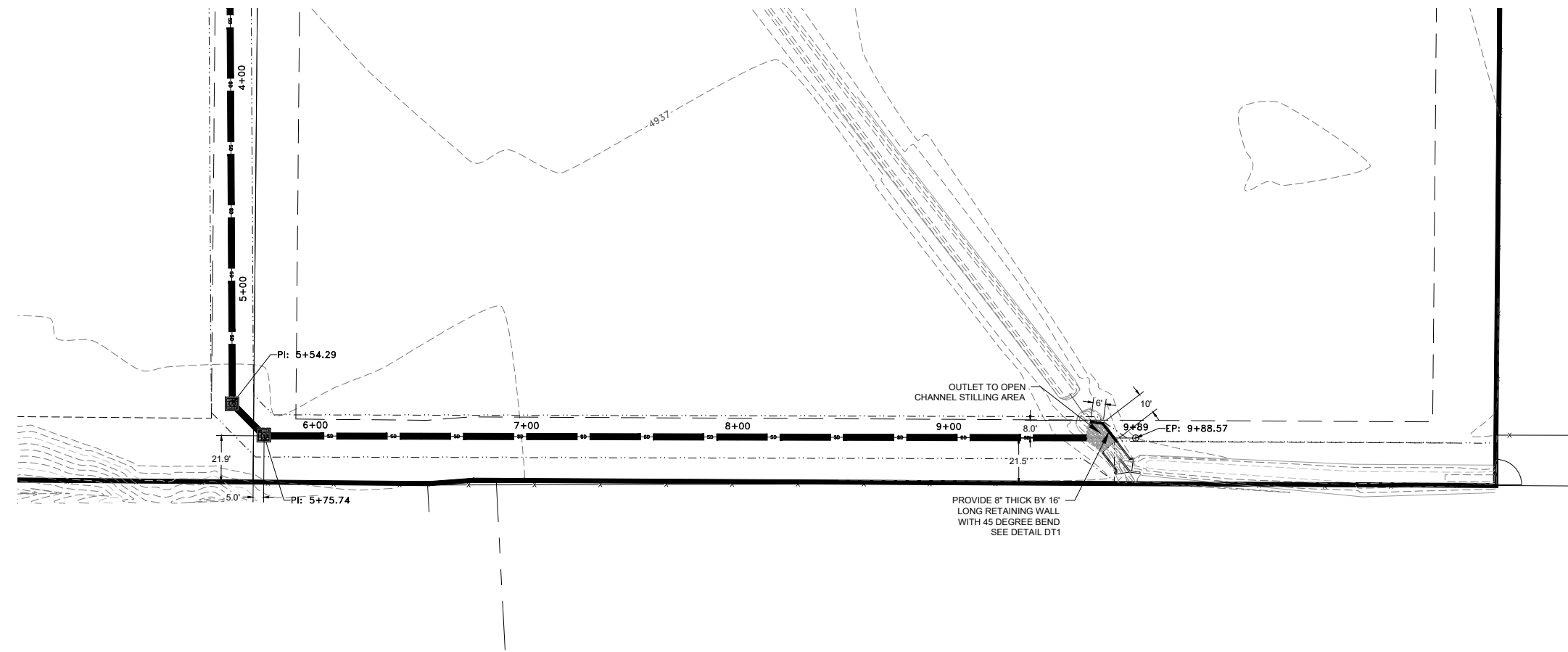


REVISIONS	DATE	DESCRIPTION

SCALE: 1"=30'
DATE: _____
DESIGN: CJP
DRAWN: CJP
CHECKED: _____

PLAN AND PROFILE 1
 REFLECTIONS SUB PHASE 1
 1900 NORTH STREET
 EDEN, WEBER COUNTY, UTAH

GARDNER ENGINEERING
 CIVIL • LAND PLANNING
 MUNICIPAL • LAND SURVEYING
 5150 SOUTH 375 EAST, OGDEN, UT
 OFFICE: 801.476.0202 FAX: 801.476.0066



NOTES:

1. 30" RCP PIPE SHALL HAVE A MIN FILL OF 12"
2. 30" HDPE PIPE SHALL HAVE A MIN FILL OF 18"

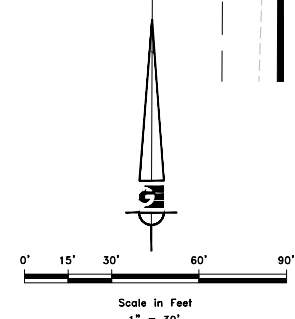
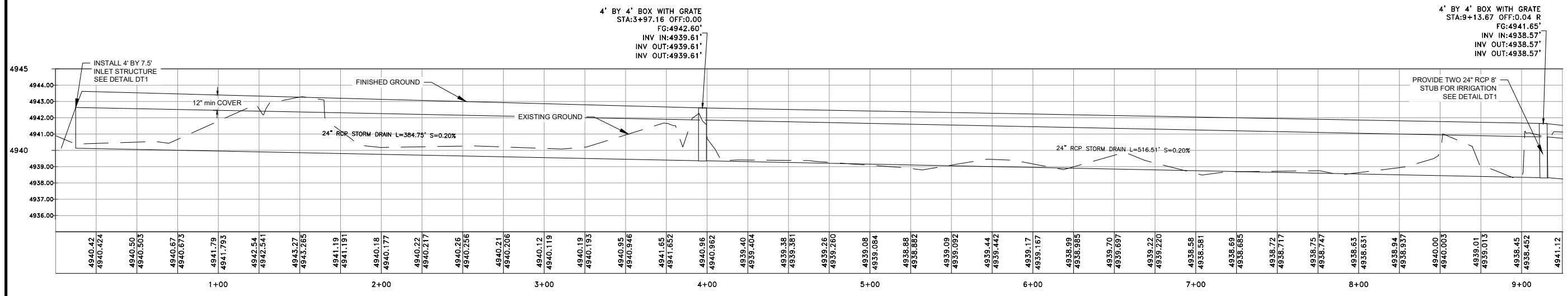
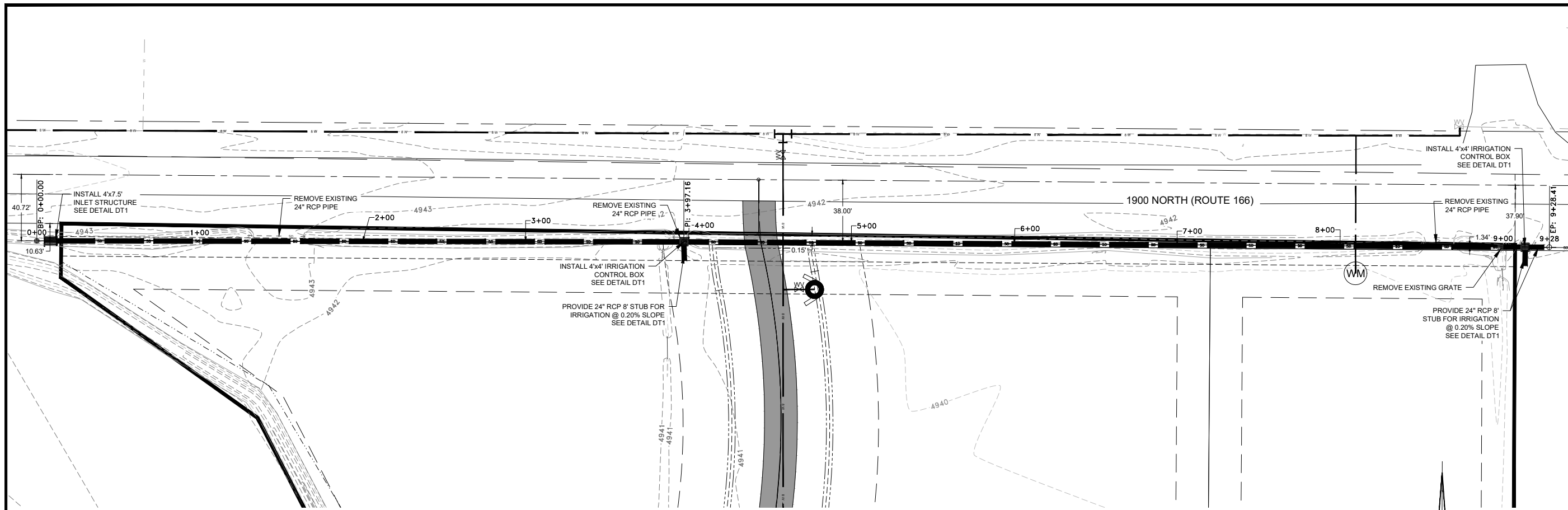
SCALE: 1"=30'
DATE: _____
DESIGN: CJP
DRAWN: CJP
CHECKED: _____

REVISIONS	DATE	DESCRIPTION

PLAN AND PROFILE 2
REFLECTIONS SUB PHASE 1
1900 NORTH STREET
EDEN, WEBER COUNTY, UTAH

GARDNER ENGINEERING
 CIVIL • LAND PLANNING
 MUNICIPAL • LAND SURVEYING
 5150 SOUTH 375 EAST, OGDEN, UT
 OFFICE: 801.476.0202 FAX: 801.476.0066

DWG. - R1612 - PLATINUM INVESTMENTS BASE CAMP 2 DESIGN DWG REFLECTIONS SUB PHASE 1 PLAT CP CANAL 2



NOTES:
 1. 24" RCP PIPE SHALL HAVE A MIN COVER OF 12"

SCALE: 1"=30'

DATE:	DESIGN: CJP
DATE:	DRAWN: CJP
DATE:	CHECKED:

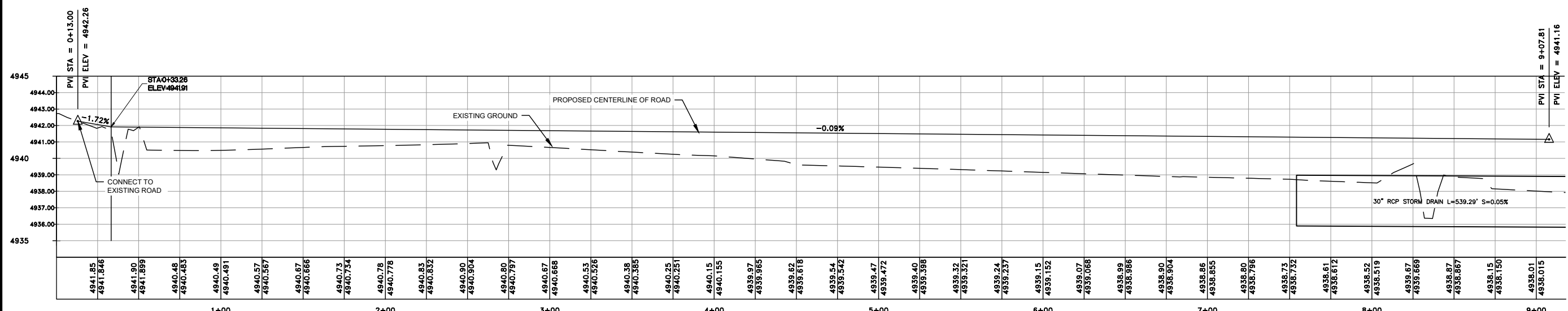
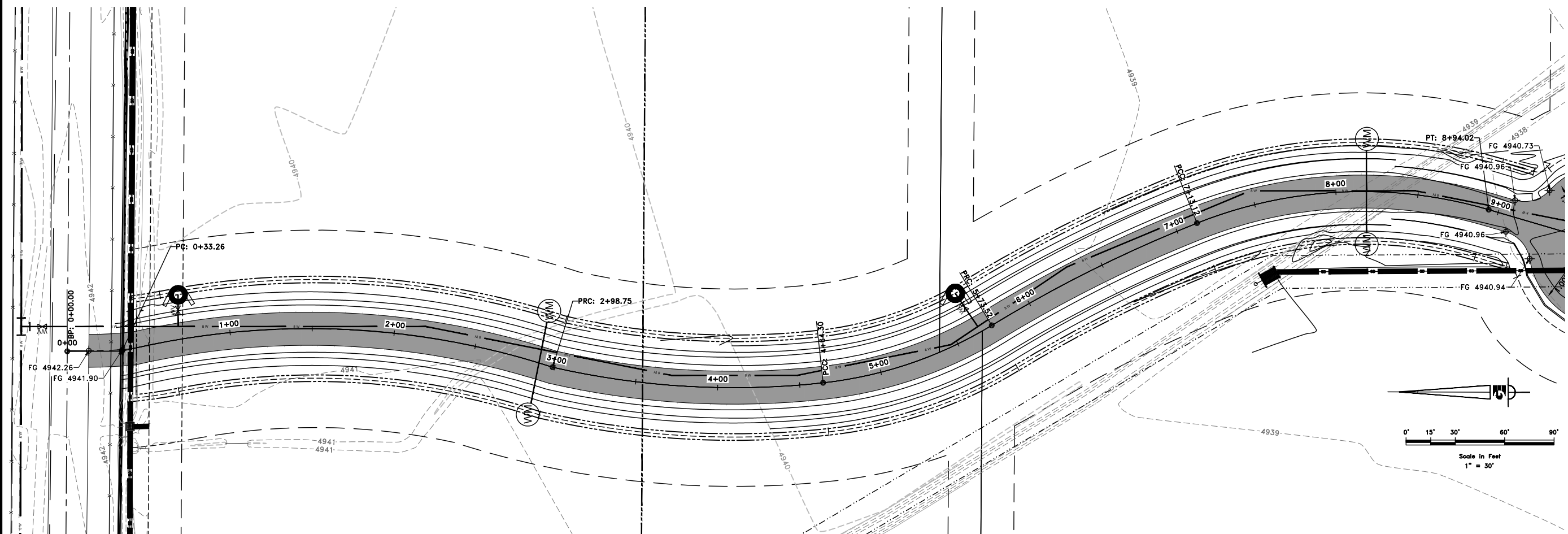
REVISIONS	DATE	DESCRIPTION

1900 NORTH (ROUTE 166)

PLAN AND PROFILE 3
 REFLECTIONS SUB PHASE 1
 1900 NORTH STREET
 EDEN, WEBER COUNTY, UTAH

GARDNER ENGINEERING
 CIVIL • LAND PLANNING
 MUNICIPAL • LAND SURVEYING

5150 SOUTH 375 EAST, OGDEN, UT
 OFFICE: 801.476.0202 FAX: 801.476.0066



Station	Existing Ground Elevation	Proposed Centerline Elevation
0+00	4941.85	4941.846
1+00	4941.90	4941.899
2+00	4940.48	4940.483
3+00	4940.49	4940.491
4+00	4940.57	4940.567
5+00	4940.67	4940.666
6+00	4940.73	4940.734
7+00	4940.78	4940.778
8+00	4940.83	4940.832
9+00	4940.90	4940.904
9+00	4940.80	4940.797
9+00	4940.67	4940.668
9+00	4940.53	4940.526
9+00	4940.38	4940.385
9+00	4940.25	4940.251
9+00	4940.15	4940.155
9+00	4939.97	4939.965
9+00	4939.62	4939.618
9+00	4939.54	4939.542
9+00	4939.47	4939.472
9+00	4939.40	4939.398
9+00	4939.32	4939.321
9+00	4939.24	4939.237
9+00	4939.15	4939.152
9+00	4939.07	4939.068
9+00	4938.99	4938.986
9+00	4938.90	4938.904
9+00	4938.86	4938.855
9+00	4938.80	4938.796
9+00	4938.73	4938.732
9+00	4938.61	4938.612
9+00	4938.52	4938.519
9+00	4938.67	4938.669
9+00	4938.87	4938.867
9+00	4938.15	4938.150
9+00	4938.01	4938.015

Cut/Fill Report

Generated: 2016-07-01 11:25:43
 By user: cpotter
 Drawing: R:\1612 - Platinum Investments\BASE CAMP 2\DESIGN\DWG\R\1612 - Platinum Investments\BASE CAMP 2\DESIGN\DWG\REFLECTIONS SUB PHASE 1 PLAT CP Canal 2.dwg

Volume Summary

Name	Type	Cut Factor	Fill Factor	2d Area (Sq. Ft.)	Cut (Cu. Yd.)	Fill (Cu. Yd.)	Net (Cu. Yd.)
Cut and Fill Volumes	fill	1.00	1.00	79941.27	53.45	4237.16	4183.71<Fill>

Totals

Total	2d Area (Sq. Ft.)	Cut (Cu. Yd.)	Fill (Cu. Yd.)	Net (Cu. Yd.)
Total	79941.27	53.45	4237.16	4183.71<Fill>

* Value adjusted by cut or fill factor other than 1.0

REVISIONS	DATE	DESCRIPTION

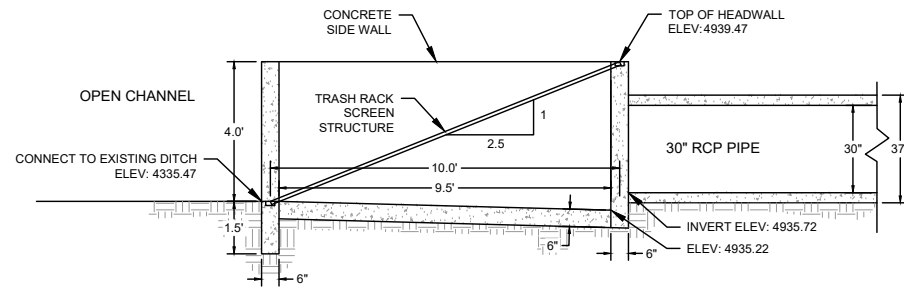
SCALE: 1"=30'
DATE: _____
DESIGN: CJP
DRAWN: CJP
CHECKED: _____

PLAN AND PROFILE 1 ROAD
 REFLECTIONS SUB PHASE 1
 1900 NORTH STREET
 EDEN, WEBER COUNTY, UTAH

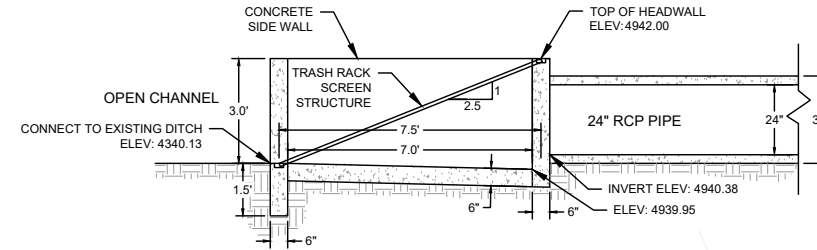
GARDNER ENGINEERING
 CIVIL & LAND PLANNING
 MUNICIPAL & LAND SURVEYING
 5150 SOUTH 375 EAST, OGDEN, UT
 OFFICE: 801.476.0202 FAX: 801.476.0066

PP4
 4

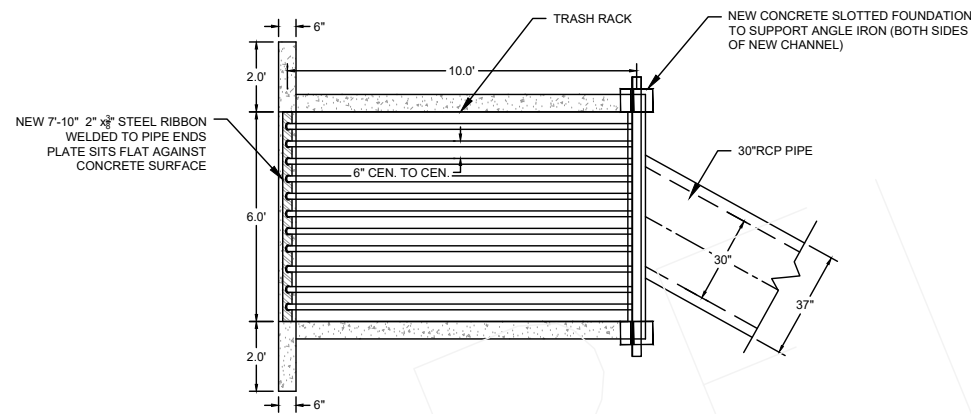
R:\11612 - Platinum Investments\BASE CAMP 2\DESIGN\DWG\REFLECTIONS SUB PHASE 1 PLAT CP Canal 2.dwg, 7/6/2016 3:48:36 PM, _DWG To PDF.pc3



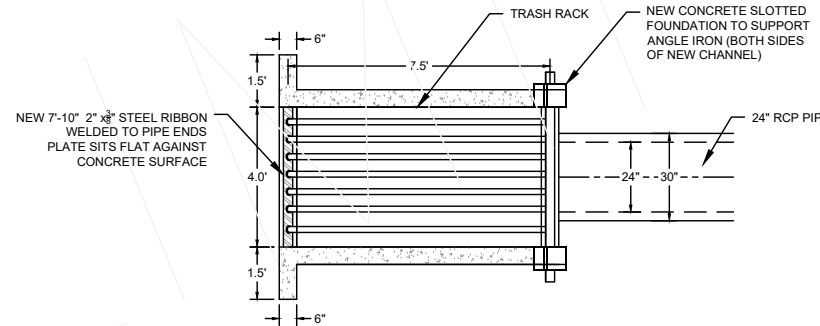
PROFILE VIEW DETAIL OF OPEN CHANNEL TRANSITION INTO 30" RCP PIPE



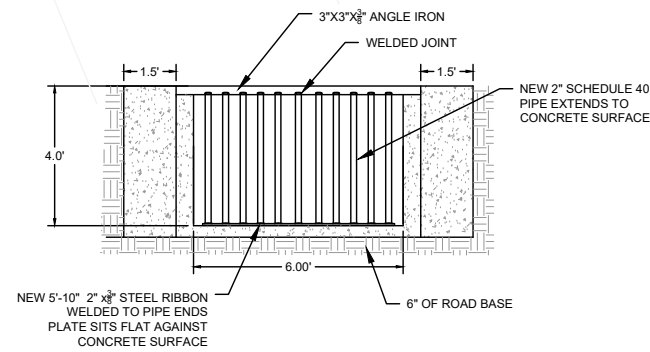
PROFILE VIEW DETAIL OF OPEN CHANNEL TRANSITION INTO 24" RCP PIPE



PLAN VIEW DETAIL OF OPEN CHANNEL TRANSITION INTO 30" RCP PIPE

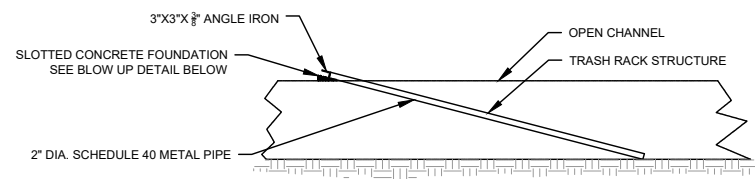


PLAN VIEW DETAIL OF OPEN CHANNEL TRANSITION INTO 24" RCP PIPE



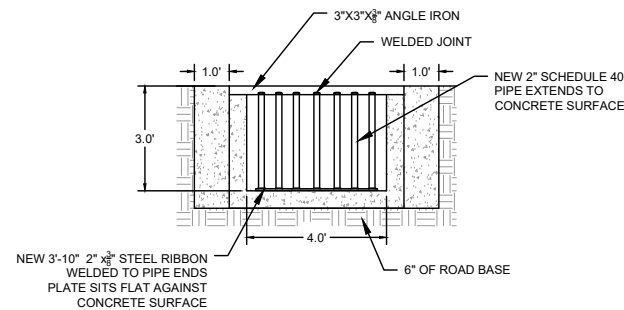
INCOMING CHANNEL DETAIL FOR NEW TRASH RACK SCREEN STRUCTURE

1 6'x10' INLET STRUCTURE Scale: NTS



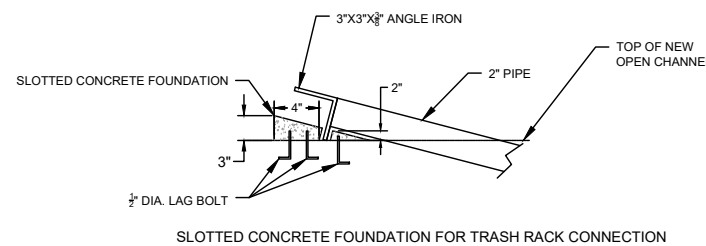
INCOMING CHANNEL DETAIL FOR NEW TRASH RACK SCREEN STRUCTURE

3 INLET STRUCTURE CONNECTIONS Scale: NTS

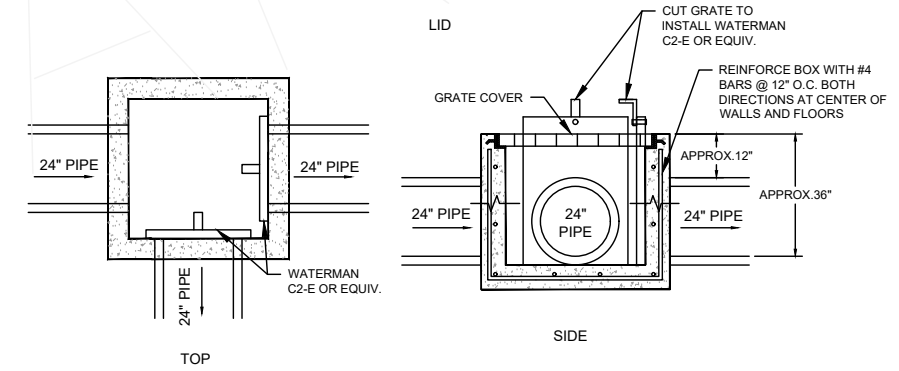
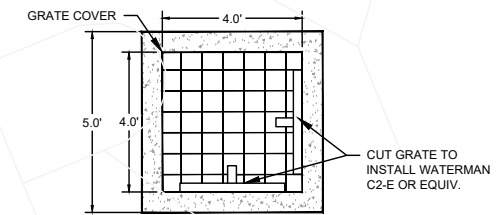


INCOMING CHANNEL DETAIL FOR NEW TRASH RACK SCREEN STRUCTURE

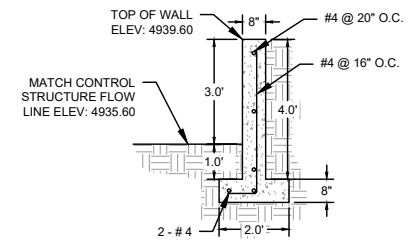
2 4'x7.5' INLET STRUCTURE Scale: NTS



SLOTTED CONCRETE FOUNDATION FOR TRASH RACK CONNECTION



4 4'x4' IRRIGATION CONTROL BOX Scale: NTS



5 RETAINING WALL Scale: NTS

SCALE: 1"=30'	DATE:	DESIGN:	DRAWN: CJP	CHECKED:
REVISIONS	DESCRIPTION	DATE		

DETAIL
REFLECTIONS SUB PHASE 1
1900 NORTH STREET
EDEN, WEBER COUNTY, UTAH

GARDNER ENGINEERING
CIVIL & LAND PLANNING
MUNICIPAL & LAND SURVEYING
5150 SOUTH 375 EAST, OGDEN, UT
OFFICE: 801.476.0202 FAX: 801.476.0066

DT1