

Vicinity Map

Legend

- SS = PROPOSED SANITARY SEWER LINE
- EXIST SS = EXISTING SANITARY SEWER LINE
- IRR = PROPOSED IRRIGATION WATER LINE
- EXIST IRR = EXISTING IRRIGATION WATER LINE (SIZE VARIES)
- W = PROPOSED CULINARY WATER LINE (SIZE VARIES)
- EXIST W = EXISTING CULINARY WATER LINE
- SD = PROPOSED STORM DRAIN (SIZE VARIES)
- EXIST SD = EXISTING STORM DRAIN
- EXIST FENCE LINE
- PROPOSED FIRE HYDRANT
- PROPOSED SANITARY SEWER MANHOLE
- PROPOSED GATE VALVE
- PLUG W/ 2" BLOW-OFF
- PROPOSED STORM DRAIN MANHOLE
- PROPOSED SINGLE GRATE CATCH BASIN WITH BICYCLE-SAFE GRATE
- PROPOSED REDUCERS
- PLUG & BLOCK
- AIR-VAC ASSEMBLY
- PROPOSED ASPHALT SURFACE

General Notes:

- STALLS DESIGNATED AS HANDICAP WILL REQUIRE A PAINTED HANDICAP SYMBOL.
- FIRE LAND MARKINGS AND SIGNS TO BE INSTALLED AS DIRECTED BY THE FIRE MARSHALL.
- PAVEMENT MARKINGS, DIRECTIONAL ARROWS AND STOP BARS WILL BE PAINTED AT EACH DRIVEWAY AS SHOWN ON THE PLANS.
- SEE HORIZONTAL CONTROL PLAN FOR COORDINATES, RADII/USES AND DETAILED DIMENSIONS OF SITE IMPROVEMENTS.
- BUILDING SIDEWALKS, RAMPS, AND BOLLARDS ARE BUILDINGS CONTRACTOR RESPONSIBLE ITEMS. SEE ARCHITECTURAL PLANS.
- ALL DIMENSIONS ARE TO BACK OF CURB UNLESS OTHERWISE NOTED.

Site Data:

TOTAL AREA = 569,977.1 S.F.
TOTAL RESIDENTIAL BLDG. = 7 - 12 PLEX
= 2 - 8 PLEX
= 1 - 4 PLEX
= 5 - SINGLE UNITS
= 1 LODGE W/ 44 UNITS

TOTAL UNITS = 153
TOTAL ADA PARKING = 32
UNDERGROUND GARAGES = 10
OPEN = 150

RECEIVED

By Michael on 2010-10-04

REVIEWED

By Michael at 2:04 pm, Oct 21, 2010

Developer:

Celtic Bank
c/o Brad Bybee
340 East 400 South
Salt Lake City, UT. 84101



REVISIONS	DESCRIPTION
DATE	

Edgewater Beach Resort
@ Snow Basin Road
(A Condominium Complex)
WEBER COUNTY, UTAH

Amended Site Plan

Preliminary

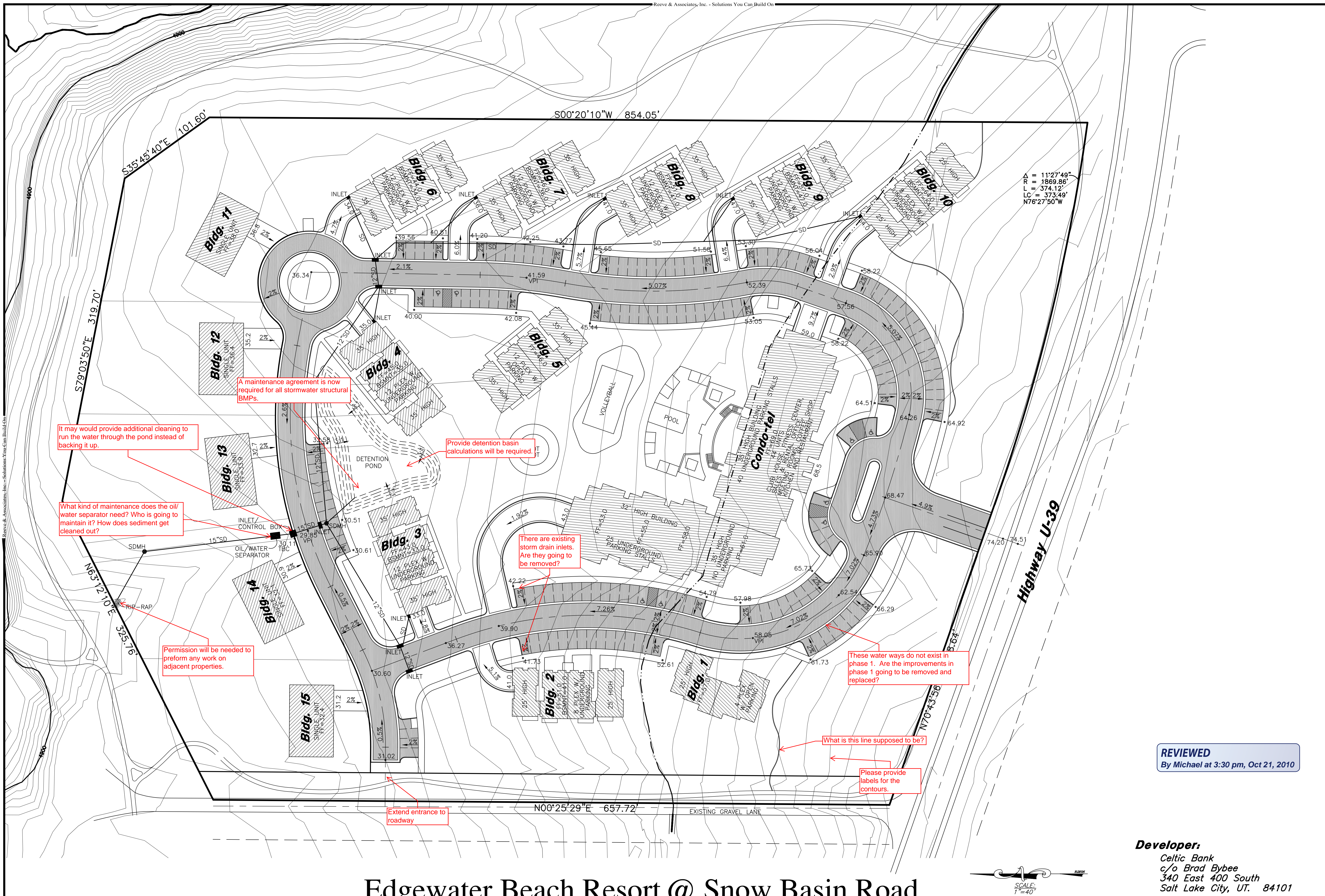
INFORMATION CONTAINED HEREIN HAS NOT BEEN FINAL CHECKED. IT IS PROVIDED AT THIS TIME FOR PRELIMINARY REVIEW ONLY AND THE DATA SHOWN HEREON SHOULD NOT BE RELIED UPON FOR FINAL APPROVAL, DOCUMENTATION, DESIGN, AND/OR CONSTRUCTION.

Project Info.

Engineer: N. Reeve
Designer: C. Gave
Begin Date: Sept. 23, 2010
Name: EDGEWATER BEACH CONDOMINIUMS
Number: 5192-06

Attended Training & Placement

FINAL
ED A
INARY
DATA
LD NO
FINAL
TION,

0
CH
S
06ets

Edgewater Beach Resort @ Snow Basin Road

Weber County, Utah

NOTES:
CONTOURS ARE SHOWN WITH A ONE FOOT INTERVAL

THESE PLANS AND SPECIFICATIONS ARE THE PROPERTY OF REEVE & ASSOCIATES, INC., 4155 S. HARRISON BLVD. EXECUTIVE BLDG. #310, OGDEN, UTAH 84403, AND SHALL NOT BE PHOTOCOPIED, RE-DRAWN, OR USED ON ANY PROJECT OTHER THAN THE PROJECT SPECIFICALLY DESIGNED FOR. WITHOUT THEIR WRITTEN PERMISSION. THE OWNERS AND ENGINEERS OF REEVE & ASSOCIATES, INC. DISCLAIM ANY LIABILITY FOR ANY CHANGES OR MODIFICATIONS MADE TO THESE PLANS OR THE DESIGN THEREON WITHOUT THEIR CONSENT.

Developer:
Celtic Bank
c/o Brad Bybee
340 East 400 South
Salt Lake City, UT. 84101

